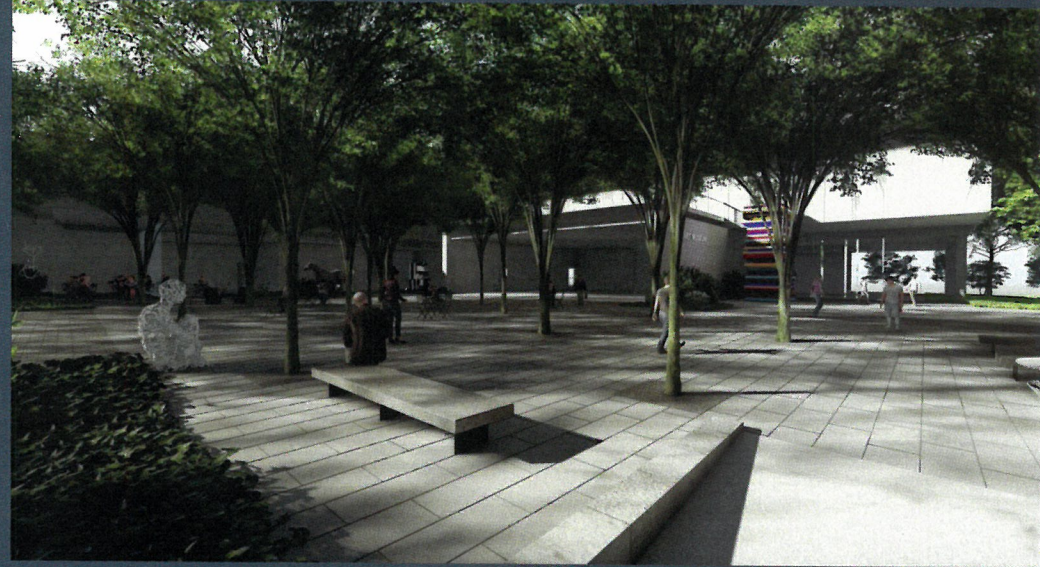




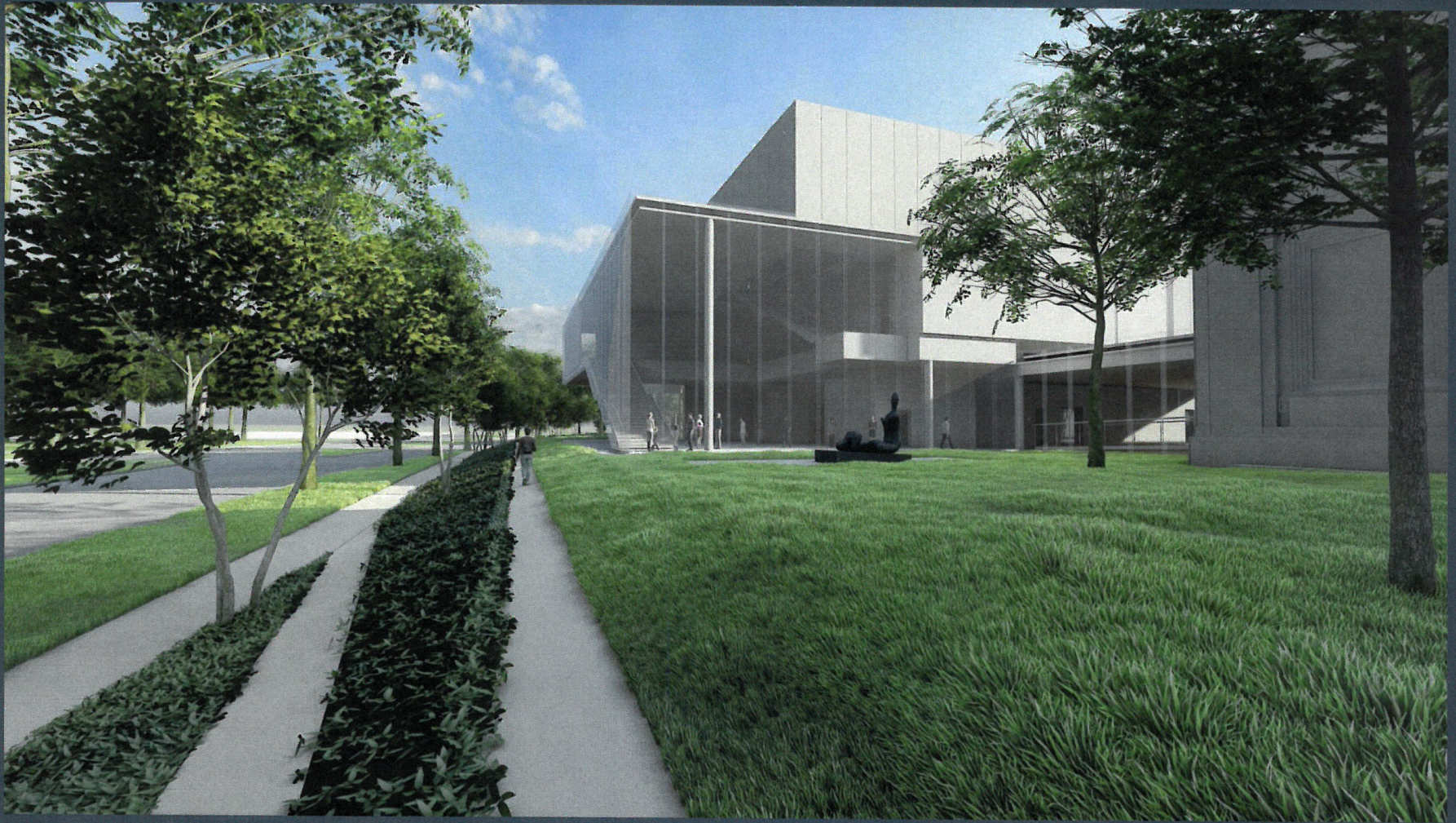
THE SPEED OUTDOORS  
ART PARK EXPERIENCE





There are very few free, ungated art parks like the one we are planning anywhere in the United States, and in view of the park's proximity to the University of Louisville campus and the downtown area, we estimate that more than 500,000 people will visit and enjoy the park each year.









Through Speed Outdoors, we will rebuild the tree canopy coverage that is vital to the health and well-being of our community making park space easily accessible to residents across Louisville.



With Reed Hilderband, one of the nation's leading landscape architecture firms, we are finalizing design plans for a park that will feature engaging art installations, playscapes, an outdoor classroom, a public gathering space, 75,000 square feet of lawn, and hundreds of new canopy trees, understory trees, bushes, and shrubs.

## SCHEMATIC DESIGN



← NORTH





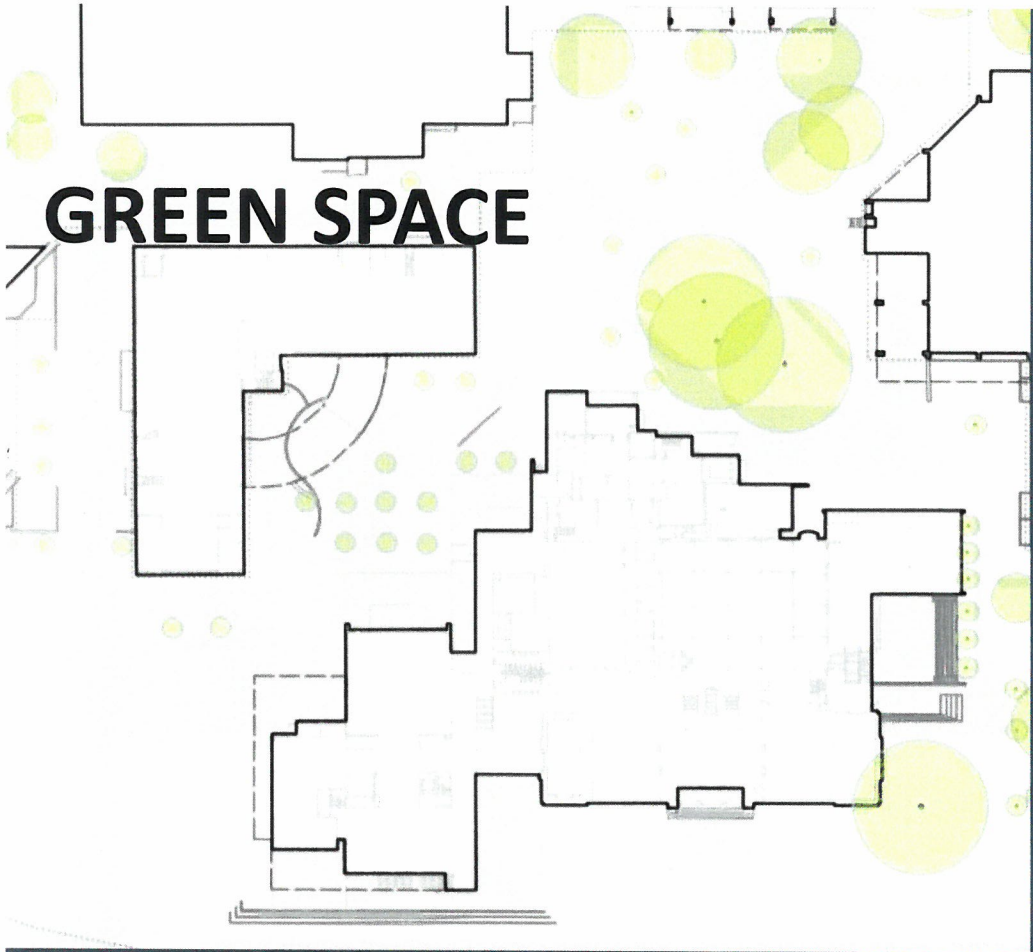




In the 1950s, the Speed sat among numerous mature canopy trees and a patchwork of green spaces connecting the Algonquin and Eastern Parkways and fulfilling Frederick Law Olmsted's vision of a park system encircling Louisville's core neighborhoods. Over time, however, development has significantly reduced tree canopy coverage around the Speed, eliminated green space, and deprived our neighbors of spaces where they can meet and connect with nature.



# GREEN SPACE



Existing conditions



Concept Design





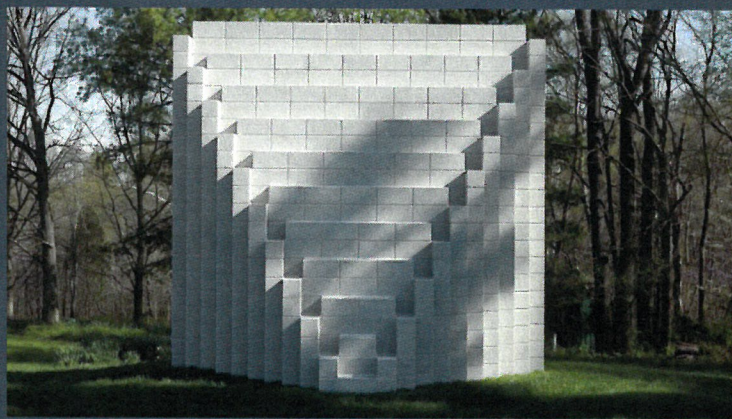
**Existing Conditions**



**Concept Design**

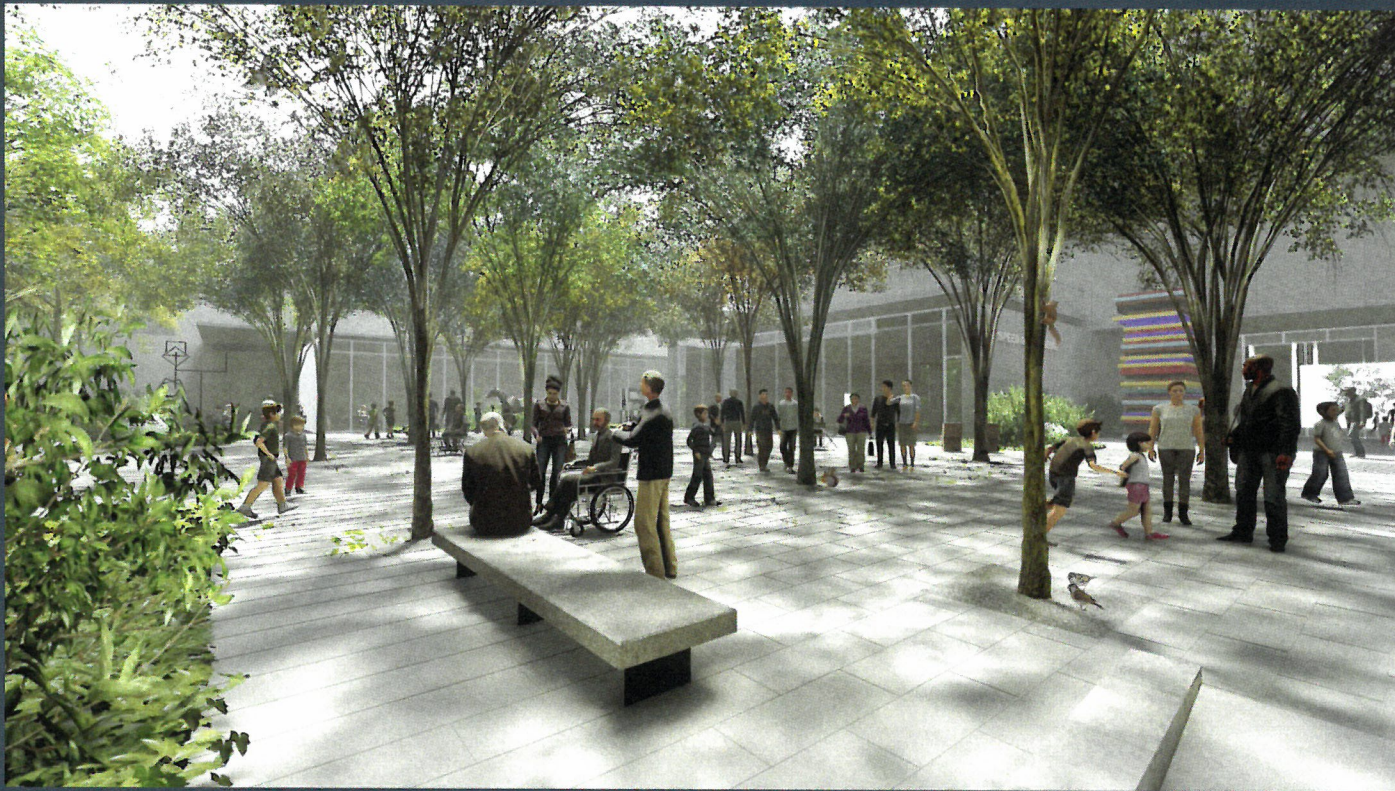


A network of pathways will lead visitors through the park, and interpretive signage will facilitate engagement with art installations, which will include several sculptures that the beloved community leader Al Shands bequeathed to the Speed, including works by the renowned artists Mel Kendrick, Sol LeWitt, and Jaume Plensa.



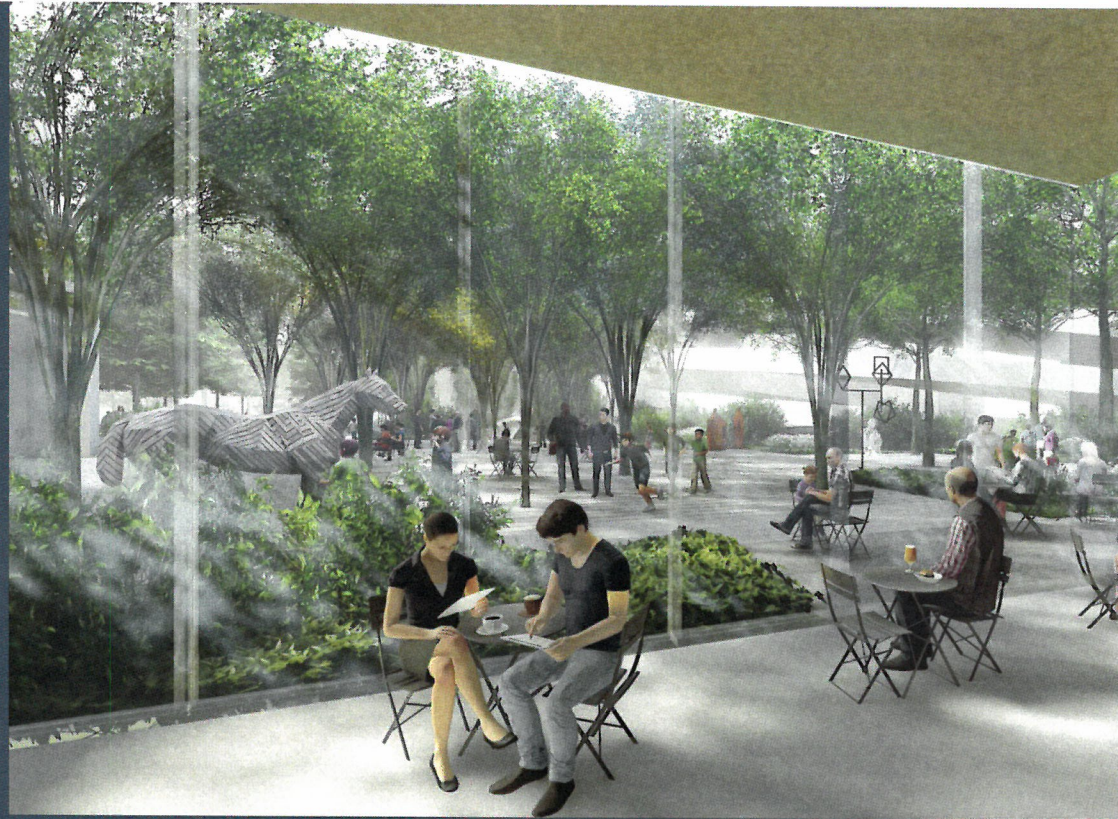


By creating an inviting, dynamic park that offers a wide variety of opportunities and programs to our neighbors, as well as out-of-town guests, we will build on the success of our recent outreach initiatives and continue to raise the Speed's profile as a leader in expanding access and involving everyone in celebrating art.





Speed Outdoors will transform the Speed Art Museum's six-acre campus into a free, welcoming, and vibrant park, providing Louisville residents and out-of-town visitors an array of new opportunities to gather, experience art, learn, and play in a safe, healthy outdoor environment.







Working with the Speed's many community partners, we will offer year-round programming that will activate spaces in the park once it is constructed. Programs will include but not be limited to musical performances, dance events, film screenings, workshops, school tours, and summer camps.