

PENRUTH PLACE SUBD.
PB. 34, PG. 72

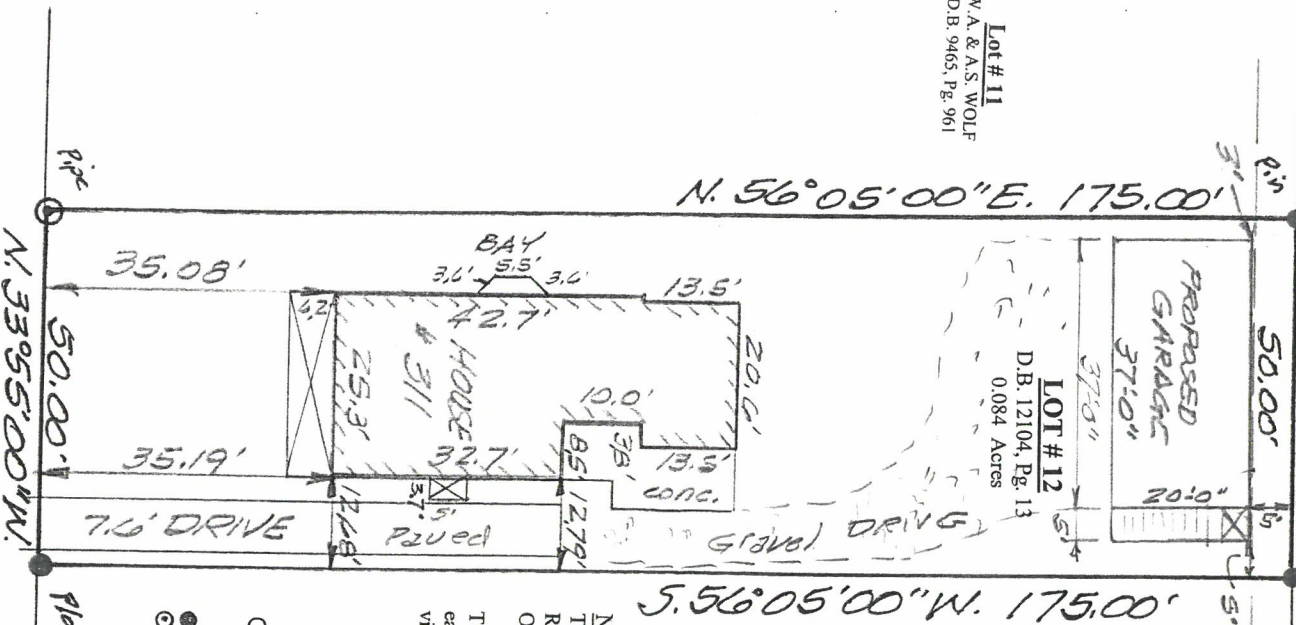


SITE LOCATION

Lot # 11
W.A. & A.S. WOLF
D.B. 9465, Pg. 961

Lot # 12
D.B. 12104, Pg. 13
0.084 Acres

Lot # 13
K. & L.B. BREWER
D.B. 11862, Pg. 415



NOTES:

The bearing for this survey was based on a Record Plat P.B. 34, Pg. 72 of record in the Office of the Clerk of Jefferson Co.

The tract shown on this plat is subject to all easements and right-of-ways and restrictions, visually apparent and of record.



MONUMENT LEGEND

- Set 1/2" Rebar, 18" long W/Cap Stamped "R.L. Rosenbaum P.L.S. # 2600" (Unless otherwise noted)
- Found Iron Pin (no cap)
- ⊙ Found pipe

311 WINTON AVENUE 60' R/W

PER P.B. 34, Pg. 72

LAND SURVEYOR'S CERTIFICATE

I hereby certify that this plat and survey were made under my supervision and that the angular and linear measurements as witnessed by monuments shown hereon are true and correct to the best of my knowledge and belief. This survey was made by method of random traverse with side shots. The unadjusted closure ratio of the traverse was 1: 16,200 and was adjusted. This survey and plat meets or exceeds the minimum standards of governing authorities for a Class "A" Survey.

Registered Land Surveyor, KY
R.L. Rosenbaum, Jr. 78.22



BOUNDARY SURVEY

For: TODD A. MC DONALD

D.B. 12104, Pg. 13

LOT # 12 BLK "3" JUTTE'S SUBD.

D.B. 756, Pg. 597

JEFFERSON COUNTY

Scale: 1" = 20' Date: July 8th, 2022

C. R. P. & ASSOCIATES, INC.
7321 New La Grange Road, Suite 111
Louisville, KY 40222
(502) 423-8747