

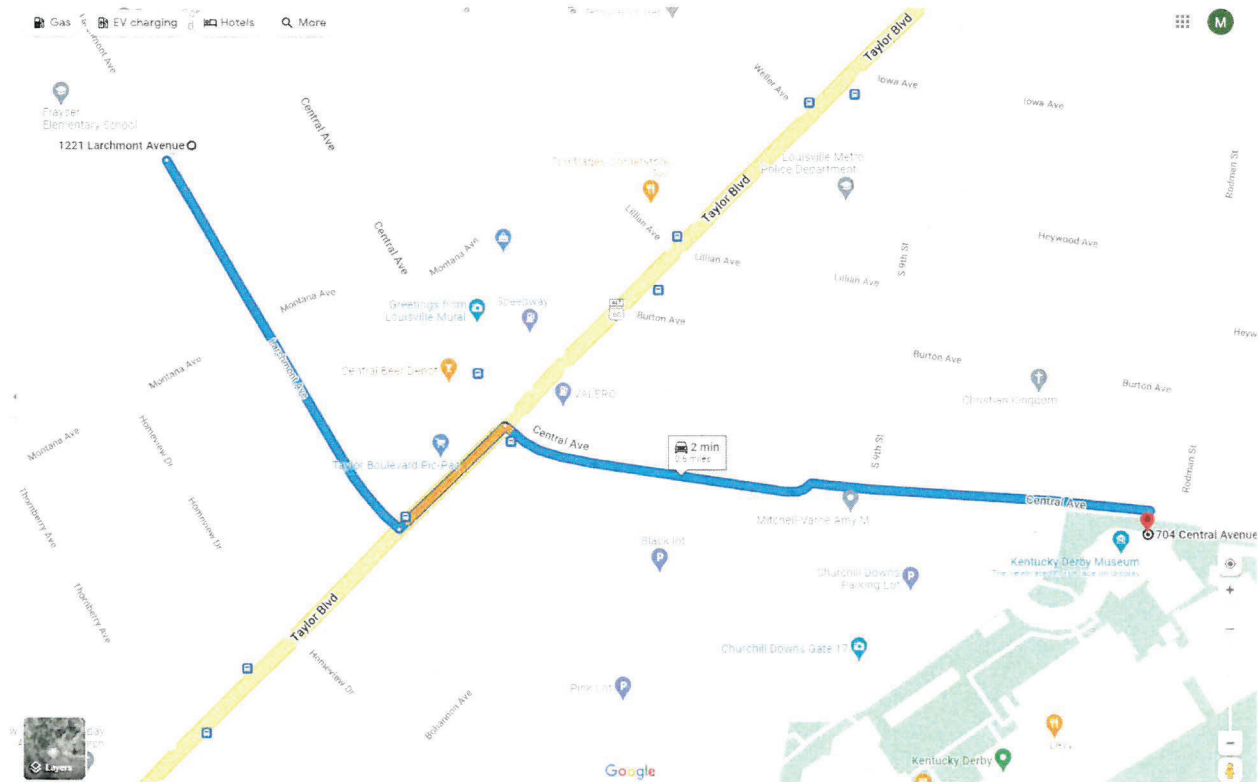
RECEIVED

NOV 09 2022

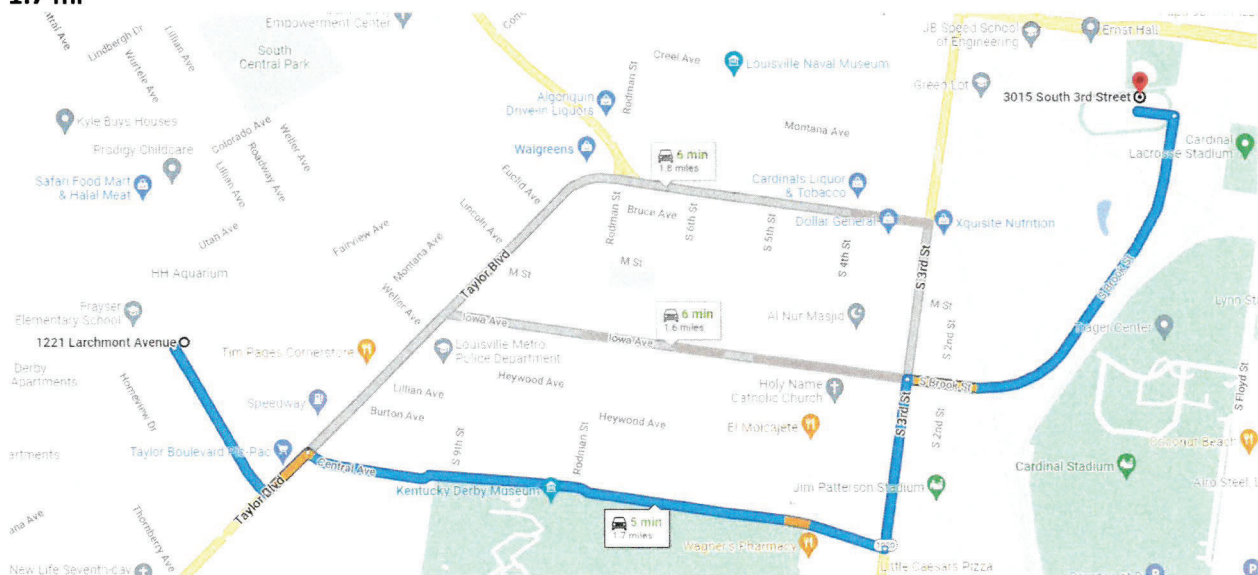
PLANNING & DESIGN  
SERVICES

**Nearby Attractions and their proximity to  
1221 Larchmont Avenue Louisville KY 40215**

**1221 Larchmont Avenue to 704 Central Avenue (Churchill Downs Derby Museum entrance)  
0.6 mile**



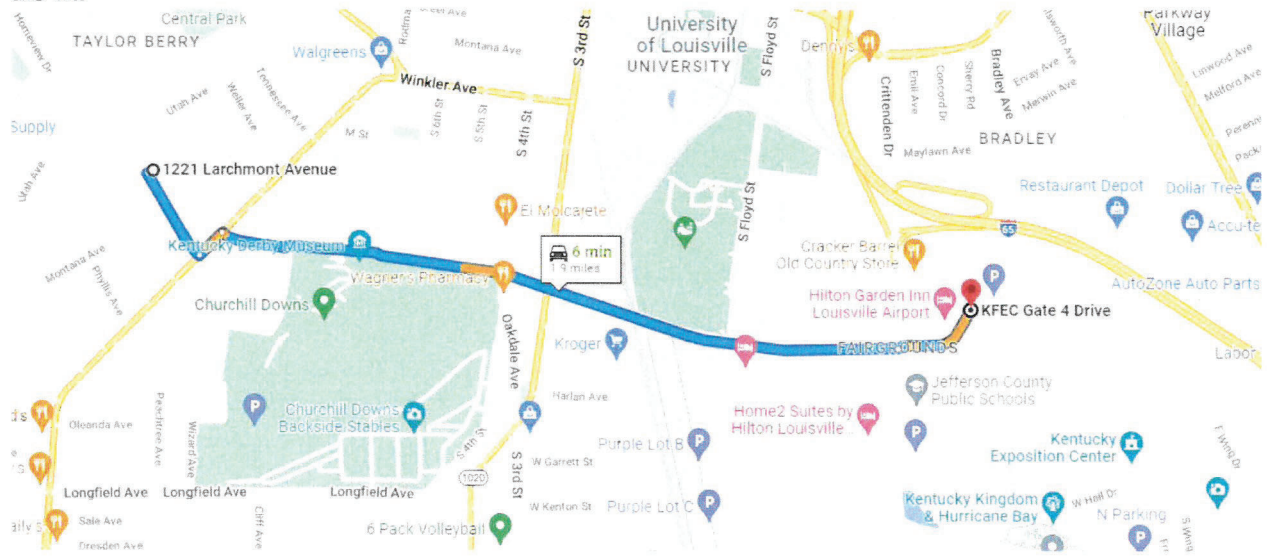
**1221 Larchmont Avenue to 3015 S 3<sup>rd</sup> Street (Jim Patterson U of L baseball stadium)  
1.7 mi**



22-CUP-0348

**1221 Larchmont Ave to 937 Phillips Lane (Ky Fair and Expo Center)**

**1.9 mi**



**RECEIVED**

**NOV 09 2022**

**PLANNING & DESIGN  
SERVICES**

22-CUP-0348

RECEIVED

NOV 09 2022

PLANNING & DESIGN  
SERVICES

*Welcome to  
1221 Larchmont Avenue  
Louisville, Kentucky 40218*



22-CUP-0348



Home is filled with Louisville History



Freshly Painted Exterior and Interior throughout





Inviting Living Spaces



Beautiful Solid Cherry Cabinets in Kitchen



RECEIVED

NOV 09 2022

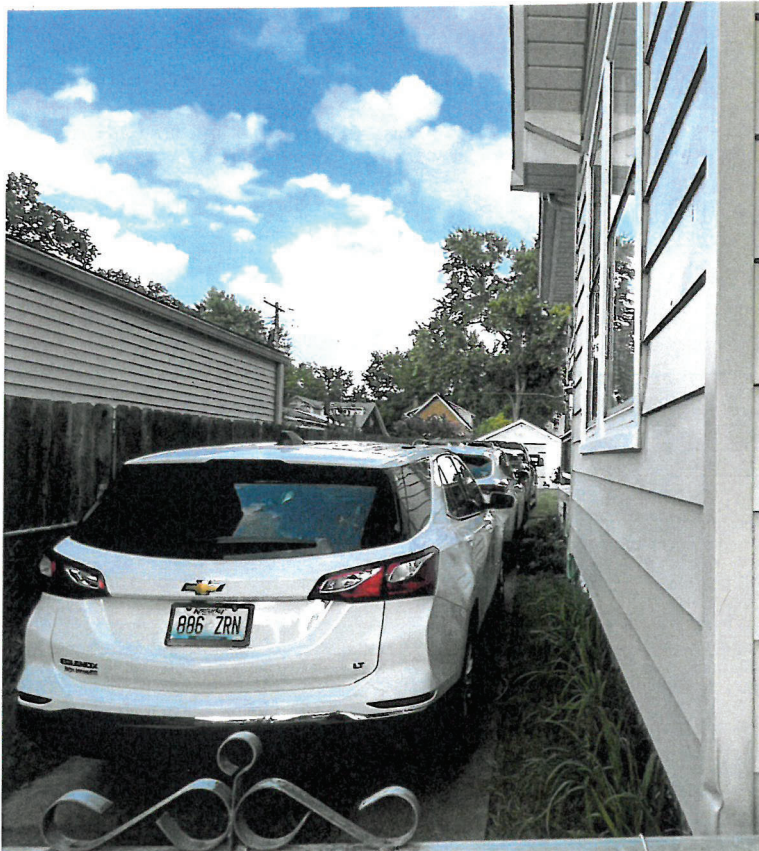
PLANNING & DESIGN  
SERVICES



2 - Full Baths



Long Driveway /plenty of off-street parking



RECEIVED

NOV 09 2022

PLANNING & DESIGN  
SERVICES



Curb appeal



Beautiful Deck



RECEIVED

NOV 09 2022

PLANNING & DESIGN  
SERVICES



Freshly updated landscaping



Beautifully maintained front and back yards



RECEIVED

NOV 09 2022

PLANNING & DESIGN  
SERVICES

Page 5

22-CUP-0348



Bedrooms with ample space and tall ceilings

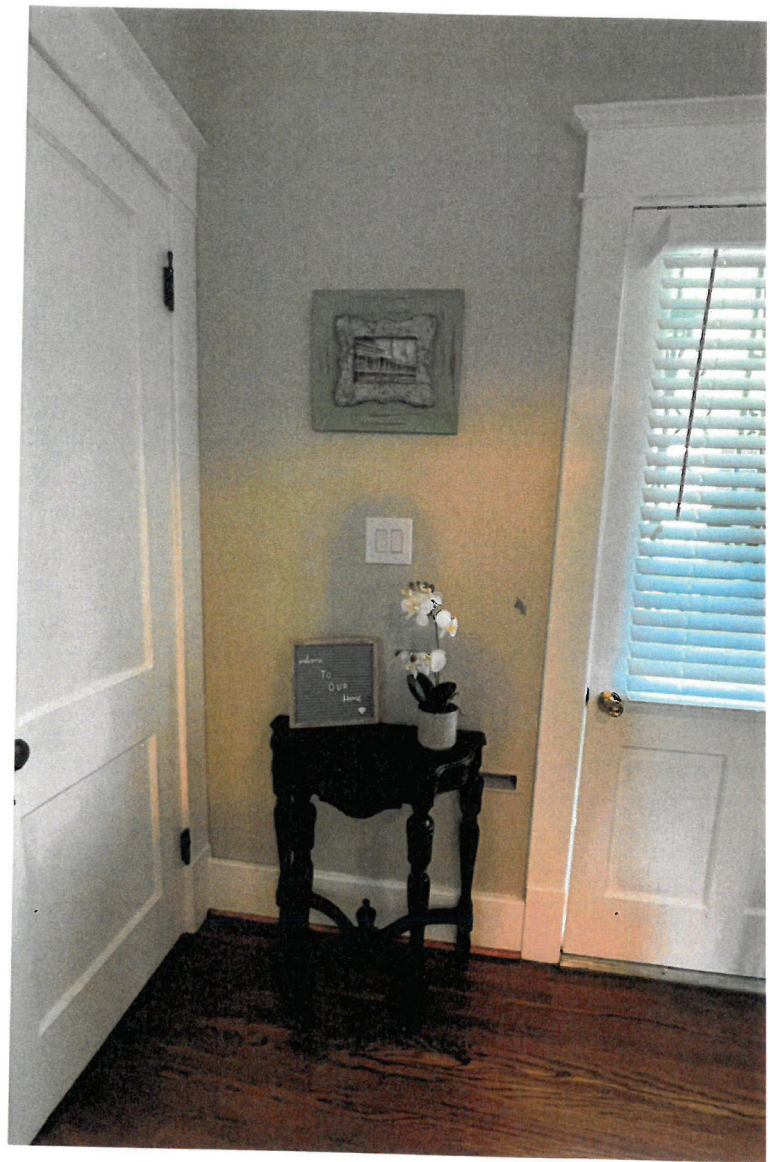
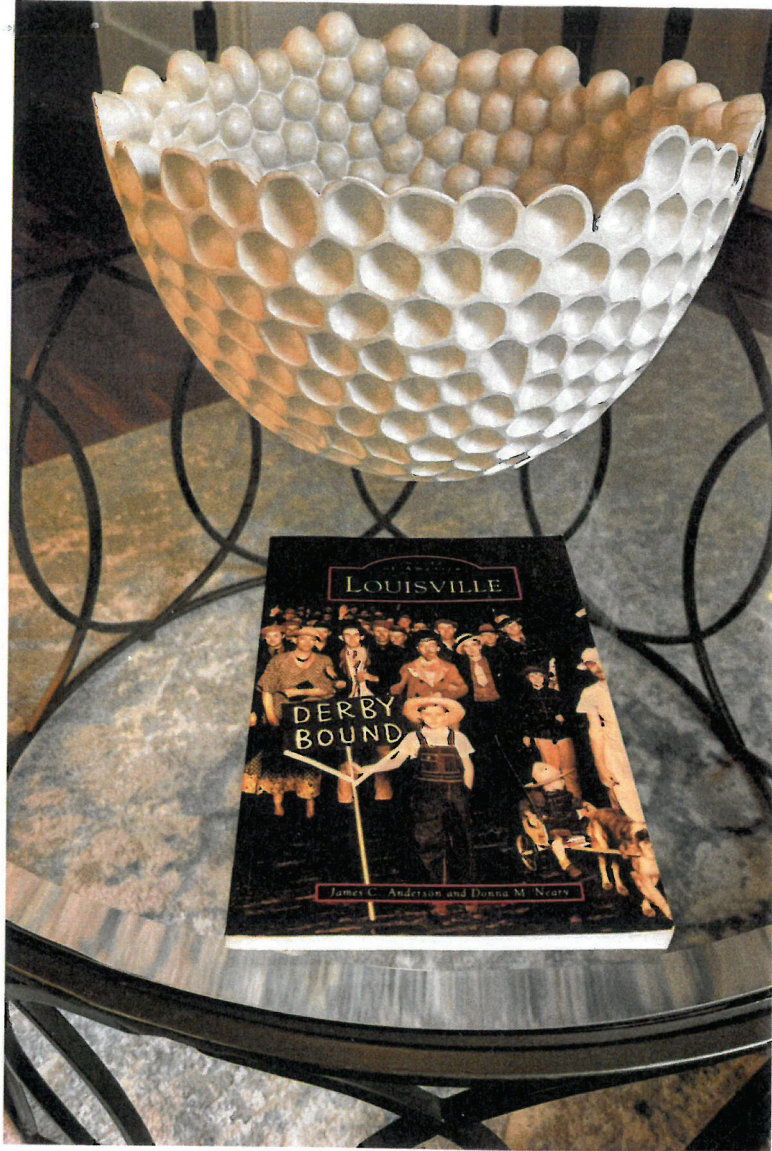


RECEIVED

NOV 09 2022

PLANNING & DESIGN  
SERVICES





RECEIVED

NOV 09 2022

PLANNING & DESIGN  
SERVICES

Page 7

22-CUP-0348