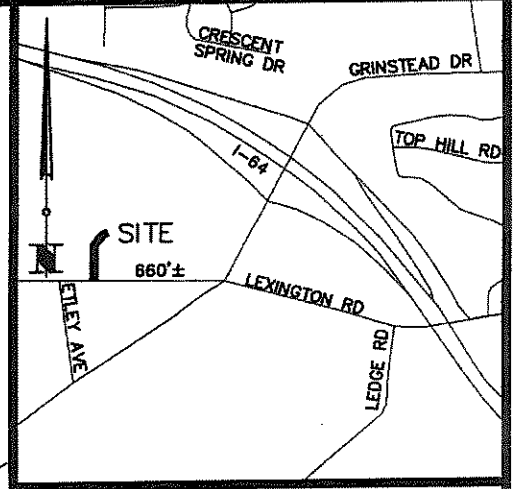


1. This plat of survey represents a boundary survey and complies with 201 KAR 18:150.
2. This survey was conducted using a Trimble R-10 dual frequency receiver via the "RTK", real time kinematic survey method. The relative positional accuracy is within $\pm 0.05'$ + 100 ppm, which meets or exceeds the minimum standards of governing authorities for an urban survey.
3. This plat is subject to easements and restrictions whether recorded or not.

LINE TABLE

LINE	BEARING	DISTANCE
L1	N 64°59'26" E	20.59'
L2	N 25°00'22" W	39.50'
L3	S 64°59'30" W	11.38'
L4	S 42°32'31" W	60.89'
L5	N 87°49'26" W	40.00'
L6	N 64°59'27" W	15.98'
L7	N 67°44'46" W	21.33'

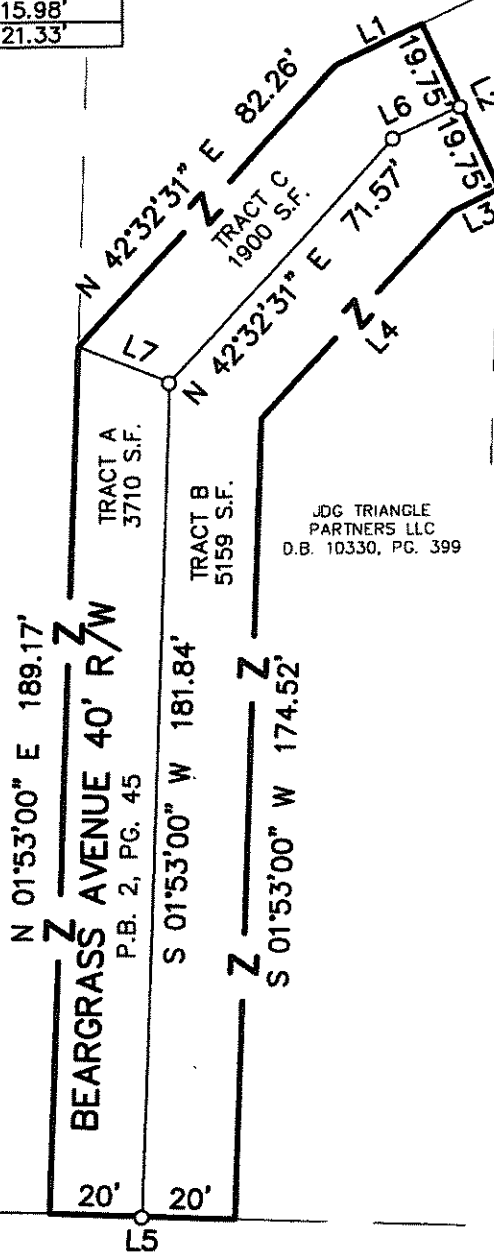
LOUISVILLE & JEFFERSON COUNTY MSD
D.B. 11379, PG. 918



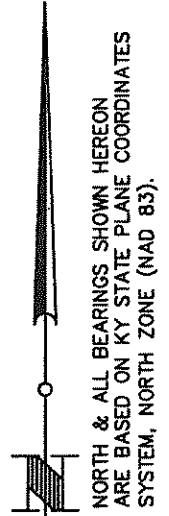
LOCATION MAP
NO SCALE

LOUISVILLE & JEFFERSON COUNTY MSD
D.B. 11789, PG. 168

JDG TRIANGLE PARTNERS LEX LLC
D.B. 11905, PG. 292



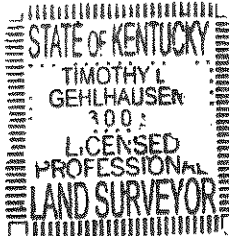
JDG TRIANGLE PARTNERS LLC
D.B. 10330, PG. 399



LEXINGTON ROAD R/W VARIES

LAND SURVEYOR'S CERTIFICATE

I HEREBY CERTIFY THAT THE SURVEY AS DEPICTED HEREON WAS PERFORMED BY PERSONS UNDER MY DIRECT SUPERVISION, AND MEETS OR EXCEEDS THE MINIMUM TECHNICAL STANDARDS FOR AN URBAN SURVEY AS ESTABLISHED BY THE COMMONWEALTH OF KENTUCKY, PER 201 KAR 18:150.



Timothy L. Gehlhausen 15 SEPT 22
TIMOTHY L. GEHLHAUSEN PLS #3005
NOT VALID WITHOUT ORIGINAL SIGNATURE AND SEAL OF THE PROFESSIONAL SURVEYOR

LEGEND

—○— SET 1/2"x18" REBAR WITH CAP #3005 OR MAGNAIL WITH WASHER #3005

GRAPHIC SCALE 1"=40'



ROAD CLOSURE PLAT

BEARGRASS AVENUE NORTH OF LEXINGTON ROAD
LOUISVILLE, KY 40206
TAX BLOCK 70H

DATE: 9/15/22

SCALE: 1"=40'



MINDEL SCOTT
ENGINEERING ► SURVEYING ►
PLANNING ► LANDSCAPE ARCHITECTURE
5151 Jefferson Blvd. Louisville, KY 40219
502-485-1508 ► MindelScott.com