

**Land Development and Transportation  
Committee  
Staff Report  
September 22, 2022**



<b>Case No:</b>	22-STRCLOSURE-0015
<b>Project Name:</b>	Portion of Enterprise Drive Street Closure
<b>Location:</b>	6701 Enterprise Drive
<b>Owner(s):</b>	Kentuckiana Development, LLC
<b>Applicant:</b>	Heritage Engineering
<b>Jurisdiction:</b>	Louisville Metro
<b>Council District:</b>	13 – Mark Fox
<b>Case Manager:</b>	Molly Clark, Planner II

**REQUEST(S)**

- Closure of Public Right-of-way

**CASE SUMMARY/BACKGROUND**

The proposal is to close a small portion of Enterprise Drive which is a public street. The closure area and surround properties are owned by other industrial companies and adjacent to CSX railroad, who have all signed a notarized consent form.

This street closure case is related to a Category 3 plan under case number 22-CAT3-0003 which is a proposal for a 175,000 SF Office/Warehouse.

**STAFF FINDING**

The proposal is ready to docket for the Consent Agenda of the Planning Commission

**TECHNICAL REVIEW**

The Applicant is working to finalize easements or equipment relocation agreements with MSD and AT&T. These agreements will need to be completed prior to final recording of the closure plat.

**INTERESTED PARTY COMMENTS**

None Received.

## **STANDARD OF REVIEW AND STAFF ANALYSIS FOR STREET CLOSURES**

1. Adequate Public Facilities – Whether and the extent to which the request would result in demand on public facilities and services (both on-site and off-site), exceeding the capacity or interfering with the function of such facilities and services, existing or programmed, including transportation, utilities, drainage, recreation, education, emergency services, and similar necessary facilities and services. No closure of any public right of way shall be approved where an identified current or future need for the facility exists. Where existing or proposed utilities are located within the right-of-way to be closed, it shall be retained as an easement or alternative locations shall be provided for the utilities; and

STAFF: Adequate public facilities are available to serve existing and future needs of the community. The proposed closure does not result in an increase in demand on public facilities or services as utility agencies have coordinated with the applicant and/or applicant's representative and Planning and Design Services staff to ensure that facilities are maintained or relocated through agreement with the developer. No property adjacent or abutting the rights-of-way to be closed will be left absent of public facilities or services, or be dispossessed of public access to their property. The applicant will provide necessary easements or relocation of equipment per utility agency requirements.

2. Cost for Improvement – The cost for a street or alley closing, or abandonment of any easement or land dedicated to the use of the public shall be paid by the applicant or developer of a proposed project, including cost of improvements to adjacent rights-of-way or relocation of utilities within an existing easement; and

STAFF: Any cost associated with the rights-of-way to be closed will be the responsibility of the applicant or developer, including the cost of improvements to those rights-of-way and adjacent rights-of-way, or the relocation of utilities and any additional agreement reached between the utility provider and the developer.

3. Comprehensive Plan – The extent to which the proposed closure is in compliance with the Goals, Objectives and Plan Elements of the Comprehensive Plan; and

STAFF: The request to close multiple rights-of-way is in compliance the Goals, Objectives and Plan Elements of the Comprehensive Plan as Mobility Goal 2, Policy 2 states to coordinate use of rights-of-way with community design policies. Ensure accessible rights-of-way to accommodate mobility needs of all transportation network users; Mobility Goal 2, Policy 7 states that the design of all new and improved transportation facilities should be accessible and; Mobility Goal 3, Policy 1 states to provide transportation services and facilities to promote and accommodate growth and change in activity centers through improved access management. Provide walking and bicycling opportunities to enable activity centers to minimize single-occupant vehicle travel. Encourage a mix of complementary neighborhood serving businesses and services in neighborhood and village centers to encourage short trips easily made by walking or bicycling; Mobility Goal 3, Policy 2 seeks to improve mobility, and reduce vehicle miles traveled and congestion, encourage a mixture of compatible land uses that are easily accessible by bicycle, car, transit, pedestrians and people with disabilities. Housing should be encouraged near employment centers; Mobility Goal 3, Policy 3 to evaluate developments for their ability to promote public transit and pedestrian use. Encourage higher density mixed-use developments that reduce the need for multiple automobile trips as a means of achieving air quality standards and providing transportation and housing choices; Mobility Goal 3, Policy 5 to evaluate developments for their impact on the transportation network (including the street, pedestrian, transit, freight movement and bike facilities and services) and air quality; and

Mobility Goal 3, Policy 12 states to ensure that transportation facilities of new developments are compatible with and support access to surrounding land uses, and contribute to the appropriate development of adjacent lands. Where appropriate, provide at least one continuous roadway through the development to tie all local access roads or parking areas to the arterial street system. Adequate stub streets and pedestrian connections should be provided by developments. Any cost associated with the rights-of-way to be closed will be the responsibility of the applicant or developer. Adequate public facilities are available to serve existing and future needs of the community. Any facility required to be placed in an easement or relocated will be done so by the developer. Transportation facilities have been provided to accommodate future access and to not dispossess property owners of public access. All adjacent lands maintain access to public infrastructure and utility services will continue to be provided to these lands.

4. Other Matters – Any other matters which the Planning Commission may deem relevant and appropriate; and

STAFF: There are no other relevant matters to be considered by the Planning Commission.

**REQUIRED ACTIONS:**

- Schedule for the Consent Agenda before the next available Planning Commission

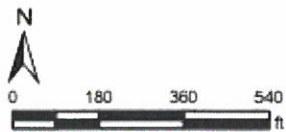
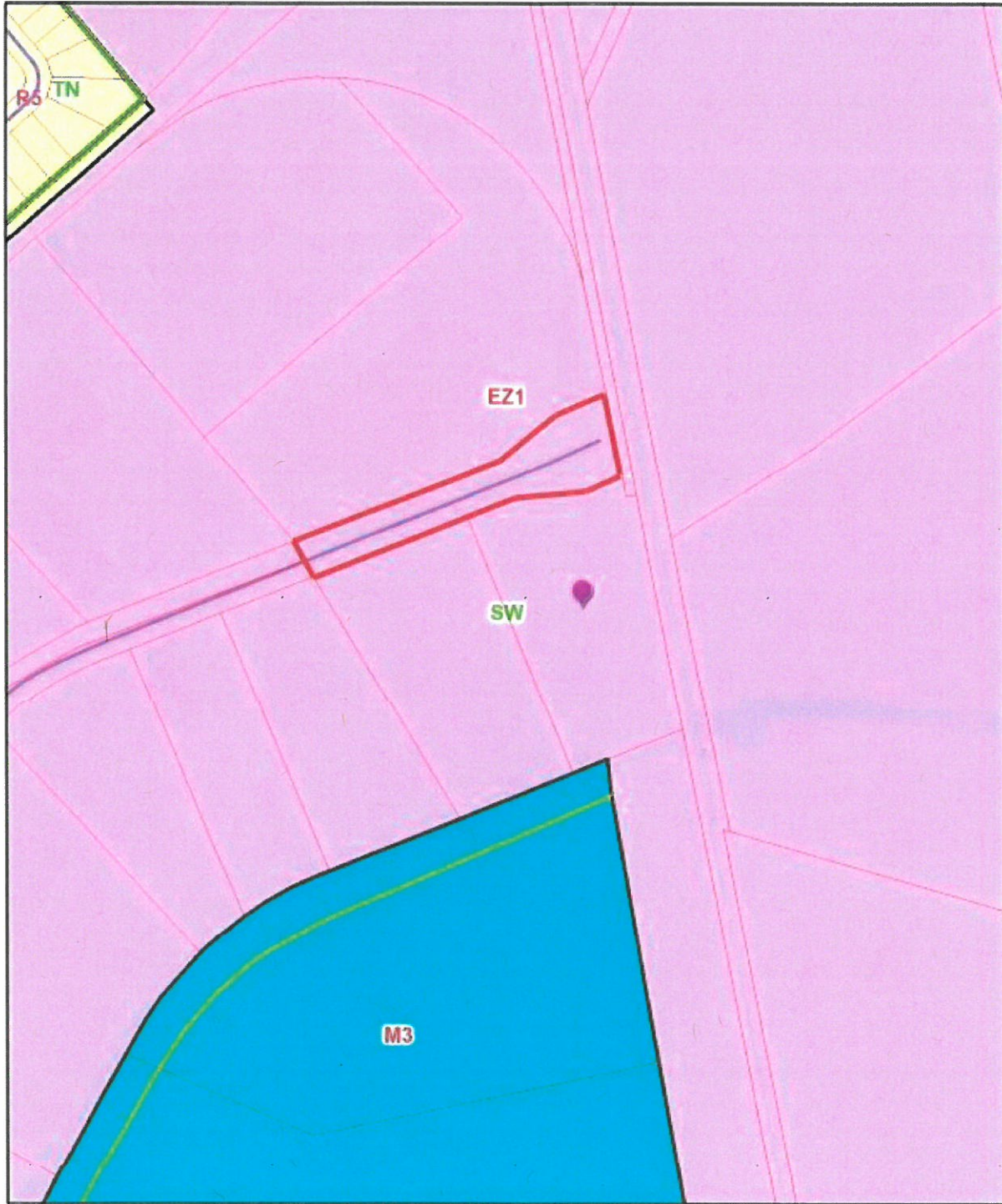
**NOTIFICATION**

Date	Purpose of Notice	Recipients
9/12/22	Hearing before LD&T	1 <sup>st</sup> tier property owners Registered Neighborhood Groups in Council District 13

**ATTACHMENTS**

1. Zoning Map
2. Aerial Photograph
3. Proposed Conditions of Approval

1. **Zoning Map**



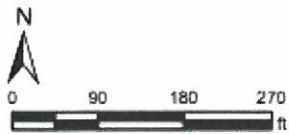
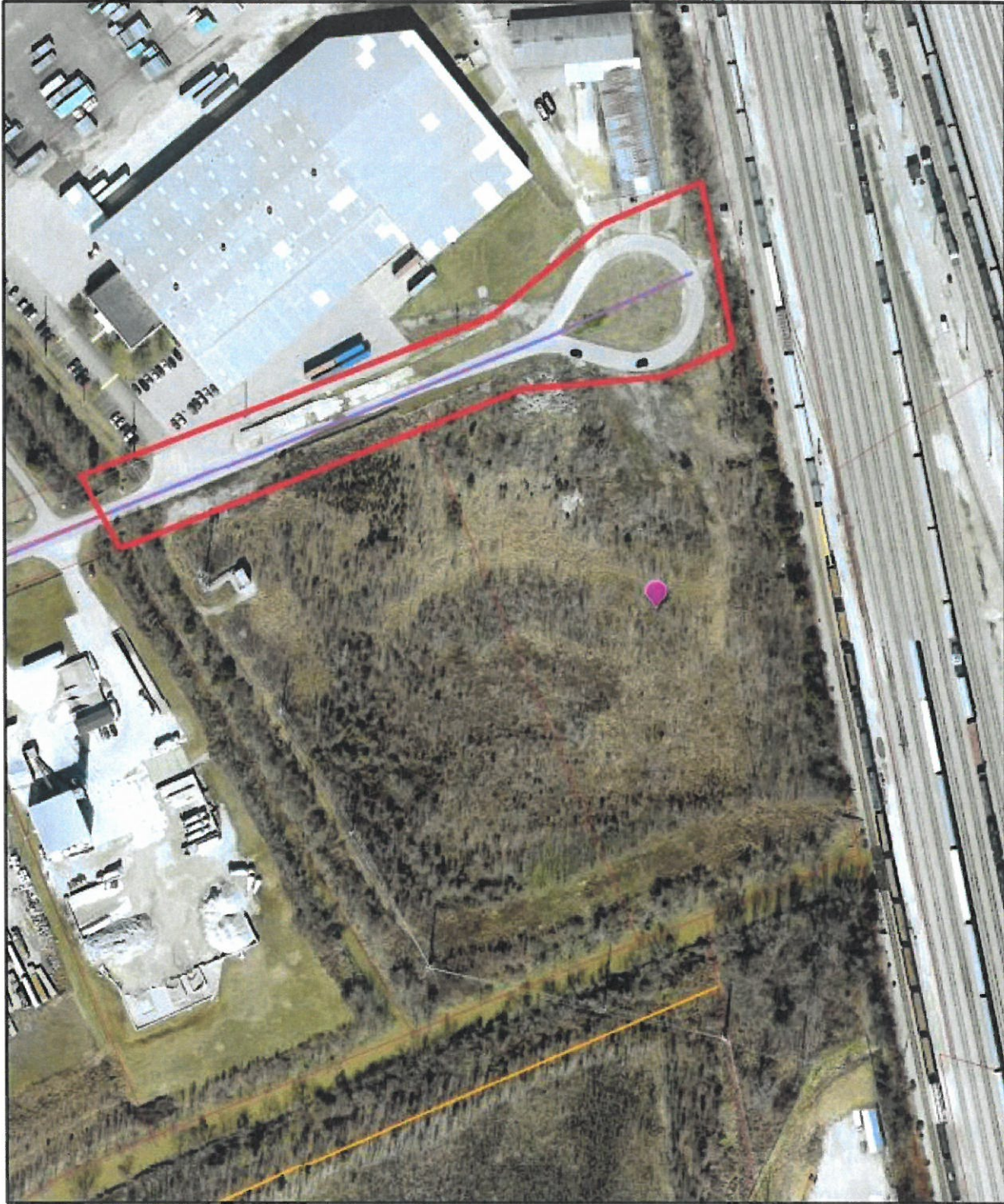
Friday, September 16, 2022 | 1:17:22 PM



LOJIC © 2022

This map is not a legal document and should only be used for general reference and identification.

2. Aerial Photograph



Friday, September 16, 2022 | 1:20:08 PM



LOJIC © 2022

This map is not a legal document and should only be used for general reference and identification.

**3. Conditions of Approval**

1. The applicant shall secure all necessary easements or provide for the relocation of utility equipment as required by AT&T and MSD. Written confirmation of this work being completed must be provided to Planning and Design Services by authorized representatives of these utility agencies prior to final recording of the closure.