

ONE PARK NORTH

PD-Development Plan
Pattern Book

Developed by:
JDG Triangle Partners, LLC

Case No. 22-ZONE-0043

November 7, 2022



Received Nov. 07, 2022

Planning & Design Services

22-ZONE-0043



TABLE OF CONTENTS

Development Overview

- 3 Location Characteristics
- 3 Current Conditions
- 3 History
- 4 Development Vision
- 5 Benefits to the Community
- 6 Charrette – Resulting Plan

Land Use

- 7 Permitted Land Uses
- 7 Limited Uses
- 7 Prohibited Uses
- 8 Planned Development Use Map
- 8 Dimensional Requirements

Transportation Mobility Plan

- 9 Vehicle Circulation – Access, Ride Share and Public Transportation
- 10 Vehicular Circulation – Road Closing, Road Dedication, Road Easement and Resulting Land Swap Plan
- 11 East Lexington Road Cross-section, Including Bicycle Circulation
- 12 West Lexington Road Cross-section, Including Bicycle Circulation
- 13 Road Striping Plan
- 16 Internal Vehicular Circulation and Parking

PD Design Guidelines

- 17 Streetscape Amenities
- 18 Street Plantings
- 18 Trees Along Lexington
- 19 Shrubs
- 19 Grasses and Perennials
- 19 Annuals
- 20 Common Area and Event Space
- 21 Signs
- 21 Building Lighting
- 22 Building Design and Materials
- 26 Development Plans

DEVELOPED BY:

JDG TRIANGLE PARTNERS, LLC



Bardenwerper
Talbott & Roberts, PLLC



MINDEL SCOTT



DONHOFF KARGL NALL ARCHITECTS

Received Nov. 07, 2022



Planning & Design Services

22-ZONE-0043

LOCATION CHARACTERISTICS

ONE PARK – North is located across Lexington Road from ONE PARK – South, at the crossroads of Lexington Road and Grinstead Drive. It is the first block removed from Interstate 64, which in 2018 handled 77,000 daily cars. Lexington Road is an arterial road that connects downtown Louisville to downtown St Matthews. Average daily traffic (ADT) level, on Lexington Road just west of Etley decreased from 11,500 in 2016 to 11,000 in 2017 to 8,400 in 2020. Grinstead Drive southwest of Etley toward Bardstown Road decreased from 26,800 ADT in 2016 to 26,000 in 2016 to 19,800 in 2020. Grinstead ADT reduced further to 11,700 in the Highlands neighborhood. Relative to other urban arterials, these are not problematic traffic levels. (See the Traffic Impact Study for more information.) The Traffic Impact Study also indicates a 14% reduction in parking needed due to “captured trips” – meaning a person using a combination of the uses does not generate new travel trips or parking needs.

The project site is near Beargrass Creek which was realigned along Interstate 64. The creek is a major urban stream corridor in Louisville. Across Grinstead Drive near the site is Willow Pond, a 4-acre recreational water body amenity. It is the only significant urban water body in the City of Louisville inside the Watterson Expressway. This portion of Cherokee Park around Willow Pond presents opportunities for more meaningful, passive water-oriented activities for more visitors to enjoy the park.

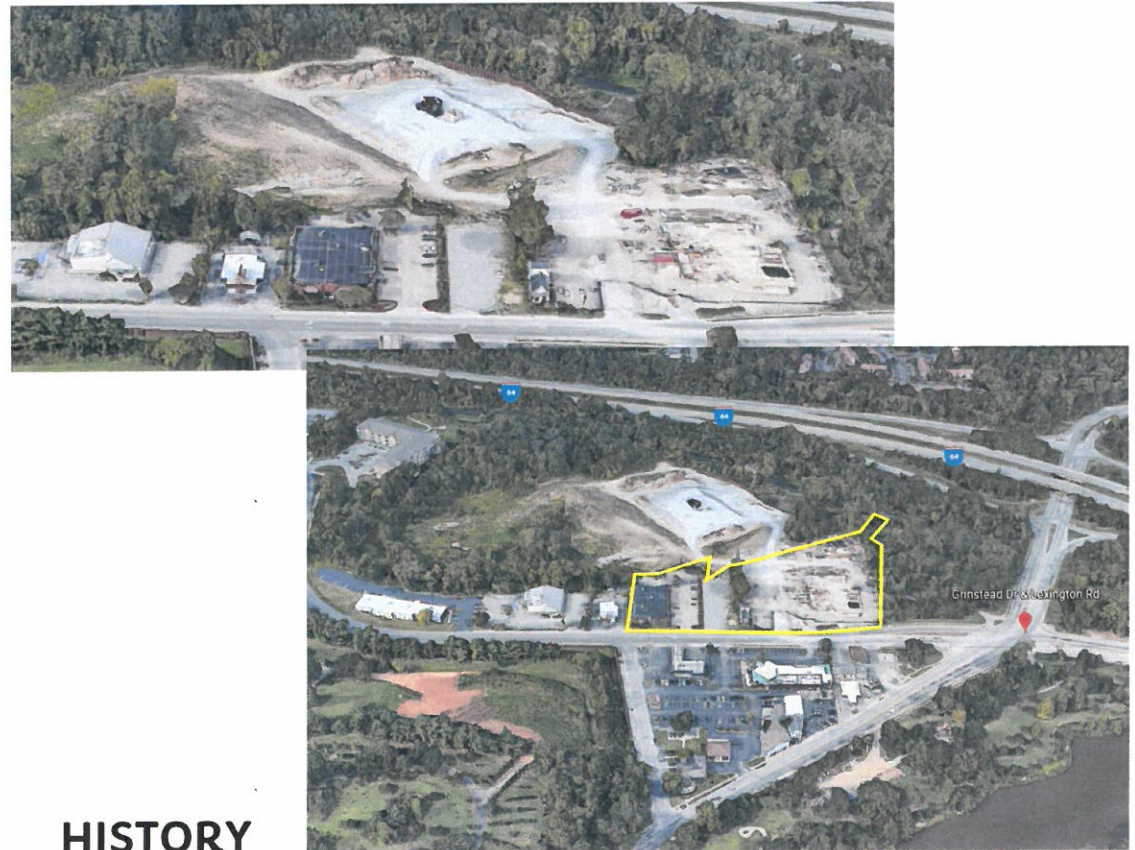
Different from Willow Pond is MSD’s Waterway Protection Tunnel located next to this site. It is an underground holding facility which will contain 54.5 million gallons of combined sewer effluent as a part of the EPA consent decree. On the surface, it will offer a new public green space and trailhead for the Beargrass Creek Trail. ONE PARK – North will increase opportunities for usage of the Beargrass Greenway, a positive urban trail that connects to paths and bike lanes leading to downtown.

The ONE PARK – North site is across Lexington Road from Cave Hill cemetery, which is 297 acres in size. There are approximately 120,000 people interred as of 2002, with room for about 22,000 more graves. The cemetery opened in 1848 and interred those from the Revolutionary War like George Rogers Clark to those from the present day like Muhammad Ali.

The ONE PARK – North site is also immediately adjacent to Cherokee Park which is approximately 389 acres in size and adjoins the 521-acre Seneca Park just beyond it. Fredrick Law Olmsted’s firm designed the parks in 1891 and 1928, respectively. As a designer of major urban parks, Olmsted anticipated dense/intense development adjacent to his parks, which were intended and designed to contribute to healthier cities by offering useable open spaces within the urban core. As the far east suburban Parklands of Floyd’s Fork encourages new development along its 26-mile linear edge, redevelopment of under-utilized and under-planned sites, like this one, are essential to retain the attractiveness and vibrancy of Louisville’s urban core adjoining Louisville’s urban parks.

CURRENT CONDITIONS

The only current use of the site is as a staging facility for MSD’s construction project. Due to the pre-“Plan Certain” C-2 zoning, intense, auto-centric development is allowed by-right. This could mean uses such as a truck stop, a gas station, auto repair, new or used auto sales, contractor shops, and self-storage if granted a conditional use permit (CUP).



HISTORY

The history of this crossroads site has long been a transitional one more or less like the ONE PARK – South site: at one time featuring a large, active nightclub called “Jim Porter’s Good Time Emporium” and an assortment of other undistinguished buildings but later stripped of all buildings by MSD to construct a sewage overflow holding facility. The Metro Land Development Code (LDC) designates it as a pre-“Plan Certain” location, meaning no development plans or discretionary reviews are needed in the context of the allowed mostly C-2 uses.



DEVELOPMENT VISION

The JDG Triangle Partners vision for the ONE PARK – North site is of another stunning building design that, same as ONE PARK – South, will receive national acclaim for its architecture, combination of interactive uses, and prominent location next to a major urban park at the gateway to Louisville’s downtown. Further, JDG Triangle Partners sees this project as:

- Enhancing the previously approved development at the crossroads of four neighborhoods leading to downtown
- Improving even more than the recent approved gateway into downtown from Interstate 64
- Adding more to the recently approved brand new street character to further enhance the pedestrian experience
- Having multi-modal access and connections (known as Complete Street)
- Using sustainable building principles that benefit the environment
- Involving a mix of uses for work, retail, residence, and recreation, being a community unto itself and being one that supports and interacts with the communities around it, especially ONE PARK – South
- Providing new access to and views of the recreational area next to it

BENEFITS TO THE COMMUNITY

- Rids the community of another unplanned eyesore at a gateway location to downtown Louisville and nearby urban parks
- Helps accommodate the demand for urban housing and retail
- Helps accommodate economic opportunity inside the Watterson Expressway
- Even better utilizes an unplanned block with already existing infrastructure
- Redevelops on arterial roads along the interstate with convenient, direct access
- Increases area vibrancy through yet more new business opportunities
- Better promotes Louisville's competitiveness with its most attractive competitor cities (e.g. Charlotte, Nashville, Indianapolis and Austin) where developments like ONE PARK – North and ONE PARK – South are omnipresent, unlike in Louisville
- Even better utilizes Cherokee and nearby Seneca Parks and links them to the urban environment which connects the parks to downtown
- Creates even stronger interest in development along key arterials (e.g. Lexington, Main/Market) into and out of downtown



Current Design



Received Nov. 07, 2022 Missing Story Design

Planning & Design Services

22-ZONE-0043⁵

CHARRETTE – RESULTING PLAN

- Assures a development compatible with ONE PARK – South
- Assures a well-planned development instead of an unplanned pre-Plan Certain one
- Assures more wide sidewalks for better pedestrian movement and to accommodate outdoor amenities
- Assures a better streetscape with trees, pavers around the trees, outdoor lighting, and outdoor seating
- Assures architectural diversity to diminish the sense of an overbearing street presence
- Showcases a variety of building materials complimenting those previously approved for ONE PARK – South
- Minimizes parking visibility along Lexington Road, although allowing some at grade parking to satisfy grocery store and retail demand
- Assures upper-level green infrastructure for residents, guests and/or public enjoyment
- Includes sustainability in various aspects of building design
- Assures that retail space can accommodate highly desirable uses such as an urban grocery and bike/pedestrian-oriented businesses
- Prohibits a large number of currently permitted C-2 land uses (mentioned above and shown below)
- Works with the city's plans for bike lanes and compressed driving lanes along Lexington Road
- Assures bicycle parking
- Makes provisions for car sharing drop off/pick up
- Proposes a traffic signal at Eteley Avenue and Lexington Road
- Proposes a pedestrian crossing signal at Eteley Avenue and Lexington Road
- Shows dual lefts onto Grinstead Drive and leading to the I-64 ramp for better access
- Provides good access and internal circulation for all modes of travel
- Limits single tower height to no greater than the one at ONE PARK – South



Received Nov. 07, 2022

Planning & Design Services

22-ZONE-0043

PERMITTED LAND USES

The following uses shall be permitted in ONE PARK – North's Planned Development District (PDD). The category titles correspond to the PDD Use Plan.

Residential Uses:

- Apartments and condominiums
- Assisted Living
- Extended Stay Lodging
- Home Occupations
- Live/Work Units
- Short Term Rentals

Offices:

- General
- Professional
- Medical

Retail:

- Antique/Boutique
- Apparel
- Art Gallery
- Artist Studio
- Bars and Restaurants with live music with outdoor sales and consumption of alcoholic beverages
- Banking / Financial
- Barber/Beauty
- Bike Sales and Service
- Books
- Coffee/Café
- Dance Instruction
- Day Care
- Dry Cleaners
- Fitness /Athletic
- Florist
- Grocery store with liquor sales
- Hair Salon
- Interior Design/Decorating
- Jewelry
- Micro-brewery and micro-distillery
- Package Liquor
- Pharmacy
- Photocopying / Duplicating
- Photography
- Sporting Goods
- Tailor
- Veterinarian

LIMITED USES

Cell Antennas shall be limited in location to the top of the tower.

Prohibited Uses

Everything not mentioned



Hotel:

- Hotel, including ancillary restaurants, bars, shopping space, and conference/event / meeting space

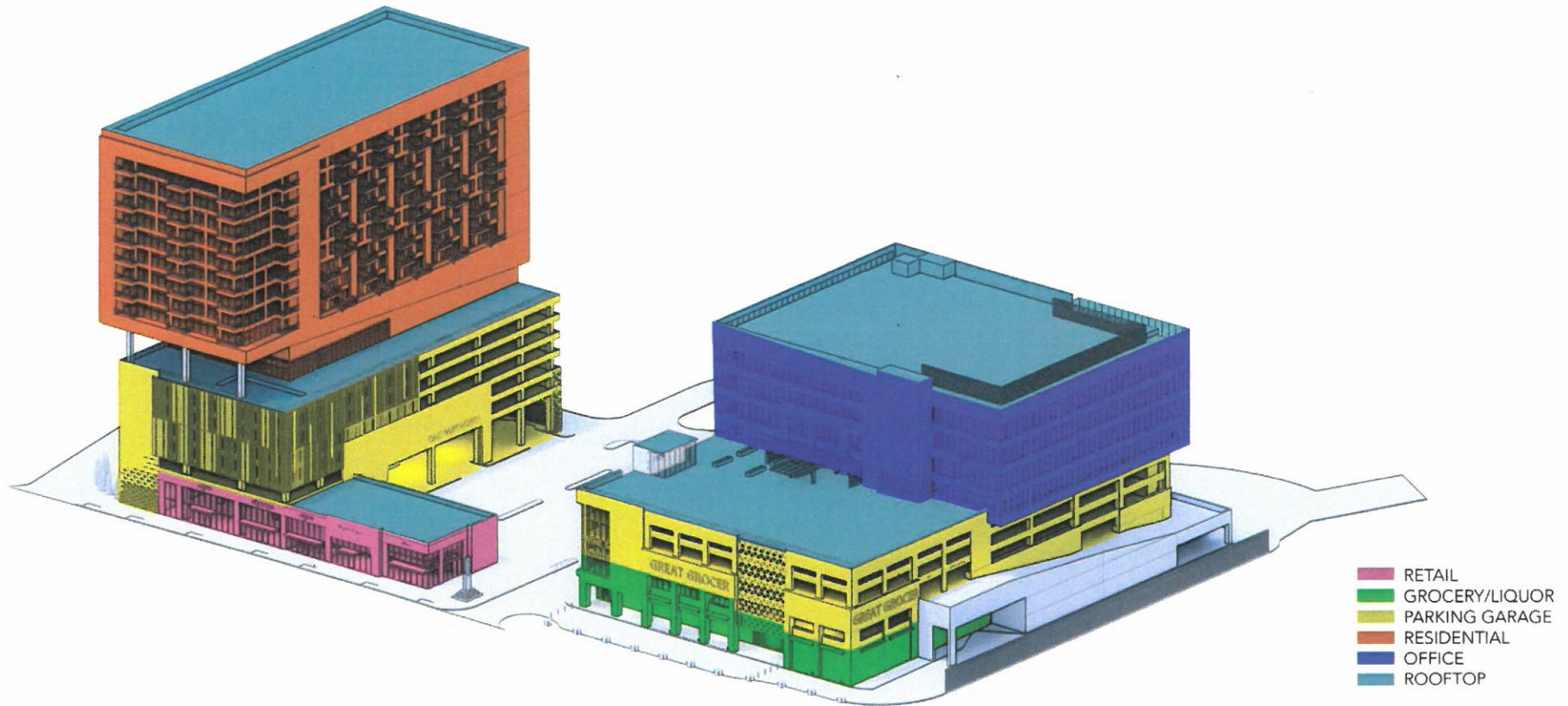
Rooftop Uses:

- Green Space and Pools
- Event Space
- Restaurant Outdoor Dining
- Solar Panels
- Screening
- Mechanical Equipment and Elevators

Received Nov. 07, 2022

Planning & Design Services

22-ZONE-0043



PLANNED DEVELOPMENT USE MAP

ONE PARK – North is designed differently than ONE PARK – South, with greater differentiation of uses and structures, differing setbacks necessitated by the distinct uses: grocery and associated retail, residential, office and two types of parking – both ground level and parking garage located. Street level retail businesses will be visible and accessible along the Lexington Road streetscape. Structured parking is located at the interior of the site inside two different structures with multiple access points, whereas surface parking between the structures is necessitated by the grocery.

The two main structures (one rising to 10 and the other rising to 17 stories) contribute to the mixed-use concept, occupied at upper levels by offices or a hotel and/or residential uses, much the same as at ONE PARK – South, except that both ONE PARK sites are unlikely to contain a hotel. Parking is associated with each at mid levels, and retail uses are found at ground levels.

Due to the wide range of uses and their opening and closing times, ONE PARK – North will have 24 hours of operation. Trash pickup will occur between 7am and 7pm.

DIMENSIONAL REQUIREMENTS

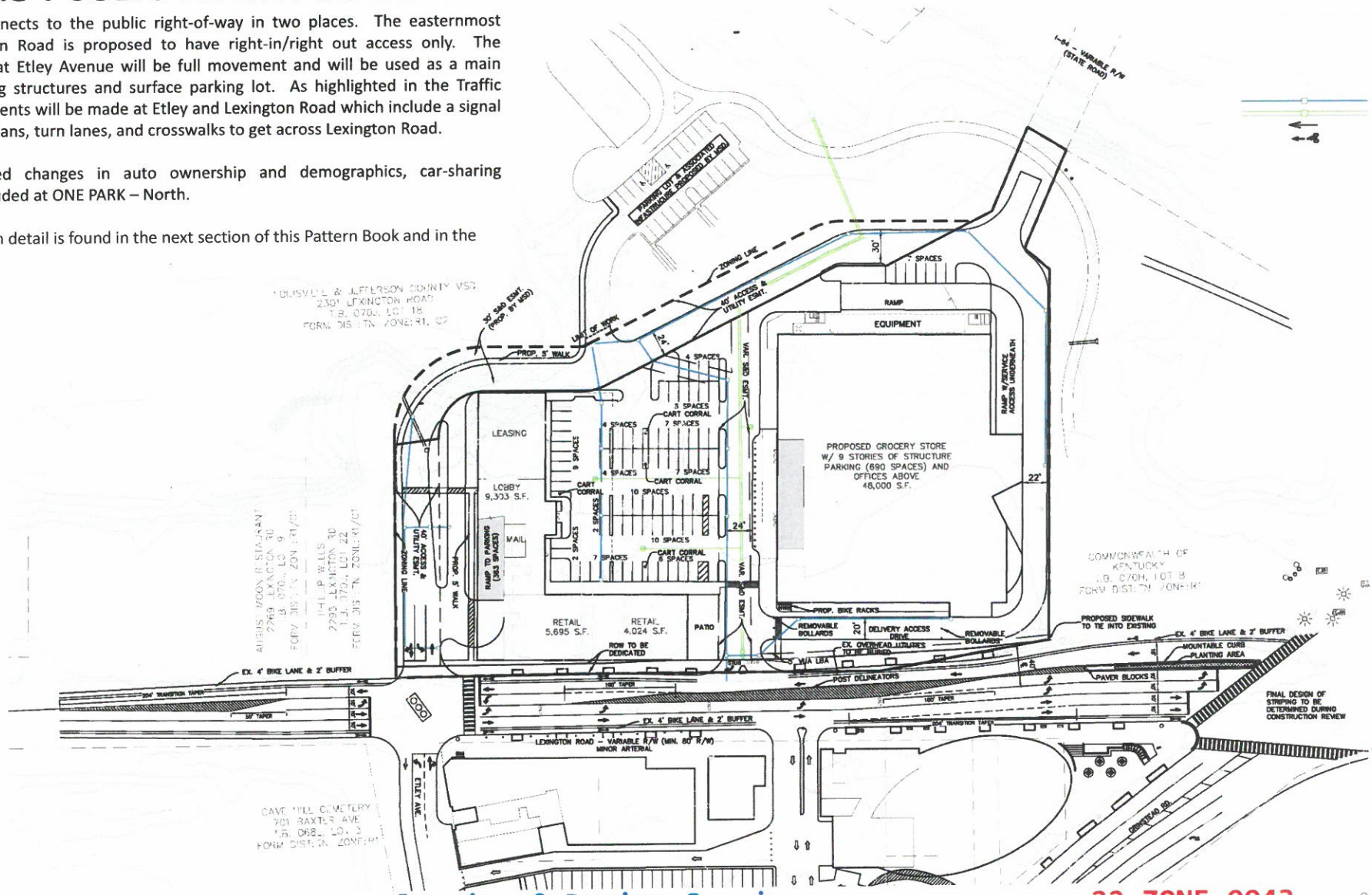
- Ground floor offset of the façade shall be allowed to vary between 0 and 15 feet from the property lines.
- Balconies shall be allowed to overhang into the right-of-way.
- First floor shall be 22 feet tall (floor to floor).
- One tower shall be allowed to a maximum height of 17 stories from ground level, and the other shall be allowed to a maximum height of 10 stories in height.
- Red lights will be placed on the building to assist with air safety.
- The maximum FAR shall be 3.0
- The maximum dwelling units per acre shall be 60 du/ac.

VEHICLE CIRCULATION - ACCESS, RIDE SHARE AND PUBLIC TRANSPORTATION

ONE PARK – North connects to the public right-of-way in two places. The easternmost entrance onto Lexington Road is proposed to have right-in/right out access only. The westernmost entrance at Etlely Avenue will be full movement and will be used as a main conduit into the parking structures and surface parking lot. As highlighted in the Traffic Impact Study, improvements will be made at Etlely and Lexington Road which include a signal for vehicles and pedestrians, turn lanes, and crosswalks to get across Lexington Road.

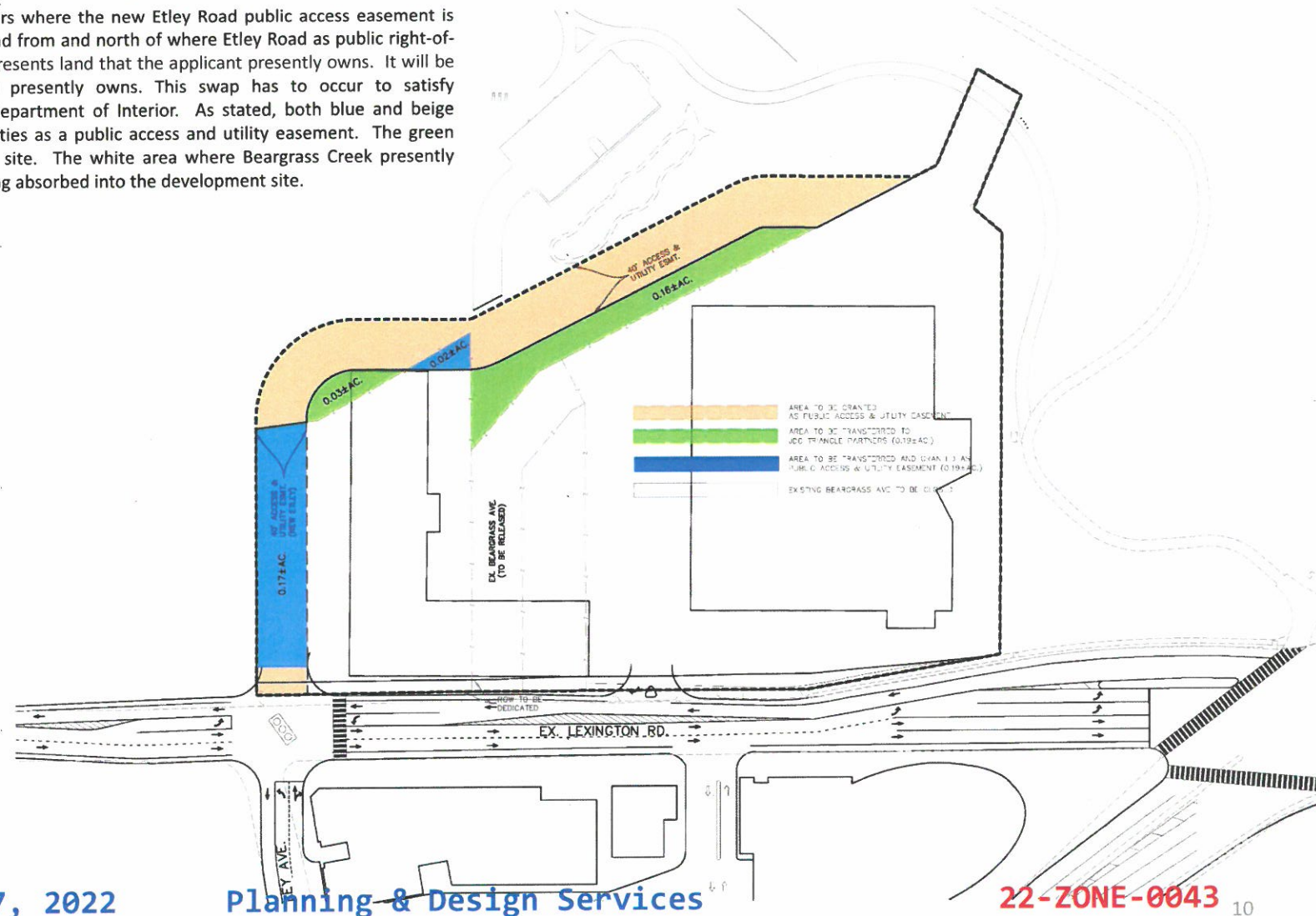
Due to the anticipated changes in auto ownership and demographics, car-sharing pickup/drop off are included at ONE PARK – North.

Further traffic circulation detail is found in the next section of this Pattern Book and in the Traffic Impact Study.



VEHICULAR CIRCULATION – ROAD CLOSING, ROAD DEDICATION, ROAD EASEMENT AND RESULTING LAND SWAP PLAN

This illustration shows in blue and beige colors where the new Etley Road public access easement is proposed to be, which is across Lexington Road from and north of where Etley Road as public right-of-way presently terminates. The blue color represents land that the applicant presently owns. It will be exchanged for green property which MSD presently owns. This swap has to occur to satisfy requirements imposed on MSD by the US Department of Interior. As stated, both blue and beige properties end up being granted by both parties as a public access and utility easement. The green area will be absorbed into the development site. The white area where Beargrass Creek presently exists is proposed to be closed, thereafter being absorbed into the development site.

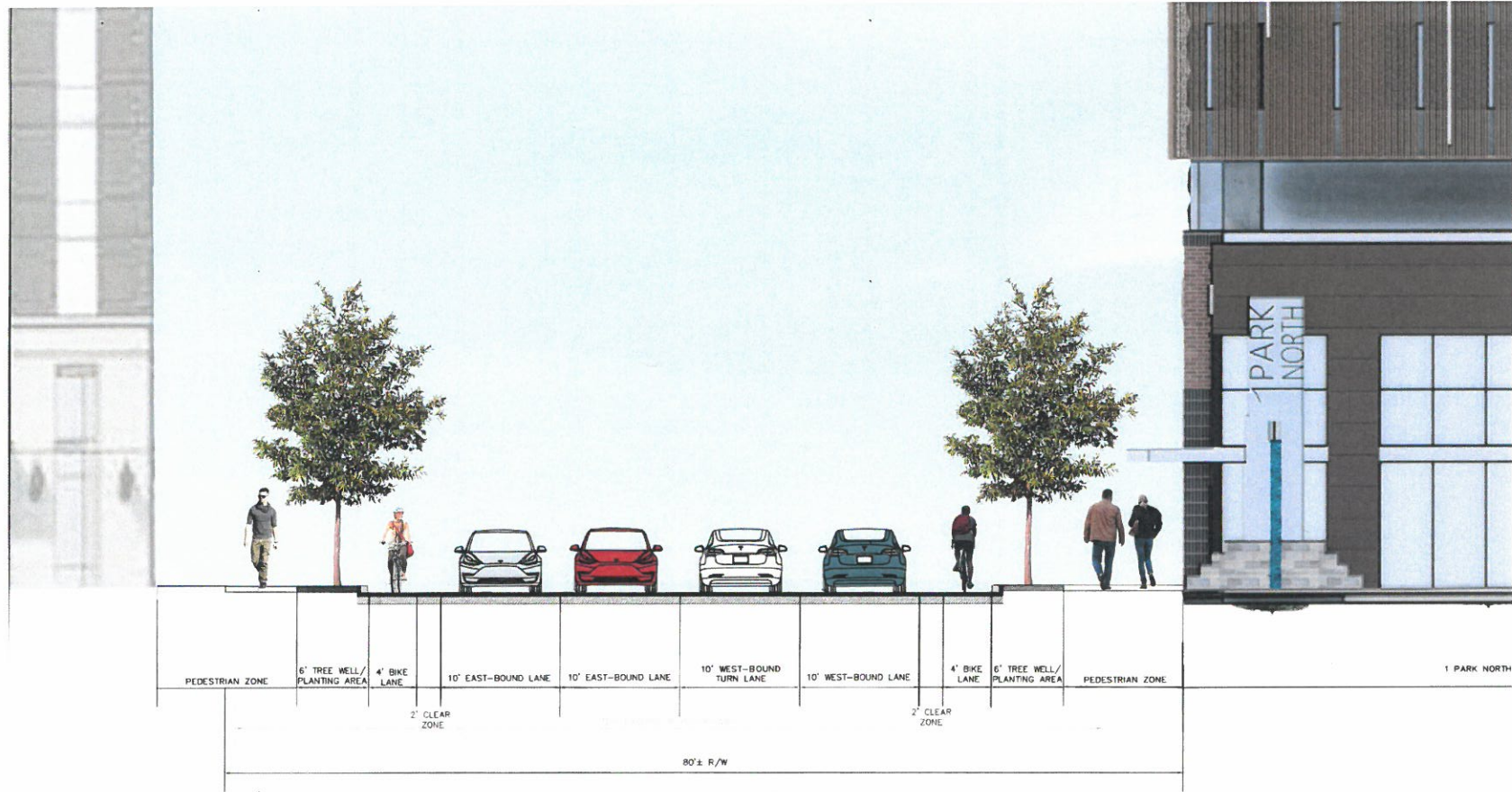




EAST LEXINGTON ROAD CROSS-SECTION, INCLUDING BICYCLE CIRCULATION

ONE PARK – North will encourage alternate modes of transportation such as cycling. New bike paths were added on Lexington Road in September of 2017. Nearby bike lanes were added on Grinstead Drive in 2015. Beargrass Greenway appears on this side of Lexington Road at the intersection. And the approximately 389 acres of Cherokee Park and 531 acres of Seneca Park where bicycling is accommodated, are just on the other side of Grinstead Drive from the site.

ONE PARK – North, like ONE PARK – South, could be the location for bike-related uses such as bike shops, bike repair, short-term bike parking (bike racks) at street level, and long-term bike storage in the parking structures. Riding on the sidewalk, other than at the intersection of Lexington and Grinstead is not allowed per city ordinance, but cyclists are encouraged to walk their bikes on the sidewalks along the business frontages where there will be bike racks.



WEST LEXINGTON ROAD CROSS-SECTION, INCLUDING PEDESTRIAN CIRCULATION

Pedestrian at-grade connections across the roadways are proposed at signalized intersections. And, if technically and financially feasible and ultimately governmentally permitted, there is the possibility of elevated pedestrian “bridges” above Lexington Road and/or Grinstead Drive. This increases the connections to the surrounding neighborhoods and this development’s connections to neighborhoods, Butchertown Greenway and Cherokee Park.

The streetscape along Lexington Road will be enhanced even further by the proposed ONE PARK – North development. The area currently has broken sidewalks, where sidewalks exist, and little to no tree canopy and pedestrian lighting. The proposed development presents a cohesive streetscape that unifies the block and vastly improves the pedestrian environment. The pedestrian walking/clear zone will have a minimum of 5 feet clear of obstacles. Street-side amenities include bike parking, pedestrian lighting and street trees and may include café seating.

ONE PARK – North furthers the 2015 Lexington Road Corridor Transportation Plan by providing a destination with positive pedestrian uses in the neighborhood as well as providing good examples of streetscapes that accommodate different types of travel.

ONE PARK – North proposes what ONE PARK – South alone could not achieve -- an improved, signalized intersection at Lexington Road and Etley Avenue that would allow for a pedestrian crossing in a safe manner. This also works with the TARC stops along Lexington Road where bus riders can get off at Seneca Park and then travel back by catching a bus going in the other direction.

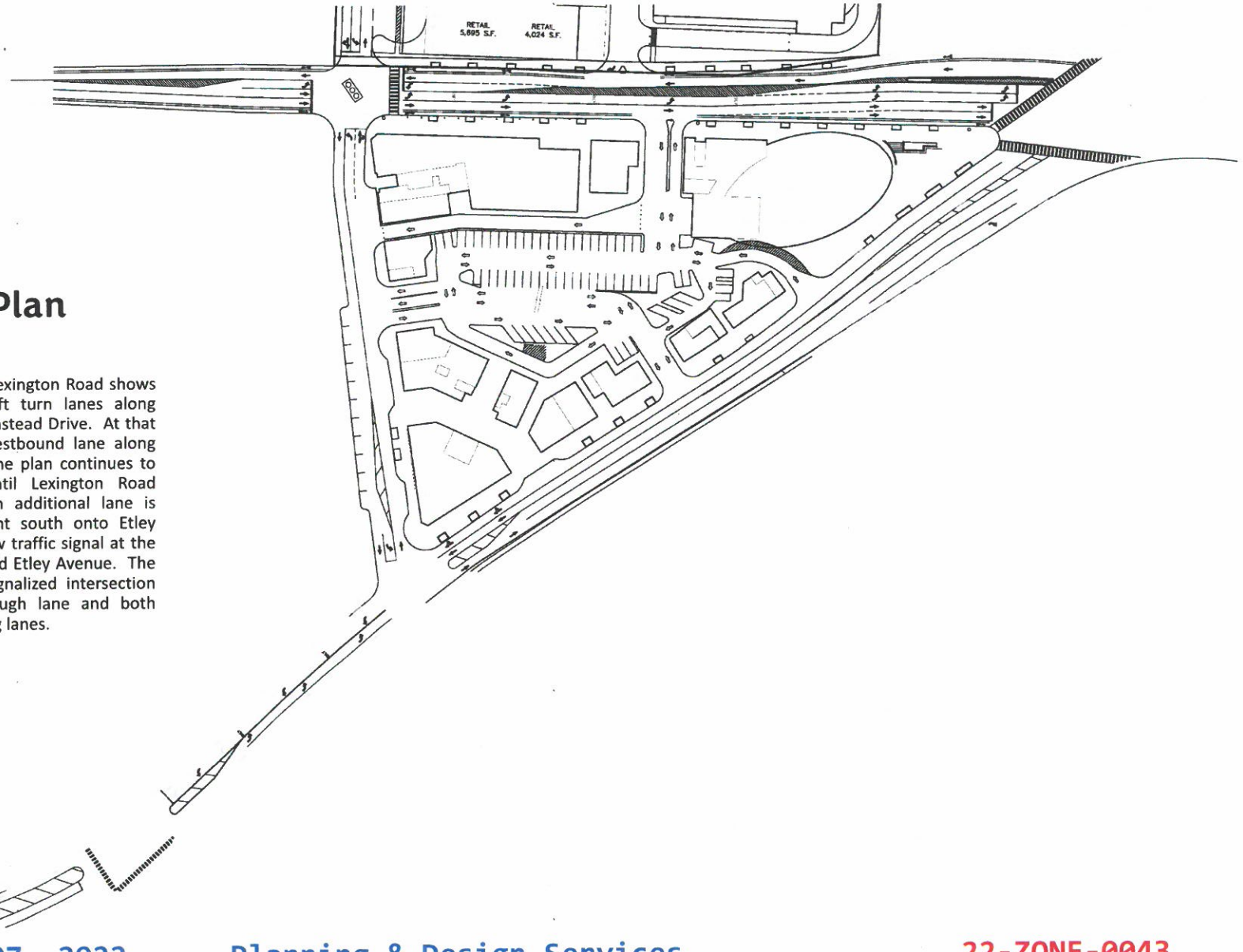
Received Nov. 07, 2022

Planning & Design Services

22-ZONE-0043 12

Road Striping Plan

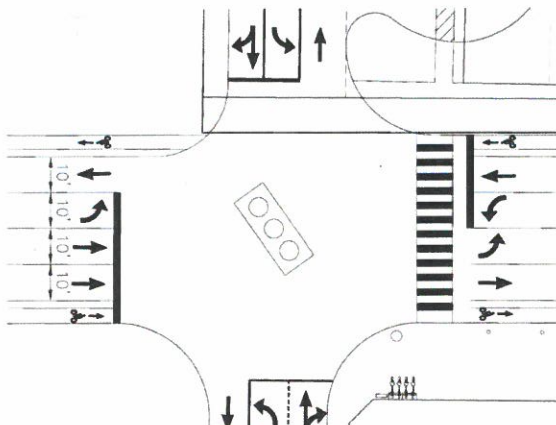
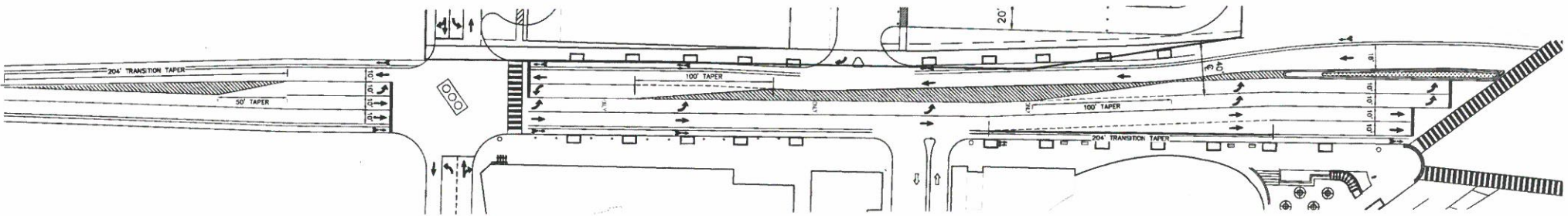
The plan for lane striping along Lexington Road shows two through lanes and two left turn lanes along eastbound Lexington Road at Grinstead Drive. At that location the plan shows one westbound lane along Lexington Road. Moving west, the plan continues to show one westbound lane until Lexington Road reaches Etle Avenue where an additional lane is added for a left turn movement south onto Etle Avenue. This plan assumes a new traffic signal at the intersection of Lexington Road and Etle Avenue. The resulting striping plan at this signalized intersection will include a northbound through lane and both eastbound and westbound turning lanes.



Road Striping Plan

The plan for lane striping along Lexington Road shows two through lanes and two left turn lanes along eastbound Lexington Road at Grinstead Drive. At that location the plan shows one westbound lane along Lexington Road. Moving west, the plan continues to show one westbound lane until Lexington Road reaches Etley Avenue where an additional lane is added for a left turn movement south onto Etley Avenue. This plan assumes a new traffic signal at the intersection of Lexington Road and Etley Avenue. The resulting striping plan at this signalized intersection will include a northbound through lane and both eastbound and westbound turning lanes.

Lexington Road



Received Nov. 07, 2022

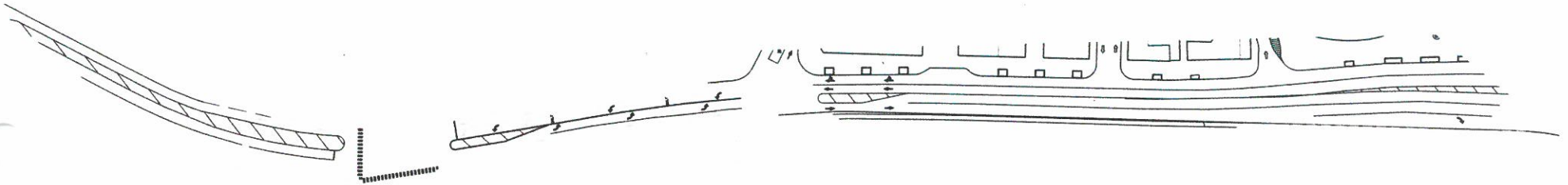
Planning & Design Services

22-ZONE-0043¹⁴

Road Striping Plan

The plan for lane striping along Lexington Road shows two through lanes and two left turn lanes along eastbound Lexington Road at Grinstead Drive. At that location the plan shows one westbound lane along Lexington Road. Moving west, the plan continues to show one westbound lane until Lexington Road reaches Etley Avenue where an additional lane is added for a left turn movement south onto Etley Avenue. This plan assumes a new traffic signal at the intersection of Lexington Road and Etley Avenue. The resulting striping plan at this signalized intersection will include a northbound through lane and both eastbound and westbound turning lanes.

Grinstead Drive





INTERNAL VEHICULAR CIRCULATION AND PARKING

Parking for the various uses is internal to ONE PARK – North using surface level and structured parking. Multiple access points are made into the parking lot and structures.

Approximately 1072 structured and 85 surface parking spaces are provided. Actual parking minimums for each use and the development as a whole will be satisfied, and LDC parking standards are also met. Residential use parking is based on 1 parking space per bedroom. Hotel parking is based on one parking space per hotel room. Office parking is based on 1 space per 220 square feet. Restaurant parking is 1 space per 400 square feet.

Parking proposed by the current uses are shown on the development plan, but this Pattern Book gives the flexibility for parking to fluctuate with different uses due to transit ridership and captured trips from the mixed use of these buildings. Based on current LDC standards, there is a 10% reduction in parking due to the full-service transit provided by TARC.

The Traffic Impact Study also indicates a 14% reduction in parking needed due to “captured trips” – meaning a person using a combination of the uses does not generate new travel trips or parking needs. When the need for parking decreases due to demographic and social changes in car usage, this plan may allow for the parking area to be used in new ways which may include storage, new retail space, new residential units, service-based businesses, and vehicular/mobile-based businesses.

STREETSCAPE AMENITIES

Pavement types for the streetscape include using sustainable concrete with fly ash and coated with a pebble finish. The fly ash is a byproduct of burning coal, but it is useful as a cement additive to create denser, stronger concrete. Pebble finish will be used to match the character of the surrounding neighborhoods. Porous pavements such as concrete, clay, and porcelain pavers will be used in the areas between tree wells adjacent to the street. This will infiltrate water from the sidewalk and help the growth of the trees as their roots expand past the tree wells. All sidewalks shall be ADA compliant at the crosswalks and along the building fronts. Other materials may include accents with stone, manufactured stone, concrete products, and porcelain products.

Street trees add canopy, creating shade for pedestrians at ONE PARK – North. Street trees will absorb infiltrated water from the permeable pavers, thus reducing urban runoff. Tree wells will be oblong, taking in more area for their roots to grow strong. Lengthened tree wells provide more room for additional shrubs and perennials to further buffer vehicular traffic. Diverse plant selection will add variety to the streetscape and reduce the effect of weather-related injury and/or disease from pests. Trees at time of planting shall start at 3 inches in diameter.

Street amenities include the following elements:

- Bike racks - Bike storage (short-term)
- Bike fix-it station(s)
- Benches
- Water feature
- Bollards with lighting
- Building Information Kiosks
- Café seating and tables
- Canvas canopies/awnings
- Drinking fountains (with dog bowl)
- LED lighting features and electrical connections for smart devices
- Neighborhood identity banners
- Outdoor power station for mobile devices
- Planter boxes/pots
- Streetlights
- Trash Receptacles
- Tree wells to take in stormwater
- Tree well guards
- Wi-Fi availability

As a part of active street life, outdoor dining is allowed along building frontages and in the sidewalk right-of-way per City Ordinance.



Received Nov. 07, 2022

Planning & Design Services

17
22-ZONE-0043

STREET PLANTINGS

Street trees will be chosen that respond well in urban conditions. Since ONE PARK – North varies in lighting and activity, plants will not be homogeneous. Instead, a variety of trees shall be used to diversify the species to have a healthy plant community. Tree species will also tend to match to the street trees found on other parts of the road corridors. Trees may be grouped in series but not more than four of one variety in a series. All trees shall be limbed up to a minimum of 5' high at the time of planting.

Bushes, grasses, perennials, and annuals shall be a part of the planting spaces and containers/planters to create a rich environment for people experiencing the block whether driving or walking. Plants shall be diverse including evergreens for year-round appeal. Plants shown in the Pattern Book are examples of quality planting but shall not be a limiting list. Any plants used or replaced shall be done with the recommendation of a Landscape Architect or Certified Arborist.

At the time of construction, the best techniques and research for growing healthy trees and other plants shall be considered a part of the whole streetscape system. A modular suspended pavement system or structural soil in combination with permeable pavers between the tree wells will create a better plant growing environment and take in stormwater from the sidewalk as research recommends.



TREES ALONG LEXINGTON

- London Planetree - *Platanus x acerifolia*
- Thornless Honey Locust – *Gleditsia tricanthos* var. *inermis*
- American Elm – *Ulmus americana* 'Princeton'
- Littleleaf Linden - *Tilia cordata*
- Scarlet Oak – *Quercus coccinea*

Received Nov. 07, 2022

Planning & Design Services

18
22-ZONE-0043



SHRUBS

- Boxwood - *Buxus* 'Green Velvet' or 'Wintergreen'
- Sky Pencil Japanese Holly – *Ilex crenata* 'Sky Pencil'
- Juniper - *Juniperus chinensis* 'Torulosa' or 'Kaizuka Variegata' or 'Nick's Compact' or 'Pfizeriana Compacta'
- Youngstown Andorra Juniper - *Juniperus horizontalis* 'Youngstown'
- Dwarf Japanese Garden Juniper – *Juniperus procumbens* 'Nana'
- Rainbow Leucothoe - *Leucothoe fontanesiana* 'Girard's Rainbow'
- Flirt Heavenly Bamboo - *Nandina domestica* 'Murasaki'
- Arborvitae - *Thuja occidentalis* 'Sunkist' or 'Rheingold' or 'Deerroot's Spire'

GRASSES AND PERENNIALS

- Blue Festuca - *Festuca glauca* 'Elijah Blue'
- Wild Geranium - *Geranium maculatum*
- Lenten Rose - *Heleborus orientalis*
- Monkey grass - *Liriope muscari* 'Big Blue' or 'Majestic' or 'Variegata'
- Green Carpet Japanese Spurge - *Pachysandra terminalis* 'Green Carpet'
- Burgundy Bunny Dwarf Fountain Grass-- *Pennisetum alopecuroides* 'Burgundy Bunny'
- Dwarf Fountain Grass - *Pennisetum alopecuroides* 'Hameln'
- Little Bunny Dwarf Fountain Grass-- *Pennisetum alopecuroides* 'Little Bunny'
- Candy Poppy - *Styloporum diphyllum*

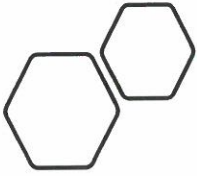
ANNUALS

- Impatiens
- Pansy - *Viola* spp.
- Petunias
- Purple Kale
- Sweet Potato Vine - *Ipomoea batatas* or 'Midnight Lace' or 'Sweet Caroline Sweetheart Red'

Received Nov. 07, 2022

Planning & Design Services

19
22-ZONE-0043



COMMON AREA AND EVENT SPACE

Roof space can be used as common area and event space for ONE PARK – North. These areas may include a restaurant, green roofs, residential gardens, perennials, shrubs, trees, and pools. Further details will be made at the time that structural drawings are produced when actual uses are known and that distribute the weight of barriers, growing media, plants, and water.



Received Nov. 07, 2022

Planning & Design Services

22-ZONE-0043



SIGNS

At first floor level, each separate occupant of each building will be entitled to one sign per building facade, not to exceed 60 square feet in area. Additionally, three façade signs will be allowed near the top and also near the mid-points of the 17-story building, the 10-story building and the grocery building structures, for a total of 9 upper-level and 9 mid-point signs. The maximum size of each of these signs is 100 SF each. Only one of each at these 3 groups of signs will face Lexington Road, one will face Grinstead Drive, and one will face I-64. Signs will be internally lit or backlit.

Canopies/awnings to a maximum additive size of 60 SF per tenant per façade will also be allowed at street level. If the signs are lit, they shall be internally or backlit. Window displays are encouraged to engage the pedestrians along the street, but tenant signs are not allowed to cover the entire window. Signs which revolve, rotate or move shall not be permitted.

Wayfinding signs are permitted throughout the development as needed.

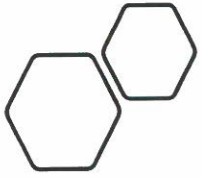
Elevations on these pages show the look and feel of ONE PARK – North signs. The text shown for all the signs in the illustration is placeholder text for future business and tenant text and logos.



BUILDING LIGHTING

Building lighting may be mounted to the exterior walls to illuminate the architecture and highlight ground floor uses. Building lighting shall be allowed to overhang into the right-of-way as needed since the property line is the build-to line. Exterior lighting toward signs may be used in a manner that follows the LDC lighting levels.

Streetscape lighting may be placed between the tree wells to adequately light the pedestrian ground plane. City and KYTC regulations regarding lighting and drivers shall be followed.



BUILDING DESIGN AND MATERIALS

ONE PARK – North exterior building design is dynamic in that it responds to a less traditional design language than ONE PARK – South. That is because its major influences, far less so than ONE PARK – South, are Lexington Road and I-64. A pedestrian scale is maintained at the lower levels along Lexington Road to respect such usage. Building materials may consist of stone, brick, metal, glass, precast concrete and cast stone.

ONE PARK – North will have:

- Building materials that are recycled and recyclable
- Eco-friendly lumber
- Extensive green roof design (3-6" depth)
- Intensive green roof design (6" depth or more)
- High-performance HVAC system
- High-quality indoor air quality
- Porous pavers for infiltrating storm water
- Solar panels as balcony shades (viewable from lower levels)
- Solar panels on rooftops not used as common areas
- Tree wells that take in storm water
- Windows that absorb less heat

The possibility of a sustainable green roof where shown on drawings included in this Pattern Book, is intended for the residents and possibly business guests to provide more green space that wouldn't otherwise exist.

Despite being near Cherokee Park and Cave Hill Cemetery, most of the existing site is covered in impervious surfaces. This causes stormwater and runoff issues that can damage the surrounding environments. ONE PARK – North will incorporate green roofs, permeable pavements, water-gathering tree wells, as well as other rain gathering and reuse strategies to mitigate stormwater runoff. It is intended that ONE PARK will improve the land and the environment around it.

The ONE PARK – North block, like the ONE PARK – South block, has been under-utilized for decades by being auto focused. Both sites have the capacity to fill housing, work and stay needs that this area cannot attain in nearby neighborhoods. As such, they can transition into being a strong, progressive architectural voice in Louisville, establishing models for mixing uses that provide needed services to the surrounding communities and creating a gateway that not only serves, but enhances nearby neighborhoods.



Received Nov. 07, 2022

Planning & Design Services

22-ZONE-0043

South Facing Facade



North Facing Facade



Received Nov. 07, 2022

Planning & Design Services

22-ZONE-0043²³

East Facing Facade

West Facing Facade



West Facing Facade



East Facing Facade

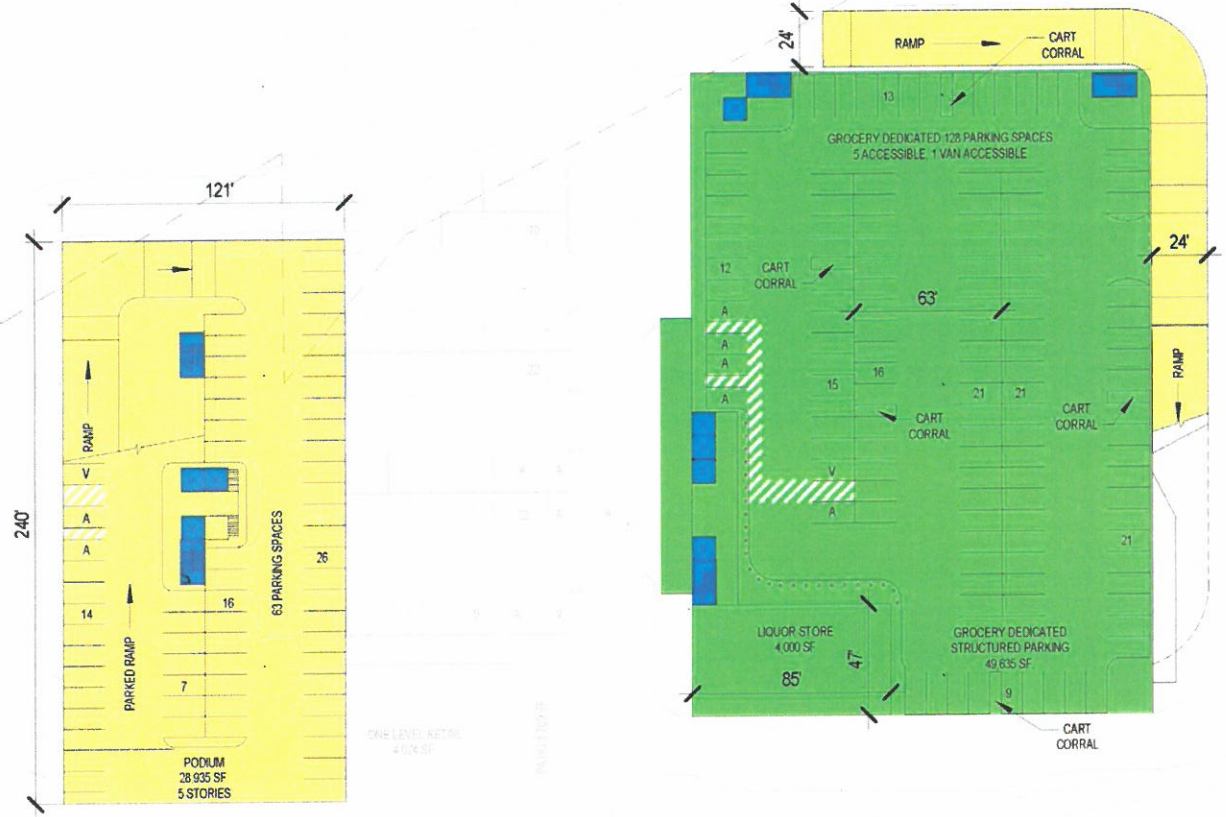


Received Nov. 07, 2022

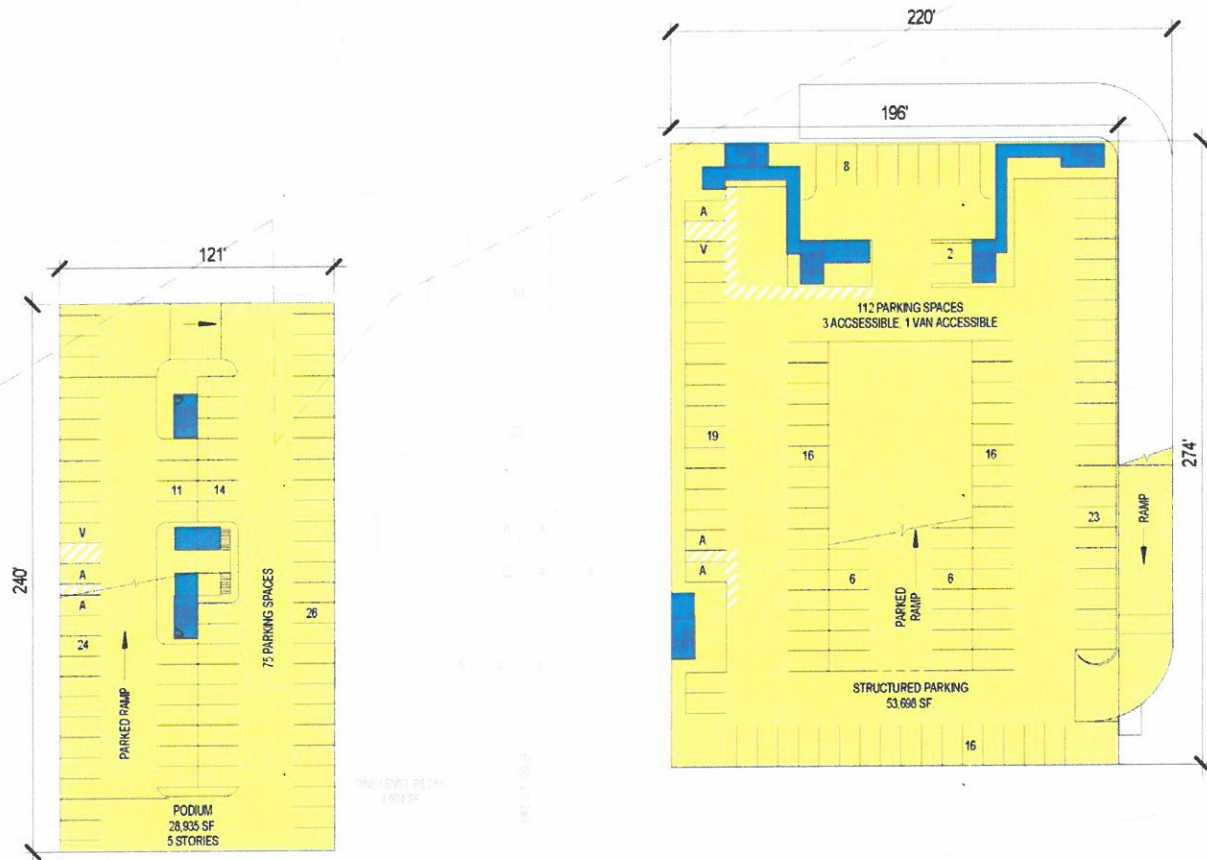
Planning & Design Services

25
22-ZONE-0043

**Site Plan
Level 2**



Site Plan
Level 3

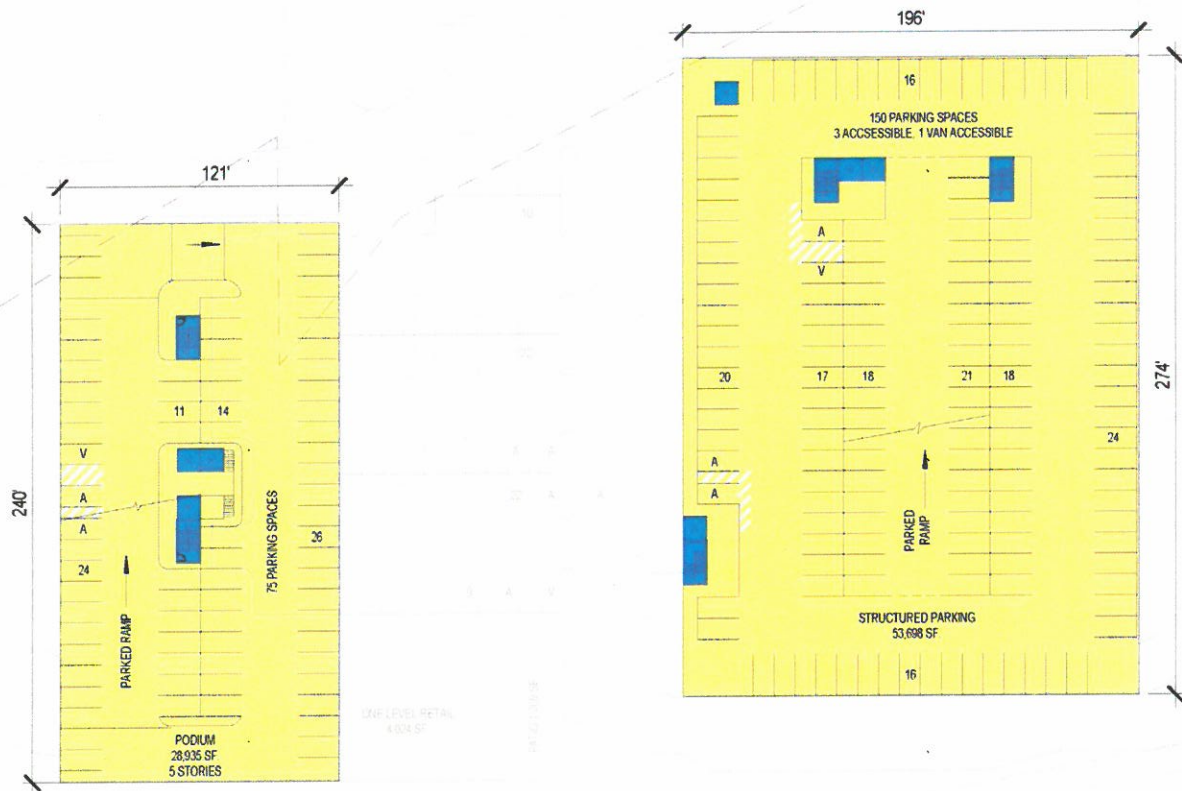


Received Nov. 07, 2022

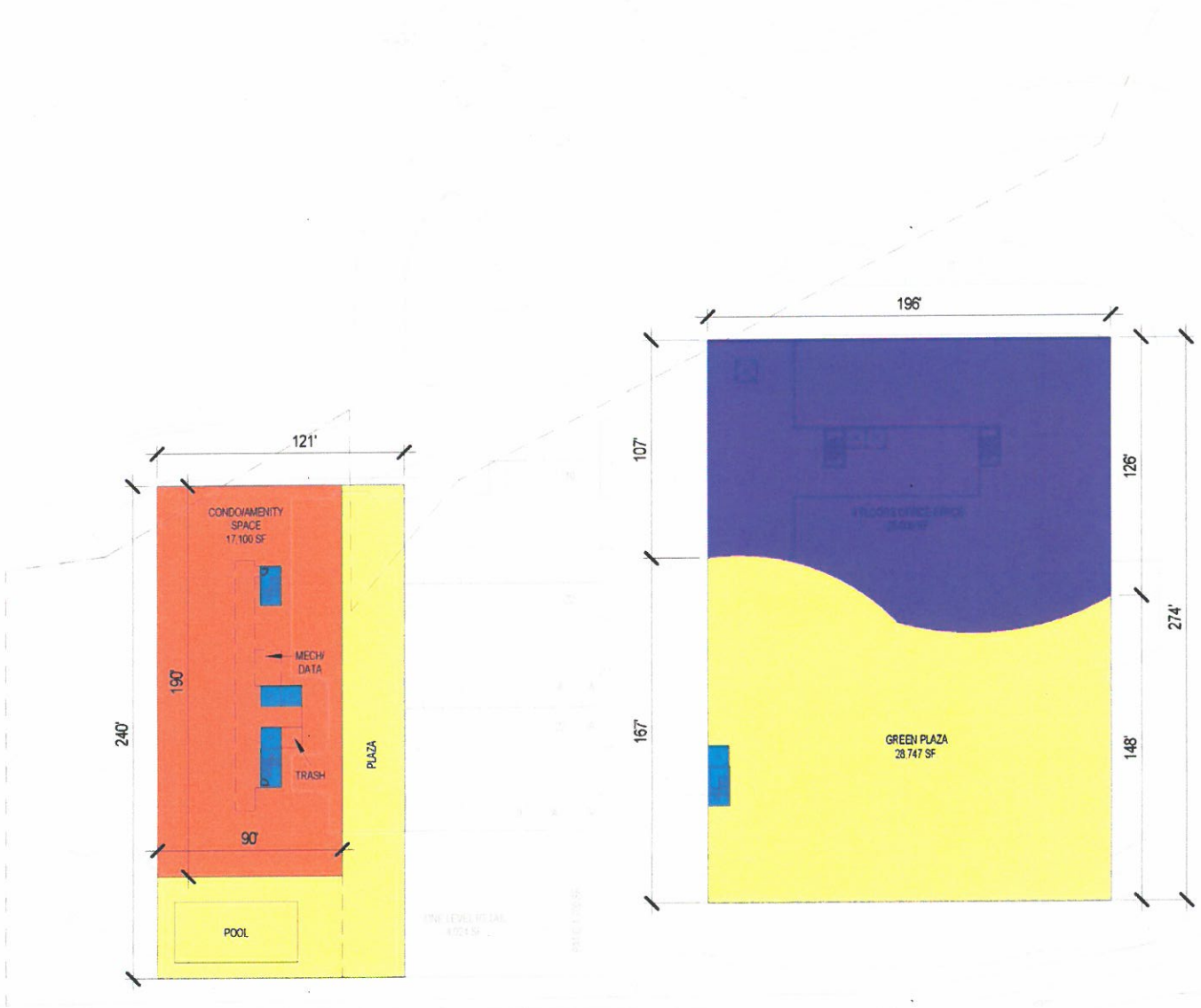
Planning & Design Services

22-ZONE-0043²⁷

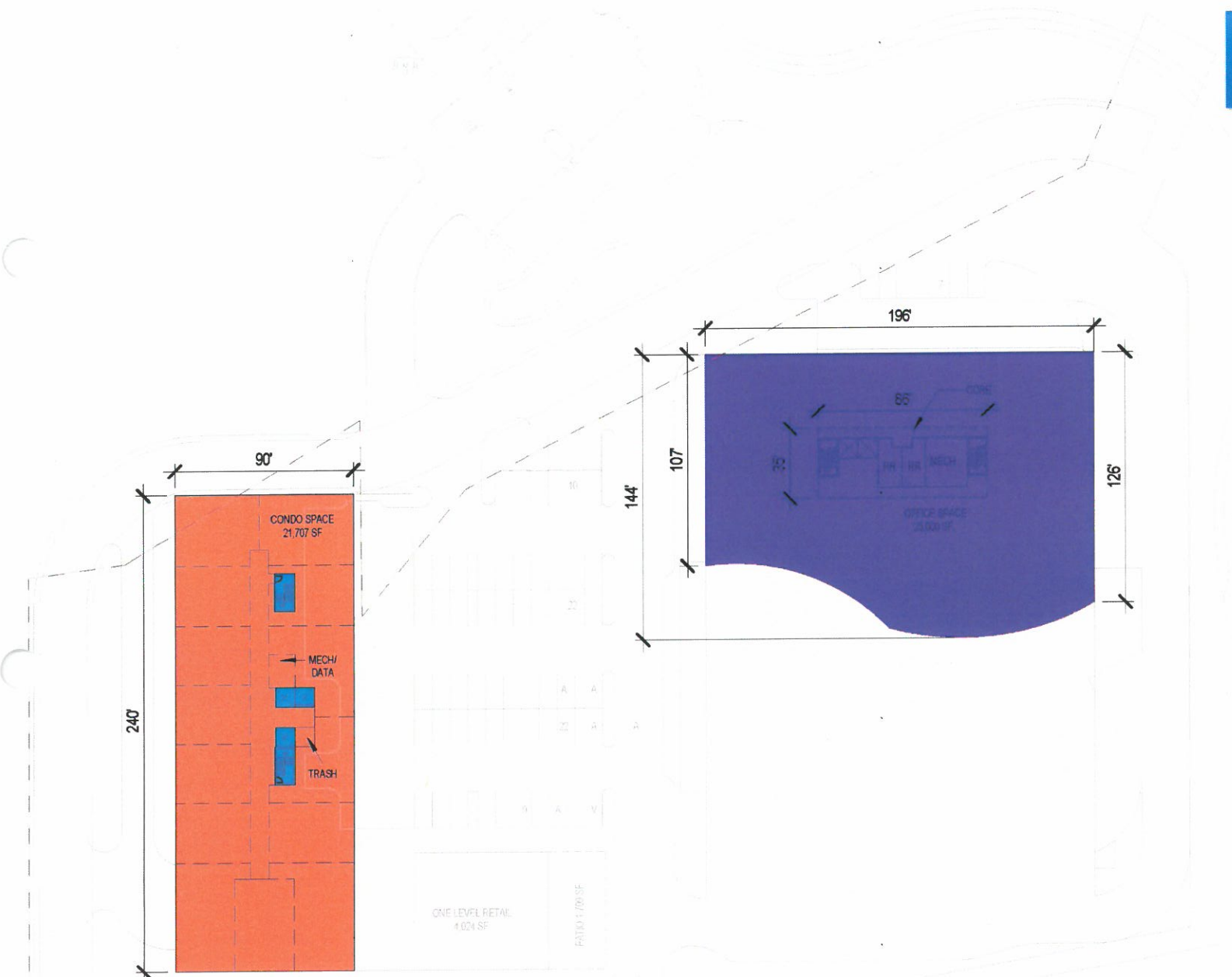
**Site Plan
Levels 4-6**



Site Plan
Level 7



Site Plan
Levels 8-10

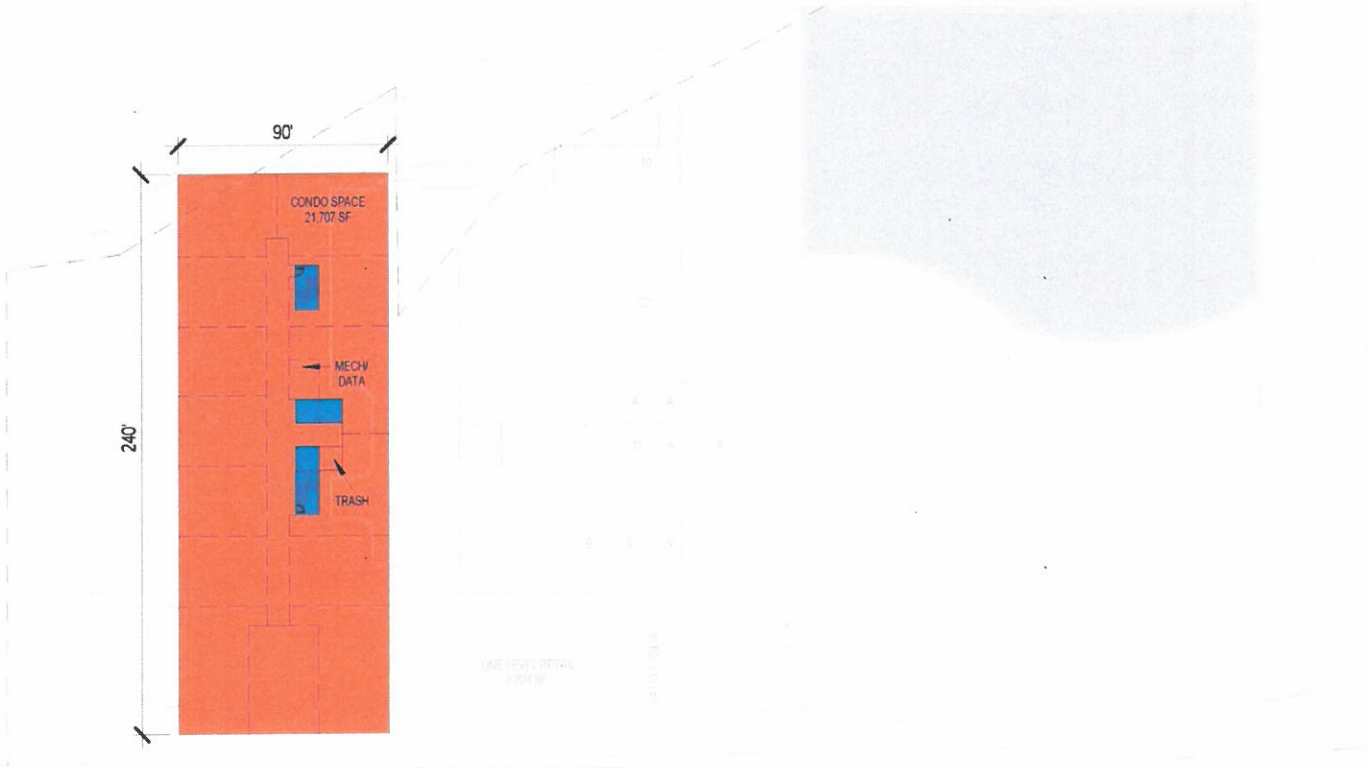


Received Nov. 07, 2022

Planning & Design Services

22-ZONE-0043³⁰

**Site Plan
Level 11-17**



Louisville Metro Planning Commission Public Hearing - December 1, 2022

Louisville Metro Land Development & Transportation Committee - October 13, 2022 and October 27, 2022

Neighborhood Meeting/Charrettes - September 27, 28, and 29, 2021, October 12, 2021, March 16, 2022

ONE PARK NORTH

Docket No. 22-ZONE-0043 &
22-STRClosure-0017

Zone Change from R-1, R-6, C-1
and C-2 to PDD (Planned
Development District) with a
Waiver and a Road Closure of
Beargrass Avenue

2297, 2301, 2313, 2345
Lexington Road

Developed by:

JDG Triangle Partners, LLC

Attorney: Bardenwerper Talbott & Roberts, PLLC

Land Planner, Landscape Architects & Engineers:

Mindel Scott & Associates

Architects: DNK

Traffic Engineer: Diane B. Zimmerman

Traffic Engineering, LLC





PDD PATTERN BOOK TABLE OF CONTENTS

Development Overview

- 3 Location Characteristics
- 3 Current Conditions
- 3 History
- 4 Development Vision
- 5 Benefits to the Community
- 6 Charrette – Resulting Plan

Land Use

- 7 Permitted Land Uses
- 7 Limited Uses
- 7 Prohibited Uses
- 8 Planned Development Use Map
- 8 Dimensional Requirements

Transportation Mobility Plan

- 9 Vehicle Circulation – Access, Ride Share and Public Transportation
- 10 Vehicular Circulation – Road Closing, Road Dedication, Road Easement and Resulting Land Swap Plan
- 11 East Lexington Road Cross-section, Including Bicycle Circulation
- 12 West Lexington Road Cross-section, Including Bicycle Circulation
- 13 Road Striping Plan
- 16 Internal Vehicular Circulation and Parking

PD Design Guidelines

- 17 Streetscape Amenities
- 18 Street Plantings
- 18 Trees Along Lexington
- 19 Shrubs
- 19 Grasses and Perennials
- 19 Annuals
- 20 Common Area and Event Space
- 21 Signs
- 21 Building Lighting
- 22 Building Design and Materials
- 26 Development Plans

DEVELOPED BY:

IDG TRIANGLE PARTNERS, LLC

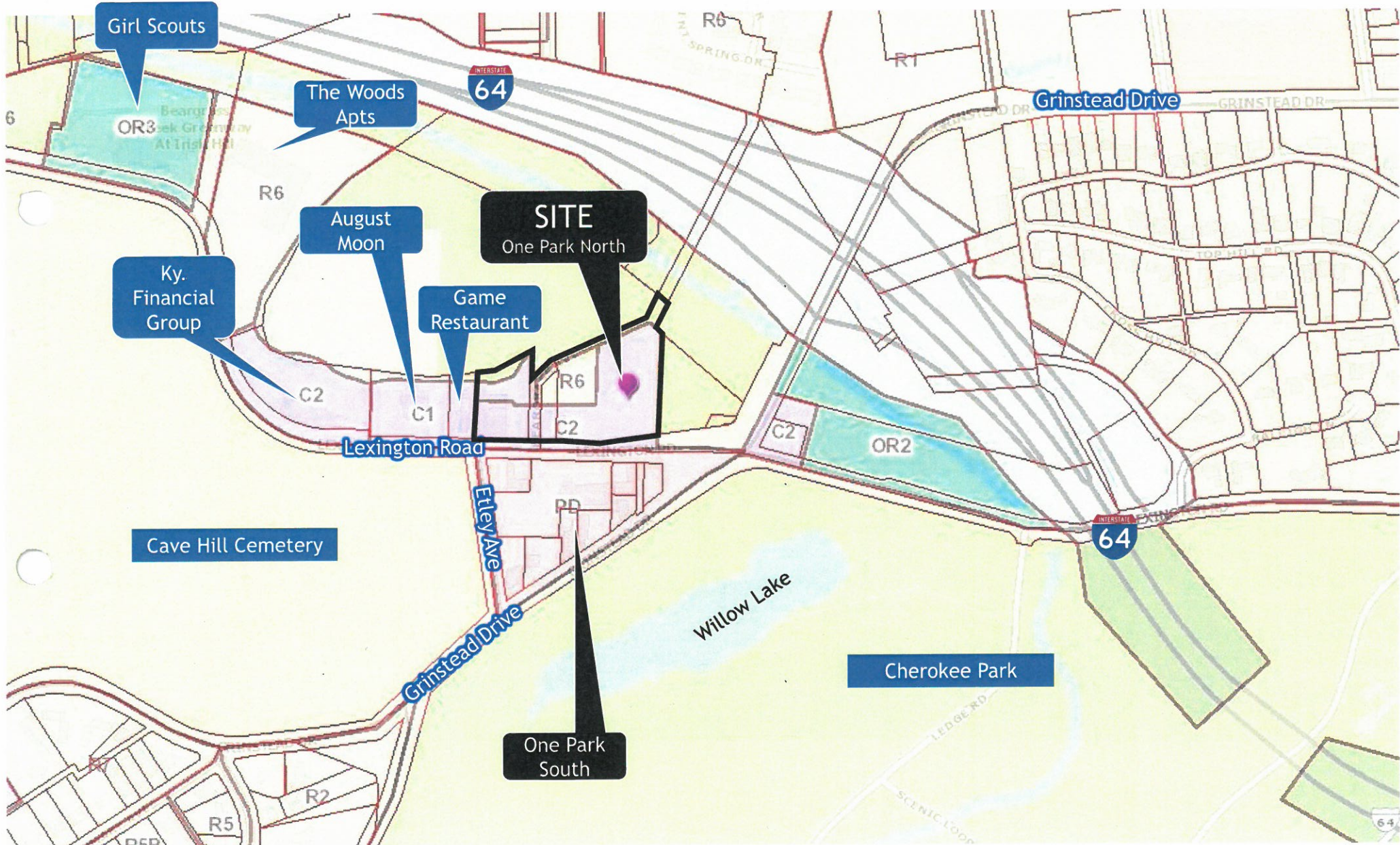


Bardenwerper
Talbott & Roberts, PLLC



MINDEL SCOTT





Girl Scouts

The Woods Apts

August Moon

Game Restaurant

Ky. Financial Group

Cave Hill Cemetery

One Park South

Cherokee Park

SITE
One Park North

Grinstead Drive

Lexington Road

Eley Ave

Grinstead Drive

64

64

R6

R6

R6

R2

R5

OR2

OR3

Willow Lake

LEDGER RD

SCENIC LOOP

64



Girl Scouts

The Woods Apts

SITE
One Park North

August Moon

Ky. Financial Group

Game Restaurant

Cave Hill Cemetery

Willow Lake

One Park South

Cherokee Park

Grinstead Drive

Lexington Road

Grinstead Drive

64

64

R6

R6

C2

C1

R6

64

C2

OR2

R1

G1

R5B

R5

R2

SCENIC LOOP

COCHMAN HILL RD

KALLIGH LN

TOP HILL RD

CROSS MILL RD

CRESCENT SPRING DR

SAUN

SSON AVE

JAY LN

SEMINARY

UP

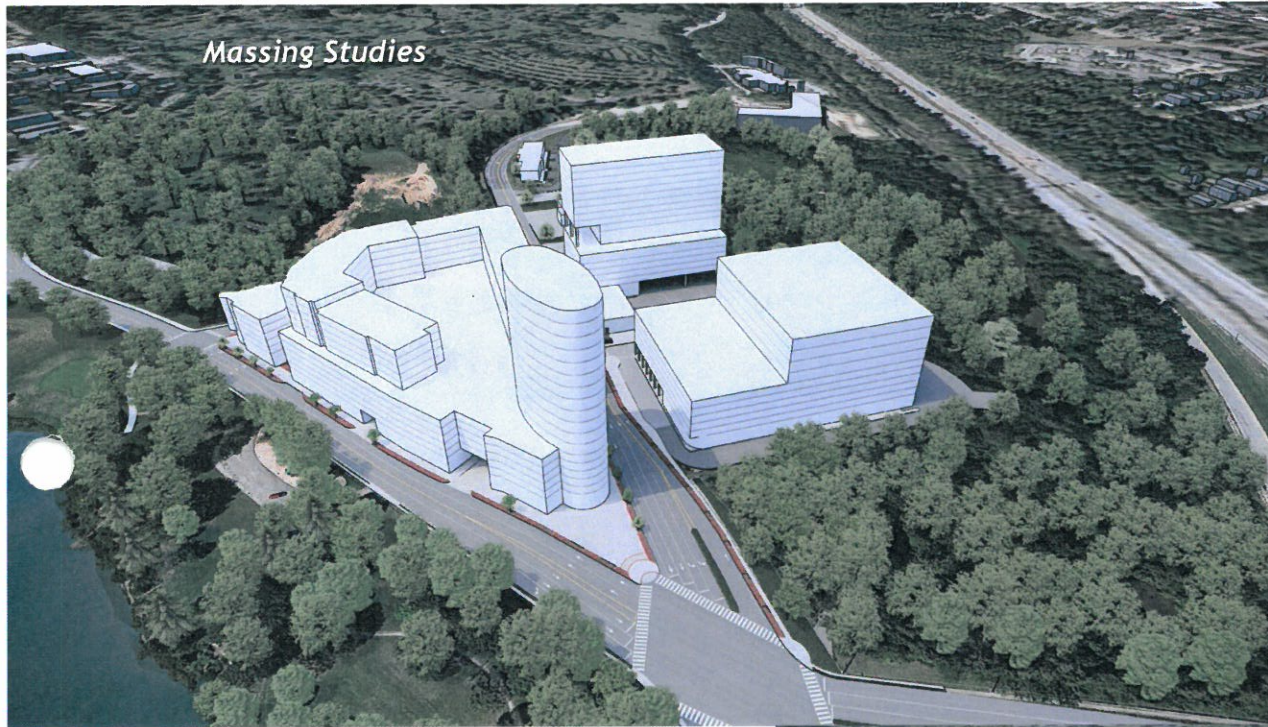
UEMYNOSTE

BEA

Current Condition of Site



Massing Studies



Resulting One Park - South and One Park - North Relationships and Designs

Kent Gootee to explain PDD plan, including access, circulation, street closure, internal and frontage sidewalks, Lexington Road ROW dedication, bikeways and lane improvements.

WASTEWATER SUBJECT TO FEES. LUTAN SEWER

THE DEVELOPER IN BEARGRASS COORDINATED WITH DESIGN

ELOPED AND NATURAL DOCUMENTATION OF THE PLANNING THE XOD HAZARD AREA

WATER QUALITY AGE AT DESIGN VT PRACTICES. OR MSD'S FATS, OIL,

ED TO THE REAR ECT. AN ACCESS D PRIOR TO MSD

MENT PRIOR TO CO FOR THE

COORDINANCE WITH TO CONSTRUCTION

SEMENT PLAT WILL N APPROVAL

FRONT YARD SETBACK FROM 20' TO 0'

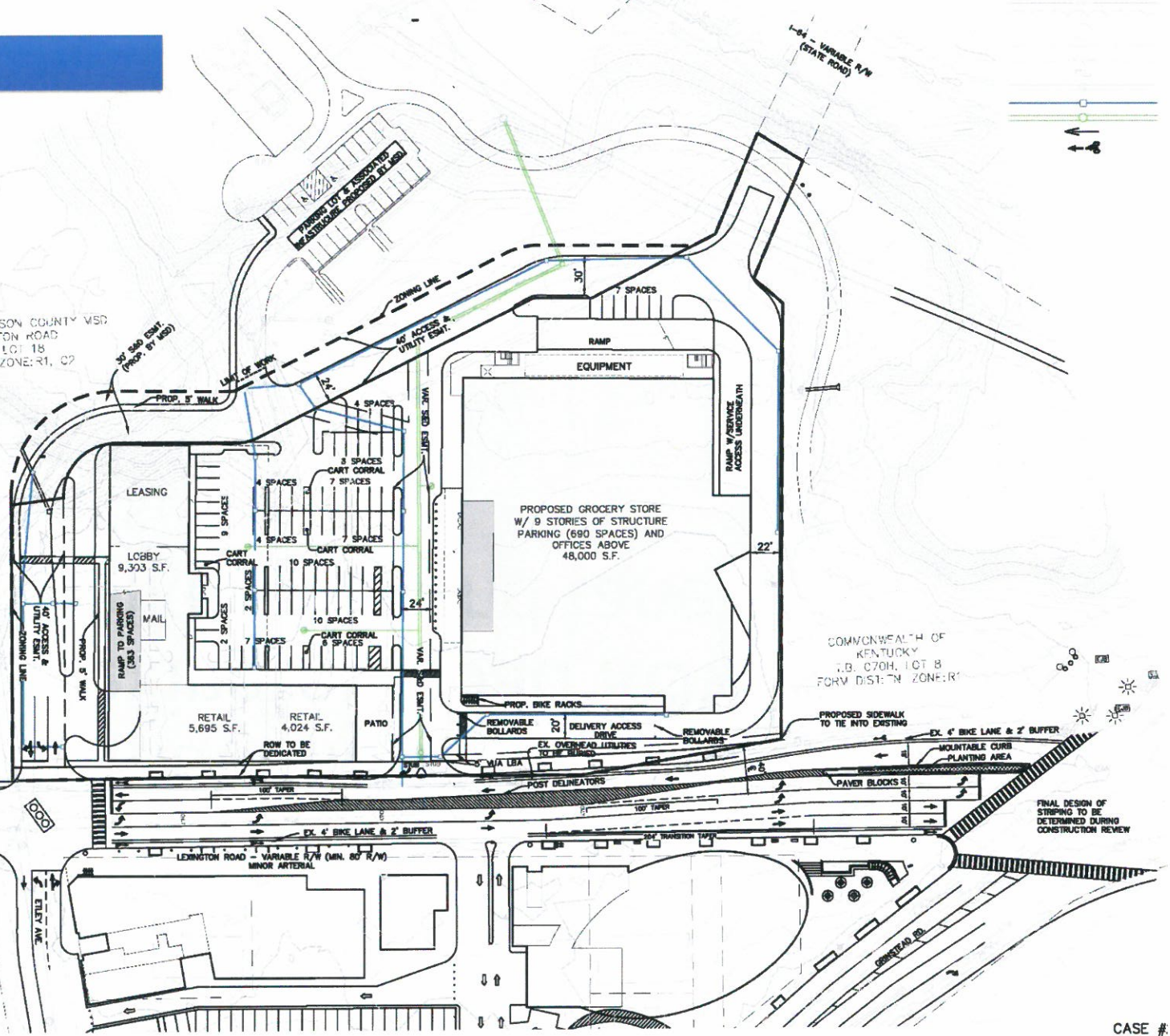
PDD PLAN

CLIVELAND & JEFFERSON COUNTY MSD
2301 LEXINGTON ROAD
T.B. 070J, LOT 18
FORM DISTRICT ZONE: R1, C2

AUGUST MOON RESTAURANT
2269 LEXINGTON RD
T.B. 070J, LOT 9
FORM DISTRICT ZONE: R1/C1

PHILIP WILLS
2295 LEXINGTON RD
T.B. 070J, LOT 22
FORM DISTRICT ZONE: R1/C1

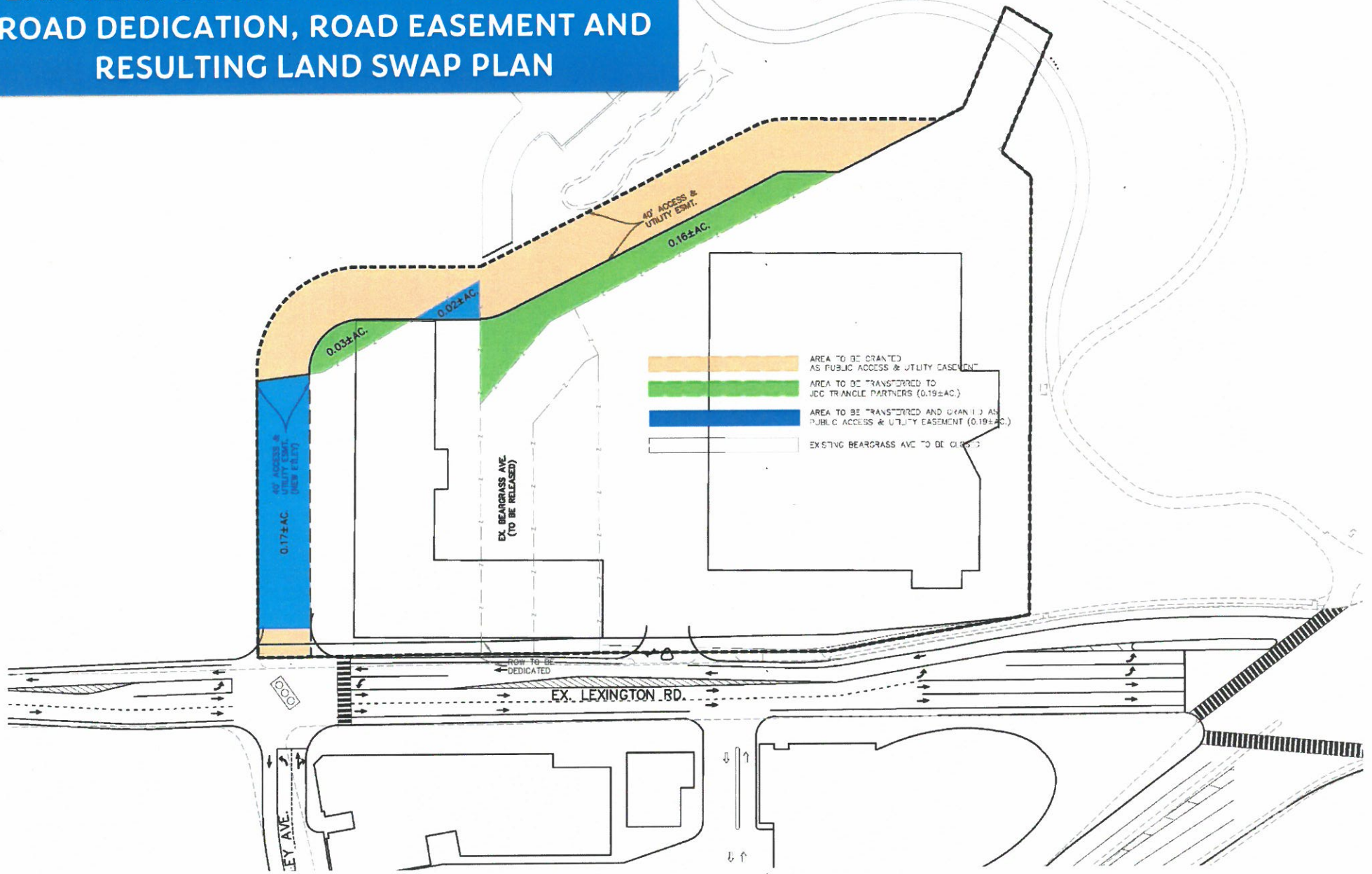
CAVE HILL CEMETERY
701 BAXTER AVE
T.B. 068L, LOT 3
FORM DISTRICT ZONE: R1



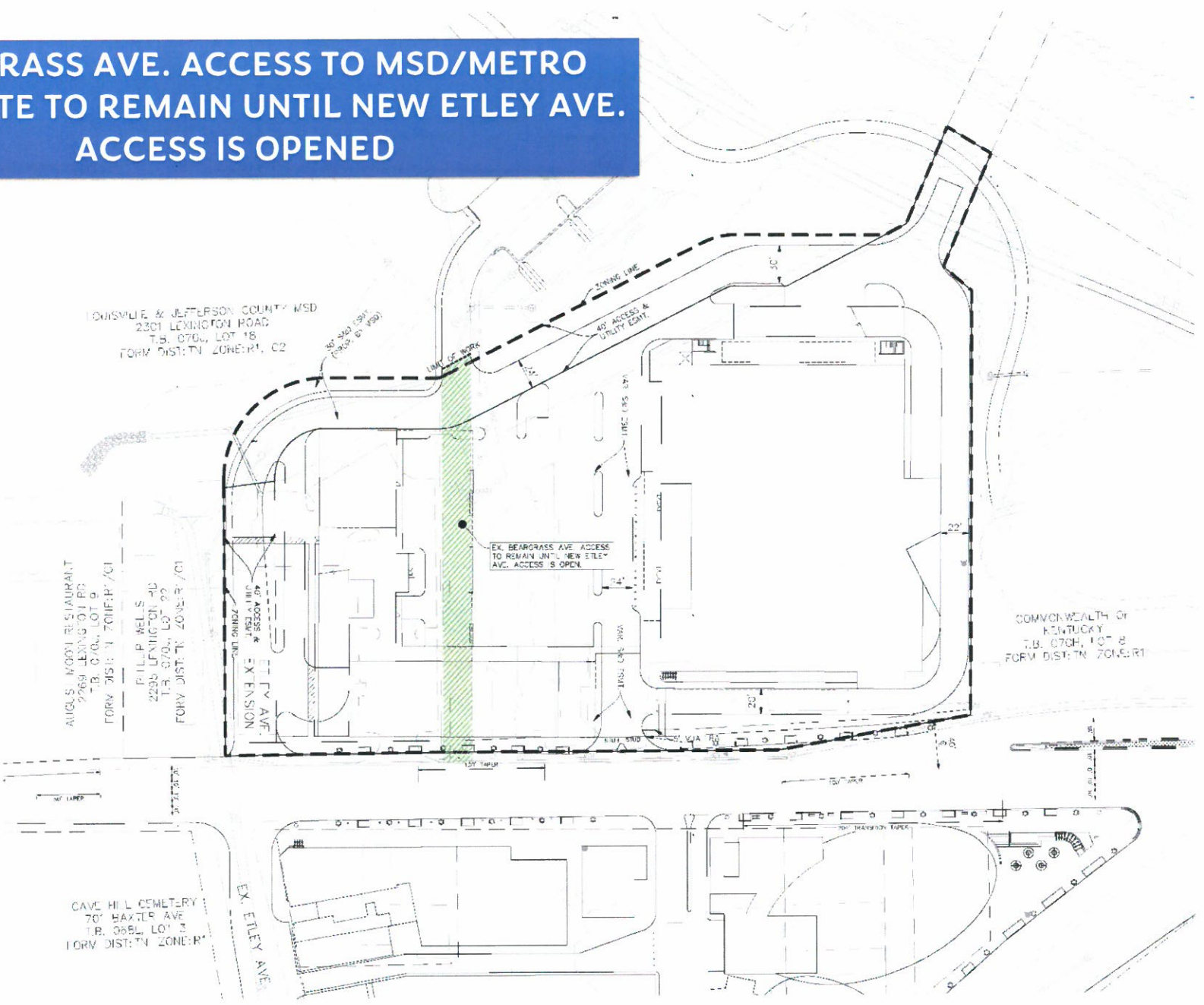
COMMONWEALTH OF KENTUCKY
T.B. 070H, LOT 8
FORM DISTRICT ZONE: R1

FINAL DESIGN OF STRIPING TO BE DETERMINED DURING CONSTRUCTION REVIEW

VEHICULAR CIRCULATION - ROAD CLOSING, ROAD DEDICATION, ROAD EASEMENT AND RESULTING LAND SWAP PLAN



**BEARGRASS AVE. ACCESS TO MSD/METRO
PARKS SITE TO REMAIN UNTIL NEW EITLEY AVE.
ACCESS IS OPENED**



LOUISVILLE & JEFFERSON COUNTY MSD
2301 LEXINGTON ROAD
T.B. 0700, LOT 18
FORM DIST: TN ZONE: R1, C2

AUGUS MOON RESTAURANT
2266 LEXINGTON RD
T.B. 0700, LOT 9
FORM DIST: TN ZONE: R1, C1

PILIP BELS
2230 LEXINGTON RD
T.B. 0700, LOT 22
FORM DIST: TN ZONE: R1, C1

EX. BEARGRASS AVE. ACCESS
TO REMAIN UNTIL NEW EITLEY
AVE. ACCESS IS OPENED

COMMONWEALTH OF
KENTUCKY
T.B. 0700, LOT 8
FORM DIST: TN ZONE: R1

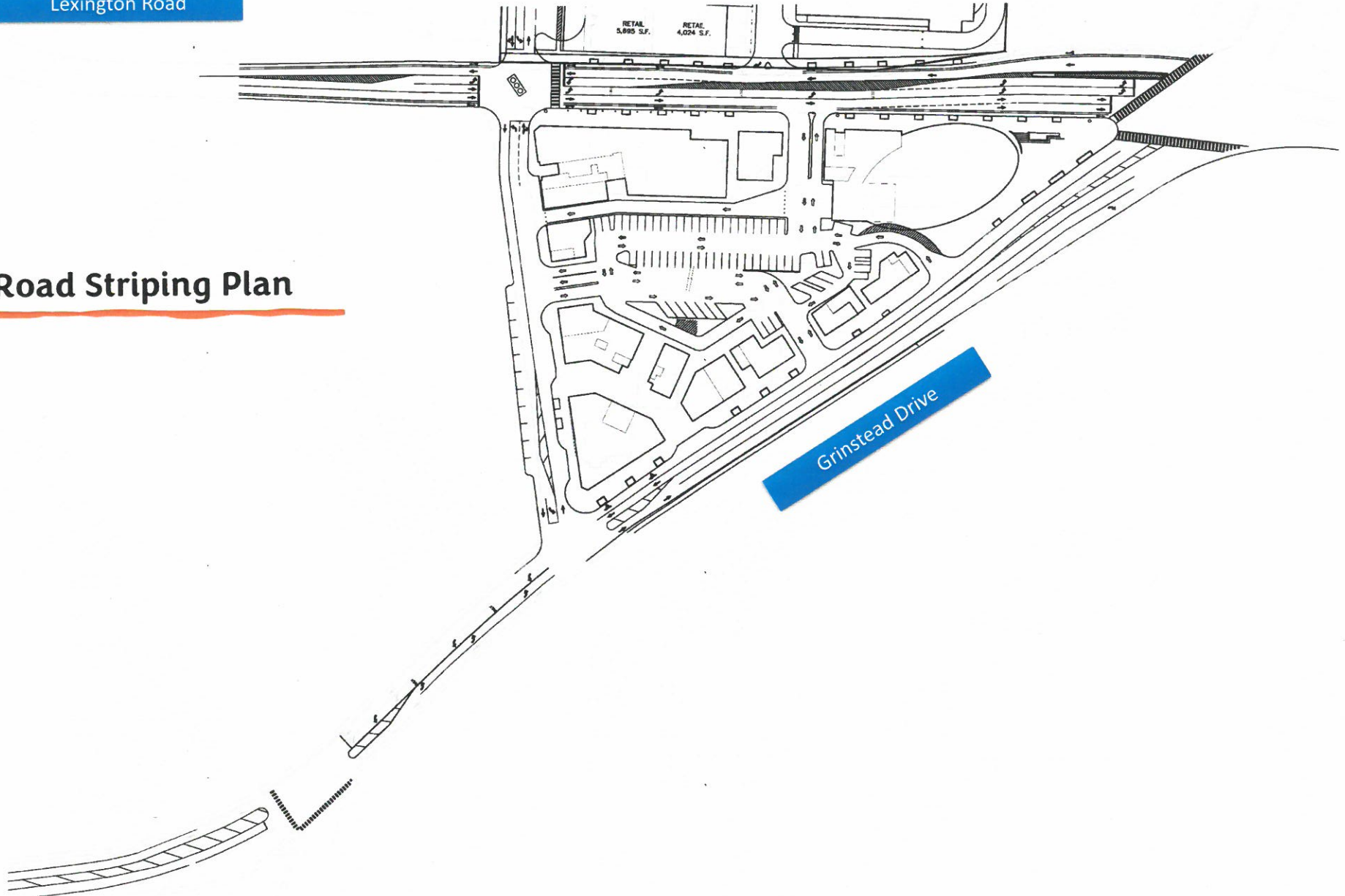
CAVE HILL CEMETERY
701 BAXTER AVE
T.B. 0650, LOT 3
FORM DIST: TN ZONE: R1

EX. EITLEY AVE.

Lexington Road

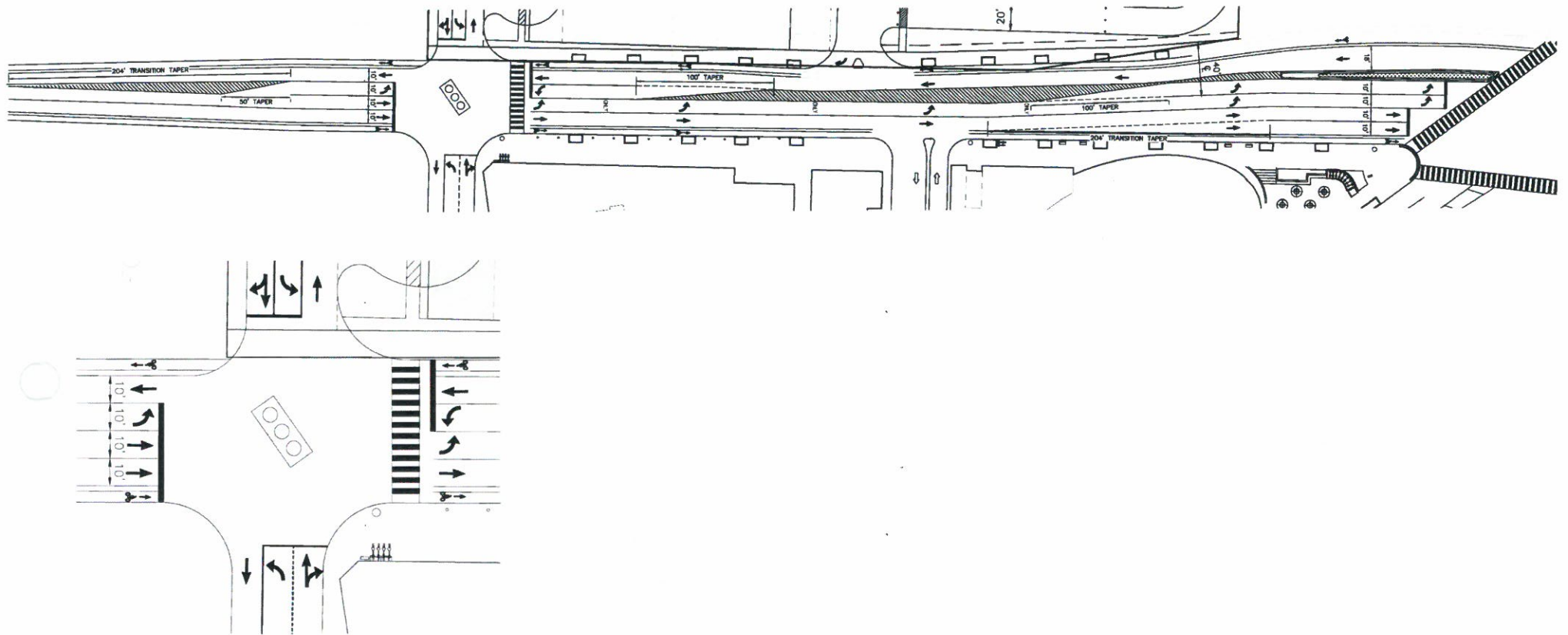
Road Striping Plan

Grinstead Drive



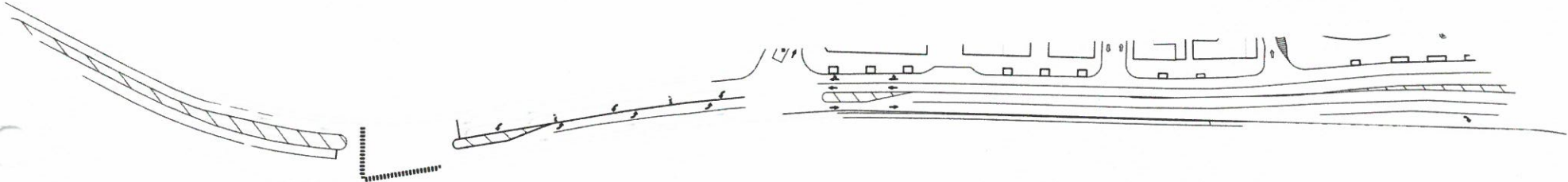
Road Striping Plan

Lexington Road



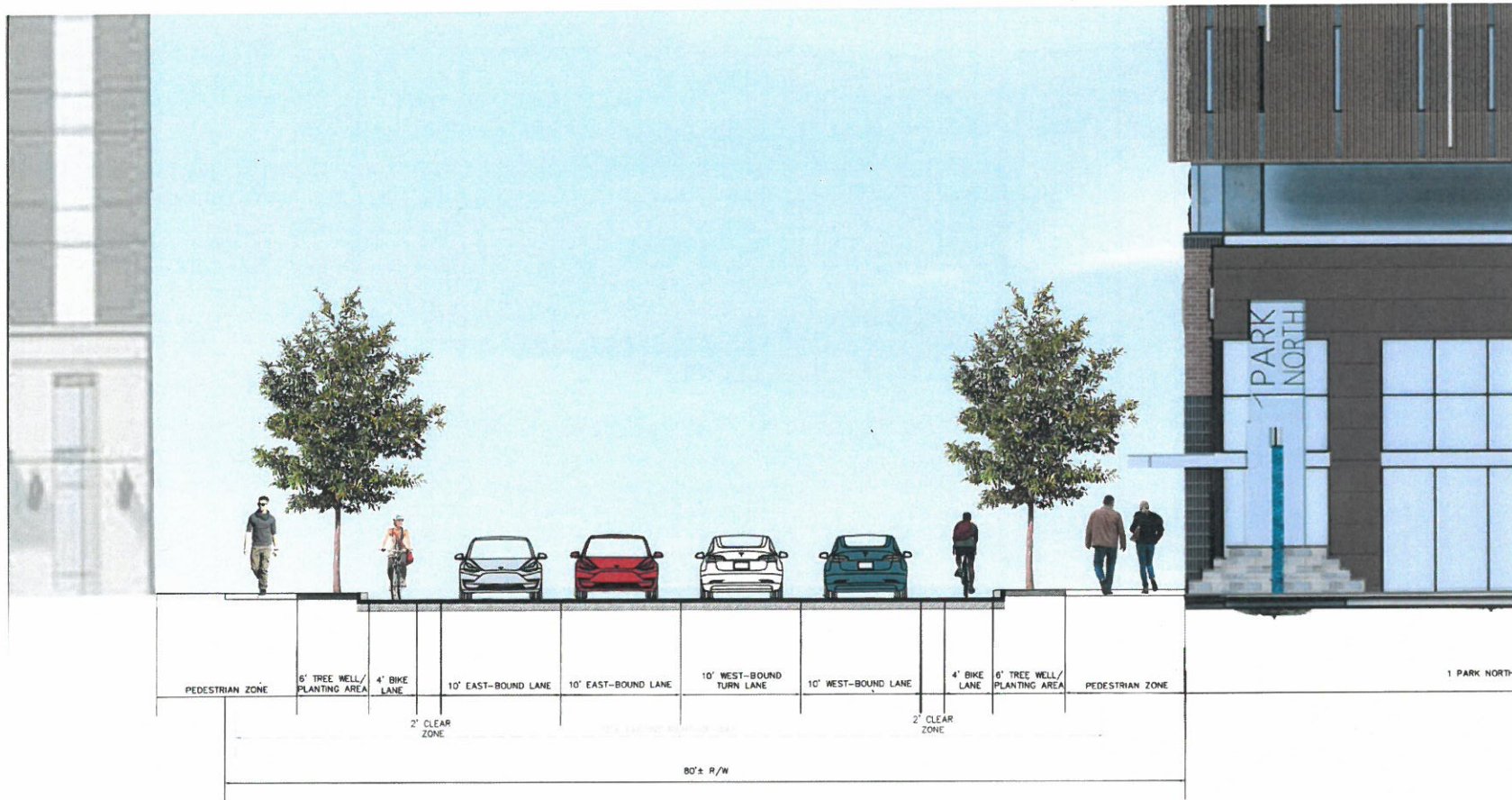
Road Striping Plan

Grinstead Drive





EAST LEXINGTON ROAD CROSS-SECTION, INCLUDING BICYCLE CIRCULATION

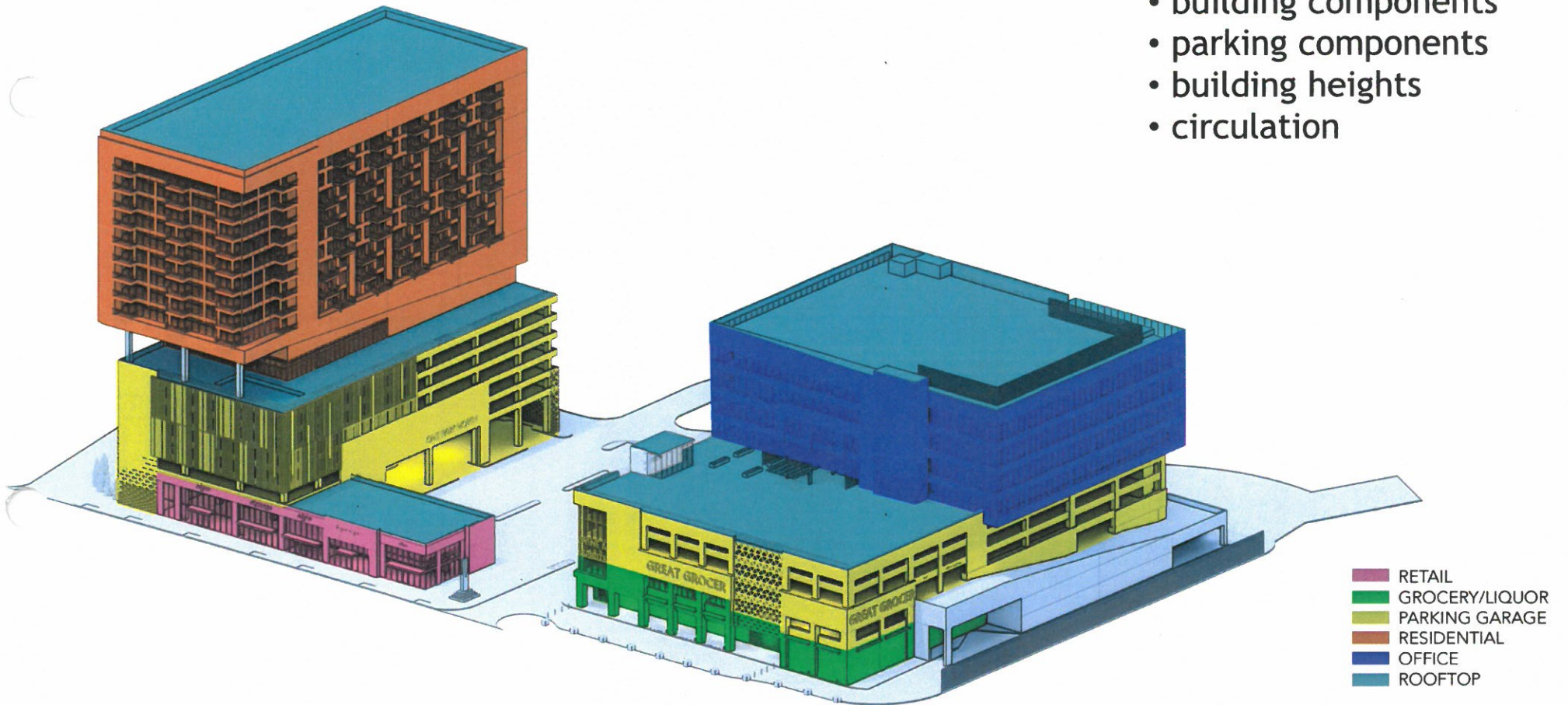


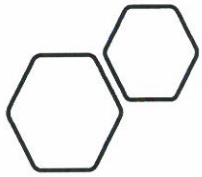
WEST LEXINGTON ROAD CROSS-SECTION, INCLUDING PEDESTRIAN CIRCULATION

Rob Donhoff to explain building
design issues

DESIGN VISION

- use components
- building components
- parking components
- building heights
- circulation

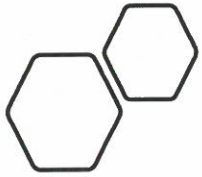




DEVELOPMENT VISION

- building relationships
- building materials
- building elements





BUILDING DESIGN AND MATERIALS

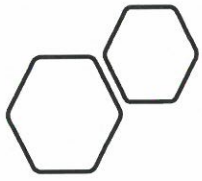
Building materials may consist of stone, brick, metal, glass, precast concrete and cast stone.

ONE PARK - North will have:

- Building materials that are recycled and recyclable
- Eco-friendly lumber
- Extensive green roof design (3-6" depth)
- Intensive green roof design (6" depth or more)
- High-performance HVAC system
- High-quality indoor air quality
- Porous pavers for infiltrating storm water
- Solar panels as balcony shades (viewable from lower levels)
- Solar panels on rooftops not used as common areas
- Tree wells that take in storm water
- Windows that absorb less heat





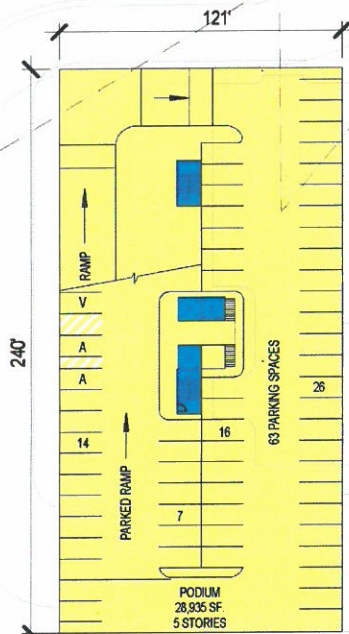


COMMON AREA AND EVENT SPACE



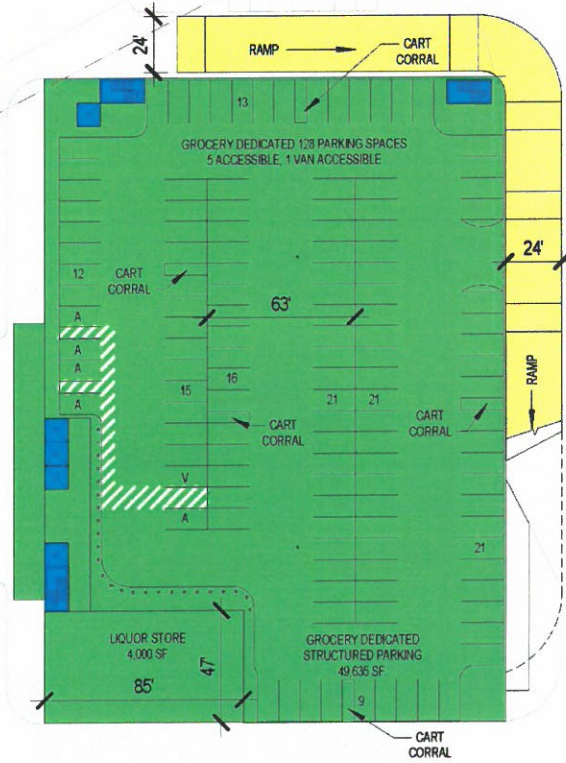


Site Plan Level 2

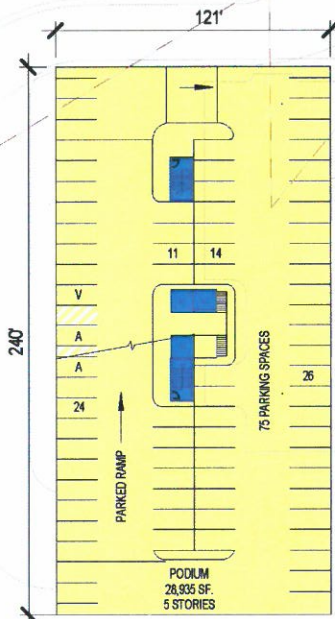


ONE LEVEL RETAIL
4,624 SF

PATIO 1,769 SF

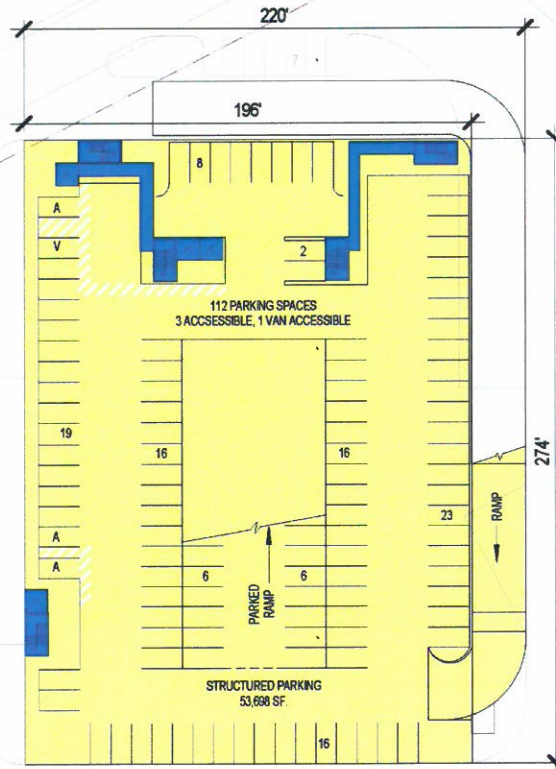


Site Plan Level 3

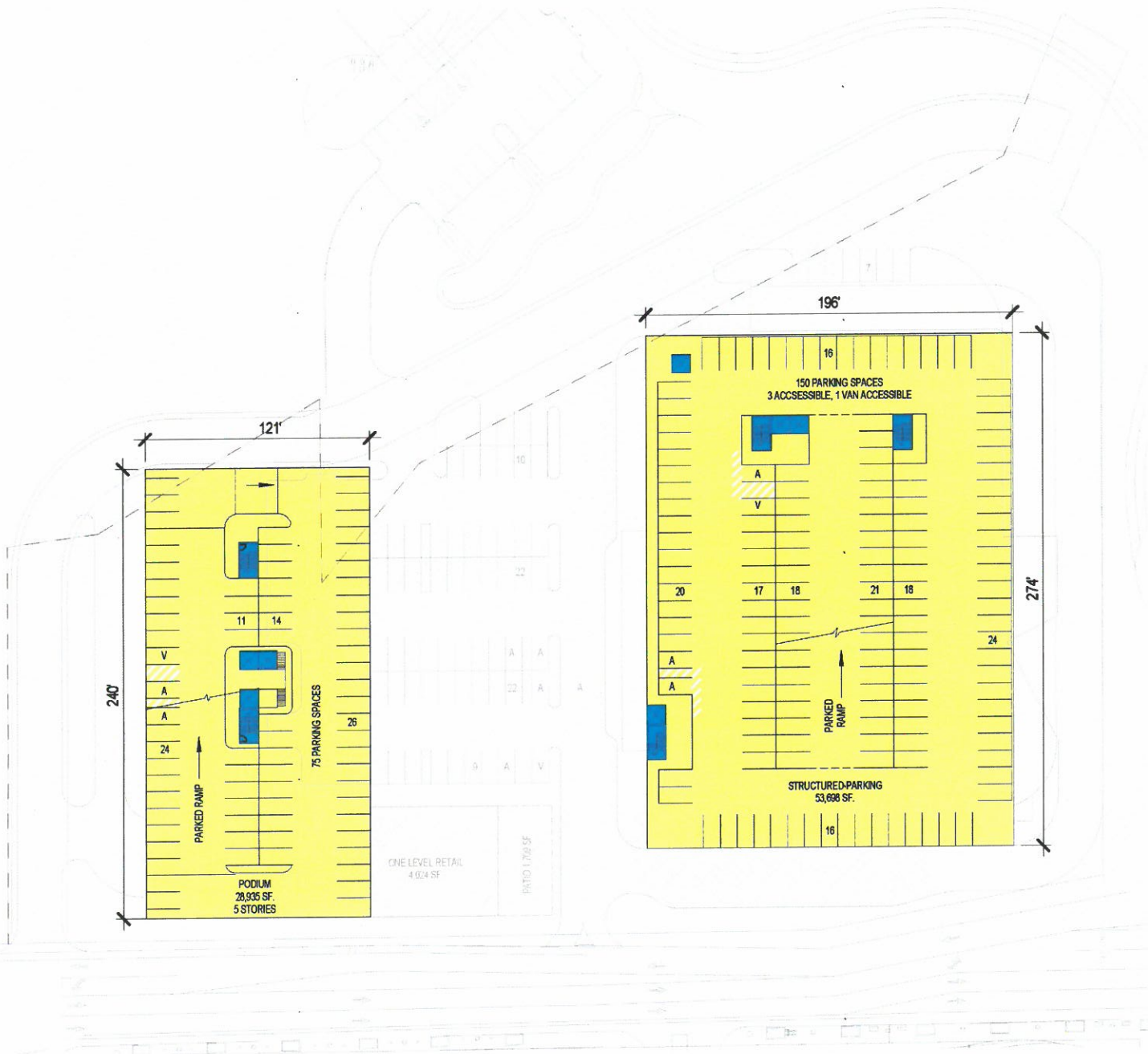


ONE LEVEL RETAIL
4,024 SF

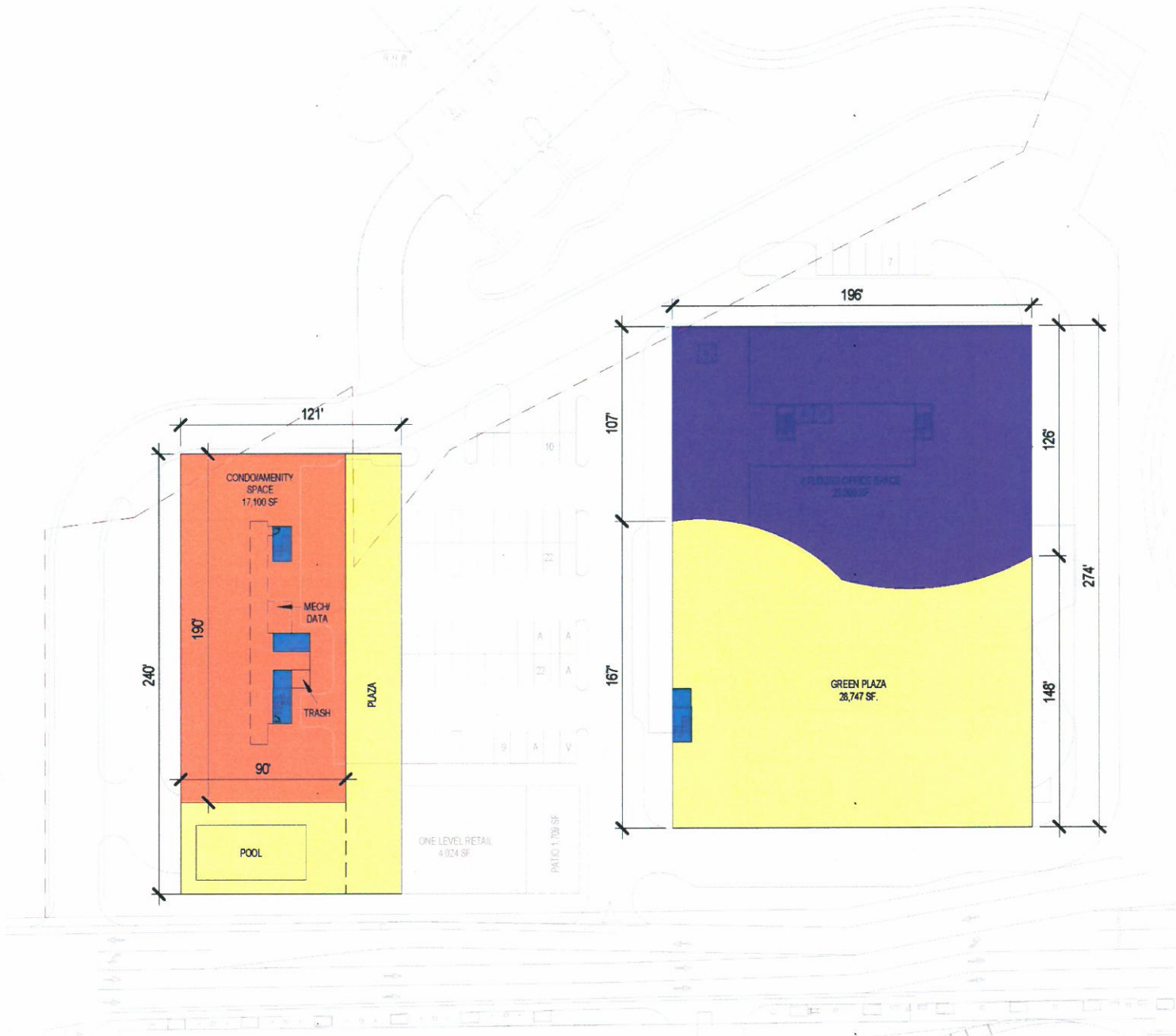
PARKING 1,719 SF



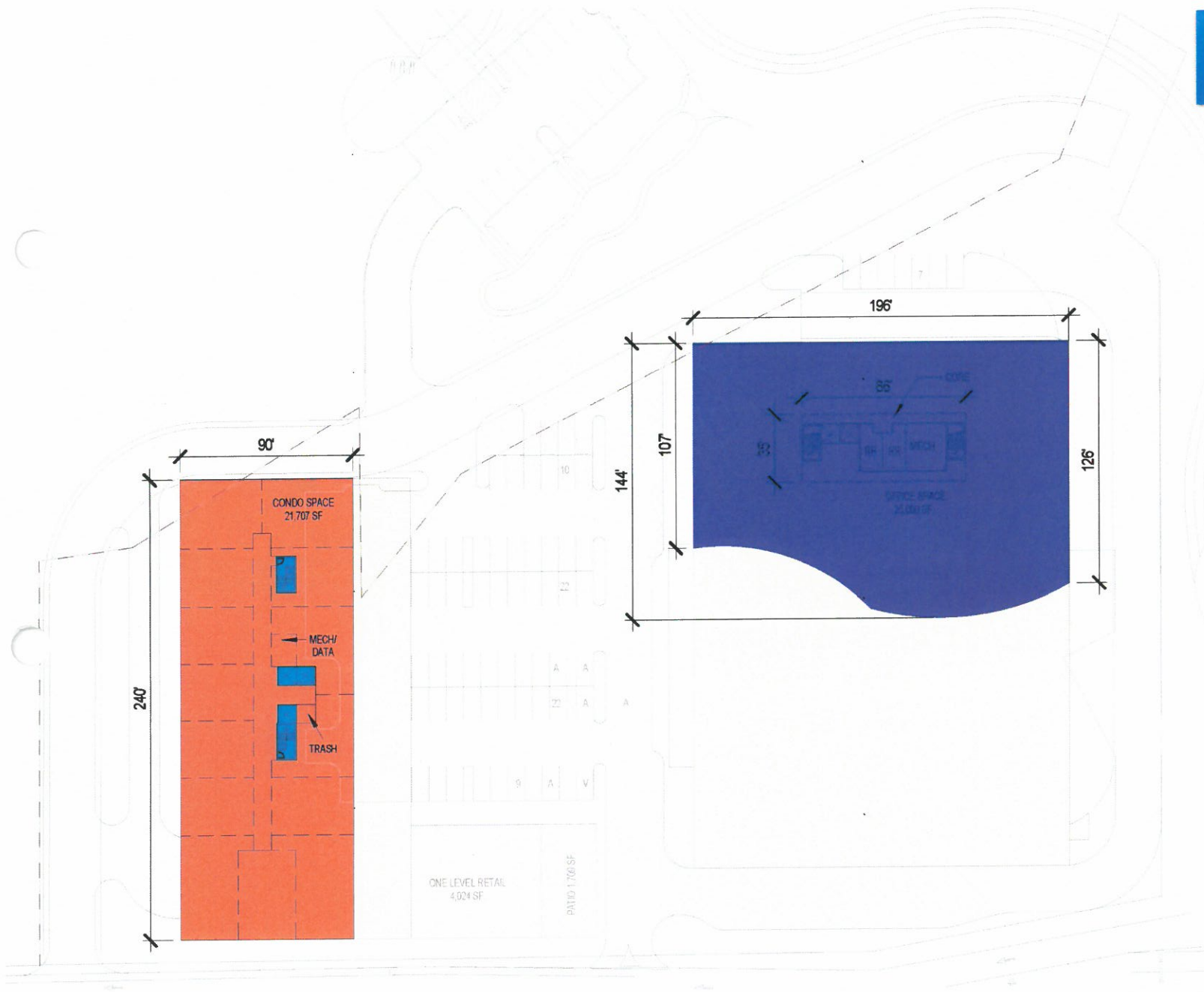
Site Plan
Levels 4-6



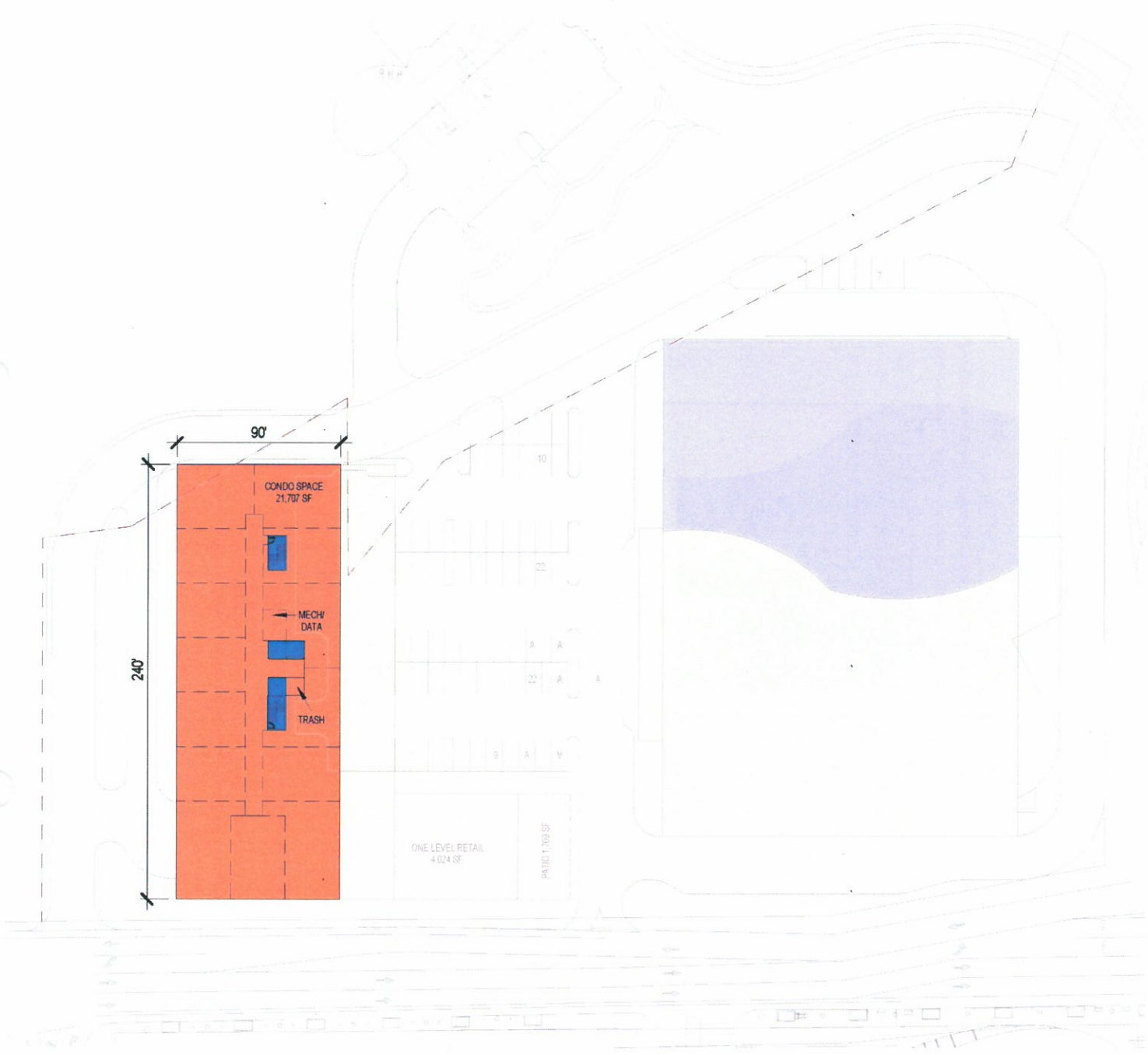
Site Plan Level 7



Site Plan
Levels 8-10



Site Plan
Level 11-17



Bill Bardenwerper to explain other parts of the PDD pattern book.

STREETSCAPE AMENITIES

Include the following elements:

- Bike racks - Bike storage (short-term)
- Bike fix-it station(s)
- Benches
- Water feature
- Bollards with lighting
- Building Information Kiosks
- Café seating and tables
- Canvas canopies/awnings
- Drinking fountains (with dog bowl)
- LED lighting features and electrical connections for smart devices
- Neighborhood identity banners
- Outdoor power station for mobile devices
- Planter boxes/pots
- Streetlights
- Trash Receptacles
- Tree wells to take in stormwater
- Tree well guards
- Wi-Fi availability

As a part of active street life, outdoor dining is allowed along building frontages and in the sidewalk right-of-way per City Ordinance.



STREET PLANTINGS



TREES ALONG LEXINGTON

- London Planetree - *Platanus x acerifolia*
- Thornless Honey Locust – *Gleditsia tricanthos var. inermis*
- American Elm – *Ulmus americana* 'Princeton'
- Littleleaf Linden - *Tilia cordata*
- Scarlet Oak – *Quercus coccinea*



SHRUBS

- Boxwood - *Buxus* 'Green Velvet' or 'Wintergreen'
- Sky Pencil Japanese Holly – *Ilex crenata* 'Sky Pencil'
- Juniper - *Juniperus chinensis* 'Torulosa' or 'Kaizuka Variegata' or 'Nick's Compact' or 'Pfitzeriana Compacta'
- Youngstown Andorra Juniper - *Juniperus horizontalis* 'Youngstown'
- Dwarf Japanese Garden Juniper – *Juniperus procumbens* 'Nana'
- Rainbow Leucothoe - *Leucothoe fontanesiana* 'Girard's Rainbow'
- Flirt Heavenly Bamboo - *Nandina domestica* 'Murasaki'
- Arborvitae - *Thuja occidentalis* 'Sunkist' or 'Rheingold' or 'Degroot's Spire'

GRASSES AND PERENNIALS

- Blue Festuca - *Festuca glauca* 'Elijah Blue'
- Wild Geranium - *Geranium maculatum*
- Lenten Rose - *Heleborus orientalis*
- Monkey grass - *Liriope muscari* 'Big Blue' or 'Majestic' or 'Variegata'
- Green Carpet Japanese Spurge - *Pachysandra terminalis* 'Green Carpet'
- Burgundy Bunny Dwarf Fountain Grass— *Pennisetum alopecuroides* 'Burgundy Bunny'
- Dwarf Fountain Grass - *Pennisetum alopecuroides* 'Hameln'
- Little Bunny Dwarf Fountain Grass— *Pennisetum alopecuroides* 'Little Bunny'
- Celandine Poppy - *Stylophorum diphyllum*

ANNUALS

- Impatiens
- Pansy - *Viola* spp.
- Petunias
- Purple Kale
- Sweet Potato Vine - *Ipomoea batatas* or 'Midnight Lace' or 'Sweet Caroline Sweetheart Red'

PERMITTED LAND USES

The following uses shall be permitted in ONE PARK – North's Planned Development District (PDD). The category titles correspond to the PDD Use Plan.

Residential Uses:

- Apartments and condominiums
- Assisted Living
- Extended Stay Lodging
- Home Occupations
- Live/Work Units
- Short Term Rentals

Offices:

- General
- Professional
- Medical

Retail:

- Antique/Boutique
- Apparel
- Art Gallery
- Artist Studio
- Bars and Restaurants with live music with outdoor sales and consumption of alcoholic beverages
- Banking / Financial
- Barber/Beauty
- Bike Sales and Service
- Books
- Coffee/Café
- Dance Instruction
- Day Care
- Dry Cleaners
- Fitness /Athletic
- Florist
- Grocery store with liquor sales
- Hair Salon
- Interior Design/Decorating
- Jewelry
- Micro-brewery and micro-distillery
- Package Liquor
- Pharmacy
- Photocopying / Duplicating
- Photography
- Sporting Goods
- Tailor
- Veterinarian

LIMITED USES

Cell Antennas shall be limited in location to the top of the tower.

Prohibited Uses

Everything not mentioned



Hotel:

- Hotel, including ancillary restaurants, bars, shopping space, and conference/event / meeting space

Rooftop Uses:

- Green Space and Pools
- Event Space
- Restaurant Outdoor Dining
- Solar Panels
- Screening
- Mechanical Equipment and Elevators



● SIGNS & BUILDING LIGHTING

○ Diane Zimmerman to explain
Traffic Impact Study (TIS).

final report

August 1, 2022

Traffic Impact Study

One Park North
Lexington Road at Grinstead Drive
Louisville, KY

Prepared for

Louisville Metro Planning Commission
Kentucky Transportation Cabinet



DIANE B. ZIMMERMAN
Traffic Engineering, LLC

12803 High Meadows Pike
Hopwood, KY 40347
502.248.1858
dianeasm@att.net



TRIP GENERATION

The Institute of Transportation Engineers Trip Generation Manual, 11th Edition contains trip generation rates for a wide range of developments. The results of the trip generation analysis are shown in **Table 1**. The internal capture and pass-by trip procedures outlined in the Trip Generation Handbook, 3rd Edition were applied. The new trips were assigned to the highway network with the percentages shown in **Figure 6**. The pass-by trips were assigned using the existing peak hour distribution. **Figures 7 and 8** show the trips generated by this development and distributed throughout the road network for the year 2026 during the peak hours. The pass-by trips are shown in parenthesis.

Figure 9 and 10 display the individual turning movements for the year 2026 for the peak hours when the development is completed.

Table 1. Peak Hour Trips Generated by Proposed Site
AM Peak Hour

Land use	ITE Code	Intensity	Total Trips			Internal Trips				External Trips			Pass-by Trips		New Trips		
			In	Out	Total	In	Out	Total	%	In	Out	Total	%	Volume	In	Out	Total
Office	710	100,000 sf	147	20	167	7	6	13	7.8%	140	14	154	0%	0	140	14	154
Grocery	850	52,000 sf	88	61	149	7	6	13	8.7%	81	55	136	0%	0	81	55	136
Strip Retail	822	9,719 sf	17	11	28	0	0	0	0.0%	17	11	28	0%	0	17	11	28
Multi-Family (4-10)	221	205 units	18	61	79	0	2	2	2.5%	18	59	77	0%	0	18	59	77
Total			270	153	423	14	14	28	6.6%	256	139	395	0.0%	0	256	139	395

PM Peak Hour

Land use	ITE Code	Intensity	Total Trips			Internal Trips				External Trips			Pass-by Trips		New Trips		
			In	Out	Total	In	Out	Total	%	In	Out	Total	%	Volume	In	Out	Total
Office	710	100,000 sf	28	138	166	6	23	29	17.5%	22	115	137	0%	0	22	115	137
Grocery	850	52,000 sf	228	227	455	34	28	62	13.6%	194	199	393	24%	94	147	151	299
Strip Retail	822	9,719 sf	38	38	76	0	0	0	0.0%	38	38	76	0%	0	38	38	76
Multi-Family (4-10)	221	205 units	49	31	80	25	14	39	48.8%	24	17	41	0%	0	24	17	41
Total			343	434	777	65	65	130	16.7%	278	369	647	14.6%	94	231	321	553

One Park North
Lexington Road at Grinstead Drive
Traffic Impact Study

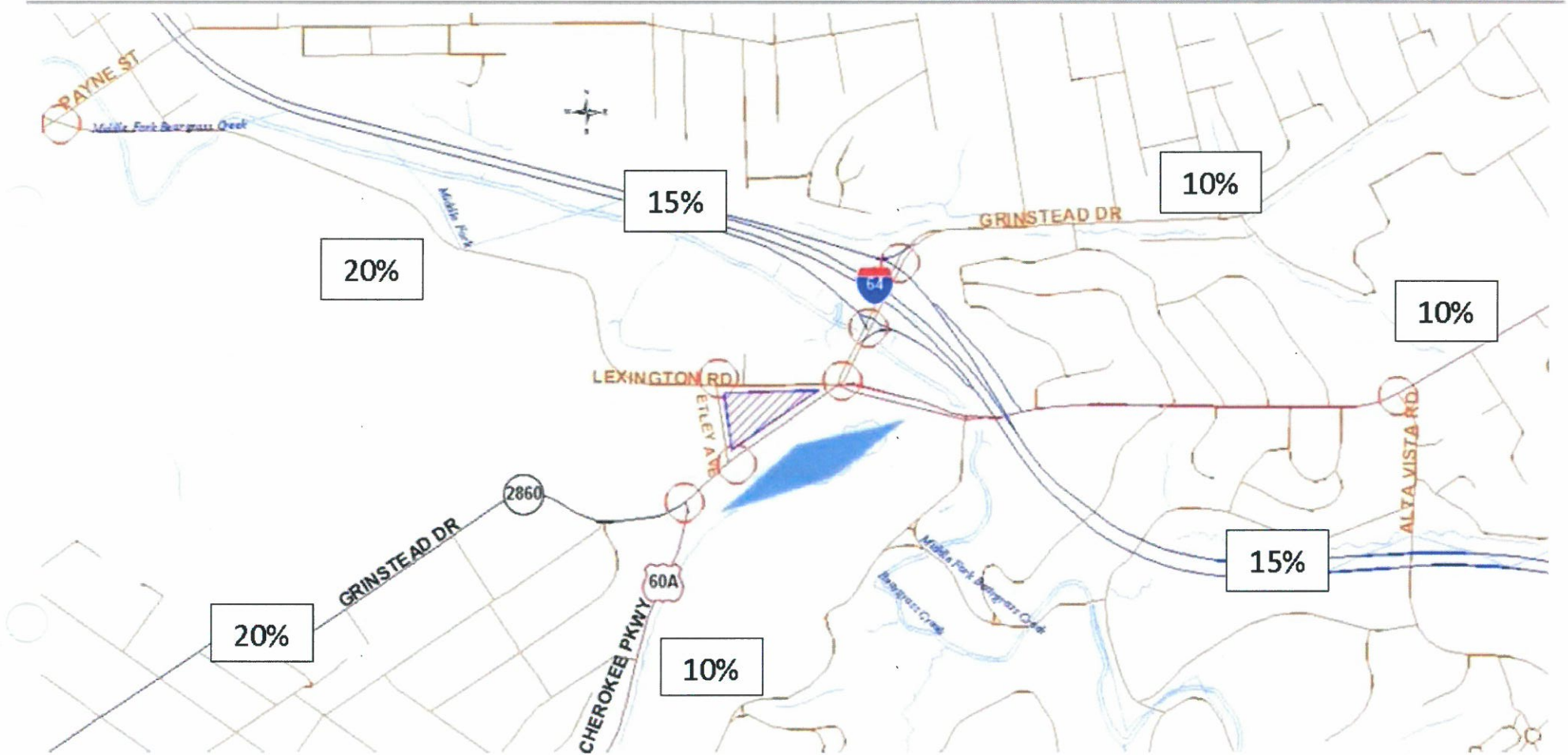


Figure 6. Trip Distribution Percentages

ANALYSIS

The qualitative measure of operation for a roadway facility or intersection is evaluated by assigning a "Level of Service". Level of Service is a ranking scale from A through F, "A" is the best operating condition and "F" is the worst. Level of Service results depend upon the facility that is analyzed. In this case, the Level of Service is based upon the total delay experienced at an intersection.

To evaluate the impact of the proposed development, the vehicle delays at the intersections were determined using procedures detailed in the Highway Capacity Manual, 6th edition. Future Level of Service and delays were determined for the intersections using Synchro (version 11.1.2.9) traffic analysis software. The Level of Service and seconds of delay and are summarized in Table 2.

Table 2. Peak Hour Level of Service

Approach	A.M.			P.M.		
	2022 Existing	2026 No Build	2026 Build	2022 Existing	2026 No Build	2026 Build
Grinstead Drive at I 64 Westbound	C 31.0	D 41.6	D 50.3	C 32.0	C 30.9	C 31.7
I 64 ramp Westbound	C 33.0	D 48.7	E 61.1	D 40.4	D 36.7	D 36.3
Grinstead Drive Northbound	C 27.6	D 35.3	D 44.3	B 10.8	B 13.1	B 16.5
Grinstead Drive Southbound	C 29.8	C 32.0	C 32.8	D 35.5	D 38.6	D 41.9
Grinstead Drive at I 64 Eastbound	A 5.0	A 4.9	A 7.0	A 4.9	A 6.7	A 5.5
I 64 ramp Eastbound	D 49.7	D 49.3	D 49.3	F 80.8	E 75.5	E 75.5
Grinstead Drive Northbound	A 6.9	A 7.2	A 7.2	A 0.1	A 4.7	A 4.8
Grinstead Drive Southbound	A 0.9	A 0.9	A 3.9	A 0.5	A 0.6	A 0.6
Grinstead Drive at Lexington Road	C 27.8	D 38.1	D 45.1	D 51.2	D 38.0	D 45.7
Lexington Road Eastbound	D 38.1	D 43.2	E 65.3	E 60.0	E 59.0	E 62.7
Lexington Road Westbound	C 30.8	C 32.9	D 37.0	E 73.1	E 71.0	E 76.0
Grinstead Drive Northbound	C 29.4	D 43.2	D 40.8	C 26.1	C 31.6	D 39.1
Grinstead Drive Southbound	C 23.9	C 34.5	D 47.2	E 61.4	B 12.3	C 27.9

One Park North
Lexington Road at Grinstead Drive
Traffic Impact Study

Approach	A.M.			P.M.		
	2022 Existing	2026 No Build	2026 Build	2022 Existing	2026 No Build	2026 Build
Grinstead Drive at Etley Avenue						
Etley Avenue Eastbound	D 27.2	C 17.3	C 18.9	B 13.1	C 20.3	D 27.5
Grinstead Drive Northbound (left)	B 11.4	C 15.3	F 79.2	A 9.2	B 12.8	B 14.2
Grinstead Drive at Cherokee Parkway	C 25.8	C 25.1	C 26.2	B 11.6	B 13.1	B 14.0
Cherokee Parkway Westbound	E 77.5	E 72.5	E 75.1	C 29.8	C 33.6	D 36.5
Grinstead Drive Northbound	B 10.3	B 14.8	B 16.8	A 6.8	B 10.3	B 12.2
Grinstead Drive Southbound (left)	B 11.5	A 8.7	A 7.9	B 13.2	B 13.0	B 12.7
Lexington Road at Payne Street	B 15.7	B 16.6	B 16.2	B 17.0	B 16.2	B 16.1
Lexington Road Eastbound	A 7.7	A 9.6	A 9.3	B 11.9	A 9.1	A 9.6
Lexington Road Westbound	A 7.4	A 9.7	A 9.7	A 9.1	A 7.8	A 8.3
Payne Street Northbound	C 28.2	C 25.5	C 26.5	C 28.1	C 27.4	C 27.7
Payne Street Southbound	C 31.1	C 29.5	C 29.8	C 30.4	C 29.6	C 29.7
Lexington Road at Etley Avenue			B 11.7			A 9.4
Lexington Road Eastbound (left)			A 4.9			A 8.7
Lexington Road Westbound (left)	A 0	A 7.8	A 6.1	A 9.2	A 9.4	A 8.4
Etley Avenue Northbound	B 13.7	B 13.9	C 26.4	C 23.0	C 16.2	B 10.2
Etley Avenue Southbound			C 26.9			B 11.8
Lexington Road at Alta Vista Drive	A 8.1	A 8.5	A 8.8	A 9.2	B 10.1	A 10.7
Lexington Road Eastbound	A 5.9	A 6.3	A 6.5	A 9.2	B 10.6	B 11.6
Lexington Road Westbound	A 7.0	A 7.7	A 8.1	A 7.1	A 7.7	A 8.1
Alta Vista Drive Northbound	B 18.8	B 18.9	B 19.0	B 18.8	B 18.5	B 18.5

One Park North
 Lexington Road at Grinstead Drive
 Traffic Impact Study

Approach	A.M.			P.M.		
	2022 Existing	2026 No Build	2026 Build	2022 Existing	2026 No Build	2026 Build
Alta Vista Drive Southbound	B 16.6	B 16.6	B 16.6	B 17.3	B 16.8	B 16.8

Key: Level of Service, Delay in seconds per vehicle

Improvements that are included in the results which are required with One Park are dual left turn lanes from Lexington Road in the existing median. At the Etley Avenue intersection with Lexington Road, the northbound approach will have a left and right turn lane. At the Etley Avenue intersection with Grinstead Drive, the southbound approach will have a left and a right turn lane. The intersection of Grinstead Drive at Etley Avenue will require a dedicated left turn lane.

As a result of the One Park North, a traffic signal at the Lexington Road intersection at Etley Avenue will be installed. The exit volume from One Park North do meet the signal warrants. The detailed hourly exit volumes are shown in the appendix (page 26). Left turn lanes on Lexington Road will be provided at the intersection with Etley Avenue.

PEDESTRIANS

The development will be surrounded by eight-foot sidewalks. Crosswalks adjacent to the site will be striped with the ladder style, which improve visibility of the crosswalk to drivers.

CONCLUSIONS

Based upon the volume of traffic generated by the development and the amount of traffic forecasted for the year 2026, there will be an impact to the existing highway network. To mitigate the impacts the following improvements will be completed with the development – a traffic signal at the intersection of Etley Avenue at Lexington Road, with left turn lanes on Lexington Road.

Bill Bardenwerper to summarize
the application and present
proposed Findings of Fact.

**PD-DEVELOPMENT PLAN
PATTERN BOOK**

DEVELOPED BY:
JDG TRIANGLE PARTNERS, LLC

Case Number #15ZONEIG44
September 2019

ONE PARK

PIAZZA

JEFFERSON
DEVELOPMENT
GROUP

FOOTWEAR

CAFE



Louisville Metro Planning Commission Public Hearing - December 1, 2022
Louisville Metro Land Development & Transportation Committee - October 13, 2022 and October 27, 2022
Neighborhood Meeting/Charrettes - September 27, 28, and 29, 2021, October 12, 2021, March 16, 2022

ONE PARK NORTH

Docket No. 22-ZONE-0043 &
22-STRClosure-0017

Zone Change from R-1, R-6, C-1
and C-2 to PDD (Planned
Development District) with a
Waiver and a Road Closure of
Beargrass Avenue

2297, 2301, 2313, 2345
Lexington Road

Developed by:

JDG Triangle Partners, LLC

Attorney: Bardenwerper Talbott & Roberts, PLLC

Land Planner, Landscape Architects & Engineers:

Mindel Scott & Associates

Architects: DNK

Traffic Engineer: Diane B. Zimmerman

Traffic Engineering, LLC

