

ZONING DESCRIPTION
R-4 to OR-3
CHAMBERLAIN WOODS OFFICE PARK
5220 Chamberlain Lane
8804 & 8720 Wolf Pen Branch Road

Beginning at the point of intersection of the west right of way line of Chamberlain Lane and the south right of way line of Wolf Pen Branch Road, thence with the west right of way line of Chamberlain Lane, South 17°08'47" East, 64.35 feet to a point, thence North 72°51'13" East, 11.03 feet to a point, thence South 16°25'00" East, 43.47 feet to a point, thence South 01°19'44" East, 151.95 feet to a point, thence South 16°04'42" East, 52.20 feet to the true point of beginning, thence continuing with the west right-of-way line of Chamberlain Lane South 16°04'42" East, 517.73 feet to the point of intersection of said west right of way line with the north right of way line of Interstate 71, thence with north right of way line of Interstate 71 South 76°40'22" West, 205.47 feet to a point, thence South 83°56'42" West, 401.77 feet to a point, thence South 69°20'51" West, 384.75 feet to a point, thence with a curve to the left and having a radius of 7,764.44 feet and a chord bearing South 73°26'16" West, 903.59 feet to a point, thence South 81°13'06" West, 78.59 feet to a point, thence with a curve to the right and having a radius of 3,764.72 feet and a chord bearing South 80°01'34" West, 301.28 feet to a point, thence continuing with said curve having a radius of 3,764.72 and a chord bearing South 85°31'41" West, 421.47 feet to a point, thence South 88°44'13" West, 317.78 feet to a point, thence leaving said north right of way line of Interstate 71, North 61°41'26" East, 2,193.84 feet to a point in the south right of way line of Wolf Pen Branch Road, thence with said right of way, South 09°06'31" East, 15.85 feet to a point, thence North 62°03'53" East, 32.11 feet to a point, thence with a curve to the left with a radius of 269.78 feet and a chord bearing North 73°58'51" East, 98.01 feet to a point, thence North 63°30'54" East, 69.66 feet to a point, thence North 62°03'53" East, 78.56 feet to a point, thence leaving said right-of-way line South 30°33'42" East, 209.16 feet to a point, thence with a curve to the right with a radius of 485.00 feet and a chord bearing North 75°48'31" East, 269.13 feet to a point, thence with a curve to the left with a radius of 594.20' and a chord bearing North 83°46'42" East, 20.75 feet to a point, thence North 73°55'18" East, 17.53 feet to a point, thence with a curve to the left having a radius of 30.00 feet and a chord bearing North 28°55'19" East, 40.43 feet to the true point of beginning and containing 29.81 Acres more or less.

This aforesaid description is for zoning purposes only and is not intended to be used for the transfer or conveyance of real property.



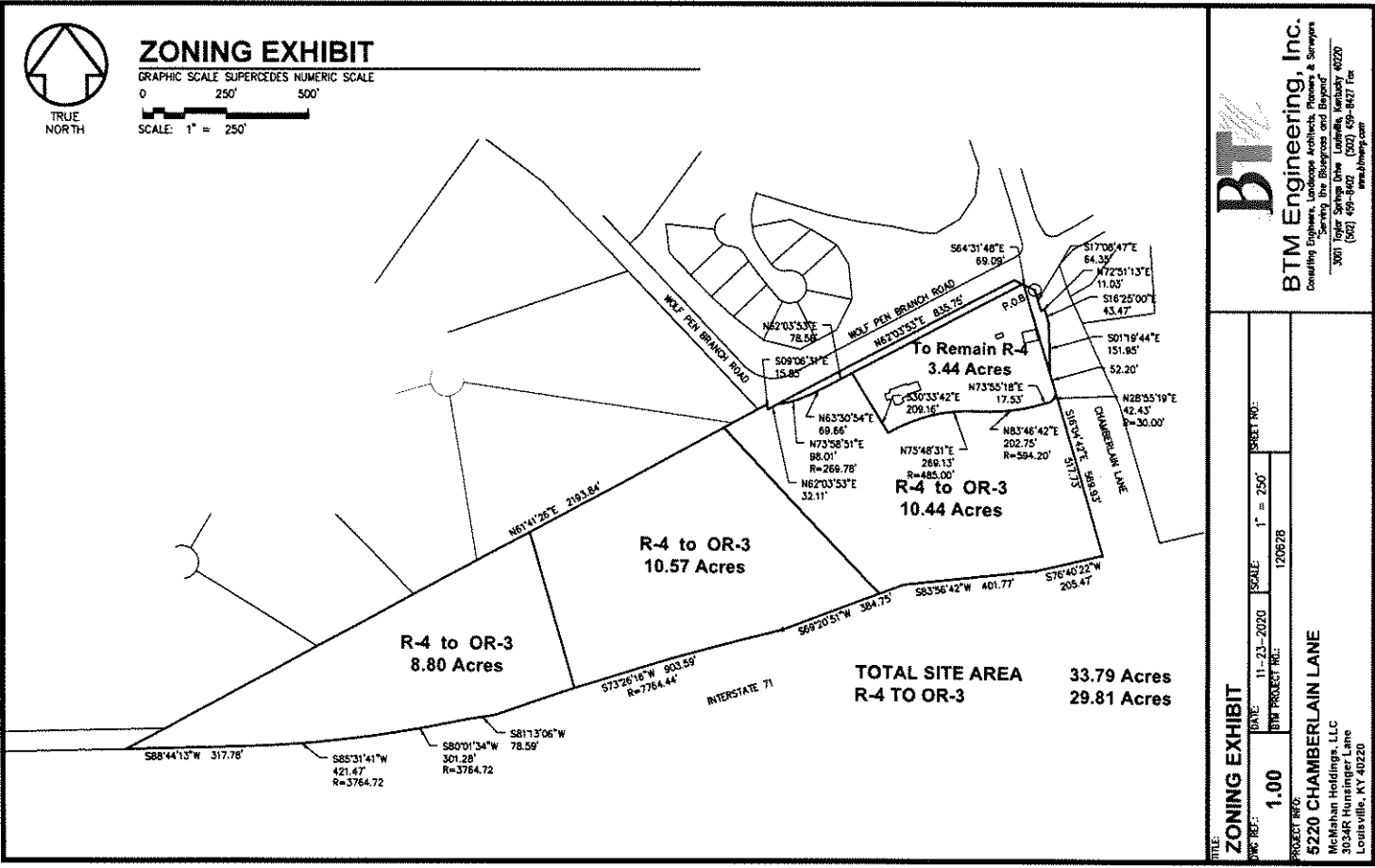
ZONING EXHIBIT

GRAPHIC SCALE SUPERCEDES NUMERIC SCALE

0 250' 500'



SCALE: 1" = 250'



BTM Engineering, Inc.
Consulting Engineers, Landscape Architects, Planners & Surveyors
"Serving the Bluegrass and Beyond"

3081 Taylor Springs Drive
Louisville, Kentucky 40220
(502) 499-4622
www.btmeng.com

TITLE:
ZONING EXHIBIT

DATE: 11-23-2020
BTM PROJECT NO.: 120628

SCALE: 1" = 250'
SHEET NO.: 120628

PROJECT INFO:
5220 CHAMBERLAIN LANE
Nichlan Holdings, LLC
30 Chamberlain Lane
Louisville, KY 40220