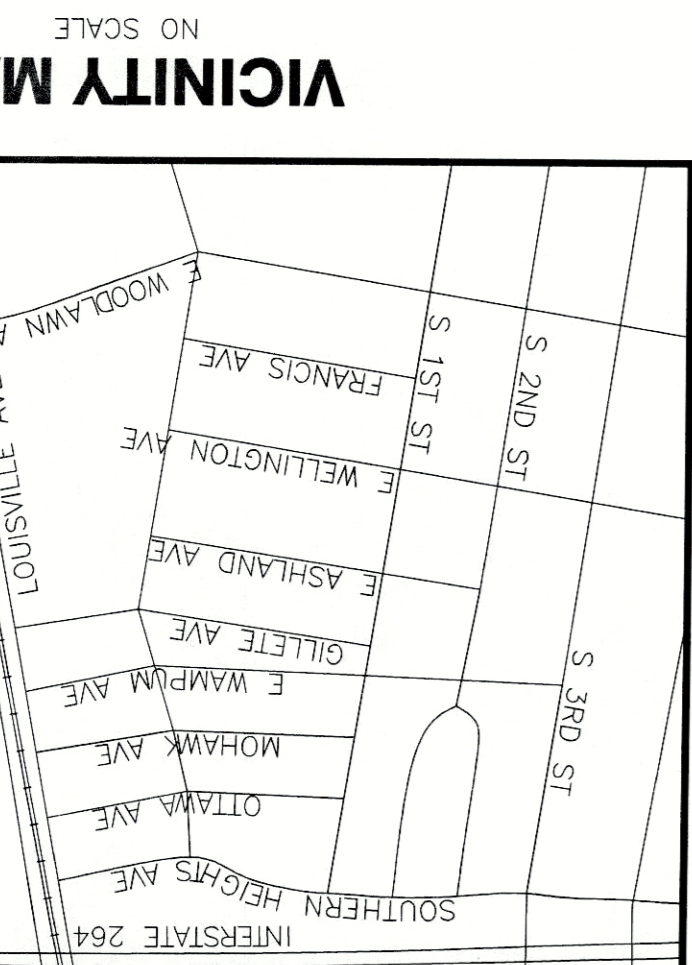
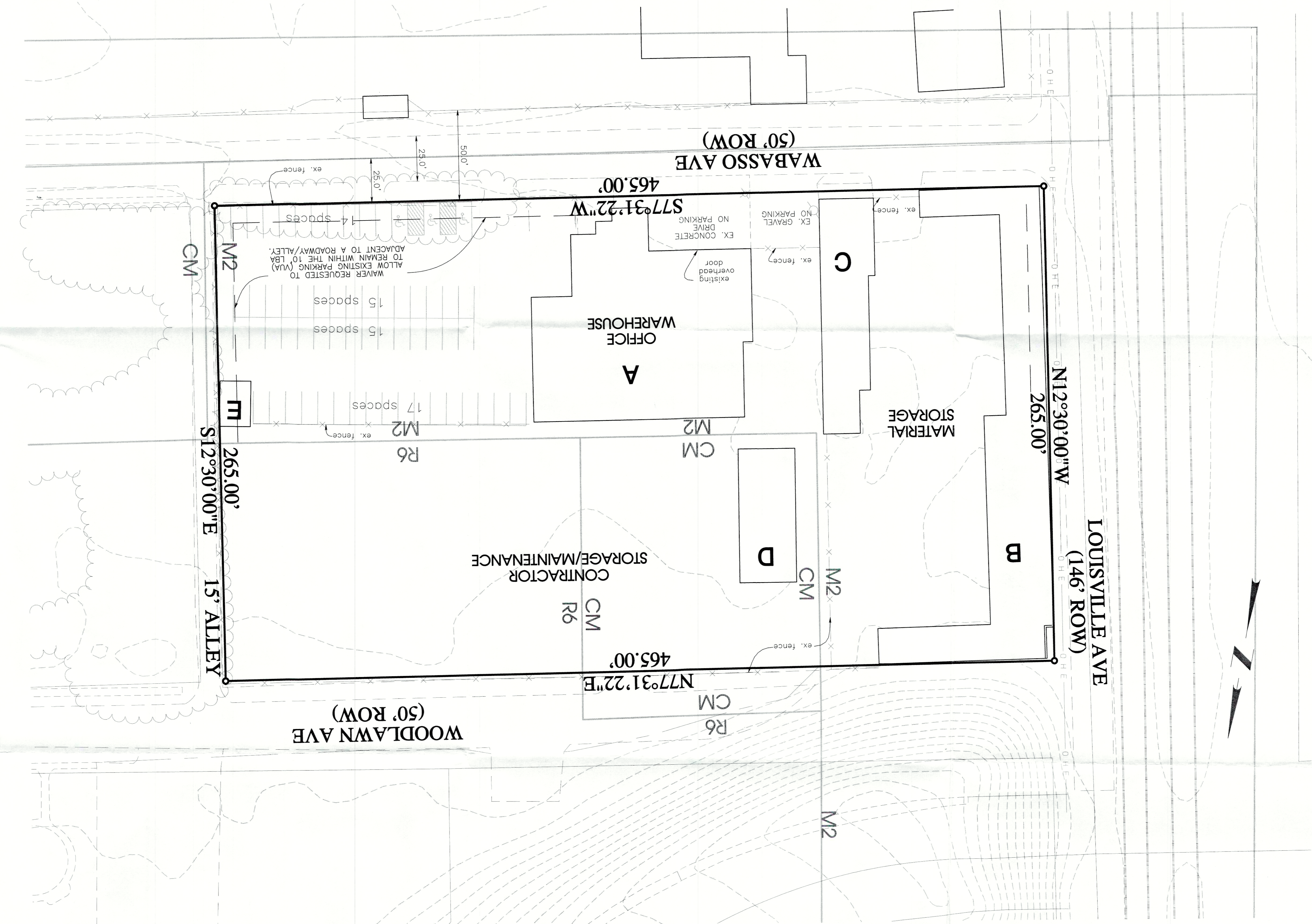


**PRELIMINARY APPROVAL**  
**DEVELOPMENT PLAN**  
 CONDITIONS:  
 BY: *Jason M. Lewis*  
 DATE: 05/13/21  
 LOUISVILLE/JEFFERSON COUNTY  
 METRO PUBLIC WORKS



**Site Development Data**

Location: 317 Wabasso Ave  
 4719 Louisville Ave  
 310 E Woodlawn Ave  
 D.B. 10793 P.G. 423  
 Tax Block, Lot, Sublot: 058K 0001 0002  
 Area: 2.83  
 123,224.99  
 Existing Zoning: M2, CM, R6  
 E21  
 Suburban Workforce  
 Enticement Zone: Office Warehouse, Contractor Storage  
 Proposed Use: Office Warehouse, Contractor Storage

**Building Summary**

Building Area:	A	Office	Warehouse	B	C	D	E	TOTAL
15000 S.F.	12000	3000	10000 S.F.	2400 S.F.	3600 S.F.	500 S.F.	31500 S.F.	

**Dimensional Standards**

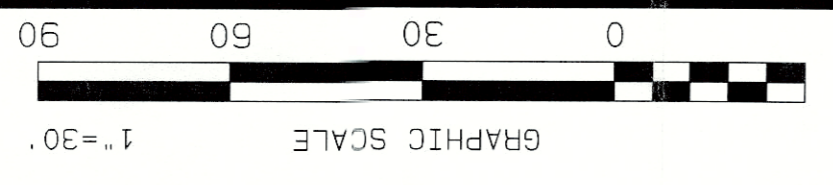
Building Setbacks	Min	Front:	None	Side:	None	Rear:	None
Street Side:	25'	None	None	None	None	None	None

**Parking Summary**

Office	Warehouse	Total Spaces Required	Spaces Provided	Total ADA Spaces
Min 1SP/200 S.F.	1SP/2000SF	50	58	61
Max 1SP/400 S.F.	1SP/500SF	39	99	10

**PRELIMINARY APPROVAL**  
 Condition of Approval:  
 \* No new construction.  
 Development Review Date: 6-16-21  
 Louisville & Jefferson County  
 Metropolitan Sewer District

**RECEIVED**  
 JUN 14 2021  
 PLANNING & DESIGN SERVICES



**REZONING PLAN**

**Arrow Electric Co. Inc.**  
 317 Wabasso Ave  
 Louisville, Kentucky 40209

**Linley Properties LLC**  
 317 Wabasso Ave  
 Louisville, KY 40209

**ACCOUNT:** 2021-574  
**DATE:** 05-26-21  
**DESIGNED BY:** AMR  
**DRAWN BY:** AMR  
**CHECKED BY:** AMR  
**APPROVED BY:** AMR



**AL ENGINEERING INC.**  
 Civil Engineering & Land Development Services  
 13000 Middlebrook Industrial Blvd. Ste A  
 Louisville, KY 40223  
 (502) 817-4444  
 Cell: (502) 817-4444

REVISION	DATE
1	
2	
3	
4	