

The background of the slide features a large, faint, circular seal of Sevier County, Tennessee. The seal contains the text "SEVIER COUNTY TENNESSEE" around the perimeter and "1778" in two locations. In the center of the seal is a fleur-de-lis with a star above it.

# Planning & Design Services (PDS) 2022 Annual Report

Planning & Zoning Committee  
February 21, 2023

Emily Liu, FAICP  
Director of Planning and Design Services

# PLANNING & DESIGN SERVICES

*The Mission of PDS is to oversee land use planning and design services in directing economic growth and physical development in a manner as to ensure the prosperity, health, safety, and general welfare of the community.*



## **What Does Planning & Design Services Do?**

PDS is responsible for administering the policies, programs and regulations that guide Metro's development.

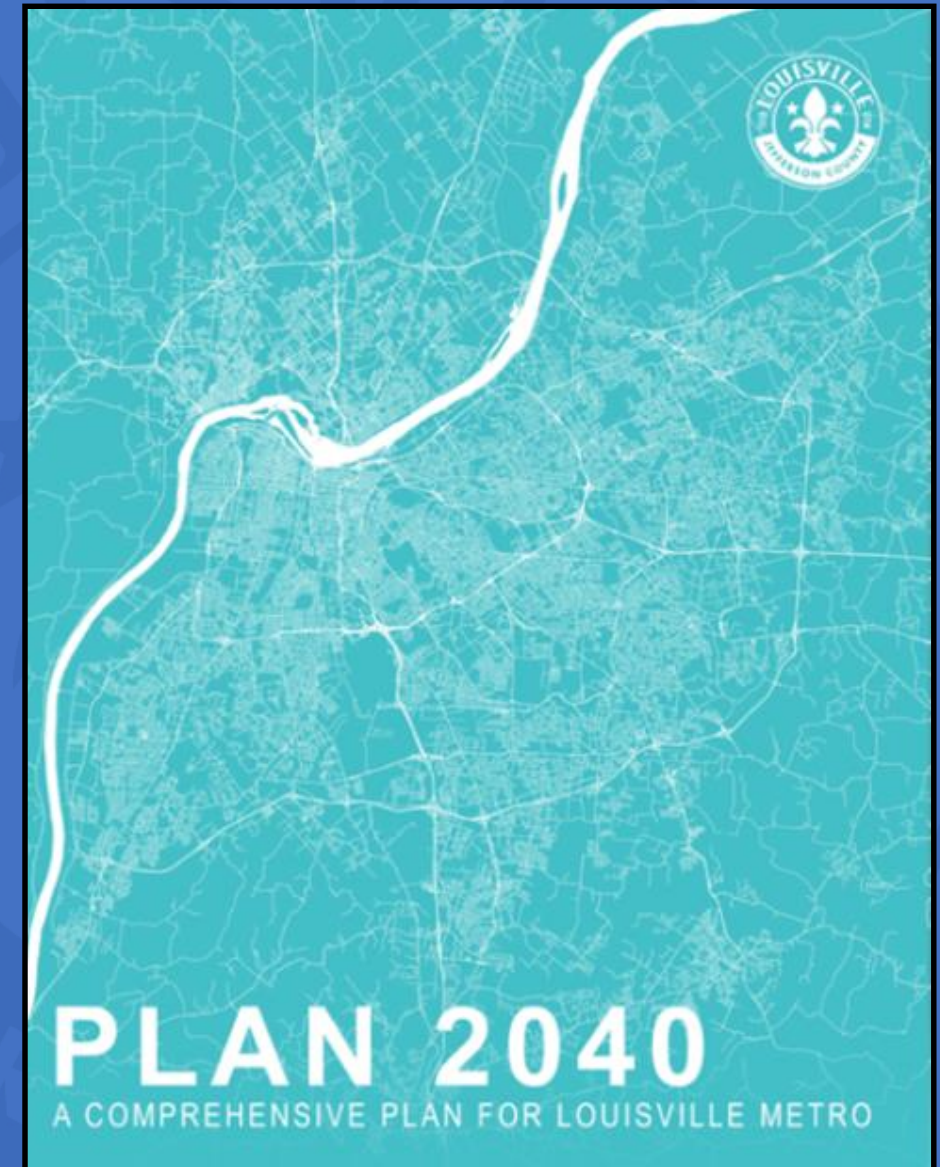
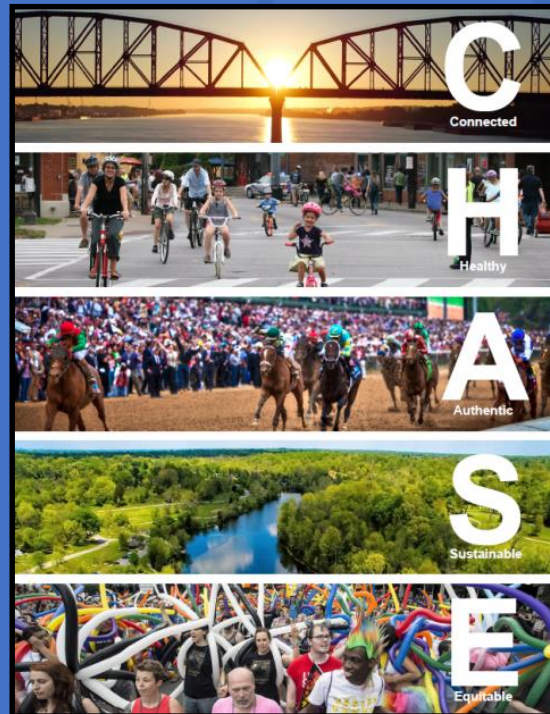
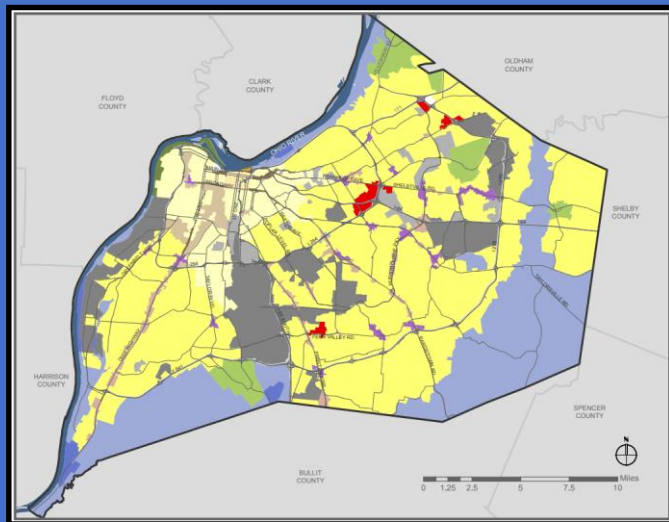
# COMPREHENSIVE PLAN

## Vision Statement:

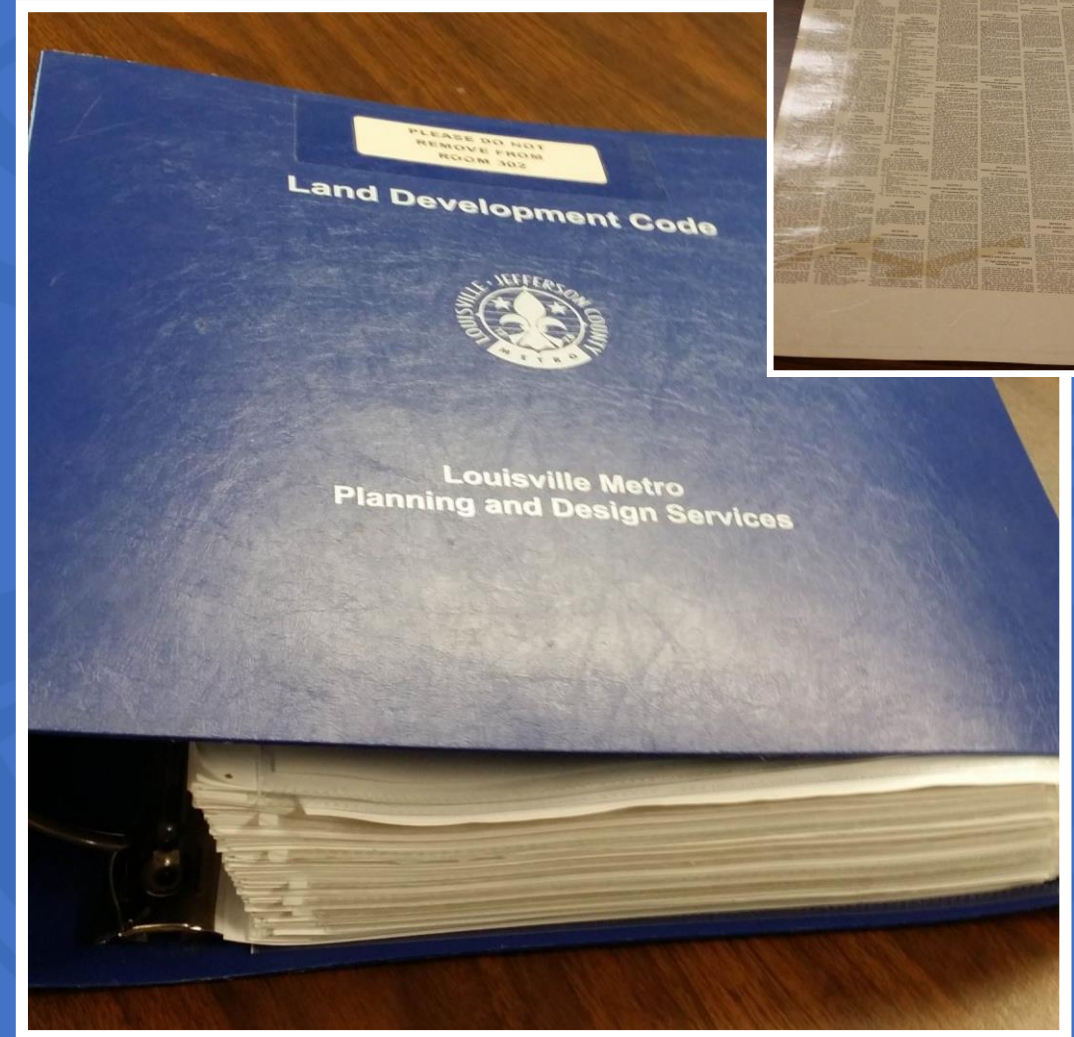
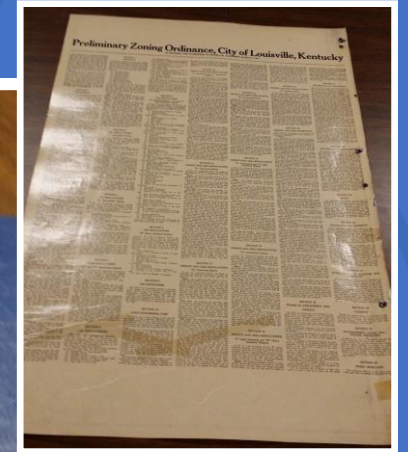
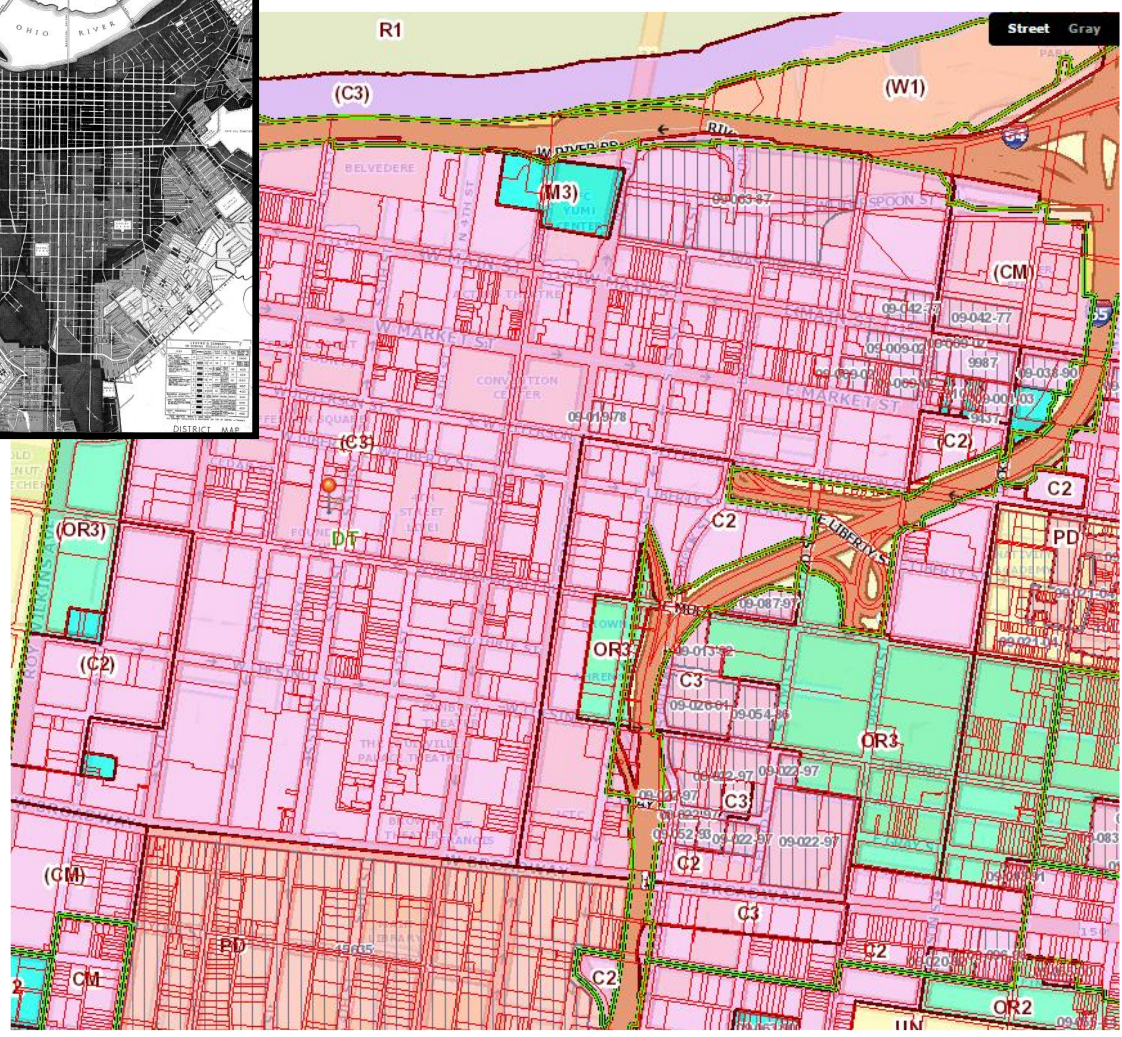
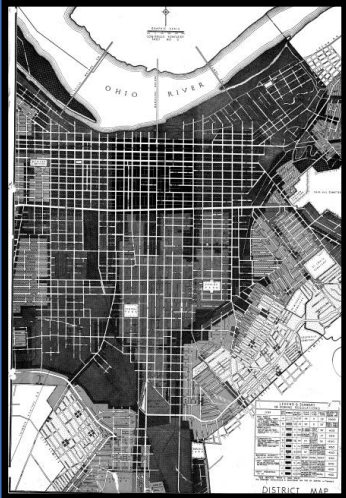
*In 2040, Louisville Metro is a vibrant and diverse community that is connected, healthy, authentic, sustainable and equitable, with compassionate citizens and memorable places among its greatest assets and where all people are able to achieve their full potential.*

## Effective Date:

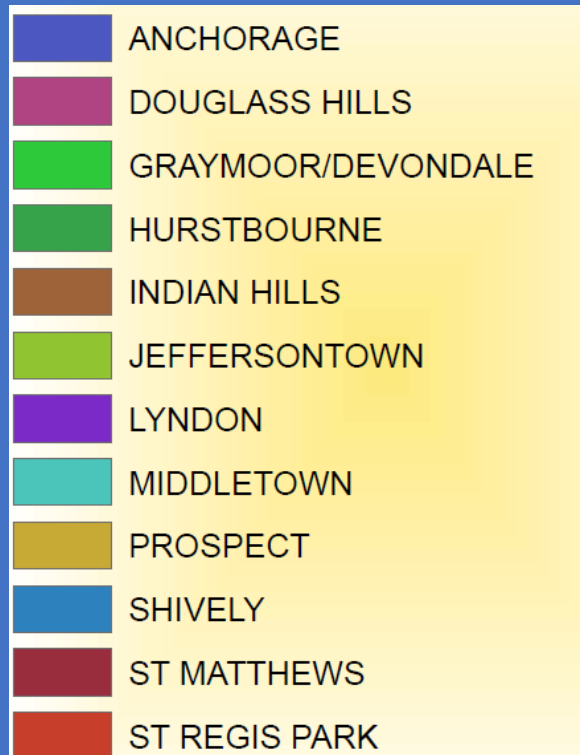
January 1, 2019




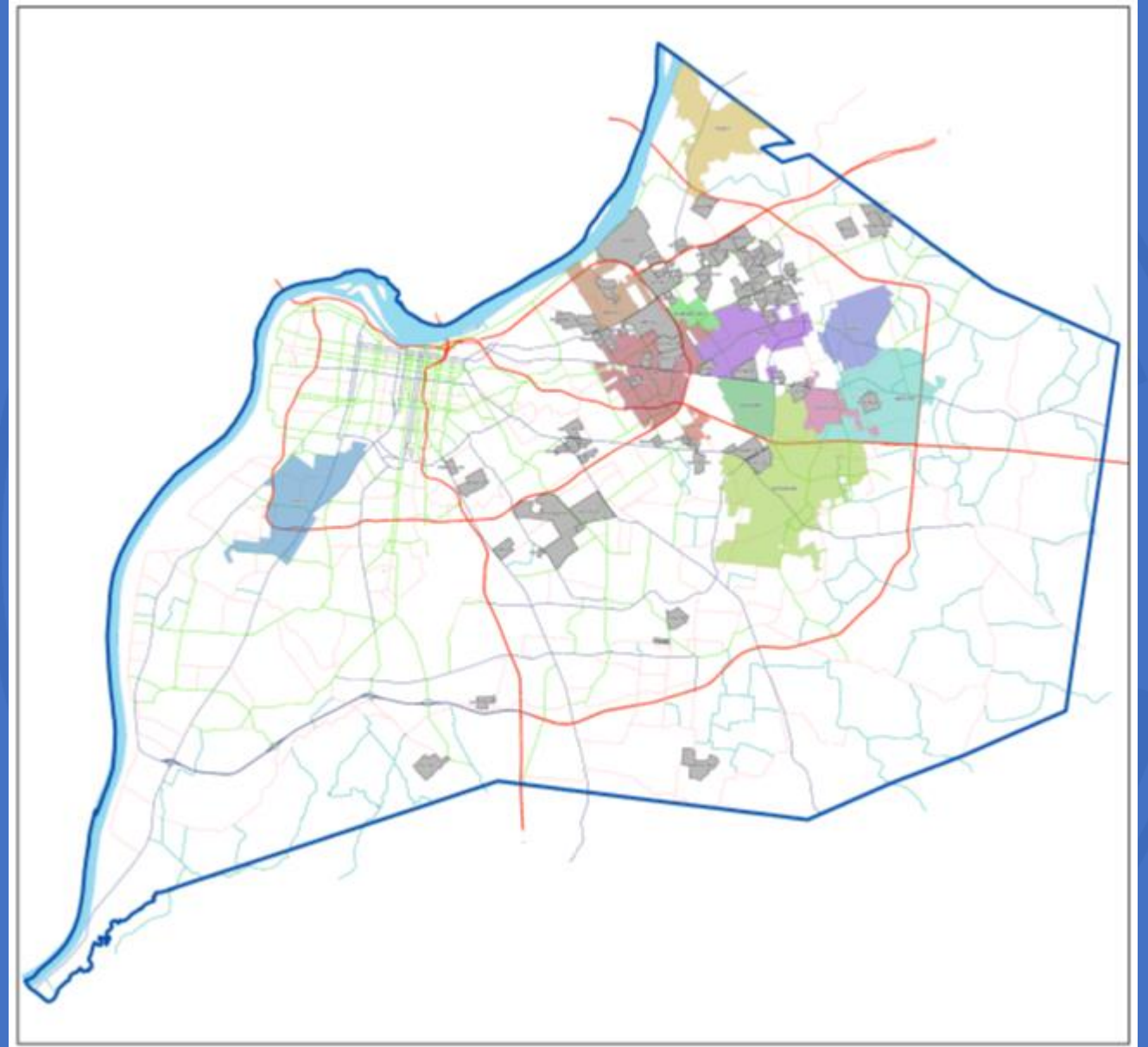
# ZONING - MAP & TEXT



# SMALL CITIES WITH ZONING AUTHORITY



 CITIES WITHOUT ZONING AUTHORITY



# PLANNING & DESIGN SERVICES

**BOZA**

**PLANNING  
RESOURCES**

**TRANSPORTATION  
PLANNING**

**URBAN DESIGN**

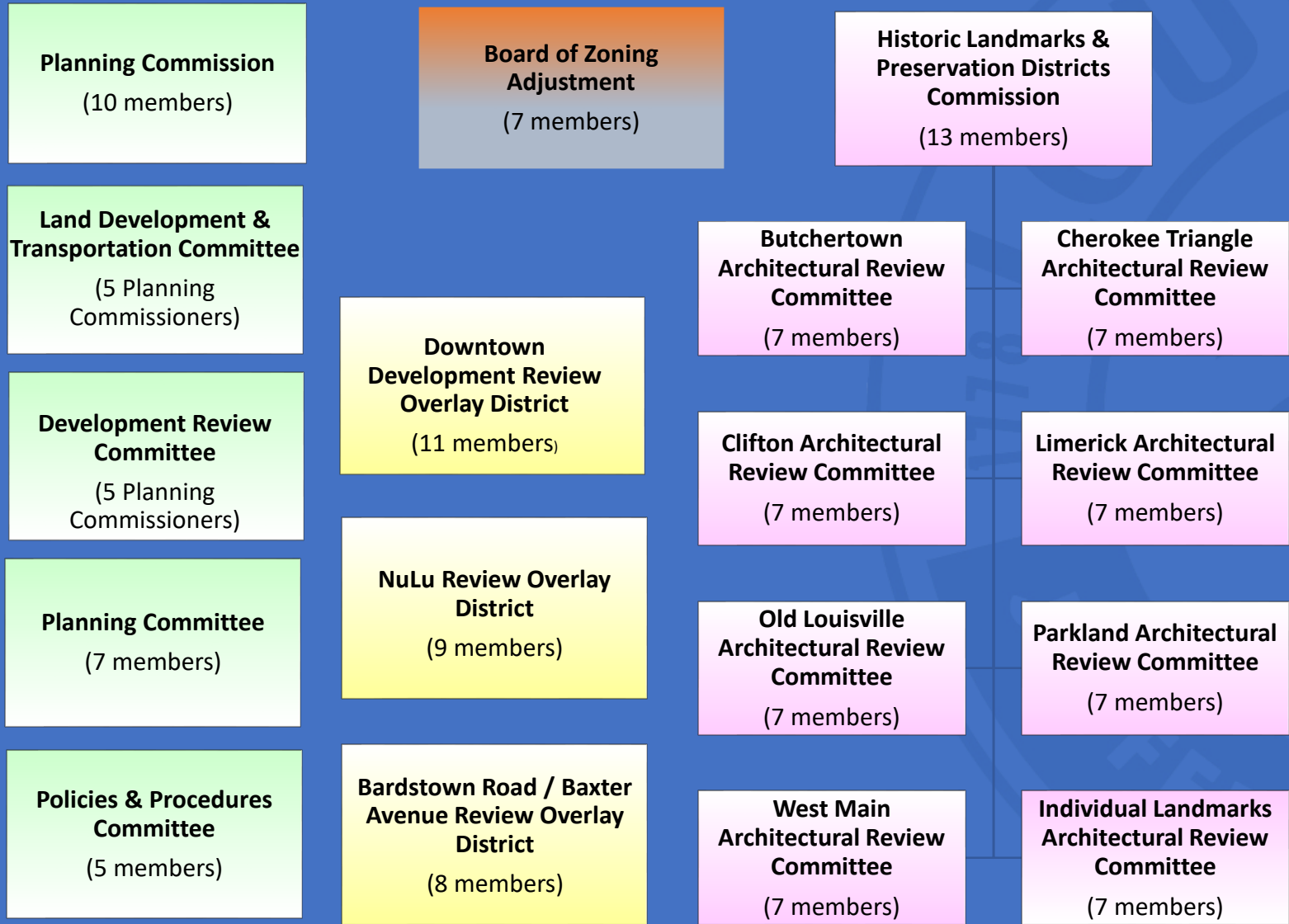
**ZONING**

**ZONING  
ENFORCEMENT**



- Maintaining Louisville's Comprehensive Plan
- Administering Zoning Codes for 13 Legislative Bodies
- Zoning, Subdivision & Site Plan Review
- Historic Preservation & Urban Design Review
- Customer Service
- Zoning Enforcement
- Transportation Planning

# BOARDS, COMMISSIONS & COMMITTEES



# 2022 ACCOMPLISHMENTS

- In-Person/Virtual Hybrid meetings started in May. This has benefited members of the community who are unable to make it downtown or are only interested in observing meetings, as well as out-of-town members of applicant parties. There have been over 1,000 people who have logged into virtual meetings.
- PDS staff worked with members from the American Planning Association's Ohio and Indiana Chapters to host the 2022 OKI Regional Planning Conference in Louisville. Over 400 planning professionals and local officials attended the three-day affair, which was held in Louisville for the first time since 2008.





# 2022 ACCOMPLISHMENTS

**Kentucky Child Care Facts**


**HALF**  
of Kentucky communities  
are child care deserts, where families have limited  
or no access to child care

**14%**  
of parents quit a job, did not take a job, or greatly  
changed their job due to problems with child care  
for children under 6

Child care expenses for an infant take up

**36%**  
of a single parent's income

All data are prior to the pandemic.

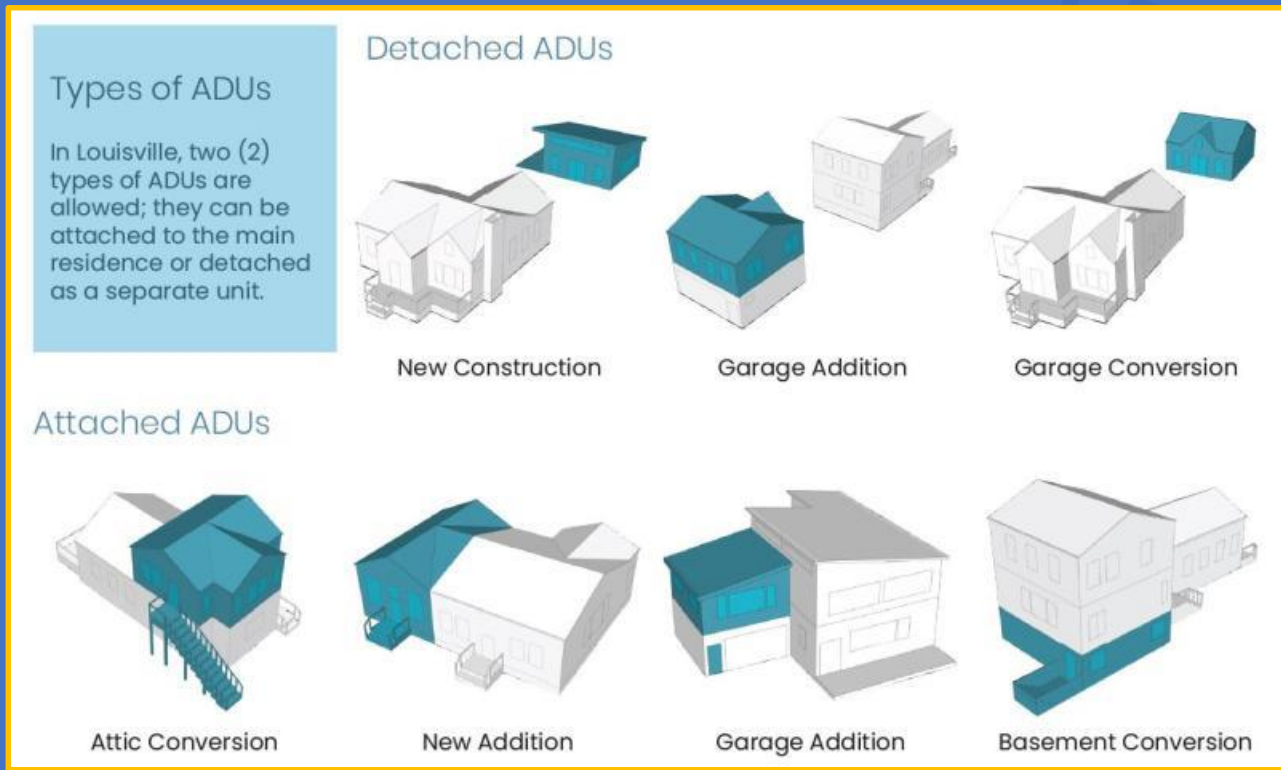
 **BLUEPRINT for  
KENTUCKY'S CHILDREN** [kyyouth.org/blueprintky](http://kyyouth.org/blueprintky)

- A Land Development Code amendment to reinstitute regulations to permit childcare facilities in R-4 and R-5 zoned areas with a conditional use permit were approved. Other LDC amendments include the passage of regulations to allow establishments to create Outdoor Dining spaces and Heavy Truck parking regulations.



# 2022 ACCOMPLISHMENTS

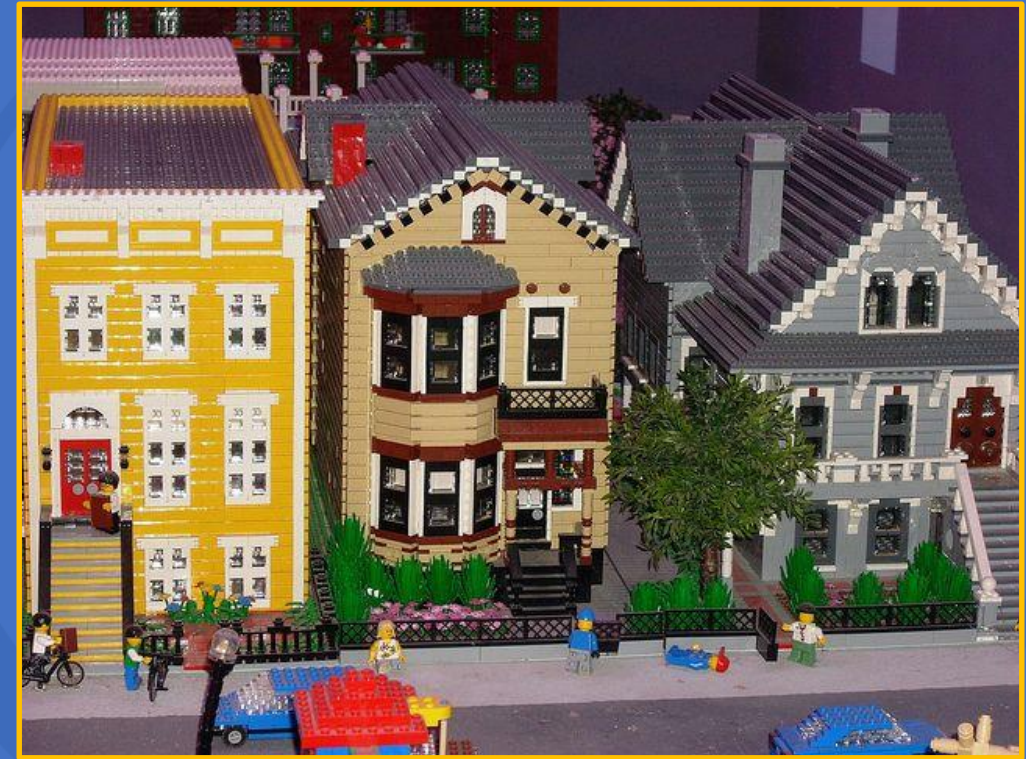
- PDS earned an AARP Challenge Grant to help create materials designed to educate the public about Accessory Dwelling Units and how they can go about establishing units like this on their properties.



- PDS collaborated with Lexington-Fayette Urban County Government Division of Planning to conduct the 2022 ADU Conference in February 2022.
- <https://youtu.be/NDMwd0MPztM>
- <https://louisvilleky.gov/government/planning-design/accessory-dwelling-units-adu>

# 2022 ACCOMPLISHMENTS

- PDS staff took the zoning show on the road, conducting “Neighborhood Office Hours” at locations around the community. These sessions allowed residents to speak with planners about topics that they felt were important, and gave PDS staff an opportunity to discuss Middle Housing Initiatives with citizens. This included our “Middle Housing Workshop,” where citizens were encouraged to engage with one another to create their ideal neighborhood using LEGO bricks representing various types of housing and uses.



# 2022 ACCOMPLISHMENTS

- National Trust for Historic Preservation awarded historic Quinn Chapel AME Church a \$150,000 grant for electrical services.
- National Alliance of Preservation Commissions awarded Metro's Landmarks Commission with an award for the survey work conducted on buildings in the Beechmont Neighborhood and City of Lynnview.
- As part of its Underrepresented Community Grants program, the National Parks Service awarded Louisville Metro a \$30,000 grant to go towards the completion of a survey and National Register nomination for the James Taylor-Jacob School Subdivision.



APPLICATION TYPE	NUMBER OF APPLICATIONS
<b>Administrative</b> (Zoning Certifications, STR Registrations, Signs, etc.)	<b>2,428 (2,374)</b>
<b>BOZA</b> (Variances, CUPs, etc.)	<b>648 (490)</b>
<b>Site Plan</b> (Dev Plans, Waivers, etc.)	<b>723 (607)</b>
<b>Subdivision</b> (Minor Plats, Record Plats, etc.)	<b>252 (274)</b>
<b>Urban Design</b> (Certificates of Appropriateness, Designations, etc.)	<b>331 (305)</b>
<b>Zoning</b> (Zonings and Streets)	<b>200 (196)</b>
<b>TOTAL</b>	<b>4,682 (4,246)</b>

## WHAT'S UP?

CUP Pre-Apps – 267 (up 88 percent from 2021)

Formal CUPs – 144 (up 58.2 percent)

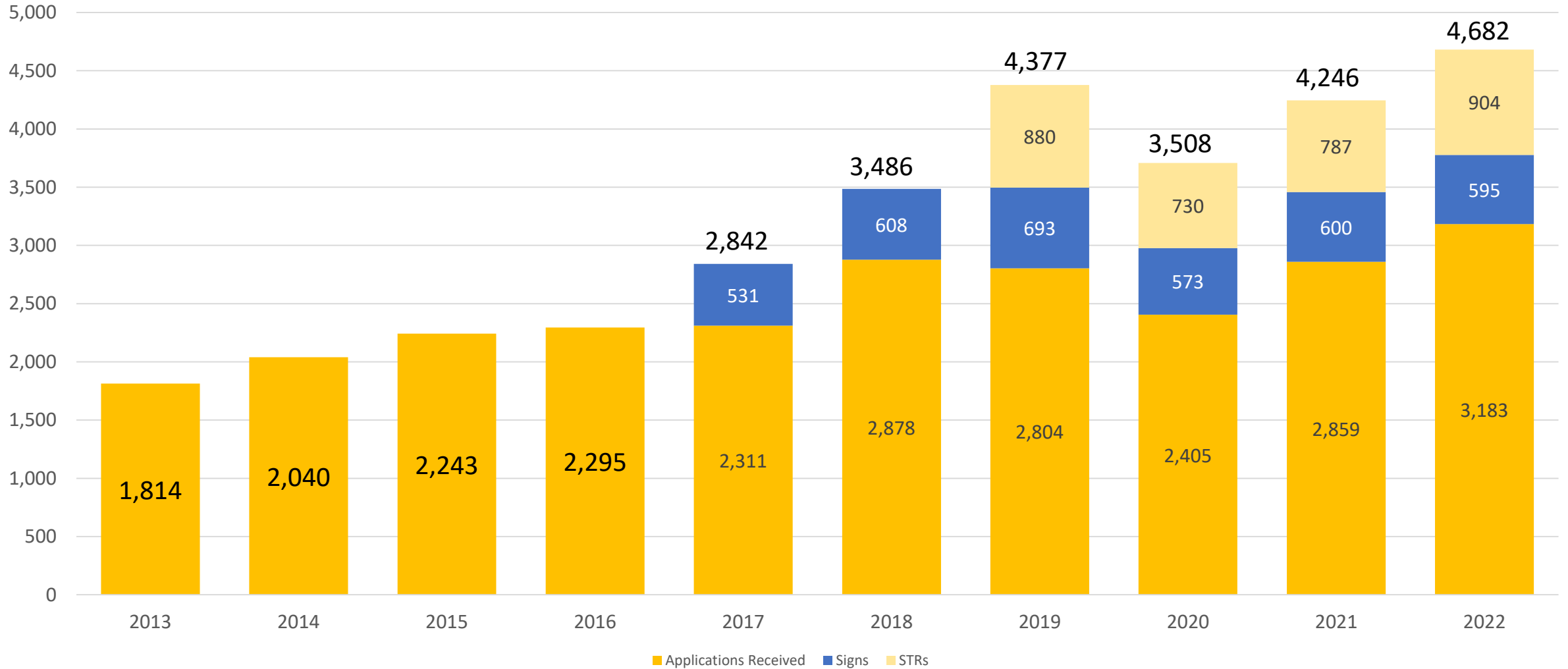
Waivers – 248 (up 49.4 percent)

Category 2Bs – 60 (up 42.8 percent)

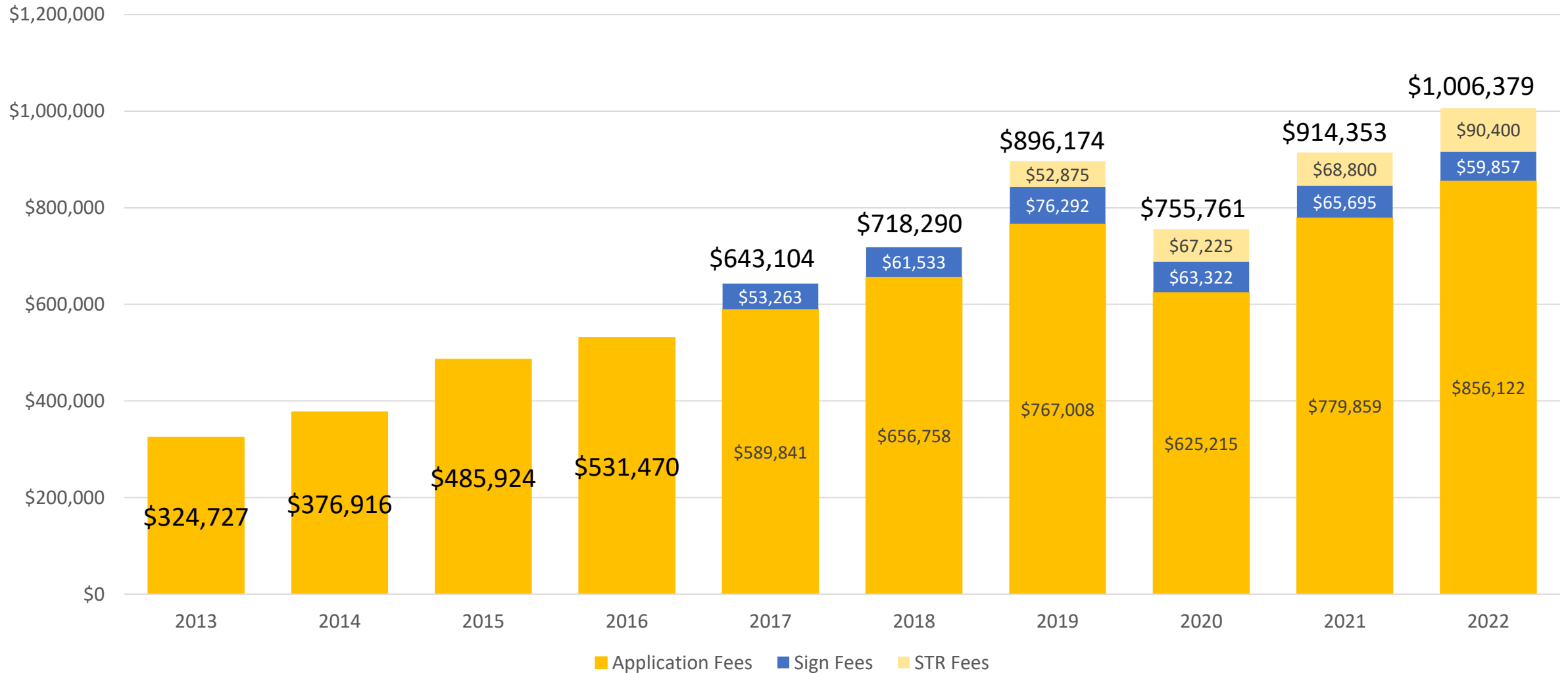
Zoning Pre-Apps – 105 (up 16.7 percent)

Certificates of Appropriateness – 291 (up 7 percent)

# Total Applications: 2013 to 2022



# Fees Accepted: 2013 to 2022





# Average Meeting Times and Number of Meetings

## Planning Commission (30 meetings)

- 3 hours 32 minutes (Overall)
- 3 hours 54 minutes (5 Night Hearings)

LD&T (20 meetings): 2 hours 37 minutes

DRC (23 meetings): 2 hours 4 minutes

Other PC Committees (6 meetings)

BOZA (30 meetings): 3 hours 55 minutes

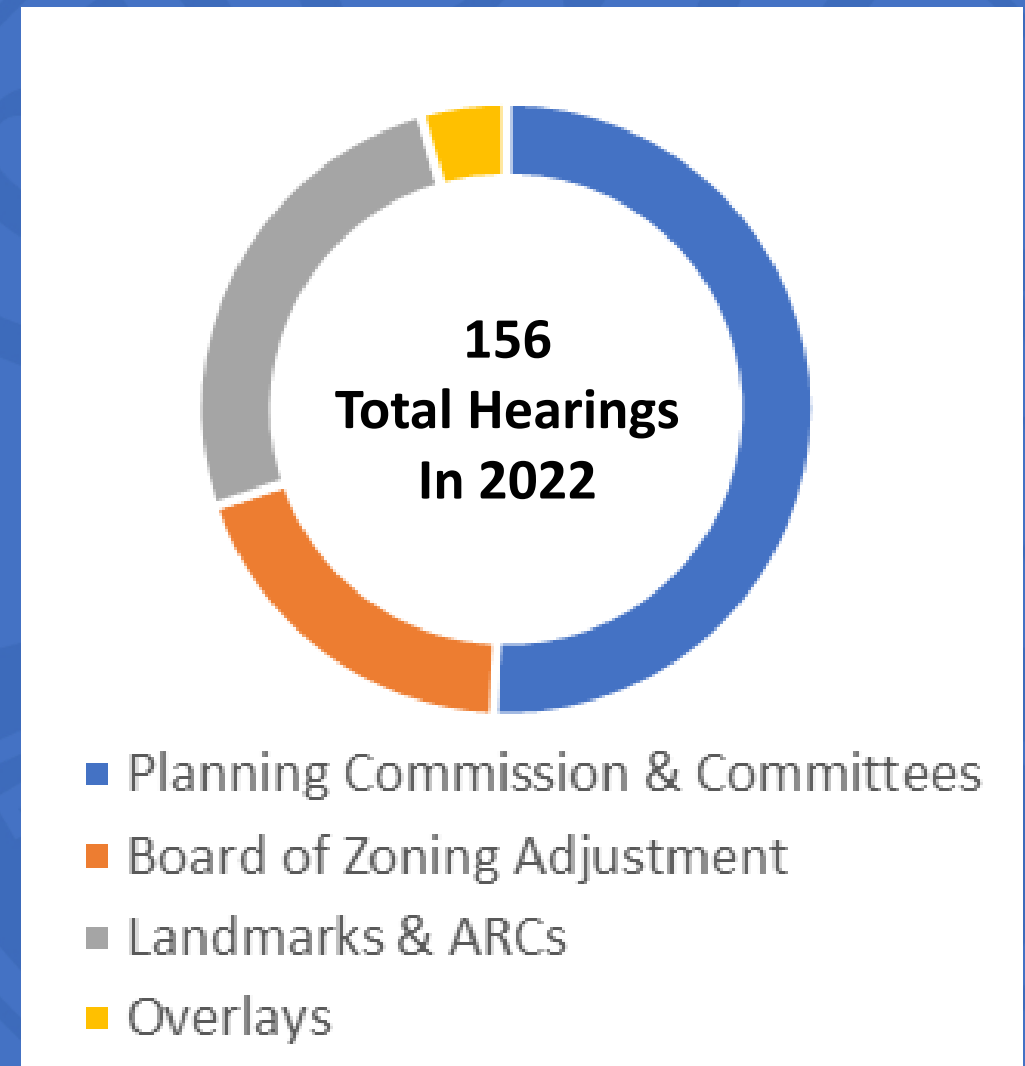
Landmarks Commission (8 meetings)

- 1 hours 36 minutes

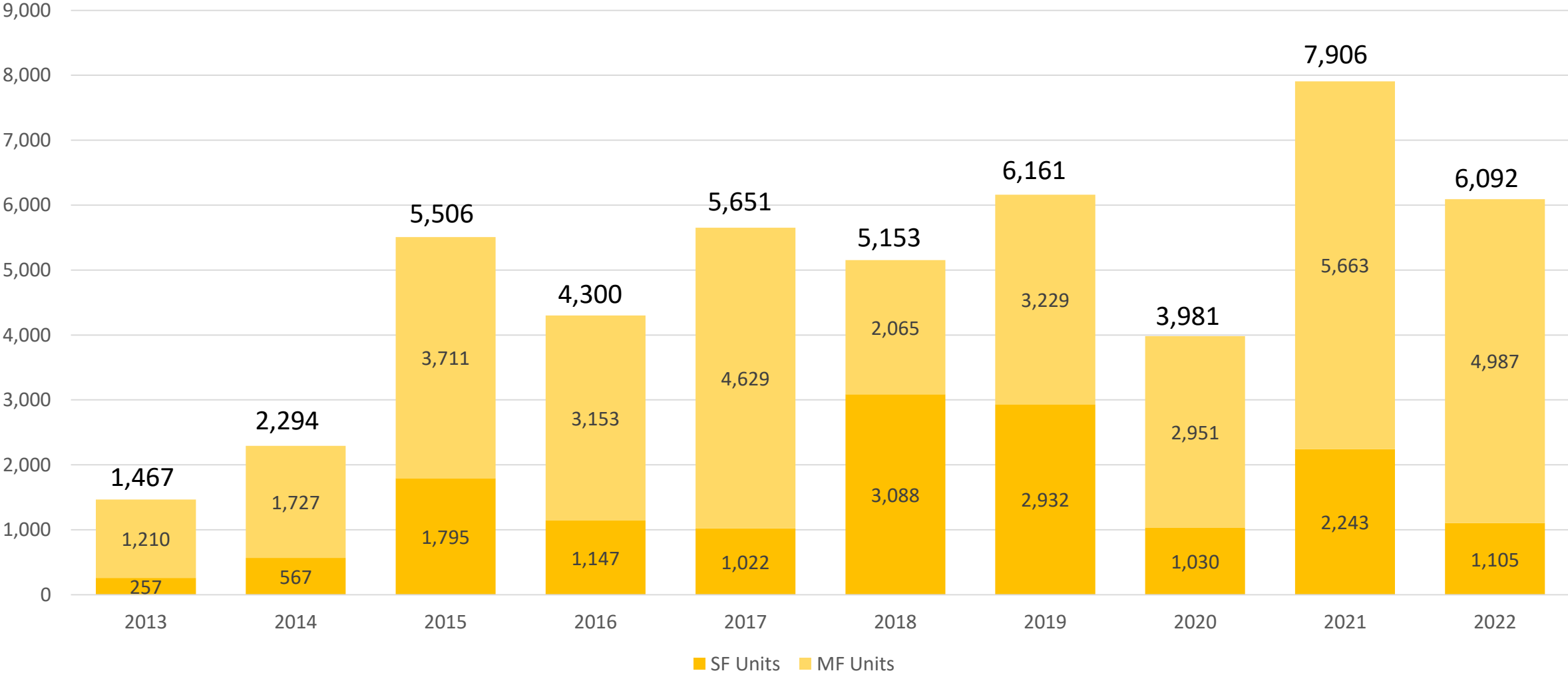
ARC (32 meetings)

Overlay Committees (7 meetings)

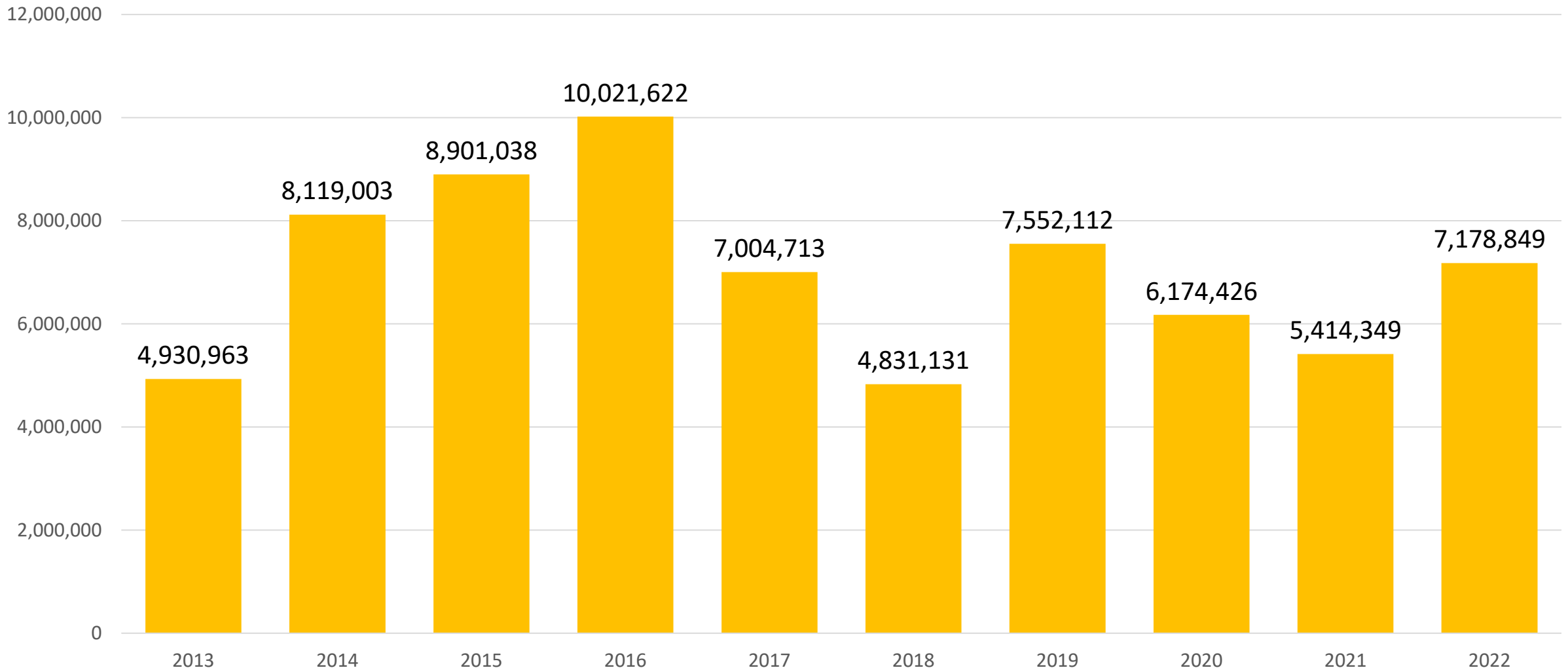
- 1 hour 16 minutes



# Units Approved: 2013 to 2022



# Sq. Ft. of Development – 2013 to 2022



# Zoning Enforcement

In 2022, the Zoning Enforcement Team was expanded following the provision of additional funding by Metro Council.

Total Cases Opened in 2022: 1,597

Total Inspections in 2022: 4,522

**Total Notices of Violations 2022: 737**

**Total Citations Issued in 2022: 478**

Total Fines Issued in 2022: \$106,250

Total Fines Collected in 2022: \$43,725

**2022**

4 Officers

3 Office Team Members



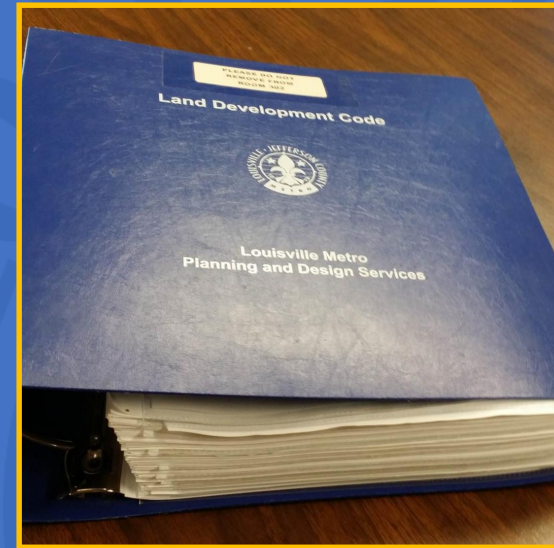
# PLANNING & ZONING COMMITTEE

## 20 meetings in 2022, with a total of 81 items placed on the agendas

- 47 Zoning cases
- 9 Revised Detailed Development Plans
- 8 Street Closure requests
- 4 Land Development Code amendments  
(ex. 21-LDC-0013 regarding Child Care regulations)
- 1 Areawide/Neighborhood Plan  
(ex. 21-AREA-0001 Butchertown-Phoenix Hill-NuLu Neighborhood Plan)
- 7 Resolutions
- 5 Ordinances

# ON THE HORIZON FOR 2023

- Zoning Reform/LDC Amendments
- Missing Middle Housing
- Capacity Standards
- Comprehensive Plan Review
- Streamlining Development Review Process
- Building Permit Reviews
- Historic Preservation Guidelines



# ON THE HORIZON FOR 2023

Zoning Matters: Conversations with a City Planner  
(3:00 – 7:00 PM)

March 14 – Southwest

March 28 – Crescent Hill

April 11 – Portland

April 25 – Northeast

May 9 – Western

May 23 – Fairdale

June 13 – Main

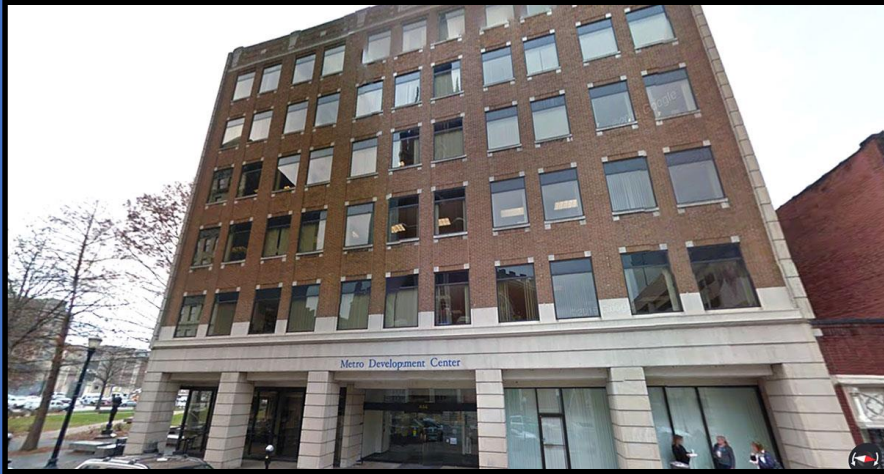
July 27 – Iroquois

August 8 – Bon Air

August 22 - Newburg



# PLANNING & DESIGN SERVICES



## Office Location:

Metro Development Center  
444 S. Fifth Street, 3<sup>rd</sup> Floor

## Website:

<https://louisvilleky.gov/government/planning-design>

## Meeting Locations:

Old Jail Auditorium  
514 W. Liberty Street





# QUESTIONS?