



Stonestreet Road Commercial Center

A Project by Axis Investments, LLC

Rezoning from R-4 to C-1

Planning Commission Public Hearing 5/26/22

Zoning and Uses in Area



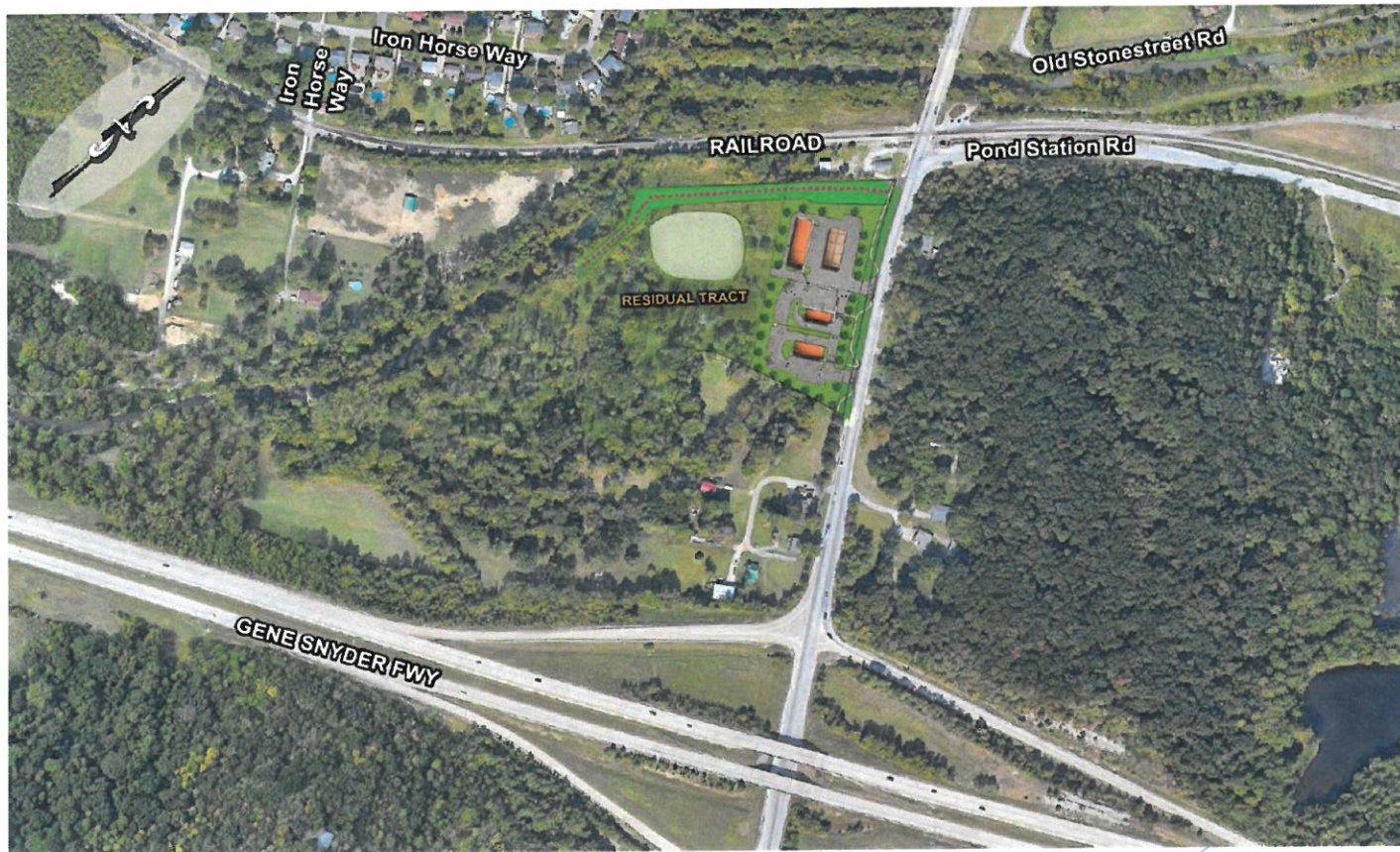
Stonestreet Road facing I-265 Access



Subject Property



Proposed Development in Context

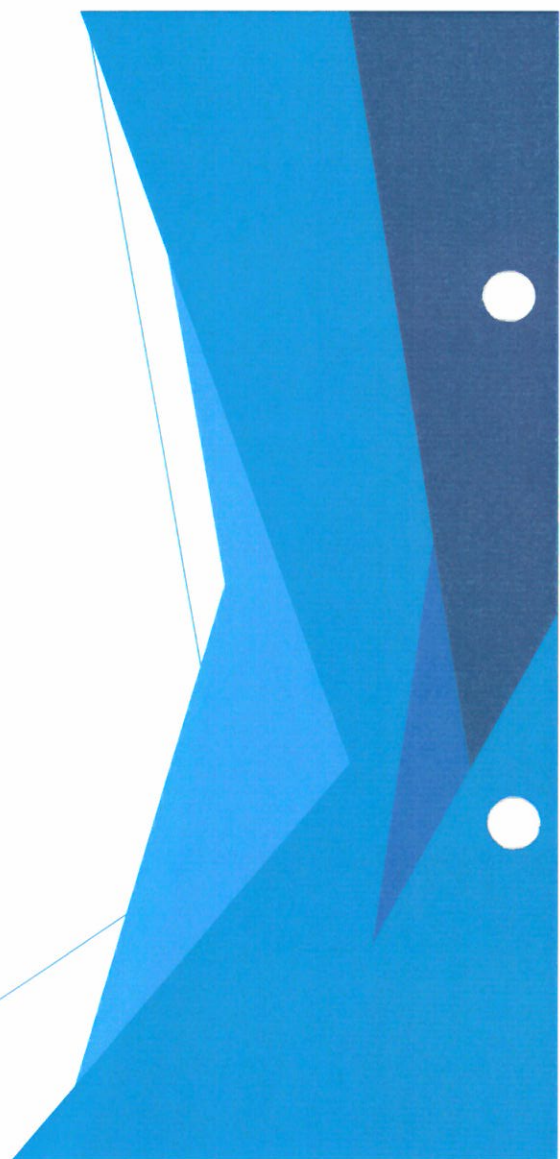
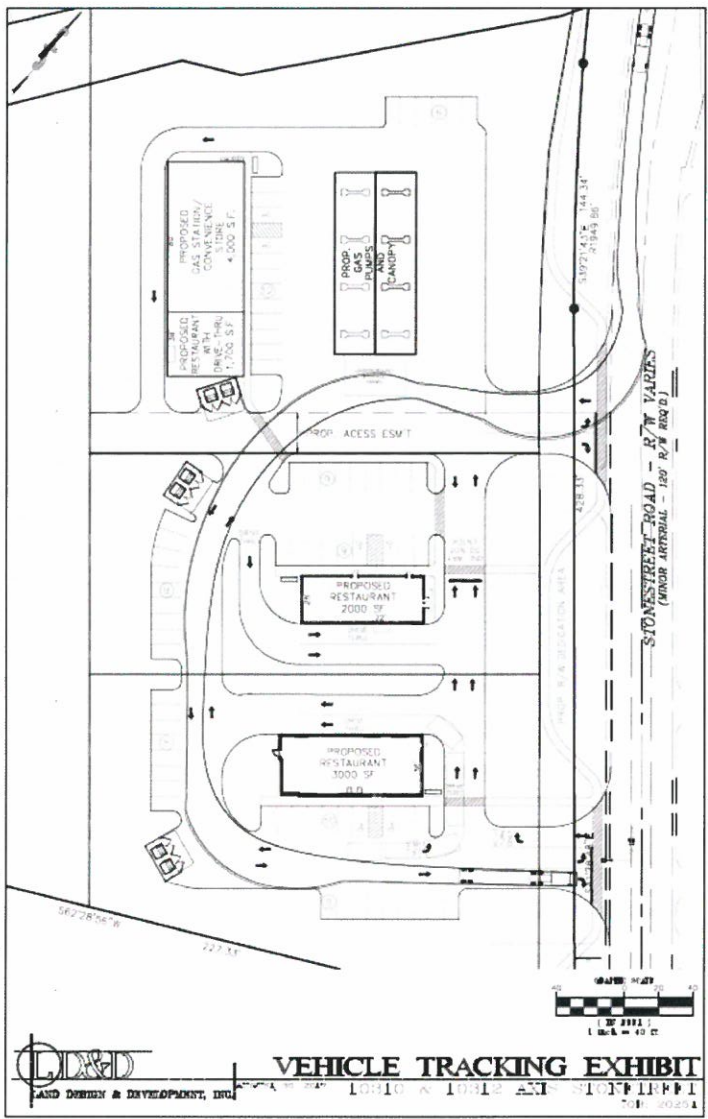


Proposed Development and Louisville Loop Alignment



Proposed Development Plan





Similar Fuel Center on Terry Rd.



Louisville Loop Connection





Stonestreet Road Commercial Center

A Project by Axis Investments, LLC

Rezoning from R-4 to C-1

LD&T 4/14/22



Zoning and Uses in Area



Stonestreet Road facing I-265 Access



Subject Property



Proposed Plan in Context



Proposed Plan



Similar Fuel Center on Terry Rd.



Louisville Loop Connection

