



1139 South Fourth Street  
Louisville, KY 40203  
502.625.3009  
**Corporate Headquarters**  
6575 West Loop South, Suite 300  
Bellaire, TX 77401  
Main: 713.520.5400

**VIA EMAIL**

April 9, 2021

Mr. J. Mark Madison  
President/Director of Planning  
Milestone Design Group  
108 Daventry Lane  
Louisville, Kentucky 40223  
markmadison@milestonedesign.org

**Subject: Water/Wetland Delineation Summary Report  
7312 River Road Property  
Jefferson County, Kentucky  
Redwing Project No.: PRJ103762**

Dear Mr. Madison:

RES Kentucky, LLC dba Redwing (Redwing) is pleased to provide Milestone Design Group (Milestone) with this Water/Wetland Delineation Summary Report for the approximately 3.5-acre 7312 River Road Property in Jefferson County, Kentucky. The goal of these services was to identify the location and extent of jurisdictional water/wetland features within the project boundary in order to assist Milestone with development planning for this project.

#### **METHODOLOGY**

The delineation included both in-house and field components. In-house research involved review of the USGS topographic quadrangle map, aerial photography, the Jefferson County soil survey, and Federal Emergency Management Agency (FEMA) floodplain mapping. Following review of these materials, Redwing conducted a field delineation on March 26, 2021 to identify the location and extent of jurisdictional waters/wetlands within the project boundary. The presence of jurisdictional streams was evaluated based on ordinary high-water mark (OHWM), defined bed and bank features, and flow regimes. Potential wetland areas were investigated using the Routine On-Site Determination Method as defined in the *Regional Supplement to the Corps of Engineers Wetland Delineation Manual: Eastern Mountains and Piedmont Region – Version 2.0* (April 2012). This technique uses a multi-parameter approach that requires positive evidence of three criteria: wetland hydrology, hydric soils, and hydrophytic vegetation. This delineation has not been verified by the

U.S. Army Corps of Engineers (USACE), who holds final authority over determinations of the location and extent of jurisdictional waters/wetlands.

## RESULTS

The approximately 3.5-acre project boundary is located at 7312 River Road, Prospect, Kentucky, immediately north of the River Road and Mayfair Avenue intersection. The project boundary is comprised primarily of maintained lawn habitat and mature woods habitat covering a regularly maintained and mowed understory/lawn. No jurisdictional or non-jurisdictional water/wetland features were identified within the project boundary (Figure 1).


## DISCUSSION

Jurisdictional waters of the U.S., including wetlands, are defined by 33 CFR Part 328.3 and are protected by Section 404 of the Clean Water Act (33 USC 1344), which is administered and enforced by the USACE. Many water/wetland impacts are also regulated by the Kentucky Division of Water (KDOW) – Water Quality Certification (WQC) Section. Based on the water/wetland delineation, no jurisdictional or non-jurisdictional features are present within the project boundary (Figure 1). Please note that the results of the delineation have not been verified by the USACE, which holds final authority over feature location, extent, and regulatory status. A Jurisdictional Determination request report can be submitted to the USACE to confirm this delineation, if required.

We appreciate the opportunity to assist you on this important project. Please call Neil Guthals at (502) 625-3009 with any questions on this report or the overall project.

Sincerely,

  
J. Anthony Evans *by ylb*  
Ecologist II

  
Neil A. Guthals (Apr 9, 2021 17:02 EDT)  
Neil A. Guthals  
Project Manager II

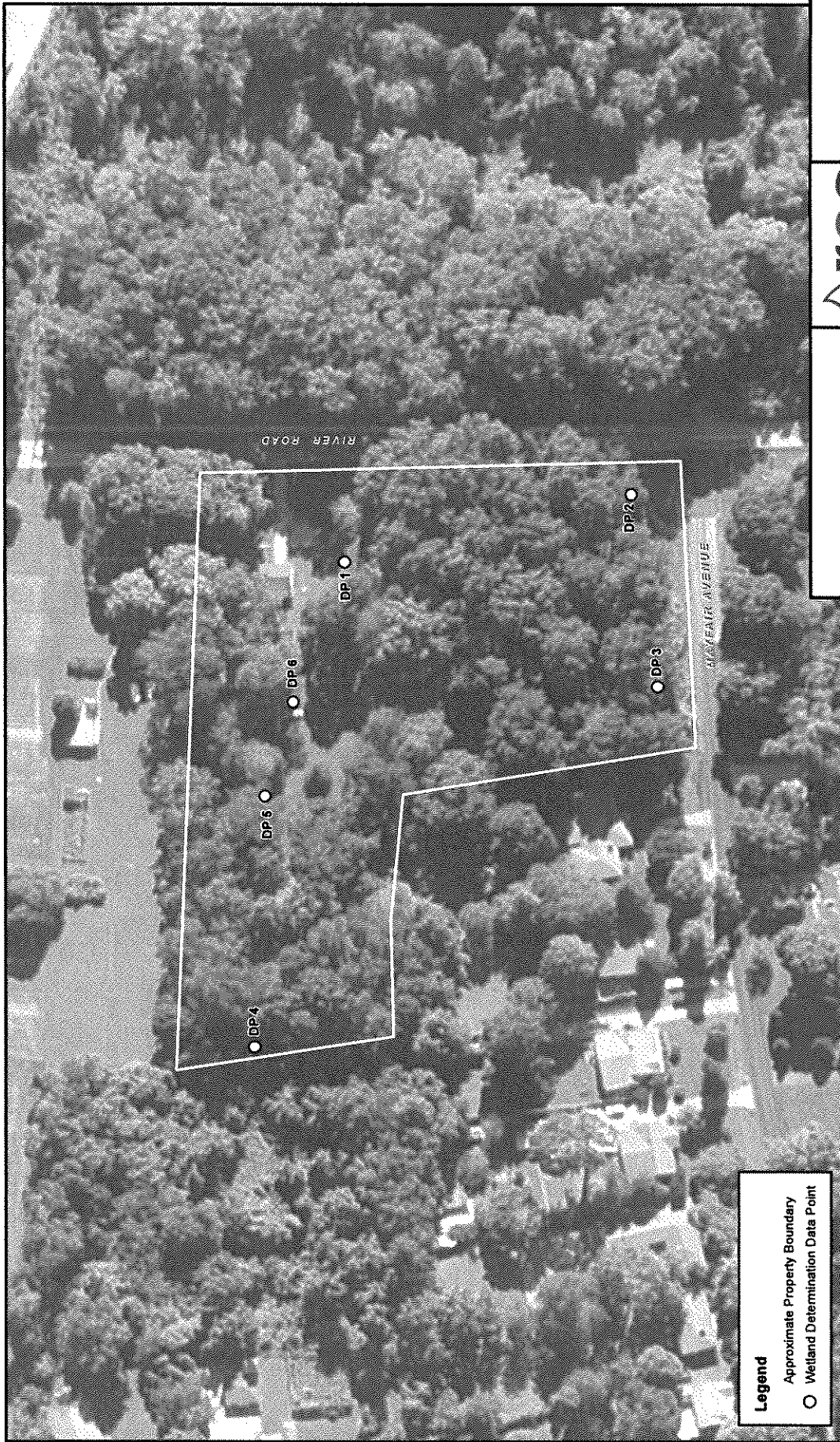
R:\Archives\Redwing\Projects\2021 Projects\103762-7312 River Road\Report\7312 River Road\_Water/Wetland Summary Report.docx

Attachment: Figure 1 – Water/Wetland Location Map

FIGURE

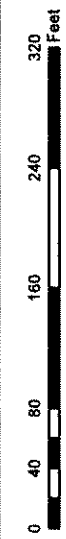


Source: Aerial - kyraiser.ky.gov (2016).



**Legend**

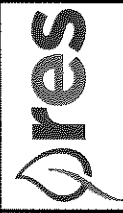
- Approximate Property Boundary
- Wetland Determination Data Point



NOTE: JURISDICTIONAL WATER/WETLAND BOUNDARIES WERE DELINEATED AND SURVEYED BY RES WETLAND SCIENTISTS ON BEHALF OF THE U.S. ARMY CORPS OF ENGINEERS. USE OF THIS MAP IS FOR PRELIMINARY PLANNING PURPOSES ONLY.



7312 RIVER ROAD  
JEFFERSON COUNTY, KENTUCKY



WATERWETLAND  
LOCATION MAP

REVISED DATE: 04-07-21 | DRAWN BY: JAE/ZIT **FIGURE 1**