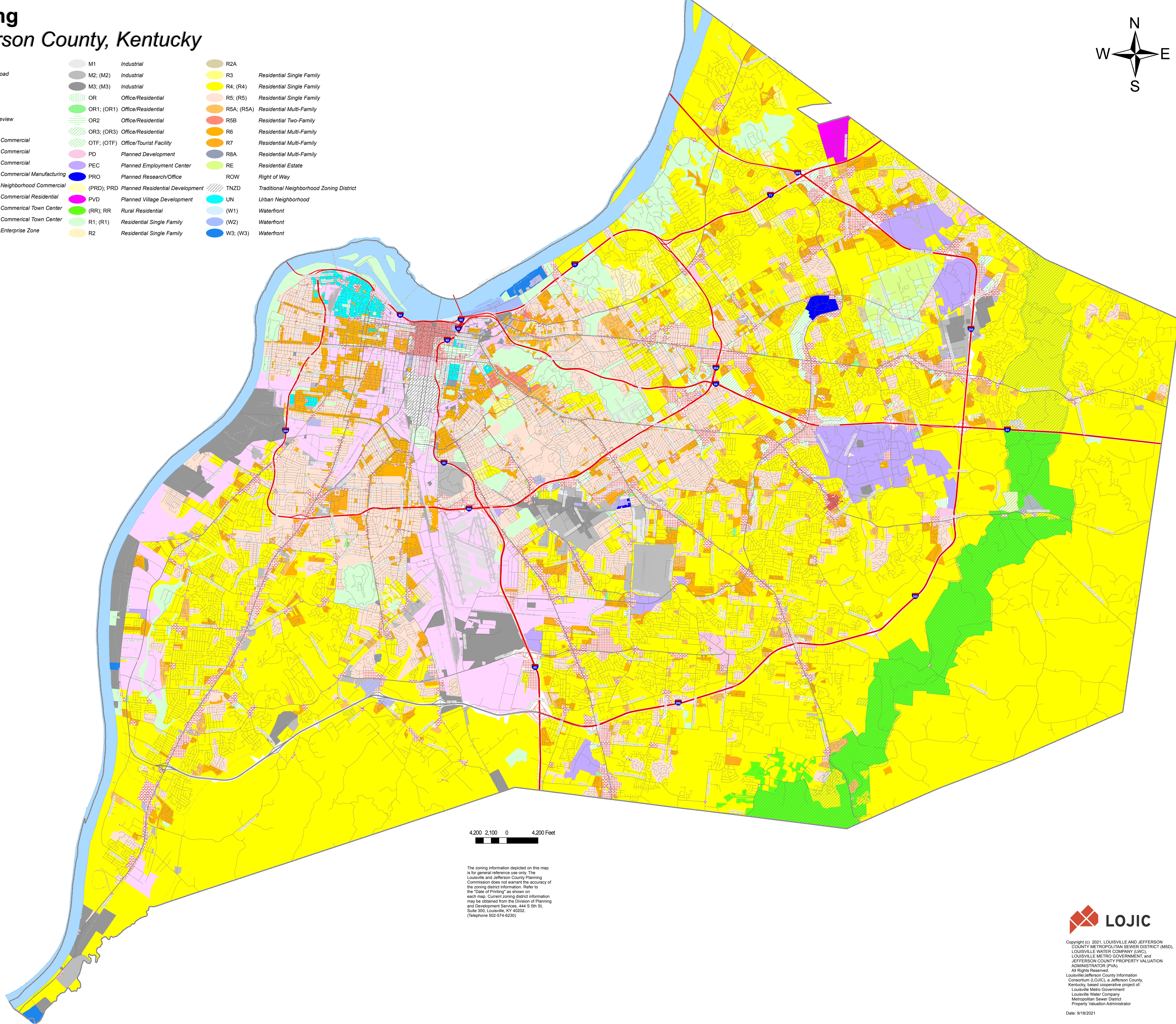
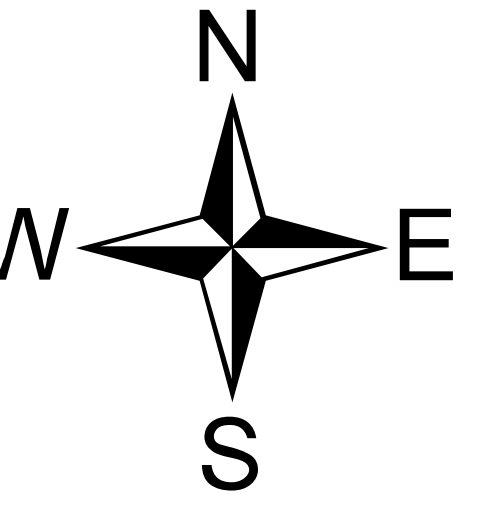


# Zoning

## Jefferson County, Kentucky

**Legend**

<b>Overlay Districts</b>	M1 Industrial	R2A Residential Single Family
Bardstown Road	M2; (M2) Industrial	R3 Residential Single Family
NULU	M3; (M3) Industrial	R4; (R4) Residential Single Family
Downtown	OR Office/Residential	R5; (R5) Residential Single Family
Floyds Fork	OR1; (OR1) Office/Residential	R5A; (R5A) Residential Multi-Family
Waterfront Review	OR2 Office/Residential	R5B Residential Two-Family
<b>Zoning-Detailed</b>	OR3; (OR3) Office/Residential	R6 Residential Multi-Family
C1; (C1) Commercial	OTF; (OTF) Office/Tourist Facility	R7 Residential Multi-Family
C2; (C2) Commercial	PD Planned Development	R8A Residential Multi-Family
C3; (C3) Commercial	PEC Planned Employment Center	RE Residential Estate
CM; (CM) Commercial Manufacturing	PRO Planned Research/Office	ROW Right of Way
CN Neighborhood Commercial	(PRD); PRD Planned Residential Development	TNZD Traditional Neighborhood Zoning District
CR; (CR) Commercial Residential	PVD Planned Village Development	UN Urban Neighborhood
CTC1 Commercial Town Center	(RR); RR Rural Residential	(W1) Waterfront
CTC2 Commercial Town Center	R1; (R1) Residential Single Family	(W2) Waterfront
EZ1; (EZ1) Enterprise Zone	R2 Residential Single Family	W3; (W3) Waterfront



The zoning information depicted on this map is for general reference use only. The Louisville and Jefferson County Planning Commission does not warrant the accuracy of the zoning district information. Refer to the "Date of Printing" as shown on each map. Current zoning district information may be obtained from the Division of Planning and Development Services, 444 S 5th St, Suite 300, Louisville, KY 40202. (Telephone 502-574-6230)