



Goodwill

Industries of Kentucky

ANOTHER WAY



Another Way Staff: Rose Robertson/**Career Coach**, Stephan Gholston/**Peer Support Specialist**, Sharon Allgeier/**Program Manager**

WWW.GOODWILLKY.ORG



September 2021-February 2022

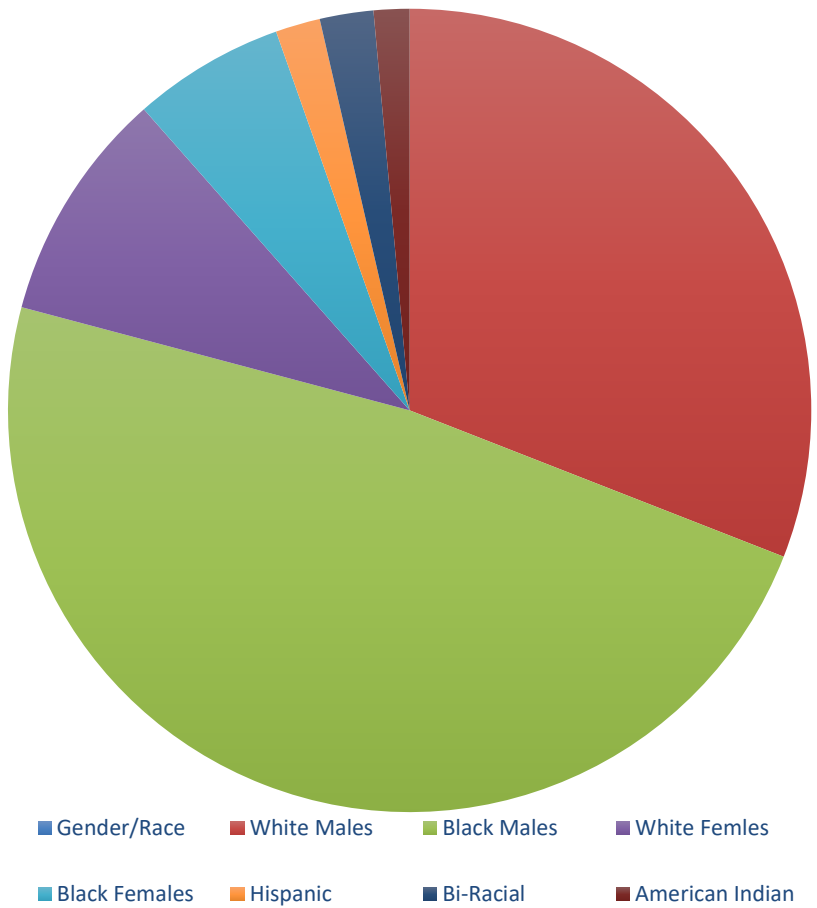
# of Participants Served		281
# Connected to Resources		108
# Employed		17
# of Participants Connected to Resources		
Behavioral/Mental Health		15
Transported to Treatment		5
ID's		4
# Placed in Temporary / Permanent Housing		49
SS Card		4
Food Stamps/Benefits		14
Soft Skills		36
GoodStart		15
RISE		4
Total		97



GOODWILL INDUSTRIES OF KENTUCKY

Demographics

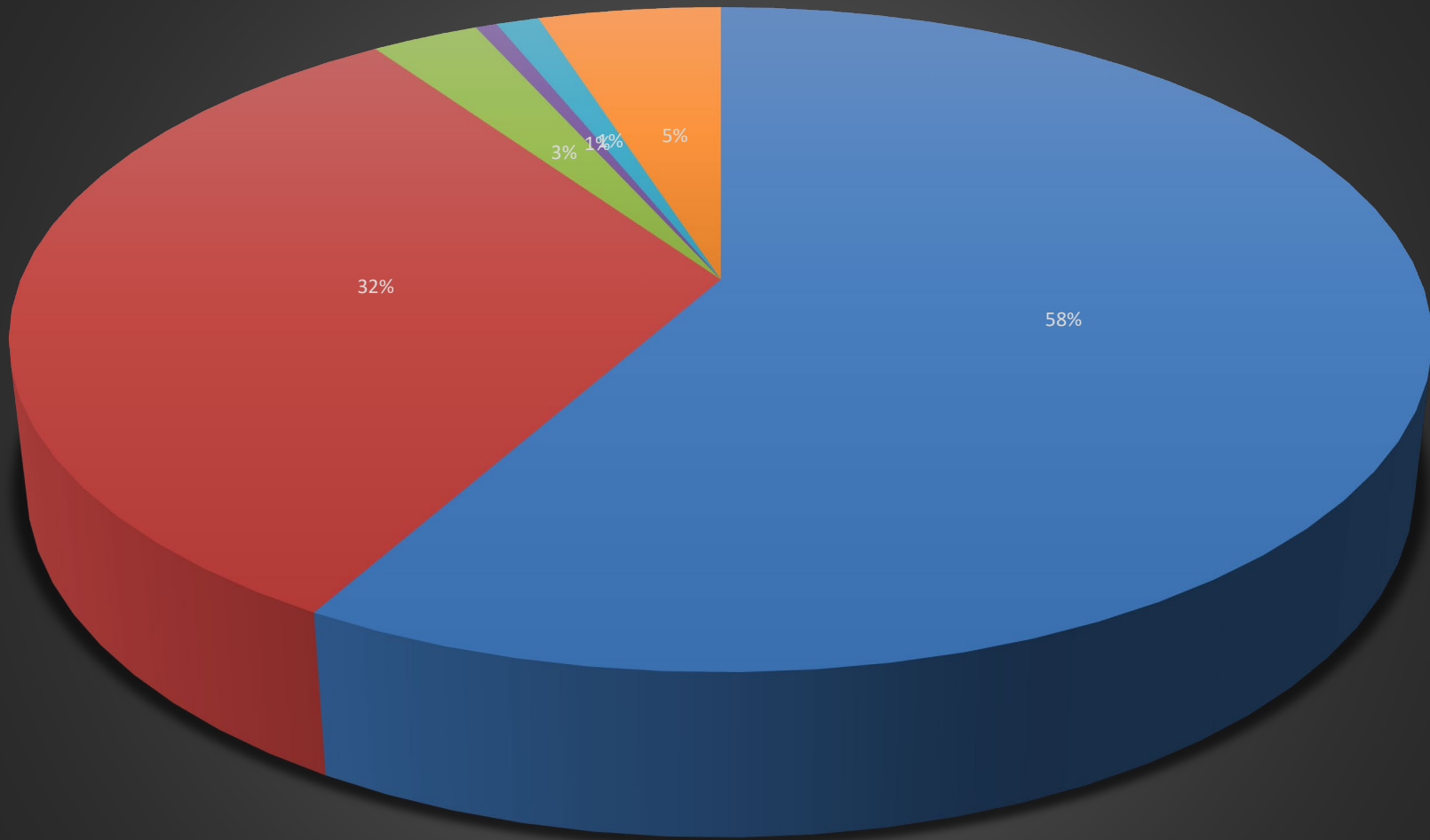
Gender/Race	
White Males	86
Black Males	134
White Femles	26
Black Females	17
Hispanic	5
Bi-Racial	6
American Indian	4



GOODWILL INDUSTRIES OF KENTUCKY



Sub-Populations



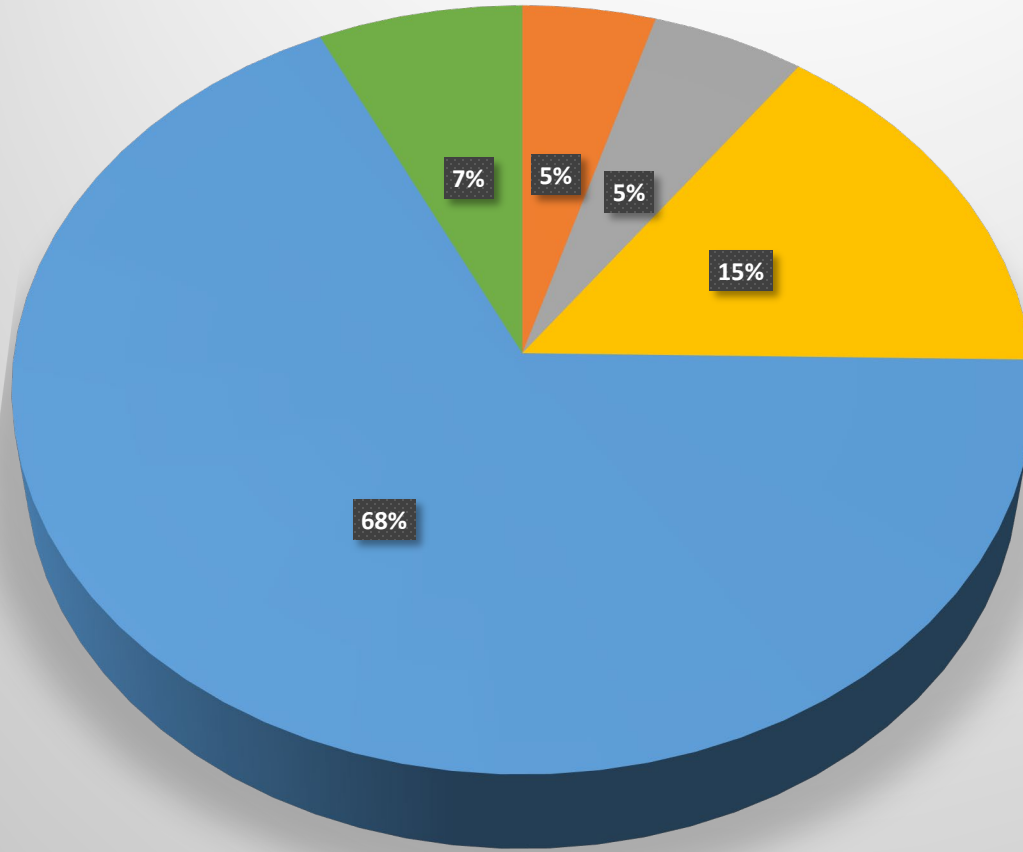
■ Justice Involvement ■ History of Substance Abuse ■ Literacy Deficits ■ Immigrant ■ LGBTQ ■ Veterans



GOODWILL INDUSTRIES OF KENTUCKY



Education Status



■ Education Status:

■ No Schooling

■ Completed 8th Grade

■ Less than High School Diploma

■ High School Diploma

■ College Degrees



GOODWILL INDUSTRIES OF KENTUCKY

CHALLENGES:

- More individuals wanting to take advantage of the program than we can transport.
- Individuals struggle to participate due to substance abuse and mental health issues.
- Environmental Issues: Needles...Bedbugs
- Language Barriers exist in people with poor communication skills.

LESSONS LEARNED:

- Personally, witnessed the transformation of individuals once given the opportunity.
- Participants require constant monitoring due to substance abuse and mental health.
- Safety vests make the participants easily seen in all conditions.
- Many individuals are homeless due to relationship breakup, loss of job/income, eviction, inability to cope with everyday life due to either mental, physical or trauma.
- Individuals fear attending classes due to Literacy Deficit
- Never pre-judge...Some will really surprise you.

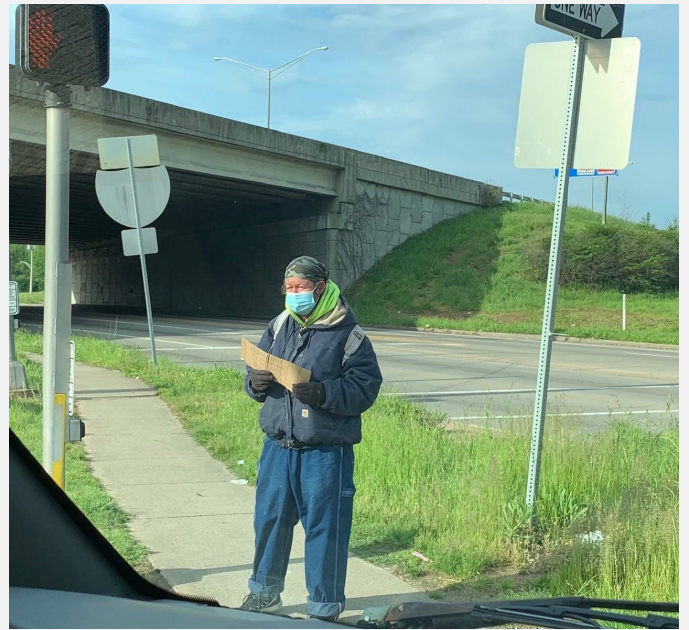
IMMEDIATE NEEDS

- Additional Peer Support in order to meet the needs of participants.
- A van to replace the one donated by Metro United Way which is no longer viable.





PICKUP SITES



GOODWILL INDUSTRIES OF KENTUCKY

Councilwoman Nicole George District 21



GOODWILL INDUSTRIES OF KENTUCKY

Dan Lockett Legislative Assistant District 15



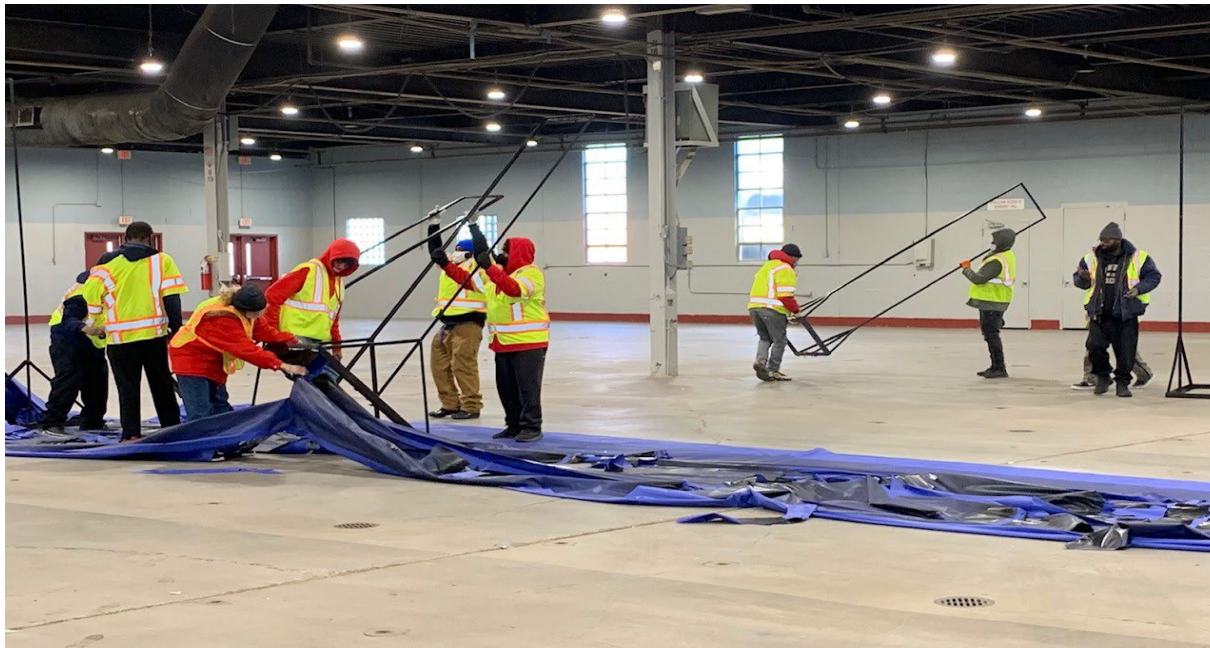
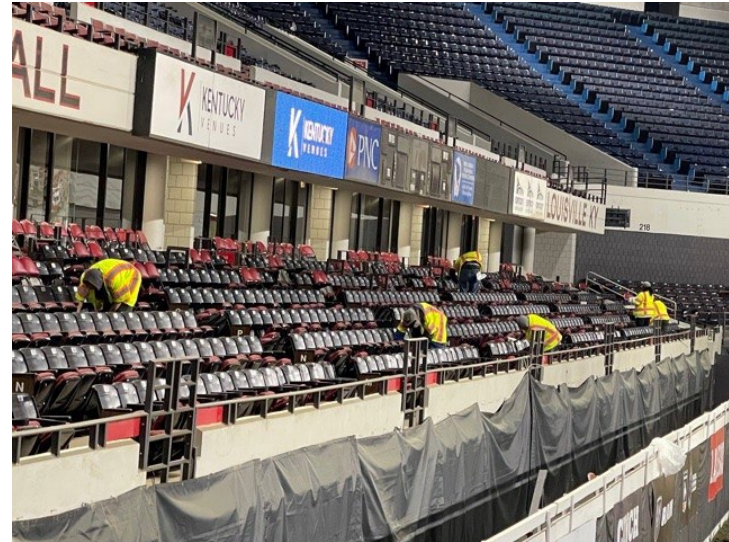
GOODWILL INDUSTRIES OF KENTUCKY

Kip Eatherly Legislative Assistant District 17



GOODWILL INDUSTRIES OF KENTUCKY

Block by Block.....Broadbend Arena.....Kentucky Fair and Expo





Deborah Wilson Another Way Oct 2021

- Completed Soft Skills 10-29-21
- Completed GoodStart 11-5-2021
- Employed at Goodwill Industries of Kentucky 11-15-21-
- Moved from Roberts Hall/Temp Housing to The Friary E Liberty Street



GOODWILL INDUSTRIES OF KENTUCKY

Thank you!



GOODWILL INDUSTRIES OF KENTUCKY

QUESTIONS

