

PROJECT: 13113
DATE: January, 2014
DRAWN BY: J.D.H.
CHECKED BY: J.D.B.
COPYRIGHT © 2014 BANKS ENGINEERING, INC. 2365 HARRODSBURG ROAD SUITE B-175 LEXINGTON, KY 40504
REVISIONS: DATE:

SETZERS
PROPERTIES

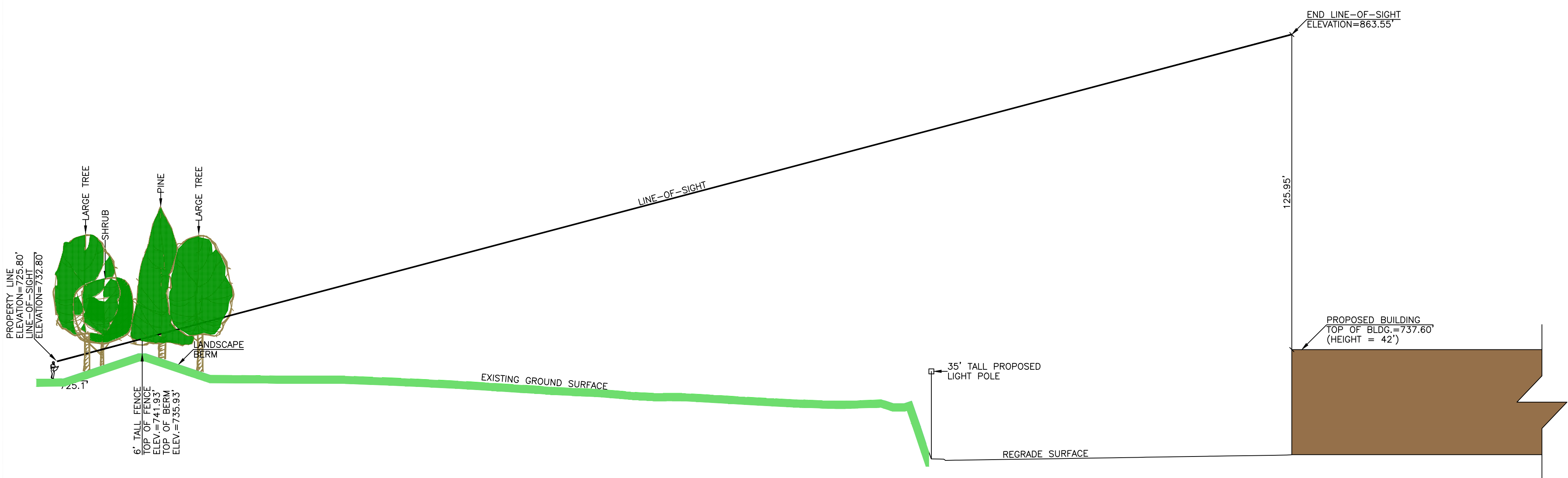
856 CONTRACT STREET
LEXINGTON, KY 40504
(859) 514-7767

SECTIONS
BLANKENBAKER STATION II
A PORTION OF LOTS 17, 18, 23 & 24
A PORTION OF TRACT 1
LOUISVILLE, KENTUCKY 40299

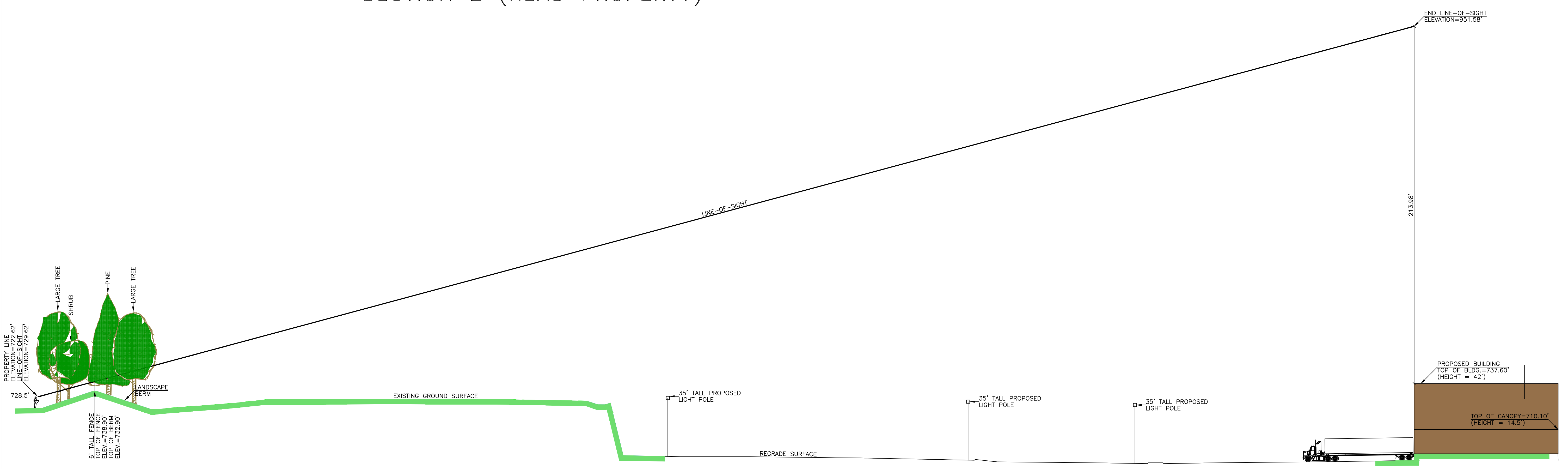
BANKS
Engineering, Inc.

Site Development/Planning • Water/Wastewater • Surveying

Phone (859) 296-6300 Fax (859) 296-6612
2365 Harrodsburg Road, Ste. B-175 Lexington, Kentucky, 40504

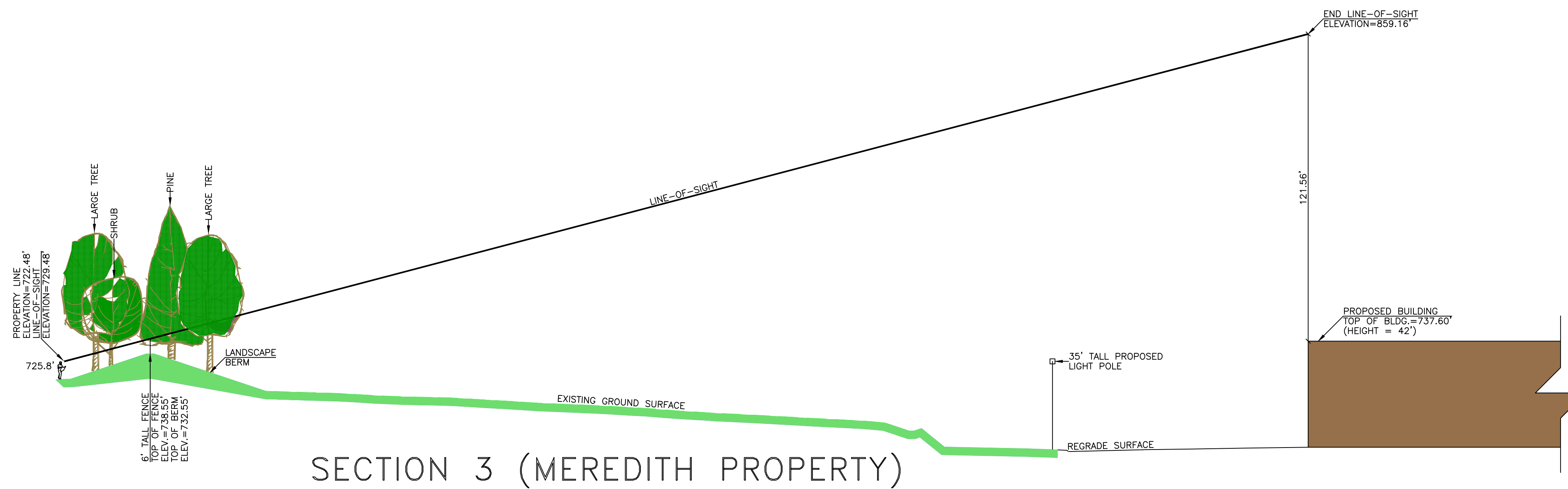
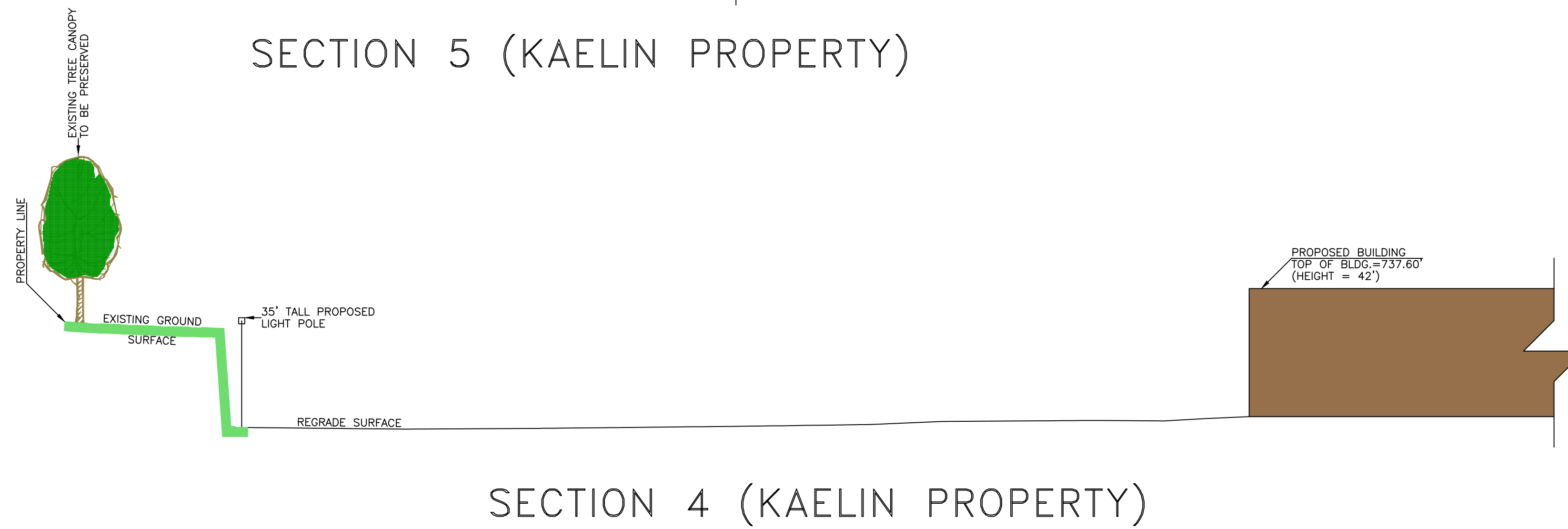
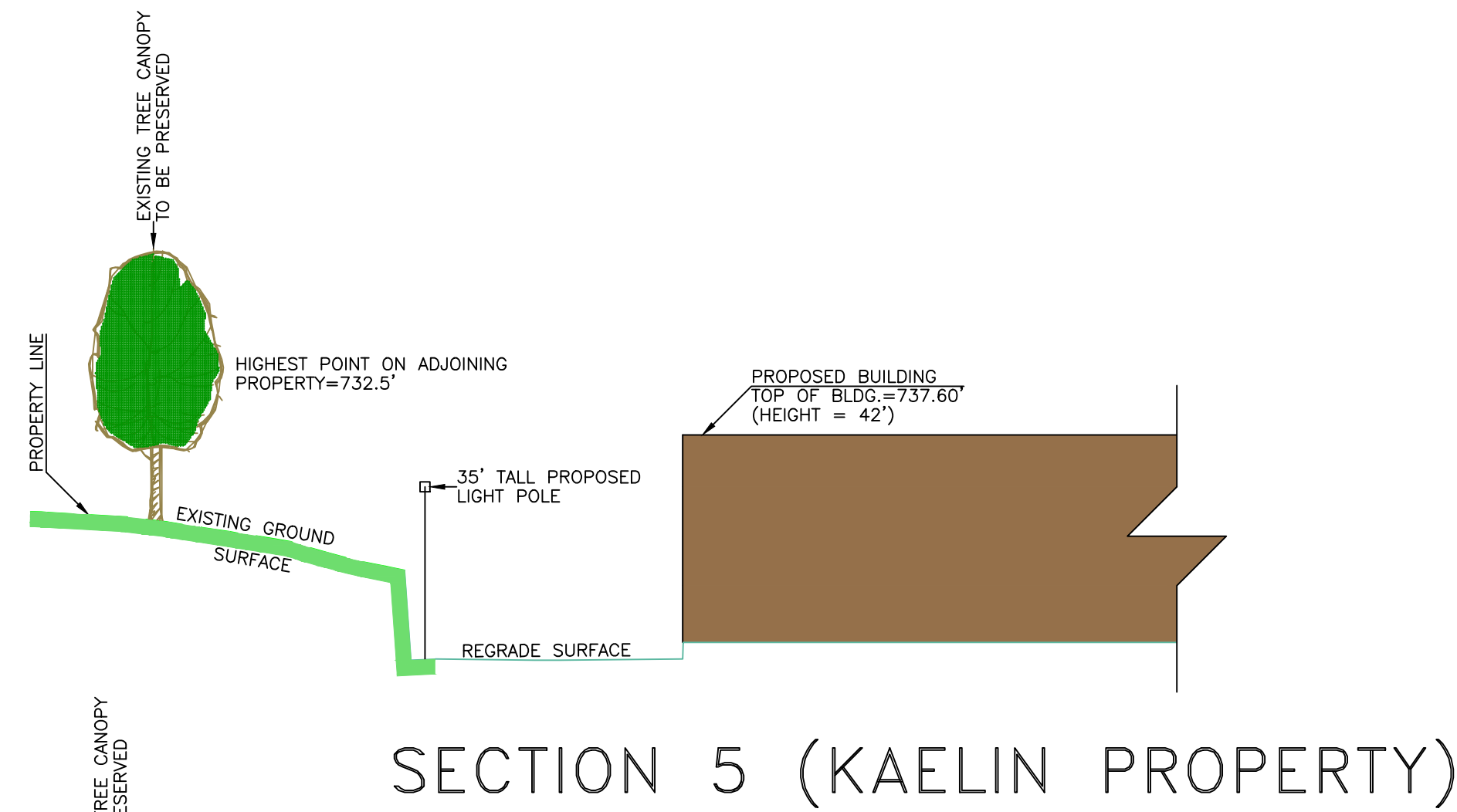
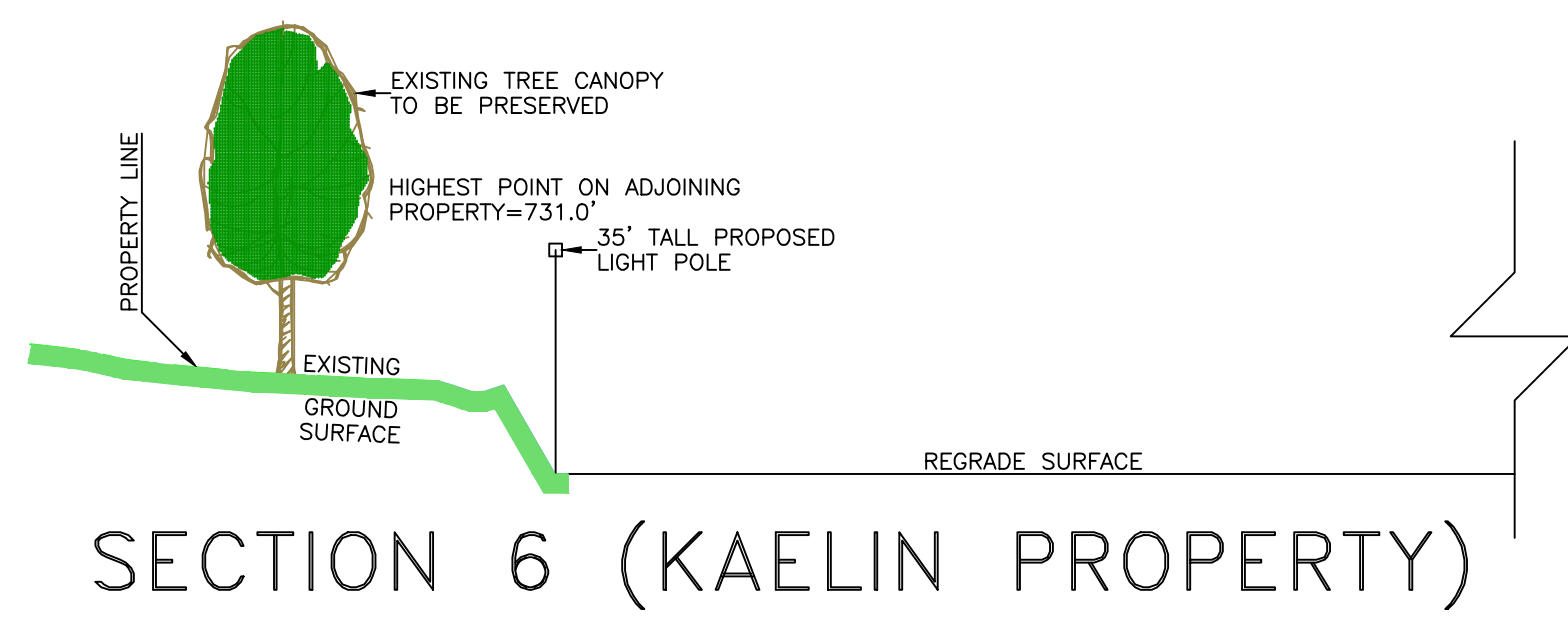


SECTION 2 (READ PROPERTY)



SECTION 1 (BACKMAN PROPERTY)

Vertical Scale: 1"=30'
 Horizontal Scale: 1"=30'



Vertical Scale: 1"=30'
Horizontal Scale: 1"=30'

PROJECT: 13113	
DATE: January, 2014	
DRAWN BY: J.D.H.	
CHECKED BY: J.D.B.	
COPYRIGHT © 2014 BANKS ENGINEERING, INC. 2365 HARRODSBURG ROAD SUITE B-175 LEXINGTON, KY 40504	
REVISIONS:	DATE:

SETZER
PROPERTIES
855 CONTRACT STREET
LEXINGTON, KY 40504
(859) 514-7767

CROSS SECTIONS
BLANKENBAKER STATION II
A PORTION OF LOTS 17, 18, 23 & 24
A PORTION OF TRACT I
LOUISVILLE, KENTUCKY 40299

BANKS
Engineering, Inc.
Site Development/Planning • Water/Wastewater • Surveying
Phone (859) 296-6300 Fax (859) 296-6612
2365 Harrodsburg Road, Ste. B-175 Lexington, Kentucky, 40504