

West Louisville Food Port

CLIENT
SEED CAPITAL KENTUCKY
200 YORK STREET
LOUISVILLE, KY 40203
TEL: 502.588.5505

DESIGN ARCHITECT
OMA+AMO ARCHITECTURE P.C.
180 VANICK STREET, SUITE 1228
NEW YORK, NY 10014
TEL: 212.337.0770 FAX: 212.337.0771

EXECUTIVE ARCHITECT
OSBY ARCHITECTS, INC.
605 WEST MAIN STREET
LOUISVILLE, KY 40202
TEL: 502.583.0700

STRUCTURAL ENGINEER
BENLER, CAMPBELL AND ASSOCIATES, INC.
131 S. THIRD STREET
LOUISVILLE, KY 40208
TEL: 502.538.3569

MEP/FP ENGINEER
CMTA CONSULTING ENGINEERS, INC.
1041 MEETING STREET
PROSPERITY, KY 40059
TEL: 502.326.3085

GEOTECHNICAL ENGINEER
DEM ENGINEERING, INC.
1705 WATKINSON TRAIL
LOUISVILLE, KY 40299
TEL: 502.463.1100 FAX: 502.463.8190

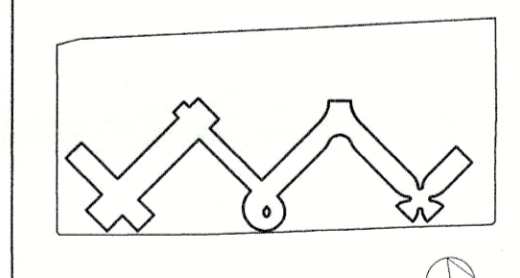
CIVIL ENGINEER
SARAK, WILSON & INGO, INC.
808 SOUTH 3RD STREET
LOUISVILLE, KY 40202
TEL: 502.584.6271 FAX: 502.584.6292

LANDSCAPE ARCHITECT
STOSS LANDSCAPE URBANISM
825 W. BROADWAY #204
BOSTON, MA 02127
TEL: 617.464.1140 FAX: 617.464.1140

LIGHTING DESIGNER
TILLOTSON DESIGN ASSOCIATES
40 WORTH ST, #703
NEW YORK, NY 10013
TEL: 212.675.7760 FAX: 212.675.7826

KITCHEN CONSULTANT
JOBY SMITH & ASSOCIATES
811 S. CHESTERVILLE WEST CHESTER ROAD
WEST CHESTER, OH 40090
TEL: 513.779.7970 FAX: 513.779.7826

NO.	ISSUE DATE	COMMENTS
01	28 JUNE 2015	100% SD



30TH STREET

KEY PLAN

NOT FOR BID
NOT FOR CONSTRUCTION

STAMP

100% SD

STATUS
20010080-01 36"x24" OMA

PROJ. NO. FORMAT OMA
DRAWN BY

1/16"=1'-0" 6/26/2015
SCALE DATE

BAR F - EXTERIOR ELEVATION

DRAWING TITLE

DRAWING NUMBER

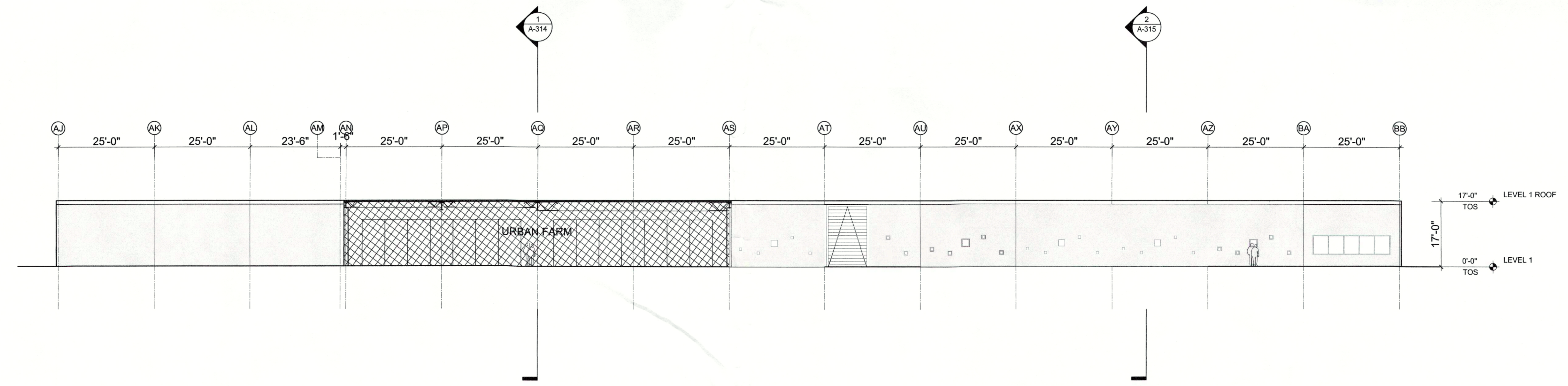
RECEIVED
JUL 13 2015
PLANNING &
DESIGN SERVICES

A215

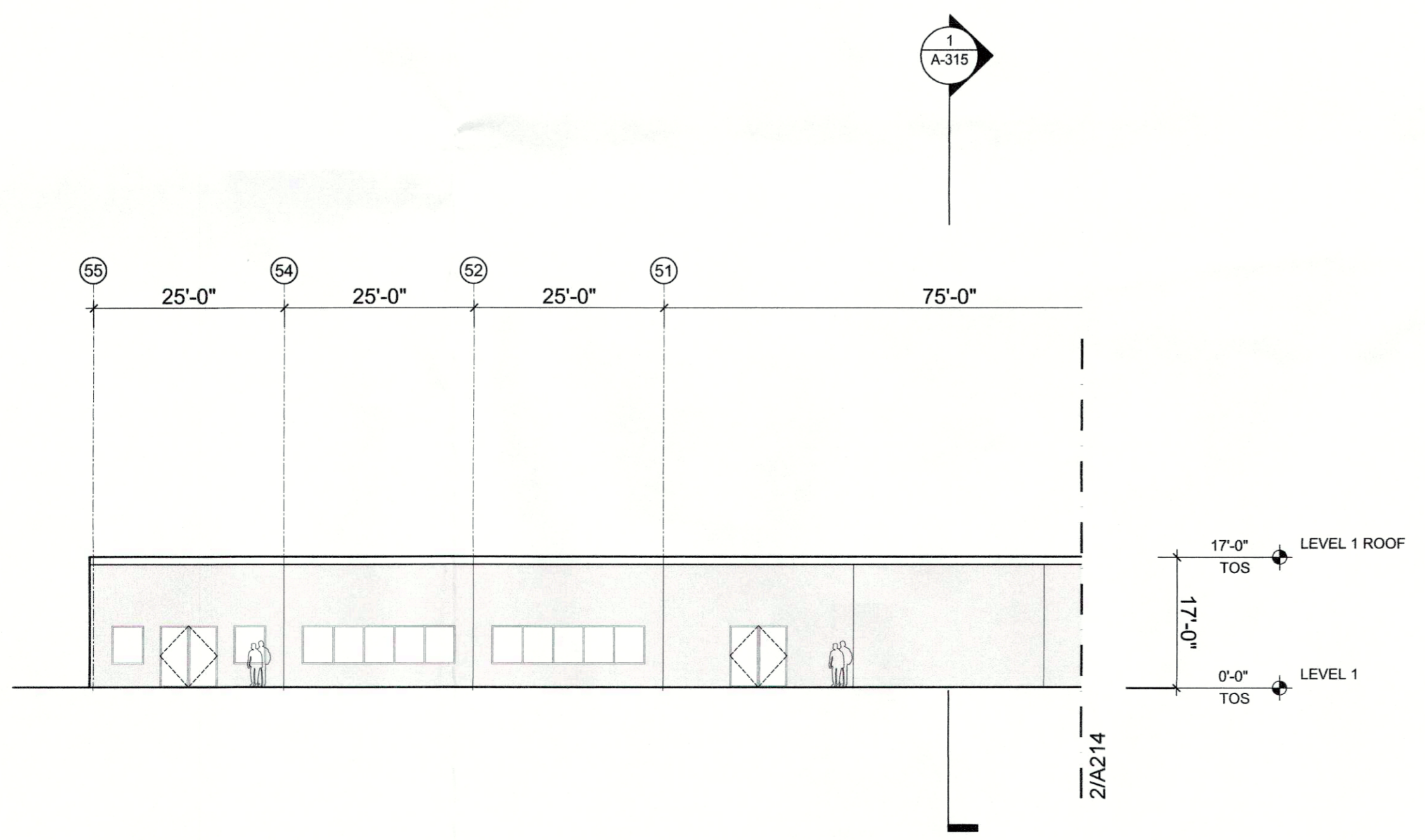
DRAWING NUMBER

LEGEND

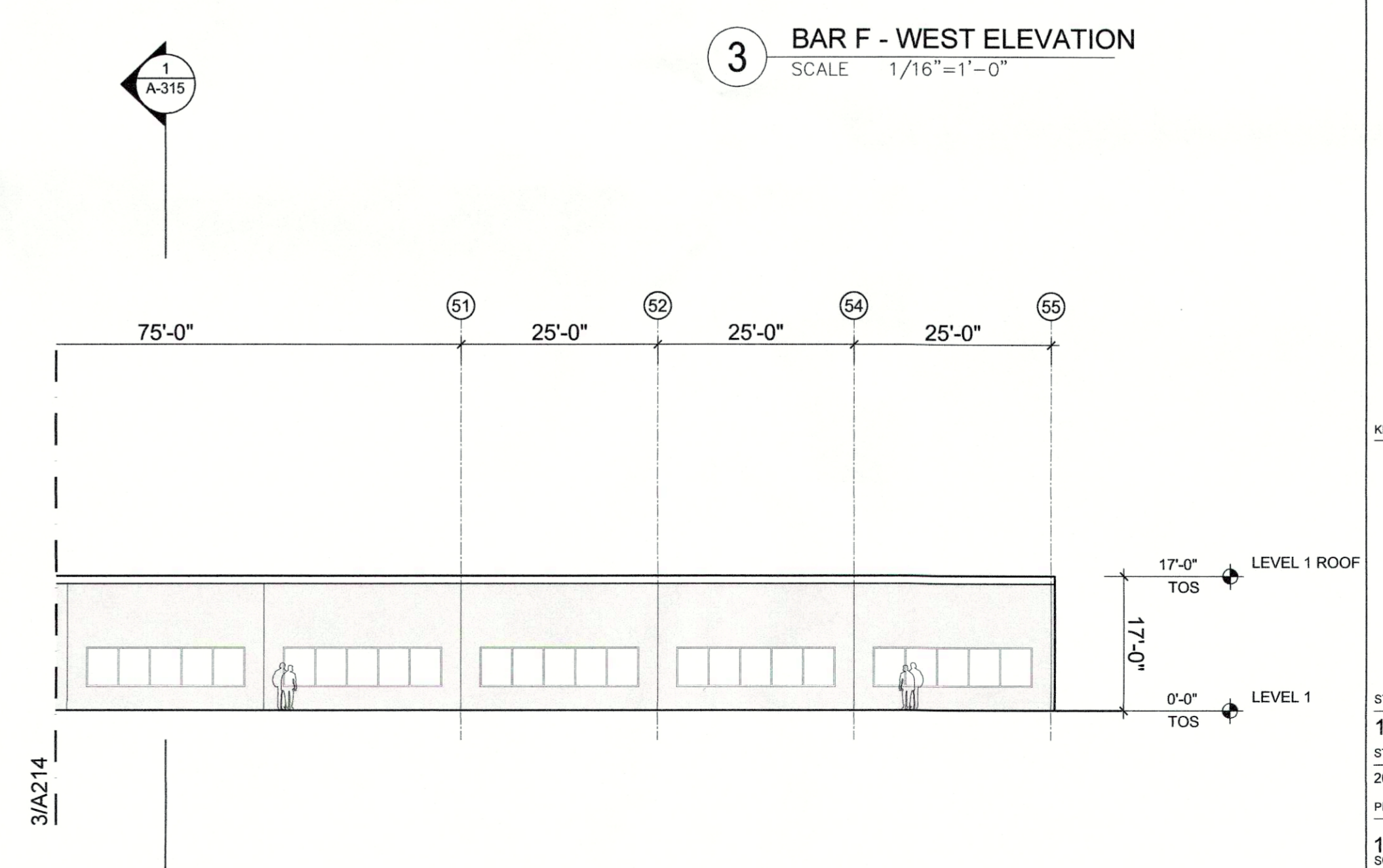
Tilt-up concrete



3 BAR F - WEST ELEVATION
SCALE 1/16"=1'-0"



2 BAR F - NORTH ELEVATION
SCALE 1/16"=1'-0"



1 BAR F - SOUTH ELEVATION
SCALE 1/16"=1'-0"