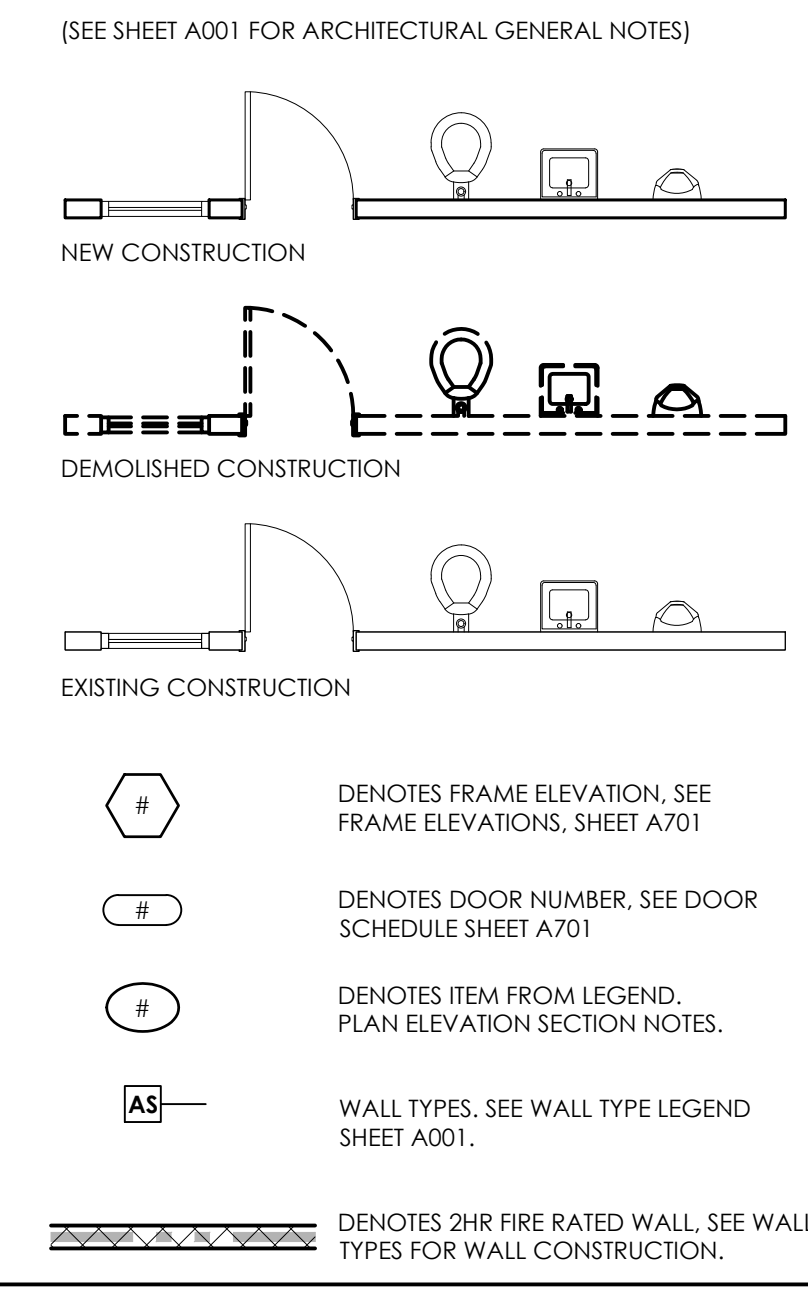


**ARCHITECTURAL KEYS LEGEND**

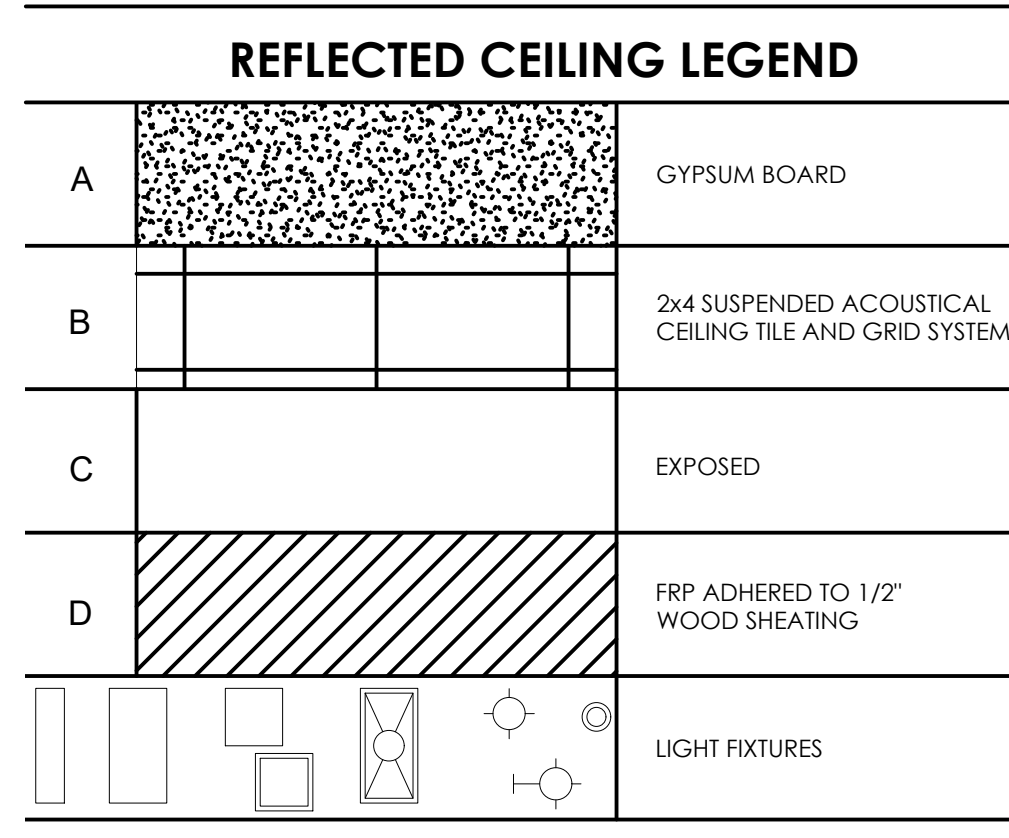


**ARCHITECTURAL KEY NOTES**

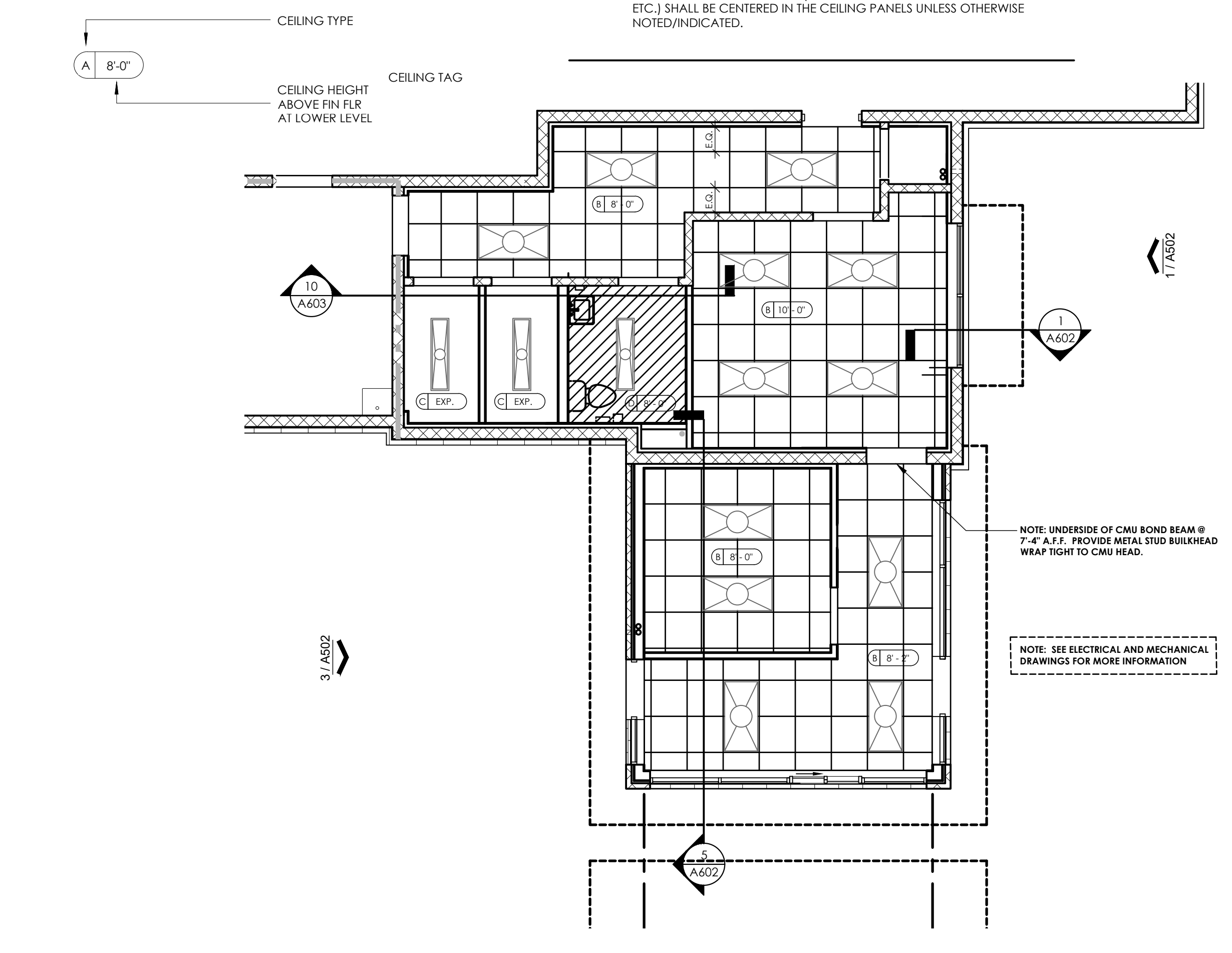
- P.1 CONVEYOR PIT GRATING BY OWNER.
- P.2 ELECTRIC, SELF CONTAINED WATER COOLER BY OWNER.
- P.3 ALIGN FINISHED FACE OF PARTITIONS.
- P.4 1/2" DEEP PLYWOOD SHELVING ON HEAVY DUTY ADJUSTABLE STANDARDS. CONFIRM NUMBER OF SHELVES W/ OWNER.
- P.5 WALL TYPE "T" ABOVE DOOR AND TO ADJACENT WALL.
- P.6 18" GA STAINLESS STEEL CASING OPENING.
- P.7 STAINLESS STEEL BUCKET WELL PROVIDED BY GC.
- P.8 ROOF HATCH AND LADDER. SEE ROOF PLAN AND DETAIL 6/A602.
- P.9 NOT USED.
- P.10 S.S. 3" FILL HEIGHT CORNER GUARD - PROVIDED FOR IN STAINLESS STEEL TRIM PACKAGE.
- P.11 40" x 40" ALUMINUM DRAINABLE SIGHTPROOF LOUVER.
- P.12 WORK BENCH. REFER TO DETAIL 1/A601.
- P.13 SHELF. REFER TO DETAIL 2/A601.
- P.14 A-V. CABINET BY OWNER.
- P.15 SERVICE SINK. PROVIDED AND INSTALLED BY G.C. SEE PLUMBING DRAWINGS.
- P.16 APPLY PAINTED OSB FROM FLOOR TO CEILING ON WALLS AS SHOWN.
- P.17 ROOF DRAIN & OVERFLOW DRAIN FROM ABOVE. SEE ROOF PLAN & PLUMBING DRAWINGS.
- P.18 NOT USED.
- P.19 NOT USED.
- P.20 STAINLESS STEEL CURB FORM AT PERIMETER OF CURB. SEE CIVIL DRAWINGS. PROVIDED & INSTALLED BY G.C.
- P.21 DELETED.
- P.22 GATE PROVIDED & INSTALLED BY OWNER. SEE ELECTRICAL DRAWINGS FOR CONNECTING CONDUIT INFORMATION.
- P.23 XPT PROVIDED & INSTALLED BY OWNER. SEE ELECTRICAL DRAWINGS FOR CONNECTING CONDUIT INFORMATION. COORDINATE W/ OWNER INSTALLED VS FUTURE INSTALLATION LOCATIONS. PROVIDE JUNCTION BOXES AT FUTURE LOCATIONS.
- P.24 FAST PASS PROVIDED & INSTALLED BY OWNER. SEE ELECTRICAL DRAWINGS FOR CONNECTING CONDUIT INFORMATION. COORDINATE W/ OWNER INSTALLED VS FUTURE INSTALLATION LOCATIONS. PROVIDE JUNCTION BOXES AT FUTURE LOCATIONS.
- P.25 NOT USED.
- P.26 NOT USED.
- P.27 SHADED AREA INDICATES VAPOR BARRIER BELOW FLOOR SLAB (AT OFFICE AREA ONLY) - 0.3 PERMS PERMEANCE, 2200 GRAMS PUNCTURE RESISTANCE, 45 LBF/IN TENSILE STRENGTH - 10 MIL. MIN.
- P.28 BASE CABINETS. SEE DETAIL 3/A601 (SIM) FOR DETAILS.
- P.29 10" LONG S.S. SLOT DRAIN w/ CATCH BASIN DRAINING TO WASH PIT. SEE PLUMBING DRAWINGS.
- P.30 NOT USED.
- P.31 S.S. SLOT DRAIN. SEE CIVIL DRAWINGS.
- P.32 NOT USED.
- P.33 NOT USED.
- P.34 NOT USED.
- P.35 SECURITY PANEL ACCESS. SEE ELECTRICAL DRAWINGS.
- P.36 STAND ALONE DRIVE UP CANOPY - PROVIDED AND DESIGNED BY SUPERIOR CANOPIES. CONC FOUNDATION PROVIDED BY G.C. GENERAL CONTRACTOR SHALL SUBMIT FINAL CANOPY SHOP DRAWINGS, SIGNED & SEALED BY A REGISTERED PROFESSIONAL ENGINEER, TO THE BUILDING DEPARTMENT FOR REVIEW AND APPROVAL PRIOR TO BEGINNING CONSTRUCTION OF CANOPY.
- P.37 NOT USED.
- P.38 NOT USED.
- P.39 NOT USED.
- P.40 KNOX BOX - BASIS OF DESIGN: KNOX BOX MODEL NUMBER 3200. RECESSED - DARK BRONZE. COORDINATE & CONFIRM TYPE, MODEL, AND LOCATION w/ LOCAL FIRE DEPARTMENT / JURISDICTION.
- P.41 PROVIDE COMPLETE STAINLESS WRAP (HEAD & JAMBS) AT CASING OPENING. SEE DOOR SCHEDULE.
- P.42 STAND ALONE DRIVE UP FOUNDATION - DESIGNED BY SUPERIOR CANOPIES. PROVIDED BY G.C.

**K|B|A**  
 K|B|A INCORPORATED  
 ARCHITECTS  
 P (513) 752-7800  
 F (513) 752-7833  
 29 High Street  
 Millersville, Ohio 45150  
 www.KBAinc.com  
 © KBA 2022. All Rights Reserved.

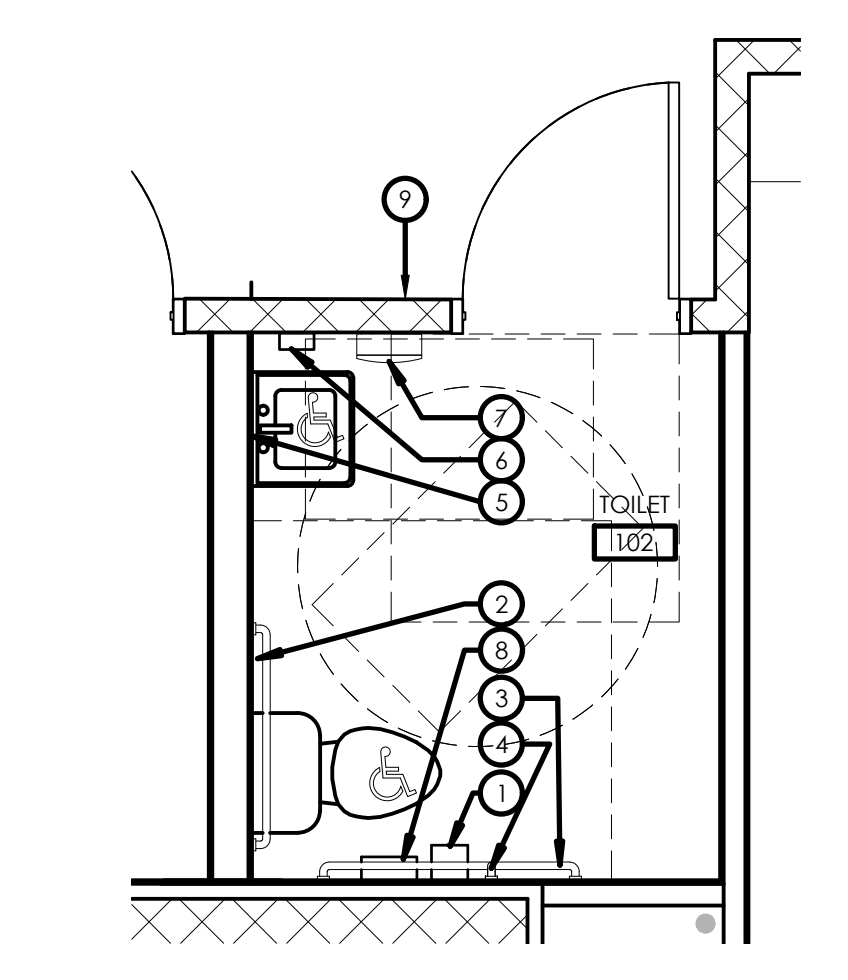
**SHEET CONTENTS:**  
 FLOOR PLAN  
 CEILING PLAN



- REFLECTED CEILING NOTES**
- A. REFER TO REFLECTED CEILING PLAN FOR ADDITIONAL NOTES AND CEILING INFORMATION.
  - B. PROVIDE CONTROL JOINTS IN PLASTER & GYPSUM BOARD CEILINGS AND BULKHEADS WHERE RECOMMENDED/REQUIRED BY MANUFACTURERS OR INDUSTRY STANDARDS, OR WHERE INDICATED. COORDINATE LOCATION WITH ARCHITECT.
  - C. ALL CEILING HEIGHTS ARE FROM FINISHED FLOOR.
  - D. INSTALL SUSPENDED CEILING GRID WITH EQUAL SIZE PANELS AT EACH SIDE OR END OF THE INDIVIDUAL SPACES UNLESS OTHERWISE INDICATED. NO PANEL SHALL BE LESS THAN 4" WIDE.
  - E. THE ARCHITECTURAL REFLECTED CEILING PLAN SHALL GOVERN THE LAYOUT OF ALL CEILING ELEMENTS AND/OR PENETRATIONS. COORDINATE ANY FIELD VERIFIED OR AS-BUILT CONDITIONS THAT DIFFER FROM WHAT IS SHOWN ON THESE PLANS WITH THE ARCHITECT.
  - F. SIZES AND SHAPES OF LIGHTING FIXTURES AND OTHER MISCELLANEOUS ELECTRICAL EQUIPMENT (IF SHOWN) ARE FOR REFERENCE ONLY. COORDINATE ACTUAL SIZES AND TYPES WITH THE ELECTRICAL DRAWINGS/ENGINEER.
  - G. COORDINATE CLEARANCES WITH M.E.P. DRAWINGS. NOTIFY ARCHITECT OF CONFLICTS PRIOR TO CONSTRUCTION.
  - H. SIZES OF MECHANICAL EQUIPMENT (IF SHOWN) ARE FOR REFERENCE ONLY. COORDINATE ACTUAL SIZES AND TYPES WITH MECHANICAL DRAWINGS/ENGINEER.
  - I. ALL CEILING MOUNTED ITEMS (SPRINKLER HEADS, MOUNTING MECHANISMS, ETC.) SHALL BE CENTERED IN THE CEILING PANELS UNLESS OTHERWISE NOTED/INDICATED.



**1 FIRST FLOOR PLAN**  
 3/16" = 1'-0"



**2 ENLARGED RESTROOM PLAN**  
 3/8" = 1'-0"

ACCESSORY SCHEDULE				
MARK	ITEM	PROVIDED BY	INSTALLED BY	COMMENTS
1	SURFACE MOUNTED TOILET PAPER HOLDER	OWNER	CONTRACTOR	REFER TO ANTHROPOMORPHIC LEGEND FOR MOUNTING HEIGHTS
2	GRAB BAR 36"	G.C.	CONTRACTOR	REFER TO ANTHROPOMORPHIC LEGEND FOR MOUNTING HEIGHTS
3	GRAB BAR 42"	G.C.	CONTRACTOR	REFER TO ANTHROPOMORPHIC LEGEND FOR MOUNTING HEIGHTS
4	GRAB BAR 18"	G.C.	CONTRACTOR	REFER TO ANTHROPOMORPHIC LEGEND FOR MOUNTING HEIGHTS
5	SURFACE MOUNTED MIRROR / MEDICINE CABINET 24x30" (GRANGER #14C568)	OWNER	CONTRACTOR	REFER TO ANTHROPOMORPHIC LEGEND FOR MOUNTING HEIGHTS
6	SURFACE MOUNTED SOAP DISPENSER	OWNER	CONTRACTOR	REFER TO ANTHROPOMORPHIC LEGEND FOR MOUNTING HEIGHTS
7	SURFACE MOUNTED PAPER TOWEL DISPENSER	OWNER	CONTRACTOR	REFER TO ANTHROPOMORPHIC LEGEND FOR MOUNTING HEIGHTS
8	SANITARY NAPKIN DISPOSAL - SURFACE MOUNTED	OWNER	CONTRACTOR	REFER TO ANTHROPOMORPHIC LEGEND FOR MOUNTING HEIGHTS
9	RESTROOM SIGNAGE PLACARD	G.C.	CONTRACTOR	REFER TO ANTHROPOMORPHIC LEGEND FOR MOUNTING HEIGHTS

PRELIMINARY PLOT  
 05/24/22

**3 FIRST FLOOR - REFLECTED CEILING PLAN**  
 1/4" = 1'-0"

Received June 6, 2022

Planning & Design Services

Proposed New Building:  
**MIKE'S CARWASH**  
 10511 Preston Highway  
 Louisville, KY

REV. DATE CK'D

Drawn By: Checked:MDB

Preliminary  
 Not For  
 Construction

Date: 05/24/22 Job No: 21.170

**A101**  
 of:

22-DDP-0054

**ELEVATION KEY NOTES**

(NOTE: NOT ALL KEYNOTES APPLY TO THIS SHEET)

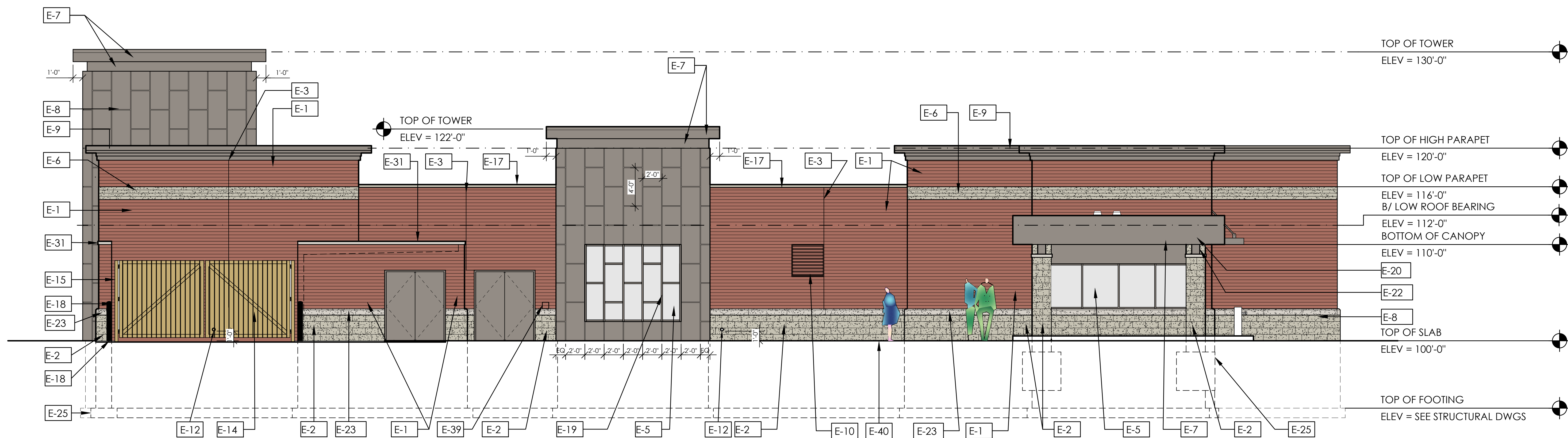
- E-1. LEE MAXBRIC (4' H x 16' L); MANCHESTER SMOOTH (WITH BRIMMENT C3) TERRAZZOTA MORTAR COLOR - NO SUBSTITUTIONS WILL BE ACCEPTED
- E-2. LEE MAXBLOC (8' H x 16' L); LIGHT RANGE BUFF SPLIT FACE (WITH BRIMMENT B100 TAN MORTAR COLOR - NO SUBSTITUTIONS WILL BE ACCEPTED)
- E-3. MASONRY CONTROL JOINT
- E-4. ARCHITECTURAL PRE-FABRICATED ALUMINUM CANOPY - COLOR TO MATCH; DRI-DESIGN CHAMPAGNE DRI-028. SEE CORRESPONDING DETAILS.
- E-5. KAWNEER ENCORE STOREFRONT SYSTEM - FINISH #18 CHAMPAGNE
- E-6. LEE MAXBLOC (4' H x 16' L); LIGHT RANGE BUFF SPLIT FACE (WITH BRIMMENT B100 TAN MORTAR COLOR - NO SUBSTITUTIONS WILL BE ACCEPTED)
- E-7... OSO ALUMINUM BREAK METAL OVER EXTERIOR GRADE PLYWOOD, FINISH: KYNAR 70% 2-COAT, COLOR: DRI-DESIGN CHAMPAGNE DRI-028

- E-8. DRI-DESIGN ARCHITECTURAL ALUMINUM WALL PANEL - VERTICAL RUNNING BOND PATTERN, 2'-0" x 4'-0" TYPICAL PANEL SIZE, FINISH: KYNAR 70% 2-COAT, COLOR: DRI-DESIGN CHAMPAGNE DRI-028
- E-9. PREFORMED METAL CORNICE FASCIA/COPING, REFER TO DETAIL 21/A01. FINISH: KYNAR 70% 2-COAT, COLOR: DRI-DESIGN CHAMPAGNE DRI-028
- E-10. 40" x 40" ALUMINUM DRAINABLE SIGHTPROOF LOUVER, WITH INSECT SCREEN - FINISH: KYNAR 70% 2 COAT, COLOR: TBD AS SELECTED BY ARCHITECT BY MFR'S PREMIUM FULL RANGE OF COLORS, COLOR TO MATCH BRICK COLOR.
- E-11. NOT USED.
- E-12. ROOF OVERFLOW DRAIN w/ DECORATIVE OUTLET, SEE PLUMBING DWGS.
- E-13. NOT USED.
- E-14. GATE: REFER TO DETAIL ON SHEET A701.

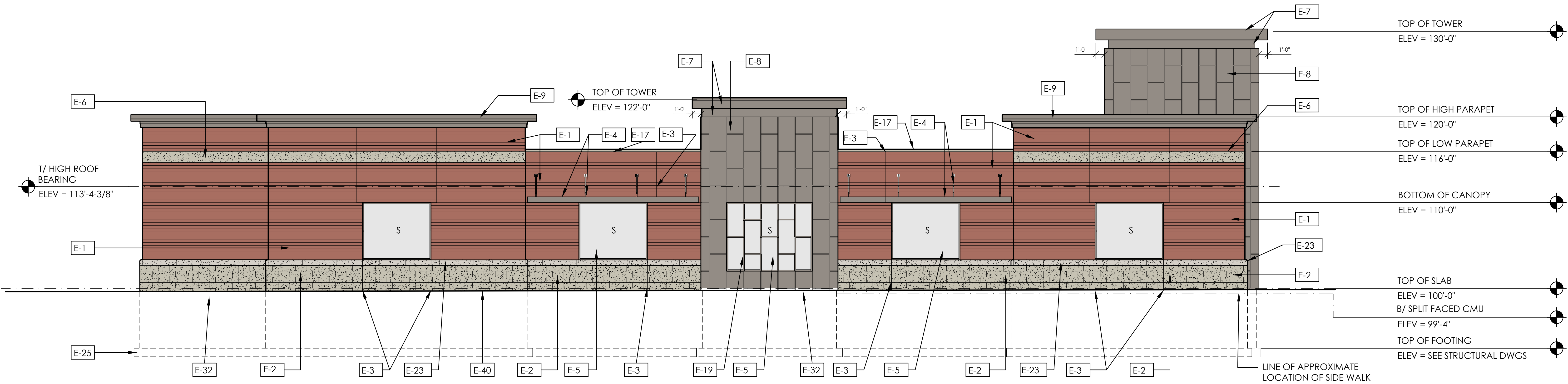
- E-16. GATE PROVIDED & INSTALLED BY OWNER. SEE ELECTRICAL DRAWINGS FOR CONNECTING CONDUIT INFORMATION.
- E-17. PREFORMED METAL COPING - FINISH: KYNAR 70% 2 - COAT, COLOR: DRI-DESIGN CHAMPAGNE DRI-028
- E-18. 4" CONCRETE FILLED STEEL BOLLARD WITH PLASTIC COVER, SEE 6/A801.
- E-19. STOREFRONT / CURTAINWALL MULLION TO ALIGN WITH DRI-DESIGN PANEL JOINT IN SAME RUNNING BOND PATTERN (TYP.)
- E-20. CASHIER CANOPY STRUCTURAL SUPPORT AND FASCIA, PROVIDED BY OTHERS, COORDINATE WITH OWNER, FINISH: KYNAR 70% 2-COAT, COLOR: DRI-DESIGN CHAMPAGNE DRI-028
- E-21. NOT USED.
- E-22. TUBE STEEL COLUMN - FINISH TO MATCH CANOPY FASCIA WITH INDUSTRIAL ENAMEL PAINT AND PRIMER
- E-23. (8" H x 48" L) STONE SILL/WATER TABLE, CUSTOM CAST STONE; LIGHT BUFF, (WITH BRIMMENT C-105 TYPE N MORTAR COLOR - NO SUBSTITUTIONS WILL BE ACCEPTED).
- E-24. NOT USED.

- E-25. CONC. FOUNDATION, SEE STRUCTURAL DWGS.
- E-26. DELETED
- E-27. NOT USED.
- E-28. NOT USED.
- E-29. NOT USED.
- E-30. NOT USED.
- E-31. (4' H x 48" L) CAST STONE PARAPET CAP / COPING, CUSTOM CAST STONE; LIGHT BUFF (WITH BRIMMENT C-105 TYPE N MORTAR COLOR - NO SUBSTITUTIONS WILL BE ACCEPTED).
- E-32. METAL PANEL INSTALLER SHALL COORDINATE BOTTOM OF METAL PANELS w/ FINISHED GRADE.
- E-33. NOT USED.
- E-34. NOT USED.
- E-35. CASHIER CANOPY CONCRETE FOUNDATION, DESIGNED BY CANOPY PROVIDER, INSTALLED BY G.C.

- E-36. NOT USED.
- E-37. NOT USED.
- E-38. NOT USED.
- E-39. KNOX BOX, SEE FLOOR PLAN.
- E-40. PROVIDE SPLIT FACED CMU @ ALL SPLIT FACED CMU LOCATIONS TO ONE COURSE BELOW TUNNEL FINISHED FLOOR SLAB ELEVATION. PROVIDE EXPANSION MATERIAL AT PERIMETER OF SLAB. (TYPICAL).
- E-41. NOT USED.



**1 SOUTH**  
3/16" = 1'-0"

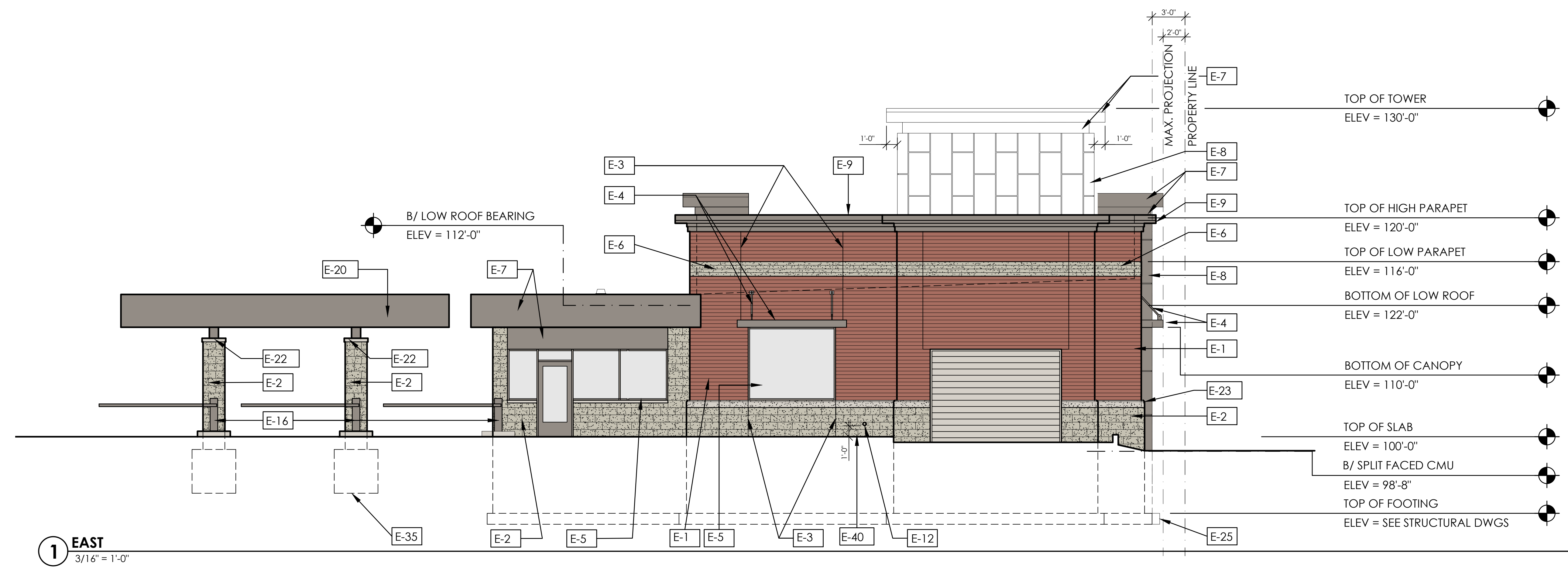


**2 NORTH**  
3/16" = 1'-0"

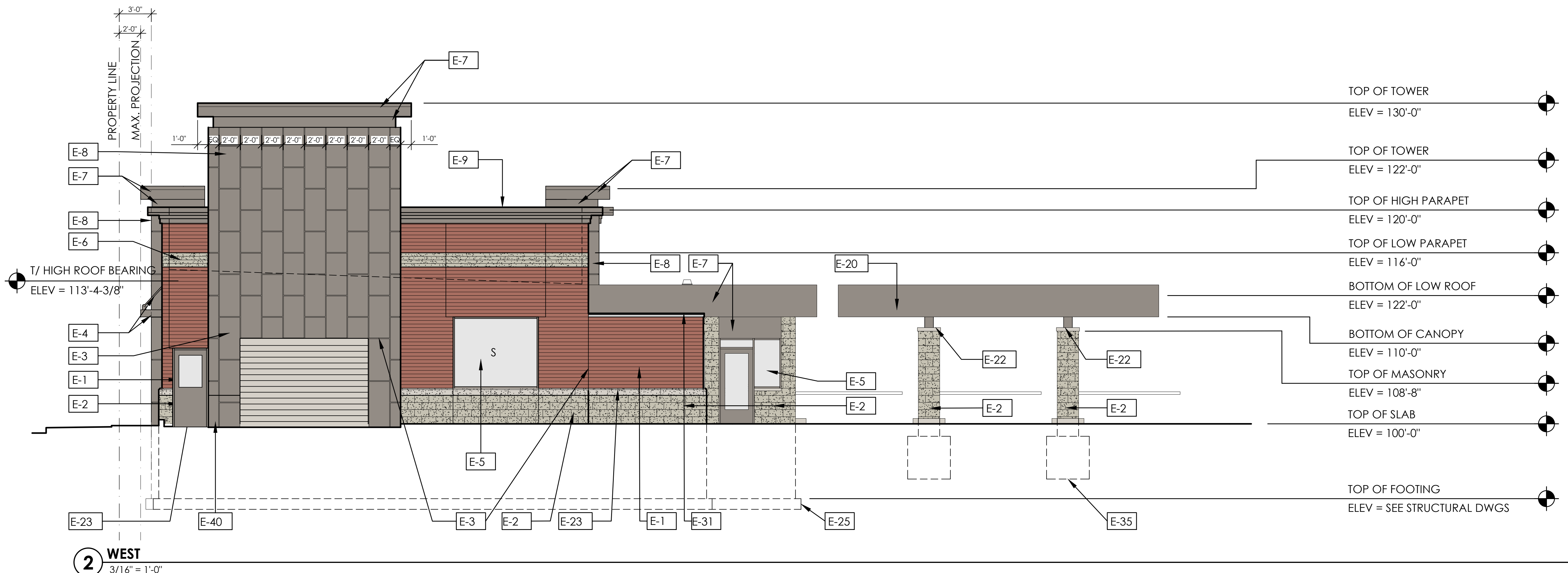
**ELEVATION KEY NOTES**

(NOTE: NOT ALL KEYNOTES APPLY TO THIS SHEET)

- E-1.. LEE MAXBRIC (4" H X 16" L); MANCHESTER SMOOTH (WITH BRIXMENT C-31 TERRACOTTA MORTAR COLOR - NO SUBSTITUTIONS WILL BE ACCEPTED)
- E-2.. LEE MAXBLOC (8" H X 16" L); LIGHT RANGE BUFF SPLIT FACE (WITH BRIXMENT 8100 TAN MORTAR COLOR - NO SUBSTITUTIONS WILL BE ACCEPTED)
- E-3.. MASONRY CONTROL JOINT
- E-4.. ARCHITECTURAL PRE-FABRICATED ALUMINUM CANOPY - COLOR TO MATCH DRI-DESIGN CHAMPAGNE DRI-028. SEE CORRESPONDING DETAILS.
- E-5.. KAWNEER ENCORE STOREFRONT SYSTEM - FINISH #18 CHAMPAGNE
- E-6.. LEE MAXBLOC (4" H X 16" L); LIGHT RANGE BUFF SPLIT FACE (WITH BRIXMENT 8100 TAN MORTAR COLOR - NO SUBSTITUTIONS WILL BE ACCEPTED)
- E-7.. .050 ALUMINUM BREAK METAL OVER EXTERIOR GRADE PLYWOOD, FINISH: KYNAR 70% 2-COAT, COLOR: DRI-DESIGN CHAMPAGNE DRI-028
- E-8.. DRI-DESIGN ARCHITECTURAL ALUMINUM WALL PANEL - VERTICAL RUNNING BOND PATTERN, 2'-0" X 4'-0" TYPICAL PANEL SIZE, FINISH: KYNAR 70% 2-COAT, COLOR: DRI-DESIGN CHAMPAGNE DRI-028
- E-9.. PREFORMED METAL CORNICE FASCIA/COPING, REFER TO DETAIL 2/A601, FINISH: KYNAR 70% 2-COAT, COLOR: DRI-DESIGN CHAMPAGNE DRI-028.
- E-10.. 40" X 40" ALUMINUM DRAINABLE SIGHTPROOF LOUVER, WITH INSECT SCREEN - FINISH: KYNAR 70% 2 COAT, COLOR: TBD AS SELECTED BY ARCHITECT BY MFR'S PREMIUM FULL RANGE OF COLORS, COLOR TO MATCH BRICK COLOR.
- E-11.. NOT USED.
- E-12.. ROOF OVERFLOW DRAIN W/ DECORATIVE OUTLET, SEE PLUMBING DWGS.
- E-13.. NOT USED.
- E-14.. GATE: REFER TO DETAIL ON SHEET A701.
- E-15.. MIN. 4" GALVANIZED STEEL POST WITH 2'-0" DEEP POST SET IN 12" DIA. X 3'-6" DEEP CONCRETE FOUNDATION WITH GATE HINGES
- E-16.. GATE PROVIDED & INSTALLED BY OWNER. SEE ELECTRICAL DRAWINGS FOR CONNECTING CONDUIT INFORMATION.
- E-17.. PREFORMED METAL COPING - FINISH: KYNAR 70% 2 - COAT, COLOR: DRI-DESIGN CHAMPAGNE DRI-028
- E-18.. 4" CONCRETE FILLED STEEL BOLLARD WITH PLASTIC COVER, SEE 4/A801.
- E-19.. STOREFRONT / CURTAINWALL MULLION TO ALIGN WITH DRI-DESSING PANEL JOINT IN SAME RUNNING BOND PATTERN (TYP.)
- E-20.. CASHIER CANOPY STRUCTURAL SUPPORT AND FASCIA, PROVIDED BY OTHERS, COORDINATE WITH OWNER, FINISH: KYNAR 70% 2-COAT, COLOR: DRI-DESIGN CHAMPAGNE DRI-028
- E-21.. NOT USED.
- E-22.. TUBE STEEL COLUMN - FINISH TO MATCH CANOPY FASCIA WITH INDUSTRIAL ENAMEL PAINT AND PRIMER
- E-23.. (8" H X 48" L) STONE SILL/WATER TABLE, CUSTOM CAST STONE: LIGHT BUFF. (WITH BRIXMENT C-105 TYPE N MORTAR COLOR - NO SUBSTITUTIONS WILL BE ACCEPTED).
- E-24.. NOT USED.
- E-25.. CONC. FOUNDATION, SEE STRUCTURAL DWGS.
- E-26.. DELETED
- E-27.. NOT USED.
- E-28.. NOT USED.
- E-29.. NOT USED.
- E-30.. NOT USED.
- E-31.. (4" H X 48" L) CAST STONE PARAPET CAP / COPING, CUSTOM CAST STONE: LIGHT BUFF (WITH BRIXMENT C-105 TYPE N MORTAR COLOR - NO SUBSTITUTIONS WILL BE ACCEPTED).
- E-32.. METAL PANEL INSTALLER SHALL COORDINATE BOTTOM OF METAL PANELS W/ FINISHED GRADE.
- E-33.. NOT USED.
- E-34.. NOT USED.
- E-35.. CASHIER CANOPY CONCRETE FOUNDATION, DESIGNED BY CANOPY PROVIDER, INSTALLED BY G.C.
- E-36.. NOT USED.
- E-37.. NOT USED.
- E-38.. NOT USED.
- E-39.. KNOX BOX, SEE FLOOR PLAN.
- E-40.. PROVIDE SPLIT FACED CMU @ ALL SPLIT FACED CMU LOCATIONS TO ONE COURSE BELOW TUNNEL FINISHED FLOOR SLAB ELEVATION, PROVIDE EXPANSION MATERIAL AT PERIMETER OF SLAB. (TYPICAL).
- E-41.. NOT USED.



**1 EAST**  
3/16" = 1'-0"



**2 WEST**  
3/16" = 1'-0"

**K|B|A**  
KBA INCORPORATED  
ARCHITECTS  
P (513) 752-7800  
F (513) 752-7833  
29 High Street  
Middletown, Ohio 45150  
www.KBAinc.com  
© KBA 2022 All Rights Reserved

**SHEET CONTENTS:**  
EXTERIOR ELEVATIONS

**Proposed New Building:**  
**MIKE'S CARWASH**  
10511 Preston Highway  
Louisville, KY

REV. DATE CK'D

Drawn By: Checked:MDB

Preliminary  
Not For  
Construction

Date: 05/24/22 Job No: 21.170

**A502**  
of:

PRELIMINARY PLOT  
05/24/22