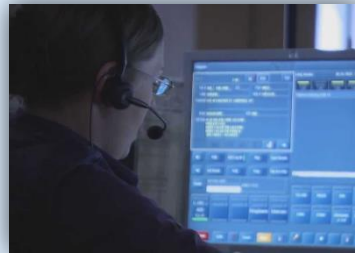




Emergency Services

Presentation to Metro Council
Public Safety Committee, cont.

5/17/2017





Emergency Medical Services

Emergency Medical Services (EMS) provides emergency medical care 24/7/365 throughout the Louisville Metro area. EMS is committed to the development of the latest advances in basic and advanced life support patient care.

- 2016 Quick Facts
 - 124,443 calls for service
 - 84,186 transports
 - Mission: Lifeline Gold Award Recipient from the American Heart Association (AHA)
 - CPR Center was awarded National Status by the AHA

Top 10 Chief Complaints for EMS	Event Type	2016 CFS Count
	Sick	11,636
	Fall	11,418
	Breathing Problems	10,907
	Unknown Problems	10,396
	Transfer/Interfacility	9,099
	Chest Pain	9,043
	Motor Vehicle Accident	8,446
	Overdose	6,879
	Fainting/Unconscious	6,074
Convulsions	4,849	



Personnel

- New collective bargaining agreement secured in 2016 has helped recruiting and retention efforts
- EMT Class
- Paramedic Class



New EMTs with Metro EMS hit the streets, already making an impact



Louisville Metro EMS investing in more paramedics with its own class this summer



New Trucks





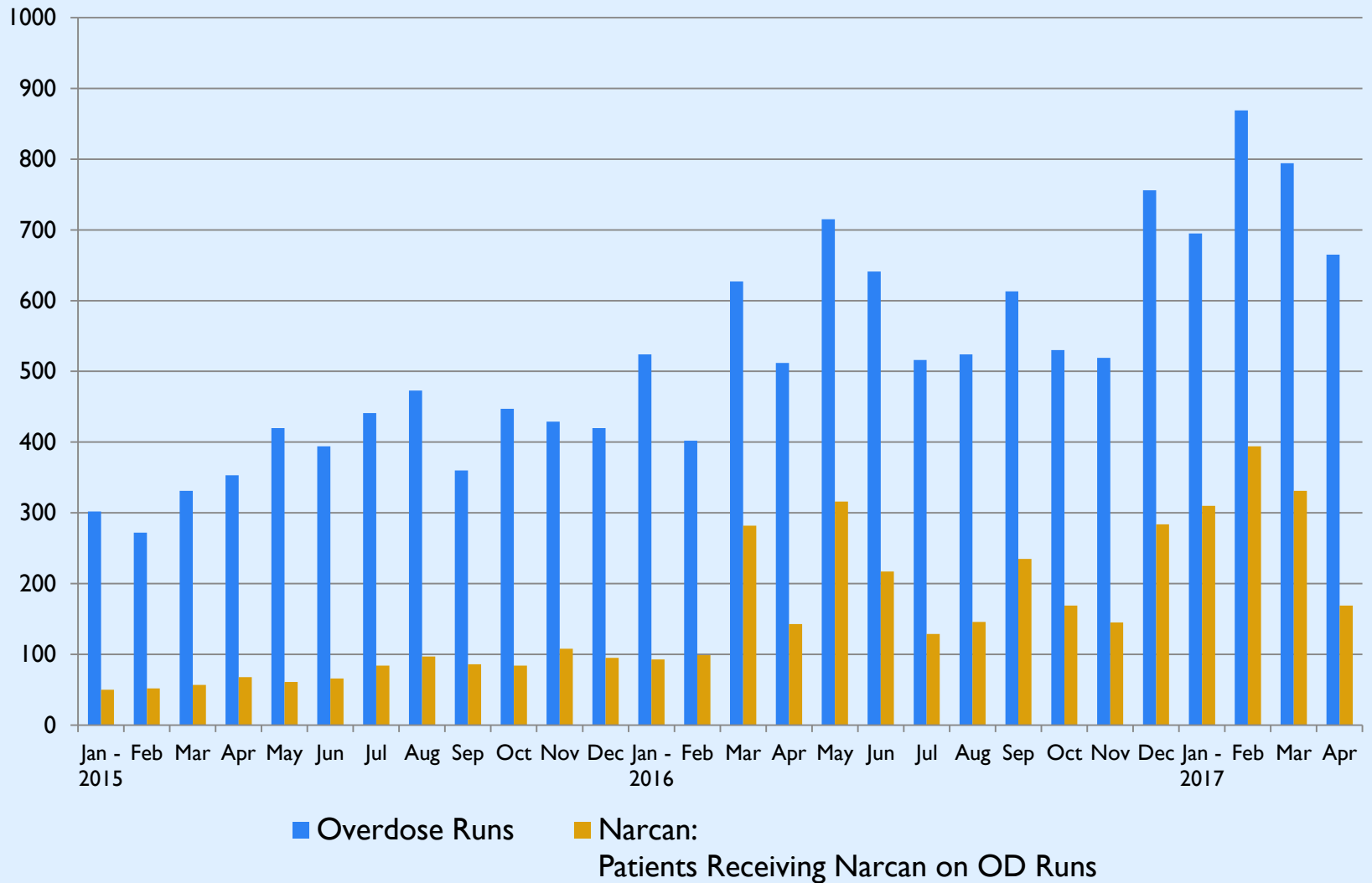
KDF Mini-Marathon Save





Overdose Epidemic

Overdoses





Questions?



Like us on Facebook – **@LouMetroES**



Follow us on Twitter – **@LouMetroES** and
@LouMetro311

