

Board of Zoning Adjustment
Staff Report
December 3, 2018



Case No:	18CUP1132
Project Name:	Christian Assembly Church
Location:	9020 Stonestreet Road
Owner/Applicant :	Christian Assembly Church
Representative:	BlueStone Engineers, PLC, Chris Crumpton
Jurisdiction:	Louisville Metro
Council District:	#25 – David Yates
Case Manager:	Steve Hendrix, Planning & Design Coordinator

REQUEST:

Conditional Use Permit to allow a Private Institutional Use in a Single Family Zoning District, Land Development Code 4.2.65 (existing multi-purpose building to be used for overnight sleeping rooms for church usage only).

The 68 acre Christian Assembly Church campus is located just southeast of the Stonestreet Road/ Dixie Highway intersection. The church is requesting to use most of an existing 35,274 square foot multi-purpose building for overnight sleeping rooms when retreats or conferences are held and possibly during Easter and Christmas, which would be approximately up to six times a year.

CASE SUMMARY/BACKGROUND

The property has zoning classifications of R-4, R-5, R-6 and R-7 Single Family Residential and Multi-Family Residential within a Neighborhood Form District. This particular portion is within the R-5 District. A schematic floor plan shows 12 bedrooms, 2 efficiency units and 40 beds in a dormitory style arrangement on the first floor and 13 bedrooms, 2 efficiencies and 50 beds in a dormitory style arrangement on the second floor for a total of 25 bedrooms, 4 efficiencies and 90 sleeping beds being in the dormitory arrangement. The floor plans are subject to change due to building codes and fire department approval, but does reveal the type of proposed sleeping arrangements. Transportation and MSD have stamped preliminary approval.

STAFF FINDING / RECOMMENDATION

There are 5 listed requirements and all have been met.

The proposal meets the requirements of the Land Development Code and guidelines of the Comprehensive Plan.

Based upon the information in the staff report, the testimony and evidence provided at the public hearing, the Board of Zoning Adjustment must determine if the proposal meets the standards for

RELATED CASES

9-51-82, change in zoning from R-5 Residential to R-6, on a portion of the property to allow recreational vehicle parking for church use only. Approved by the Planning Commission on October 21, 1982.

B-10-83, Conditional Use Permit to allow a mobile home park for recreational vehicles. Approved by the Board of Zoning Adjustment on February 21, 1983.

TECHNICAL REVIEW

None

INTERESTED PARTY COMMENTS

A neighborhood meeting was held on October 10, 2018.
No one showed up for the meeting.

STANDARD OF REVIEW AND STAFF ANALYSIS FOR CONDITIONAL USE PERMIT

1. Is the proposal consistent with applicable policies of the Comprehensive Plan?

STAFF: The proposal is consistent with the applicable policies of the Comprehensive Plan, since the sleeping rooms will be a function of the church and used for only church guests.

2. Is the proposal compatible with surrounding land uses and the general character of the area including factors such as height, bulk, scale, intensity, traffic, noise, odor, drainage, dust, lighting and appearance?

STAFF: The proposal is compatible with the surrounding land uses and the general character of the area since the sleeping rooms will be within an existing building on the church campus and part of the service provided by the church.

3. Are necessary on-site and off-site public facilities such as transportation, sanitation, water, sewer, drainage, emergency services, education and recreation adequate to serve the proposed use?

STAFF: Transportation Planning and MSD have given preliminary approval. The site is within the Pleasure Ridge Park Fire Protection District.

4. Does the proposal comply with the following specific standards required to obtain the conditional use permit requested?

Private institutional uses, except for such uses specifically regulated elsewhere in this LDC, may be allowed in the R-R, R-E, R-1, R-2, R-3, R-4, R-5, and U-N zoning districts upon the granting of a Conditional Use Permit and compliance with the listed requirements:

A. Except in the R-R zoning district, all structures, except fencing, and all off-street parking shall be at least 30 feet from any property line adjacent to an existing residential use or residential zoning district. In the R-R zoning district all structures, except fencing, shall be at least 150 feet from any property line and all off-street parking shall be at least 30 feet from any property line.

B. The applicant must demonstrate that the impact of the traffic generated by the use can be mitigated.

C. Off-street parking not located within a driveway shall be located to the side or rear of the building(s). The number of required off-street parking spaces shall be determined by the Planning Director in consultation with the Director of Public Works based on the standards for the closest comparable use and on the particular parking demand and trip generation characteristics of the proposed use.

D. All activities shall be in compliance with the Metro Noise Ordinance (LMCO Chapter 99).

E. The Board of Zoning Adjustment may set hours of operation for the institutional use in order to minimize potential negative impacts on surrounding residential properties.

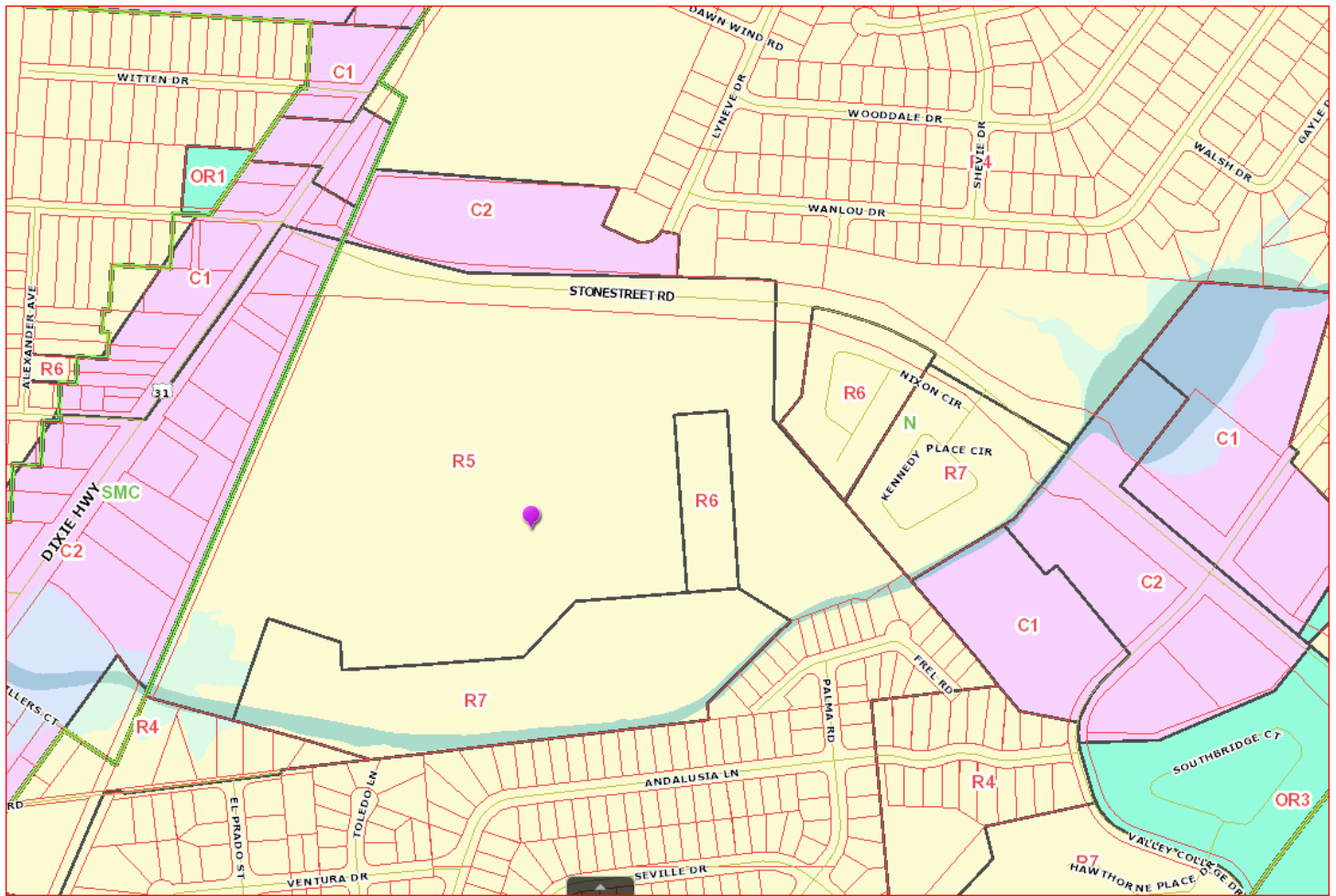
NOTIFICATION

Date	Purpose of Notice	Recipients
11/15/2108 11/19/2018	Hearing before BOZA	1 st and 2 nd tier adjoining property owners Registered Neighborhood Groups in Council District 25
11/16/2018	Hearing before BOZA	Sign Posting

ATTACHMENTS

1. Zoning Map
2. Aerial Photograph
3. Cornerstone 2020 Checklist
4. Conditions of Approval
5. Site Plan
6. Elevations/Floor Plan

Zoning Map



Aerial Map



- + Exceeds Guideline
- ✓ Meets Guideline
- Does Not Meet Guideline
- +/- More Information Needed
- NA Not Applicable

Neighborhood: Non-Residential

#	Cornerstone 2020 Plan Element	Plan Element or Portion of Plan Element	Staff Finding	Staff Analysis
1	Community Form/Land Use Guideline 1: Community Form	B.3: The proposal is a neighborhood center with a mixture of uses such as offices, retail shops, restaurants and services at a scale that is appropriate for nearby neighborhoods.	NA	
2	Community Form/Land Use Guideline 1: Community Form	B.3: If the proposal is high intensity, it is located on a major or minor arterial or an area with limited impact on low to moderate intensity residential uses.	✓	Stonestreet Road is a Minor Arterial.
3	Community Form/Land Use Guideline 2: Centers	A.1/7: The proposal, which will create a new center, is located in the Neighborhood Form District, and includes new construction or the reuse of existing buildings to provide commercial, office and/or residential use.	NA	Proposed sleeping rooms in an existing building in a Neighborhood Form District for church use only, but not a center
4	Community Form/Land Use Guideline 2: Centers	A.3: The proposed retail commercial development is located in an area that has a sufficient population to support it.	NA	
5	Community Form/Land Use Guideline 2: Centers	A.4: The proposed development is compact and results in an efficient land use pattern and cost-effective infrastructure investment.	✓	Existing building to be used, with infrastructure already in place.
6	Community Form/Land Use Guideline 2: Centers	A.5: The proposed center includes a mix of compatible land uses that will reduce trips, support the use of alternative forms of transportation and encourage vitality and sense of place.	NA	
7	Community Form/Land Use Guideline 2: Centers	A.6: The proposal incorporates residential and office uses above retail and/or includes other mixed-use, multi-story retail buildings.	NA	
8	Community Form/Land Use Guideline 2: Centers	A.12: If the proposal is a large development in a center, it is designed to be compact and multi-purpose, and is oriented around a central feature such as a public square or plaza or landscape element.	NA	

9	Community Form/Land Use Guideline 2: Centers	A.13/15: The proposal shares entrance and parking facilities with adjacent uses to reduce curb cuts and surface parking, and locates parking to balance safety, traffic, transit, pedestrian, environmental and aesthetic concerns.	NA	
10	Community Form/Land Use Guideline 2: Centers	A.14: The proposal is designed to share utility hookups and service entrances with adjacent developments, and utility lines are placed underground in common easements.	NA	
11	Community Form/Land Use Guideline 2: Centers	A.16: The proposal is designed to support easy access by bicycle, car and transit and by pedestrians and persons with disabilities.	NA	
12	Community Form/Land Use Guideline 3: Compatibility	A.2: The proposed building materials increase the new development's compatibility.	NA	
13	Community Form/Land Use Guideline 3: Compatibility	A.4/5/6/7: The proposal does not constitute a non-residential expansion into an existing residential area, or demonstrates that despite such an expansion, impacts on existing residences (including traffic, parking, signs, lighting, noise, odor and stormwater) are appropriately mitigated.	✓	Sleeping quarters will be within an existing building that is approximately 500 feet from the residential property to the east and 470 feet from the residential property to the south.
14	Community Form/Land Use Guideline 3: Compatibility	A.5: The proposal mitigates any potential odor or emissions associated with the development.	✓	APCD had no comment.
15	Community Form/Land Use Guideline 3: Compatibility	A.6: The proposal mitigates any adverse impacts of its associated traffic on nearby existing communities.	✓	Transportation has stamped preliminary approval.
16	Community Form/Land Use Guideline 3: Compatibility	A.8: The proposal mitigates adverse impacts of its lighting on nearby properties, and on the night sky.	✓	No new lighting is proposed.
17	Community Form/Land Use Guideline 3: Compatibility	A.11: If the proposal is a higher density or intensity use, it is located along a transit corridor AND in or near an activity center.	NA	

18	Community Form/Land Use Guideline 3: Compatibility	A.21: The proposal provides appropriate transitions between uses that are substantially different in scale and intensity or density of development such as landscaped buffer yards, vegetative berms, compatible building design and materials, height restrictions, or setback requirements.	✓	Proposal will be within an existing building.
19	Community Form/Land Use Guideline 3: Compatibility	A.22: The proposal mitigates the impacts caused when incompatible developments unavoidably occur adjacent to one another by using buffers that are of varying designs such as landscaping, vegetative berms and/or walls, and that address those aspects of the development that have the potential to adversely impact existing area developments.	✓	The proposal will be within an existing building on the 68 acre campus that has existing buffers.
20	Community Form/Land Use Guideline 3: Compatibility	A.23: Setbacks, lot dimensions and building heights are compatible with those of nearby developments that meet form district standards.	✓	The proposal will be within an existing building on the church campus.
21	Community Form/Land Use Guideline 3: Compatibility	A.24: Parking, loading and delivery areas located adjacent to residential areas are designed to minimize adverse impacts of lighting, noise and other potential impacts, and that these areas are located to avoid negatively impacting motorists, residents and pedestrians.	✓	The proposal will be using the existing parking spaces.
22	Community Form/Land Use Guideline 3: Compatibility	A.24: The proposal includes screening and buffering of parking and circulation areas adjacent to the street, and uses design features or landscaping to fill gaps created by surface parking lots. Parking areas and garage doors are oriented to the side or back of buildings rather than to the street.	✓	Distance from adjacent properties alleviates the concern.
23	Community Form/Land Use Guideline 3: Compatibility	A.25: Parking garages are integrated into their surroundings and provide an active, inviting street-level appearance.	NA	
24	Community Form/Land Use Guideline 3: Compatibility	A.28: Signs are compatible with the form district pattern and contribute to the visual quality of their surroundings.	NA	No new signage.

25	Community Form/Land Use Guideline 4: Open Space	A.2/3/7: The proposal provides open space that helps meet the needs of the community as a component of the development and provides for the continued maintenance of that open space.	NA	
26	Community Form/Land Use Guideline 4: Open Space	A.4: Open space design is consistent with the pattern of development in the Neighborhood Form District.	NA	
27	Community Form/Land Use Guideline 4: Open Space	A.5: The proposal integrates natural features into the pattern of development.	NA	
28	Community Form/Land Use Guideline 5: Natural Areas and Scenic and Historic Resources	A.1: The proposal respects the natural features of the site through sensitive site design, avoids substantial changes to the topography and minimizes property damage and environmental degradation resulting from disturbance of natural systems.	✓	The proposal will be within an existing building.
29	Community Form/Land Use Guideline 5: Natural Areas and Scenic and Historic Resources	A.2/4: The proposal includes the preservation, use or adaptive reuse of buildings, sites, districts and landscapes that are recognized as having historical or architectural value, and, if located within the impact area of these resources, is compatible in height, bulk, scale, architecture and placement.	NA	No historical/architectural value.
30	Community Form/Land Use Guideline 5: Natural Areas and Scenic and Historic Resources	A.6: Encourage development to avoid wet or highly permeable soils, severe, steep or unstable slopes with the potential for severe erosion.	✓	
31	Marketplace Guideline 6: Economic Growth and Sustainability	A.3: Encourage redevelopment, reinvestment and rehabilitation in the downtown where it is consistent with the form district pattern.	NA	
32	Marketplace Guideline 6: Economic Growth and Sustainability	A.4: Encourage industries to locate in industrial subdivisions or adjacent to existing industry to take advantage of special infrastructure needs.	NA	
33	Marketplace Guideline 6: Economic Growth and Sustainability	A.6: Locate retail commercial development in activity centers. Locate uses generating large amounts of traffic on a major arterial, at the intersection of two minor arterials or at locations with good access to a major arterial and where the proposed use will not adversely affect adjacent areas.	NA	

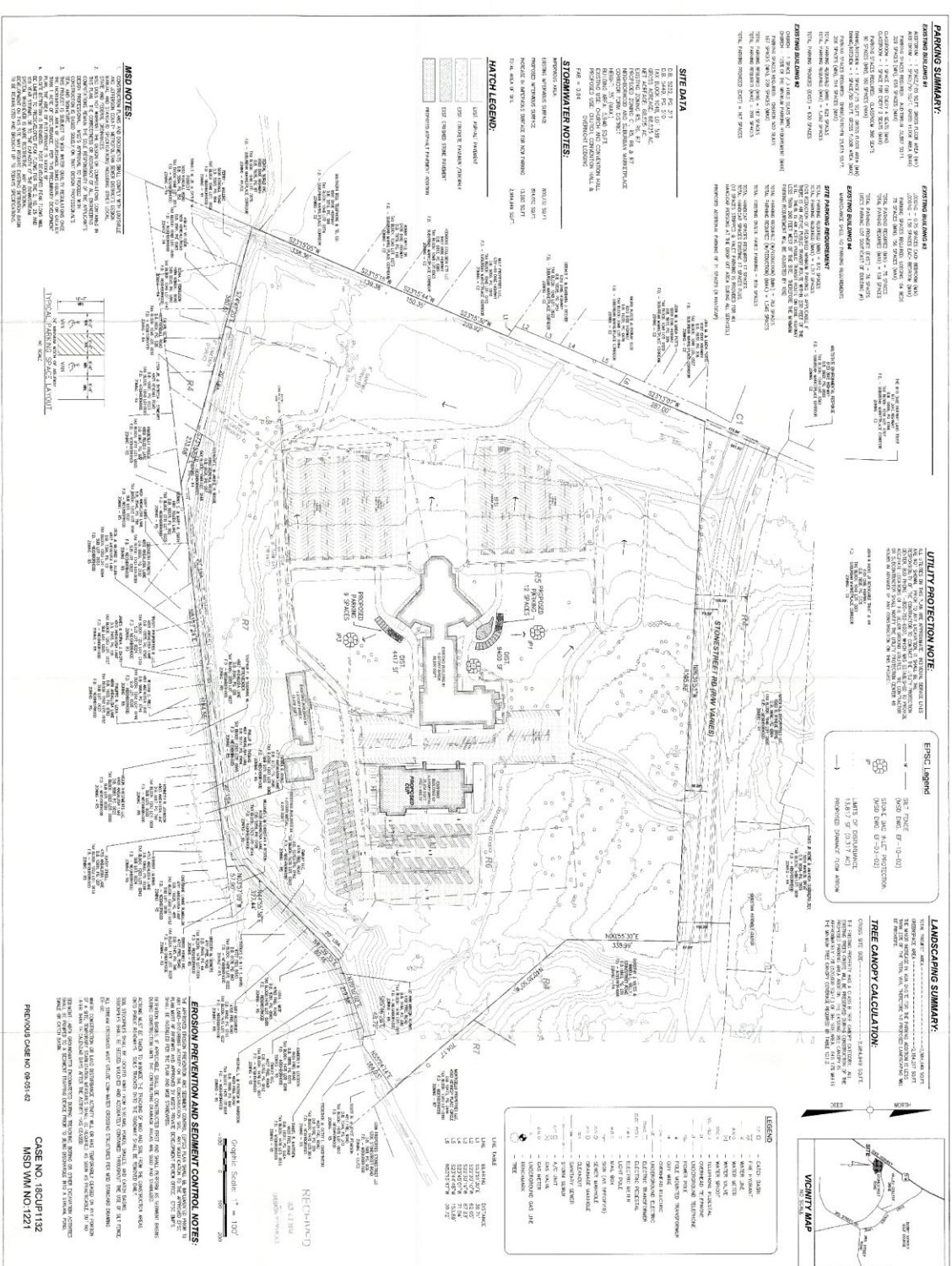
34	Marketplace Guideline 6: Economic Growth and Sustainability	A.8: Require industrial development with more than 100 employees to locate on or near an arterial street, preferably in close proximity to an expressway interchange. Require industrial development with less than 100 employees to locate on or near an arterial street.	NA	
35	Mobility/Transportation Guideline 7: Circulation	A.1/2: The proposal will contribute its proportional share of the cost of roadway improvements and other services and public facilities made necessary by the development through physical improvements to these facilities, contribution of money, or other means.	NA	
36	Mobility/Transportation Guideline 7: Circulation	A.3/4: The proposal promotes mass transit, bicycle and pedestrian use and provides amenities to support these modes of transportation.	NA	
37	Mobility/Transportation Guideline 7: Circulation	A.6: The proposal's transportation facilities are compatible with and support access to surrounding land uses, and contribute to the appropriate development of adjacent lands. The proposal includes at least one continuous roadway through the development, adequate street stubs, and relies on cul-de-sacs only as short side streets or where natural features limit development of "through" roads.	NA	
38	Mobility/Transportation Guideline 7: Circulation	A.9: The proposal includes the dedication of rights-of-way for street, transit corridors, bikeway and walkway facilities within or abutting the development.	NA	
39	Mobility/Transportation Guideline 7: Circulation	A.10: The proposal includes adequate parking spaces to support the use.	✓	896 parking spaces will be available on the church campus.
40	Mobility/Transportation Guideline 7: Circulation	A.13/16: The proposal provides for joint and cross access through the development and to connect to adjacent development sites.	NA	
41	Mobility/Transportation Guideline 8: Transportation Facility Design	A.8: Adequate stub streets are provided for future roadway connections that support and contribute to appropriate development of adjacent land.	NA	

42	Mobility/Transportation Guideline 8: Transportation Facility Design	A.9: Avoid access to development through areas of significantly lower intensity or density if such access would create a significant nuisance.	NA	
43	Mobility/Transportation Guideline 8: Transportation Facility Design	A.11: The development provides for an appropriate functional hierarchy of streets and appropriate linkages between activity areas in and adjacent to the development site.	NA	
44	Mobility/Transportation Guideline 9: Bicycle, Pedestrian and Transit	A.1/2: The proposal provides, where appropriate, for the movement of pedestrians, bicyclists and transit users around and through the development, provides bicycle and pedestrian connections to adjacent developments and to transit stops, and is appropriately located for its density and intensity.	NA	
45	Livability/Environment Guideline 10: Flooding and Stormwater	The proposal's drainage plans have been approved by MSD, and the proposal mitigates negative impacts to the floodplain and minimizes impervious area. Solid blue line streams are protected through a vegetative buffer, and drainage designs are capable of accommodating upstream runoff assuming a fully-developed watershed. If streambank restoration or preservation is necessary, the proposal uses best management practices.	✓	Proposal has received preliminary approval from MSD.
46	Livability/Environment Guideline 12: Air Quality	The proposal has been reviewed by APCD and found to not have a negative impact on air quality.	NA	
47	Livability/Environment Guideline 13: Landscape Character	A.3: The proposal includes additions and connections to a system of natural corridors that can provide habitat areas and allow for migration.	NA	
48	Community Facilities Guideline 14: Infrastructure	A.2: The proposal is located in an area served by existing utilities or planned for utilities.	✓	
49	Community Facilities Guideline 14: Infrastructure	A.3: The proposal has access to an adequate supply of potable water and water for fire-fighting purposes.	✓	

50	Community Facilities Guideline 14: Infrastructure	A.4: The proposal has adequate means of sewage treatment and disposal to protect public health and to protect water quality in lakes and streams.	✓	Use of an existing building on the church campus.
----	---	---	---	---

Conditions of Approval

1. The site shall be developed in strict compliance with the approved development plan (including all notes thereon). No further development shall occur on the site without prior review and approval by the Board.
2. The Conditional Use Permit shall be "exercised" as described in KRS 100.237 within two years of the Board's vote on this case. If the Conditional Use Permit is not so exercised, the site shall not be used for a private institution without further review and approval by the Board.



PROPOSED CONDITIONAL USE PLAN
Christian Assembly Church
 Christian Assembly Church
 3705 Taylorsville Road
 Louisville, KY 40220

PROPOSED CONDITIONAL USE PLAN
Christian Assembly Church

PROPOSED CONDITIONAL USE PLAN
Christian Assembly Church

PROPOSED CONDITIONAL USE PLAN
Christian Assembly Church

PROPOSED CONDITIONAL USE PLAN
Christian Assembly Church

PROPOSED CONDITIONAL USE PLAN
Christian Assembly Church

PROPOSED CONDITIONAL USE PLAN
Christian Assembly Church

PROPOSED CONDITIONAL USE PLAN
Christian Assembly Church

PARKING SUMMARY:

EXISTING PARKING:
 1. 150 SPACES
 2. 100 SPACES
 3. 50 SPACES

UTILITY PROTECTION NOTE:

ALL UTILITIES SHOWN ARE BASED ON RECORD DRAWINGS AND FIELD SURVEY. THE ENGINEER HAS CONDUCTED VISUAL INSPECTIONS OF THE UTILITIES SHOWN ON THIS PLAN AND HAS FOUND THEM TO BE ACCURATE. THE ENGINEER DOES NOT WARRANT THE ACCURACY OF THE UTILITIES SHOWN ON THIS PLAN.

ES&S Legend

SEE PLAN FOR ES&S INFORMATION.
 1. 150 SPACES
 2. 100 SPACES
 3. 50 SPACES

LANDSCAPING SUMMARY:

LANDSCAPING SHALL BE AS SHOWN ON THIS PLAN. THE ENGINEER HAS CONDUCTED VISUAL INSPECTIONS OF THE LANDSCAPING SHOWN ON THIS PLAN AND HAS FOUND THEM TO BE ACCURATE. THE ENGINEER DOES NOT WARRANT THE ACCURACY OF THE LANDSCAPING SHOWN ON THIS PLAN.

TREE CANOPY CALCULATION:

THE TREE CANOPY CALCULATION IS BASED ON THE TREE CANOPY DATA PROVIDED BY THE CLIENT. THE ENGINEER HAS CONDUCTED VISUAL INSPECTIONS OF THE TREE CANOPY DATA AND HAS FOUND THEM TO BE ACCURATE. THE ENGINEER DOES NOT WARRANT THE ACCURACY OF THE TREE CANOPY DATA PROVIDED BY THE CLIENT.

LEGEND

- 1. 150 SPACES
- 2. 100 SPACES
- 3. 50 SPACES
- 4. 150 SPACES
- 5. 100 SPACES
- 6. 50 SPACES
- 7. 150 SPACES
- 8. 100 SPACES
- 9. 50 SPACES
- 10. 150 SPACES
- 11. 100 SPACES
- 12. 50 SPACES
- 13. 150 SPACES
- 14. 100 SPACES
- 15. 50 SPACES
- 16. 150 SPACES
- 17. 100 SPACES
- 18. 50 SPACES
- 19. 150 SPACES
- 20. 100 SPACES
- 21. 50 SPACES
- 22. 150 SPACES
- 23. 100 SPACES
- 24. 50 SPACES
- 25. 150 SPACES
- 26. 100 SPACES
- 27. 50 SPACES
- 28. 150 SPACES
- 29. 100 SPACES
- 30. 50 SPACES

STORMWATER NOTES:

STORMWATER SHALL BE AS SHOWN ON THIS PLAN. THE ENGINEER HAS CONDUCTED VISUAL INSPECTIONS OF THE STORMWATER SHOWN ON THIS PLAN AND HAS FOUND THEM TO BE ACCURATE. THE ENGINEER DOES NOT WARRANT THE ACCURACY OF THE STORMWATER SHOWN ON THIS PLAN.

SITE DATA

1. 150 SPACES
 2. 100 SPACES
 3. 50 SPACES

HATCH LEGEND:

1. 150 SPACES
 2. 100 SPACES
 3. 50 SPACES

MSD NOTES:

1. 150 SPACES
 2. 100 SPACES
 3. 50 SPACES

PROPOSED CONDITIONAL USE PLAN

Christian Assembly Church

PROPOSED CONDITIONAL USE PLAN

Christian Assembly Church

PROPOSED CONDITIONAL USE PLAN

Christian Assembly Church

PROPOSED CONDITIONAL USE PLAN

Christian Assembly Church

PROPOSED CONDITIONAL USE PLAN

Christian Assembly Church

PROPOSED CONDITIONAL USE PLAN

Christian Assembly Church

PROPOSED CONDITIONAL USE PLAN

Christian Assembly Church

PROPOSED CONDITIONAL USE PLAN

Christian Assembly Church

PROPOSED CONDITIONAL USE PLAN

Christian Assembly Church

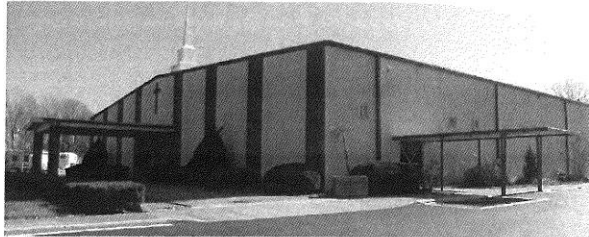
BlueStone
 ENGINEERS, PLLC
 3705 TAYLORSVILLE ROAD
 SUITE 202
 LOUISVILLE, KENTUCKY 40220
 PHONE 502.797.9286
 FAX 502.797.9287
 EMAIL: CHUCK@BLUESTONEENGINEERS.COM

PROPOSED CONDITIONAL USE PLAN
Christian Assembly Church

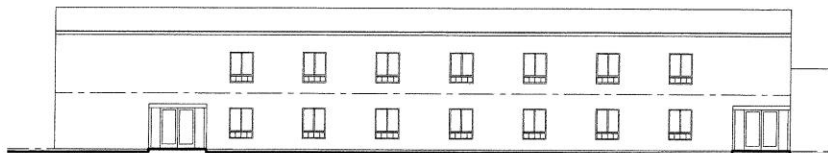
PROPOSED CONDITIONAL USE PLAN
Christian Assembly Church

PROPOSED CONDITIONAL USE PLAN
Christian Assembly Church

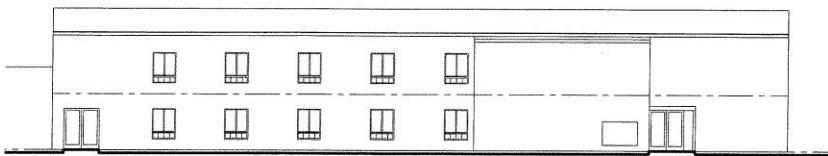
PROPOSED CONDITIONAL USE PLAN
Christian Assembly Church



Existing Front/Side Elevation
Not to Scale



Revovated West Elevation
1/8"=1'-0"



Revovated East Elevation
1/8"=1'-0"

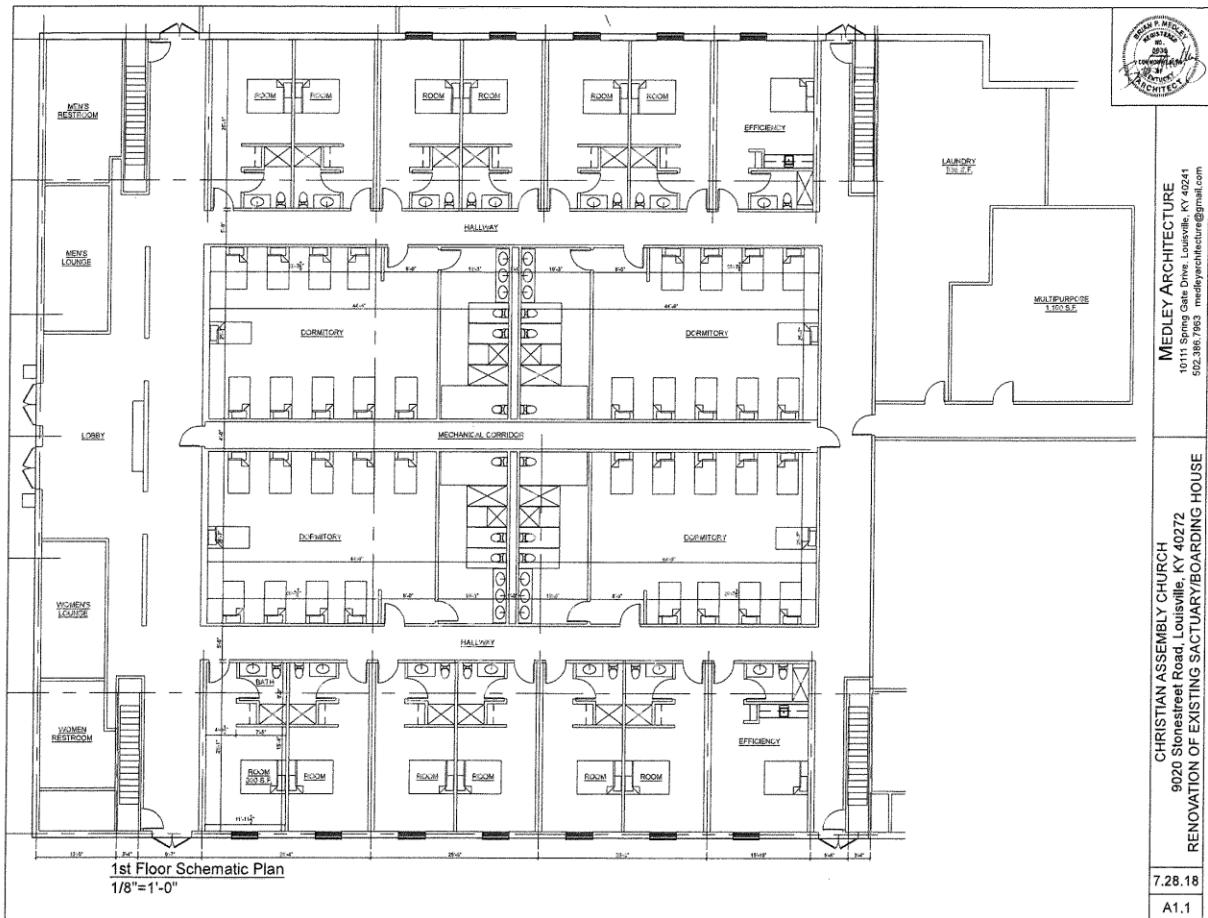


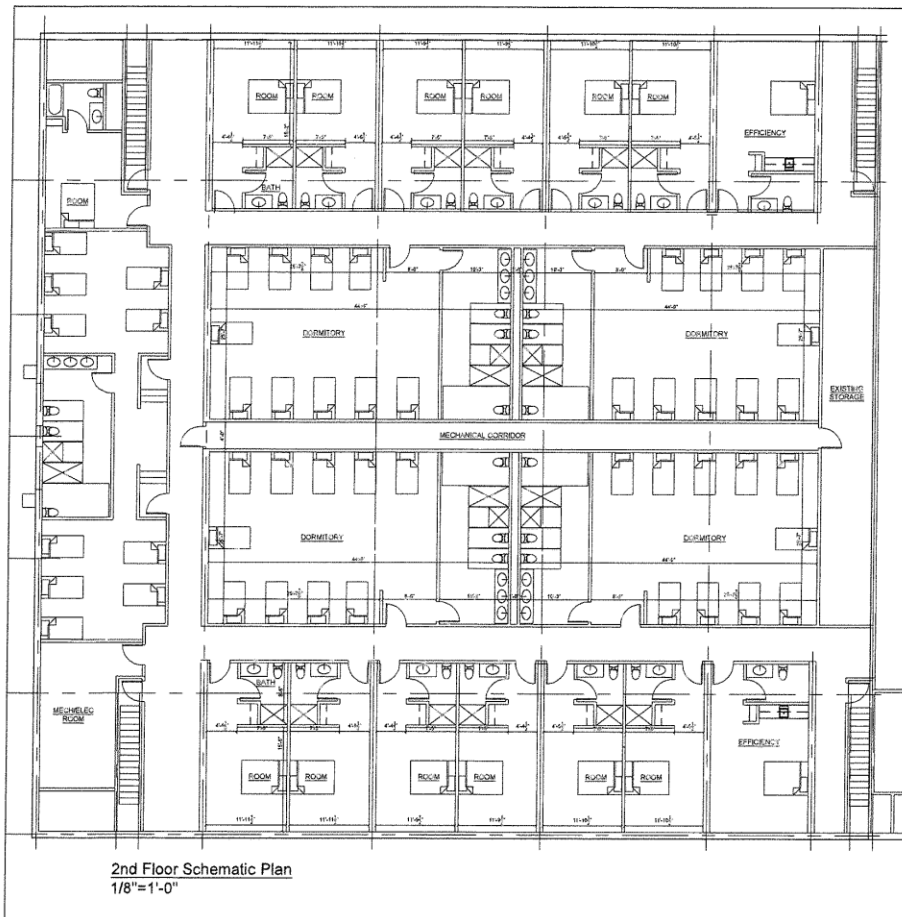
MEDLEY ARCHITECTURE
1111 S. Third Street, Louisville, KY 40204
602.338.7292 medleyarchitecture@gmail.com

CHRISTIAN ASSEMBLY CHURCH
9020 Stonestreet Road, Louisville, KY 40272
RENOVATION OF EXISTING SACUARY/BOARDING HOUSE

1.14.18

A1.0





MEDLEY ARCHITECTURE
10111 Spring Gate Drive, Louisville, KY 40241
502.366.7963 medleyarchitecture@gmail.com

CHRISTIAN ASSEMBLY CHURCH
9020 Stonestreet Road, Louisville, KY 40272
RENOVATION OF EXISTING SACTUARY/BOARDING HOUSE

7.28.18
A1.2