

studio kremer architects
 1231 S Shelby St, Louisville, KY 40203
 TEL: 502-499-1100 FAX: 502-499-1101

BUILDING ELEVATIONS

Mayfair at River Road

7312 River Rd.
 Louisville, KY

DATE: 12.07.2020
 DRAWN BY: BCM
 CHECKED BY: SEK
 REVISIONS:
 rev
 rev
 rev

2020-46

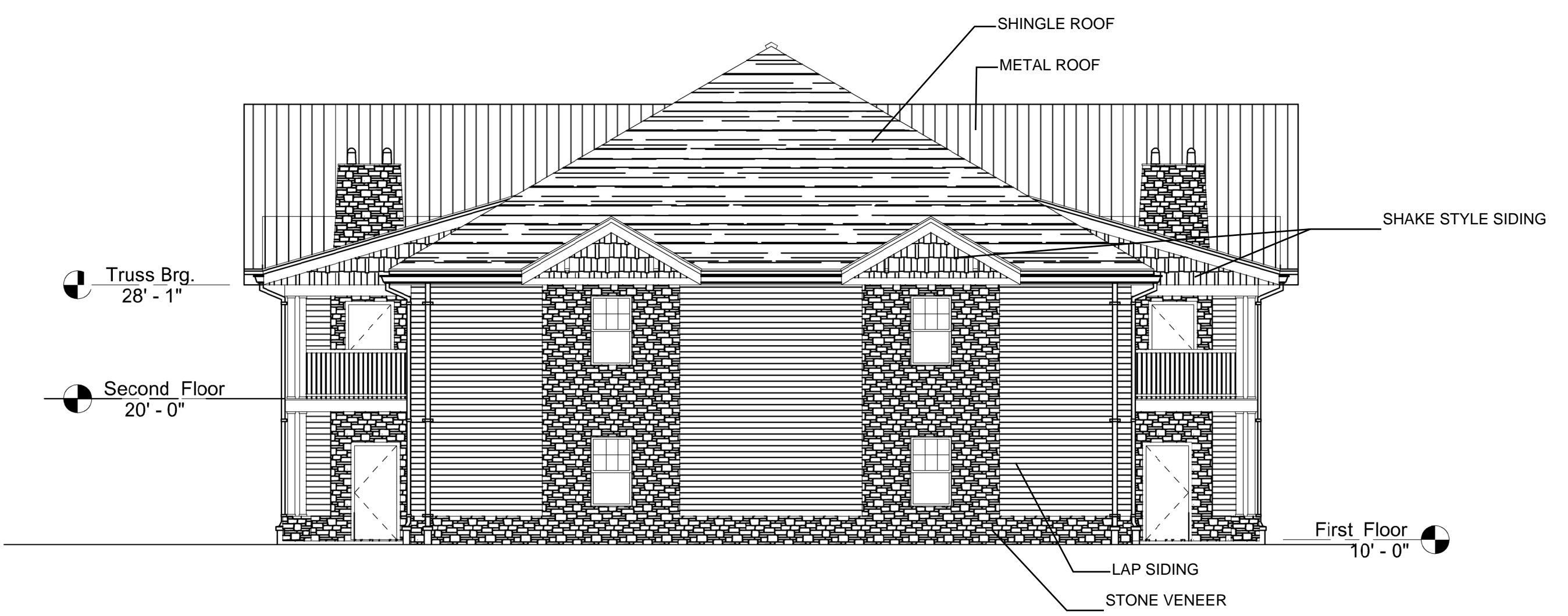
PR-1

21-ZONE-0003

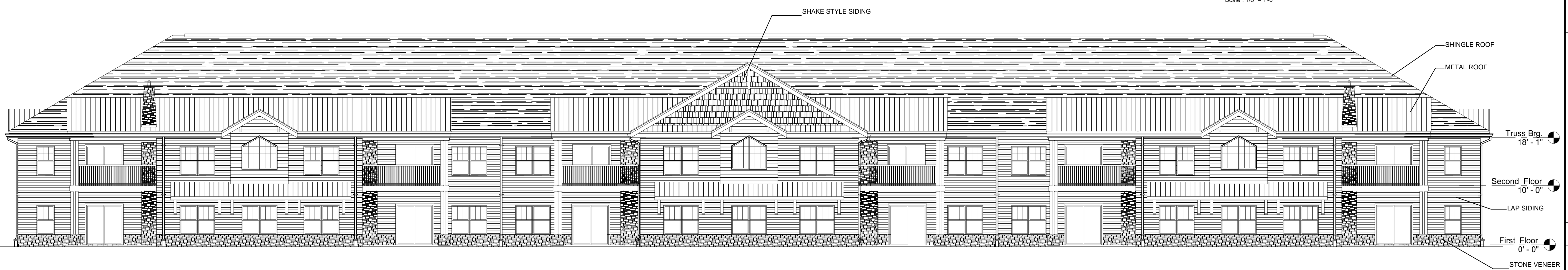
FOR REVIEW ONLY



Front Elevation
 Scale : 1/8" = 1'-0"

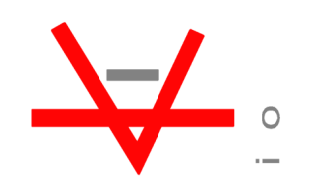


Side Elevations
 Scale : 1/8" = 1'-0"



Rear Elevation
 Scale : 1/8" = 1'-0"

RECEIVED
 MAR 09 2021
 PLANNING & DESIGN SERVICES



studio kremer architects
 1231 S Shelby St, Louisville, KY 40203
 TEL: 502-499-1100 FAX: 502-499-1101

BUILDING ELEVATIONS

Mayfair at River Road

7312 River Rd.
 Louisville, KY

DATE: 12.07.2020
 DRAWN BY: BCM
 CHECKED BY: SEK
 REVISIONS:
 rev
 rev
 rev

2020-46

PR-1

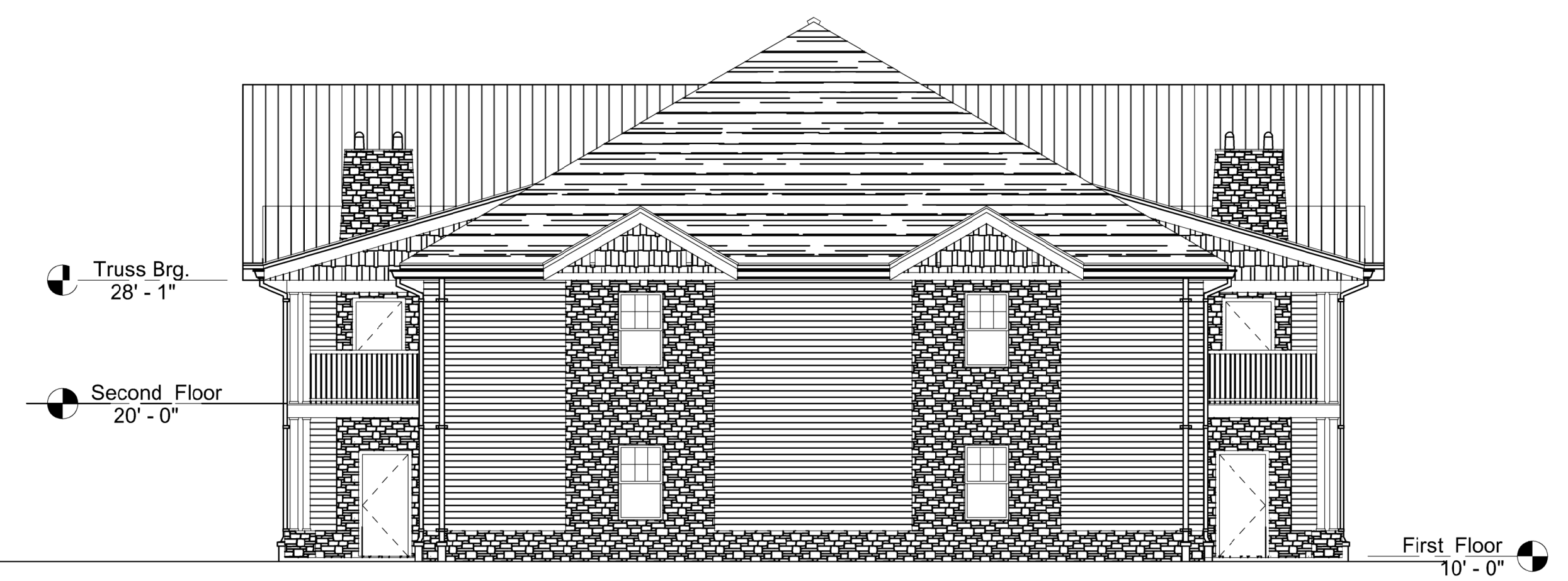
Truss Brg.
18' - 1"

Second Floor
10' - 0"

First Floor
0' - 0"



Front Elevation
 Scale : 1/8" = 1'-0"



Side Elevations
 Scale : 1/8" = 1'-0"

Truss Brg.
28' - 1"

Second Floor
20' - 0"

First Floor
10' - 0"

Truss Brg.
18' - 1"

Second Floor
10' - 0"

First Floor
0' - 0"

Rear Elevation
 Scale : 1/8" = 1'-0"



FOR REVIEW ONLY

RECEIVED
 MAR 09 2021
 PLANNING & DESIGN SERVICES

21-ZONE-0003