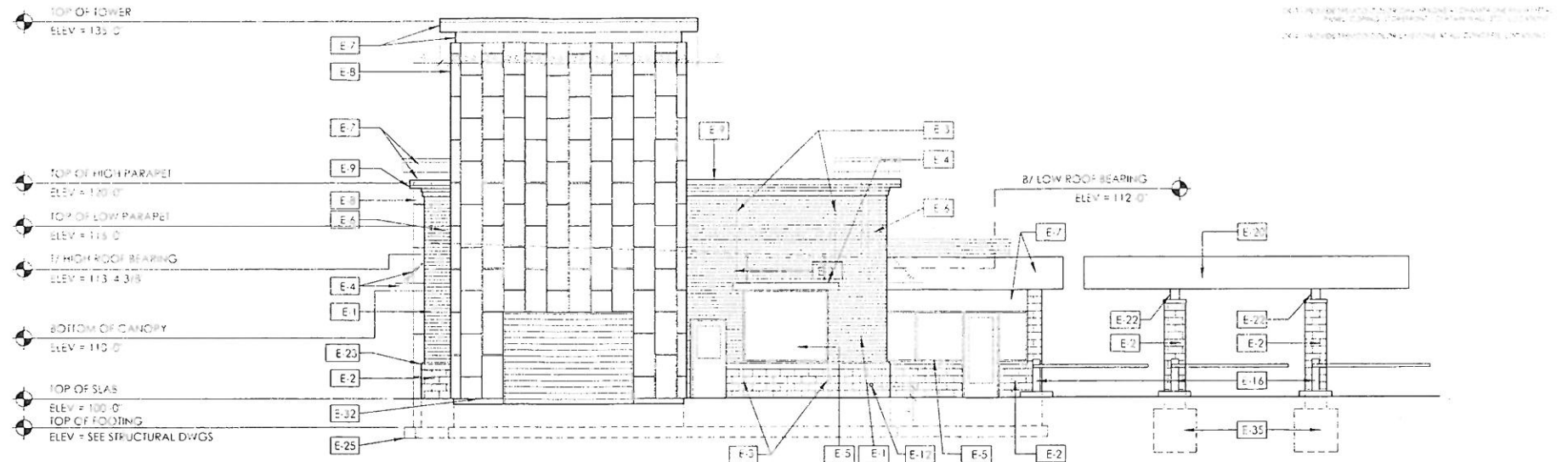


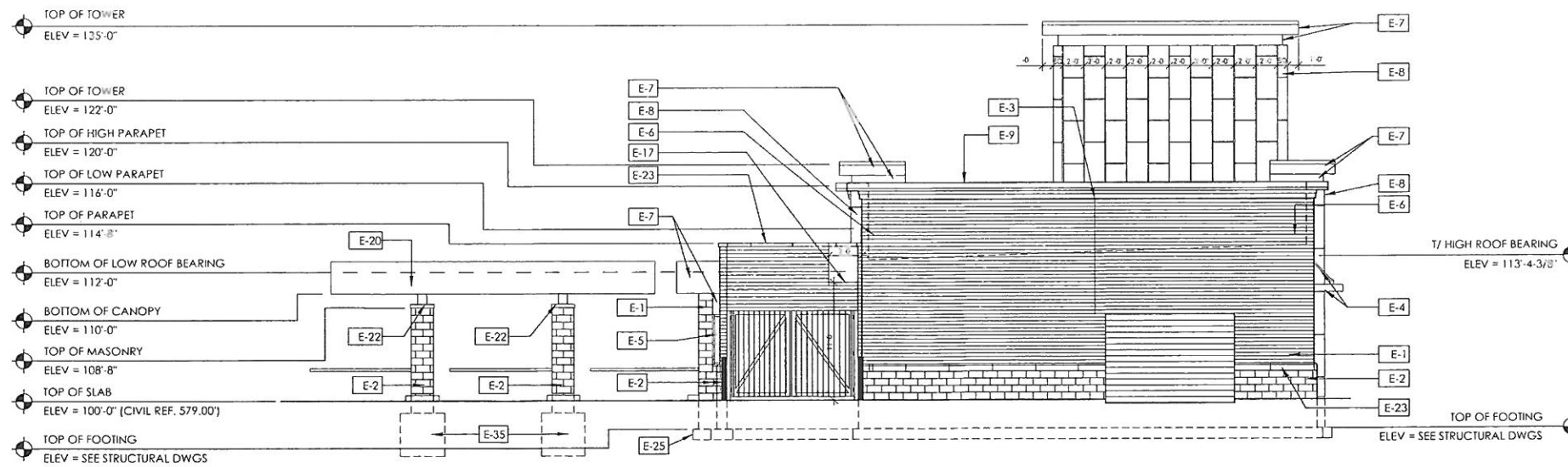
MASONRY MOCK UP

CAULKING COLOR SCHEDULE

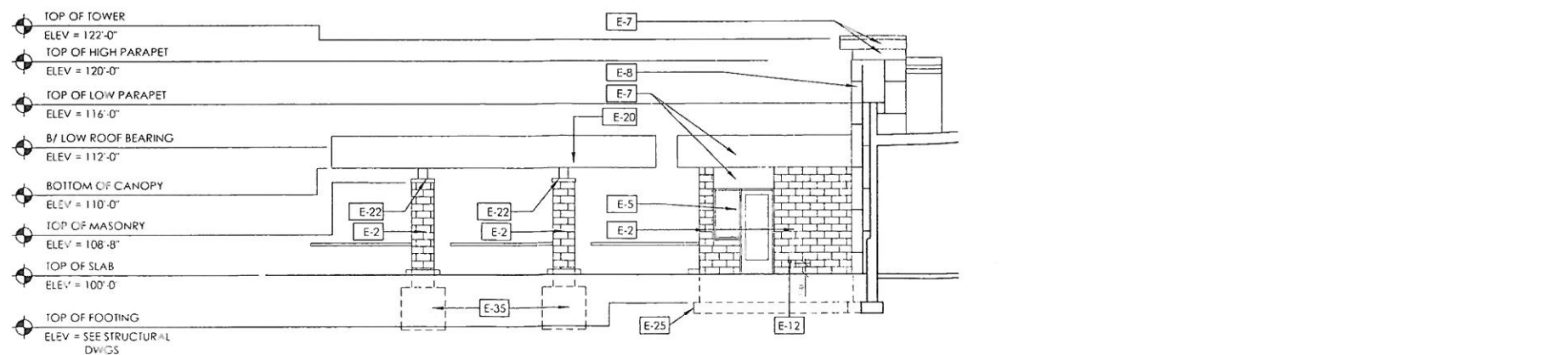
ELEVATION KEY NOTES



1 EAST ELEVATION
3/16" = 1'-0"



2 WEST ELEVATION
3/16" = 1'-0"



3 WEST ELEVATION AT OFFICE
3/16" = 1'-0"

- ELEVATION KEY NOTES**
1. ALL EXPOSED GAS PIPING SHALL BE PAINTED. ANY PIPING INSTALLED ON OUTSIDE OF WALL TO ROOF SHALL BE PAINTED TO MATCH THE BRICK / BLOCK BEHIND THE PIPE. ANY PIPING INSTALLATION ROOF MUST BE PAINTED OSHA YELLOW.
 2. CONTROL JOINT PLACEMENT: CONTROL JOINTS SHOULD BE LOCATED WHERE VOLUME CHANGES IN THE WALL. INTENT IS TO AVOID SHRINKAGE CRACKING OR REPERATURE CHANGES ARE LIKELY TO CREATE TENSION IN THE MASONRY THAT WILL EXCEED ITS CAPACITY.
 1. AT CHANGES IN WALL HEIGHT
 2. AT CHANGES IN WALL THICKNESS, SUCH AS PIPE AND DUCT CHANGES AND PLATES
 3. AT TYPICAL JOINTS IN FOUNDATIONS AND FLOORS
 4. AT BELIEVED WEAK JOINTS IN ROOFS AND FLOORS THAT BEAR ON THE WALL
 5. METAL ONE OR BOTH SIDES OF DOOR AND WINDOW OPENINGS. USUALLY, A CONTROL JOINT IS PLACED AT ONE SIDE OF AN OPENING (1/2" IN AT ONE AND AT BOTH JAMBS OF OPENINGS) OR BY WEED CONTROL JOINTS CAN BE AWAY FROM THE OPENING IF ADEQUATE TENSILE REINFORCEMENT IS PLACED ABOVE, BELOW AND BEHIND WALL OPENING.
 6. ADJACENT TO CORNERS OF WALL OR INTERSECTIONS WITH A DUCTANIT EQUIVALENT TO HALF THE CONTROL JOINT SPACING REQUIREMENT FOR THAT WALL.
 7. DISTANCES BETWEEN JOINTS SHOULD NOT EXCEED 20 FEET FOR SINGLE IN THE WALL CONSTRUCTION.
 3. REFER TO MCAA TECH NOTE 28 AND 29 FOR ADDITIONAL INFORMATION.
 4. NOT USED.
 5. RUST STEEL CORROSION FINISH TO MATCH CANOPY FACIA WITH MULTIGRAN ENAMEL PAINT AND PRIMER.
 6. 2" X 4" X 1/2" SHIP LUG SHIP LUG WATER TABLE (CUSTOM CAST STONE LIGHT BRICK WITH BRIGHT C-100 TYPE M MORTAR COLOR - NO SUBSTITUTIONS WILL BE ACCEPTED).
 7. SLIDING PASS WITH WINDSTOP, SEE FRAME ELEVATION.
 8. CONC. FOUNDATION - SEE STRUCTURAL DWGS.
 9. NOT USED.
 10. NOT USED.
 11. NOT USED.
 12. NOT USED.
 13. NOT USED.
 14. NOT USED.
 15. 1/4" X 4" X 1/2" CAST STONE PARAPET CAP / COPING. CUSTOM CAST STONE. LIGHT BRICK WITH BRIGHT C-100 TYPE M MORTAR COLOR - NO SUBSTITUTIONS WILL BE ACCEPTED.
 16. METAL PANEL INSTALLER SHALL COORDINATE BOTTOMS OF METAL PANELS TO FINISHED GRADE.
 17. NOT USED.
 18. NOT USED.
 19. CASHIER CANOPY CONCRETE FOUNDATION. DESIGNED BY CANOPY PROVIDER. INSTALLED BY G.C.
 20. PREFINISHED METAL SCUPPER & DOWNS/OUT W/ SECONDARY DRAINAGE COMPARTMENT. FINISH TO MATCH METAL PARAPET COPING. KYNAR 400 2 - COAT. COLOR: DRIVEDASH CHAMPAGNE DR102.
 21. ENGINEERED RETAINING WALL DESIGNED BY OTHERS. FINISH AND COLOR TO MATCH BUILDING MAINSIDE.
 22. WALL OPENING FOR DRAINAGE.

- ELEVATION GENERAL NOTES**
1. ALL EXPOSED GAS PIPING SHALL BE PAINTED. ANY PIPING INSTALLED ON OUTSIDE OF WALL TO ROOF SHALL BE PAINTED TO MATCH THE BRICK / BLOCK BEHIND THE PIPE. ANY PIPING INSTALLATION ROOF MUST BE PAINTED OSHA YELLOW.
 2. CONTROL JOINT PLACEMENT: CONTROL JOINTS SHOULD BE LOCATED WHERE VOLUME CHANGES IN THE WALL. INTENT IS TO AVOID SHRINKAGE CRACKING OR REPERATURE CHANGES ARE LIKELY TO CREATE TENSION IN THE MASONRY THAT WILL EXCEED ITS CAPACITY.
 1. AT CHANGES IN WALL HEIGHT
 2. AT CHANGES IN WALL THICKNESS, SUCH AS PIPE AND DUCT CHANGES AND PLATES
 3. AT TYPICAL JOINTS IN FOUNDATIONS AND FLOORS
 4. AT BELIEVED WEAK JOINTS IN ROOFS AND FLOORS THAT BEAR ON THE WALL
 5. METAL ONE OR BOTH SIDES OF DOOR AND WINDOW OPENINGS. USUALLY, A CONTROL JOINT IS PLACED AT ONE SIDE OF AN OPENING (1/2" IN AT ONE AND AT BOTH JAMBS OF OPENINGS) OR BY WEED CONTROL JOINTS CAN BE AWAY FROM THE OPENING IF ADEQUATE TENSILE REINFORCEMENT IS PLACED ABOVE, BELOW AND BEHIND WALL OPENING.
 6. ADJACENT TO CORNERS OF WALL OR INTERSECTIONS WITH A DUCTANIT EQUIVALENT TO HALF THE CONTROL JOINT SPACING REQUIREMENT FOR THAT WALL.
 7. DISTANCES BETWEEN JOINTS SHOULD NOT EXCEED 20 FEET FOR SINGLE IN THE WALL CONSTRUCTION.
 3. REFER TO MCAA TECH NOTE 28 AND 29 FOR ADDITIONAL INFORMATION.

K B A
KBA INCORPORATED
P (513) 752-7600
F (513) 752-7613

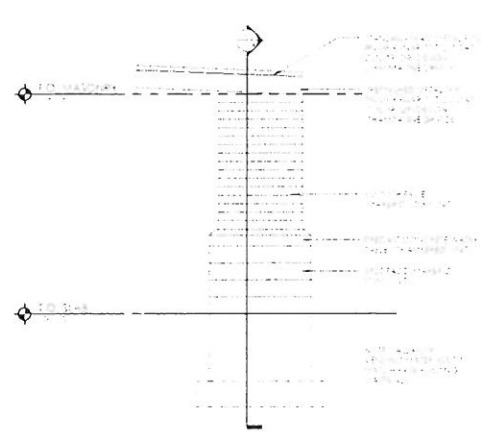
SHEET CONTENTS:
EXTERIOR ELEVATIONS

Proposed New Building:
MIKE'S CARWASH
2962 BRECKENRIDGE LN
LOUISVILLE, KY 40220

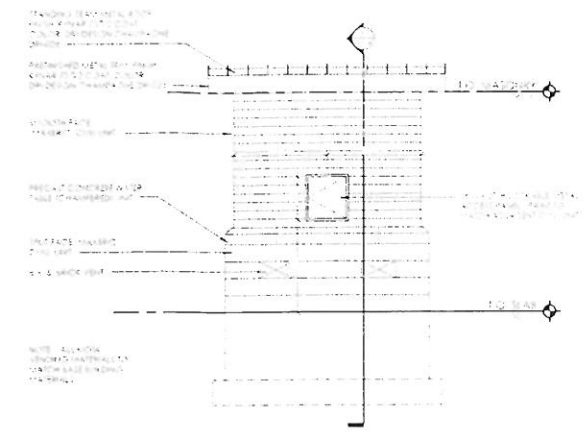
REV. DATE CKD
RECEIVED
Drawn By: Checked: MDS
JAN 21 2020
PLANNING & DESIGN SERVICES

Date: 01/20/20 Job No: 19,101
A502
of:

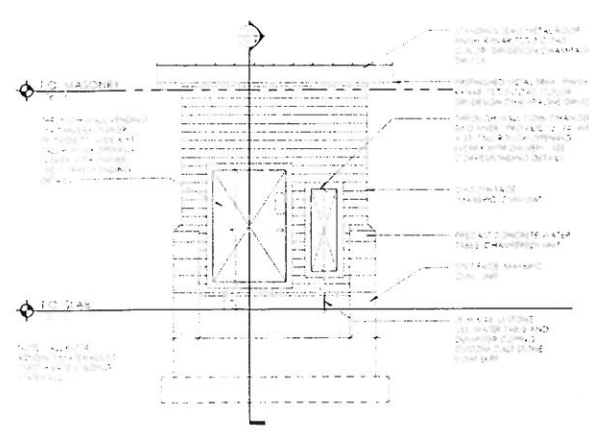
PRELIMINARY PLOT
01/20/20



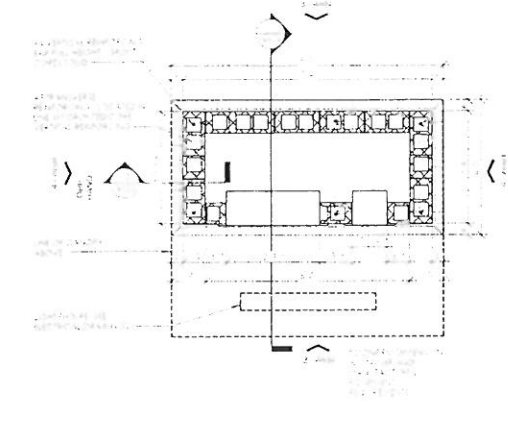
4 SIDE ELEVATION
3/8" = 1'-0"



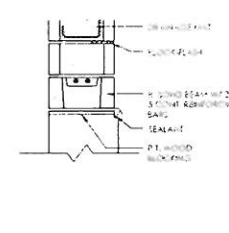
3 REAR ELEVATION
3/8" = 1'-0"



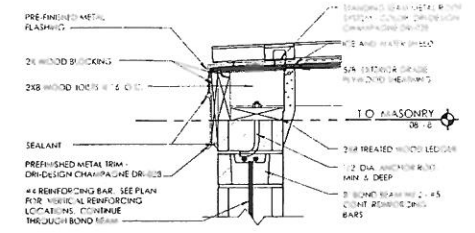
2 FRONT ELEVATION
3/8" = 1'-0"



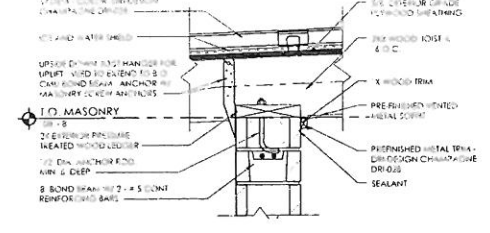
1 KIOSK FLOOR PLAN
(NOTE SEE CIVIL SITE PLANS FOR LOCATIONS (2 THIS SITE))
1/2" = 1'-0"



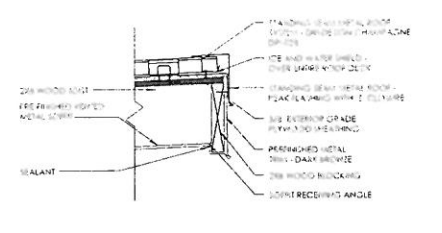
8 SECTION DETAIL
1 1/2" = 1'-0"



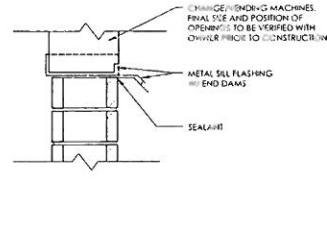
7 SECTION DETAIL
1 1/2" = 1'-0"



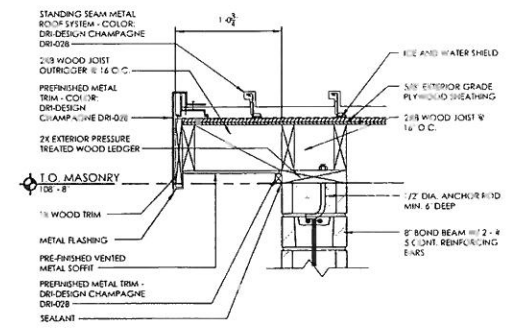
6 SECTION DETAIL
1 1/2" = 1'-0"



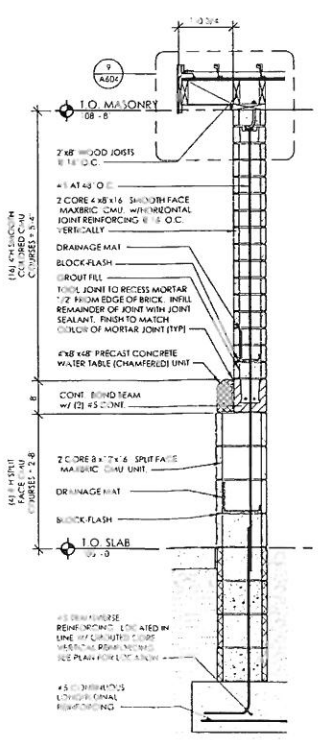
5 SECTION DETAIL
1 1/2" = 1'-0"



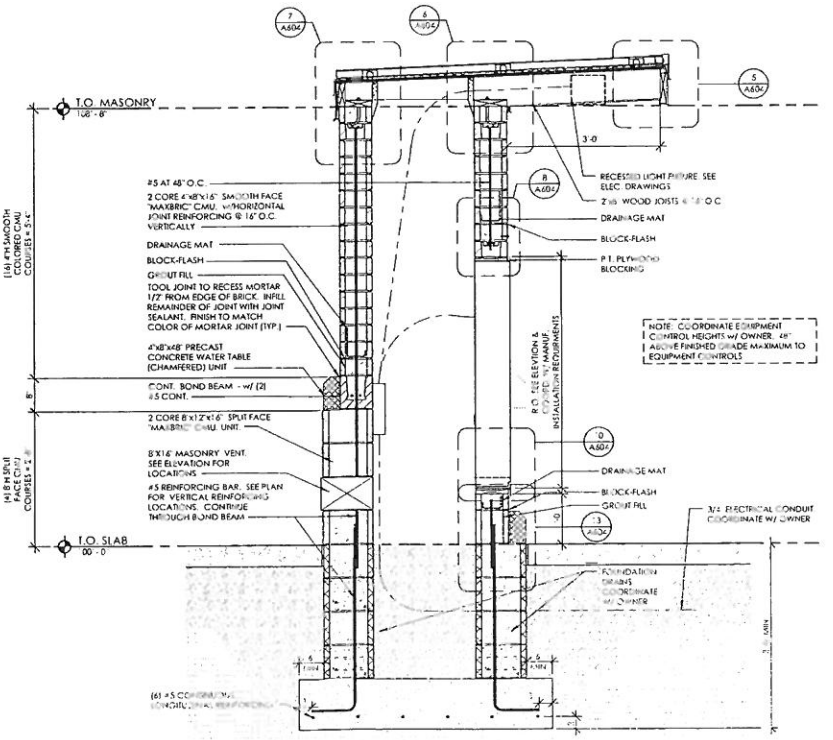
10 SECTION DETAIL
1 1/2" = 1'-0"



9 SECTION DETAIL
1 1/2" = 1'-0"

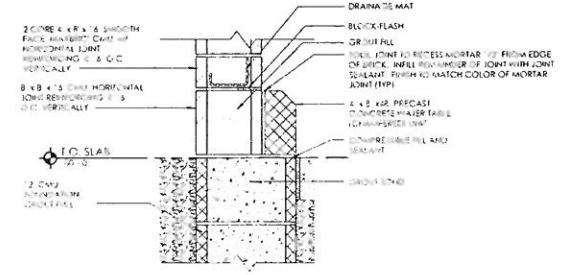


12 SECTION
3/4" = 1'-0"



11 SECTION
3/4" = 1'-0"

- NOTES**
1. ALL MORTAR SHALL BE TYPE S. NO ADMIXTURES MAY BE USED UNLESS APPROVED BY ARCHITECT. MORTAR SHALL NOT BE USED FOR CROUTING CORES OR FILLING BOND BEAMS
 2. ALL CONCRETE FOOTINGS SHALL HAVE A 28 DAY COMPRESSIVE STRENGTH OF 3000 PSI AND A 2% AIR ENTRAINMENT

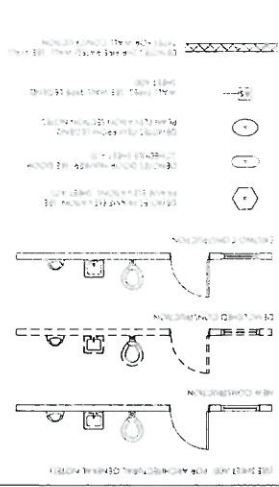


13 SECTION DETAIL
1 1/2" = 1'-0"

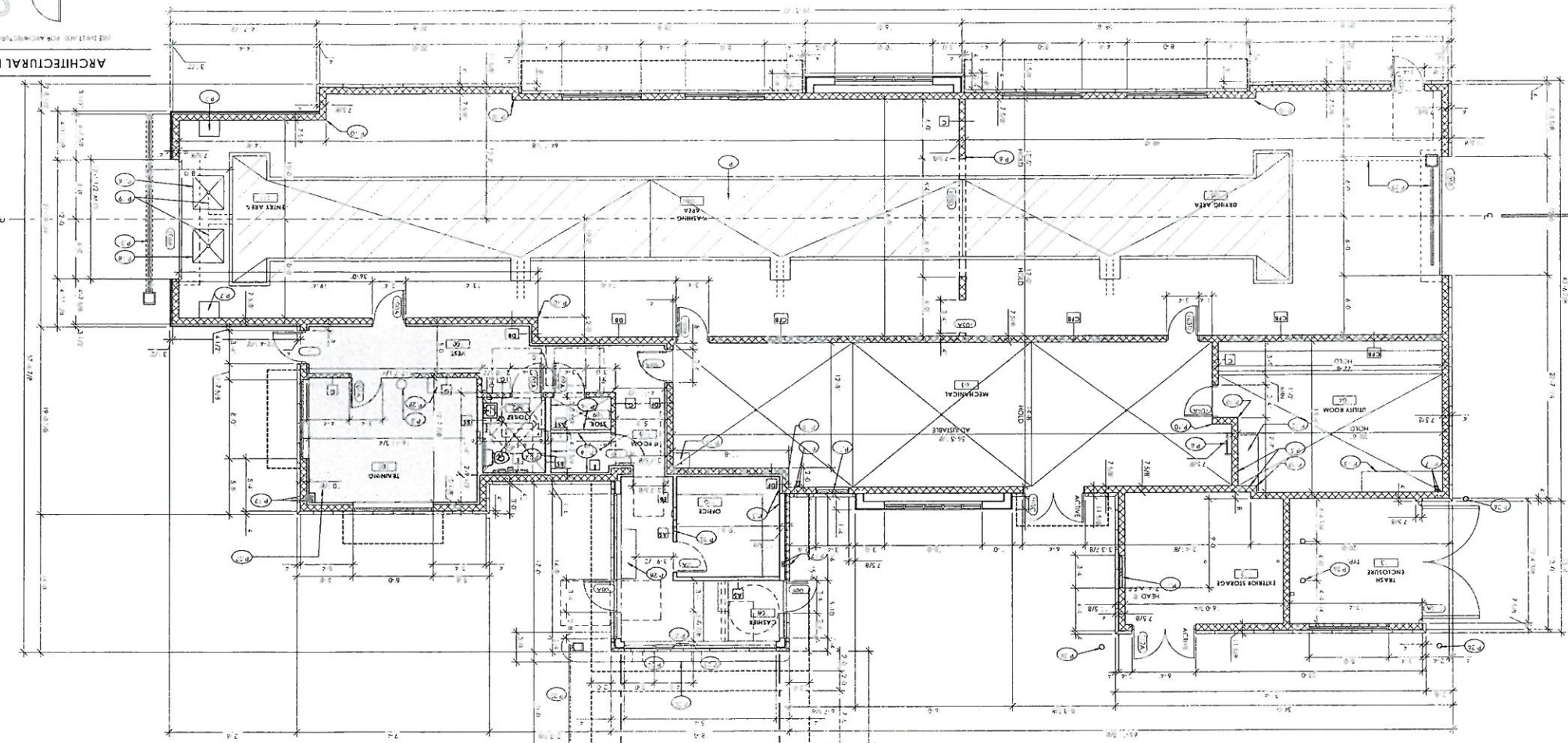
Proposed New Building:
MIKE'S CARWASH
 2962 BRECKENRIDGE LN
 LOUISVILLE, KY 40220
 REV. DATE CKD

RECEIVED
 JAN 21 2020
 PLANNING & DESIGN SERVICES
 Date: 01/20/20 10:11 AM
A604
 of

1 FIRST FLOOR PLAN



ARCHITECTURAL GENERAL NOTES
A. REFER TO SPECIFICATIONS FOR MATERIALS AND FINISHES...
B. SEE MECHANICAL AND ELECTRICAL PLANS FOR DETAILS...



ARCHITECTURAL KEYS LEGEND

ARCHITECTURAL KEY NOTES
1. REFER TO SPECIFICATIONS FOR MATERIALS AND FINISHES...
2. SEE MECHANICAL AND ELECTRICAL PLANS FOR DETAILS...

A101
Date: 01/20/20 Job No: 19151

Drawn By: TAY Checked: MDR

REV. DATE

Proposed New Building:
MIKES CARWASH
2962 BRECKENRIDGE LN
LOUISVILLE, KY 40220

SHEET CONTENTS:
FLOOR PLAN
CEILING PLAN
KBA INCORPORATED
P (513) 752-7800

RECEIVED
JAN 21 2020
PLANNING & DESIGN SERVICES

20 - DDP - 0006