

ORDINANCE NO. 054, SERIES 2015

AN ORDINANCE CLOSING TWO ALLEYS BETWEEN 7TH AND 8TH STREETS AND GARLAND AVENUE AND BRECKINRIDGE STREET CONTAINING 0.22 ACRES AND BEING IN LOUISVILLE METRO (CASE NO. 14STREETS1024).

SPONSORED BY: COUNCILWOMAN MADONNA FLOOD

WHEREAS, the Louisville Metro Planning Commission, as set forth in the minutes and records of Case No. 14STREETS1024, has recommended to the Legislative Council of the Louisville/Jefferson County Metro Government (the "Council") that two alleys between 7th and 8th Streets and Garland Avenue and Breckinridge Street containing 0.22 acres and being in Louisville Metro be closed as said closings are in compliance with the guidelines, principles and objectives of the Comprehensive Plan; and

WHEREAS, the Council concurs in and adopts the findings of the Planning Commission in Case No. 14STREETS1024 and approves and accepts the recommendation of the Planning Commission as set out in said minutes and records;

NOW THEREFORE BE IT ORDAINED BY THE LEGISLATIVE COUNCIL OF THE LOUISVILLE/JEFFERSON COUNTY METRO GOVERNMENT AS FOLLOWS:

Section I: The two alleys between 7th and 8th Streets and Garland Avenue and Breckinridge Street containing 0.22 acres and being in Louisville Metro as more particularly described in the minutes and records of the Planning Commission in Case No. 14STREETS1024 and as shown on the attached plat be closed, subject to all existing easements of record and all existing utility easements or rights enjoyed by said utility companies as the result of being located in, on or over said right-of-way.

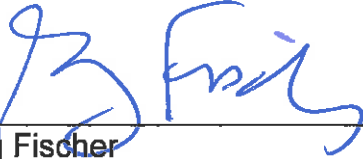
Section II: This Ordinance shall take effect upon its passage and approval.



H. Stephen Ott
Metro Council Clerk



David W. Tandy
President of the Council



Greg Fischer
Mayor

Approved:
Date

4/29/15

APPROVED AS TO FORM AND LEGALITY:

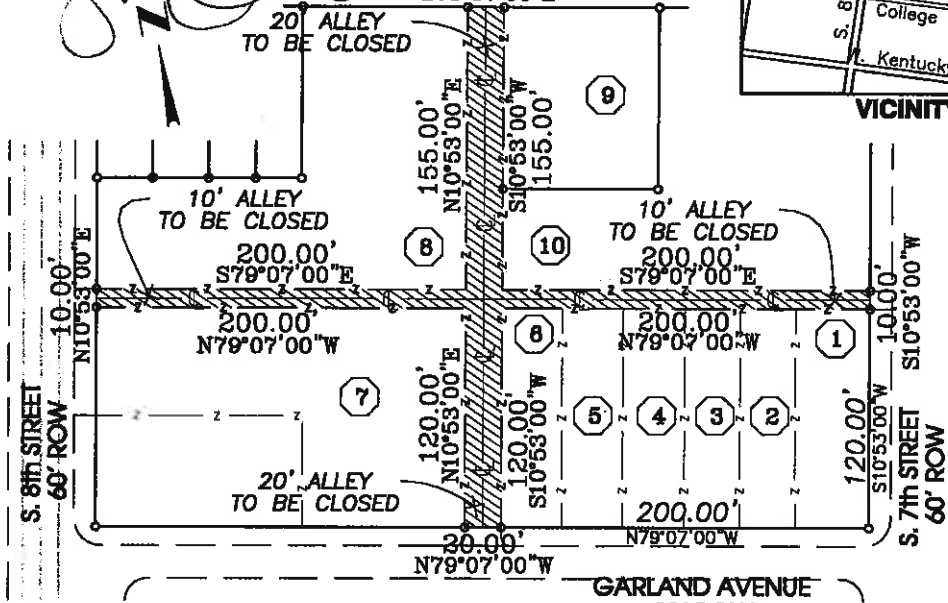
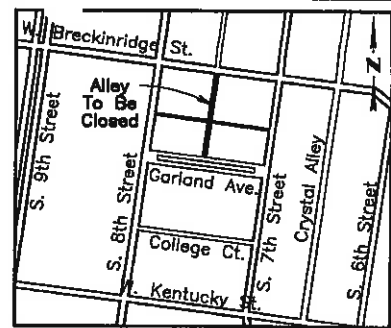
Michael J. O'Connell
Jefferson County Attorney

By: 



APPROVED:
LOUISVILLE METRO PLANNING
COMMISSION

DATE 05/19/14 BY [Signature]
 W. BRECKINRIDGE STREET
 60' ROW 20.00'
 S79°07'00"E



- | | |
|--|---|
| 1 Dover Energy, Inc
P.O. Box 1038
Louisville, KY 40201
DB 5554 PG 466 | 6 Dover Energy, Inc
P.O. Box 1038
Louisville, KY 40201
DB 5554 PG 461 |
| 2 Dover Energy, Inc
P.O. Box 1038
Louisville, KY 40201
DB 5554 PG 468 | 7 Dover Energy, Inc.
P.O. Box 1038
Louisville, KY 40201
DB 5554 PG 445 |
| 3 Dover Energy, Inc
P.O. Box 1038
Louisville, KY 40201
DB 5554 PG 470 | 8 Hollingsworth Properties Inc.
P.O. Box 1731
Louisville, KY 40201 --1731
DB 9075 PG 151 |
| 4 Dover Energy, Inc
P.O. Box 1038
Louisville, KY 40201
DB 5554 PG 463 | 9 900 7th Street, LLC
1016 West Hollywood Avenue
Apt 102
Chicago, IL 60660-4501
DB 9163 PG 901 |
| 5 Dover Energy, Inc
P.O. Box 1038
Louisville, KY 40201
DB 5554 PG 430 | 10 900 7th Street, LLC
1016 West Hollywood Avenue,
Apt. 102
Chicago, IL 60660-4501
DB 9163 PG 901 |

NOTES
 The subject property is being re-zoned from OR2 to CM, and is in the Traditional Neighborhood Form District.

10' Alley, closure being 155' south of West Breckinridge St. from 7th Street continuing west to 8th Street.

20' Alley, closure being 200' east of 7th Street from W. Breckinridge St. continuing south to Garland Ave.

R.O.W. being closed to shall be conveyed to the adjoining property owners.

All lots abutting the R.O.W. being closed, shall be consolidated with respective portions of this street closure.

Properties 1, 2, 3, 4, 5, & 6 to be consolidated with respective portions of this street closure.

Related Cases:
 14ZONE1044

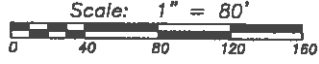
Plat Prepared by:
MPSL Group LLC
 2802 Heather Green Blvd.
 LaGrange, KY 40031
 (502) 931-3446

LAND SURVEYOR'S
CERTIFICATE

I hereby certify that this plat was made under my supervision and that the angular and linear measurements shown thereon are correct to the best of my knowledge and belief. This plat meets or exceeds the minimum standards of governing authorities.



Joseph W Scannell
 JOSEPH W. SCANNELL P.L.S. #3441 Date



ALLEY CLOSURE PLAT

The purpose of this plat is to close a 10' Alley from W Breckinridge St. south to Garland Ave. & a 20' Alley from S. 7th St. west to S 8th St.

Site Address:
 701-713 Garland Avenue
Applicant:
 Lichtefeld Development Trust
 908 S. 8th Street, Suite 102
 Louisville, KY 40203

ALLEY CLOSURE
 For
Lichtefeld Development Trust

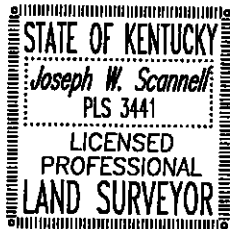
ALEX ROSENBERG P.E.
 Civil Engineering &
 Land Development Services
 2518 Hermitage Way
 Louisville, Kentucky 40242
 (502) 817-4444 Cell
 (502) 254-2243 Off.

14STREETS1024

Alley Closure Description

Beginning at the Northwest corner of Seventh Street and Garland Avenue (formerly Florence Place), thence along Garland Avenue 200 feet west of Seventh Street to the Point of Beginning; thence North 79°07'00" West, a distance of 20.00 feet; thence North 10°53'00" East, a distance of 120.00 feet; thence North 79°07'00" West, a distance of 200.00 feet; thence North 10°53'00" East, a distance of 10.00 feet; thence South 79°07'00" East, a distance of 200.00 feet; thence North 10°53'00" East, a distance of 155.00 feet; thence South 79°07'00" East, a distance of 20.00 feet; thence South 10°53'00" West, a distance of 155.00 feet; thence South 79°07'00" East, a distance of 200.00 feet; thence South 10°53'00" West, a distance of 10.00 feet; thence North 79°07'00" West, a distance of 200.00 feet; thence South 10°53'00" West, a distance of 120.00 feet to the Point of Beginning.

Containing 0.22 ACRES, more or less.



RECEIVED

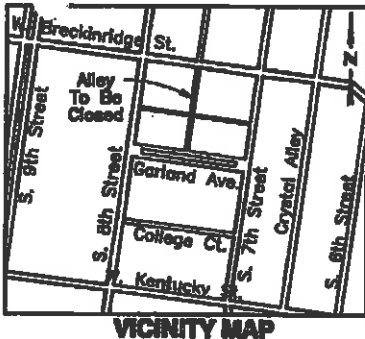
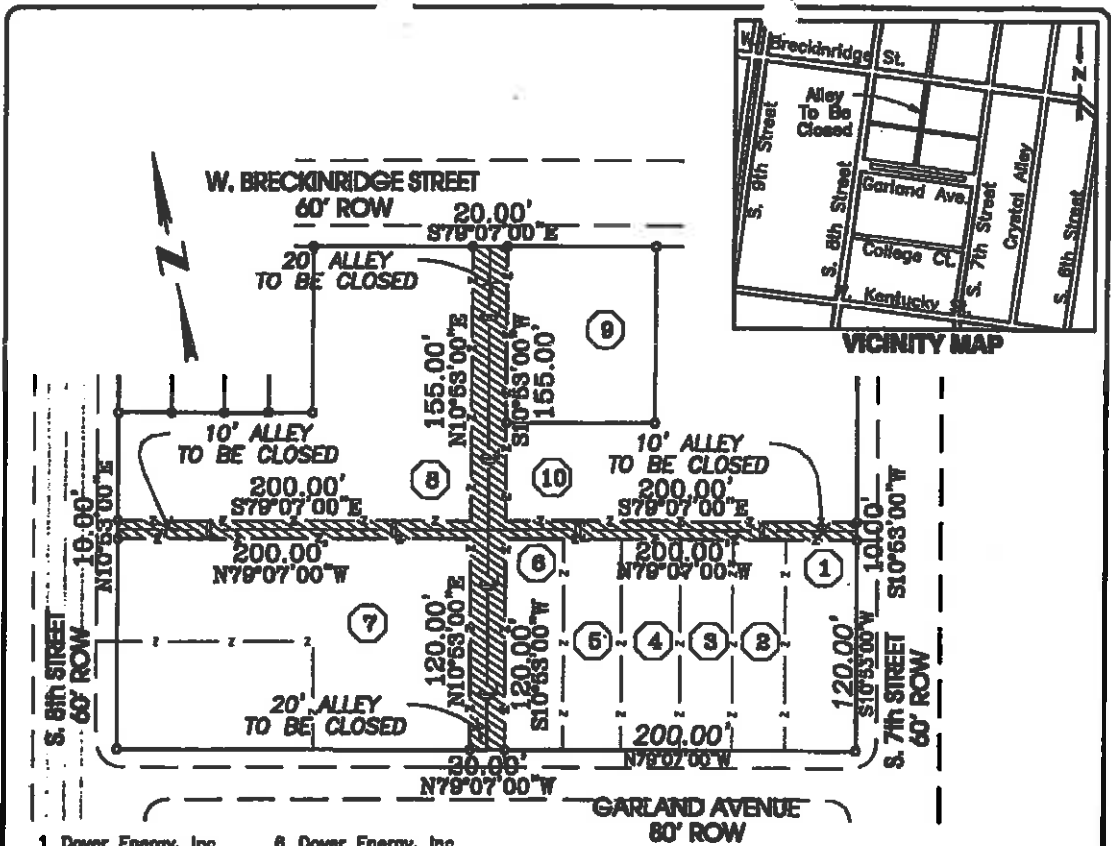
NOV 07 2014

PLANNING &
DESIGN SERVICES

Joseph W Scannell

JOSEPH W. SCANNELL P.L.S. #3441 Date
MPSL Group LLC
3501 Arrowwood Court
Louisville, KY 40031
(502) 931-3446

14 STREETS 1024



- | | |
|--|---|
| 1 Dover Energy, Inc
P.O. Box 1038
Louisville, KY 40201
DB 5554 PG 468 | 6 Dover Energy, Inc
P.O. Box 1038
Louisville, KY 40201
DB 5554 PG 481 |
| 2 Dover Energy, Inc
P.O. Box 1038
Louisville, KY 40201
DB 5554 PG 468 | 7 Dover Energy, Inc.
P.O. Box 1038
Louisville, KY 40201
DB 5554 PG 445 |
| 3 Dover Energy, Inc
P.O. Box 1038
Louisville, KY 40201
DB 5554 PG 470 | 8 Hollingsworth Properties Inc.
P.O. Box 1731
Louisville, KY 40201 -1731
DB 8075 PG 151 |
| 4 Dover Energy, Inc
P.O. Box 1038
Louisville, KY 40201
DB 5554 PG 463 | 9 900 7th Street, LLC
1016 West Hollywood Avenue
Apt 102
Chicago, IL 60860-4501
DB 9183 PG 901 |
| 5 Dover Energy, Inc
P.O. Box 1038
Louisville, KY 40201
DB 5554 PG 430 | 10 900 7th Street, LLC
1016 West Hollywood Avenue,
Apt. 102
Chicago, IL 60860-4501
DB 9183 PG 901 |

NOTES

The subject property is being re-zoned from OR2 to CM, and is in the Traditional Neighborhood Form District.

10' Alley, closure being 155' south of West Breckinridge St. from 7th Street continuing west to 8th Street.

20' Alley, closure being 200' east of 7th Street from W. Breckinridge St. continuing south to Garland Ave.

R.O.W. being closed to shall be conveyed to the adjoining property owners.

All lots abutting the R.O.W. being closed, shall be consolidated with respective portions of this street closure.

Properties 1, 2, 3, 4, 5, & 6 to be consolidated with respective portions of this street closure.

Related Cases:
14ZONE1044

Plat Prepared by:
MPSL Group LLC
2802 Heather Green Blvd.
LaGrange, KY 40031
(502) 931-3448

LAND SURVEYOR'S CERTIFICATE

I hereby certify that this plat was made under my supervision and that the angular and linear measurements shown thereon are correct to the best of my knowledge and belief. This plat meets or exceeds the minimum standards of governing authorities.



Joseph W. Scannell
JOSEPH W. SCANNELL P.L.S. #3441 Date



ALLEY CLOSURE PLAT
The purpose of this plat is to close a 10' Alley from W Breckinridge St. south to Garland Ave. & a 20' Alley from S. 7th St. west to S 8th St.

Site Address:
701-713 Garland Avenue
Applicant:
Lichtefeld Development Trust
808 S. 8th Street, Suite 102
Louisville, KY 40203

ALLEY CLOSURE
For
Lichtefeld Development Trust

ALEX ROSENBERG P.E.
Civil Engineering &
Land Development Services
2518 Hemmingway Hwy
Louisville, Kentucky 40242
(502) 817-4444 Cell
(502) 254-2245 Off.

Acct: 2014-452 Date: Nov. 03, 2014 Reference: DB 5554 PG 466 Tax Block, Lot, Sublot: 029E 0020 0000 Page 1 of 1 Scale: 1" = 80'

14 STREETS 1021