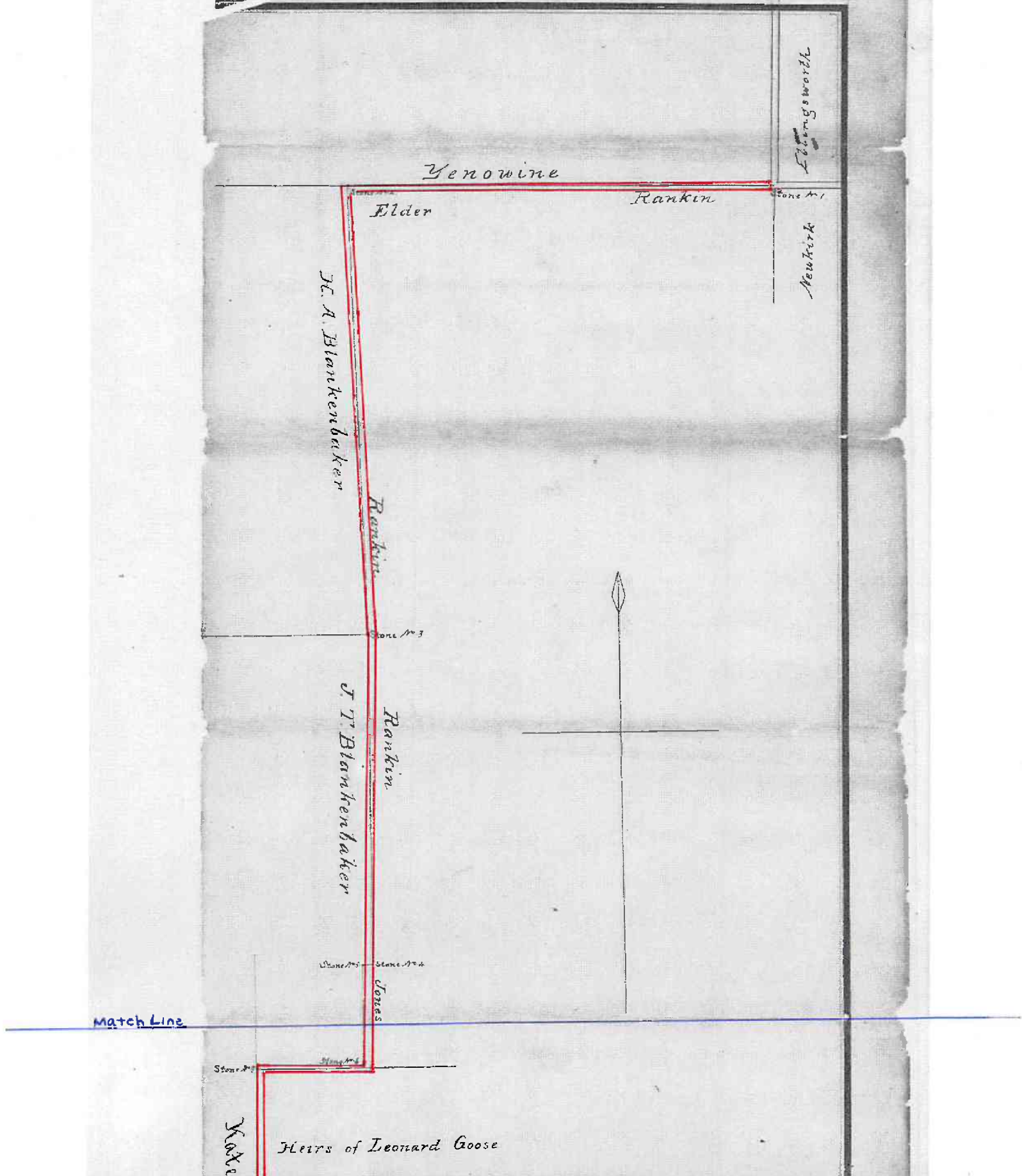


Attachment A



Stone #1 Stone #2

Moore

Heirs of Leonard Goose

PLAT of ROAD

Proposed in Petition of
Blankenbaker et al.

Viewed and Surveyed
under order of
Jefferson County Court,
April 11, 1895

Significant Fences shown in Black.
Proposed Road shown in Red.
Suggested Improvement of Location in Red Dots.

SCALE

1 inch = 400 feet

Hari Vance, Surveyor of Jefferson County.

Stone #3

Smathers

John Goose

Stone #4

John Goose

Stone #5

Stone #6

F

W. Goose

Stone #7

John S. Vance
Surveyor