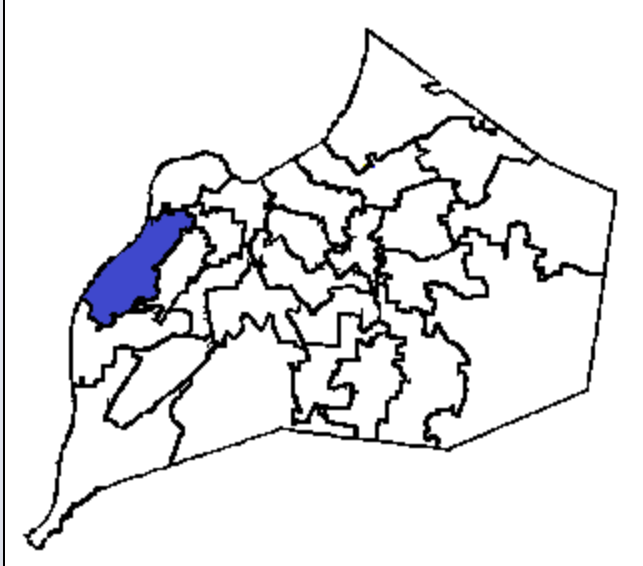
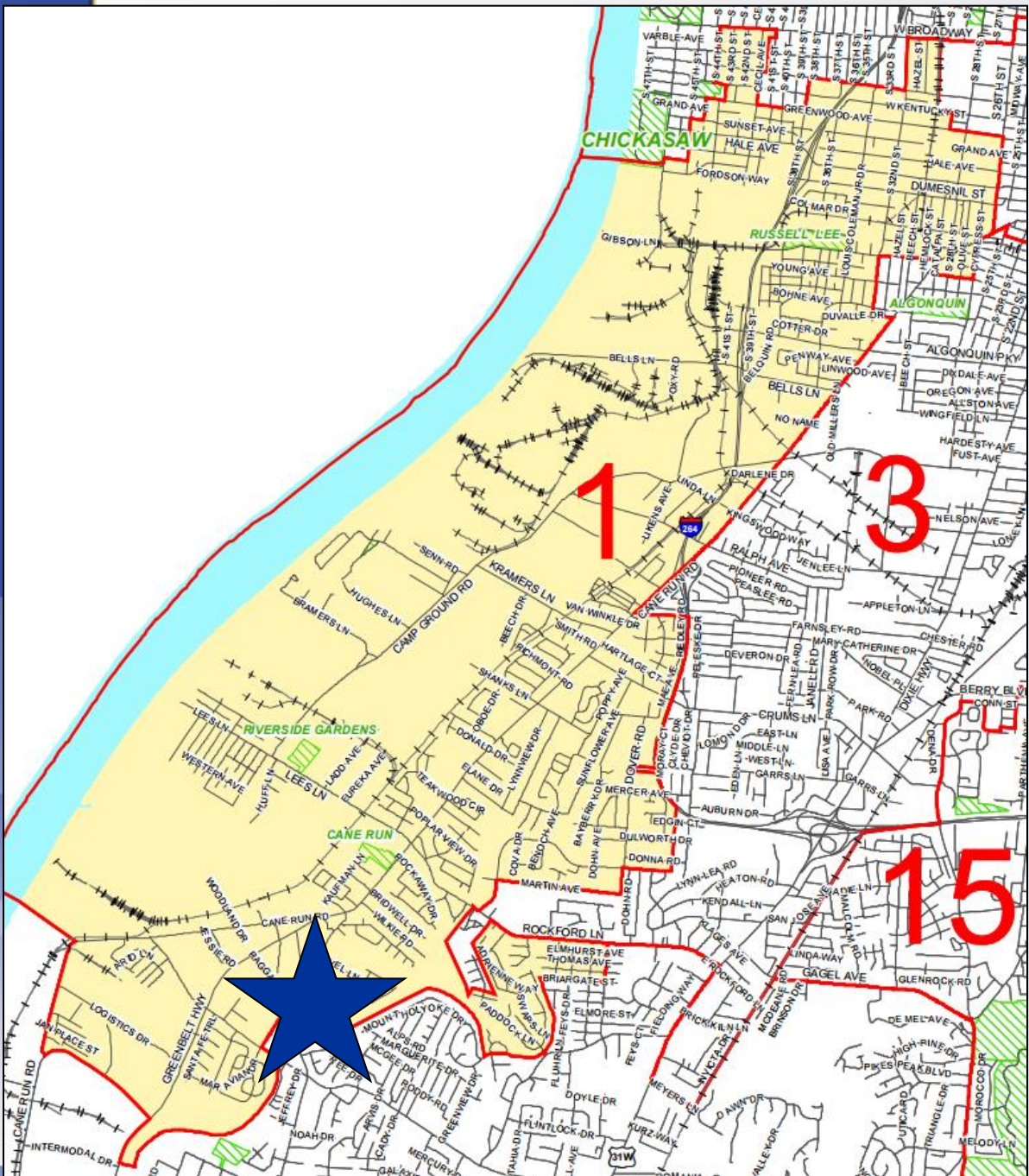


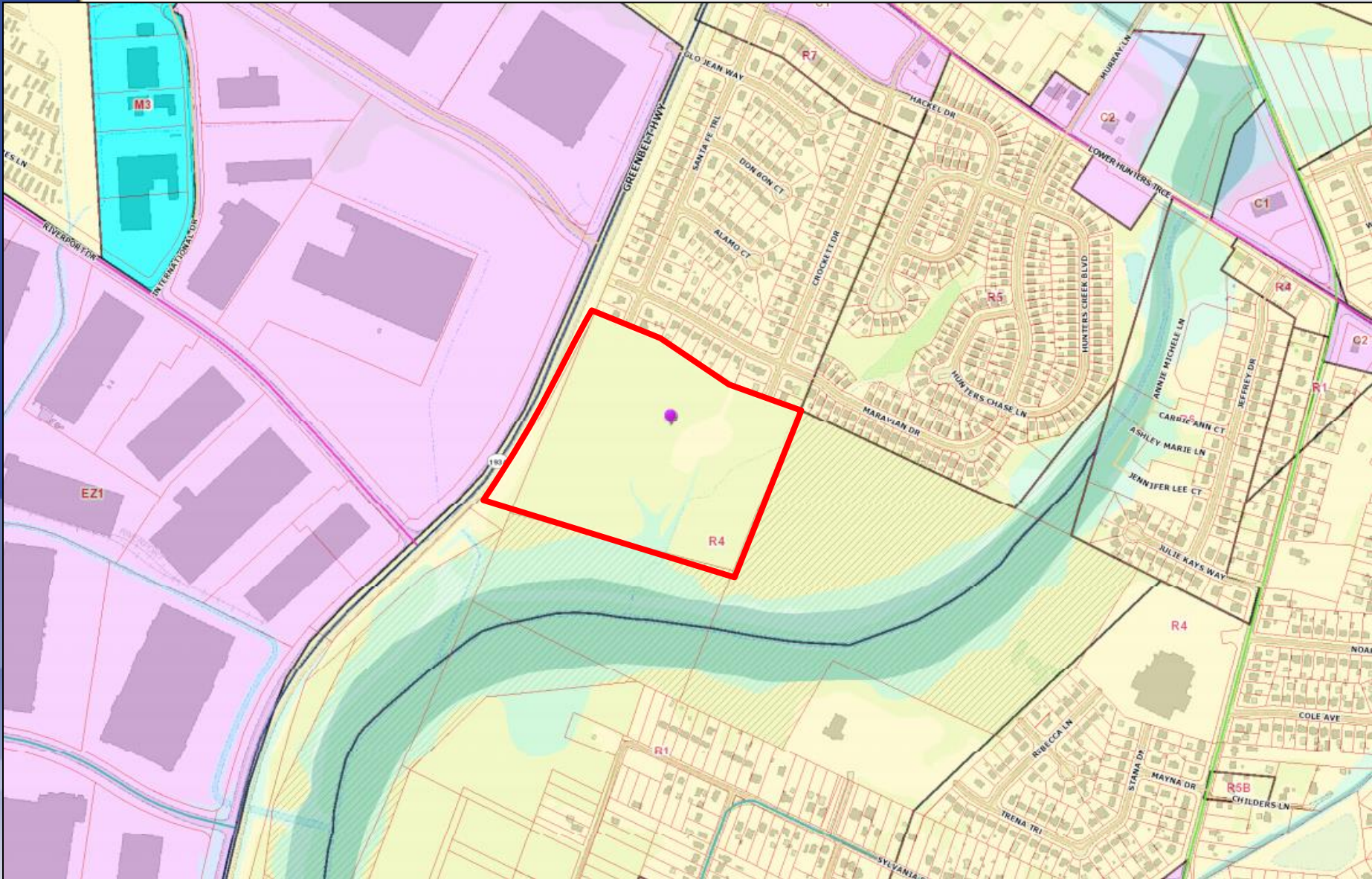
16ZONE1072 GREENBELT WAREHOUSE



Planning, Zoning & Annexation Committee
April 17, 2018



7001 Greenbelt Highway
 District 1 -
 Jessica Green



Existing: R-4/N
Proposed: EZ-1/SW



Requests

- Change in Zoning from R-4 Single-Family Residential to EZ-1 Enterprise Zone on 27.21 acres
- Change in Form District from Neighborhood to Suburban Workplace
- Waiver of Section 5.5.4.B.1 to not provide the 6' berm along all property lines
- Detailed District Development Plan with Binding Elements

Case Summary

- Site consists of two parcels, totaling 27.21 acres
- Located just east of Riverport industrial area
- Proposed 271,250 square foot warehouse
- Two access points from Greenbelt Highway

Subject Site



Surrounding Area Photos



Surrounding Area Photos



Surrounding Area Photos

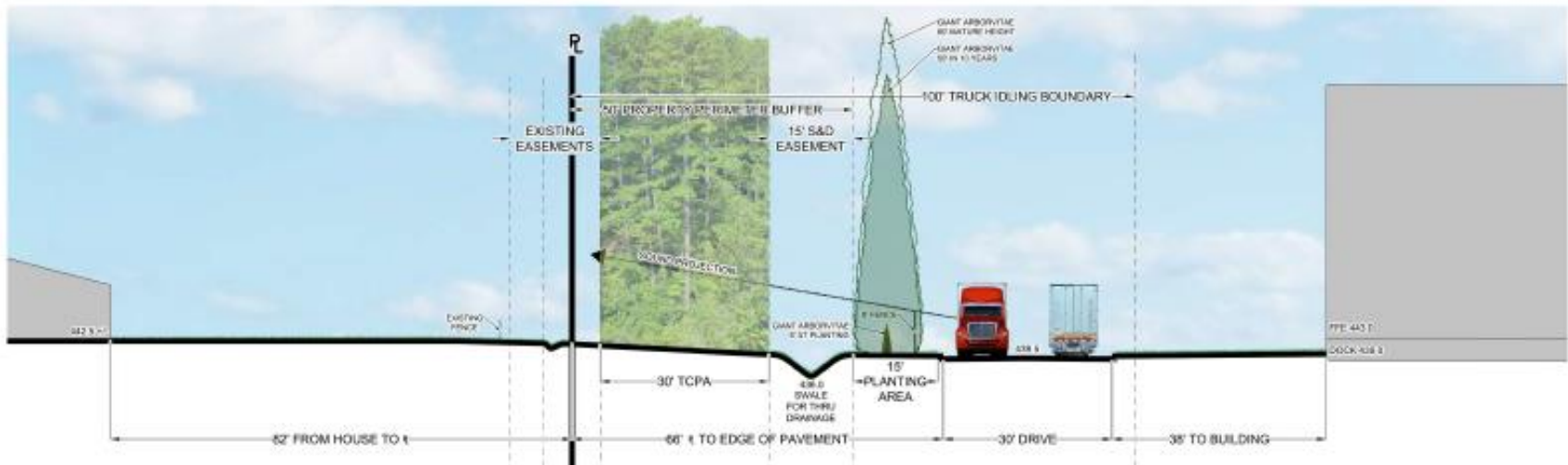
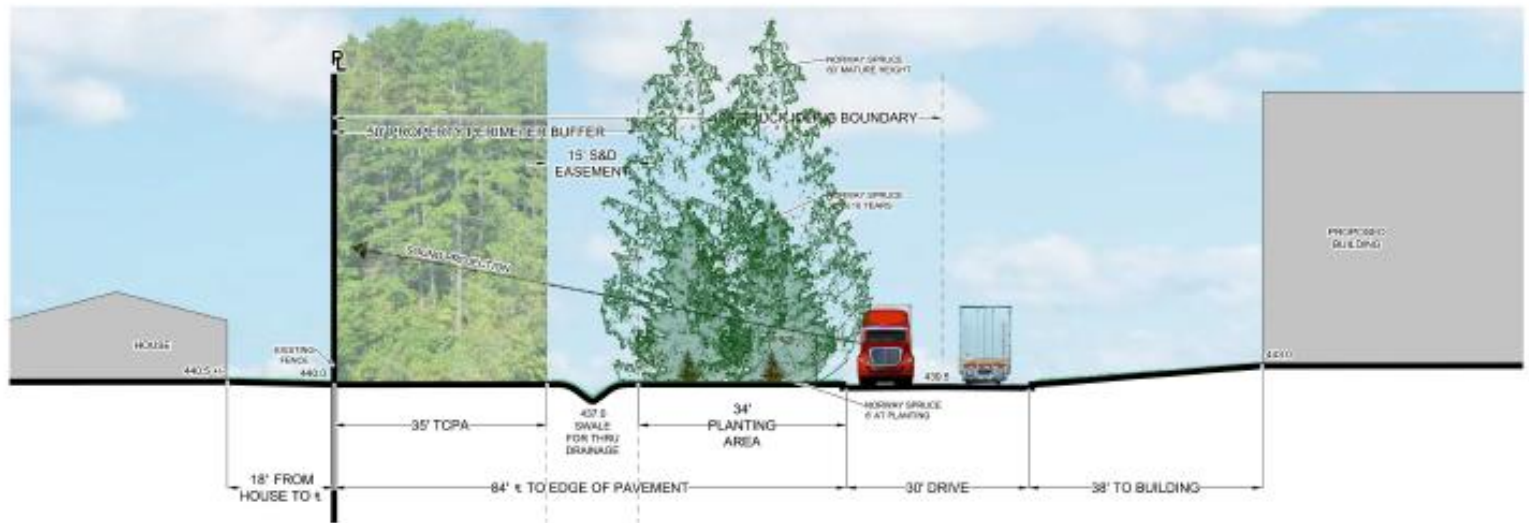


Louisville

16ZONE1072







Public Meetings

- Neighborhood Meeting on 11/28/2016
 - Conducted by the applicant, nine people attended the meeting
- LD&T meetings on 4/27/2017, 5/25/2017, and 2/22/2018
- Planning Commission public hearing on 3/15/2018
 - Two people spoke in opposition.
 - The Commission recommended approval of the change in zoning from R-4 to EZ-1 and change in form district from Neighborhood to Suburban Workplace with a vote of 8-0 (two members were not present).