

Dixie Apartments

River City Housing

10615 South Dixie Highway

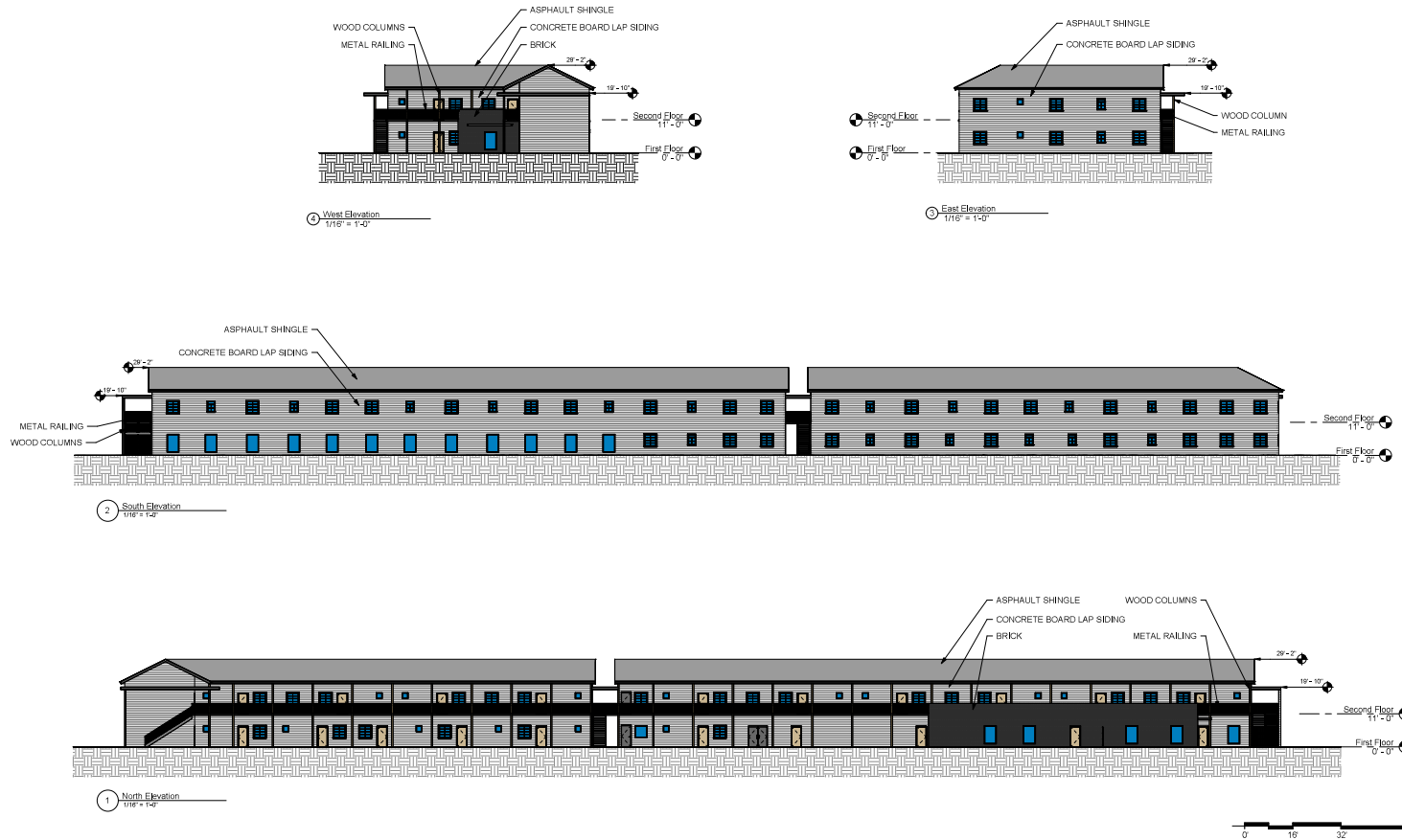


K NORMAN BERRY
ASSOCIATES
ARCHITECTS

KEY PLAN



NO.	DATE	DESCRIPTION



Architect:
K. NORMAN BERRY
ASSOCIATES ARCHITECTS PLLC
815 W. Market Street, Ste. 815
Louisville, KY 40202
502.582.2500
Engineer:
KERI-GREULICH ENGINEERS, INC.
1534 Ormsby Station Court
Louisville, KY 40223
502.458.9457
Landscape & Civil Engineer:
SABAK, WILSON & LINGO, INC.
608 S. Third Street
Louisville, KY 40202
502.584.6271

Sheet Title:
Building Elevations

Project Number 210580
Drawn By ES
Approved By BH
Date 230330

Revisions:
.
.
.
.
.

230330 BOZA Hearing
A200
3/30/2023 1:48:28 PM
23-CAT-0007