

Inflow/Outflow Analysis

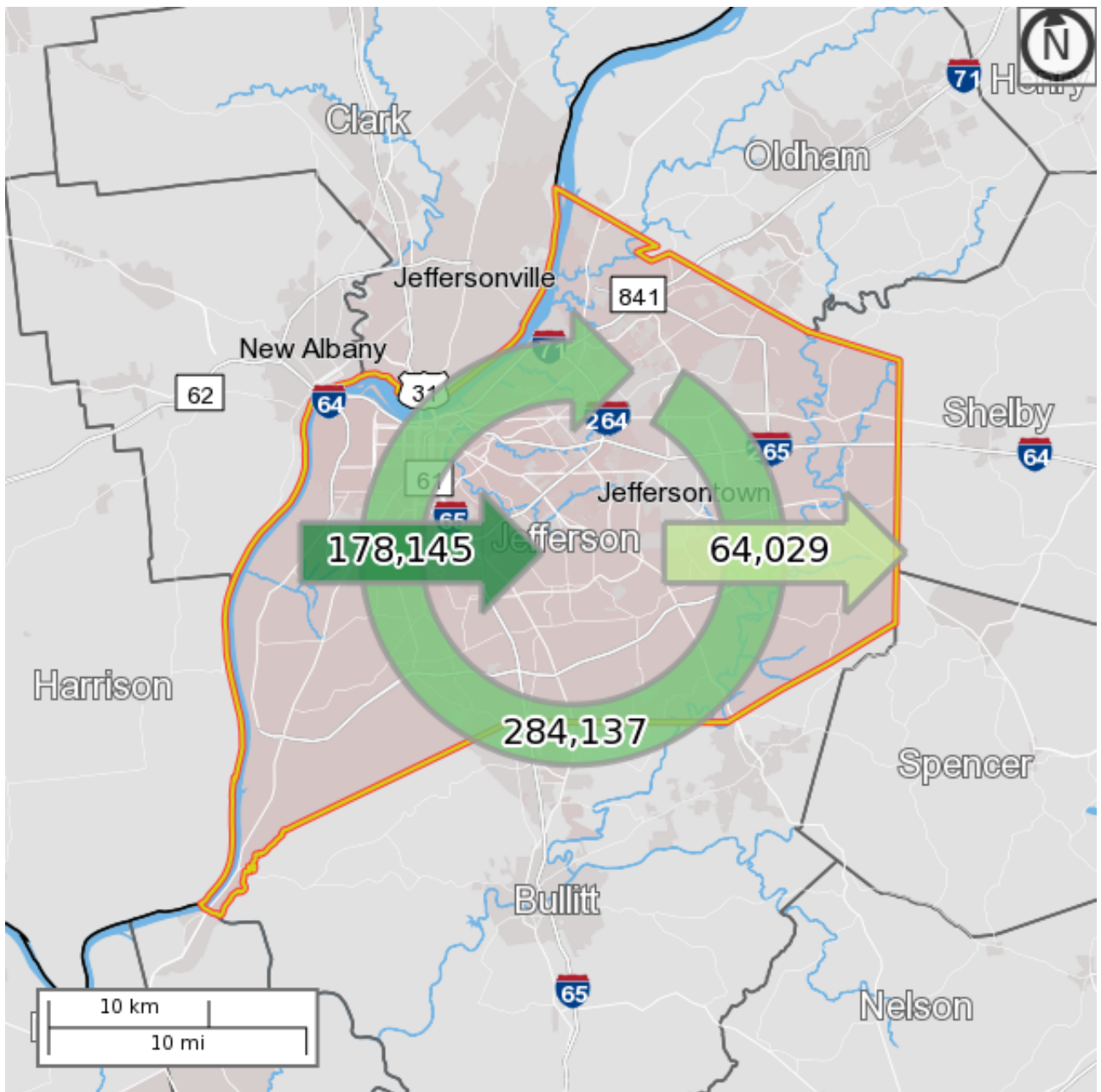
Jefferson County, KY from Counties

Settings

Labor Market Segment Filter All Workers

Update

Map



Legend

Note: Overlay arrows do not indicate directionality of worker flow between home and employment locations.

- ➔ Employed and Live in Selection Area
- ➔ Employed in Selection Area, Live Outside
- ➔ Live in Selection Area, Employed Outside

N Analysis Selection

Chart

Inflow/Outflow Job Counts in 2014



- 178,145 - Employed in Selection Area, Live Outside
- 64,029 - Live in Selection Area, Employed Outside
- 284,137 - Employed and Live in Selection Area

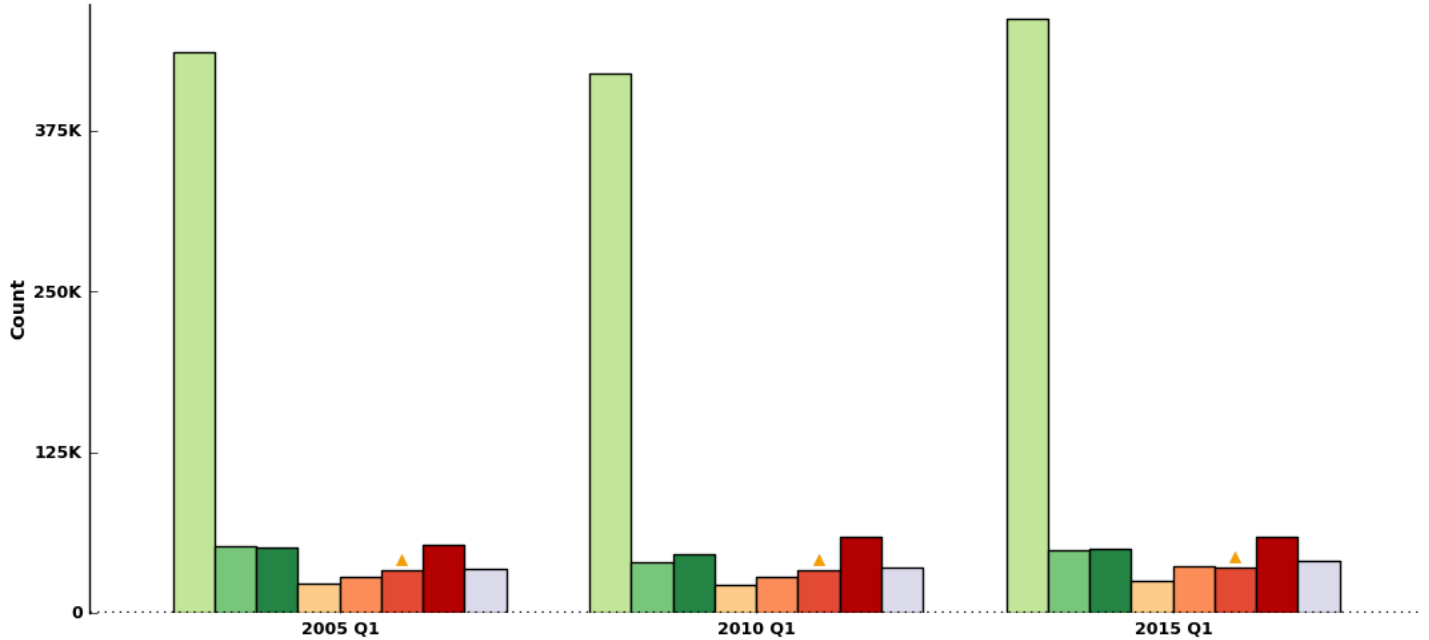
Inflow/Outflow Job Counts (All Jobs)

	2014	
	Count	Share
Employed in the Selection Area	462,282	100.0%
Employed in the Selection Area but Living Outside	178,145	38.5%
Employed and Living in the Selection Area	284,137	61.5%
Living in the Selection Area	348,166	100.0%
Living in the Selection Area but Employed Outside	64,029	18.4%
Living and Employed in the Selection Area	284,137	81.6%

[Reset Highlighting](#)

Jefferson, KY's Beginning of Quarter Employment: Counts by NAICS Sectors

Time: Selected Quarters: 2005 Q1 - 2015 Q1

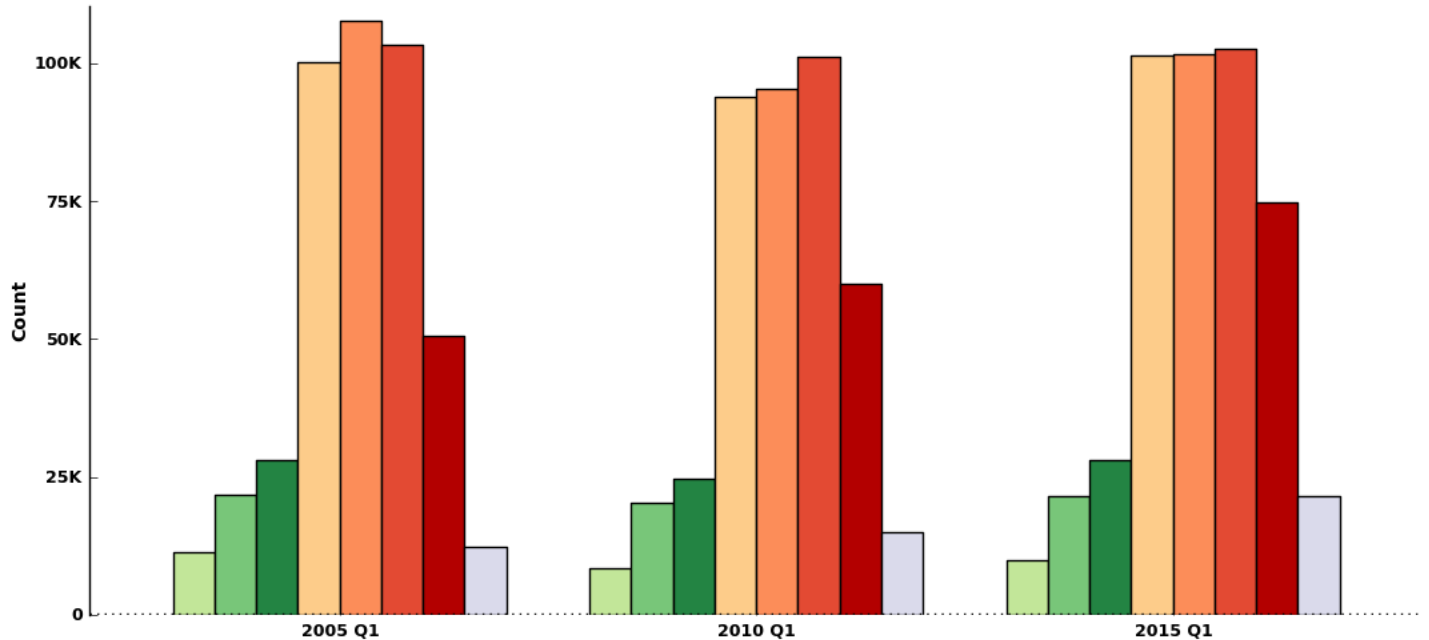


	All NAICS Sectors	Manufacturing	Retail Trade	Professional, Scientific, and Technical Services
2005 Q1	435,448	51,922	50,335	22,789
2010 Q1	418,803	39,456	46,016	21,869
2015 Q1	461,739	49,133	49,390	25,171

	Administrative and Support and Waste Management and Remediation Services	Educational Services	Health Care and Social Assistance	Accommodation and Food Services
2005 Q1	27,730	33,037	53,121	33,969
2010 Q1	27,945	33,573	59,008	35,278
2015 Q1	36,551	35,044	59,141	40,056

Jefferson, KY's Beginning of Quarter Employment: Counts by Worker Age

Time: Selected Quarters: 2005 Q1 - 2015 Q1

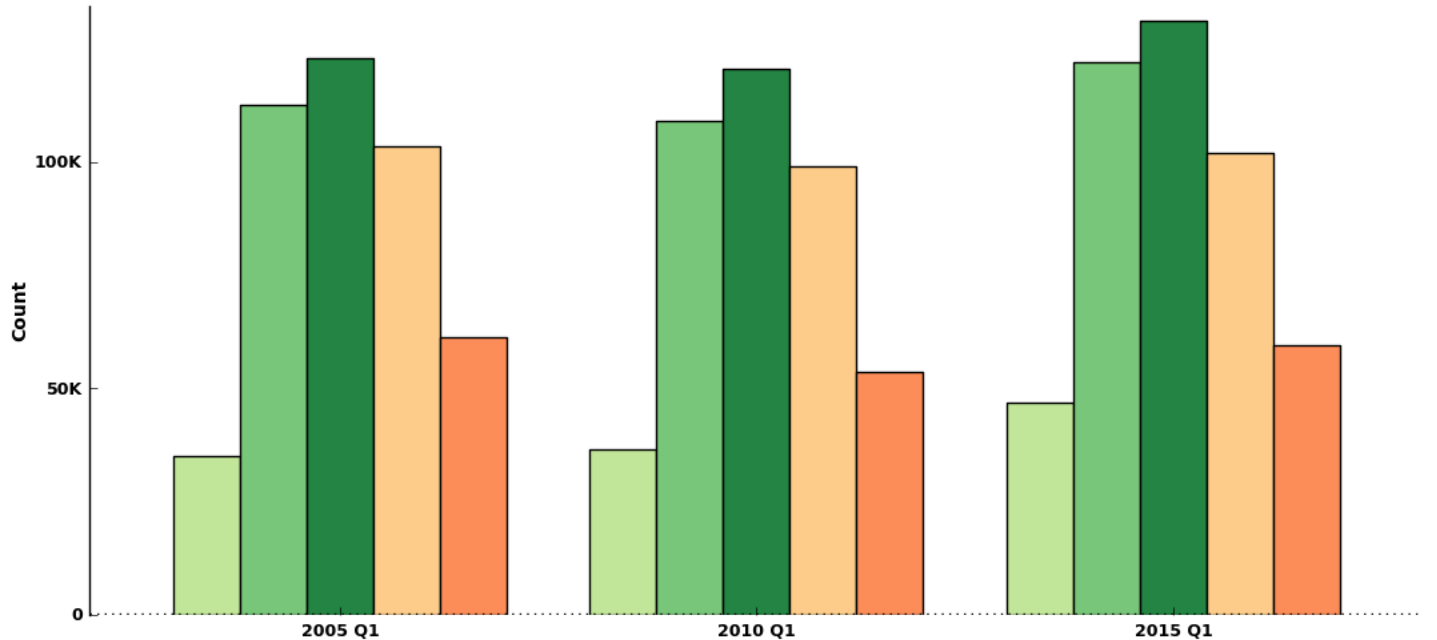


	14-18	19-21	22-24	25-34	35-44
2005 Q1	11,307	21,825	28,140	100,124	107,685
2010 Q1	8,415	20,311	24,757	93,970	95,255
2015 Q1	9,999	21,510	28,075	101,431	101,729

	45-54	55-64	65-99
2005 Q1	103,298	50,662	12,406
2010 Q1	101,212	59,890	14,994
2015 Q1	102,707	74,826	21,463

Jefferson, KY's Beginning of Quarter Employment: Counts by Worker Education

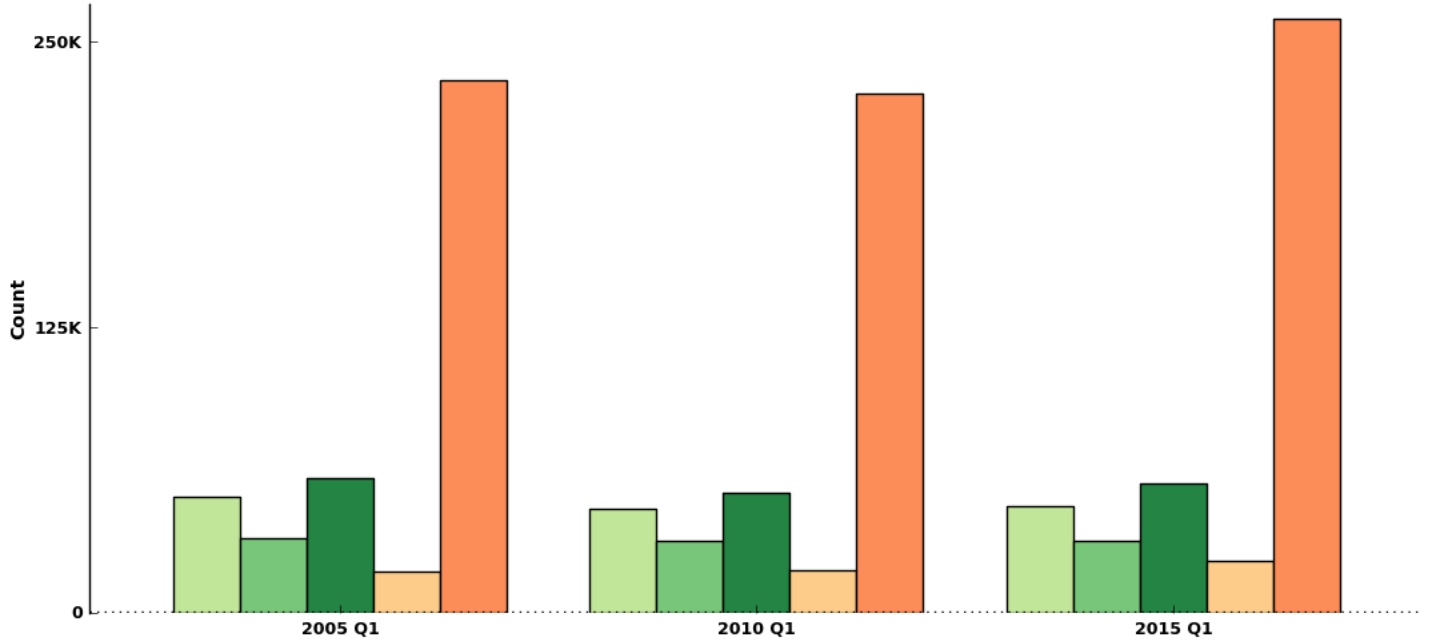
Time: Selected Quarters: 2005 Q1 - 2015 Q1



	Less than high school	High school or equivalent, no college	Some college or Associate degree	Bachelor's degree or advanced degree	Educational attainment not available (workers aged 24 or younger)
2005 Q1	35,158	112,583	122,876	103,558	61,273
2010 Q1	36,666	109,156	120,610	98,888	53,482
2015 Q1	46,966	122,014	131,120	102,055	59,584

Jefferson, KY's Beginning of Quarter Employment: Counts by Firm Size

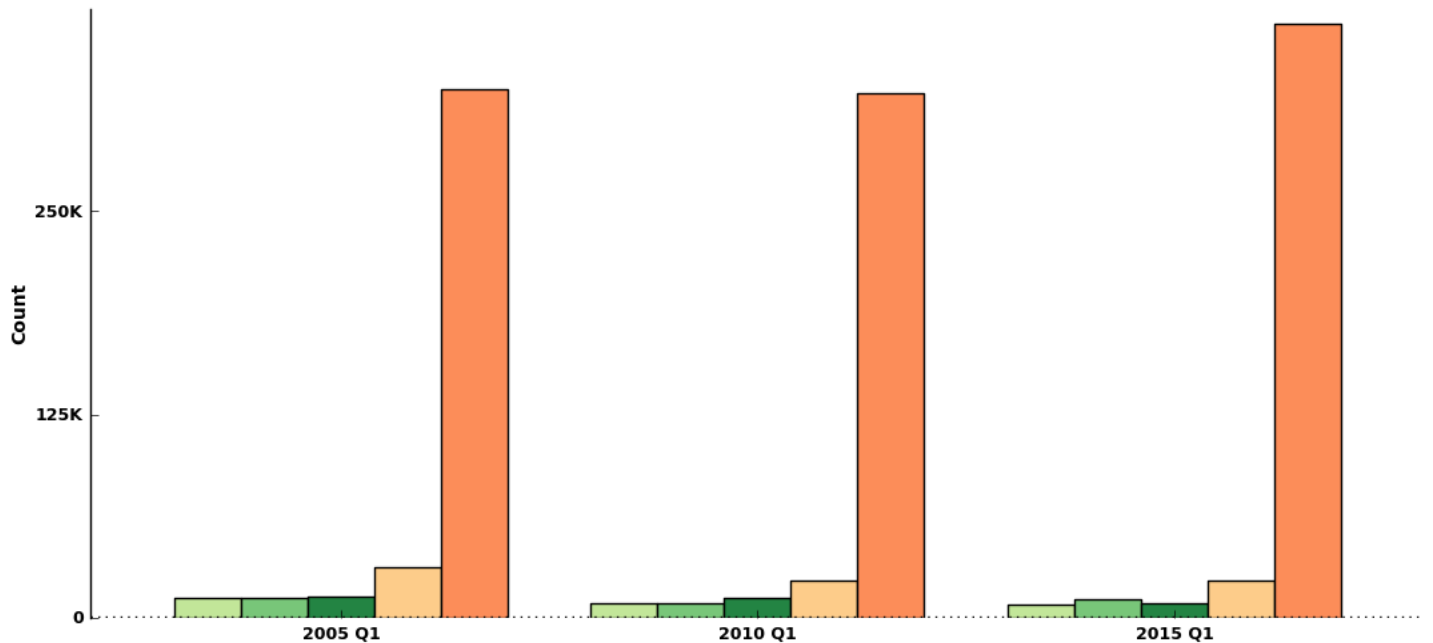
Time: Selected Quarters: 2005 Q1 - 2015 Q1



	0-19 Employees	20-49 Employees	50-249 Employees	250-499 Employees	500+ Employees
2005 Q1	50,590	32,730	58,976	18,168	232,988
2010 Q1	45,500	31,722	52,735	18,649	227,360
2015 Q1	46,589	31,630	56,831	22,809	260,014

Jefferson, KY's Beginning of Quarter Employment: Counts by Firm Age

Time: Selected Quarters: 2005 Q1 - 2015 Q1



	0-1 Years	2-3 Years	4-5 Years	6-10 Years	11+ Years
2005 Q1	11,916	12,106	13,147	31,428	324,855
2010 Q1	9,413	8,632	12,046	23,103	322,772
2015 Q1	8,571	11,689	9,077	23,356	365,179