

Sign

Valhalla Golf Club

60

Shelbyville Rd

Johnson Rd

65

Flat Rock Rd

Long Run Rd

1531

102

Long Run Rd

47

Boston

45

60

30

65

355

60

EASTWOOD

Echo Trail Rd

Shelbyville Park

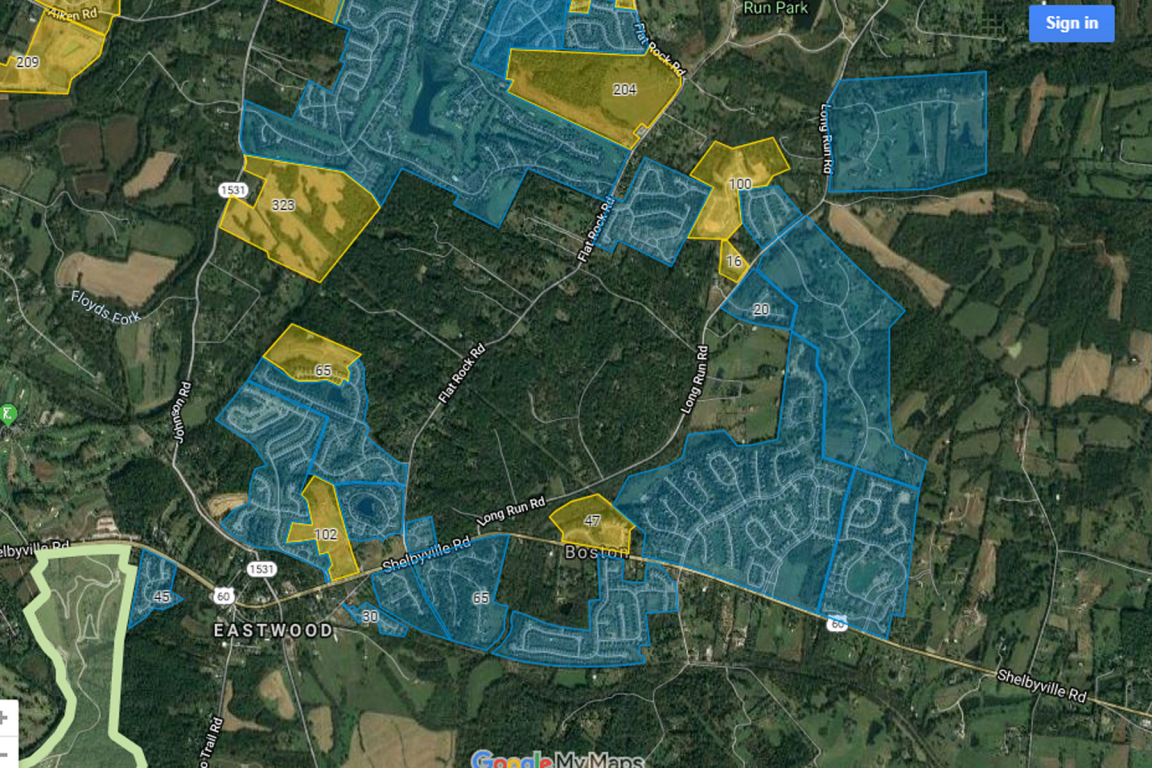
64

64

64

1531

SHAKES RUN





Newsletter

Edition 1

August 2019

Letter from the Chairman:

Welcome to the inaugural edition of the Eastwood Village Council Newsletter. If you are receiving this via email, we thank you for signing up. If through any other media, we urge you to visit our website at www.eastwoodvillagecouncil.com and use our "Resident Signup" tab to add your email contact info to receive future installments of the Newsletter. I hope you will take a moment and go through the Newsletter in order to better understand the Council's mission.

The Eastwood Village Council (EVC) was developed as an advocacy organization in 2005 to assure Eastwood and its surrounding areas continue to grow as a great place to live. We strive to balance controlled growth with area preservation, while ensuring it is planned and executed with vision and that infrastructure needs are met to support that growth. We represent the needs of all local residents and understand the importance of all land uses, including the village center concept, less dense neighborhood areas and the rural farm lands. We support tree canopy preservation and all efforts to preserve Floyds Fork.

To that end, the EVC works with state and local officials, KYTC, Louisville Metro, the Mayor's office and the Louisville Planning Commission to make sure the needs of the community are heard and addressed as new subdivisions are considered and planned. The EVC regularly attends neighborhood meetings organized by developers, reviews their pre-applications that are provided to Planning and Design Services (DPDS) and we are a voice at the Planning Commission Meetings where the approval process takes place. We create position papers and conduct presentations as a constant reminder to the Planning Commission that new growth cannot move forward in a vacuum.

The EVC also works to bring attention to the Eastwood area and sponsors Events / Activities that ultimately enrich the area for all residents. This includes the Eastwood Village Farmers Market, the Eastwood Art and Crafts Fair and the Farm to Fork Dinner. Details of these events are included within the Newsletter.

Some of the most notable recent achievements of the EVC include:

- Negotiating the addition of a barrier wall for the electric substation next to the Eastwood Fire Station
- Negotiating the redesign of Bryant Farms Subdivision on US60 to address front facing homes
- Getting commitment for turn lanes at Johnson Rd to improve safety
- Getting commitment for \$250,000 for Planning / Design of Eastwood Cutoff to US60 intersection as part of the Echo Trail Subdivision approval process
- Most recently, the EVC, working with both State and Local representatives are addressing the widening of US60 (Shelbyville Rd) through the Eastwood corridor project. We hope to have that "final approval" later this year.

For all that the EVC participates in, we look to the help of the community, as we are funded by Membership fees and donations from the area community.

Again, I would like to Thank You for taking the time to go through this Newsletter. The EVC welcomes all input from residents. We have regularly scheduled Open Meetings the second Tuesday of every month at 6:30 PM at the Eastwood Firehouse and urge everyone to attend. We are always looking for new people to join the Council, join a committee, become a volunteer or even an HOA or Subdivision representative.

Sincerely,

Bob Federico, Chairman Eastwood Village Council

THE EASTWOOD VILLAGE
Farmer's Market
AT THE PARKLANDS
Herb



The Eastwood Village Farmers' Market at The Parklands is having a banner year. We are at 25 vendors and are still adding more almost every week. We observed First Responders Appreciation Day a few weeks ago and the Eastwood Fire Dept. came and spent the day with us. The kids loved sitting in the fire truck!

The community support has been off the charts with an average attendance of over 800 per week. Our farmers couldn't be more pleased.

We will end this season on Sept. 28th. This day will be extra special. Like last year we are combining the Market with the Eastwood Village Council's Arts & Crafts Fair. See the article by Ann Neely for the details.

Again, a big thank you to our community for the overwhelming support!

Just a reminder, the EVC Farmers Market is open every Saturday Morning from 8am to 12 noon. Just follow the signs at the entrance to the Parklands.

COME CELEBRATE HOMEGROWN & HANDMADE
AT THE 2ND ANNUAL

Arts  Crafts

FAIR DAY

Sept. 28th | 9 AM - 3 PM

@ North Beckley Creek Park

(follow the signs @ the Shebyville Rd Entrance)

- Kids Pumpkin Patch
 - Face Painting
 - Over 50 Vendors
 - Arts & Crafts
- Artisan Breads & Cheeses
- 4 Food Trucks
 - Wine Slushies
 - Beer Booth
- Farm Fresh Veggies & Eggs
- Fresh Cut Flowers

& Live Entertainment

BROUGHT TO YOU BY

THE EASTWOOD VILLAGE

Farmer's Market

AT THE PARKLANDS



AND OUR AMAZING SPONSORS



A KENTUCKY PROUD EVENT



EASTWOOD VILLAGE
FARM 2 FORK
DINNER

Love Your Farmer, Love Your Food

October 5th
6:00 pm - 11:00 pm

**Hockensmith Barn
at Turkey Run Park
8701 Stout Rd.**

**Only
200 Tickets Available**

\$80.⁰⁰ Per Person
2 Drink Tickets Included

Louisville  Powered by **red pin**
TICKETS media

**The Eastwood
Village Council**



Menu

**Cocktails & Hors d'oeuvres
Tasting of local cheeses by Sapori Italia
Handcrafted small bites by the Block Gourmet Deli**

farmers' Basket Table

Display of tender greens and locally grown lettuces with an abundant selection of locally grown fruits and vegetables, pickled specialties, freshly baked artisan breads by Little Creek Farms and Red Barn Bakery, chef crafted salads, and homemade dressings

Entrées

**Smoked honey brined Heritage Breed Turkey from Bramble & Birds Farm
Paired with stone fruit gravy and cornbread dressing**

**Grass fed skirt steak chimichurri from Bluegrass Beef
Paired with cilantro radish slaw, brandy wine pico de gallo, fresh hand pressed tortillas**

**Slow roasted pork loin from Ashbourne Farms
Paired with tart apple relish, Kentucky vegetable hash**

**Red Jester braised all-natural chicken from Skinner Farms
Paired with gnocchi from Lexington Pasta, roasted local tomato and
black garlic butter sauce**

Wine pairings by Horseshoe Bend Winery

Bakers' Table

An Abundant Display of Cakes, Pies, Cookies, Candies and Sweets from Jac n' Jill Bakery, Red Barn Bakery, The Salted Baker, and Kandies of Kentucky. Coffee provided by Ground Up Coffee

Featuring Chef Brian Schack in Partnership with Our Farmers

Infrastructure Activities:

The EVC has been actively involved in infrastructure projects that affect the Eastwood and surrounding areas.

Working with Julie Denton (past Louisville Metro Rep), the EVC was instrumental in getting commitment to add Turn Lanes to the Johnson Road / US60 intersection. There have been numerous collisions and a recent fatality and hopefully this change will help to reduce that number. Currently, LGE is in the process of moving utilities and have encountered some unplanned issues. Our local Metro Council Rep along with the KYTC, are looking to address those and the Design / Plan stage for the turn lanes has been completed. While originally expected to complete in August, it is still expected before end of year.

We have also spent considerable time addressing the Eastwood Cutoff / US 60 intersection. We attended Planning Commission meetings to ensure they understood the critical need for a redesign and eventually, signaling of that intersection. We continue to work with State and Local representatives to keep that focus as new developments are planned that impact that already dangerous intersection.

The most recent focus has been on a Project to widen US60 from Rockcrest to the Eastwood Firehouse. The project has funding allocated but still needs final approvals from Frankfort. Part of that approvals process is known as SHIFT (State Highway Infrastructure For Tomorrow). Projects are ranked based on how well they meet transportation needs that include safety, congestion, job growth, fiscal responsibility and critical preservation needs.

The Eastwood US60 widening project, (thanks to EVC input and our District 36 State representatives help), has not only gone through the initial SHIFT phase but also received significant “boost” points in order to get it prioritized higher. Initial ranking was 35.7 (1 -100 with 100 being highest priority) but has been raised to 65.7.

We will continue to monitor that project and hopefully incorporate the Eastwood Cutoff intersection into that project.



**For more information on how to become a member,
see upcoming events or make a contribution,
visit our website at:**

www.eastwoodvillagecouncil.com



Eastwood Village Council

P.O. Box 92

Eastwood, Ky 40018-0092

