



1

AUGUST/2015  
by: DARNELL FARRIS  
R. KEVIN MILBURN

1209 GARVIN PLACE

HENSLEY RESIDENCE  
ADDITION PROPOSAL

RECEIVED  
AUG 14 2015  
PLANNING &  
DESIGN SERVICES

15COA1161

9

AUGUST / 2015  
by: DARNELL FARRIS  
R. KEVIN MILBURN

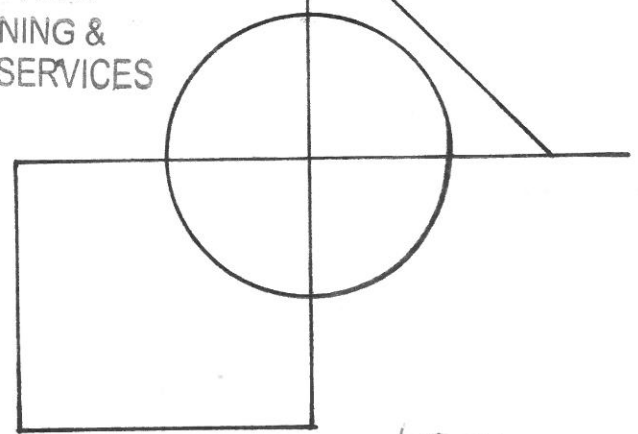
HENSLEY RESIDENCE  
ADDITION PROPOSAL

1209 GARVIN PLACE



WEST ELEVATION  
SCALE 1/8" ~ 1'-0"

RECEIVED  
AUG 14 2015  
PLANNING &  
DESIGN SERVICES



1500A1161

AUGUST/2015  
by: DARNELL FARRIS  
R. KEVIN MILBURN

1209 GARVIN PLACE

HENSLEY RESIDENCE  
ADDITION PROPOSAL



15CA1161

SIDING: FIBER-CEMENT  
BOARD-AND-BATTEN  
12" ON CENTER  
BATT. STRIPS

CRANK OPEN  
CASEMENT  
WINDOWS

ROOF MATERIAL:  
DIMENSIONAL FIBERGLASS  
SHINGLE

LIGHT DORMER

FIREPLACE  
CHIMNEY

OLD RUDYARD  
KIPLING BUILDING

REMOVE BACK  
RUN OF EXTERIOR  
STEPS

SHORTEN  
EXISTING  
WINDOW

GLASS ENTRY  
DOOR COVERINGS

NEIGHBORING HOUSE

RETAIN EXISTING  
SIDING

BRICK

WALK

EXISTING HOUSE STRUCTURE

21'-3"

28'-0"±

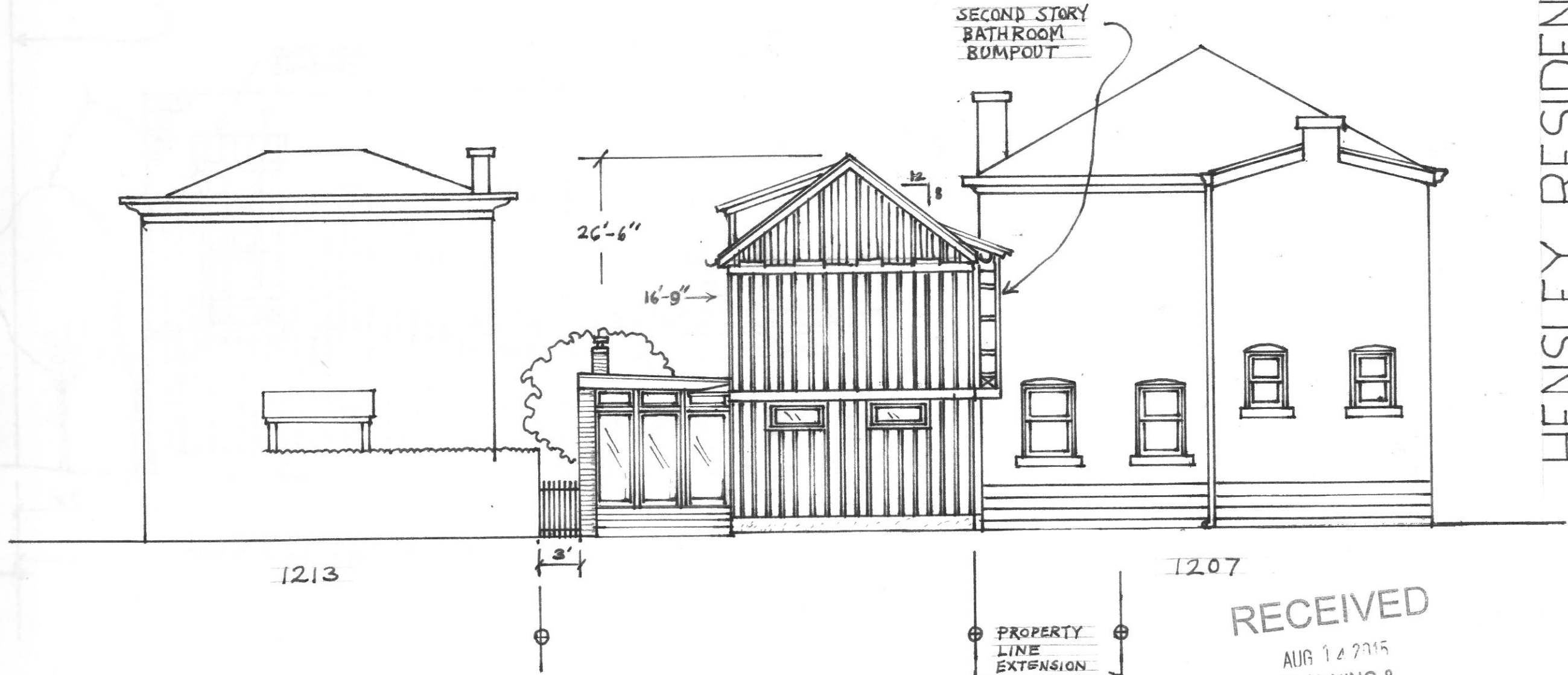
SOUTH ELEVATION

1/8" ~ 1'-0"

POSSIBLE  
BIOSWALE LOCATION

RECEIVED

AUG 14 2015  
PLANNING &  
DESIGN SERVICES



EAST ELEVATION  
SCALE 1/8" = 1'-0"

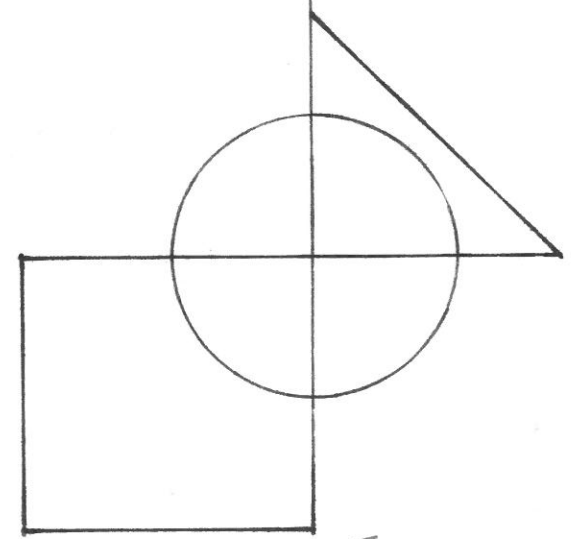
RECEIVED  
AUG 14 2015  
PLANNING &  
DESIGN SERVICES

11

HENSLEY RESIDENCE  
ADDITION PROPOSAL

1209 GARVIN PLACE

AUGUST / 2015  
by: DARNELL FARRIS  
R. KELVIN MILBURN



15COA1161

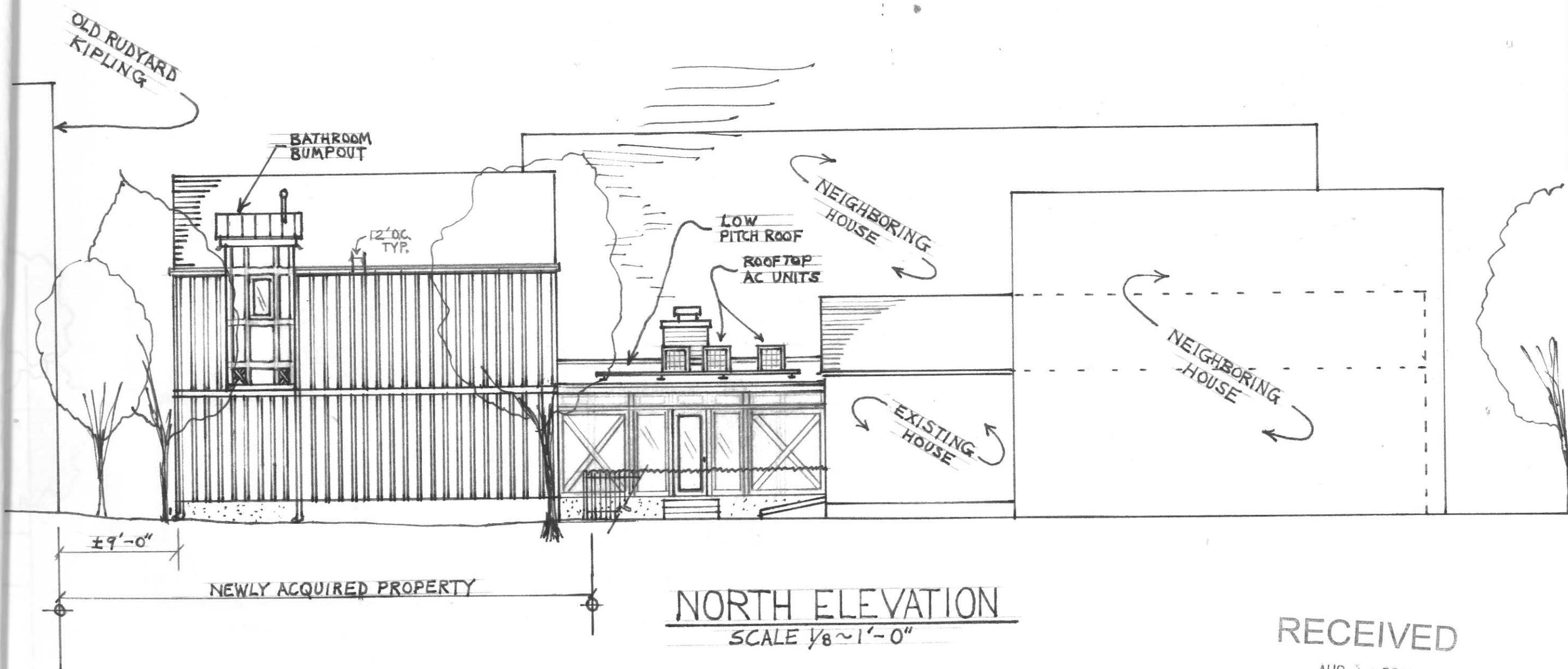
AUGUST/2015  
by: DARNELL FARRIS  
R. KEVIN MILBURN

1209 GARVIN PLACE

HENSLEY RESIDENCE  
ADDITION PROPOSAL

RECEIVED  
AUG 14 2015  
PLANNING &  
DESIGN SERVICES

SC001161



NORTH ELEVATION  
SCALE 1/8" = 1'-0"