

ADJACENT PROPERTY OWNERS

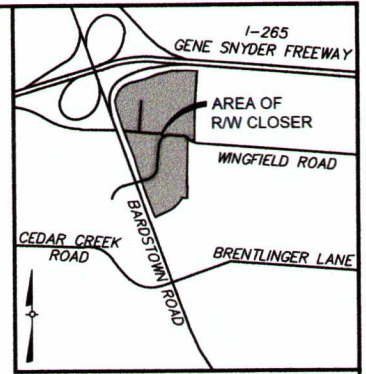
1 INVESTORS EXCHANGE COMPANY, LLC.  
3810 SPRINGHURST BLVD, SUITE 120  
LOUISVILLE, KY 40241  
D.B. 10912, PG. 229

3 INVESTORS EXCHANGE COMPANY, LLC.  
3810 SPRINGHURST BLVD, SUITE 120  
LOUISVILLE, KY 40241  
D.B. 10912, PG. 260

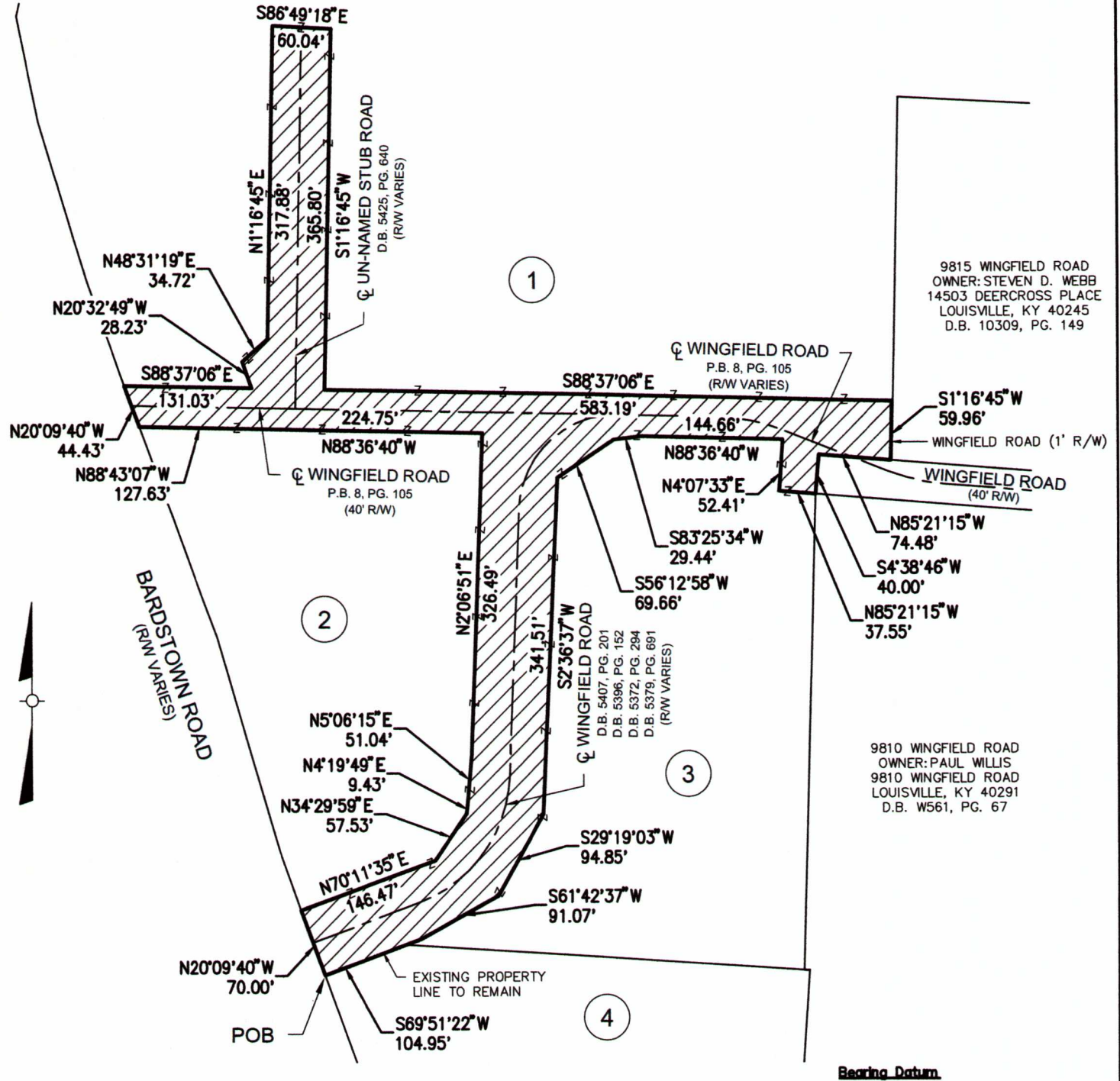
2 INVESTORS EXCHANGE COMPANY, LLC.  
3810 SPRINGHURST BLVD, SUITE 120  
LOUISVILLE, KY 40241  
D.B. 10912, PG. 250

4 KY RETIRED TEACHERS ASSOCIATION  
7505 BARDSTOWN ROAD  
LOUISVILLE, KY 40291  
D.B. 6108, PG. 152

NOTE: CLOSED RIGHT-OF-WAY LAND AREA TO BE CONSOLIDATED WITH LOTS IDENTIFIED AS 1, 2 & 3 ON THIS PLAT.



LOCATION MAP  
NOT TO SCALE



**LEGEND**  
AREA OF PROPOSED PERMANENT CLOSURE = 2.45 ACRES

**Bearing Datum**  
Vertical - Static GPS Observation: NAVD 88  
Horizontal - GPS Observation: NAD 83 KY North Zone, State Plane Coordinates  
**GRAPHIC SCALE**  
150 0 75 150  
( IN FEET )  
1 Inch = 150 feet

**Notes**

- In addition to a Trimble S-6 Robotic Instrument, Global Positioning System was used to locate the control for the site and some Monumentation. Points were located in real time using one Trimble S-10 Rover, which is a Dual Frequency Receiver, receiving network corrections from the Kentucky Transportation Cabinet Network. The Horizontal Datum used was the Kentucky State Plane Coordinate System, North Zone, North American Datum of 1983, Geoid 12B Relative Positional Accuracy varied from 0.01' to 0.04' Horizontally.
- No portion of the property is located in flood hazard area per FEMA 21111C0097E, Dated December 5, 2006.
- Ingress to and Egress from the subject property is currently provided from Bardstown Road, the same being paved, dedicated right-of-way maintained by KYTC.

**Land Surveyor's Certificate**

I hereby certify that the plat and survey shown here on were made under my supervision and that the angular and linear measurements as witnessed by monuments shown hereon are true and correct to the best of my knowledge and belief. This survey was made by the method of random traverse and the bearings and distances have not been adjusted for closure. The survey as shown hereon is a class "A" survey and the accuracy and precision of said survey is more than 1 in 14,535 and meets all specifications of this class as stated in KAR 201 18.150. Field work completed on 2017.

STATE OF KENTUCKY  
ERIC T. SANDERS  
3675  
LICENSED PROFESSIONAL  
LAND SURVEYOR

*Eric T. Sanders* 9/28/17  
Eric T. Sanders PLS #3675 Date

**CASE# 16STREETS1022**  
**STREET CLOSURE PLAT**  
THE PURPOSE OF THIS PLAT IS TO CLOSE A PORTION OF WINGFIELD ROAD AND AN UNNAMED STUB STREET

APPLICANTS:  
**INVESTORS EXCHANGE COMPANY, LLC.**  
3810 SPRINGHURST BLVD, SUITE 120  
LOUISVILLE, KY 40241

**KY RETIRED TEACHERS ASSOCIATION**  
7505 BARDSTOWN ROAD  
LOUISVILLE, KY 40291

*E.T.S. Surveying, Inc.*  
3316 Furman Blvd.  
Louisville, KY 40220  
PHONE: (502) 939-2210 FAX: (502) 485-1216  
Email: etssurveying@yahoo.com

PROJ.# 17054 DATE: 9/21/17 SCALE: 1"=150' SHEET 1

K:\Projects\2017\17054 - Statewide Comm'n\Street Closure\17054 - 3001 - Statewide Comm'n - Wingfield Road Street Closure Plat.dwg PLOT DATE: September 27, 2017 - 12:00am

Wingfield Street Closure

Beginning at a point on the eastern right-of-way of Bardstown Road and on the south right-of-way of Wingfield Road, also on the northwest corner of a tract of land conveyed to the Ky Retired Teachers Association in Deed book 6108, Page 152, found in the office of the Clerk of Jefferson County; thence with the right-of-way of Bardstown Road, N 20°09'40" W, 70.00' to a point; thence, leaving the aforesaid right-of-way, N 70°11'35" E, 146.47' to a point; thence N 34°29'59" E, 57.53' to a point; thence N 4°19'49" E, 9.43' to a point; thence N 5°06'15" E, 51.04' to a point; thence N 2°06'51" E, 326.49' to a point; thence N 88°36'40" W, 224.75' to a point; thence N 88°43'07" W, 127.63' to a point on the right-of-way of Bardstown Road; thence with the aforesaid right-of-way, N 20°09'40" W, 44.43' to a point; thence leaving the aforesaid right-of-way, S 88°37'06" E, 131.03' to a point; thence N 20°32'49" W, 28.23' to a point; thence N 48°31'19" E, 34.72' to a point; thence N 1°16'45" E, 317.88' to a point; thence S 86°49'18" E, 60.04' to a point; thence S 1°16'45" W, 365.80' to a point; thence S 88°37'06" E, 583.19' to a point; thence S 1°16'45" W, 59.96' to a point; thence N 85°21'15" W, 74.48' to a point; thence S 4°38'46" W, 40.00' to a point; thence N 85°21'15" W, 37.55' to a point; thence N 4°07'33" E, 52.41' to a point; thence N 88°36'40" W, 144.66' to a point; thence S 83°25'34" W, 29.44' to a point; thence S 56°12'58" W, 69.66' to a point; thence S 2°36'37" W, 341.51' to a point; thence S 29°19'03" W, 94.85' to a point; thence S 61°42'37" W, 91.07' to a point; thence S 69°51'22" W, 104.95' to the point of beginning containing 2.45 acres more or less.



*Eric J. Sanders*

*9/28/17*