

**LEGEND**

- OPTION 1  
CUT: 8,500 Cu. Yd.
- OPTION 2  
CUT: 15,000 Cu. Yd.
- EXISTING FENCE
- EXISTING OVERHEAD ELECTRIC
- EXISTING TREELINE
- EXISTING SANITARY SEWER
- EXISTING STORM SEWER
- EXISTING CONTOUR 5'
- EXISTING CONTOUR 1'
- DIRECTION OF EXISTING DRAINAGE

**SITE DATA**

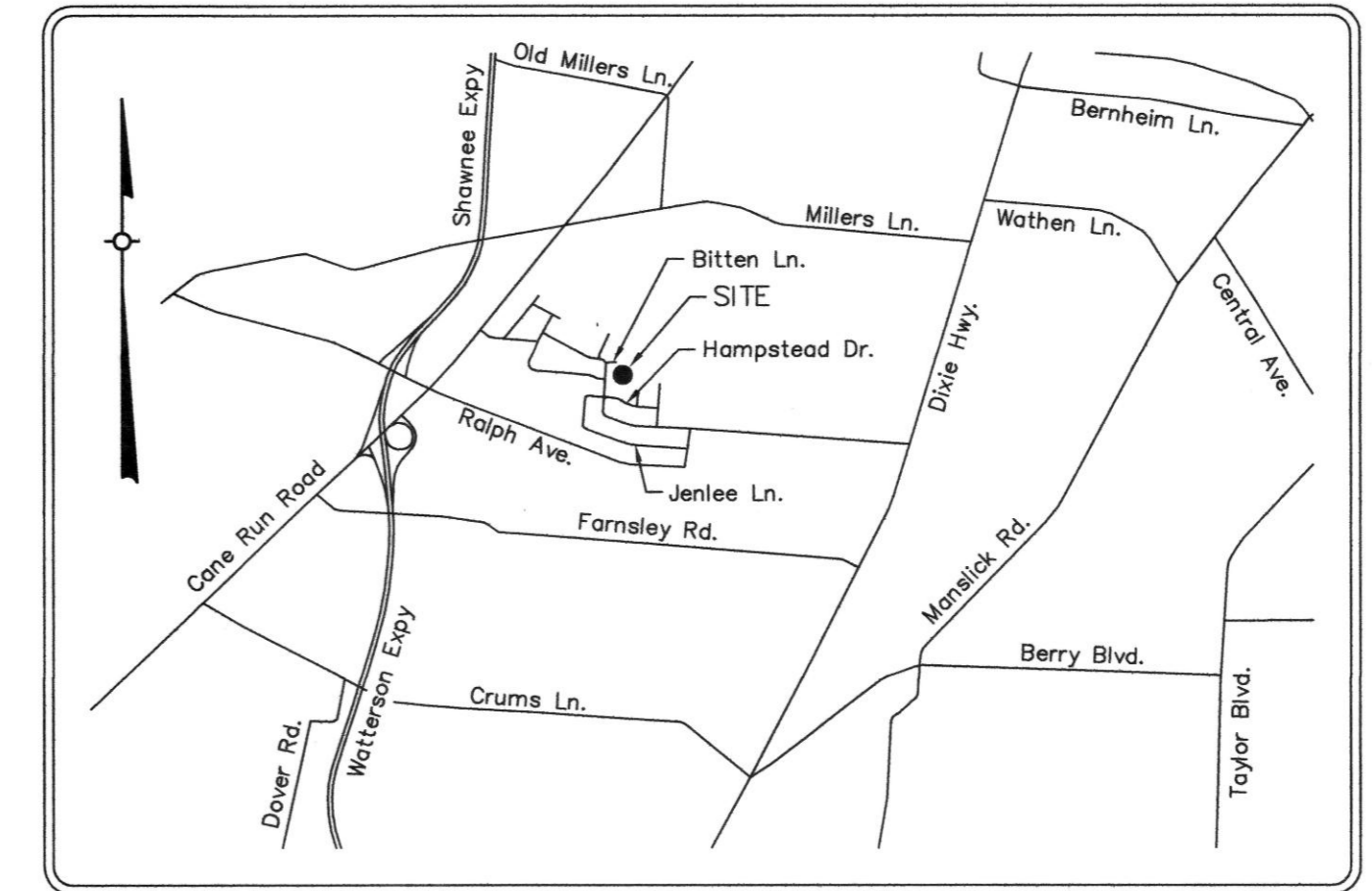
LOT 88 = 42,561 s.f. (0.98 Acres)  
ZONED R-5, FORM DISTRICT N  
EXISTING USE - STORM WATER DETENTION AREA  
PROPOSED USE - STORM WATER DETENTION AREA

LOT 35 = 189,764 s.f. (4.36 Acres)  
ZONED R-5, FORM DISTRICT N  
EXISTING USE - STORM WATER DETENTION AREA  
PROPOSED USE - STORM WATER DETENTION AREA

EASEMENT NOTE:  
A TITLE COMMITMENT MAY OR MAY NOT REVEAL EASEMENTS AFFECTING THIS PROPERTY

**EROSION PREVENTION AND SEDIMENT CONTROL NOTES**

1. THE APPROVED EROSION PREVENTION AND SEDIMENT CONTROL (EPSC) PLAN SHALL BE IMPLEMENTED PRIOR TO ANY LAND-DISTURBING ACTIVITY ON THE CONSTRUCTION SITE. ANY MODIFICATIONS TO THE APPROVED EPSC PLAN MUST BE REVIEWED AND APPROVED BY MSD'S PRIVATE DEVELOPMENT REVIEW OFFICE. EPSC BMP'S SHALL BE INSTALLED PER THE PLAN AND MSD STANDARDS.
2. DETENTION BASINS, IF APPLICABLE, SHALL BE CONSTRUCTED FIRST AND SHALL PERFORM AS SEDIMENT BASINS DURING CONSTRUCTION UNTIL THE CONTRIBUTING DRAINAGE AREAS ARE SEEDDED AND STABILIZED.
3. ACTIONS MUST BE TAKEN TO MINIMIZE THE TRACKING OF MUD AND SOIL FROM CONSTRUCTION AREAS ONTO PUBLIC ROADWAYS. SOIL TRACKED ONTO THE ROADWAY SHALL BE REMOVED DAILY.
4. SOIL STOCKPILES SHALL BE LOCATED AWAY FROM STREAMS, PONDS, SWALES AND CATCH BASINS. STOCKPILES SHALL BE SEEDDED, MULCHED, AND ADEQUATELY CONTAINED THROUGH THE USE OF SILT FENCE.
5. ALL STREAM CROSSINGS MUST UTILIZE LOW-WATER CROSSING STRUCTURES PER MSD STANDARD DRAWING ER-02.
6. SEDIMENT-LADEN GROUNDWATER ENCOUNTERED DURING TRENCHING, BORING, OR OTHER EXCAVATION ACTIVITIES SHALL BE PUMPED TO A SEDIMENT TRAPPING DEVICE PRIOR TO BEING DISCHARGED INTO A STREAM, POND, SWALE, OR CATCH BASIN.
7. WHERE CONSTRUCTION OR LAND DISTURBING ACTIVITY WILL OR HAS TEMPORARILY CEASED ON ANY PORTION OF A SITE, TEMPORARY SITE STABILIZATION MEASURES SHALL BE REQUIRED AS SOON AS PRACTICABLE, BUT NO LATER THAN 14 CALENDAR DAYS AFTER THE ACTIVITY HAS CEASED.



VICINITY MAP

PRELIMINARY APPROVAL  
DEVELOPMENT PLAN  
CONDITIONS:

BY: *Dmy Nodet*  
DATE: 1-21-15  
LOUISVILLE/JEFFERSON COUNTY  
METRO PUBLIC WORKS

Kristen D. Lowery  
D.B. 10260, Pg. 598  
Tax Block 1408, Lot 18  
Zoning R-5, Form District N

Margie S. Smith  
D.B. 8335, Pg. 768  
Tax Block 1408, Lot 17  
Zoning R-5, Form District N

Benny Robinson  
D.B. 9161, Pg. 179  
Tax Block 1408, Lot 12  
Zoning R-5, Form District N

Creny Properties, LLC  
D.B. 9742, Pg. 736  
Tax Block 1408, Lot 11  
Zoning R-5, Form District N

William F. & Maria Walker  
D.B. 4040, Pg. 974  
Tax Block 1408, Lot 14  
Zoning R-5, Form District N

Bernie K. Reed  
D.B. 7450, Pg. 176  
Tax Block 1408, Lot 15  
Zoning R-5, Form District N

D.E. Erig, Jr.  
D.B. 7450, Pg. 176  
Tax Block 1408, Lot 15  
Zoning R-5, Form District N

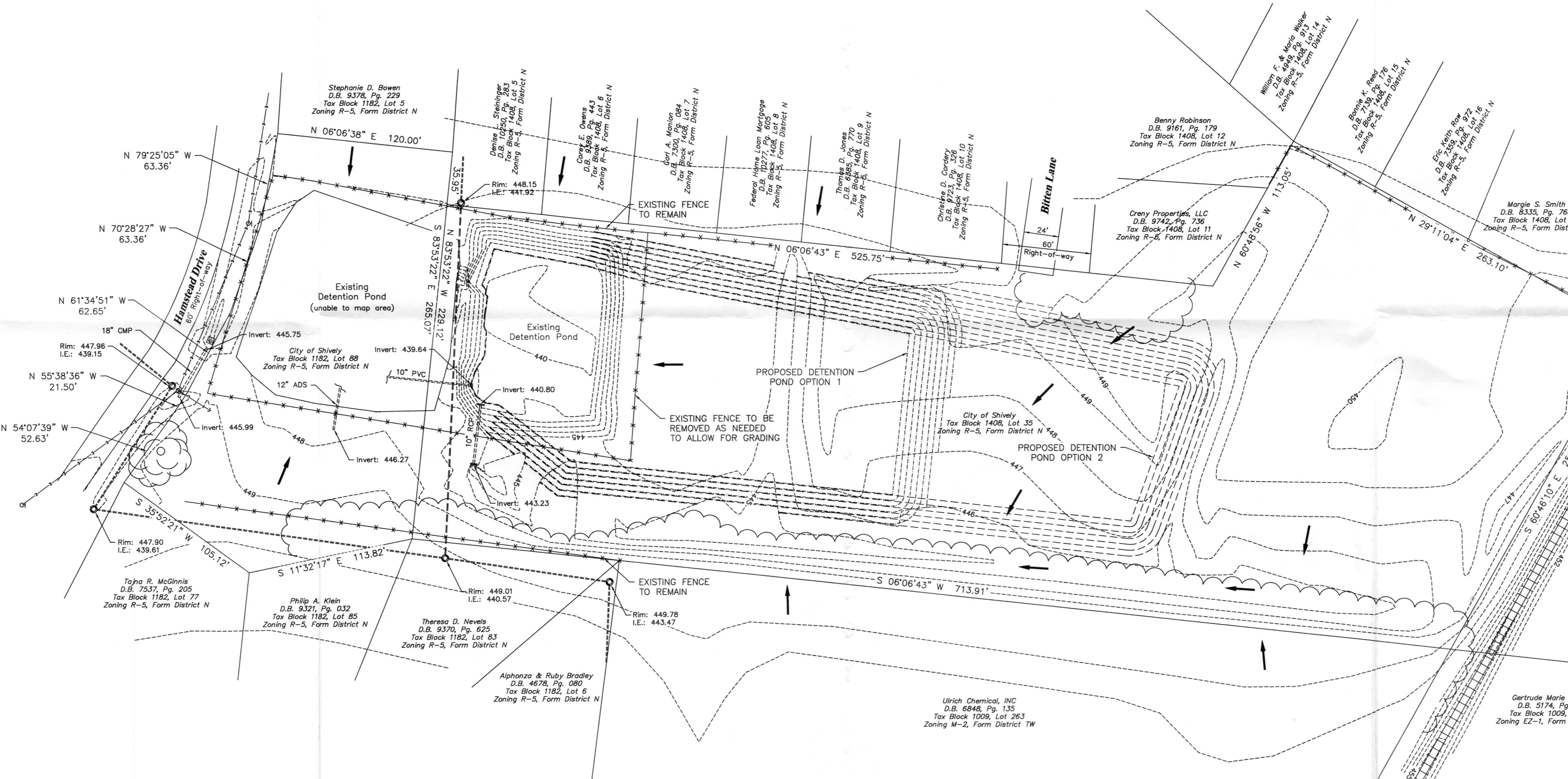
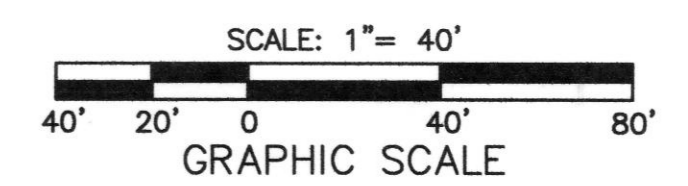
Ulrich Chemical, Inc  
D.B. 6848, Pg. 135  
Tax Block 1009, Lot 263  
Zoning M-2, Form District TW

Gertrude Marie Reichle  
D.B. 5174, Pg. 680  
Tax Block 1009, Lot 32  
Zoning EZ-1, Form District TW

Heather Enterprises, LLC  
D.B. 6568, Pg. 270  
Tax Block 1004, Lot 147  
Zoning EZ-1, Form District TW

PRELIMINARY APPROVAL  
Condition of Approval:  
*Dmy Nodet*  
Development Review Date  
LOUISVILLE & JEFFERSON COUNTY  
METROPOLITAN SEWER DISTRICT

RECEIVED  
JAN 15 2015  
PLANNING &  
DESIGN SERVICES



**BA ENGINEERS, INC.**  
A DIVISION OF BRYANT ASSOCIATES, INC.  
455 SOUTH 4TH STREET, SUITE 1296  
LOUISVILLE, KENTUCKY, 40202  
(502) 775-5741 TEL. (502) 775-5742 FAX

		REVISIONS		
Drawn:	J.V.	NO.	DATE	REMARKS
		1		
Checked:	R.S.	3		
		4		
		5		
		6		

**HAMPSTEAD DRIVE**  
DETENTION POND EXPANSION OPTIONS  
3015 BITTEN LANE, LOUISVILLE, KENTUCKY 40216

Client: CITY OF SHIVELY 3920 DIXIE HIGHWAY SHIVELY, KENTUCKY 40216		Sheet Number <b>1 of 1</b>
Vertical Scale NA	Date SEPTEMBER 26, 2014	Job Number 212074
Horizontal Scale 1"=40'		