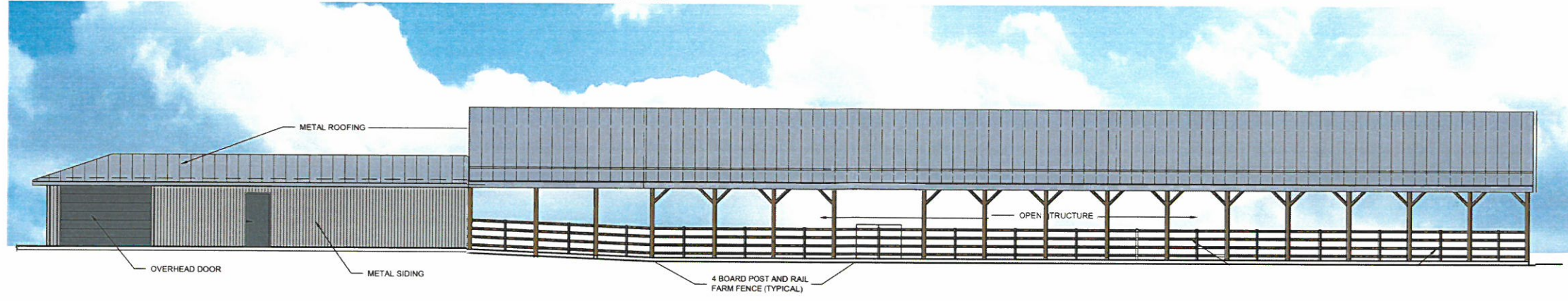
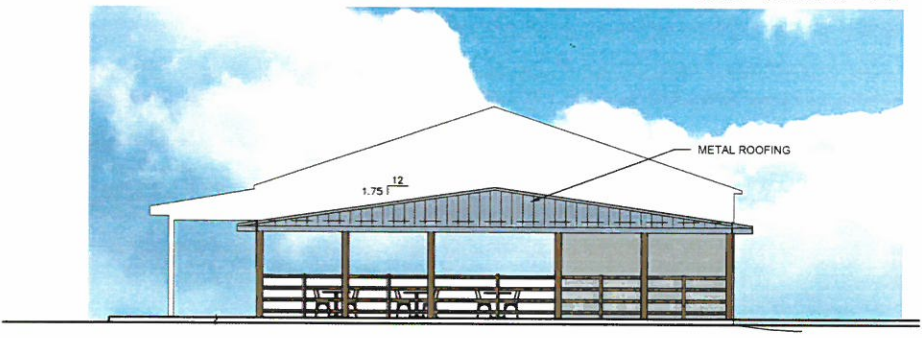


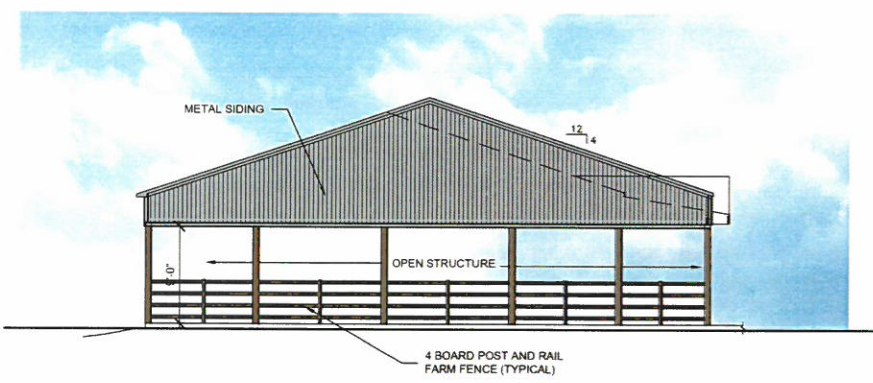
01 EAST ELEVATION
SCALE: 1/8" = 1'-0"



02 WEST ELEVATION
SCALE: 1/8" = 1'-0"



03 NORTH ELEVATION
SCALE: 1/8" = 1'-0"



04 SOUTH ELEVATION
SCALE: 1/8" = 1'-0"

KEYES ARCHITECTS & ASSOCIATES
4717 PRESTON HIGHWAY
LOUISVILLE, KENTUCKY 40213 (502) 636-8113

NEW CONSTRUCTION FOR:
LOUISVILLE K-9 CLUB
9316 TAYLORSVILLE RD
LOUISVILLE, KY 40299

RECEIVED
MAY 21 2020
PLANNING & DESIGN
SERVICES

Keyes Architects and Associates expressly reserve its common law copyright and other property rights in these documents. These documents are considered proprietary information and shall not be upgraded, changed or copied in any form or matter whatsoever nor are they to be assigned to any third party without first obtaining the express written permission and consent of Keyes Architects and Associates, 3005 Taylor Boulevard, Louisville, Kentucky 40208

EXTERIOR ELEVATIONS
A2.01

PROJECT: LOUISVILLE K-9 CLUB - FILE: A2.01 Exterior Elevations.dwg - DATE: May 13, 2020 10:44 AM - BY: HARGOLD.CDX

20-000-0