

LEGEND



ALLEY TO BE CLOSED
193 SQUARE FEET



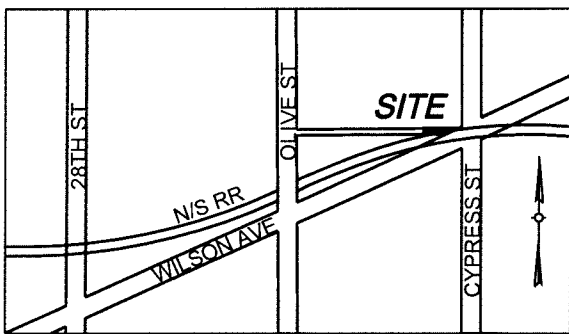
COMPUTED UNMARKED CORNER



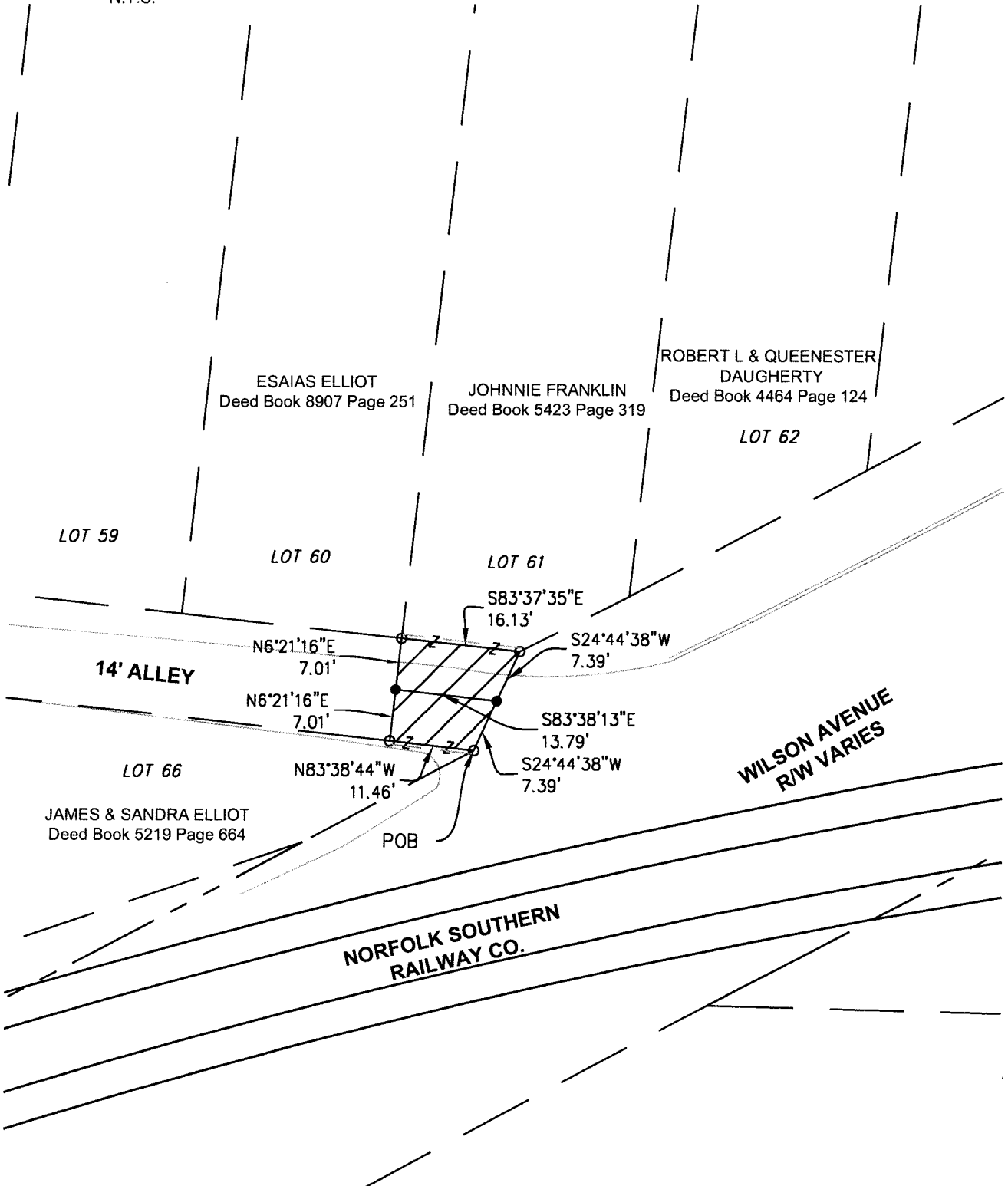
SET MAG NAIL WITH WASHER
STAMPED "HOLLAND 4043"

NOTES:
ALL LOTS ABUTTING THIS ALLEY
CLOSURE SHALL BE CONSOLIDATED
WITH THE RESPECTIVE PORTIONS OF
THE ALLEY CLOSURE.

LOT NUMBERS SHOWN HEREON
REFER TO TAX BLOCK 48K.

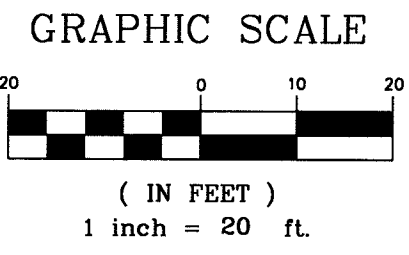


Vicinity Map
N.T.S.



North and all bearings shown hereon are based on
grid north of the KY state plane coordinate system,
single zone (NAD 83) as established by GPS

STATE OF KENTUCKY
**DERRICK
SCOTT
HOLLAND**
4043
LICENSED
PROFESSIONAL
LAND SURVEYOR
LAND SURVEYOR'S CERTIFICATE



ALLEY CLOSURE PLAT
Site Information

A portion of a 14' alley located east of Olive St. between Woodland Ave.
& Wilson Ave.
Louisville, Jefferson County, Kentucky

APPLICANT
Louisville & Jefferson County Metro Government
444 South 5th Street
Louisville, Kentucky 40202
Zoning: R-6 & M-2 / Form District: Traditional Neighborhood
PROPOSED USE: Additional Rear Yard

BTM ENGINEERING, INC.
Consulting Engineers Landscape Architects Planners
3001 Taylor Springs Drive
Louisville, Kentucky 40220
(502) 459-8402



I hereby certify that this Road Closure Plat and survey were made under my supervision, and that the angular and linear measurements as witnessed by monuments shown hereon are true and correct to the best of my knowledge and belief. This survey does not represent a boundary survey and is not intended for land transfer.

Derrick Scott Holland
Derrick Scott Holland PLS #4043
February 25, 2016
Date:

1157R&TS1017