

# SOS

The logo consists of the letters 'SOS' in a bold, blue, sans-serif font. The letter 'O' is replaced by a green and white globe showing the continents of North and South America. A thick blue horizontal bar is positioned below the logo.

Delivering a World of Health & Hope

Changing the World  
One Life at a Time

#SOSLovesLouisville  
#SOSLovesTheWorld

Louisville-based SOS is a global health non-profit focused on enhancing health, mitigating health inequities and protecting our environment.


## ACCOMPLISHMENTS 2010-2022

Diverted 5 million pounds of usable surplus medical supplies from being thrown away in our landfills.

Donated over 100 million medical supplies to save and change lives around the world including in our home community of Louisville.

Became the 6<sup>th</sup> organization in the United States to be awarded national accreditation for best practices by MedSurplus Alliance.

Expanded hospital/healthcare partnership network by 30% with surplus medical supplies serving the SOS local and international mission now coming from throughout the state of Kentucky plus Indiana, Ohio, Tennessee and Alabama.



## WHAT WE DO

*Protect our environment and save lives*

- ▶ SOS collects, processes and responsibly redeploys surplus medical items to medical, education and social services organizations locally and internationally.



## HOW

- ▶ Collect almost 10,000 pounds of medical surplus items per week.
- ▶ Sort and process the supplies. Test equipment.
- ▶ Inventory and pack items for distribution
- ▶ Work with recipient organizations (multi-level assessment)
- ▶ Deliver or ship supplies.



SOS engages over 3,500  
volunteers from Louisville per year



# SOS

## *Global Health Organization*

### Local Health Program

Education

Social Services

Medical care

Over 200 partners

Growth of 27% in 2021

### International Health Program

Maternal & Child Health

Medical Education

Rural Health

105 countries served

Growth of 20% in 2021

# International Health Program

Shipments of medical supplies and equipment are sent each year to serve over 50 clinics and hospitals treating 500,000 individuals in our world's most impoverished regions.

**Balaka District Health Officer Dr. Vicent Namaunde makes a symbolic presentation on behalf of SOS to Sister In-Charge Rita Mbalule**



# Local Health Program



EDUCATION



EMERGENCY RELIEF



MEDICAL



ANIMAL WELFARE



SOCIAL SERVICES



# PARTIAL LIST OF JEFFERSON COUNTY ORGANIZATIONS RECEIVING DONATED SUPPLIES FROM SOS

## EDUCATION

Assumption High School  
Bellarmine University  
Campbellsville University  
Christian Academy  
Christopher 2X Gamechangers  
Civil Air Patrol  
Galen College  
Healthcare Essentials Training Institute  
JCPS high schools (15)  
Local elem/middle (4)  
JCTC  
KY Science Center  
Mercy Academy  
Spaulding University  
Sullivan University  
University of Louisville  
YouthBuild

## ANIMAL WELFARE

Humane Society  
Louisville Metro Animal Services  
Louisville Zoo

## MEDICAL

Amedysis Home Health  
Family Health Centers  
HPMS Internal Medicine  
Hope Wellness Clinic  
Hosparus  
Kentucky Refugee Ministries  
Kentucky Board of EMS Ministries  
Kids Center for Pediatric Therapies  
Klondike Center  
Middletown Methodist Medical Van  
Norton Children's Hospital Lab  
Norton Faith & Health Ministries  
Project CARAT  
Seven Counties  
Shawnee Christian Health Center  
Stimer Healthcare  
THR Pediatrics & Wellness  
U of L Frazier Rehab  
Zora's Cradle

## SOCIAL SERVICES

Burnett Ave Baptist Church  
Camp Hendon  
Catholic Charities – Refugee Services  
Coalition for the Homeless  
Dare to Care  
Family & Children's Place  
Family Scholar House  
Father Jack Jones Food Pantry  
Goodwill  
Habitat for Humanity  
Hip Hop Cares  
La Casita Center  
LMPD  
Neighborhood House  
St. Vincents Open Hand Kitchen  
The Healing Place  
Walnut Street Baptist Church  
Wayside Christian Mission  
Women of the Well



**SOS**  
Delivering a World of Health & Hope

#WEARE  
JCPS  
NeAr

[SOS] works very hard to support the Academies of Louisville. I have to give the credit to SOS who stepped up and gave us the opportunity to work together by donating [supplies].

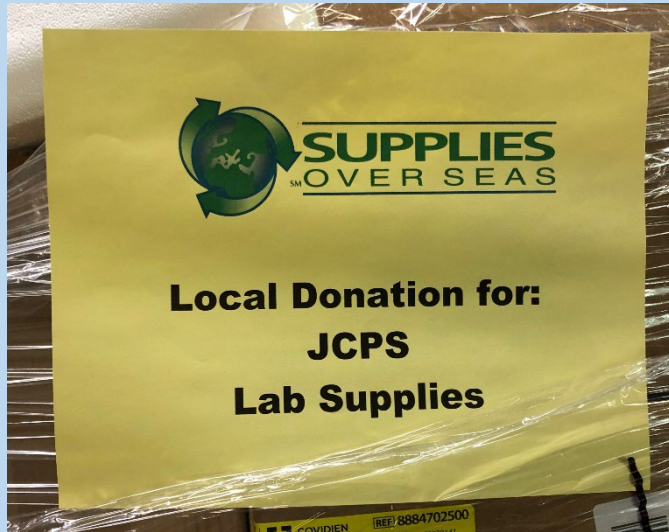
- Dr. Marty Pollio  
Superintendent, JCPS



# Education

---

# JEFFERSON COUNTY PUBLIC SCHOOLS



**SOS donations  
saved JCPS  
\$226,048 in 2021  
and served over  
5,000 students.**

## SOS supplies the following JCPS Health Science Programs

### Atherton

- Allied Health
- Patient Care Technician
- PLTW Biomedical Sciences

### Butler

- Allied Health
- Pre-Nursing

### Central

- Allied Health
- Pharmacy Technician
- Pre-Nursing

### Doss

- Allied Health
- Patient Care Technician
- Medicaid Nurse Aide

### Fairdale

- Patient Care Technician

### Jeffersontown

- Allied Health
- Medicaid Nurse Aide

### Moore

- Allied Health
- EKG Technician
- Pharmacy Technician
- PLTW Biomedical
- Medicaid Nurse Aide

### PRP

- Allied Health
- Patient Care Technician

- Pharmacy Tech
- PLTW Biomedical
- Pre-nursing

### Seneca

- Allied Health
- Patient Care Technician

### Shawnee

- Allied Health
- Medicaid Nurse Aide

### Valley

- Allied Health
- Clinical Medical Assisting
- EKG Technician
- Medicaid Nurse Aide
- Phlebotomy
- PLTW Biomedical
- Veterinary Assistant

### Waggoner

- Allied Health
- EKG Technician
- PLTW Biomedical
- Medicaid Nurse Aide

### Western

- Allied Health
- Patient Care Technician



# SOS SUPPORTED EDUCATION/WORKFORCE DEVELOPMENT PROGRAMS

## **Bellarmino University**

- Athletic Training
- Nursing
- Physical Therapy
- Respiratory Therapy

## **Campbellsville University**

- Allied Health

## **Galen School of Nursing**

## **Health Careers Training Institute**

- Certified Nursing Assistant

## **Healthcare Essentials Training Institute**

- Certified Nursing Assistant
- Phlebotomy

## **Jefferson Community & Technical College**

- LPN
- Paramedic

## **Spaulding University**

- Nursing
- Occupational Therapy
- Visual Arts

## **Sullivan University**

- Nursing
- ORT
- Physician Assistant

## **University of Louisville**

- School of Nursing
- School of Medicine
- Paris Simulation Center

## **YouthBuild**

- Certified Nursing Assistant



# MEDICAL CARE PROVIDERS



# SOCIAL SERVICES



WDRB.COM

LMPD, SOS partner to collect items for Louisville's homeless



SOS is in Louisville, Kentucky.

Published by Instagram · September 9, 2021 · Instagram

Today's donations went to Dare to Care! 8 pallets of incontinence supplies were delivered to their warehouse and will be distributed to food pantries throughout Kentucky and southern Indiana. This partnership will ensure that our elderly don't need to choose between spending money on food or on their personal health. #SOS #Donations #charity #localhealth



SOS

Published by Ali Shaw Hawthorne · 6d

Yesterday, we loaded our truck with 6 pallets of medical supplies worth \$45,000 and delivered them to 5 different organizations that serve Louisville's homeless, low income residents, refugees and immigrants. The supplies, including gloves, masks, disinfectant wipes, band-aids, and personal care items, were donated to St. Vincent's Open Hand Kitchen, Kentucky Refugee Ministries, Catholic Charities of Louisville, St. Franciscan Soup Kitchen Louisville Kentucky, and Wayside Community Mission.



Neighborhood House

# SOS EMERGENCY DISASTER RELIEF



Eastern Kentucky Flooding



Hurricane Ida – New Orleans



Western Kentucky Tornado



Louisville Metro Police  
Department



Yesterday at 11:54 AM · 🌐

THANK YOU to [Supplies Over Seas](#) for donating surgical masks, gloves, foam hand sanitizer and other items directly to the front line cops on LMPD. It's businesses like these that make a huge difference in the fight against Covid.

We appreciate you!

Be sure to peep their FB page and see all the other places they're donating to! [#LMPD](#)



Louisville COVID -19

# Covid 19 Response

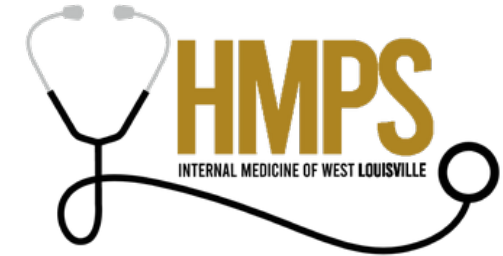


**When our community was in a COVID health crisis spring 2020, SOS mobilized donations of over \$1,000,000 in PPE and medical equipment to local hospitals, emergency services, testing and vaccine sites, nursing homes and schools to protect lives in our community.**



# SOS West Louisville Partnerships

**HOPE**  
WELLNESS CENTER



**Medical clinic that was one of the first doing COVID testing in WL**

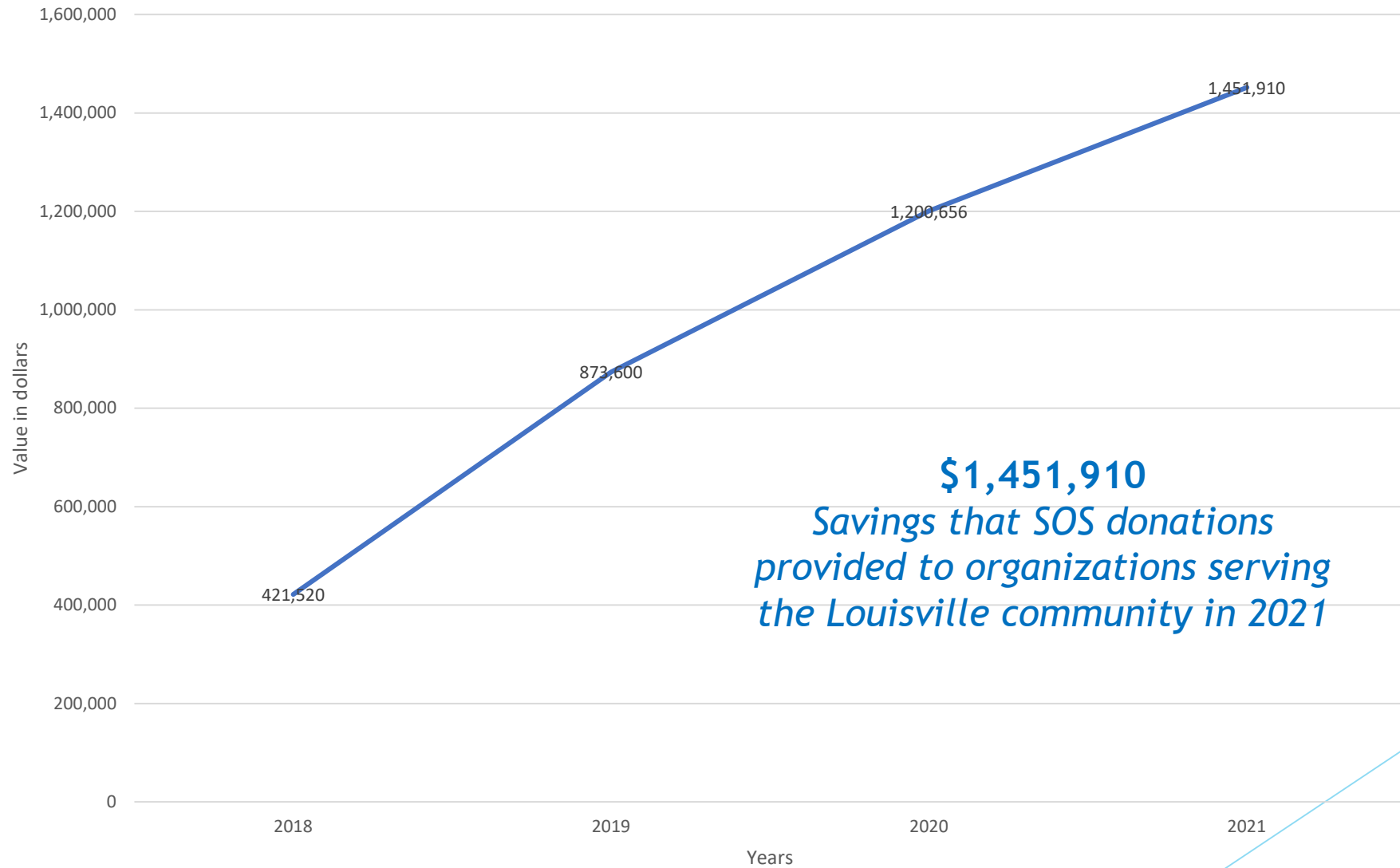


**First Certified Nursing Assistant training program in West Louisville**



**New clinic serving the Russell neighborhood.**

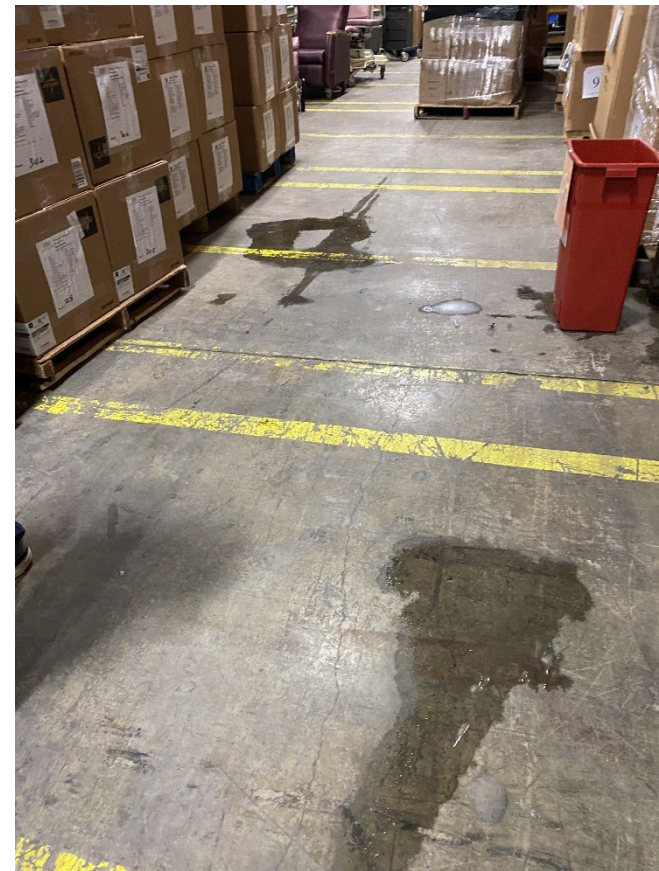
# Value of supplies donated by SOS to Louisville programs



## CHALLENGE: Infrastructure

Our team LOVES being in and serving Louisville! Operations are located in a 41,750 sq ft warehouse building at 1500 Arlington Avenue, Louisville, 40206. It is an ideal location for serving our hospital partners and the community but there are two major issues:

- Original roofing is beyond repair resulting in dozens of leaks during rain and snow that threaten supply inventory. (\$770,000-\$950,000)
- Growth of the Local Health Program requires renovation of two areas to create an area for partners to view product availability and a dedicated holding area to increase efficiency of shipping/pick-ups. (\$300,000-\$400,000)



# SOS GOALS FOR 2022

- Continue to set a regional and international example for responsible and efficient emergency responses (*Ukraine is the focus currently*)
- Increase the International Program humanitarian aid to the developing world by 20%
- Increase the Local Health Program donations to our city, state and region by 25%
- Deepen our partnerships with key healthcare workforce development partners and identify new ways to support and measure student learning and engagement.
- Hire an Educational Coordinator to lead more in-depth work with our educational partners.
- Expand our local program impact by incorporating new resources. (Examples: continue business development consulting for new grassroots organizations; increase number of teaching opportunities for new team member, Freweine Mebrahtu, CNN Hero of the Year 2019, with area students; identify funding partners for scholarships at our CNA program partner in West Louisville to reduce barrier to enrollment).
- Secure funding for infrastructure improvements to ensure SOS stays and thrives in Louisville.



Denise Sears, President & CEO

[Denise.sears@soshealthandhope.org](mailto:Denise.sears@soshealthandhope.org)

502-523-5965

---

# Changing the World One Life at a Time

#SOSLovesLouisville  
#SOSLovesTheWorld