

LOUISVILLE METRO DEPARTMENT OF CORRECTIONS

PUBLIC SAFETY PRESENTATION FEBRUARY 15, 2017

Mark E. Bolton, Director
Louisville Metro Department of Corrections



Operations

Annual Budget: \$55.49 Million (FY 16-17)

Cost to House per Day:

Main \$69

(Medical/Mental Health Unit \$216.48)

CCC \$73

HIP \$18



Louisville Metro Department of Corrections Population 2016

Rated Detention Capacity:

Jail Complex: 983

Hall of Justice: 370

CCC: 440

Total 1,793

LMPD 3rd Floor: (126*) Opened April 2016

- 126 LMPD 3rd Floor beds – Operation and Staffing not budgeted; Not included in 1,793 capacity.



Louisville Metro Department of Corrections
Population SnapShot February 13, 2017:

Total In-Bed Count: 2,270

Jail Complex: 1,248

Hall of Justice: 425

CCC: 485

LMPD 3rd Floor: 112

471 more inmates on this date than there
were on the same date 2016; 630 inmates on HIP



Louisville Metro Department of Corrections

Operation of LMPD 3rd Floor:

Operation and staffing of the housing unit located on the 3rd Floor of LMPD Headquarters is unbudgeted.

Overtime cost to operate (approximate):

April 2016 through January 2017

- Operational for 211 days
- Generating 2,869 shifts/22,952 hours of OT
- \$2,909,195 total OT expenditure for this period, of which approximately \$613,000 was unbudgeted OT attributed to staffing this housing unit.





Main Jail Complex
Built in 1968

Opened as Corrections
in 1999



Main Jail Complex
Pedway connecting
to the
Hall of Justice

Main Jail
Complex
Roof Replacement
Began in 2016,
currently ongoing.



Hall of Justice
Built & Opened
1976



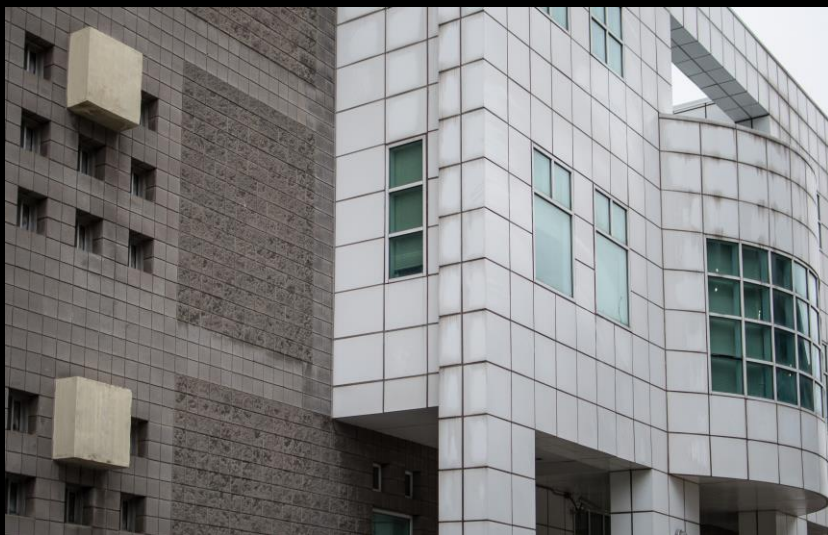


Hall of Justice Interior Walks / Cells





Community
Corrections Center
(CCC)
Built in 1939



Has undergone
numerous remodels,
became CCC in 1980



CCC
Interior Dorm &
Exterior Door
Mechanism





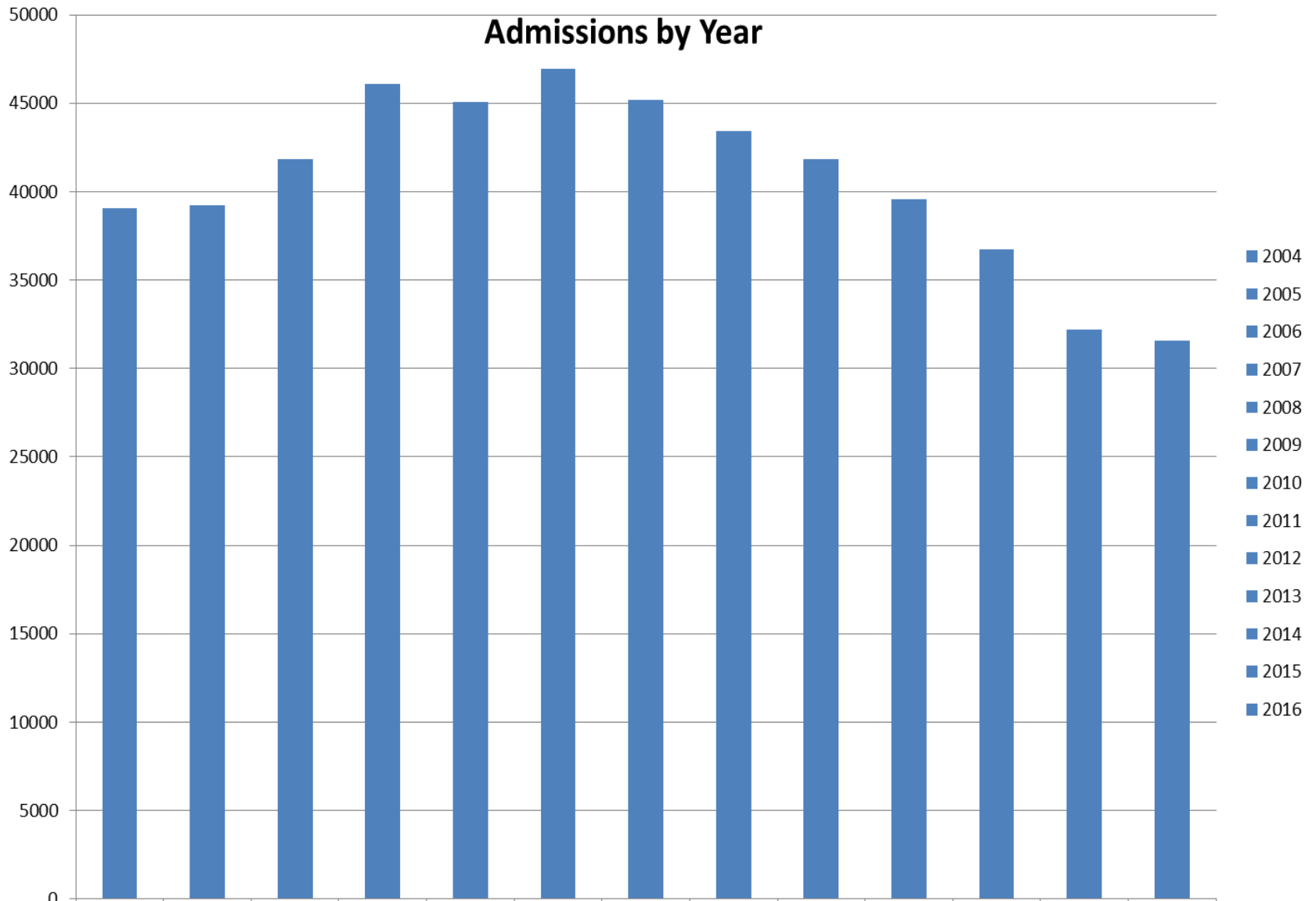
LMPD Headquarters Built in 1959

H3 unit on
3rd floor shuttered
facility used as
overflow from
Main Jail Complex

Interior
of H3
above
LMPD



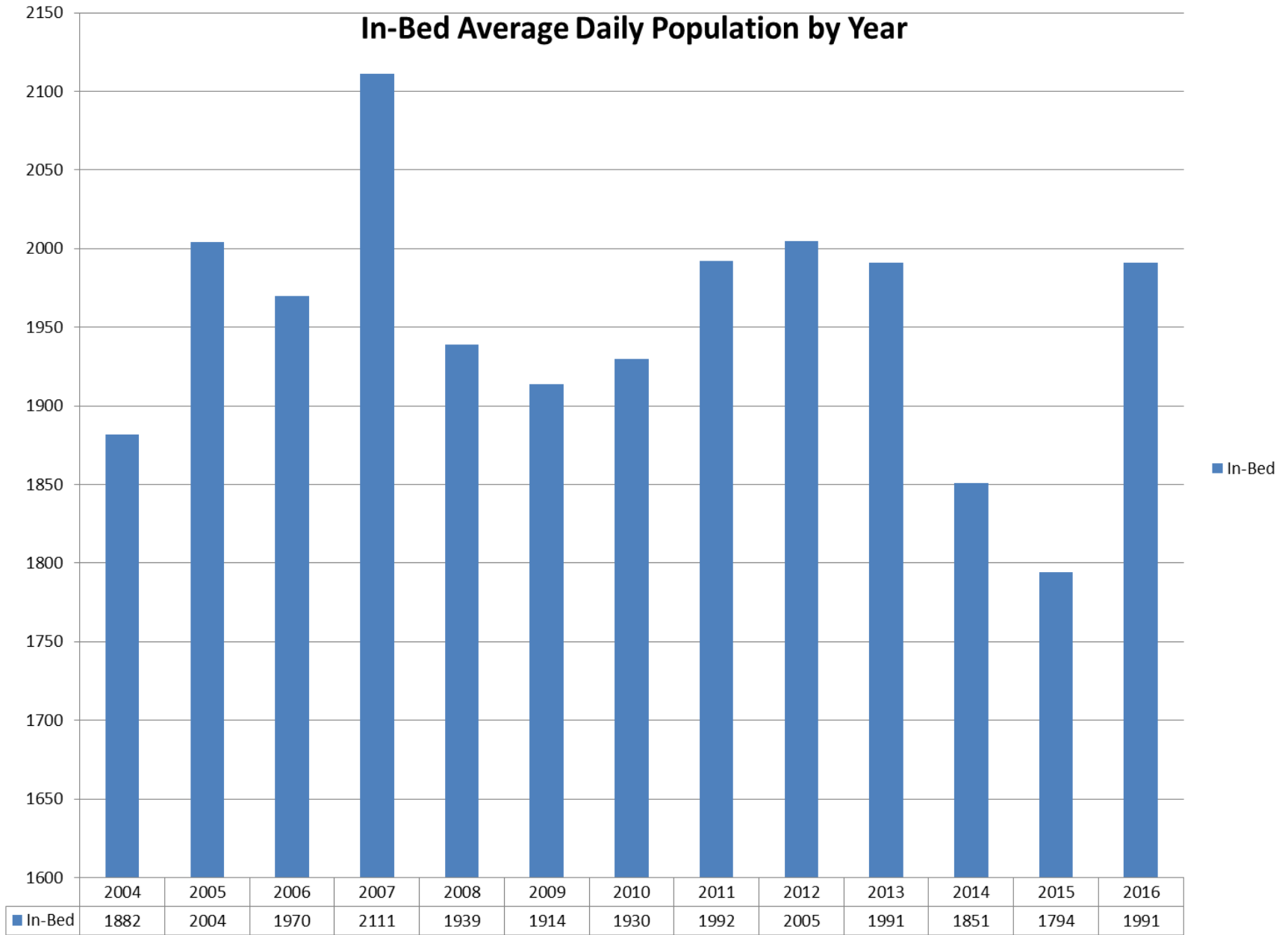
Admissions by Year



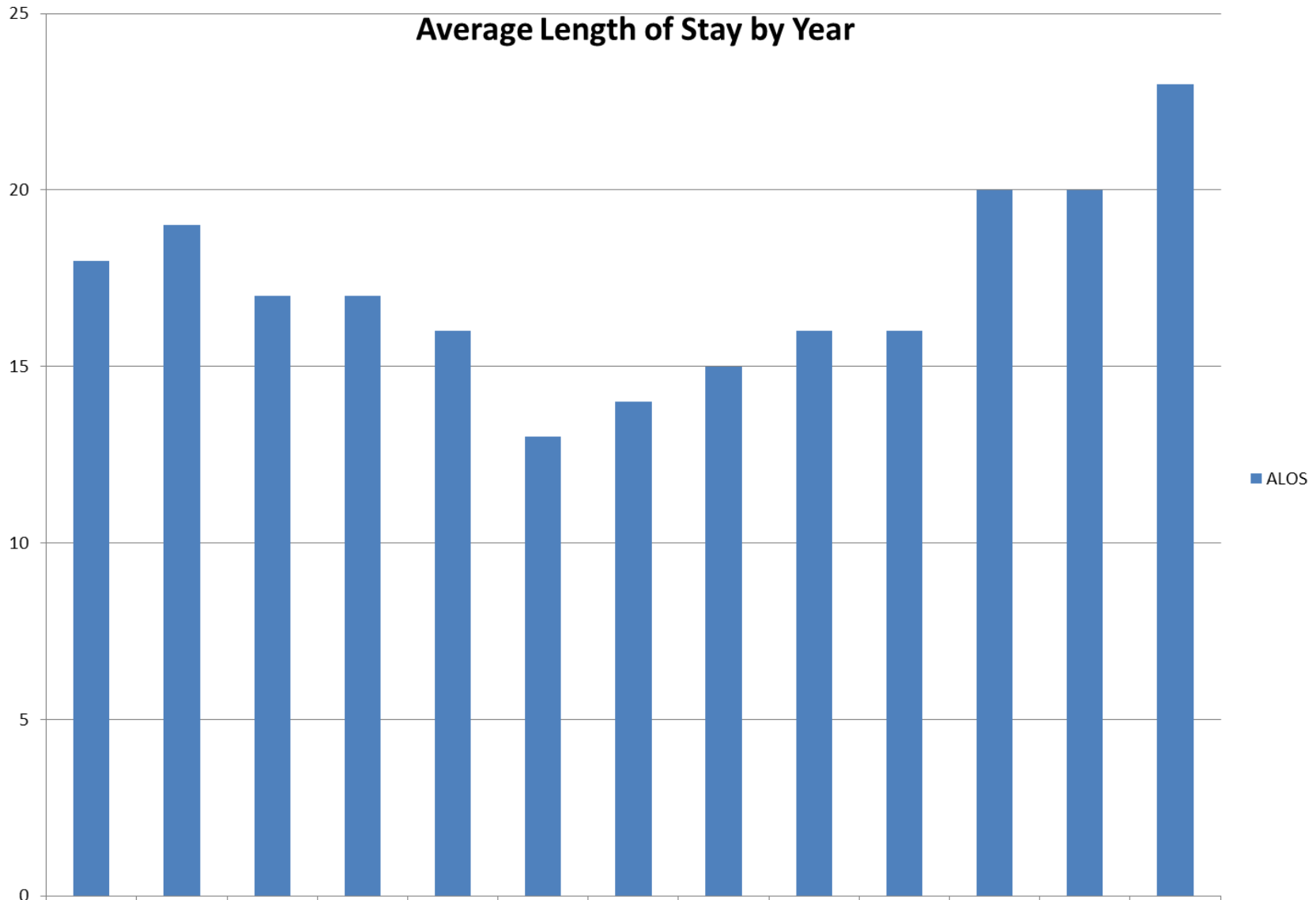
■ Admissions

	2004	2005	2006	2007	2008	2009	2010	2011	2012	2013	2014	2015	2016
Admissions	39046	39242	41860	46105	45072	46926	45161	43411	41844	39587	36740	32201	31549

In-Bed Average Daily Population by Year

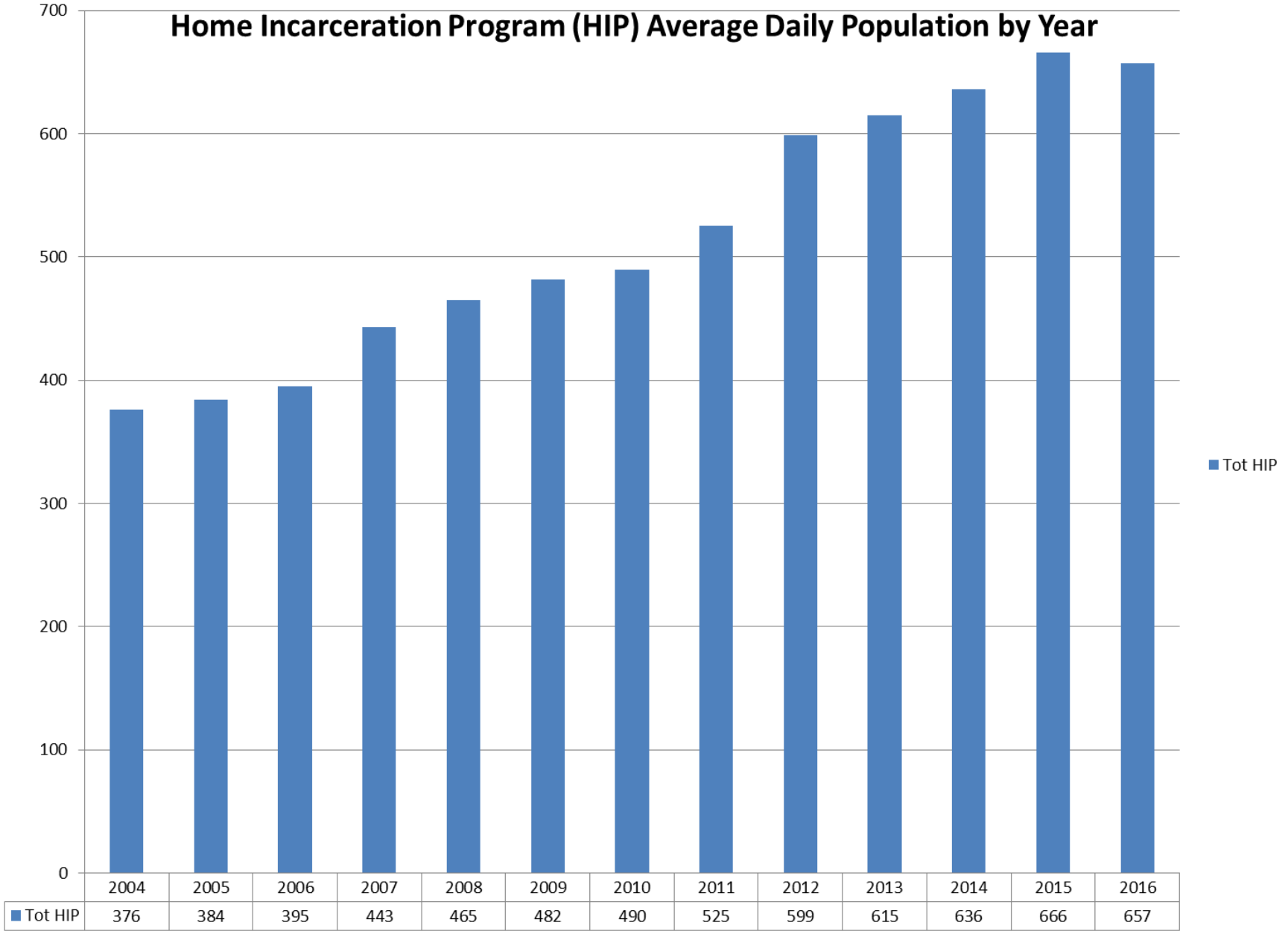


Average Length of Stay by Year

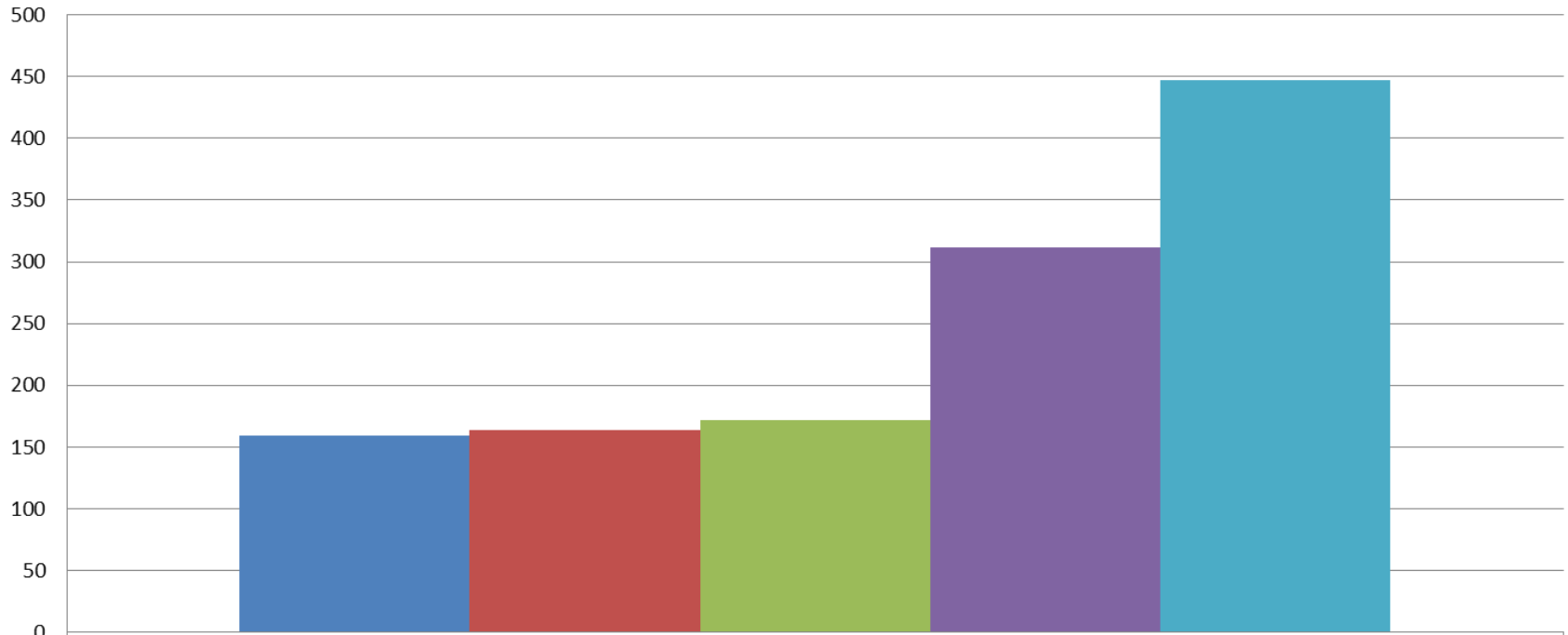


ALOS	2004	2005	2006	2007	2008	2009	2010	2011	2012	2013	2014	2015	2016
ALOS	18	19	17	17	16	13	14	15	16	16	20	20	23

Home Incarceration Program (HIP) Average Daily Population by Year



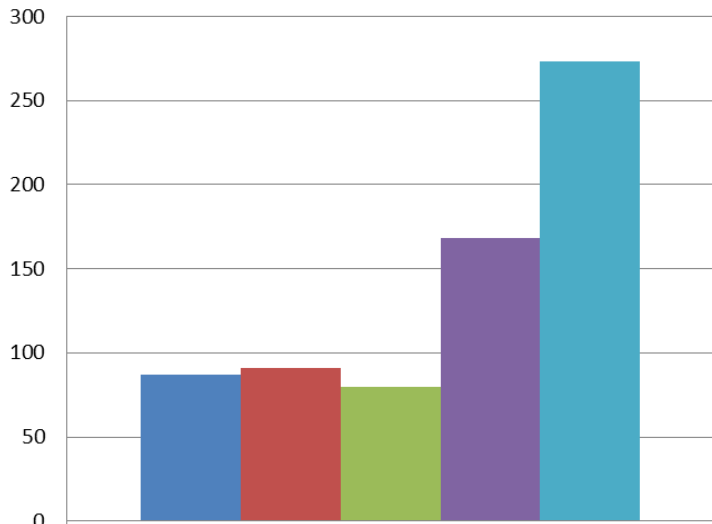
Average Total State Inmate Population 2013-2017



Avg Tot State Inmates

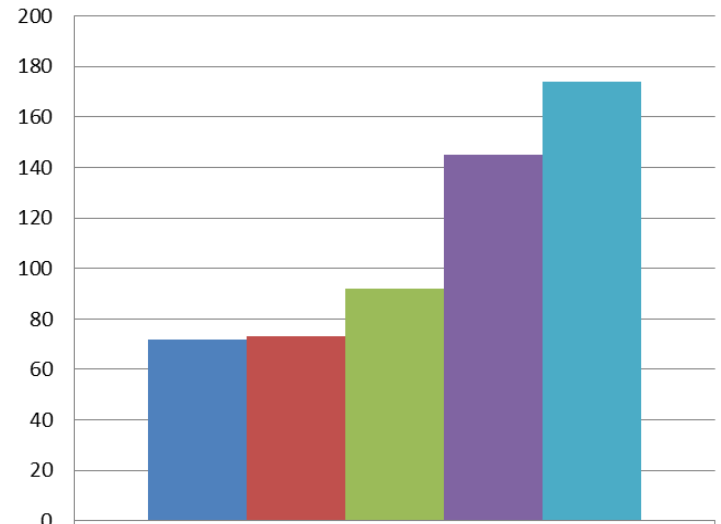
■ 2013	159
■ 2014	164
■ 2015	172
■ 2016	312
■ 2017*	447

Average Controlled Intake by Year 2013-2017



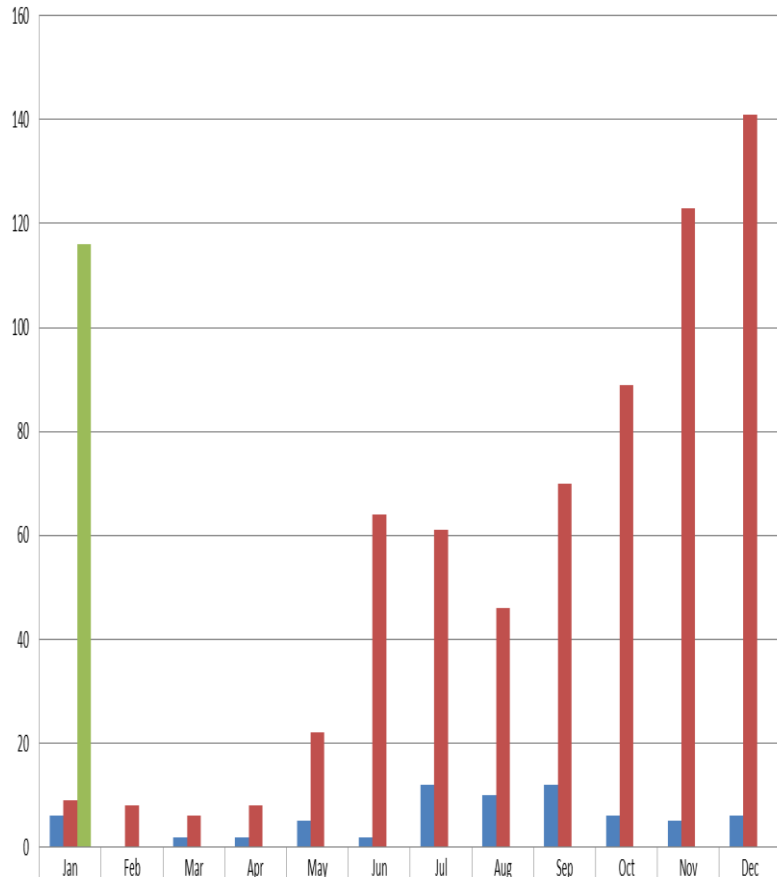
Controlled Intake	
■ 2013	87
■ 2014	91
■ 2015	80
■ 2016	168
■ 2017*	273

Average Probation and Parole State Inmates by Year 2013-2017



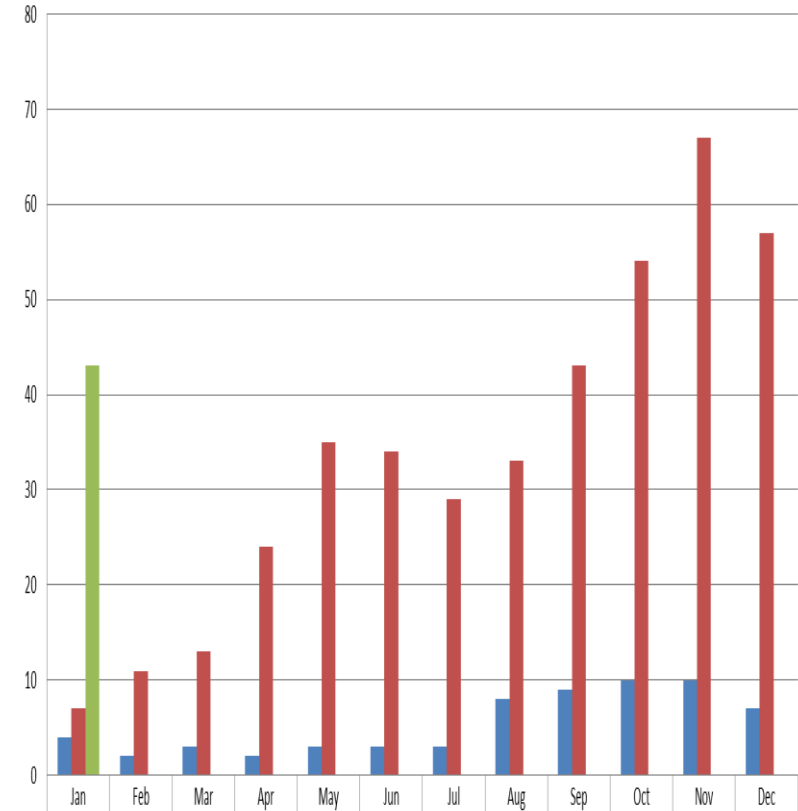
Probation & Parole	
■ 2013	72
■ 2014	73
■ 2015	92
■ 2016	145
■ 2017*	174

Average Controlled Intake Over 45 Days by Month and Year 2015-2017



2015	6	0	2	2	5	2	12	10	12	6	5	6
2016	9	8	6	8	22	64	61	46	70	89	123	141
2017	116											

Average Probation and Parole State Inmates Over 45 Days by Month and Year 2015-2017



2015	4	2	3	2	3	3	3	8	9	10	10	7
2016	7	11	13	24	35	34	29	33	43	54	67	57
2017	43											

Operations

Staffing Totals (2016)

Number of Budgeted Positions: 590

Number Sworn: 456

Number Civilian: 134



Operations

Staff to Inmate Ratio

Jail Complex - 11.6 to 1

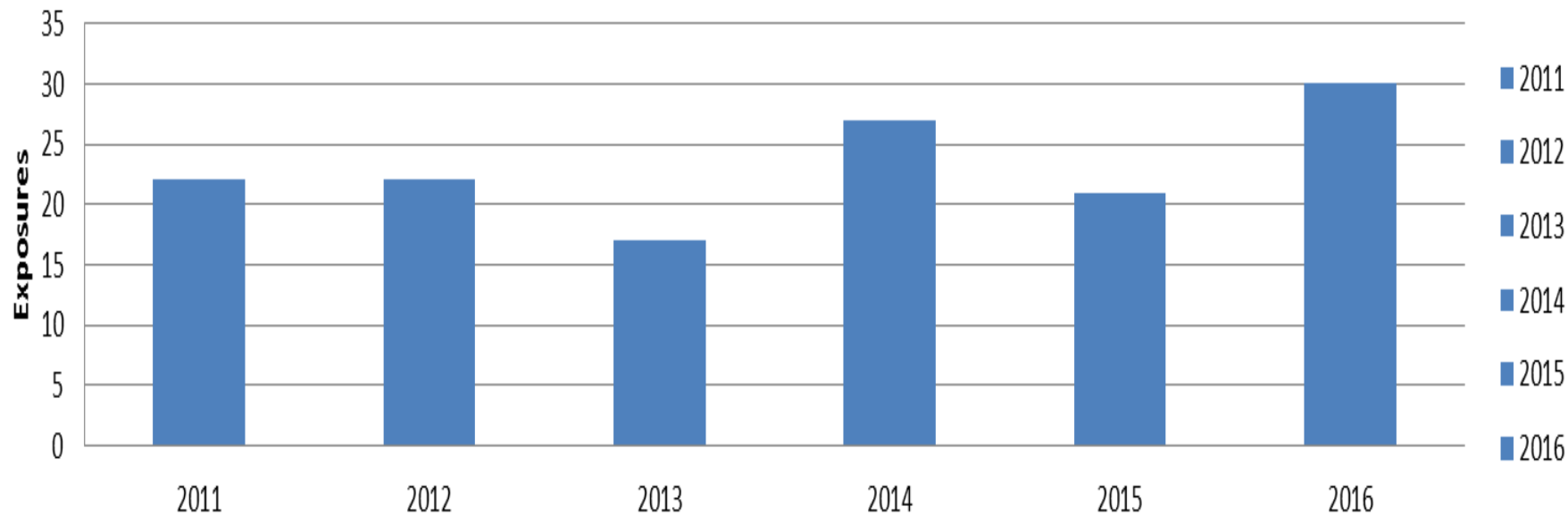
Hall of Justice – 9 to 1

CCC – 9.8 to 1

HIP – 39.3 to 1

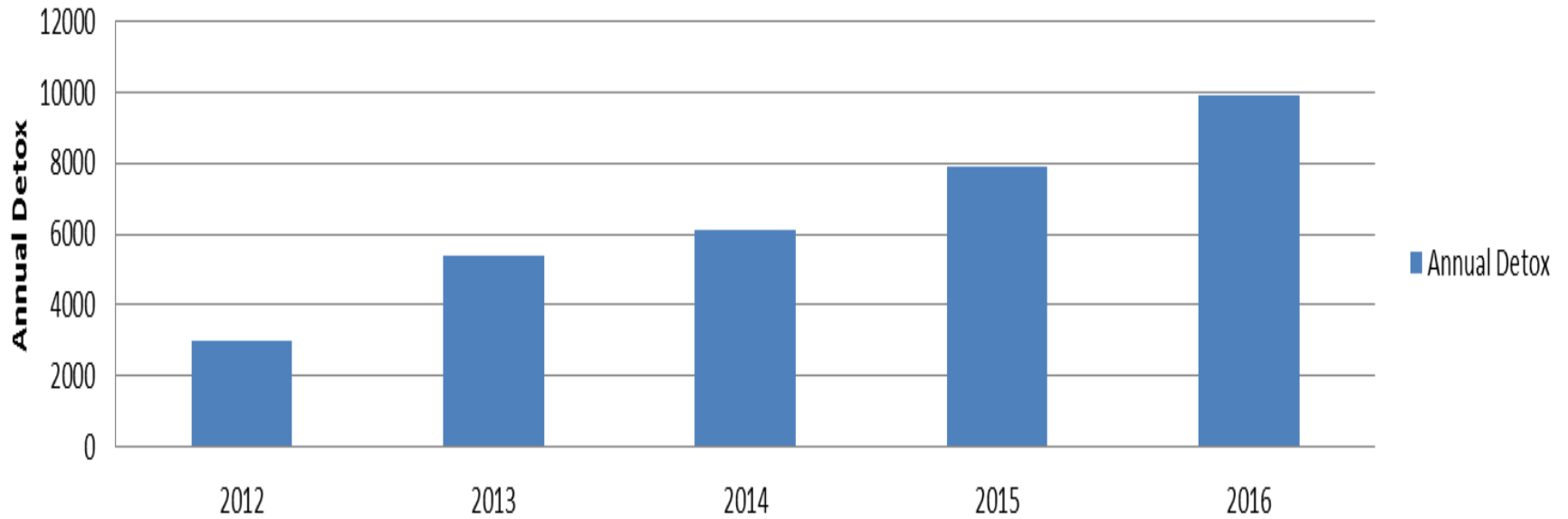


Staff Exposure



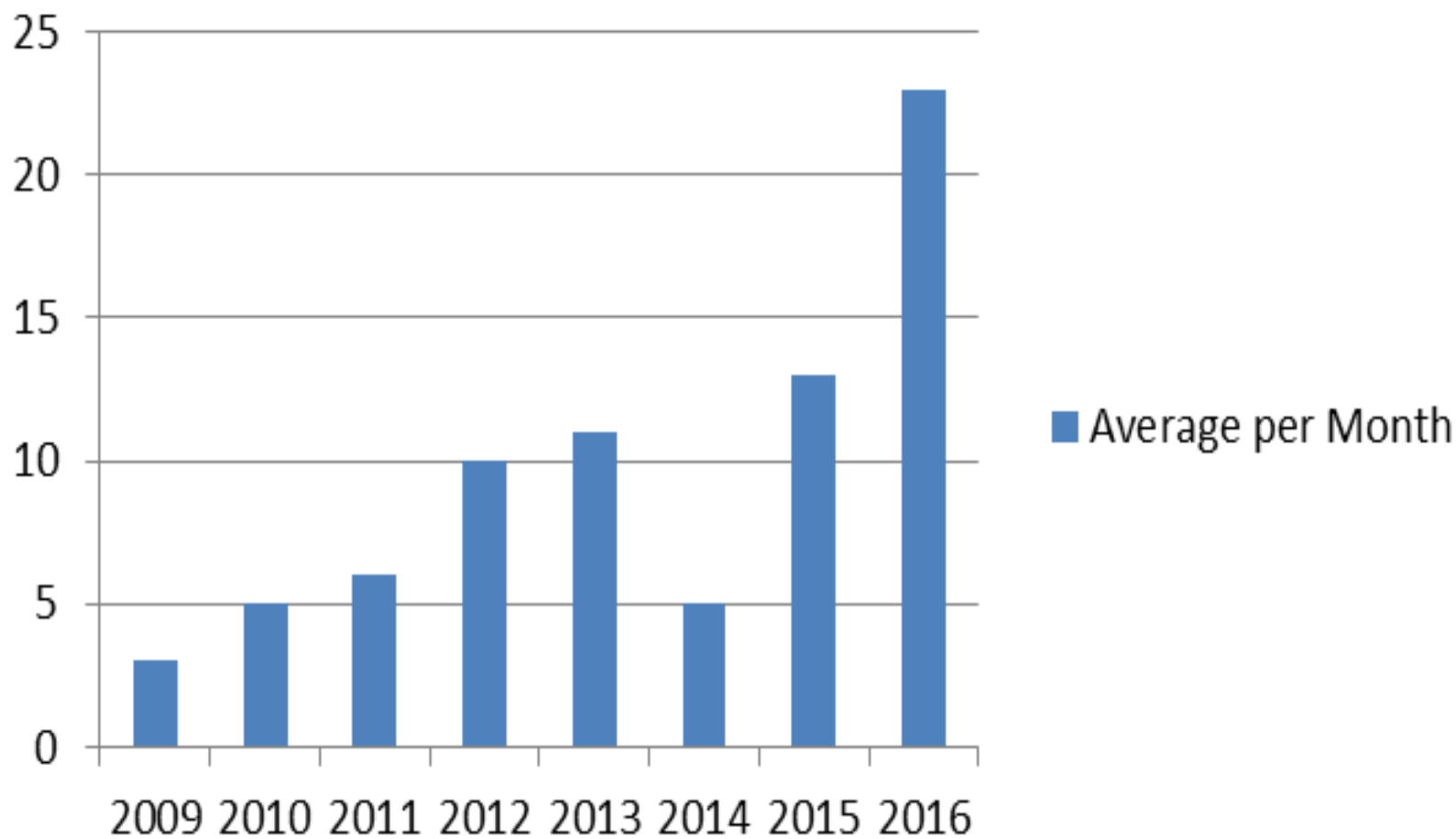
	2011	2012	2013	2014	2015	2016
Total Exposures	22	22	17	27	21	30
Puncture	4	2	2	2	3	0
Thrown	12	11	9	16	14	4
Assault	1	2	0	2	0	8
Spit	3	4	4	3	4	16
Bite	2	3	1	4	0	2
First Aid	0	0	1	0	0	0

Annual Detox

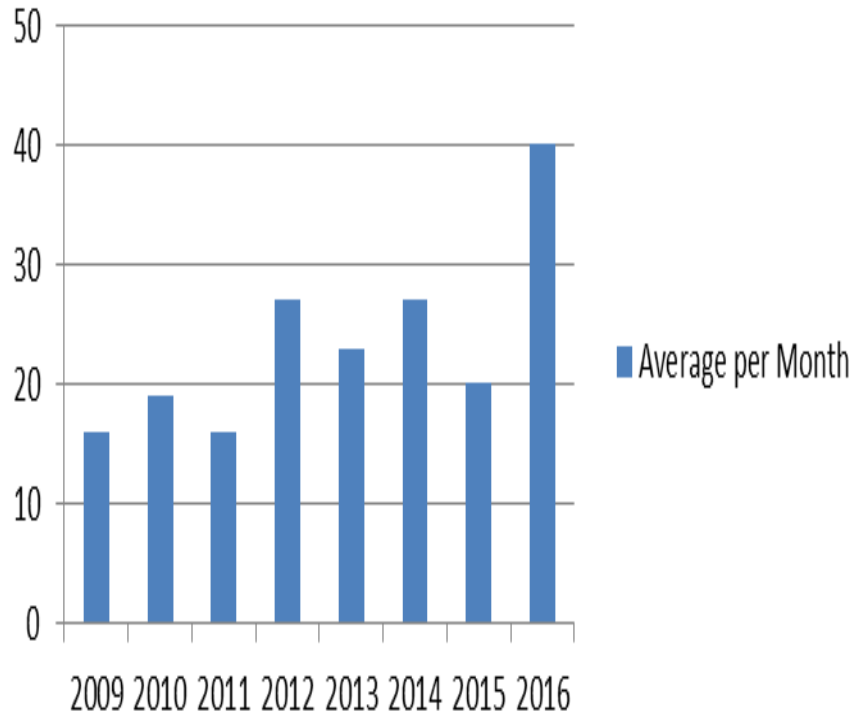


	2012	2013	2014	2015	2016
Total Detox	2,992	5,379	6,100	7,893	9,916
Benzodiazapines	601	1,480	2,077	2,713	2,898
ETOH (Alcohol)	847	1,474	1,709	2,597	3,485
Opiates	2,909	3,851	4,290	5,055	6,115
Release prior to completing detox	Not Tracked	Not Tracked	Not Tracked	3,658	4,359

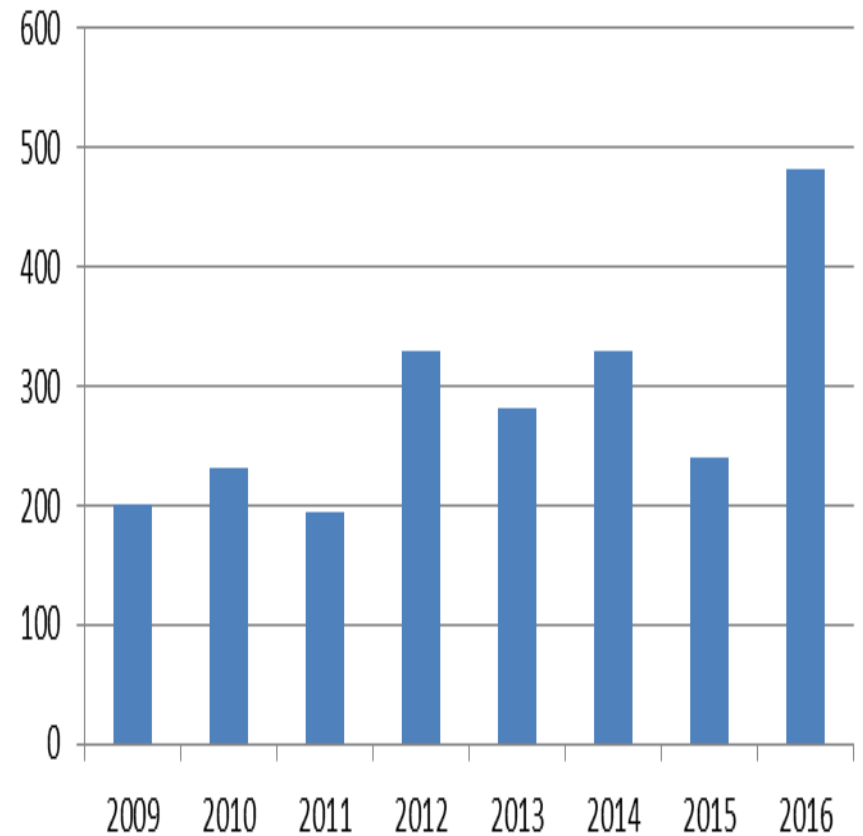
EMS Transports



Average Hospital Days Consumed by Month



Hospital Days Consumed by Year



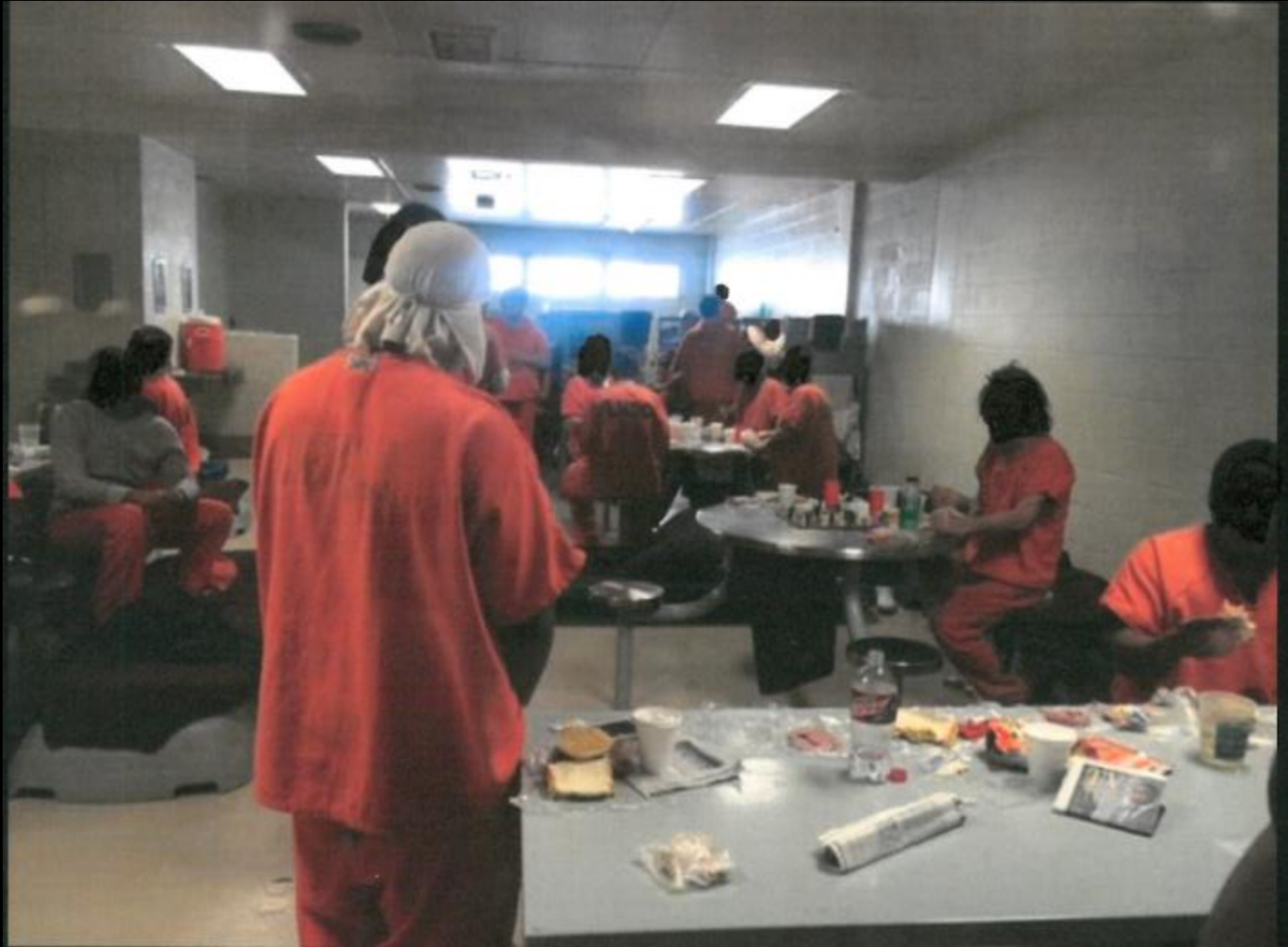


Main Jail Complex Interior Dorm





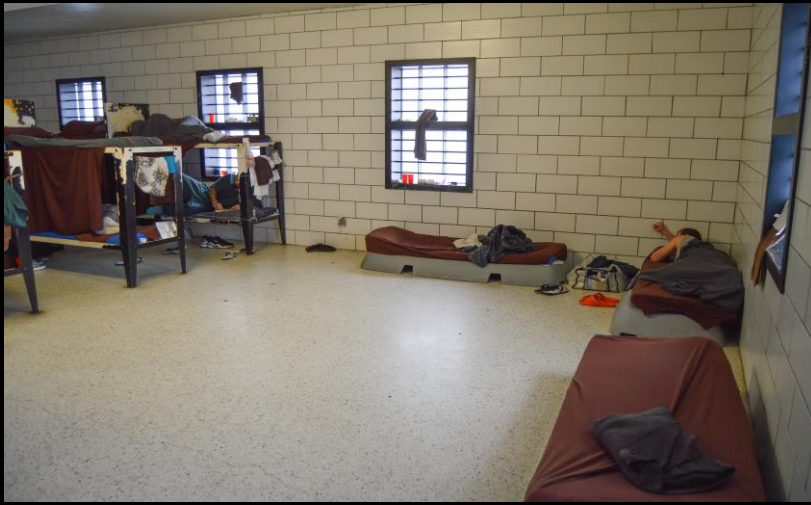








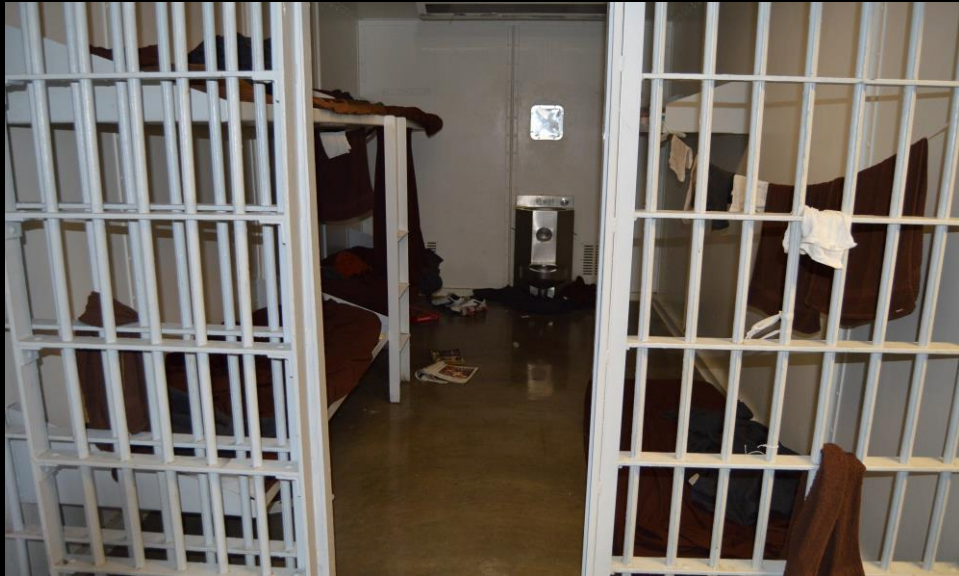




Community Corrections Center
(CCC)
Interior Dorm



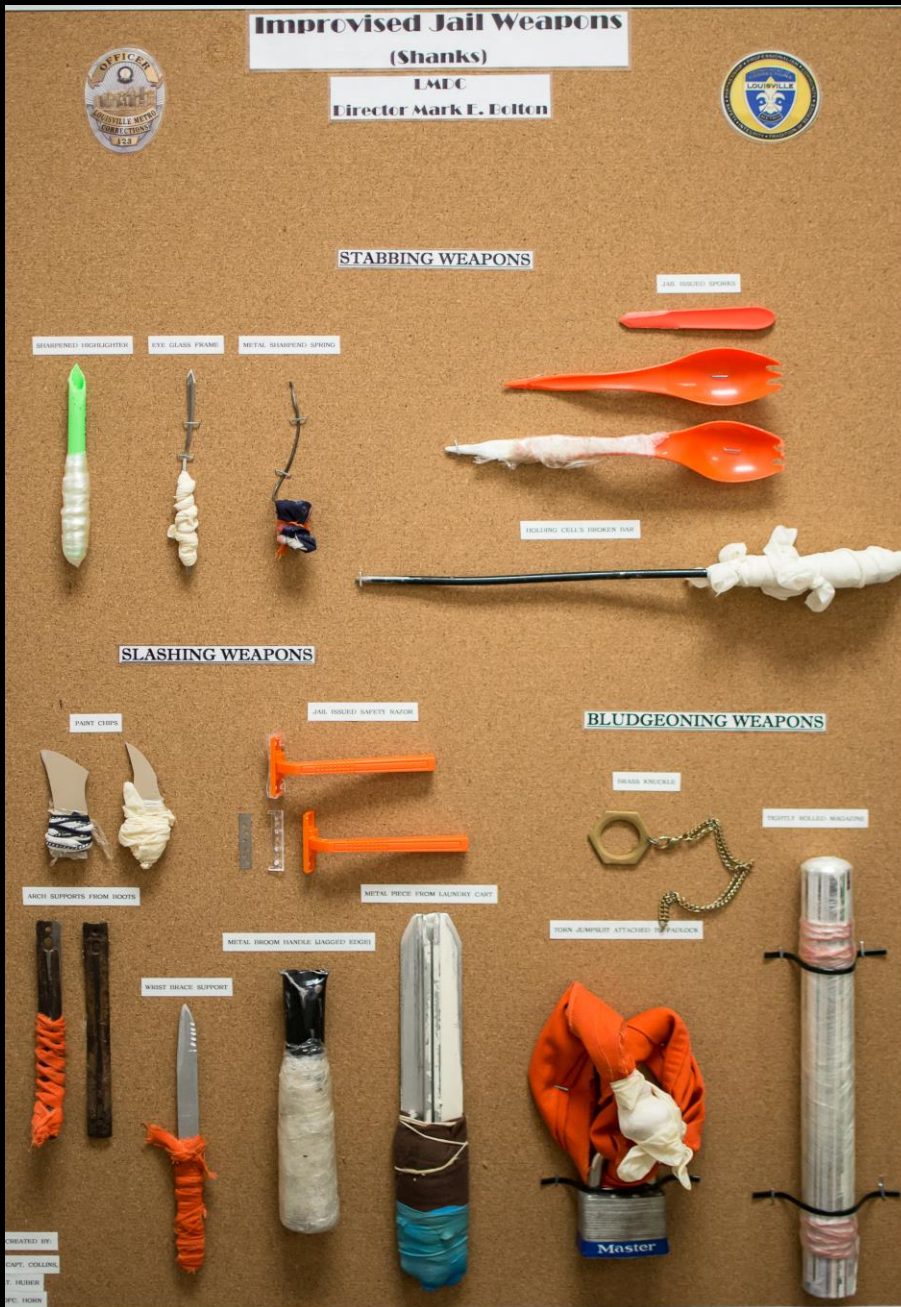




LMPD Headquarters 3rd
Floor
Interior Living Areas







Louisville Metro Department of Corrections

Contraband