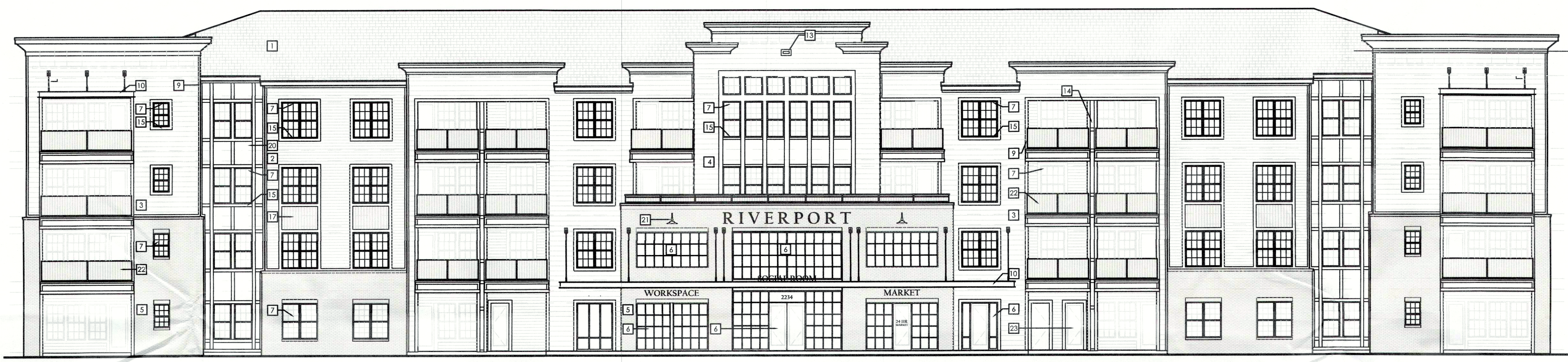


- 42'-6 3/4" TRUSS BRG
- 8'-0" HEAD HT
- 33'-5 5/8" T.O. PLYWD
- 31'-8 7/8" TRUSS BRG
- 8'-0" HEAD HT
- 22'-7 3/4" T.O. PLYWD
- 20'-11" TRUSS BRG
- 8'-0" HEAD HT
- 11'-9 7/8" T.O. PLYWD
- 10'-1 1/8" TRUSS BRG
- 8'-0" HEAD HT
- 0'-0" T.O. SLAB
- 0'-8" ASSUMED GRADE

2 BUILDING TYPE I - RIGHT SIDE ELEVATION
SCALE: 3/32"=1'-0"



- 42'-6 3/4" TRUSS BRG
- 8'-0" HEAD HT
- 33'-5 5/8" T.O. PLYWD
- 31'-8 7/8" TRUSS BRG
- 8'-0" HEAD HT
- 22'-7 3/4" T.O. PLYWD
- 20'-11" TRUSS BRG
- 8'-0" HEAD HT
- 11'-9 7/8" T.O. PLYWD
- 10'-1 1/8" TRUSS BRG
- 8'-0" HEAD HT
- 0'-0" T.O. SLAB
- 0'-8" ASSUMED GRADE

1 BUILDING TYPE I - FRONT ELEVATION
SCALE: 3/32"=1'-0"

LOUISVILLE APARTMENTS
LOUISVILLE, KENTUCKY

LIV DEVELOPMENT
2204 LAKESHORE DRIVE, SUITE 450
BIRMINGHAM, AL 35209
PH: 205-484-2849



1770 fennell street
maitland florida 32751-7208
407 660 8900 f: 407 875 9948
www.cbaarchitects.com

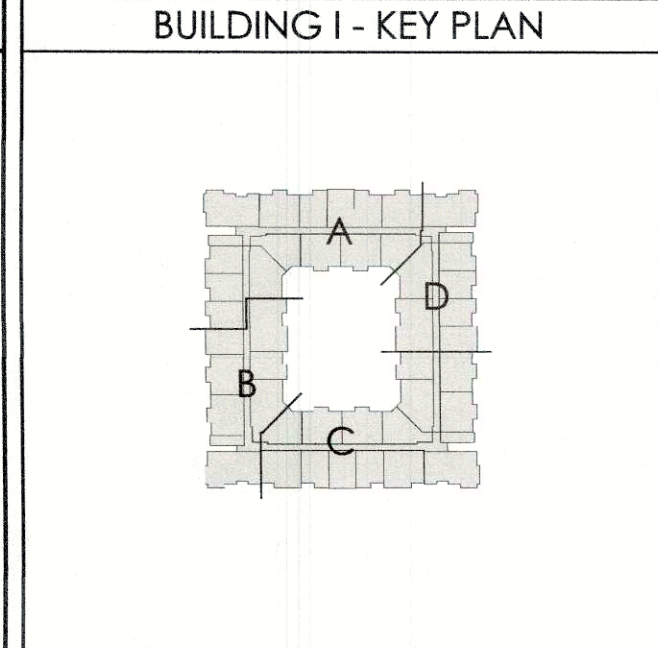
BUILDING TYPE I
FRONT AND RIGHT
ELEVATIONS

RECEIVED
SEP 13 2019
PLANNING &
DESIGN SERVICES

date: 09-16-19
job no: 4204.19
drawn by: CBA
reviewed by: CBA
file: 4204A211
issue history:

ELEVATION KEYED NOTES	
1 ARCHITECTURAL GRADE ASPHALT SHINGLES ON #30 FEET OVER ROOF SHEATHING ON PRE-ENGINEERED WOOD TRUSSES ANCHORED @ EA. END.	17 1/2" TRIM ON FIBER CEMENT PANEL SIDING OVER BUILDING WRAP OVER EXTERIOR WALL PER MANUFACTURER'S SPECIFICATIONS.
2 FIBER CEMENT LAP SIDING WITH 6" REVEAL OVER BUILDING WRAP OVER EXTERIOR WALL PER MANUFACTURER'S RECOMMENDATIONS.	18 ALUMINUM AWNING
3 FIBER CEMENT LAP SIDING WITH 10" REVEAL OVER BUILDING WRAP OVER EXTERIOR WALL PER MANUFACTURER'S RECOMMENDATIONS.	19 ARCHITECTURAL GRADE DOWNSPOUT AND GUTTER SYSTEM. COLOR TO MATCH ROOF.
4 ARTISAN FIBER CEMENT LAP SIDING WITH 10" REVEAL OVER EXTERIOR WALL PER MANUFACTURER'S SPECIFICATIONS.	20 42" HIGH ALUMINUM GUARD RAIL SYSTEM
5 BRICK VENER WITH 1" AIR SPACE ON BUILDING WRAP ON SHEATHING ON 2X WOOD STUD WALL SYSTEM.	21 LIGHT FIXTURE - REFER TO ELECTRICAL DRAWINGS FOR MODEL & MANUFACTURER
6 STOREFRONT GLAZING SYSTEM. SEE FLOOR PLANS AND SCHEDULES.	22 4" X 8" OVERFLOW SCUPPER.
7 WHITE VINYL WINDOW. SEE FLOOR PLANS AND DOOR SCHEDULE.	23 BALCONY COLUMNS - FIBER CEMENT PANELS WITH CASING AT INTERSECTIONS. SEE DETAIL 21/A7.42 (TYPICAL).
8 GARAGE DOOR. SEE FLOOR PLANS AND DOOR SCHEDULE.	24 WINDOW TRIM AT SIDING TO HAVE 6" HEAD AND STOOL, 6" JAMBS AND 3/4" SILL.
	25 MECHANICAL VENT, PAINTED TO MATCH ADJACENT WALL COLOR.
	26 BOARD AND BATTEN FIBER CEMENT
	27 METAL GATE. REFER TO PLANS AND DOOR SCHEDULE.
	28 DECORATIVE METAL GRILL
	29 FIBER CEMENT PANEL OVER BUILDING WRAP OVER EXTERIOR WALL PER MANUFACTURER'S SPECIFICATIONS
	30 EXTERIOR DOOR SYSTEM. SEE PLANS AND DOOR SCHEDULE.
	31 OPEN BEYOND
	32 STANDING METAL SEAM ROOF
	33 DECORATIVE SHUTTERS

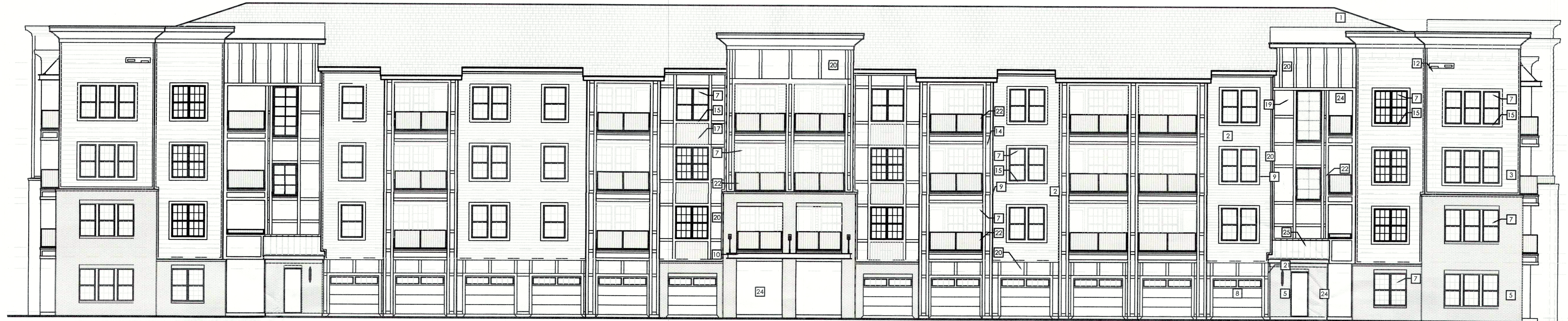
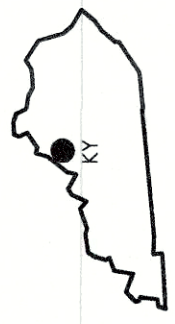
TYPICAL ELEVATION NOTES	
1. TYPICAL EXTERIOR CLADDING - FIBER REINFORCED CEMENTITIOUS SIDING ON EXTERIOR SHEATHING WITH INTEGRATED WEATHER BARRIER. TAPE ALL CORNERS IN STRICT ACCORDANCE WITH MANUFACTURER'S RECOMMENDATIONS. SEE SHEET A7.81 FOR MORE INFORMATION.	6. ALL FINISH GRADE SHALL BE MINIMUM 8" BELOW FINISH FLOOR AND SLOPE AWAY FROM BUILDING AT MIN 2% RATE.
2. ALL EXTERIOR DOOR TRIM TO BE FIBER REINFORCED CEMENTITIOUS BOARD. REFER TO ELEVATIONS AND DETAILS FOR SIZES. ALL EXTERIOR WINDOW TRIM TO BE FOAM LTD SYSTEM.	7. PROVIDE SILICONE SEALANT AT ALL INSIDE SIDING CORNERS. REFER TO DETAILS 10 & 11 ON SHEET A7.31 FOR CORNER DETAILS.
3. ALL PENETRATIONS MUST BE PROPERLY FLASHED AND/OR SEALED. ATTACHMENTS THROUGH EXTERIOR SKIN SHALL BE SET IN BED OF SEALANT.	8. PROVIDE SILICONE SEALANT W/ BOND BREAKER (TO PREVENT 3-SIDED ADHESION) AT TOP OF HORIZ. BUILDING BANDS.
4. ALL BUILDING MOUNTED EQUIPMENT, PANELS, ETC. SHALL BE MOUNTED AFTER EXT. FINISH IS APPLIED AND PAINTED. IF SEQUENCING OF CONSTRUCTION REQUIRES MOUNTING PRIOR TO THIS, CONTRACTOR SHALL SUBMIT METHOD OF MOUNTING AND WATERPROOFING TO ARCHITECT FOR APPROVAL.	9. PROVIDE SEALANT JOINTS AT INTERFACE BETWEEN DISSIMILAR SUBSTRATES, SUCH AS BREEZEWAY CEILING, BREEZEWAY EXTERIOR EDGES, EXTERIOR WALL TO SPLIT AND CEILING CONDITIONS ETC.
5. ALL EXTERIOR RAILS TO BE STEEL.	10. PROVIDE POSITIVE SLOPE 1/2" AT TOP OF HORIZONTAL PROJECTIONS. TYPICAL.
	11. ALL ATTACHMENT AND PENETRATION THRU THE EXTERIOR CLADDING SYSTEM MUST BE SEALED AGAINST POTENTIAL WATER INTRUSION. REFER TO 1/A7.42 FOR DETAIL LOCATIONS.
	12. EXTERIOR WALLS TO BE COATED WITH PAINT COATING PRIOR TO INSTALLATION OF THE DOWNSPOUTS, TYP.
	13. LAP SIDING SHALL BE LAPPED A MINIMUM OF 1/2" INCHES AND SHALL HAVE THE ENDS SEALED WITH CAULKING. COVERED WITH A H-SECTION JOINT COVER OR LOCATED OVER A STRIP OF FLASHING.
	14. REFER TO SHEET A7.03 FOR BUILDING WRAP INSTALLATION PRACTICES AT DOORS AND WINDOWS.
	15. PROVIDE SUFFICIENT BLOCKING AT ALL CANOPY, AWNINGS AND BRACKET ATTACHMENTS. CONFORM WITH SHOP DRAWINGS OF ELEMENTS.
	16. CONTRACTOR TO COORDINATE MATERIAL AND PRODUCT CONFLICTS PRIOR TO INSTALLATION.
	17. INDICATES GUTTER AND DOWNSPOUT LOCATION. SEE DETAIL 7/A7.51, 8/A7.51, 14/A7.51 AND 15/A7.51



LOOKS SCHEMATIC DESIGN (NOT FOR CONSTRUCTION)

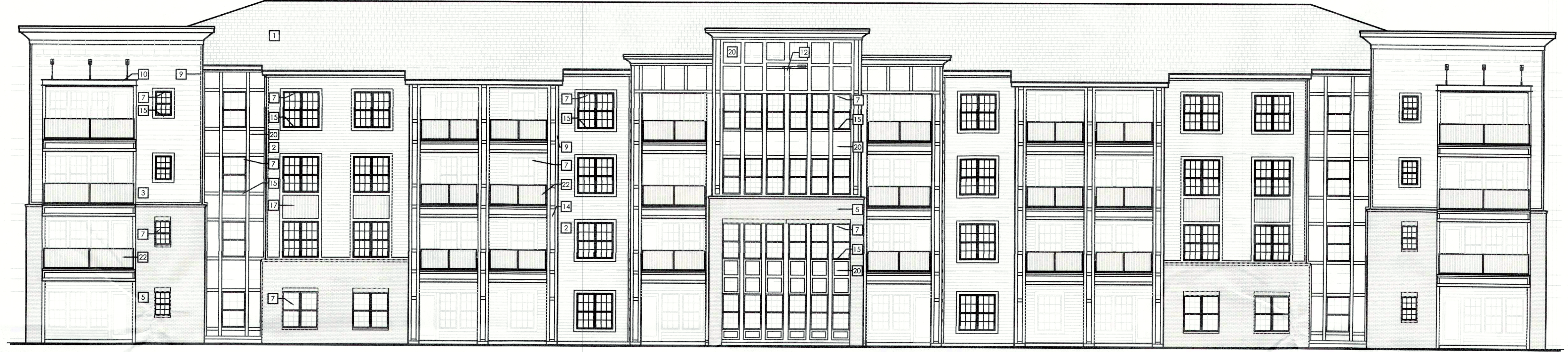
A2.11

19-CAT3-007



- 42'-6 3/4" TRUSS BRG 8'-0" HEAD HT
- 33'-5 5/8" T.O. PLYWD 31'-8 7/8" TRUSS BRG 8'-0" HEAD HT
- 22'-7 3/4" T.O. PLYWD 20'-11" TRUSS BRG 8'-0" HEAD HT
- 11'-9 7/8" T.O. PLYWD 10'-1 1/8" TRUSS BRG 8'-0" HEAD HT
- 0'-0" T.O. SLAB -0'-8" ASSUMED GRADE

2 BUILDING TYPE I - LEFT SIDE ELEVATION SCALE: 3/32"=1'-0"



- 42'-6 3/4" TRUSS BRG 8'-0" HEAD HT
- 33'-5 5/8" T.O. PLYWD 31'-8 7/8" TRUSS BRG 8'-0" HEAD HT
- 22'-7 3/4" T.O. PLYWD 20'-11" TRUSS BRG 8'-0" HEAD HT
- 11'-9 7/8" T.O. PLYWD 10'-1 1/8" TRUSS BRG 8'-0" HEAD HT
- 0'-0" T.O. SLAB -0'-8" ASSUMED GRADE

1 BUILDING TYPE I - REAR AND LEFT ELEVATIONS SCALE: 3/32"=1'-0"

LOUISVILLE APARTMENTS
LOUISVILLE, KENTUCKY

LIV DEVELOPMENT
2204 LAKESHORE DRIVE, SUITE 450
BIRMINGHAM, AL 35209
PH. 205-484-2849

cba
charlan • brock
associates

architects • planners

1770 fennell street
maitland florida 32751-7208
407 660 8900 f: 407 875 9948
www.cbaarchitects.com

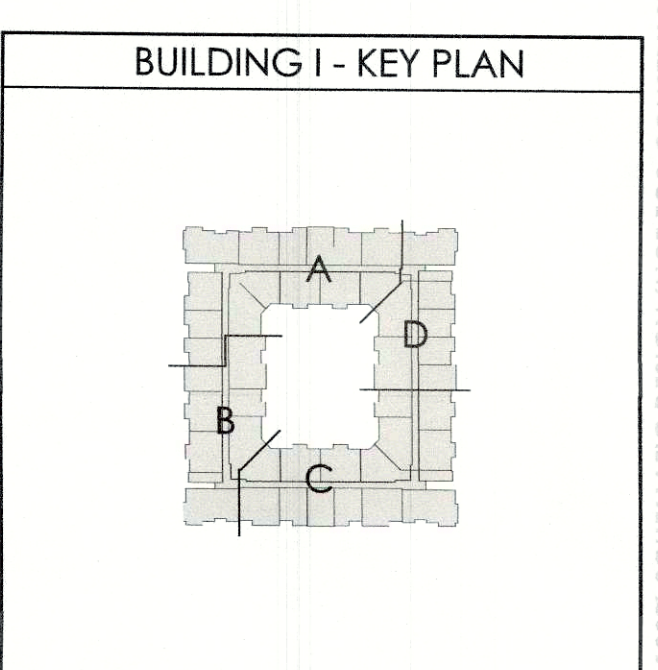
BUILDING TYPE I
REAR AND LEFT
ELEVATIONS

RECEIVED
SEP 19 2019
PLANNING &
DESIGN SERVICES

date: 09-16-19
job no: 4204.19
drawn by: CBA
reviewed by: CBA
file: 4204A212
issue history:

ELEVATION KEYED NOTES	
1 ARCHITECTURAL GRADE ASPHALT SHINGLES ON #30 FELT OVER ROOF SHEATHING ON PRE-ENGINEERED WOOD TRUSSES ANCHORED @ EA. END.	7 3/4" TRIM ON FIBER CEMENT PANEL SIDING OVER BUILDING WRAP OVER EXTERIOR WALL PER MANUFACTURER'S SPECIFICATIONS.
2 FIBER CEMENT LAP SIDING WITH 6" REVEAL OVER BUILDING WRAP OVER EXTERIOR WALL PER MANUFACTURER'S RECOMMENDATIONS.	10 ALUMINUM AWNING
3 FIBER CEMENT LAP SIDING WITH 10" REVEAL OVER BUILDING WRAP OVER EXTERIOR WALL PER MANUFACTURER'S RECOMMENDATIONS.	11 ARCHITECTURAL GRADE DOWNSPOUT AND GUTTER SYSTEM. COLOR TO MATCH ROOF. CONDUCTOR HEAD WITH ARCHITECTURAL GRADE DOWNSPOUT.
4 ARTISAN FIBER CEMENT LAP SIDING WITH 10" REVEAL OVER EXTERIOR WALL PER MANUFACTURER'S SPECIFICATIONS.	12 4" X 8" OVERFLOW SCUPPER.
5 BRICK VENEER WITH 1" AIR SPACE ON BUILDING WRAP ON SHEATHING ON 2X WOOD STUD WALL SYSTEM.	13 BALCONY COLUMNS - FIBER CEMENT PANELS WITH CASING AT INTERSECTIONS. SEE DETAIL 2/A7.42 (TYPICAL).
6 STOREFRONT GLAZING SYSTEM. SEE FLOOR PLANS AND SCHEDULES	14 MECHANICAL VENT, PAINTED TO MATCH ADJACENT WALL COLOR
7 WHITE VINYL WINDOW. SEE FLOOR PLANS AND DOOR SCHEDULE	15 BOARD AND BATTEN FIBER CEMENT
8 GARAGE DOOR. SEE FLOOR PLANS AND DOOR SCHEDULE	16 METAL GATE. REFER TO PLANS AND DOOR SCHEDULE
9 2" TRIM ON FIBER CEMENT PANEL SIDING OVER BUILDING WRAP OVER EXTERIOR WALL PER MANUFACTURER'S SPECIFICATIONS.	17 DECORATIVE METAL GRILL
10 ALUMINUM AWNING	18 FIBER CEMENT PANEL OVER BUILDING WRAP OVER EXTERIOR WALL PER MANUFACTURER'S SPECIFICATIONS
11 ARCHITECTURAL GRADE DOWNSPOUT AND GUTTER SYSTEM. COLOR TO MATCH ROOF. CONDUCTOR HEAD WITH ARCHITECTURAL GRADE DOWNSPOUT.	19 LIGHT FIXTURE - REFER TO ELECTRICAL DRAWINGS FOR MODEL & MANUFACTURER
12 4" X 8" OVERFLOW SCUPPER.	20 42" HIGH ALUMINUM GUARD RAIL SYSTEM
13 BALCONY COLUMNS - FIBER CEMENT PANELS WITH CASING AT INTERSECTIONS. SEE DETAIL 2/A7.42 (TYPICAL).	21 EXTERIOR DOOR SYSTEM. SEE PLANS AND DOOR SCHEDULE.
14 MECHANICAL VENT, PAINTED TO MATCH ADJACENT WALL COLOR	22 OPEN BEYOND
15 BOARD AND BATTEN FIBER CEMENT	23 STANDING METAL SEAM ROOF
16 METAL GATE. REFER TO PLANS AND DOOR SCHEDULE	24 DECORATIVE SHUTTERS

TYPICAL ELEVATION NOTES	
1. TYPICAL EXTERIOR CLADDING - FIBER REINFORCED CEMENTITIOUS SIDING ON EXTERIOR SHEATHING WITH INTEGRATED WEATHER BARRIER. TAPE ALL CORNERS IN STRICT ACCORDANCE WITH MANUFACTURER'S RECOMMENDATIONS. SEE SHEET A7.81 FOR MORE INFORMATION.	6. ALL FINISH GRADE SHALL BE MINIMUM 8" BELOW FINISH FLOOR AND SLOPE AWAY FROM BUILDING AT MIN 2% RATE.
2. ALL EXTERIOR DOOR TRIM TO BE FIBER REINFORCED CEMENTITIOUS BOARD. REFER TO ELEVATIONS AND DETAILS FOR SIZES. ALL EXTERIOR WINDOW TRIM TO BE FOAM L.I.D. SYSTEM.	7. PROVIDE SILICONE SEALANT AT ALL INSIDE SIDING CORNERS. REFER TO DETAILS 10 & 11 ON SHEET A7.31 FOR CORNER DETAILS.
3. ALL PENETRATIONS MUST BE PROPERLY FLASHED AND/OR SEALED. ATTACHMENTS THROUGH EXTERIOR SKIN SHALL BE SET IN BED OF SEALANT.	8. PROVIDE SILICONE SEALANT W/ BOND BREAKER (TO PREVENT 3-SIDED ADHESION) AT TOP OF HOKE BUILDING BANDS.
4. ALL BUILDING MOUNTED EQUIPMENT, PANELS, ETC. SHALL BE MOUNTED AFTER EXT. FINISH IS APPLIED AND PAINTED. IF SEQUENCING OF CONSTRUCTION REQUIRES MOUNTING PRIOR TO THIS, CONTRACTOR SHALL SUBMIT METHOD OF MOUNTING AND WATERPROOFING TO ARCHITECT FOR APPROVAL.	9. PROVIDE SEALANT JOINTS AT INTERFACE BETWEEN DISSIMILAR SUBSTRATES, SUCH AS BREAKWAY CEILING, BREAKWAY EXTERIOR EDGES, EXTERIOR WALL TO SOFFIT AND CEILING CONDITIONS ETC.
5. ALL EXTERIOR RAILS TO BE STEEL.	10. PROVIDE POSITIVE SLOPE 1:2 AT TOP OF HORIZONTAL PROJECTIONS. TYPICAL.
	11. ALL ATTACHMENT AND PENETRATION THRU THE EXTERIOR CLADDING SYSTEM MUST BE SEALED AGAINST POTENTIAL WATER INTRUSION. REFER TO 1/A7.42 FOR DETAIL LOCATIONS.



Friday, September 13, 2019 P:\4204 - LIV CHAMBERLIN LOUISVILLE AP\3\DRAWINGS\APARTMENT\00_CURRENT\4204A213.dwg



2 BUILDING TYPE I - COURTYARD LEFT FITNESS ELEVATION

SCALE: 3/32"=1'-0"



1 BUILDING TYPE I - COURTYARD REAR CLUB ELEVATION

SCALE: 3/32"=1'-0"

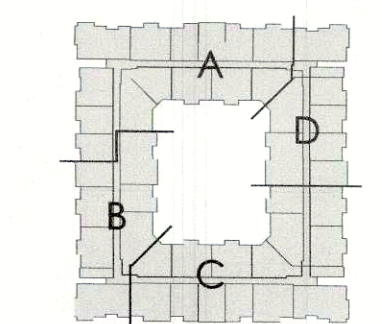
ELEVATION KEYED NOTES

- | | | |
|---|--|---|
| <p>1 ARCHITECTURAL GRADE ASPHALT SHINGLES ON #30 FELT OVER ROOF SHEATHING ON PRE-ENGINEERED WOOD TRUSSES ANCHORED @ EA. END.</p> <p>2 FIBER CEMENT LAP SIDING WITH 6\" REVEAL OVER BUILDING WRAP OVER EXTERIOR WALL PER MANUFACTURER'S RECOMMENDATIONS.</p> <p>3 FIBER CEMENT LAP SIDING WITH 10\" REVEAL OVER BUILDING WRAP OVER EXTERIOR WALL PER MANUFACTURER'S RECOMMENDATIONS.</p> <p>4 ARTISAN FIBER CEMENT LAP SIDING WITH 10\" REVEAL OVER EXTERIOR WALL PER MANUFACTURER'S SPECIFICATIONS.</p> <p>5 BRICK VENEER WITH 1\" AIR SPACE ON BUILDING WRAP ON SHEATHING ON 2X WOOD STUD WALL SYSTEM.</p> <p>6 STOREFRONT GLAZING SYSTEM. SEE FLOOR PLANS AND SCHEDULES.</p> <p>7 WHITE VINYL WINDOW. SEE FLOOR PLANS AND DOOR SCHEDULE.</p> <p>8 GARAGE DOOR. SEE FLOOR PLANS AND DOOR SCHEDULE.</p> | <p>9 1/2\" TRIM ON FIBER CEMENT PANEL SIDING OVER BUILDING WRAP OVER EXTERIOR WALL PER MANUFACTURER'S SPECIFICATIONS.</p> <p>10 ALUMINUM AWNING.</p> <p>11 ARCHITECTURAL GRADE DOWNSPOUT AND GUTTER SYSTEM. COLOR TO MATCH ROOF.</p> <p>12 CONDUCTOR HEAD WITH ARCHITECTURAL GRADE DOWNSPOUT.</p> <p>13 4\" X 8\" OVERFLOW SCUPPER.</p> <p>14 BALCONY COLUMNS - FIBER CEMENT PANELS WITH CASING AT INTERSECTIONS. SEE DETAIL 1/17/42 (TYPICAL).</p> <p>15 WINDOW TRIM AT SIDING TO HAVE 6\" HEAD AND 3/4\" SILL.</p> <p>16 MECHANICAL VENT. PAINTED TO MATCH ADJACENT WALL COLOR.</p> <p>17 BOARD AND BATTEN FIBER CEMENT.</p> <p>18 METAL GATE. REFER TO PLANS AND DOOR SCHEDULE.</p> | <p>19 DECORATIVE METAL GRILL.</p> <p>20 FIBER CEMENT PANEL OVER BUILDING WRAP OVER EXTERIOR WALL PER MANUFACTURER'S SPECIFICATIONS.</p> <p>21 LIGHT FIXTURE - REFER TO ELECTRICAL DRAWINGS FOR MODEL & MANUFACTURER.</p> <p>22 42\" HIGH ALUMINUM GUARD RAIL SYSTEM.</p> <p>23 EXTERIOR DOOR SYSTEM. SEE PLANS AND DOOR SCHEDULE.</p> <p>24 OPEN BEYOND.</p> <p>25 STANDING METAL SEAM ROOF.</p> <p>26 DECORATIVE SHUTTERS.</p> |
|---|--|---|

TYPICAL ELEVATION NOTES

1. TYPICAL EXTERIOR CLADDING - FIBER REINFORCED CEMENTitious SIDING ON EXTERIOR SHEATHING WITH INTEGRATED WEATHER BARRIER. TAPE ALL CORNERS IN STRICT ACCORDANCE WITH MANUFACTURER'S RECOMMENDATIONS. SEE SHEET A7.81 FOR MORE INFORMATION.
2. ALL EXTERIOR DOOR TRIM TO BE FIBER REINFORCED CEMENTitious BOARD. REFER TO ELEVATIONS AND DETAILS FOR SIZES. ALL EXTERIOR WINDOW TRIM TO BE FOAM LITE SYSTEM.
3. ALL PENETRATIONS MUST BE PROPERLY FLASHED AND/OR SEALED. ATTACHMENTS THROUGH EXTERIOR SKIN SHALL BE SET IN BED OF SEALANT.
4. ALL BUILDING MOUNTED EQUIPMENT, PANELS, ETC. SHALL BE MOUNTED AFTER EXT. FINISH IS APPLIED AND PAINTED. IF SEQUENCING OF CONSTRUCTION REQUIRES MOUNTING PRIOR TO THIS, CONTRACTOR SHALL SUBMIT METHOD OF MOUNTING AND WATERPROOFING TO ARCHITECT FOR APPROVAL.
5. ALL EXTERIOR RAILS TO BE STEEL.
6. ALL FINISH GRADE SHALL BE MINIMUM 8\" BELOW FINISH FLOOR AND SLOPE AWAY FROM BUILDING AT MIN 2% RATE.
7. PROVIDE SILICONE SEALANT AT ALL INSIDE SIDING CORNERS. REFER TO DETAILS 1/9 & 1/11 ON SHEET A7.31 FOR CORNER DETAILS.
8. PROVIDE SILICONE SEALANT W/ BOND BREAKER (TO PREVENT 3-SIDED ADHESION) AT TOP OF HORIZ. BUILDING BANDS.
9. PROVIDE SEALANT JOINTS AT INTERFACE BETWEEN DISSIMILAR SUBSTRATES, SUCH AS BREEZEWAY, CEILING, BREEZEWAY EXTERIOR EDGES, EXTERIOR WALL TO SOFFIT AND CEILING CONDITIONS ETC.
10. PROVIDE POSITIVE SLOPE 1:2 AT TOP OF HORIZONTAL PROJECTIONS, TYPICAL.
11. ALL ATTACHMENT AND PENETRATION THRU THE EXTERIOR CLADDING SYSTEM MUST BE SEALED AGAINST POTENTIAL WATER INTRUSION. REFER TO 1/A7.42 FOR DETAIL LOCATIONS.
12. EXTERIOR WALLS TO BE COATED WITH PAINT COATING PRIOR TO INSTALLATION OF THE DOWNSPOUTS, TYP.
13. LAP SIDING SHALL BE LAPPED A MINIMUM OF 1-2 INCHES AND SHALL HAVE THE ENDS SEALED WITH CAULKING. COVERED WITH A H-SECTION JOINT COVER OR LOCATED OVER A STRIP OF FLASHING.
14. REFER TO SHEET A7.03 FOR BUILDING WRAP INSTALLATION PRACTICES AT DOORS AND WINDOWS.
15. PROVIDE SUFFICIENT BLOCKING AT ALL CANOPY, AWNINGS AND BRACKET ATTACHMENTS. CONFIRM WITH SHOP DRAWINGS OF ELEMENTS.
16. CONTRACTOR TO COORDINATE MATERIAL AND PRODUCT CONFLICTS PRIOR TO INSTALLATION.

BUILDING I - KEY PLAN



INDICATES GUTTER AND DOWNSPOUT LOCATION. SEE DETAIL 7/A7.51, 8/A7.51, 14/A7.51 and 15/A7.51

RECEIVED
SEP 13 2019
PLANNING &
DESIGN SERVICES

date: 09-16-19
job no: 4204.19
drawn by: CBA
reviewed by: CBA
file: 4204A213
issue history:

A2.13

19-CATS-0017



**LOUISVILLE APARTMENTS
LOUISVILLE, KENTUCKY**

LIV DEVELOPMENT
2204 LAKESHORE DRIVE, SUITE 450
BIRMINGHAM, AL 35209
PH. 205-464-2849

cba
charlan • brock
associates

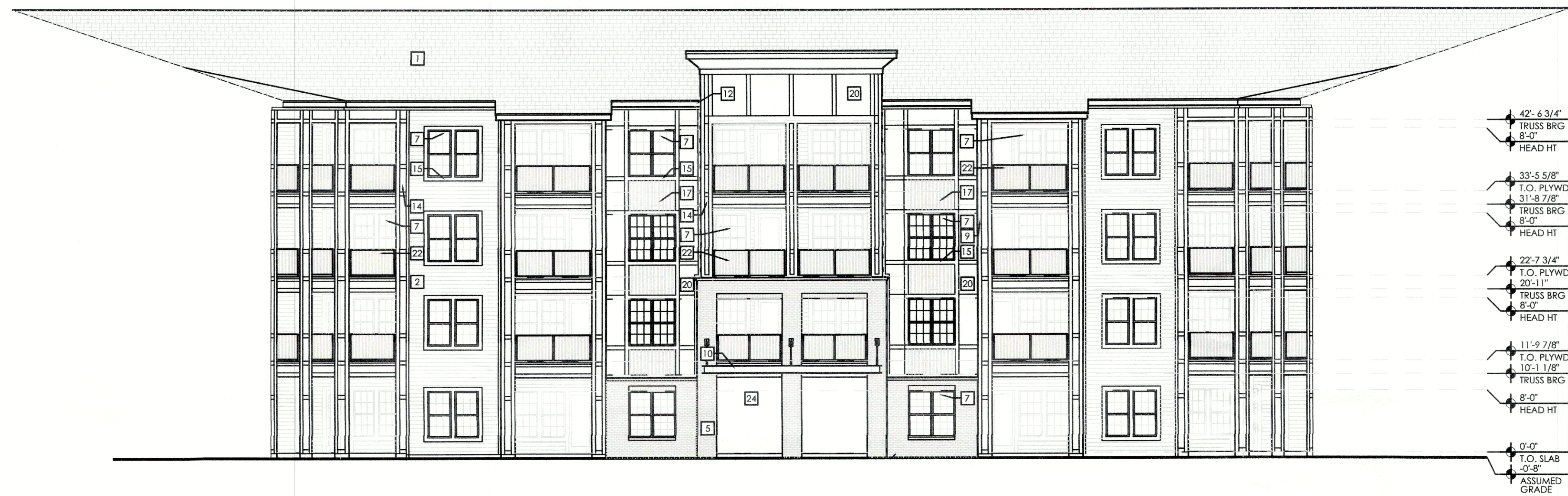
architects • planners

1770 fennell street
maitland florida 32751-7208
407 660 8900 f: 407 875 9948
www.cbaarchitects.com

**BUILDING TYPE I
POOL COURTYARD
ELEVATIONS**

100% ARCHITECTURAL DESIGN (NOT FOR CONSTRUCTION)

charlan, brock & associates, inc. hereby reserves its common law copyright and other property rights in these plans, ideas, and designs. these ideas, designs, and plans are not to be reproduced, changed or copied in any form or manner whatsoever, nor are they to be assigned to any third party, without first obtaining the express written permission from c.b.a. inc. written dimensions shall have precedence over scale dimensions.



2 BUILDING TYPE I - COURTYARD RIGHT ELEVATION

SCALE: 3/32"=1'-0"

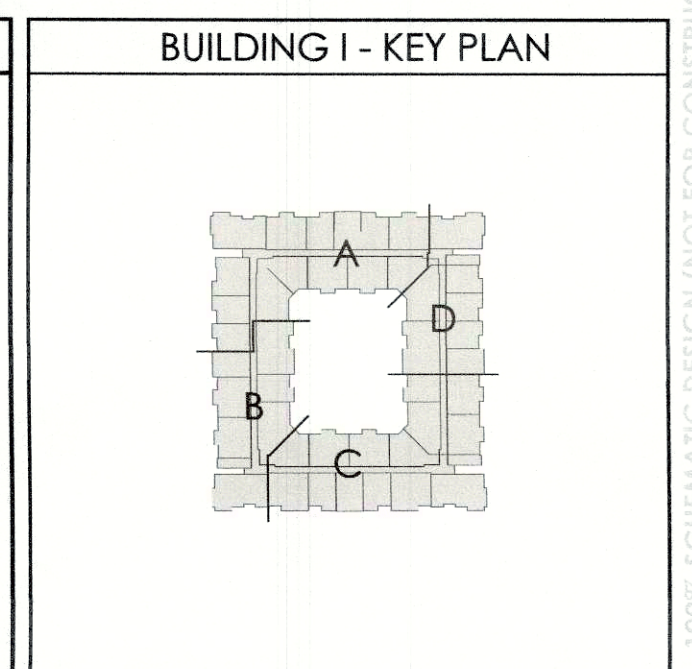


1 BUILDING TYPE I - COURTYARD REAR ELEVATION

SCALE: 3/32"=1'-0"

ELEVATION KEYED NOTES		
1 ARCHITECTURAL GRADE ASPHALT SHINGLES ON #30 FELT OVER ROOF SHEATHING ON PRE-ENGINEERED WOOD TRUSSES ANCHORED @ EA. END.	7 1/2" TRIM ON FIBER CEMENT PANEL SIDING OVER BUILDING WRAP OVER EXTERIOR WALL PER MANUFACTURER'S SPECIFICATIONS.	19 DECORATIVE METAL GRILL
2 FIBER CEMENT LAP SIDING WITH 6" REVEAL OVER BUILDING WRAP OVER EXTERIOR WALL PER MANUFACTURER'S RECOMMENDATIONS.	10 ALUMINUM AWNING	20 FIBER CEMENT PANEL OVER BUILDING WRAP OVER EXTERIOR WALL PER MANUFACTURER'S SPECIFICATIONS
3 FIBER CEMENT LAP SIDING WITH 10" REVEAL OVER BUILDING WRAP OVER EXTERIOR WALL PER MANUFACTURER'S RECOMMENDATIONS.	11 ARCHITECTURAL GRADE DOWNSPOUT AND GUTTER SYSTEM. COLOR TO MATCH ROOF.	21 LIGHT FIXTURE - REFER TO ELECTRICAL DRAWINGS FOR MODEL & MANUFACTURER
4 ARTISAN FIBER CEMENT LAP SIDING WITH 10" REVEAL OVER EXTERIOR WALL PER MANUFACTURER'S SPECIFICATIONS.	12 CONDUCTOR HEAD WITH ARCHITECTURAL GRADE DOWNSPOUT.	22 42" HIGH ALUMINUM GUARD RAIL SYSTEM
5 BRICK VENEER WITH 1" AIR SPACE ON BUILDING WRAP ON SHEATHING ON 2X WOOD STUD WALL SYSTEM.	13 4" X 8" OVERFLOW SCUPPER.	23 EXTERIOR DOOR SYSTEM. SEE PLANS AND DOOR SCHEDULE.
6 STOREFRONT GLAZING SYSTEM. SEE FLOOR PLANS AND DOOR SCHEDULES	14 BALCONY COLUMNS - FIBER CEMENT PANELS WITH CASING AT INTERSECTIONS. SEE DETAIL 21A7.42 (TYPICAL).	24 OPEN BEYOND
7 WHITE VINYL WINDOW. SEE FLOOR PLANS AND DOOR SCHEDULE	15 WINDOW TRIM AT SIDING TO HAVE 6" HEAD AND STOOL, 6" JAMBS AND 3/4" SILL.	25 STANDING METAL SEAM ROOF
8 GARAGE DOOR. SEE FLOOR PLANS AND DOOR SCHEDULE	16 MECHANICAL VENT. PAINTED TO MATCH ADJACENT WALL COLOR	26 DECORATIVE SHUTTERS
	17 BOARD AND BATTEN FIBER CEMENT	
	18 METAL GATE. REFER TO PLANS AND DOOR SCHEDULE	

TYPICAL ELEVATION NOTES		
1. TYPICAL EXTERIOR CLADDING - FIBER REINFORCED CEMENTITIOUS SIDING ON EXTERIOR SHEATHING WITH INTEGRATED WEATHER BARRIER. TAPE ALL CORNERS IN STRICT ACCORDANCE WITH MANUFACTURER'S RECOMMENDATIONS. SEE SHEET A7.81 FOR MORE INFORMATION.	6. ALL FINISH GRADE SHALL BE MINIMUM 8" BELOW FINISH FLOOR AND SLOPE AWAY FROM BUILDING AT MIN 2% RATE.	12. EXTERIOR WALLS TO BE COATED WITH PAINT COATING PRIOR TO INSTALLATION OF THE DOWNSPOUTS, TYP.
2. ALL EXTERIOR DOOR TRIM TO BE FIBER REINFORCED CEMENTITIOUS BOARD. REFER TO ELEVATIONS AND DETAILS FOR SIZES. ALL EXTERIOR WINDOW TRIM TO BE FOAM LTD SYSTEM.	7. PROVIDE SILICONE SEALANT AT ALL INSIDE SIDING CORNERS. REFER TO DETAILS 10 & 11 ON SHEET A7.31 FOR CORNER DETAILS.	13. LAP SIDING SHALL BE LAPPED A MINIMUM OF 1 1/2 INCHES AND SHALL HAVE THE ENDS SEALED WITH CAULKING. COVERED WITH A H-SECTION JOINT COVER OR LOCATED OVER A STRIP OF FLASHING.
3. ALL PENETRATIONS MUST BE PROPERLY FLASHED AND/OR SEALED. ATTACHMENTS THROUGH EXTERIOR SKIN SHALL BE SET IN BED OF SEALANT.	8. PROVIDE SILICONE SEALANT W/ BOND BREAKER (TO PREVENT 3-SIDED ADHESION) AT TOP OF HORIZ. BUILDING BANDS.	14. REFER TO SHEET A7.03 FOR BUILDING WRAP INSTALLATION PRACTICES AT DOORS AND WINDOWS.
4. ALL BUILDING MOUNTED EQUIPMENT, PANELS, ETC. SHALL BE MOUNTED AFTER EXT. FINISH IS APPLIED AND PAINTED. IF SEQUENCING OF CONSTRUCTION REQUIRES MOUNTING PRIOR TO THIS, CONTRACTOR SHALL SUBMIT METHOD OF MOUNTING AND WATERPROOFING TO ARCHITECT FOR APPROVAL.	9. PROVIDE SEALANT JOINTS AT INTERFACE BETWEEN DISSIMILAR SUBSTRATES, SUCH AS BREEZEWAY CEILING, BREEZEWAY EXTERIOR EDGES, EXTERIOR WALL TO SKYRIE AND CEILING CONDITIONS ETC.	15. PROVIDE SUFFICIENT BLOCKING AT ALL CANOPY, AWNINGS AND BRACKET ATTACHMENTS. CONFIRM WITH SHOP DRAWINGS OF ELEMENTS.
5. ALL EXTERIOR RAILS TO BE STEEL.	10. PROVIDE POSITIVE SLOPE 1:2 AT TOP OF HORIZONTAL PROJECTIONS, TYPICAL.	16. CONTRACTOR TO COORDINATE MATERIAL AND PRODUCT CONFLICTS PRIOR TO INSTALLATION.
	11. ALL ATTACHMENT AND PENETRATION THRU THE EXTERIOR CLADDING SYSTEM MUST BE SEALED AGAINST POTENTIAL WATER INTRUSION. REFER TO 1/A7.51 AND 15/A7.51.	



RECEIVED
SEP 13 2019
PLANNING &
DESIGN SERVICES

date: 09-16-19
job no: 4204.19
drawn by: CBA
reviewed by: CBA
file: 4204A214
issue history:

LOUISVILLE APARTMENTS
LOUISVILLE, KENTUCKY

LIV DEVELOPMENT
2204 LAKESHORE DRIVE, SUITE 450
BIRMINGHAM, AL 35209
PH. 205-484-2849

c b a
charlan • brock
associates
architects • planners
1770 fennell street
maitland florida 32751-7208
407 660 8900 f: 407 875 9948
www. cbaarchitects . com

BUILDING TYPE I
POOL COURTYARD
ELEVATIONS



2 BUILDING TYPE II - SIDE ELEVATION

SCALE: 3/32"=1'-0"



1 BUILDING TYPE II - FRONT ELEVATION

SCALE: 3/32"=1'-0"

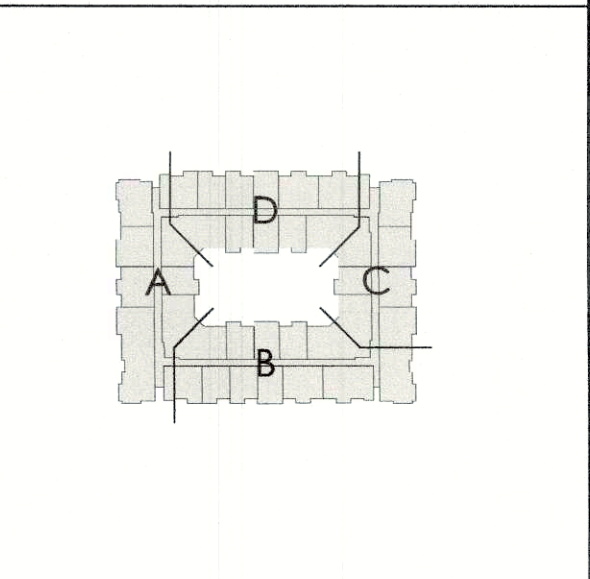
ELEVATION KEYED NOTES

- 1 ARCHITECTURAL GRADE ASPHALT SHINGLES ON #30 FEET OVER ROOF SHEATHING ON PRE-ENGINEERED WOOD TRUSSES ANCHORED @ EA. END.
- 2 FIBER CEMENT LAP SIDING WITH 6\"/>

TYPICAL ELEVATION NOTES

- 1. TYPICAL EXTERIOR CLADDING - FIBER REINFORCED CEMENTitious SIDING ON EXTERIOR SHEATHING WITH INTEGRATED WEATHER BARRIER. TAPE ALL CORNERS IN STRICT ACCORDANCE WITH MANUFACTURER'S RECOMMENDATIONS. SEE SHEET A7.81 FOR MORE INFORMATION.
- 2. ALL EXTERIOR DOOR TRIM TO BE FIBER REINFORCED CEMENTitious BOARD. REFER TO ELEVATIONS AND DETAILS FOR SIZES. ALL EXTERIOR WINDOW TRIM TO BE FOAM LTD SYSTEM.
- 3. ALL PENETRATIONS MUST BE PROPERLY FLASHED AND/OR SEALED. ATTACHMENTS THROUGH EXTERIOR SKIN SHALL BE SET IN BED OF SEALANT.
- 4. ALL BUILDING MOUNTED EQUIPMENT, PANELS, ETC. SHALL BE MOUNTED AFTER EXT. FINISH IS APPLIED AND PAINTED. IF SEQUENCING OF CONSTRUCTION REQUIRES MOUNTING PRIOR TO THIS, CONTRACTOR SHALL SUBMIT METHOD OF MOUNTING AND WATERPROOFING TO ARCHITECT FOR APPROVAL.
- 5. ALL EXTERIOR RAILS TO BE STEEL.
- 6. ALL FINISH GRADE SHALL BE MINIMUM 8\"/>

BUILDING II - KEY PLAN



RECEIVED
SEP 13 2019
PLANNING &
DESIGN SERVICES

date: 09-16-19
job no: 4204.19
drawn by: CBA
reviewed by: CBA
file: 4204A221
issue history:

LOUISVILLE APARTMENTS
LOUISVILLE, KENTUCKY
LIV DEVELOPMENT
2204 LAKESHORE DRIVE, SUITE 450
BIRMINGHAM, AL 35209
PH. 205-484-2849

c b a
charlan • brock
associates
architects • planners
1770 fennell street
maitland florida 32751-7208
407 660 8900 f; 407 875 9948
www.cbaarchitects.com

BUILDING TYPE II
FRONT AND SIDE
ELEVATIONS

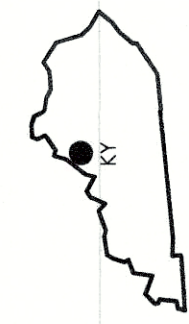
A2.21

JEFFERSON COUNTY, KY

100% SCHEMATIC DESIGN (NOT FOR CONSTRUCTION)

charlan, brock & associates, inc. hereby reserves its common law copyright and other property rights in these plans, ideas, and designs. these ideas, designs, and plans are not to be reproduced, changed or copied in any form or manner whatsoever, nor are they to be assigned to any third party, without first obtaining the express written permission from c.b.a., inc. written dimensions shall have precedence over scale dimensions.

19-CAT3-0017



- 42'-6 3/4"
TRUSS BRG
8'-0"
HEAD HT
- 33'-5 5/8"
T.O. PLYWD
31'-8 7/8"
TRUSS BRG
8'-0"
HEAD HT
- 22'-7 3/4"
T.O. PLYWD
22'-11"
TRUSS BRG
8'-0"
HEAD HT
- 11'-9 7/8"
T.O. PLYWD
10'-1 1/8"
TRUSS BRG
8'-0"
HEAD HT
- 0'-0"
T.O. SLAB
0'-8"
ASSUMED GRADE

1 BUILDING TYPE II - REAR ELEVATION

SCALE: 3/32"=1'-0"

**LOUISVILLE APARTMENTS
LOUISVILLE, KENTUCKY**

LIV DEVELOPMENT
2204 LAKESHORE DRIVE, SUITE 450
BIRMINGHAM, AL 35209
PH. 205-484-2849



1770 fennell street
maitland florida 32751-7208
407 660 8900 f: 407 875 9948
www.cbarchitects.com

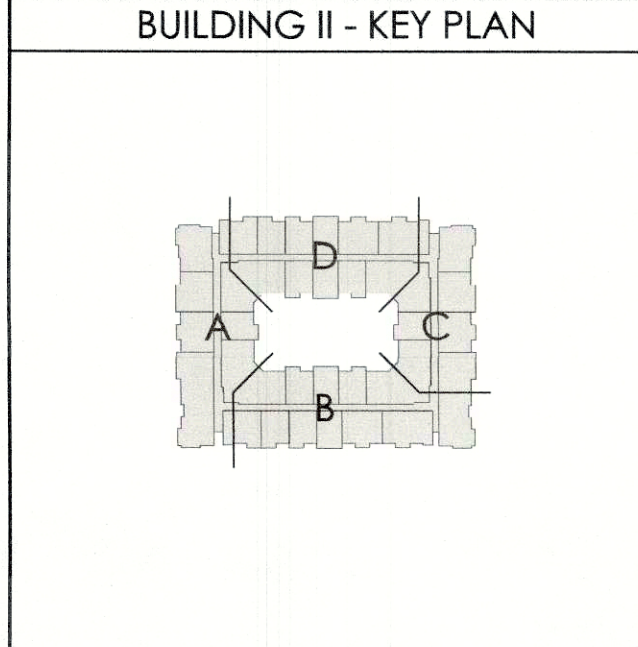
**BUILDING TYPE II
REAR
ELEVATION**

RECEIVED
SEP 13 2019
PLANNING &
DESIGN SERVICES

date: 09-16-19
job no: 4204.19
drawn by: CBA
reviewed by: CBA
file: 4204A222
issue history:

- ELEVATION KEYED NOTES**
- 1 ARCHITECTURAL GRADE ASPHALT SHINGLES ON #30 FELT COVER ROOF SHEATHING ON PRE-ENGINEERED WOOD TRUSSES ANCHORED @ EA. END.
 - 2 FIBER CEMENT LAP SIDING WITH 6" REVEAL OVER BUILDING WRAP OVER EXTERIOR WALL PER MANUFACTURER'S RECOMMENDATIONS.
 - 3 FIBER CEMENT LAP SIDING WITH 10" REVEAL OVER BUILDING WRAP OVER EXTERIOR WALL PER MANUFACTURER'S RECOMMENDATIONS.
 - 4 ARTISAN FIBER CEMENT LAP SIDING WITH 10" REVEAL OVER EXTERIOR WALL PER MANUFACTURER'S SPECIFICATIONS.
 - 5 BRICK VENEER WITH 1" AIR SPACE ON BUILDING WRAP ON SHEATHING ON 2X WOOD STUD WALL SYSTEM.
 - 6 STOREFRONT GLAZING SYSTEM. SEE FLOOR PLANS AND SCHEDULES.
 - 7 WHITE VINYL WINDOW. SEE FLOOR PLANS AND DOOR SCHEDULE.
 - 8 GARAGE DOOR. SEE FLOOR PLANS AND DOOR SCHEDULE.
 - 9 3/4" TRIM ON FIBER CEMENT PANEL SIDING OVER BUILDING WRAP OVER EXTERIOR WALL PER MANUFACTURER'S SPECIFICATIONS.
 - 10 ALUMINUM AWNING.
 - 11 ARCHITECTURAL GRADE DOWNSPOUT AND GUTTER SYSTEM. COLOR TO MATCH ROOF.
 - 12 CONDUCTOR HEAD WITH ARCHITECTURAL GRADE DOWNSPOUT.
 - 13 4" X 8" OVERFLOW SCUPPER.
 - 14 BALCONY COLUMNS - FIBER CEMENT PANELS WITH CASING AT INTERSECTIONS. SEE DETAIL 13/A7.42 (TYPICAL).
 - 15 WINDOW TRIM AT SIDING TO HAVE 6" HEAD AND 2" STOOD, 6" JAMBS AND 3/4" SILL.
 - 16 MECHANICAL VENT. PAINTED TO MATCH ADJACENT WALL COLOR.
 - 17 BOARD AND BATTEN FIBER CEMENT.
 - 18 METAL GATE. REFER TO PLANS AND DOOR SCHEDULE.
 - 19 DECORATIVE METAL GRILL.
 - 20 FIBER CEMENT PANEL OVER BUILDING WRAP OVER EXTERIOR WALL PER MANUFACTURER'S SPECIFICATIONS.
 - 21 LIGHT FIXTURE - REFER TO ELECTRICAL DRAWINGS FOR MODEL & MANUFACTURER.
 - 22 42" HIGH ALUMINUM GUARD RAIL SYSTEM.
 - 23 EXTERIOR DOOR SYSTEM. SEE PLANS AND DOOR SCHEDULE.
 - 24 OPEN BEYOND.
 - 25 STANDING METAL SEAM ROOF.
 - 26 DECORATIVE SHUTTERS.

- TYPICAL ELEVATION NOTES**
1. TYPICAL EXTERIOR CLADDING - FIBER REINFORCED CEMENTITIOUS SIDING ON EXTERIOR SHEATHING WITH INTEGRATED WEATHER BARRIER. TAPE ALL CORNERS IN STRICT ACCORDANCE WITH MANUFACTURER'S RECOMMENDATIONS. SEE SHEET A7.81 FOR MORE INFORMATION.
 2. ALL EXTERIOR DOOR TRIM TO BE FIBER REINFORCED CEMENTITIOUS BOARD. REFER TO ELEVATIONS AND DETAILS FOR SIZES. ALL EXTERIOR WINDOW TRIM TO BE FOAM LITE SYSTEM.
 3. ALL PENETRATIONS MUST BE PROPERLY FLASHED AND/OR SEALED. ATTACHMENTS THROUGH EXTERIOR SKIN SHALL BE SET IN BED OF SEALANT.
 4. ALL BUILDING MOUNTED EQUIPMENT, PANELS, ETC. SHALL BE MOUNTED AFTER EXT. FINISH IS APPLIED AND PAINTED. IF SEQUENCING OF CONSTRUCTION REQUIRES MOUNTING PRIOR TO THIS, CONTRACTOR SHALL SUBMIT METHOD OF MOUNTING AND WATERPROOFING TO ARCHITECT FOR APPROVAL.
 5. ALL EXTERIOR RAILS TO BE STEEL.
 6. ALL FINISH GRADE SHALL BE MINIMUM 8" BELOW FINISH FLOOR AND SLOPE AWAY FROM BUILDING AT MIN 2% RATE.
 7. PROVIDE SILICONE SEALANT AT ALL INSIDE SIDING CORNERS. REFER TO DETAILS 10 & 11 ON SHEET A7.31 FOR CORNER DETAILS.
 8. PROVIDE SILICONE SEALANT W/ BOND BREAKER (TO PREVENT 3-SIDED ADHESION) AT TOP OF FORM BUILDING BANDS.
 9. PROVIDE SEALANT JOINTS AT INTERFACE BETWEEN DISSIMILAR SUBSTRATES, SUCH AS BREEZEWAY CEILINGS, BREEZEWAY EXTERIOR EDGES, EXTERIOR WALL TO SOFFIT AND CEILING CONDITIONS ETC.
 10. PROVIDE POSITIVE SLOPE 1/2" AT TOP OF HORIZONTAL PROJECTIONS, TYPICAL.
 11. ALL ATTACHMENT AND PENETRATION THRU THE EXTERIOR CLADDING SYSTEM MUST BE SEALED AGAINST POTENTIAL WATER INTRUSION. REFER TO 11/A7.42 FOR DETAIL LOCATIONS.
 12. EXTERIOR WALLS TO BE COATED WITH PAINT COATING PRIOR TO INSTALLATION OF THE DOWNSPOUTS, TYP.
 13. LAP SIDING SHALL BE LAPPED A MINIMUM OF 1 1/2" INCHES AND SHALL HAVE THE ENDS SEALED WITH CAULKING. COVERED WITH A H-SECTION JOINT COVER OR LOCATED OVER A STRIP OF FLASHING.
 14. REFER TO SHEET A7.03 FOR BUILDING WRAP INSTALLATION PRACTICES AT DOORS AND WINDOWS.
 15. PROVIDE SUFFICIENT BLOCKING AT ALL CANOPY, AWNINGS AND BRACKET ATTACHMENTS. CONFIRM WITH SHOP DRAWINGS OF ELEMENTS.
 16. CONTRACTOR TO COORDINATE MATERIAL AND PRODUCT CONFLICTS PRIOR TO INSTALLATION.

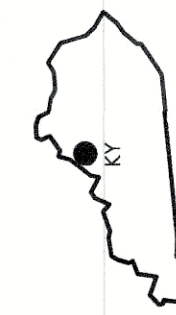


180% SUBMITTAL DESIGN (NOT FOR CONSTRUCTION)

A2.22

19-CAT3-0019

charlan brock & associates, inc. hereby reserves its common law copyright and other proprietary rights in these plans, ideas, and designs. these ideas, designs, and plans are not to be reproduced, changed or copied in any form or manner whatsoever, nor are they to be assigned to any third party, without first obtaining the express written permission from c.b.a., inc. written dimensions shall have precedence over scale dimensions.



3 BUILDING TYPE FIVE - REAR ELEVATION
SCALE: 1/8"=1'-0"



4 BUILDING TYPE FIVE - RIGHT ELEVATION
SCALE: 1/8"=1'-0"



2 BUILDING TYPE FIVE - LEFT ELEVATION
SCALE: 1/8"=1'-0"



1 BUILDING TYPE FIVE - FRONT ELEVATION
SCALE: 1/8"=1'-0"

LOUISVILLE APARTMENTS
LOUISVILLE, KENTUCKY

LIV DEVELOPMENT
2204 LAKESHORE DRIVE, SUITE 450
BIRMINGHAM, AL 35209
PH. 205-484-2849



1770 fennell street
maitland florida 32751-7208
407 660 8900 f: 407 875 9948
www.cbaarchitects.com

BUILDING TYPE III
EXTERIOR ELEVATIONS

RECEIVED
SEP 13 2019
PLANNING &
DESIGN SERVICES

date: 09-16-19
job no: 4204.19
drawn by: AJF
reviewed by: CBA
file: 4204A231
issue history:

ELEVATION KEYED NOTES

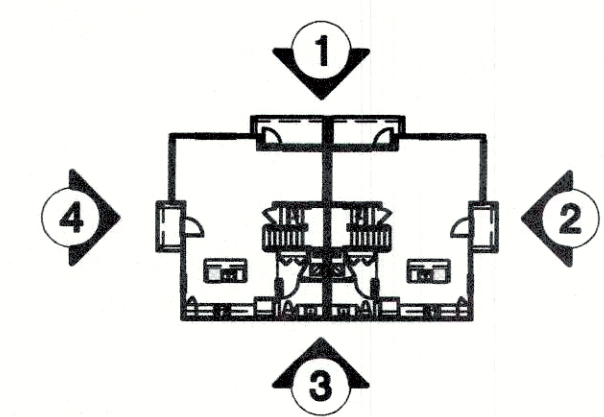
- | | | |
|---|---|---|
| 1 ARCHITECTURAL GRADE ASPHALT SHINGLES ON #30 FELT OVER ROOF SHEATHING ON PRE-ENGINEERED WOOD TRUSSES ANCHORED @ EA. END. | 9 3/4" TRIM ON FIBER CEMENT PANEL SIDING OVER BUILDING WRAP OVER EXTERIOR WALL PER MANUFACTURER'S SPECIFICATIONS. | 19 DECORATIVE METAL. GRILL |
| 2 FIBER CEMENT LAP SIDING WITH 4" REVEAL OVER BUILDING WRAP OVER EXTERIOR WALL PER MANUFACTURER'S RECOMMENDATIONS. | 10 ALUMINUM AWNING | 20 FIBER CEMENT PANEL OVER BUILDING WRAP OVER EXTERIOR WALL PER MANUFACTURER'S SPECIFICATIONS |
| 3 FIBER CEMENT LAP SIDING WITH 10" REVEAL OVER BUILDING WRAP OVER EXTERIOR WALL PER MANUFACTURER'S RECOMMENDATIONS. | 11 ARCHITECTURAL GRADE DOWNSPOUT AND GUTTER SYSTEM. COLOR TO MATCH ROOF. CONDUCTOR HEAD WITH ARCHITECTURAL GRADE DOWNSPOUT. | 21 LIGHT FIXTURE - REFER TO ELECTRICAL DRAWINGS FOR MODEL & MANUFACTURER |
| 4 ARTISAN FIBER CEMENT LAP SIDING WITH 10" REVEAL OVER EXTERIOR WALL PER MANUFACTURER'S SPECIFICATIONS. | 12 4" X 8" OVERFLOW SCUPPER. | 22 42" HIGH ALUMINUM GUARD RAIL SYSTEM |
| 5 BRICK VENEER WITH 1" AIR SPACE ON BUILDING WRAP ON SHEATHING ON 2X WOOD STUD WALL SYSTEM. | 13 BALCONY COLUMNS - FIBER CEMENT PANELS WITH CASING AT INTERSECTIONS. SEE DETAIL 2/A7.42 (TYPICAL). | 23 EXTERIOR DOOR SYSTEM. SEE PLANS AND DOOR SCHEDULE. |
| 6 STOREFRONT GLAZING SYSTEM. SEE FLOOR PLANS AND SCHEDULES | 14 WINDOW TRIM AT SIDING TO HAVE 6" HEAD AND STOOL, 6" JAMBS AND 3/4" SILL. | 24 OPEN BEYOND |
| 7 WHITE VINYL WINDOW. SEE FLOOR PLANS AND DOOR SCHEDULE | 15 MECHANICAL VENT. PAINTED TO MATCH ADJACENT WALL COLOR | 25 STANDING METAL SEAM ROOF |
| 8 GARAGE DOOR. SEE FLOOR PLANS AND DOOR SCHEDULE | 16 BOARD AND BATTEN FIBER CEMENT | 26 DECORATIVE SHUTTERS |
| | 17 METAL GATE. REFER TO PLANS AND DOOR SCHEDULE | |

TYPICAL ELEVATION NOTES

- TYPICAL EXTERIOR CLADDING - FIBER REINFORCED CEMENTITIOUS SIDING ON EXTERIOR SHEATHING WITH INTEGRATED WEATHER BARRIER. TAPE ALL CORNERS IN STRICT ACCORDANCE WITH MANUFACTURER'S RECOMMENDATIONS. SEE SHEET A7.81 FOR MORE INFORMATION.
- ALL EXTERIOR DOOR TRIM TO BE FIBER REINFORCED CEMENTITIOUS BOARD. REFER TO ELEVATIONS AND DETAILS FOR SIZES. ALL EXTERIOR WINDOW TRIM TO BE FOAM LTD SYSTEM.
- ALL PENETRATIONS MUST BE PROPERLY FLASHED AND/OR SEALED. ATTACHMENTS THROUGH EXTERIOR SKIN SHALL BE SET IN BED OF SEALANT.
- ALL BUILDING MOUNTED EQUIPMENT, PANELS, ETC. SHALL BE MOUNTED AFTER EXT. FINISH IS APPLIED AND PAINTED. IF SEQUENCING OF CONSTRUCTION REQUIRES MOUNTING PRIOR TO THIS, CONTRACTOR SHALL SUBMIT METHOD OF MOUNTING AND WATERPROOFING TO ARCHITECT FOR APPROVAL.
- ALL EXTERIOR RAILS TO BE STEEL.
- ALL FINISH GRADE SHALL BE MINIMUM 8" BELOW FINISH FLOOR AND SLOPE AWAY FROM BUILDING AT MIN 2% RATE.
- PROVIDE SILICONE SEALANT AT ALL INSIDE SIDING CORNERS. REFER TO DETAILS 10 & 11 ON SHEET A7.31 FOR CORNER DETAILS.
- PROVIDE SILICONE SEALANT W/ BOND BREAKER (TO PREVENT 3-SIDED ADHESION) AT TOP OF HORIZ. BUILDING BANDS.
- PROVIDE SEALANT JOINTS AT INTERFACE BETWEEN DISSIMILAR SUBSTRATES. SUCH AS BREEZEWAY, CEILINGS, BREEZEWAY EXTERIOR EDGES, EXTERIOR WALL TO SOFFIT AND CEILING CONDITIONS ETC.
- PROVIDE POSITIVE SLOPE 1:2 AT TOP OF HORIZONTAL PROJECTIONS, TYPICAL.
- ALL ATTACHMENT AND PENETRATION THRU THE EXTERIOR CLADDING SYSTEM MUST BE SEALED AGAINST POTENTIAL WATER INTRUSION. REFER TO 1/A7.42 FOR DETAIL LOCATIONS.
- EXTERIOR WALLS TO BE COATED WITH PAINT COATING PRIOR TO INSTALLATION OF THE DOWNSPOUTS, TYP.
- LAP SIDING SHALL BE LAPPED A MINIMUM OF 1 1/2 INCHES AND SHALL HAVE THE ENDS SEALED WITH CAULKING. COVERED WITH A H-SECTION JOINT COVER OR LOCATED OVER A STRIP OF FLASHING.
- REFER TO SHEET A7.03 FOR BUILDING WRAP INSTALLATION PRACTICES AT DOORS AND WINDOWS.
- PROVIDE SUFFICIENT BLOCKING AT ALL CANOPY, AWNINGS AND BRACKET ATTACHMENTS. CONFIRM WITH SHOP DRAWINGS OF ELEMENTS.
- CONTRACTOR TO COORDINATE MATERIAL AND PRODUCT CONFLICTS PRIOR TO INSTALLATION.

INDICATES GUTTER AND DOWNSPOUT LOCATION. SEE DETAIL 7/A7.51, 8/A7.51, 14/A7.51 and 15/A7.51

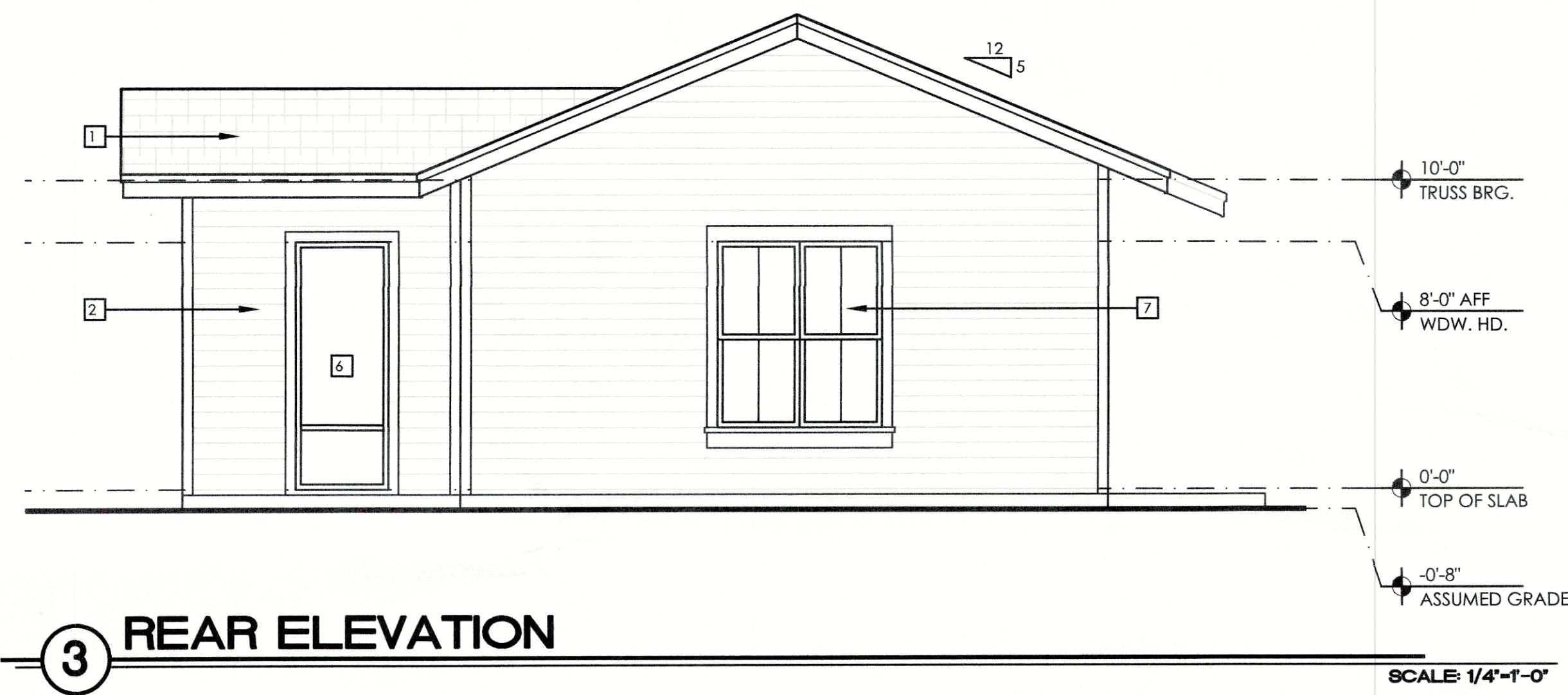
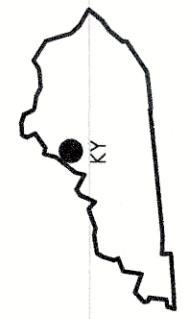
BUILDING III - KEY PLAN



100% SCHEDULED FOR CONSTRUCTION

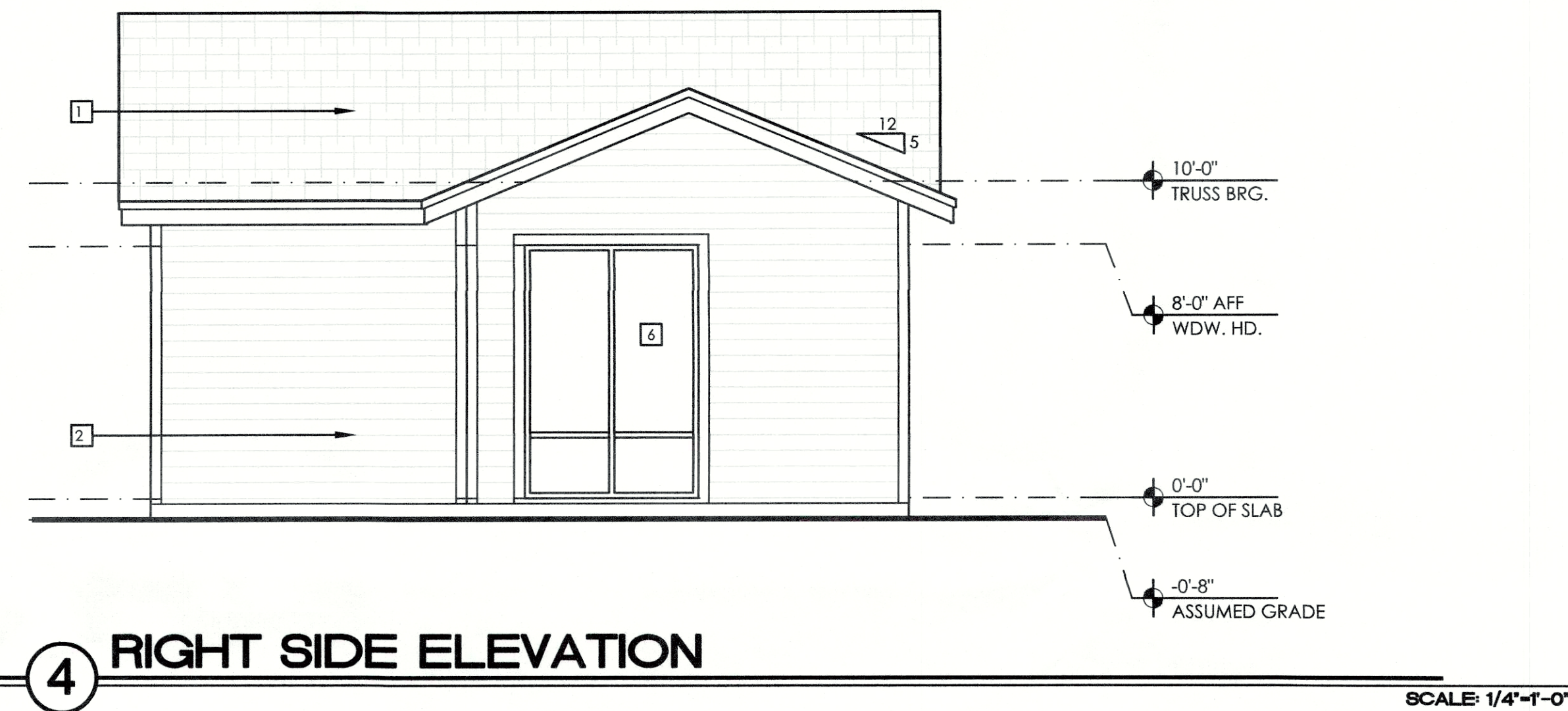
A2.31

19-CAT3-007



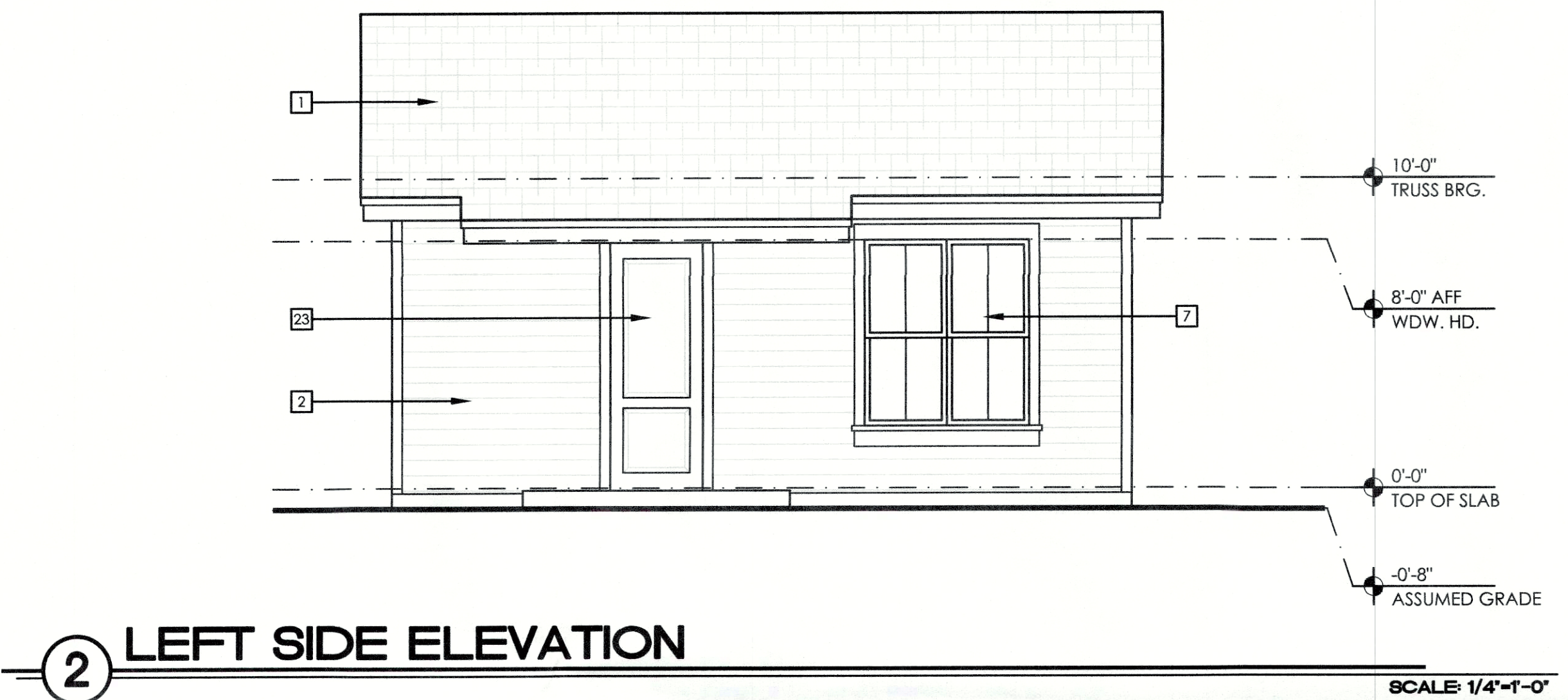
3 REAR ELEVATION

SCALE: 1/4"=1'-0"



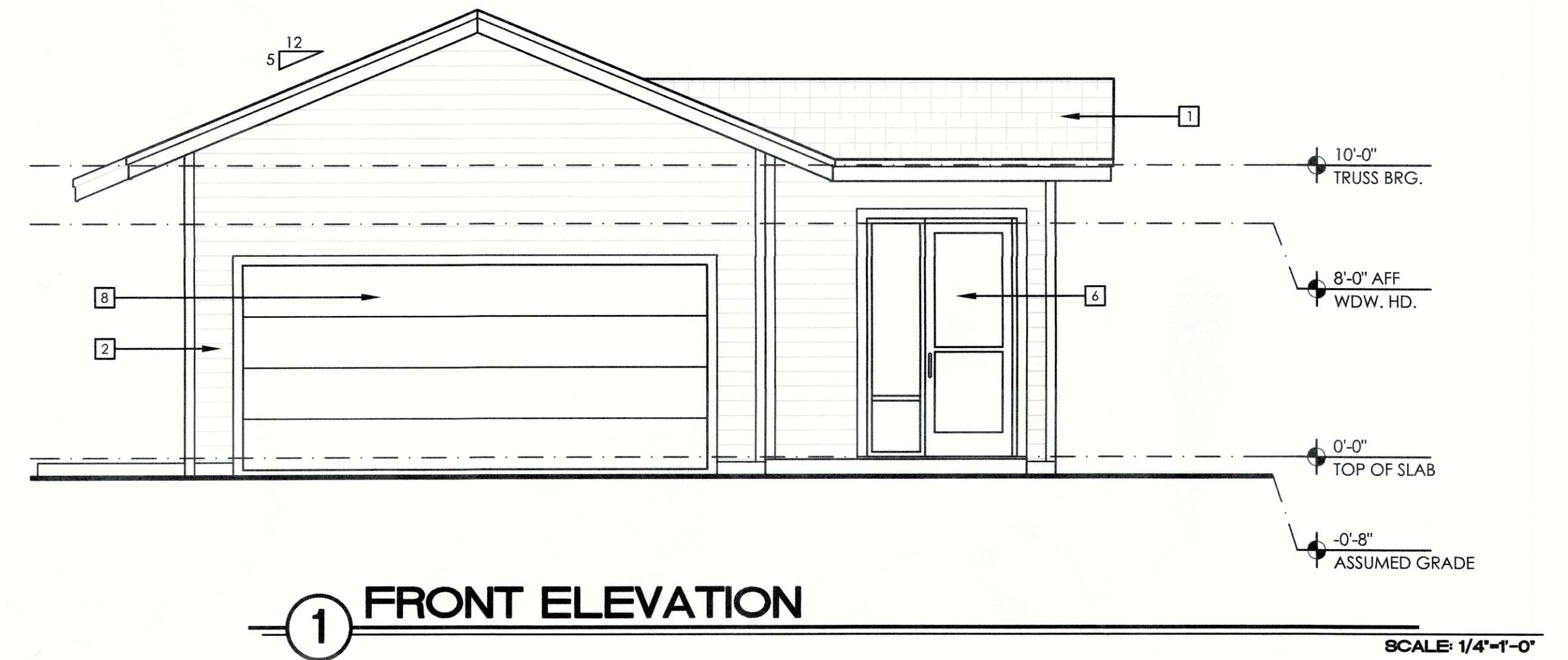
4 RIGHT SIDE ELEVATION

SCALE: 1/4"=1'-0"



2 LEFT SIDE ELEVATION

SCALE: 1/4"=1'-0"



1 FRONT ELEVATION

SCALE: 1/4"=1'-0"

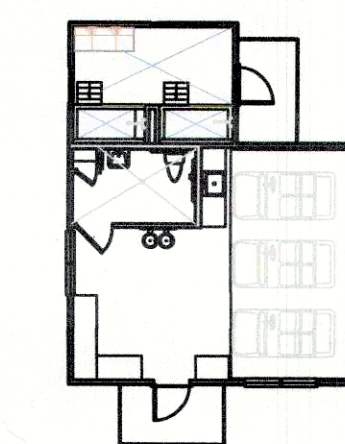
ELEVATION KEYED NOTES

- | | | |
|--|--|---|
| <p>1 ARCHITECTURAL GRADE ASPHALT SHINGLES ON #30 FELT OVER ROOF SHEATHING ON PRE-ENGINEERED WOOD TRUSSES ANCHORED @ EA. END.</p> <p>2 FIBER CEMENT LAP SIDING WITH 6" REVEAL OVER BUILDING WRAP OVER EXTERIOR WALL PER MANUFACTURER'S RECOMMENDATIONS.</p> <p>3 FIBER CEMENT LAP SIDING WITH 10" REVEAL OVER BUILDING WRAP OVER EXTERIOR WALL PER MANUFACTURER'S RECOMMENDATIONS.</p> <p>4 ARTISAN FIBER CEMENT LAP SIDING WITH 10" REVEAL OVER EXTERIOR WALL PER MANUFACTURER'S SPECIFICATIONS.</p> <p>5 BRICK VENEER WITH 1" AIR SPACE ON BUILDING WRAP ON SHEATHING ON 2X WOOD STUD WALL SYSTEM.</p> <p>6 STOREFRONT GLAZING SYSTEM. SEE FLOOR PLANS AND SCHEDULES</p> <p>7 WHITE VINYL WINDOW. SEE FLOOR PLANS AND DOOR SCHEDULE</p> <p>8 GARAGE DOOR. SEE FLOOR PLANS AND DOOR SCHEDULE</p> | <p>9 3/4" TRIM ON FIBER CEMENT PANEL SIDING OVER BUILDING WRAP OVER EXTERIOR WALL PER MANUFACTURER'S SPECIFICATIONS.</p> <p>10 ALUMINUM AWNING</p> <p>11 ARCHITECTURAL GRADE DOWNSPOUT AND GUTTER SYSTEM. COLOR TO MATCH ROOF.</p> <p>12 CONDUCTOR HEAD WITH ARCHITECTURAL GRADE DOWNSPOUT.</p> <p>13 4" X 8" OVERFLOW SCUPPER.</p> <p>14 BALCONY COLUMNS - FIBER CEMENT PANELS WITH CASING AT INTERSECTIONS. SEE DETAIL 2/A7.42 (TYPICAL).</p> <p>15 WINDOW TRIM AT SIDING TO HAVE 6" HEAD AND STOOL, 6" JAMBS AND 3/4" SILL</p> <p>16 MECHANICAL VENT. PAINTED TO MATCH ADJACENT WALL COLOR</p> <p>17 BOARD AND BATTEN FIBER CEMENT</p> <p>18 METAL GATE. REFER TO PLANS AND DOOR SCHEDULE</p> | <p>19 DECORATIVE METAL GRILL</p> <p>20 FIBER CEMENT PANEL OVER BUILDING WRAP OVER EXTERIOR WALL PER MANUFACTURER'S SPECIFICATIONS</p> <p>21 LIGHT FIXTURE - REFER TO ELECTRICAL DRAWINGS FOR MODEL & MANUFACTURER</p> <p>22 42" HIGH ALUMINUM GUARD RAIL SYSTEM</p> <p>23 EXTERIOR DOOR SYSTEM. SEE PLANS AND DOOR SCHEDULE.</p> <p>24 OPEN BEYOND</p> <p>25 STANDING METAL SEAM ROOF</p> <p>26 DECORATIVE SHUTTERS</p> |
|--|--|---|

TYPICAL ELEVATION NOTES

- | | | |
|---|---|--|
| <p>1. TYPICAL EXTERIOR CLADDING - FIBER REINFORCED CEMENTITIOUS SIDING ON EXTERIOR SHEATHING WITH INTEGRATED WEATHER BARRIER. TAPE ALL CORNERS IN STRICT ACCORDANCE WITH MANUFACTURER'S RECOMMENDATIONS. SEE SHEET A7.81 FOR MORE INFORMATION.</p> <p>2. ALL EXTERIOR DOOR TRIM TO BE FIBER REINFORCED CEMENTITIOUS BOARD. REFER TO ELEVATIONS AND DETAILS FOR SIZES. ALL EXTERIOR WINDOW TRIM TO BE FOAM LTD SYSTEM.</p> <p>3. ALL PENETRATIONS MUST BE PROPERLY FLASHED AND/OR SEALED. ATTACHMENTS THROUGH EXTERIOR SKIN SHALL BE SET IN BED OF SEALANT.</p> <p>4. ALL BUILDING MOUNTED EQUIPMENT, PANELS, ETC. SHALL BE MOUNTED AFTER EXT. FINISH IS APPLIED AND PAINTED. IF SEQUENCING OF CONSTRUCTION REQUIRES MOUNTING PRIOR TO THIS, CONTRACTOR SHALL SUBMIT METHOD OF MOUNTING AND WATERPROOFING TO ARCHITECT FOR APPROVAL.</p> <p>5. ALL EXTERIOR RAILS TO BE STEEL.</p> | <p>6. ALL FINISH GRADE SHALL BE MINIMUM 8" BELOW FINISH FLOOR AND SLOPE AWAY FROM BUILDING AT MIN 2% RATE.</p> <p>7. PROVIDE SILICONE SEALANT AT ALL INSIDE SIDING CORNERS. REFER TO DETAILS 10 & 11 ON SHEET A7.31 FOR CORNER DETAILS.</p> <p>8. PROVIDE SILICONE SEALANT W/ BOND BREAKER (TO PREVENT 3-SIDED ADHESION) AT TOP OF HORIZ. BUILDING BANDS.</p> <p>9. PROVIDE SEALANT JOINTS AT INTERFACE BETWEEN DISSIMILAR SUBSTRATES, SUCH AS BREEZEWAY CEILING, BREEZEWAY EXTERIOR EDGES, EXTERIOR WALL TO SOFFIT AND CEILING CONDITIONS ETC.</p> <p>10. PROVIDE POSITIVE SLOPE 1:2 AT TOP OF HORIZONTAL PROJECTIONS, TYPICAL.</p> <p>11. ALL ATTACHMENT AND PENETRATION THRU THE EXTERIOR CLADDING SYSTEM MUST BE SEALED AGAINST POTENTIAL WATER INTRUSION. REFER TO 1/A7.42 FOR DETAIL LOCATIONS.</p> | <p>12. EXTERIOR WALLS TO BE COATED WITH PAINT COATING PRIOR TO INSTALLATION OF THE DOWNSPOUTS, TYP.</p> <p>13. LAP SIDING SHALL BE LAPPED A MINIMUM OF 1 1/2" INCHES AND SHALL HAVE THE ENDS SEALED WITH CAULKING. COVERED WITH A H-SECTION JOINT COVER OR LOCATED OVER A STRIP OF FLASHING.</p> <p>14. REFER TO SHEET A7.03 FOR BUILDING WRAP INSTALLATION PRACTICES AT DOORS AND WINDOWS.</p> <p>15. PROVIDE SUFFICIENT BLOCKING AT ALL CANOPY, AWNINGS AND BRACKET ATTACHMENTS. CONFIRM WITH SHOP DRAWINGS OF ELEMENTS.</p> <p>16. CONTRACTOR TO COORDINATE MATERIAL AND PRODUCT CONFLICTS PRIOR TO INSTALLATION.</p> |
|---|---|--|

MAINTENANCE - KEY PLAN



INDICATES GUTTER AND DOWNSPOUT LOCATION. SEE DETAIL 7/A7.51, 8/A7.51, 14/A7.51 and 15/A7.51

RECEIVED
SEP 13 2019
PLANNING & DESIGN SERVICES

MAINTENANCE/
DOG WASH
BUILDING
ELEVATIONS

date: 09-16-19
job no: 4204.19
drawn by: CR
reviewed by: CBA
file: 4204A241
issue history:

100% SCHEMATIC DESIGN (NOT FOR CONSTRUCTION)

A2.41

19-CAT3-007

LOUISVILLE APARTMENTS
LOUISVILLE, KENTUCKY

LIV DEVELOPMENT
2204 LAKESHORE DRIVE, SUITE 450
BIRMINGHAM, AL 35209
PH: 205-484-2849

c b d
charlan • brock
associates

architects • planners

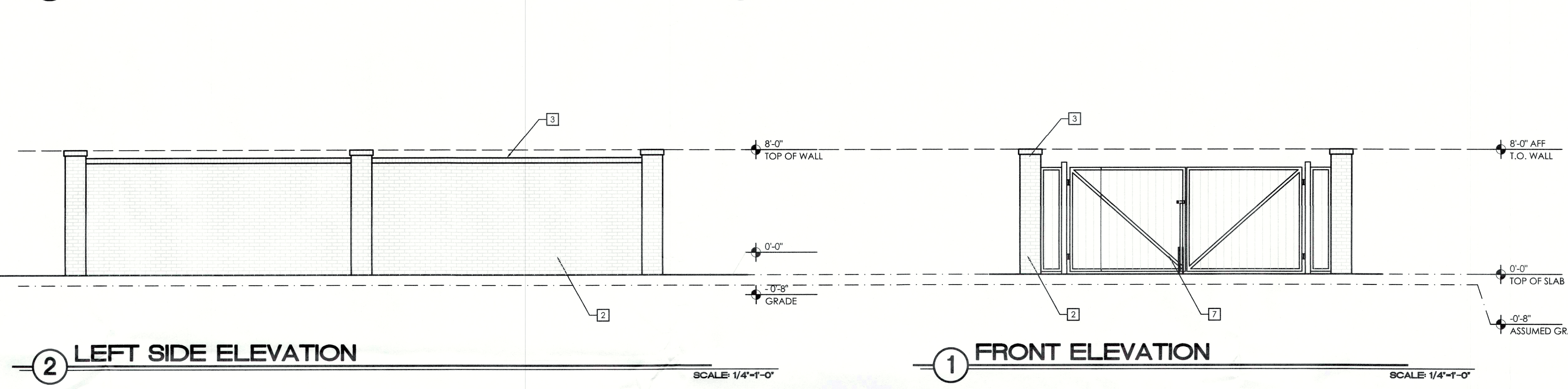
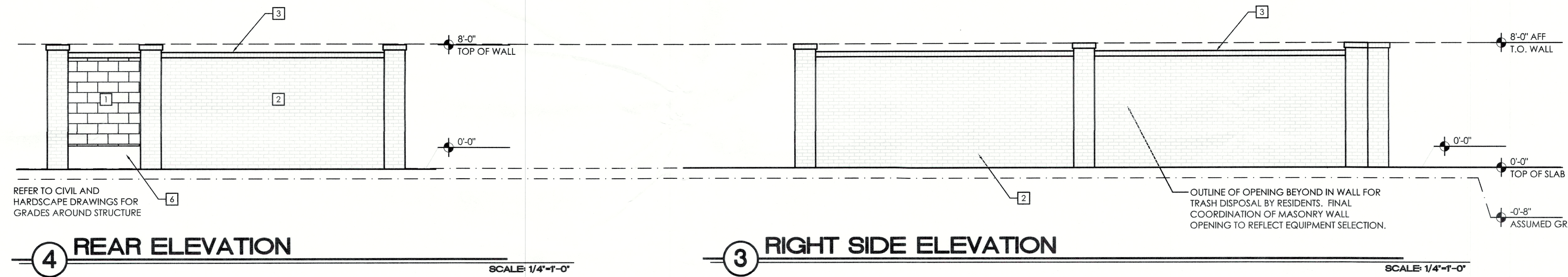
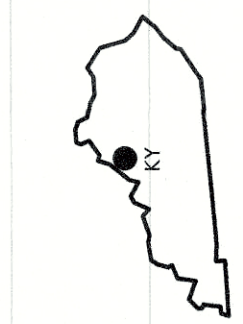
1770 fennell street
maitland florida 32751-7208
407 660 8900 f: 407 875 9948
www.cbaarchitects.com

charlan, brock & associates, inc. hereby reserves its common law copyright and other property rights in these plans, ideas, and designs. these ideas, designs, and plans are not to be reproduced, changed or copied in any form or manner whatsoever, nor are they to be assigned to any third party, without first obtaining the express written permission from c.b.a., inc. within dimensions shall have precedence over scale dimensions.

X:\2019\09\13\19-09-13-001\19-09-13-001.dwg Friday, September 13, 2019 P:\V2014 - LIV CHAMBERLIN LOUISVILLE\A703\DRAWINGS\1 - APARTMENT\100_CURRENT\A204A241

Ximena Carrion Friday, September 13, 2019 P:\2024 - LIV CHAMBERLIN LOUISVILLE APARTMENTS\LOUISVILLE APARTMENTS\APARTMENT\02\CURRENT\2024A251

JEFFERSON COUNTY, KY



4 REAR ELEVATION

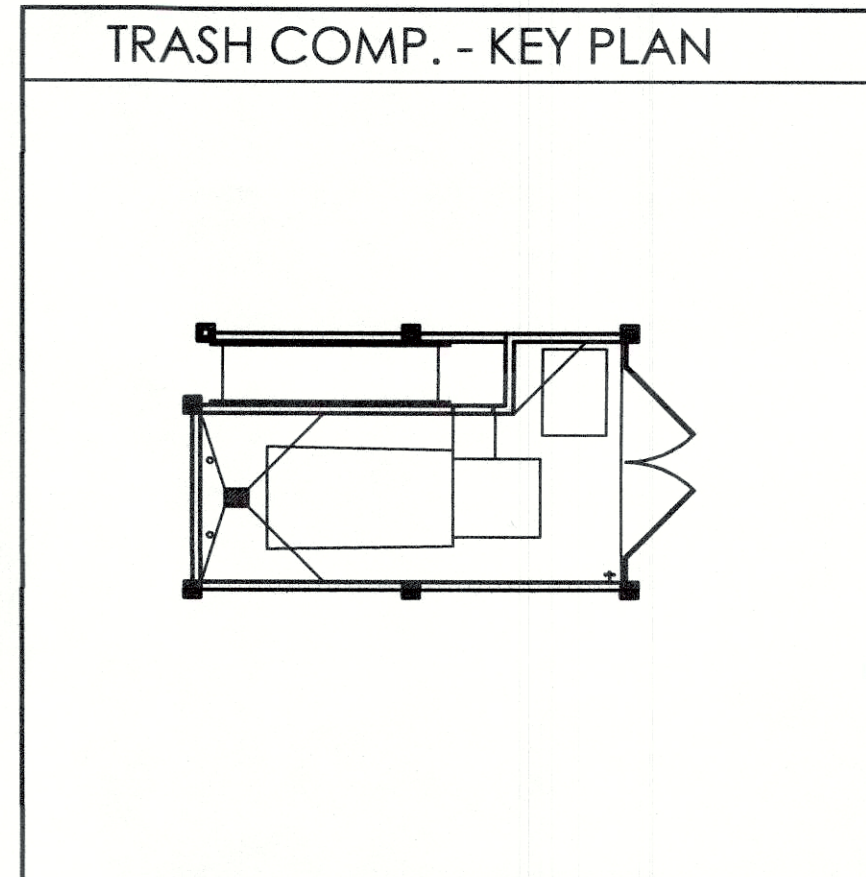
3 RIGHT SIDE ELEVATION

2 LEFT SIDE ELEVATION

1 FRONT ELEVATION

TRASH COMP. - KEY NOTES	
1	PAINTED CMU BLOCK
2	BRICK
3	BRICK CAP SET ON 1/2" CONT. W.P. MEMBRANE
4	FLOOR DRAIN - CONNECT TO SAND/OIL INTERCEPTOR
5	42" HIGH GUARDRAIL W/ HANDRAIL AT 34" ABOVE WALKING SURFACE. EXTEND HANDRAIL 12" BEYOND RAMP LENGTH AT TOP AND BOTTOM OF RAMP.
6	CONCRETE RAMP - SLOPE 1 : 12
7	GATE: REFER TO SHEETS A7.02 & A7.06
8	BOLLARD
9	BRICK CONTROL JOINT

- TYPICAL ELEVATION NOTES**
- TYPICAL EXTERIOR CLADDING - FIBER REINFORCED CEMENTITIOUS SIDING ON EXTERIOR SHEATHING WITH INTEGRATED WEATHER BARRIER. TAPE ALL CORNERS IN STRICT ACCORDANCE WITH MANUFACTURER'S RECOMMENDATIONS. SEE SHEET A7.81 FOR MORE INFORMATION.
 - ALL EXTERIOR DOOR TRIM TO BE FIBER REINFORCED CEMENTITIOUS BOARD. REFER TO ELEVATIONS AND DETAILS FOR SIZES. ALL EXTERIOR WINDOW TRIM TO BE FOAM LTD SYSTEM.
 - ALL PENETRATIONS MUST BE PROPERLY FLASHED AND/OR SEALED. ATTACHMENTS THROUGH EXTERIOR SKIN SHALL BE SET IN BED OF SEALANT.
 - ALL BUILDING MOUNTED EQUIPMENT, PANELS, ETC. SHALL BE MOUNTED AFTER EXT. FINISH IS APPLIED AND PAINTED. IF SEQUENCING OF CONSTRUCTION REQUIRES MOUNTING PRIOR TO THIS, CONTRACTOR SHALL SUBMIT METHOD OF MOUNTING AND WATERPROOFING TO ARCHITECT FOR APPROVAL.
 - ALL EXTERIOR RAILS TO BE STEEL.
 - ALL FINISH GRADE SHALL BE MINIMUM 8" BELOW FINISH FLOOR AND SLOPE AWAY FROM BUILDING AT MIN 2% RATE.
 - PROVIDE SILICONE SEALANT AT ALL INSIDE SIDING CORNERS. REFER TO DETAILS 10 & 11 ON SHEET A7.31 FOR CORNER DETAILS.
 - PROVIDE SILICONE SEALANT W/ BOND BREAKER (TO PREVENT 3-SIDED ADHESION) AT TOP OF HORIZ. BUILDING BANDS.
 - PROVIDE SEALANT JOINTS AT INTERFACE BETWEEN DISSIMILAR SUBSTRATES, SUCH AS BREEZEWAY CEILINGS, BREEZEWAY EXTERIOR EDGES, EXTERIOR WALL TO SOFFIT AND CEILING CONDITIONS ETC.
 - PROVIDE POSITIVE SLOPE 1:2 AT TOP OF HORIZONTAL PROJECTIONS, TYPICAL.
 - ALL ATTACHMENT AND PENETRATION THRU THE EXTERIOR CLADDING SYSTEM MUST BE SEALED AGAINST POTENTIAL WATER INTRUSION. REFER TO 1/A7.42 FOR DETAIL LOCATIONS.
 - EXTERIOR WALLS TO BE COATED WITH PAINT COATING PRIOR TO INSTALLATION OF THE DOWNSPOUTS, TYP.
 - LAP SIDING SHALL BE LAPPED A MINIMUM OF 1 1/2" INCHES AND SHALL HAVE THE ENDS SEALED WITH CAULKING. COVERED WITH A H-SECTION JOINT COVER OR LOCATED OVER A STRIP OF FLASHING.
 - REFER TO SHEET A7.03 FOR BUILDING WRAP INSTALLATION PRACTICES AT DOORS AND WINDOWS.
 - PROVIDE SUFFICIENT BLOCKING AT ALL CANOPY, AWNINGS AND BRACKET ATTACHMENTS. CONFIRM WITH SHOP DRAWINGS OF ELEMENTS.
 - CONTRACTOR TO COORDINATE MATERIAL AND PRODUCT CONFLICTS PRIOR TO INSTALLATION.
- INDICATES GUTTER AND DOWNSPOUT LOCATION. SEE DETAIL 7/A7.51, 8/A7.51, 14/A7.51 and 15/A7.51



RECEIVED
SEP 13 2019
PLANNING & DESIGN SERVICES

date: 09-16-19
job no: 4204.19
drawn by: CR
reviewed by: CBA
file: 4204A251
issue history:

TRASH
COMPACTOR
ELEVATIONS

c b a
charlan • brock
associates
architects • planners
1770 fennell street
maitland florida 32751-7208
407 660 8900 f: 407 875 9948
www.cbaarchitects.com

LOUISVILLE APARTMENTS
LOUISVILLE, KENTUCKY

LIV DEVELOPMENT
2204 LAKESHORE DRIVE, SUITE 450
BIRMINGHAM, AL 35209
PH. 205-484-2849

A2.51

19-CAT3-0017

100% SCHEMATIC DESIGN (NOT FOR CONSTRUCTION) charlan, brock & associates, inc. hereby reserves its common law copyright and other property rights in these plans, ideas, and designs. these ideas, designs, and plans are not to be reproduced, changed or copied in any form or manner whatsoever, nor are they to be assigned to any third party, without first obtaining the express written permission from c.b.a., inc. written dimensions shall have precedence over scale dimensions.