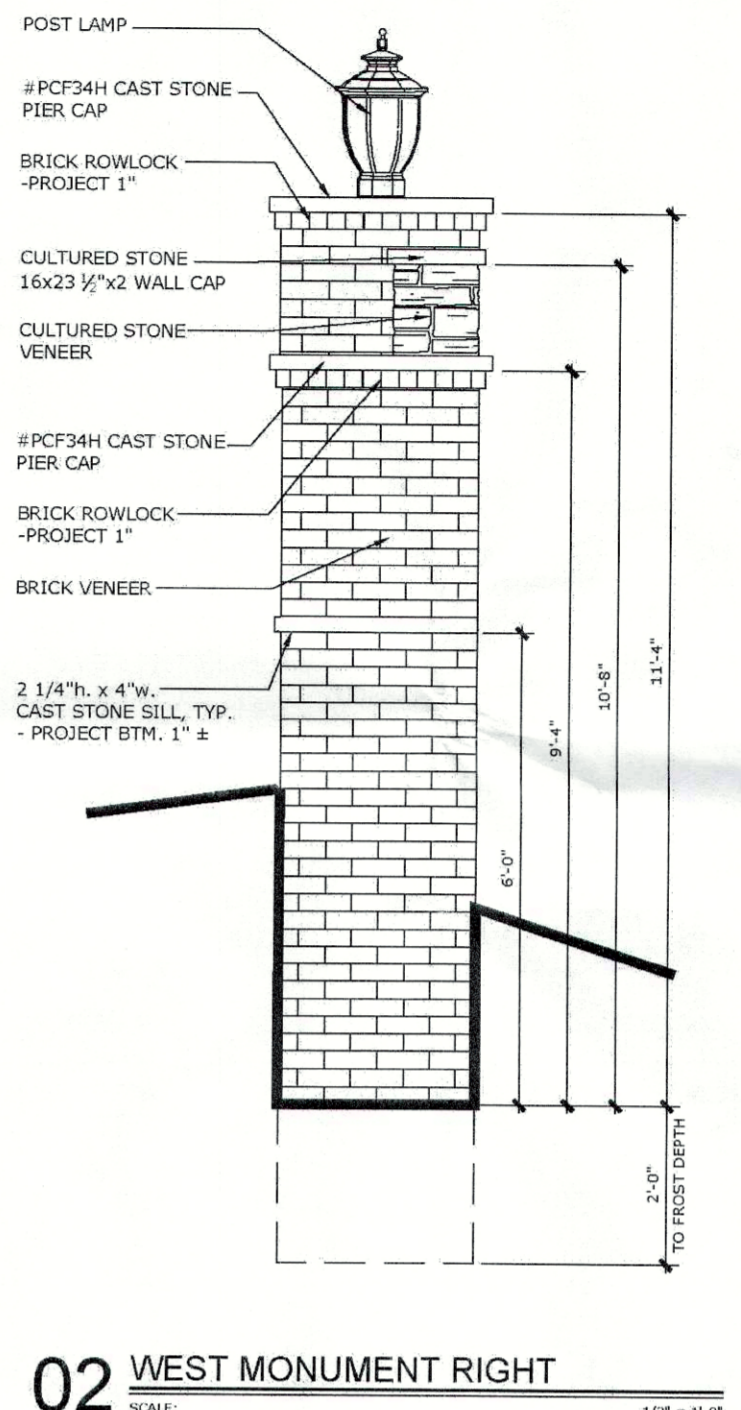
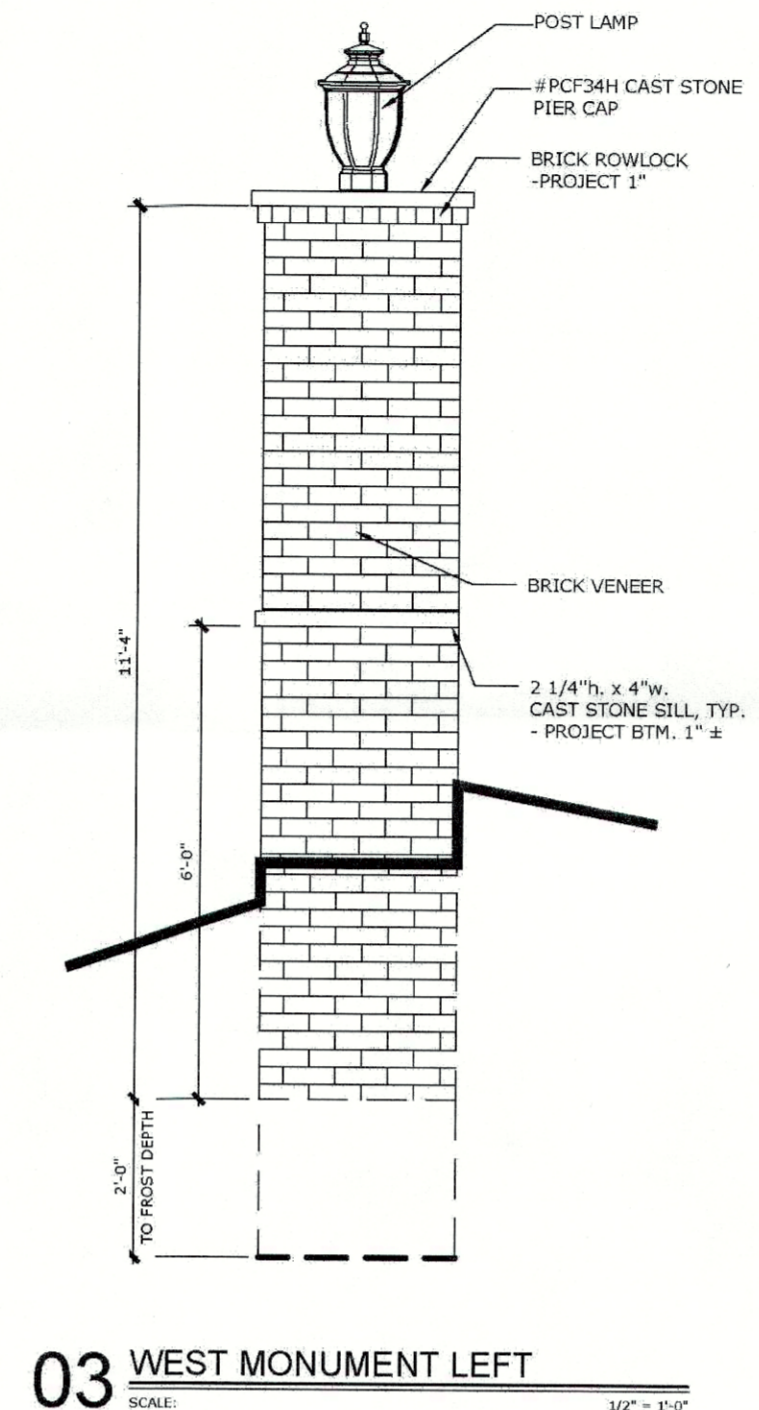
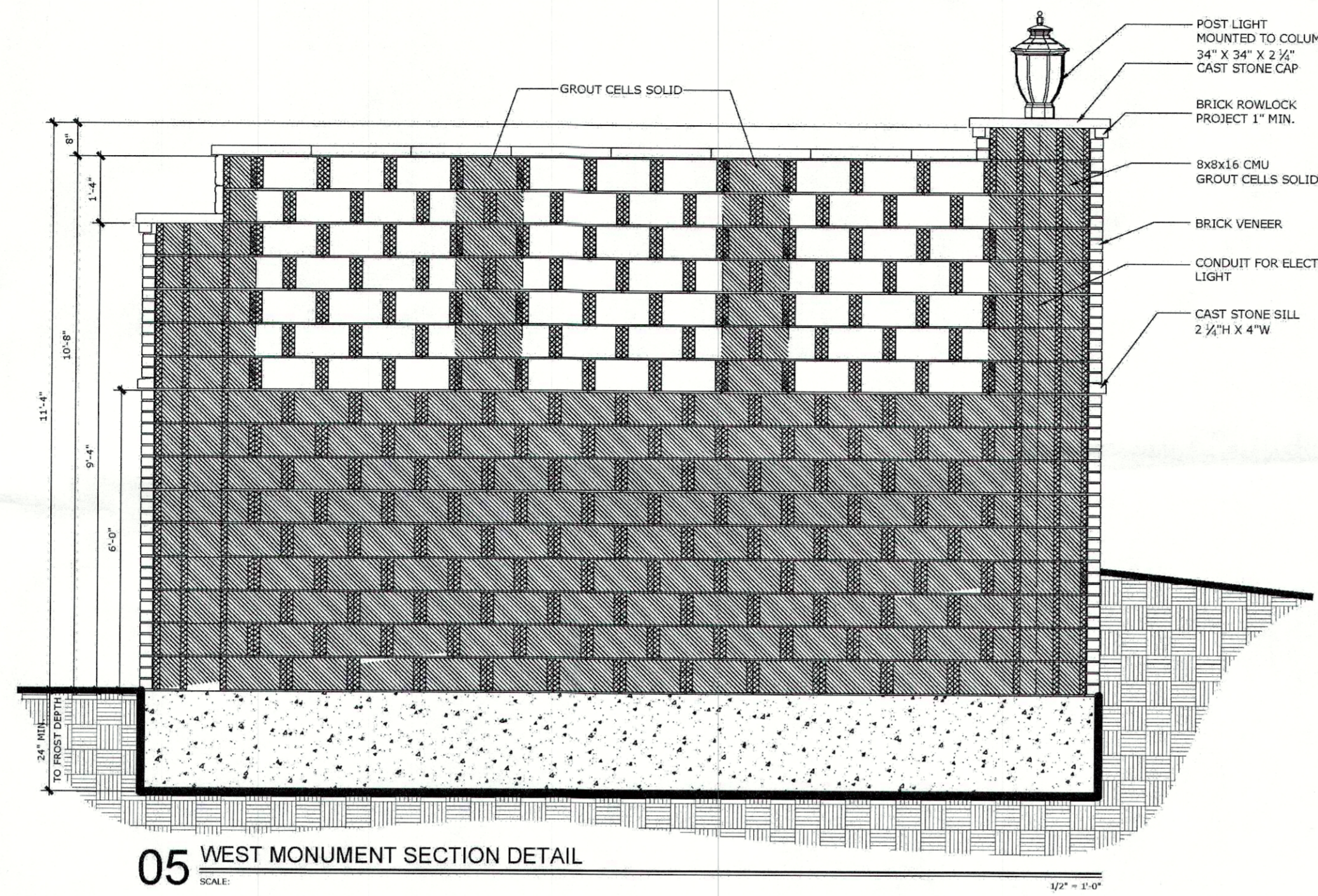
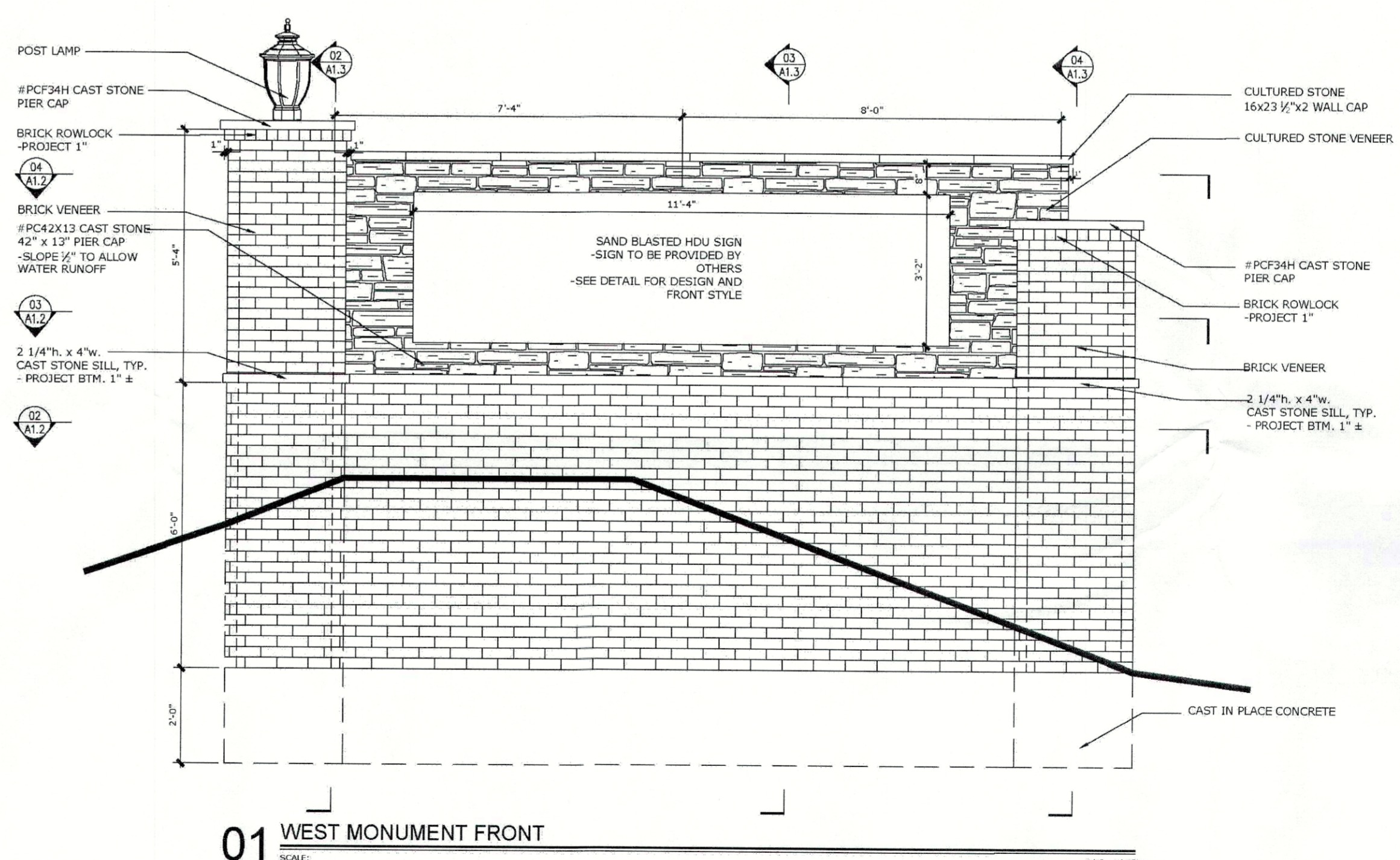
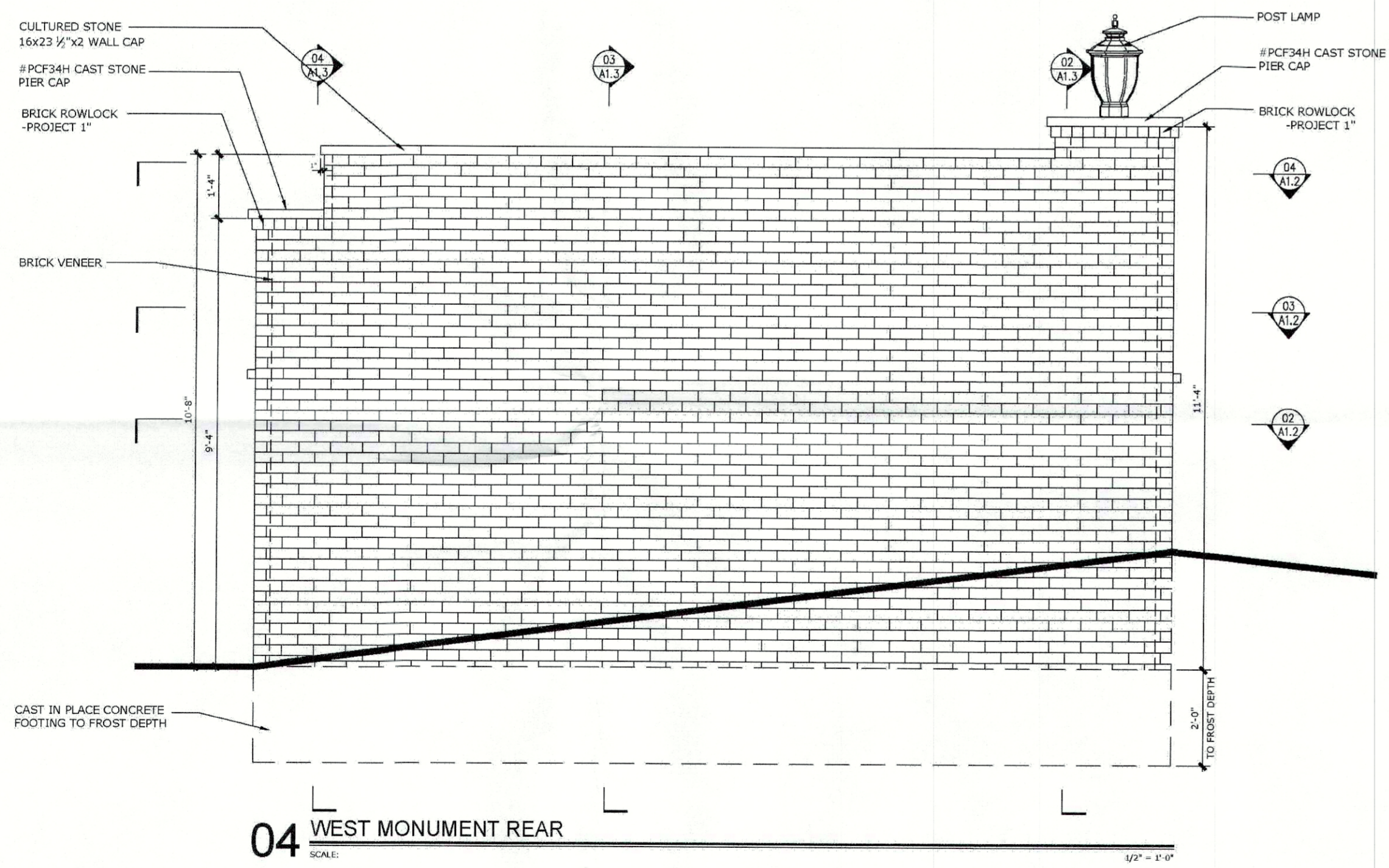


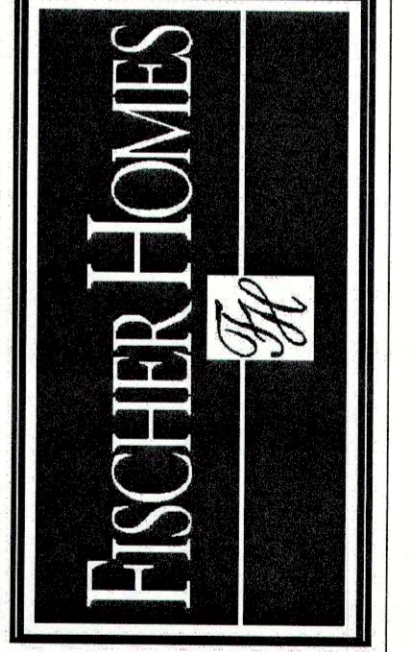
REASON FOR PLOT: FOR CONSTRUCTION
 PLOT DATE: 3/27/2018 3:14 PM



REV. NO.	DATE	FIELD SPEC. HOTLINE: (859) 344-7100	REVISION
###	###	FISCHER HOMES, Inc.	###
###	###	5151 Jefferson Blvd. Louisville, KY 40219	###
###	###	502-485-1508	###
###	###	www.MindelScott.com	###



ENTRY MONUMENT FOR:
FLOYDS FORK
 AIKEN ROAD
 LOUISVILLE, KY 40245



Sheet No.
A1.0
 Sheet 1 of 1

Job No.
EFF-610

RECEIVED
 APR 12 2018
 PLANNING & DESIGN SERVICES

NOTE:
 SIGNATURE ENTRANCE WALL &
 DETAILS PROVIDED BY:
 THE FISCHER GROUP
 3940 OLYMPIC BLVD.
 SUITE 100
 ERLANGER, KY 41018

CASE# 18DEVPLAN1022
 RELATED CASES: 17LSCAPE1054
 17LSCAPE1048, 16SUBDIV1011,
 15SUBDIV1015



PROFESSIONAL'S SEAL

MINDEL SCOTT
 ENGINEERING & ARCHITECTURE
 5151 Jefferson Blvd. Louisville, KY 40219
 502-485-1508

OWNER / DEVELOPER
JSAR, LLC
 9707 SHELBYVILLE ROAD
 LOUISVILLE, KY 40223
 (502) 548-6276

SIGNATURE ENTRANCE WALL
MANOR AT FLOYDS FORK AND MEADOWS AT FLOYDS FORK (F.K.A. SUTHERLAND POINTE)
 15905 AIKEN RD., LOUISVILLE, KENTUCKY 40245
 TAX BLOCK 16, LOTS 100
 D.B. 10724, P.C. 70

Vertical Scale:	N/A
Horizontal Scale:	N/A
Date:	2/22/18
Job Number:	3166
Sheet	2
	of 6