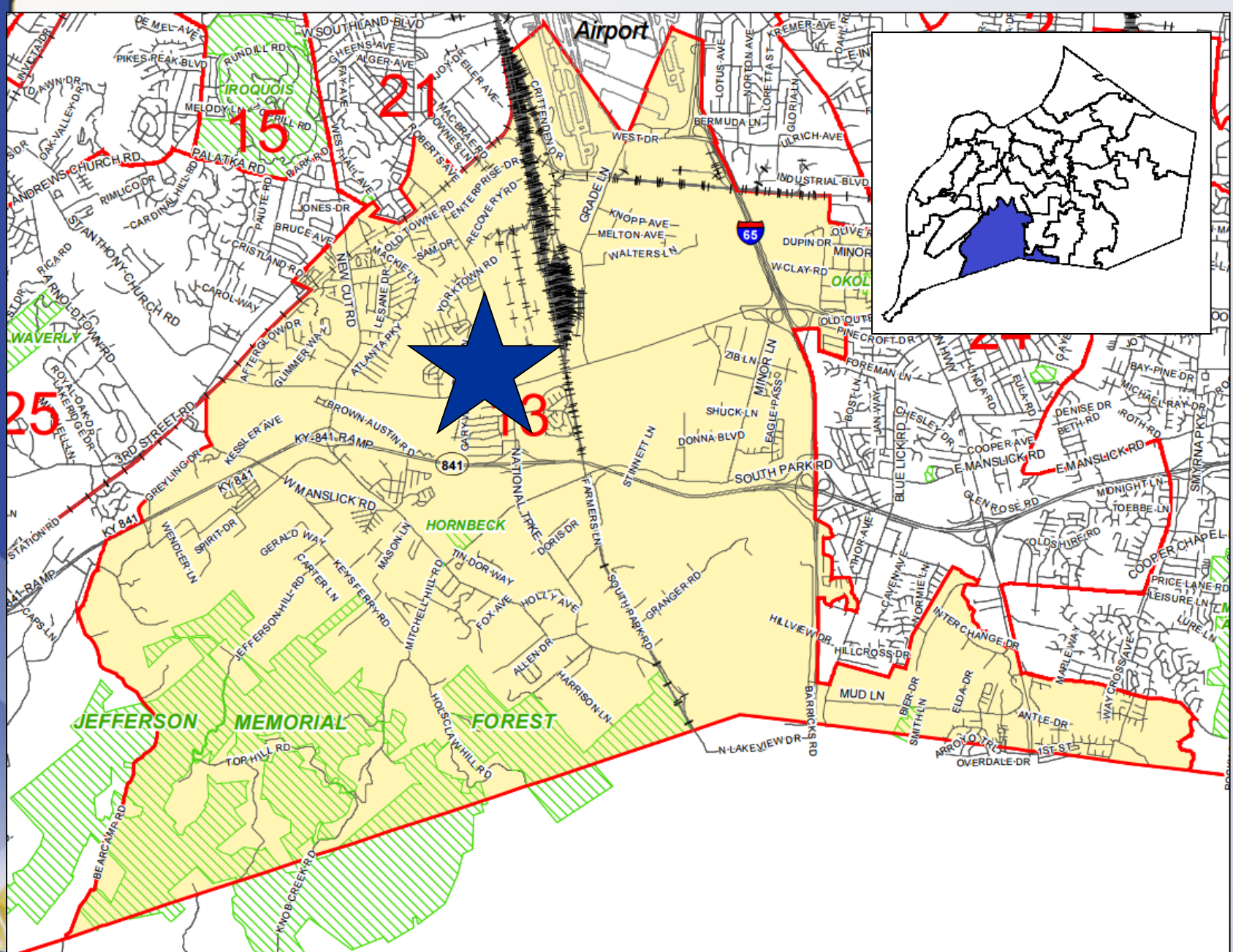


# 19STREETS1003 HAY COURT CLOSURE



Planning & Zoning Committee  
July 16, 2019



# Request(s)

- Close portion of Hay Court west of National Turnpike

# Case Summary

- Hay Court currently extends west from National Turnpike and terminates near Nash Road.
- The applicant is proposing to close an unimproved portion of the right-of-way.
- Closure is related to 17ZONE1041.



NASH ROAD R/W-VARIES

NATIONAL TURNPIKE  
KY HWY 1020



Ced & Lila Sheehan and  
Rogina & Jerome Gosse  
O.B. 7036 Pg. 273

Barbara Adams  
O.B. 10178 Pg. 314

N 72°45'00" E 595.00'

The Bernie R Elder Living Trust  
8782 Thorton Lane, Louisville, KY, 40291  
O.B. 8598 Pg. 854

Roger & Phyllis Basham  
O.B. 8248 Pg. 194

C/L HAY COURT 30' R/W  
Resolution No. 28, series 1982, 5-6-1982

The Bernie R Elder Living Trust  
O.B. 10314 Pg. 573

N 17°15'00" W  
30.00'

N 72°45'00" E 420.00'

S 17°15'00" E  
170.00'

HAY COURT 30' R/W  
Resolution No. 28 series 1982, 5-6-1982

S 72°45'00" W 230.00'

N 72°45'00" E 250.00'

1/4 Sec. 10 Survey Corner & Open Corner  
O.B. 6347 Pg. 205

The Bernie R Elder Living Trust  
8782 Thorton Lane, Louisville, KY, 40291  
O.B. 8598 Pg. 854

The Bernie R Elder Living Trust  
8782 Thorton Lane, Louisville, KY, 40291  
O.B. 8598 Pg. 854

The Bernie R Elder Living Trust  
8782 Thorton Lane, Louisville, KY, 40291  
O.B. 8598 Pg. 854

S 72°48'08" W 278.34'

S 72°46'00" W 126.66'

S 72°45'00" W 107.85'

S 72°46'16" W 142.15'

299.73'

273.06'

126.66'

107.85'

142.15'

FE Trucking LLC  
O.B. 10313 Pg. 371

Dayr Keppel  
O.B. 10322 Pg. 880

Balson, LLC  
O.B. 7836 Pg. 588

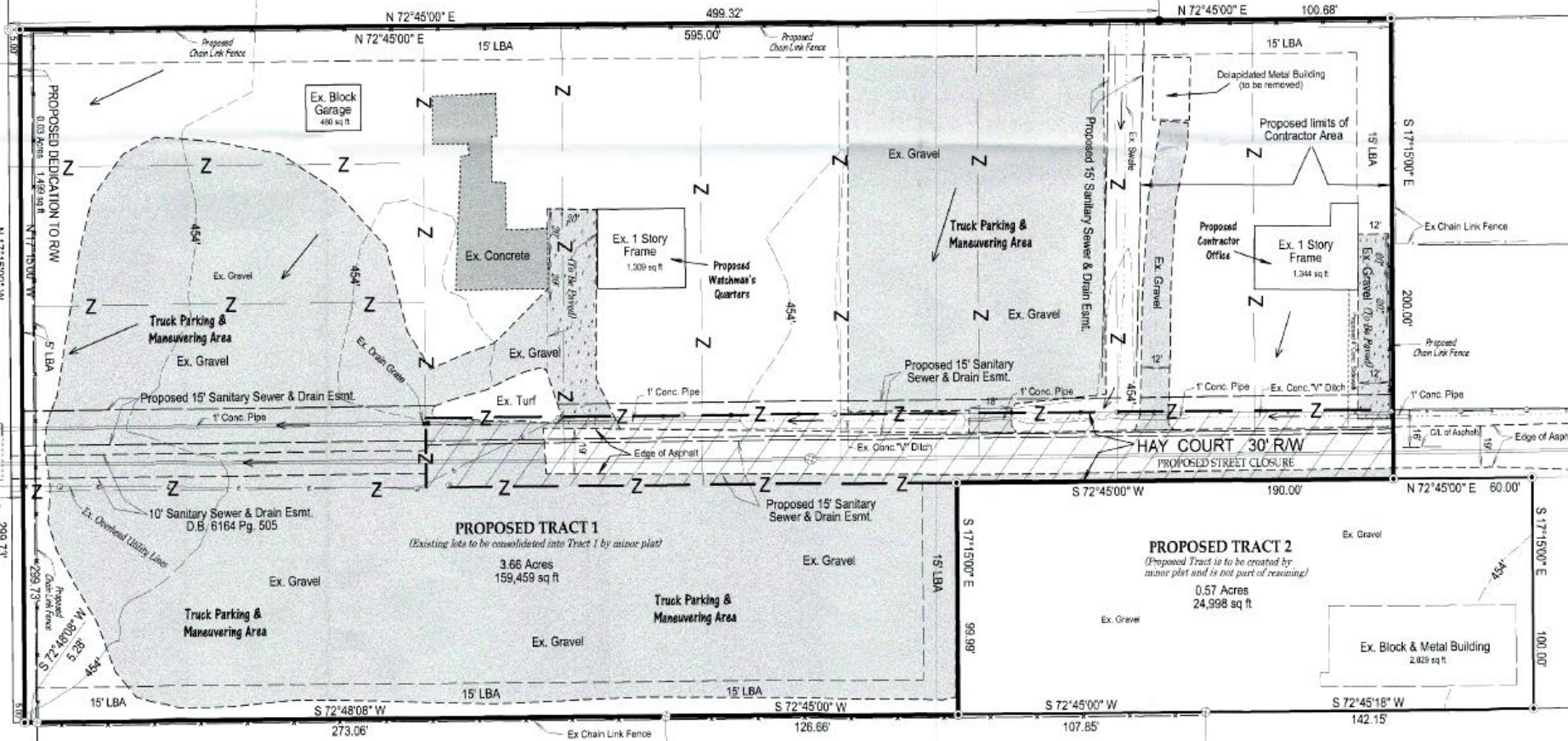
EXPIRATION DATE 10/18/20  
 STRUCTURE OF PLANNING COMMISSION  
 PLANNING

**C-2**  
 (SW Form District)

Cecil & Lila Sheehan and  
 Regina & Jerome Besse  
 D.B. 7326 Pg. 273

**C-2**  
 (SW Form District)

Barbara Adams  
 D.B. 10178 Pg. 314



8501 Nash Road  
**C-2**  
 (SW Form District)  
 TZ Trucking LLC  
 D.B. 10313 Pg. 271

8302 R National Turnpike  
**C-2**  
 (SW Form District)  
 Dayri Koppel  
 D.B. 10322 Pg. 980

8302 National Turnpike  
**C-2**  
 (SW Form District)  
 Batcave, LLC  
 D.B. 7836 Pg. 588

# Public Meetings

- LD&T meeting on 5/16/2019
- Planning Commission public hearing on 5/23/2019
  - No one spoke in opposition.
  - The Commission recommended approval of the alley closures with a vote of 7-0 (three members were not present).