

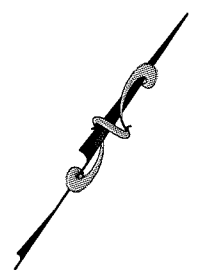
LAND DESIGN & DEVELOPMENT, INC.
ENGINEERING • SURVEYING • LANDSCAPE ARCHITECTURE
503 Washburn Avenue, Suite 101
Louisville, Kentucky 40222
(502) 426-9374 FAX (502)426-9375

19ZONE1036
Rezoning Description
7717 Saint Andrews Church Road
(May 24, 2019)

R-4 to R-6

BEGINNING at a point on the centerline of Saint Andrews Church Road thence leaving said centerline **S34° 30'E 240'** to a point; thence **S55° 0'W 80.8'** to a point; thence **N34° 15'W 31.275'** to a point; thence **N79° 40'W 293.37'** to a point on the centerline of Saint Andrews Church Road; thence with said centerline **N55° 0'E 289.59'** to the point of **BEGINNING** and being a portion of the tract of land belonging to GEORGE E KOPPEL JR REV TRUST U A & EULA C KOPPEL REV TRUST U A by Deed Book 10057, Page 0737 of record in the Jefferson County Clerk's Office located in Louisville, Kentucky and containing 0.7747 acres more or less.

RECEIVED
MAY 24 2019
PLANNING &
DESIGN SERVICES



					R-4/N BRACEY, LEONARD G 9821 HOLIDAY DR LOUISVILLE, KY, 40272-2832 D.B. 9965, Pg. 0758	R-4/N BRACEY, LEONARD G 9821 HOLIDAY DR LOUISVILLE, KY, 40272-2832 D.B. 6805, Pg. 0587	R-4/N GLENN, RICHARD D 7716 ST ANDREWS CHURCH RD LOUISVILLE, KY, 40214-3917 D.B. 9923, Pg. 0809	R-4/N MILLER, JAMES E Jr MILLER TONYA J 7714 ST ANDREWS CHURCH RD LOUISVILLE, KY, 40214-3917 D.B. 10041, Pg. 0650	R-4/N RAGLAND, CHERI 600 KIRKWOOD TER N SAINT PETERSBURG, FL, 33701-1616 D.B. 10963, Pg. 960	
--	--	--	--	--	--	--	---	--	---	--

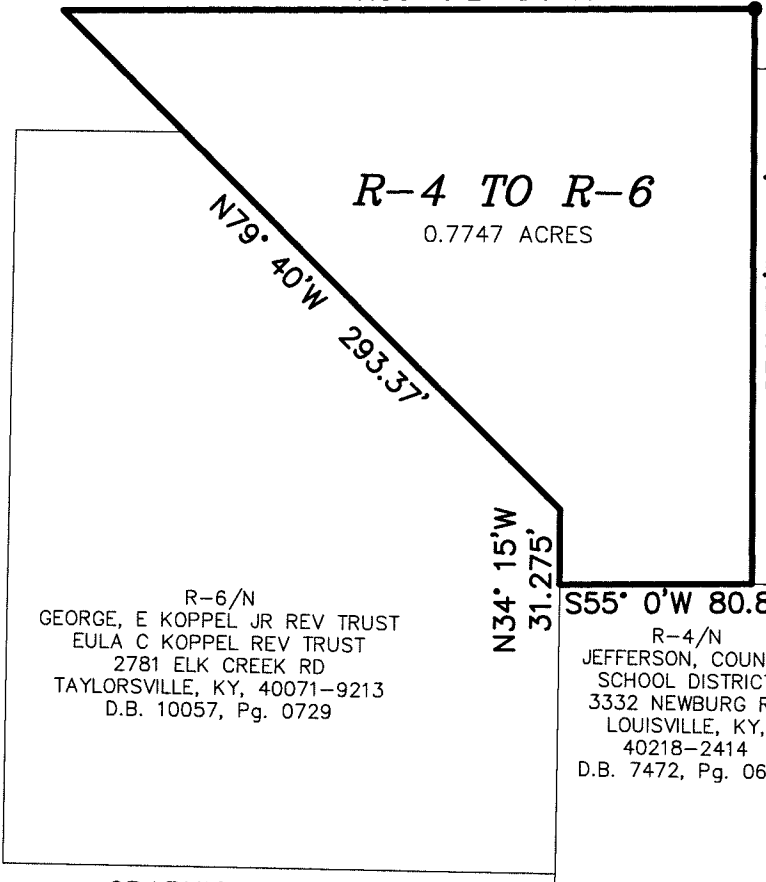
SAINT ANDREWS CHURCH ROAD (MIN 120' R/W REQ) N55° 0'E 289.59'

Point of Beginning

19 MAY 10 37

RECEIVED
MAY 24 2019
PLANNING &
DESIGN SERVICES

CARDINAL OAKS DRIVE (PRIVATE DRIVE)



CN/N
BARNIE, R ELDER
LIVING TRUST
9702 THIXTON LN
LOUISVILLE, KY,
40291-3345
D.B. 9280, Pg. 0640

R-6/N
GEORGE, E KOPPEL JR REV TRUST
EULA C KOPPEL REV TRUST
2781 ELK CREEK RD
TAYLORSVILLE, KY, 40071-9213
D.B. 10057, Pg. 0733

R-6/N
GEORGE, E KOPPEL JR REV TRUST
EULA C KOPPEL REV TRUST
2781 ELK CREEK RD
TAYLORSVILLE, KY, 40071-9213
D.B. 10057, Pg. 0729

R-4/N
JEFFERSON, COUNTY
SCHOOL DISTRICT
3332 NEWBURG RD
LOUISVILLE, KY,
40218-2414
D.B. 7472, Pg. 0643

ZONING CHANGE EXHIBIT PLAT

Property of:
GEORGE E KOPPEL JR REV TRUST U A
& EULA C KOPPEL REV TRUST U A
2781 ELK CREEK RD,
TAYLORSVILLE, KY 40071-9213

TAX BLOCK 1033 , LOT 0129
D.B. 10057, PG. 0737

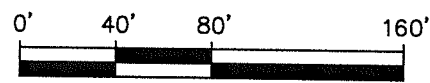
Property Address:
7717 SAINT ANDREWS CHURCH ROAD



LAND DESIGN & DEVELOPMENT, INC.

ENGINEERING • LAND SURVEYING • LANDSCAPE ARCHITECTURE
503 WASHBURN AVENUE, SUITE 101, LOUISVILLE, KY 40222
PHONE: 502.426.9374 FAX: 502.426.9375
WEB SITE: WWW.LDD-INC.COM

GRAPHIC SCALE



SCALE: 1"=80'