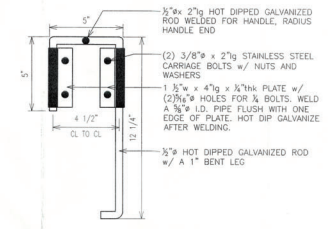
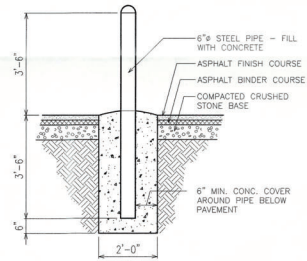
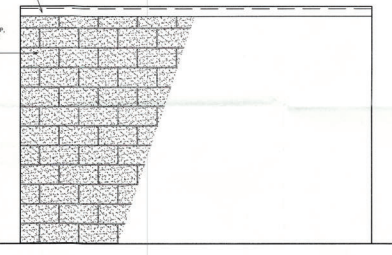
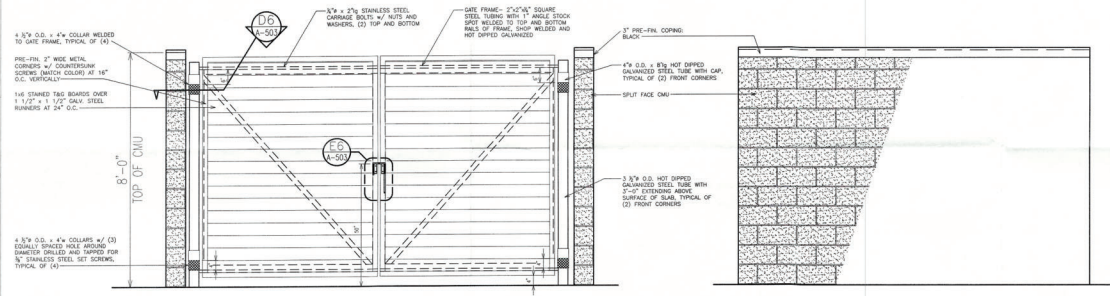
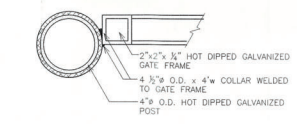


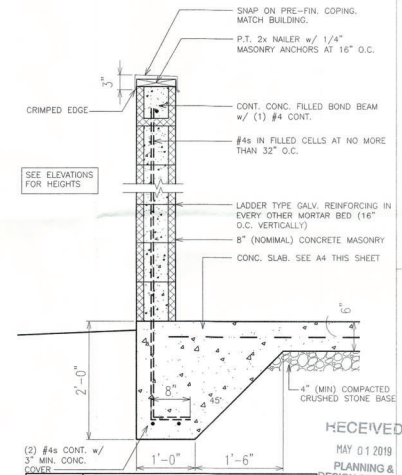
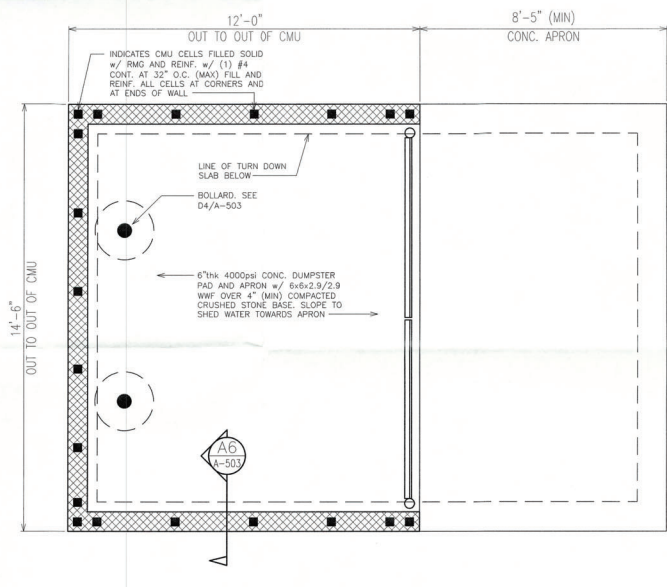
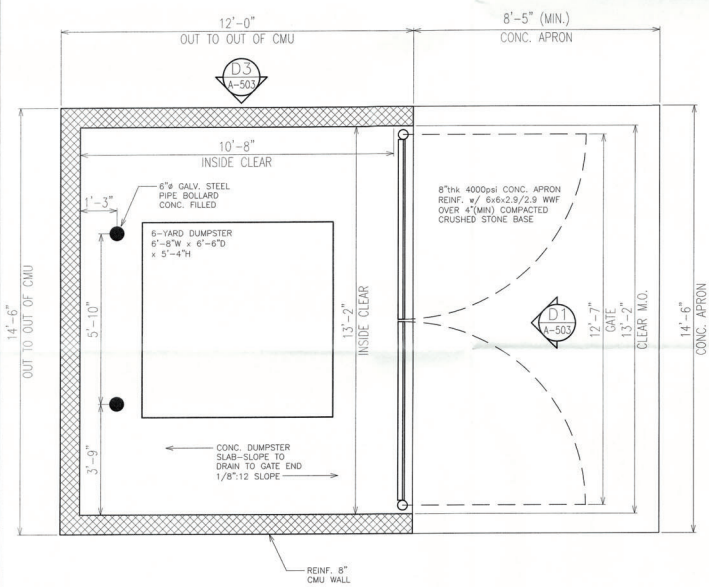
DRAWN BY:	GHF/GAC
CHECKED BY:	DAF
ISSUED:	12/11/18
REVISION(S):	
FILE:	2018-049



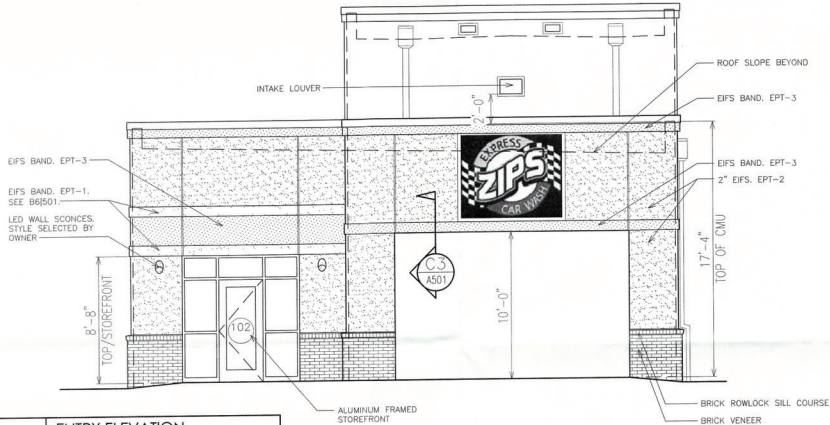
**E6 DETAIL**  
 3" = 1'-0"



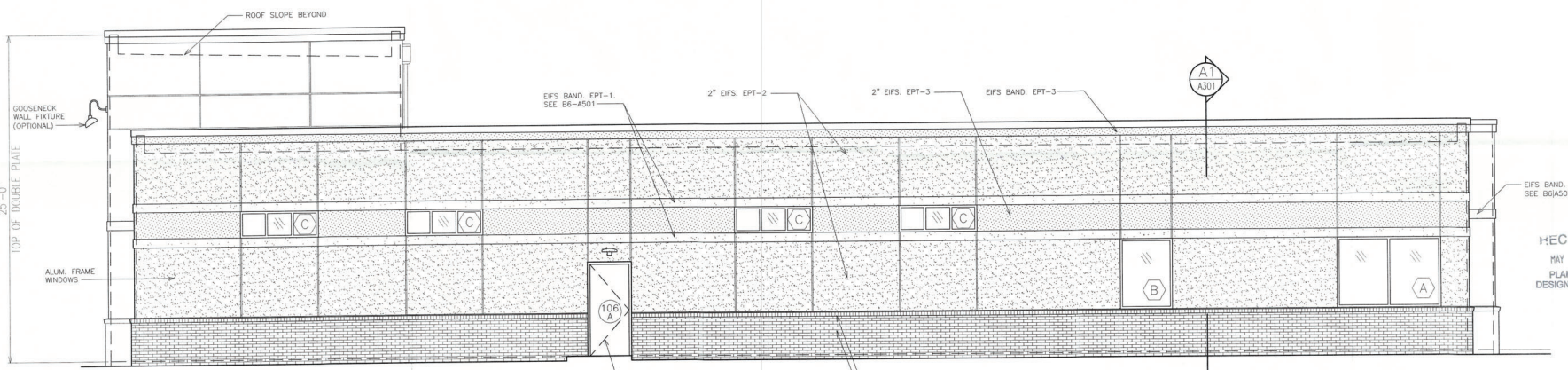
**D6 DETAIL**  
 3" = 1'-0"



RECEIVED  
 MAY 01 2019  
 PLANNING &  
 DESIGN SERVICES



**B1** ENTRY ELEVATION  
1/4" = 1'-0"



**A1** OFFICE SIDE ELEVATION  
1/4" = 1'-0"

**EXTERIOR FINISHES**

**DOWNSPOUTS:**  
DARK BRONZE

**OVERFLOW SCUPPERS:**  
DARK BRONZE

**METAL ROOF COPING:**  
REGAL RED  
\*COLOR TO MATCH WITH EPT-3, GC SEND ARCHITECT SAMPLE TO CONFIRM.

**HOLLOW METAL DOORS & FRAMES:**  
DARK BRONZE

**ALUMINUM WINDOWS & STOREFRONT:**  
DARK BRONZE

**BRICK VENEER:**  
BORAL BRICKS, BASTILLE MODULAR

**EXTERIOR PAINT COLORS:**  
EPT-1:  
"KILIM BEIGE" SW6106  
EPT-2:  
"LATTE" SW6108  
EPT-3:  
"CHERRY TOMATO" SW6964  
\*COLOR TO MATCH METAL ROOF COPING  
EPT-4:  
"URBANE BRONZE" SW7048

**FALCONNIER**

4622 Chambliss Avenue  
Knoxville, TN 37919  
Phone 865-584-7868  
Fax 865-584-3199  
faldesco@gmail.com  
© copyright 2018

OWNER REVIEW & PRICING  
NOT FOR CONSTRUCTION  
10/03/18



**SUDS UP CARWASH**

8325 COLERAIN AVE.  
COLERAIN TOWNSHIP  
HAMILTON COUNTY, OHIO

**ELEVATIONS**

AS INSTRUMENTS OF SERVICE, THESE DRAWINGS AND THE DESIGN REPRESENTED BY THEM ARE THE PROPERTY OF DAMIAN A. FALCONNIER AND AS SUCH ARE PROTECTED BY STATE AND FEDERAL COPYRIGHT LAWS. REPRODUCTION OR USE OF THESE DRAWINGS OTHER THAN FOR THE PROJECT INTENDED WITHOUT WRITTEN CONSENT FROM DAMIAN A. FALCONNIER IS PROHIBITED. UNAUTHORIZED USE WILL BE SUBJECT TO LEGAL ACTION.

RECEIVED  
MAY 01 2019  
PLANNING & DESIGN SERVICES

DRAWN BY:	GHF/GAC
CHECKED BY:	DAF
ISSUED:	10/03/18
REVISION(S):	
FILE:	2018-085

**A-201**

OWNER REVIEW & PRICING  
NOT FOR CONSTRUCTION  
10/03/18

**SUDS UP  
CARWASH**

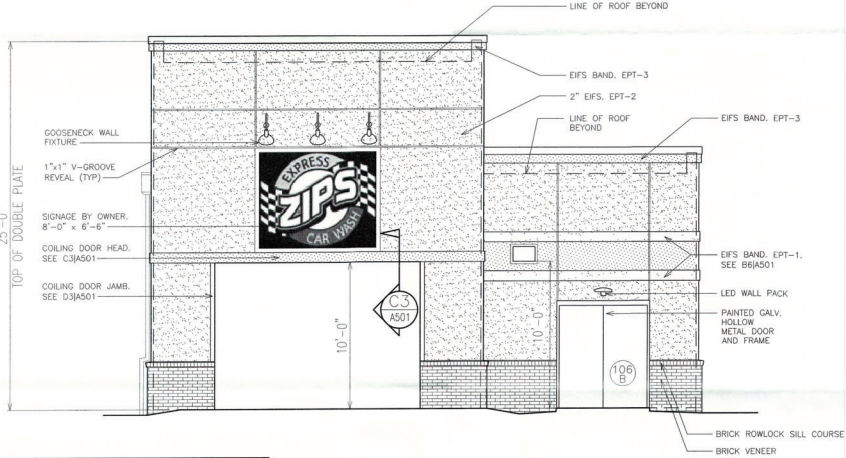
8325 COLERAIN AVE.  
COLERAIN TOWNSHIP  
HAMILTON COUNTY, OHIO

**ELEVATIONS**

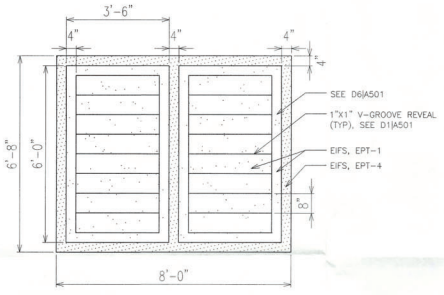
AS INSTRUMENTS OF SERVICE, THESE DRAWINGS AND THE DESIGN REPRESENTED BY THEM ARE THE PROPERTY OF DAMON A. FALCONNIER AND AS SUCH ARE PROTECTED BY STATE AND FEDERAL COPYRIGHT LAWS. REPRODUCTION OR USE OF THESE DRAWINGS OTHER THAN FOR THE PROJECT INTENDED WITHOUT WRITTEN CONSENT FROM DAMON A. FALCONNIER IS PROHIBITED. UNAUTHORIZED USE WILL BE SUBJECT TO LEGAL ACTION.

DRAWN BY:	GHF/GAC
CHECKED BY:	DAF
ISSUED:	10/03/18
REVISION(S):	
FILE:	2018-085

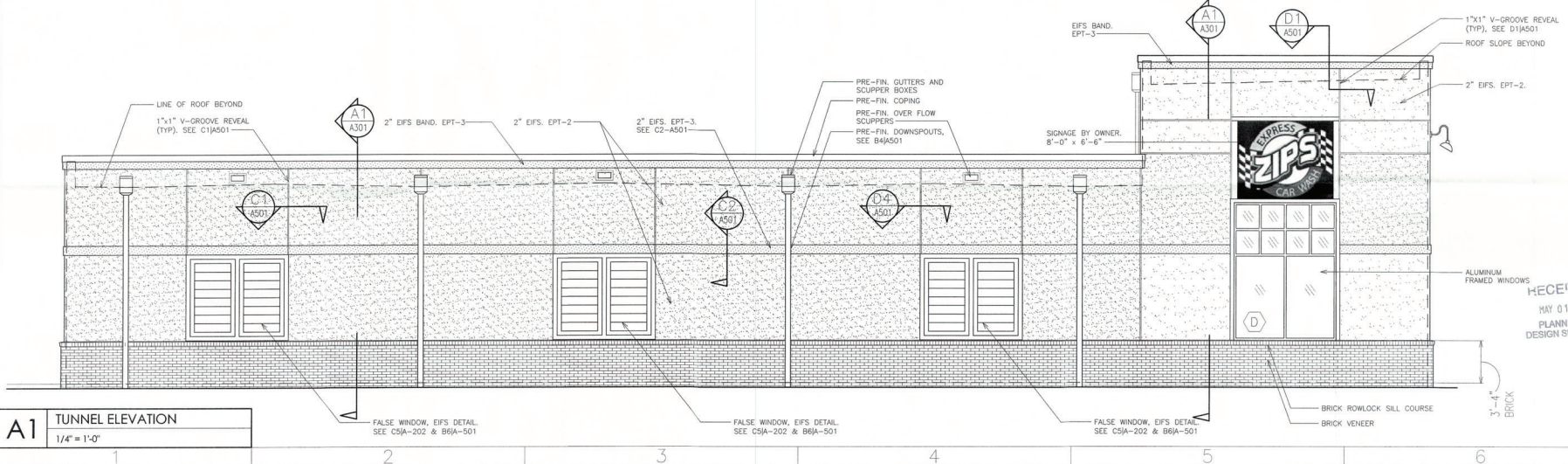
**A-202**



**B1** EXIT ELEVATION  
1/4" = 1'-0"



**C5** FALSE EIFS WINDOW ELEVATION  
1/4" = 1'-0"



**A1** TUNNEL ELEVATION  
1/4" = 1'-0"