

Case 17Cell 1001 Appeal 8507 Westport Road



Louisville Metro Planning Commission
Steve Hendrix, Planning Supervisor
August 17, 2017

Request

Cell Tower -----Replacement

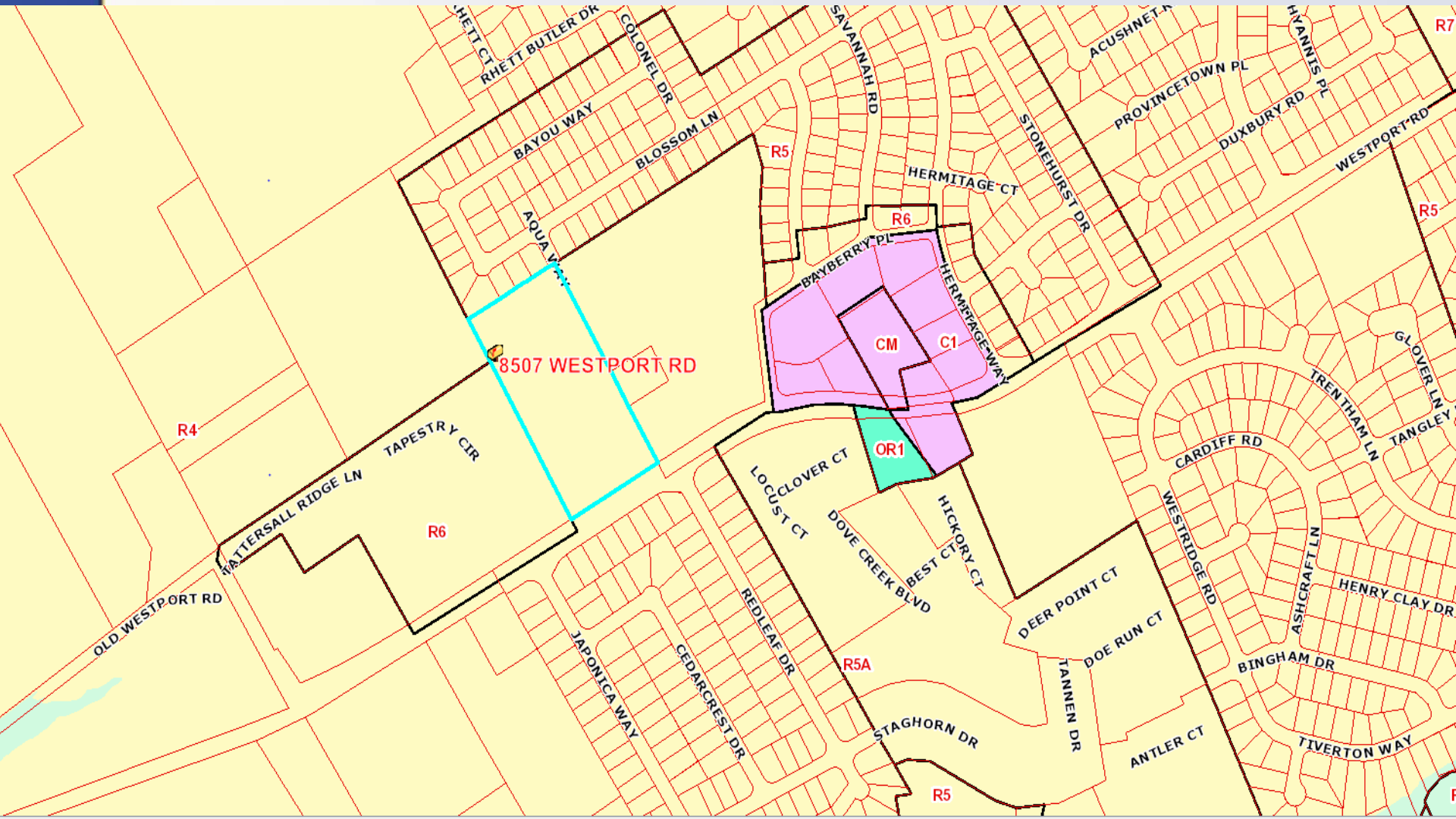
165 foot tower, 5 foot lightning arrestor

TOTAL HEIGHT: 170 feet

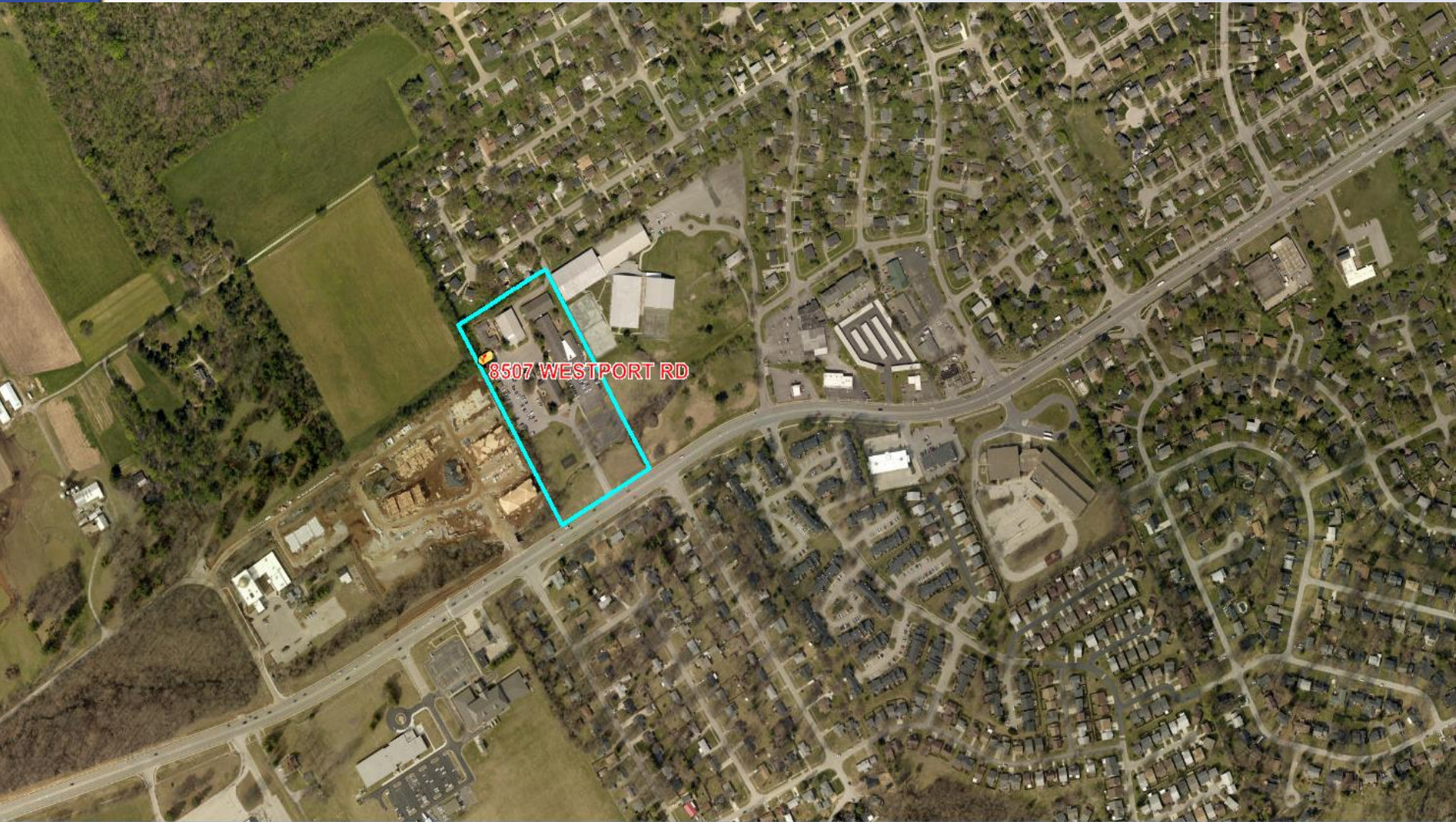
Existing tower –142.6 feet.

Compound Area: 1,680 square feet
(Remains the same)

Zoning Map



Aerial Map



Aerial Map







www.wm.com
877-488-3277
800-788-7811
826155
WASTE MANAGEMENT
WASTE MANAGEMENT

WM is a leader in providing the following information:
Information may be provided only to authorized personnel.
Please do not give this information to anyone else.
If you do not know if it is your name, please call 800-788-7811.
If you are not sure if it is your name, please call 800-788-7811.
If you are not sure if it is your name, please call 800-788-7811.
If you are not sure if it is your name, please call 800-788-7811.
If you are not sure if it is your name, please call 800-788-7811.

Private
Loading
Zone









Staff Findings

- Replaces the existing 142.6 foot tower constructed in 2006.
- Compound area will be approximately 640 feet from Westport Road.
- No lighting.
- Compound screened with 8 foot high wooden fence.
- Will have the capacity for a total of 4 carriers.
- Existing structures and vegetation will provide a screen for the compound area on all four sides.

Required Actions

Confirm the Land Development and Transportation Committee decision of July 13, 2017, that approved the replacement.

or

Refute the Land Development and Transportation Committee decision of July 13, 2017, that approved the replacement.