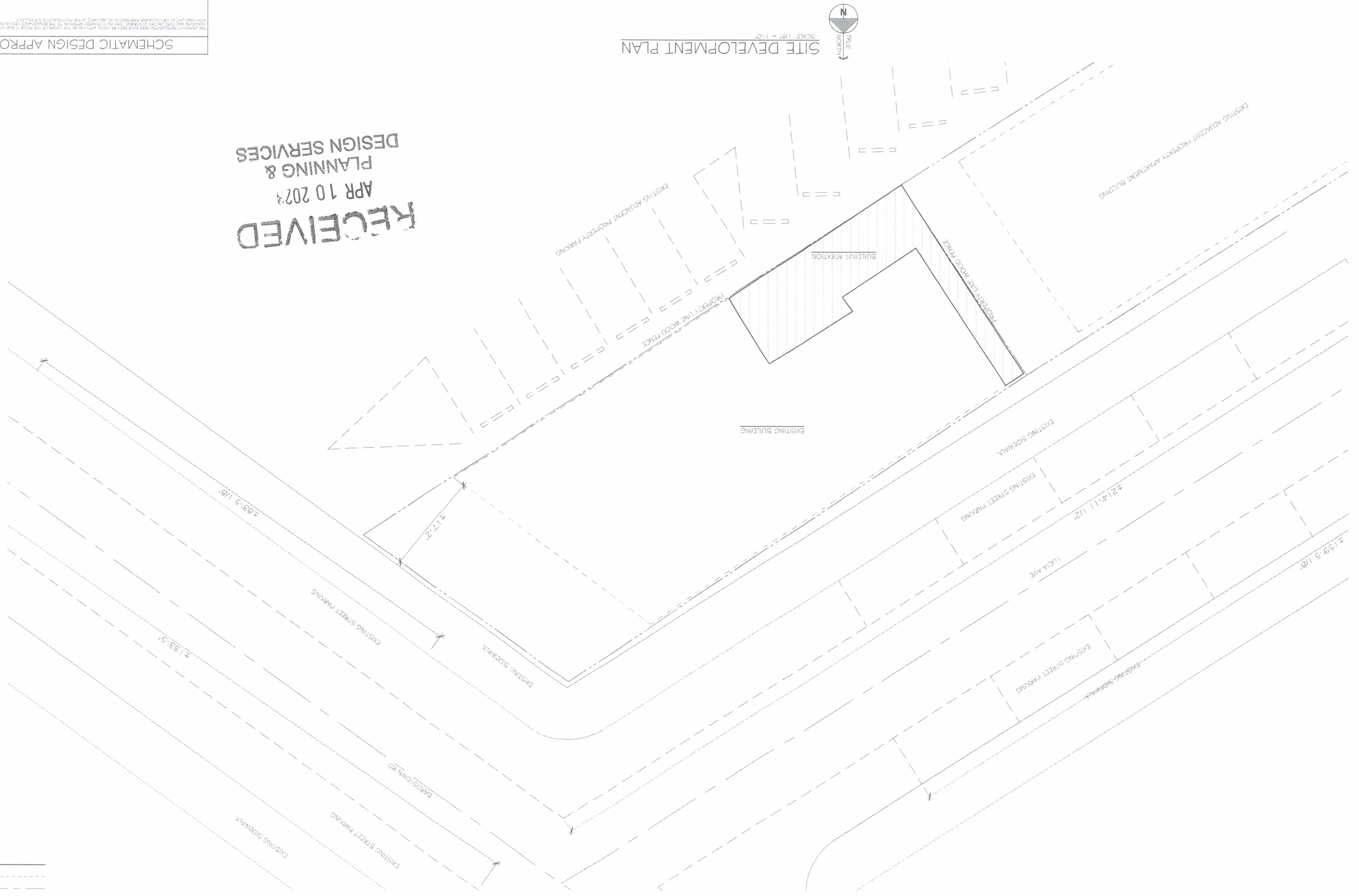


NOTICE:
 The Architect/Engineer does not define the scope of individual trades.
 subcontractors, material suppliers, or vendors. Any sheet numbering system used
 with lettering designed solely for the Architect/Engineer's convenience, and
 is not intended to define a subcontractor's scope of work. Information regarding
 individual trades, subcontractors, material suppliers, and vendors may be detailed,
 described and indicated at different locations throughout these documents. No
 consideration will be given to requests for change orders for labor to obtain and
 review the complete set of drawings and specifications when preparing bids.
 prices and quantities.

SITE DEVELOPMENT PLAN
 SCALE: 1/8" = 1'-0"
 NORTH



RECEIVED
 APR 10 2023
 PLANNING &
 DESIGN SERVICES

DATE:	PRINTED NAME & TITLE
CLIENTS SIGNATURE:	RENAISSANCE REPRESENTATIVE
SCHEMATIC DESIGN APPROVAL	

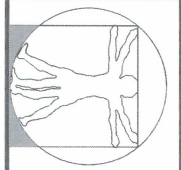
NOT FOR CONSTRUCTION

SITE PLAN LEGEND
 - - - - - NEW BUILDING ADDITION LINE
 - - - - - EXISTING BUILDING LINE
 - - - - - EXISTING CENTER ROAD LINE
 - - - - - PROPERTY LINE

SHEET NUMBER:
C1.0

SCALE: AS INDICATED
 JOB NO.: 2022-561
 REVISIONS:
 DATE: MAR 29, 2023
 DRAWN BY: R. KILEY
 CHECKED BY: N. GRIMES
 APPROVED BY: N. GRIMES

SITE DEVELOPMENT PLAN
MARCUM CONSTRUCTION SERVICES
 1 202 BARDSTOWN ROAD
 LOUISVILLE, KY, 40205



RENAISSANCE DESIGN BUILD, INC.
 1012 S. Fourth Street
 Louisville, KY 40203
 Tel: 502-424-8373 Fax: 502-587-0931
 www.rdbi-inc.com

73-VAR1 AMLC-0051