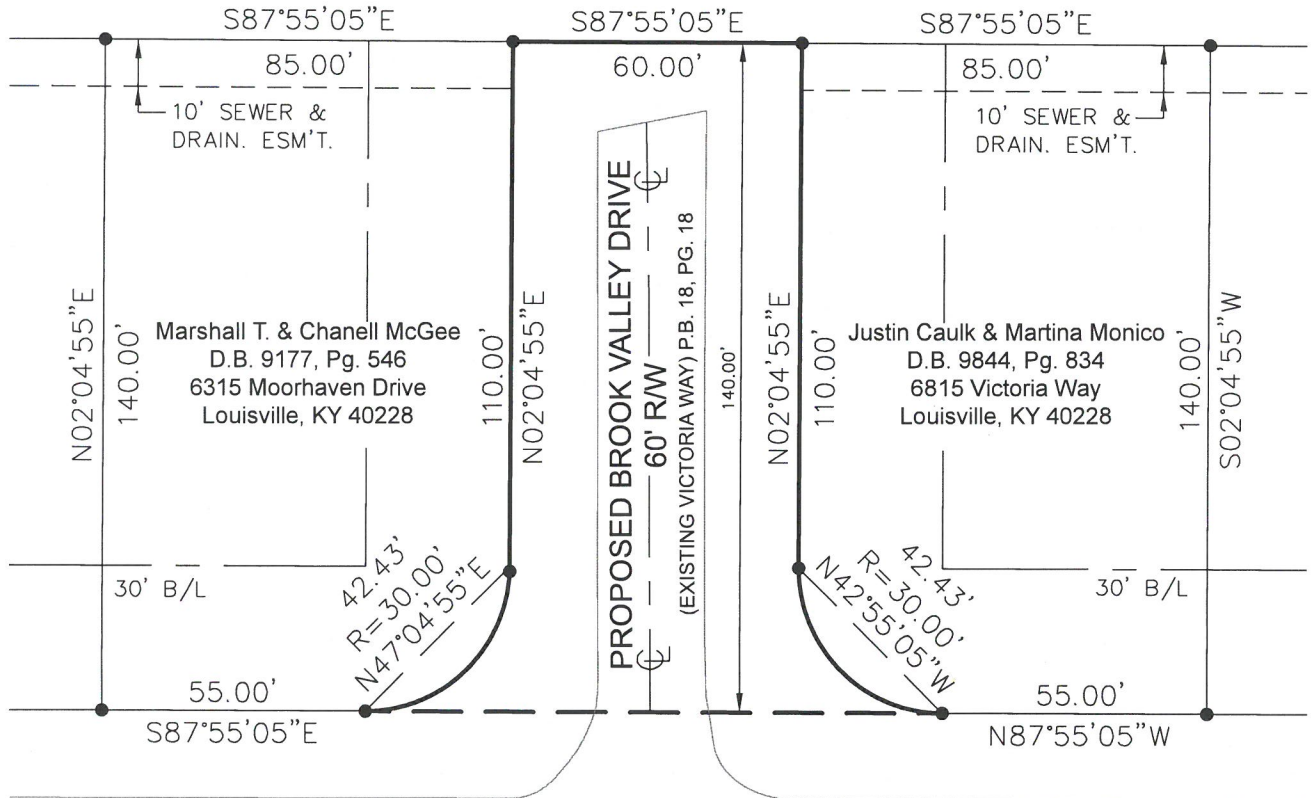


THE BEARING DATUM FOR THIS SURVEY IS ADOPTED FROM WOODROW MANOR, SECTION 1 SUBDIVISION OF RECORD IN PLAT BOOK 18, PAGE 18 IN THE OFFICE OF THE CLERK OF JEFFERSON COUNTY, KENTUCKY.



H & T Realty, Inc.  
 D.B. 11217, Pg. 345  
 304 Whittington Parkway, Suite 101  
 Louisville, KY 40222



MOORHAVEN DRIVE - 60' R/W

**APPROVED:**  
 LOUISVILLE METRO PLANNING  
 COMMISSION

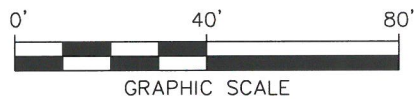
DATE BY 7-30-19

VICTORIA WAY - 60' R/W  
 (NAME TO REMAIN)

LAND SURVEYOR'S CERTIFICATE

I, RICHARD C WILLIAMSON, JR, HEREBY CERTIFY THAT THE SURVEY DEPICTED BY THIS PLAT WERE MADE UNDER MY DIRECT SUPERVISION ON JULY 15, 2019, AND THAT THE DIRECTIONAL AND LINEAR MEASUREMENTS SHOWN HEREON ARE TRUE AND CORRECT TO THE BEST OF MY KNOWLEDGE.

● INDICATES PROPERTY CORNER (DEED)



RICHARD C. WILLIAMSON JR  
 LICENSED PROFESSIONAL LAND SURVEYOR # 4050

DATE

**Milestone**  
  
**design group**  
 108 Daventry Lane, Suite 300  
 Louisville, KY 40223  
 502.327.7073  
 www.milestonedesign.org

**PLAT OF VICTORIA WAY**

THE PURPOSE OF THIS PLAT TO SHOW THE LOCATION OF THE PROPOSED STREET NAME CHANGE

H & T REALTY, INC.  
 304 WHITTINGTON PARKWAY, SUITE 101  
 LOUISVILLE, KY 40222  
 D.B. 11217, PG. 345  
 TAX BLOCK 0636 - LOT 0148

JOB # 18025	DRAWN BY B.M.M.	CHECKED BY R.C.W.	DATE 7/15/2019	SCALE 1" = 40'
----------------	--------------------	----------------------	-------------------	-------------------