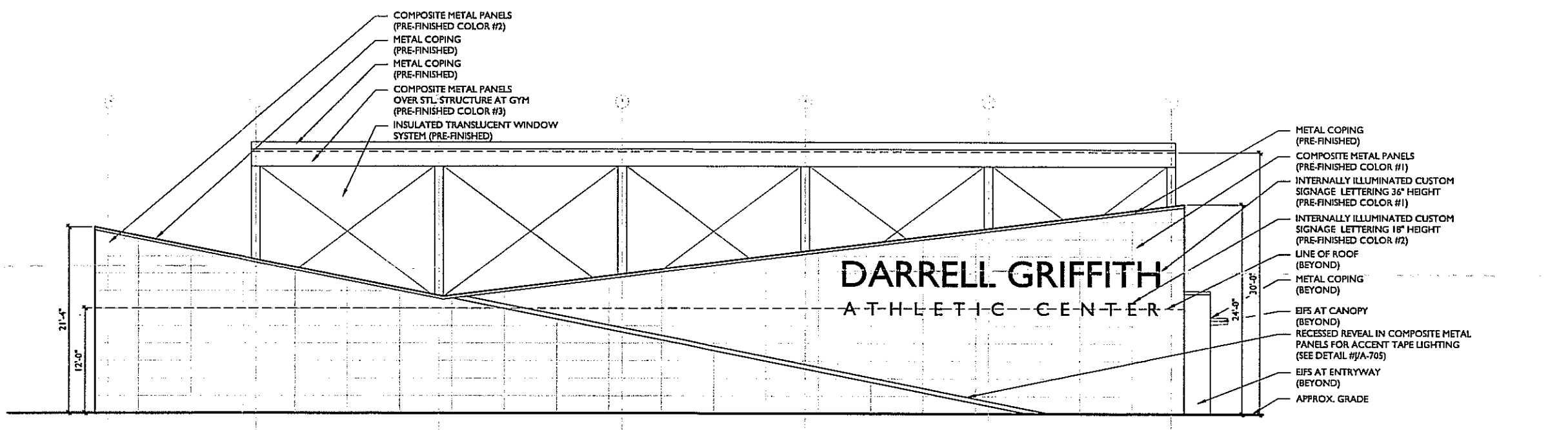
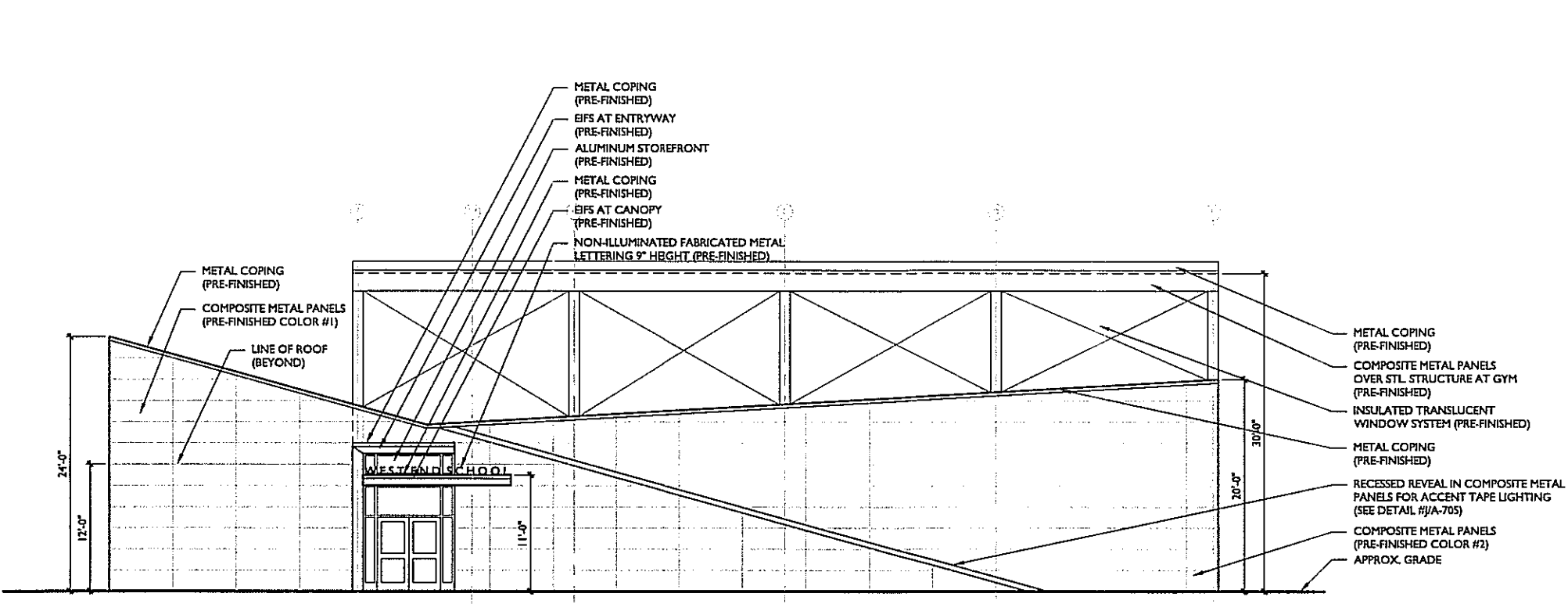


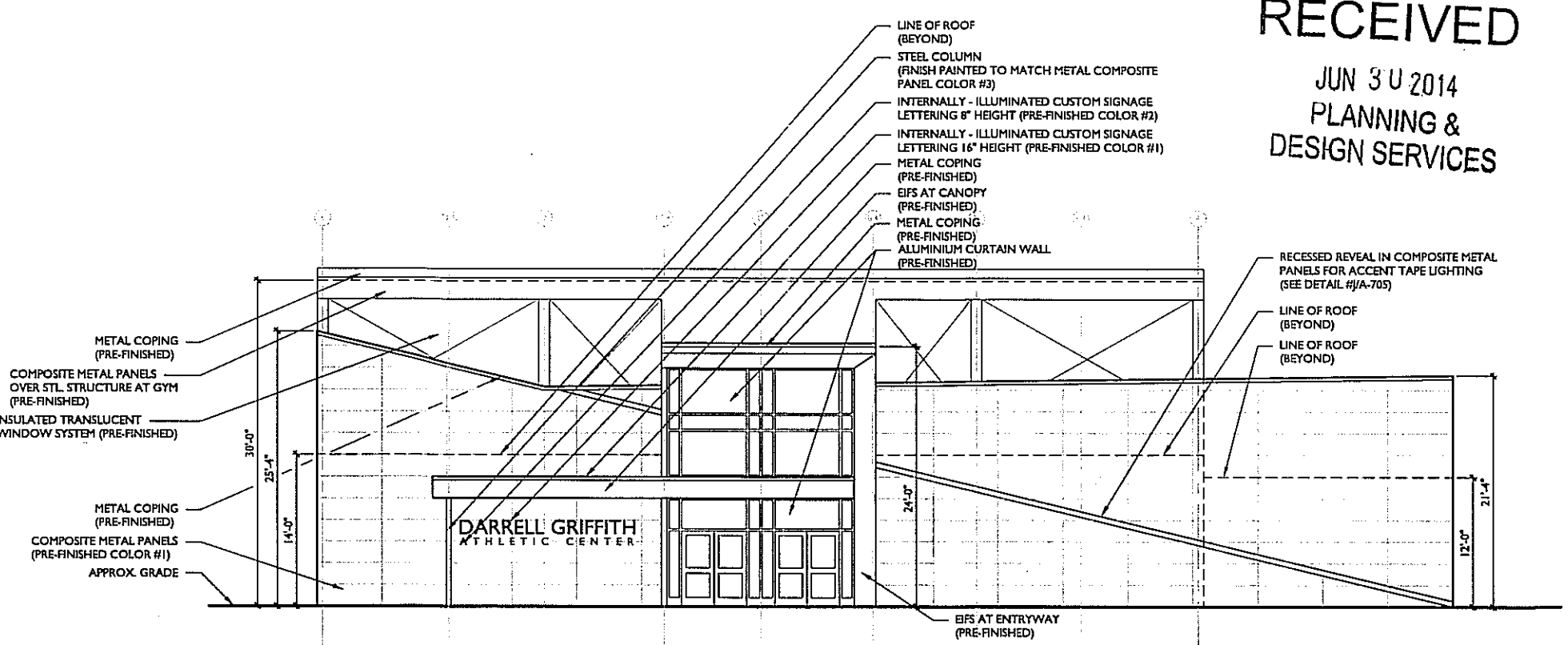
1
A-501
West (Side)
Exterior Elevation
full size plot scale: 1/8"=1'-0"



2
A-501
East (Side)
Exterior Elevation
full size plot scale: 1/8"=1'-0"



4
A-501
North (End)
Exterior Elevation
full size plot scale: 1/8"=1'-0"



3
A-501
South (End)
Exterior Elevation
full size plot scale: 1/8"=1'-0"

RECEIVED
JUN 30 2014
PLANNING &
DESIGN SERVICES



Drawn	JL	Checked By	JL	Project No.	134.01	Revision	1
Date		Date		Date		2	

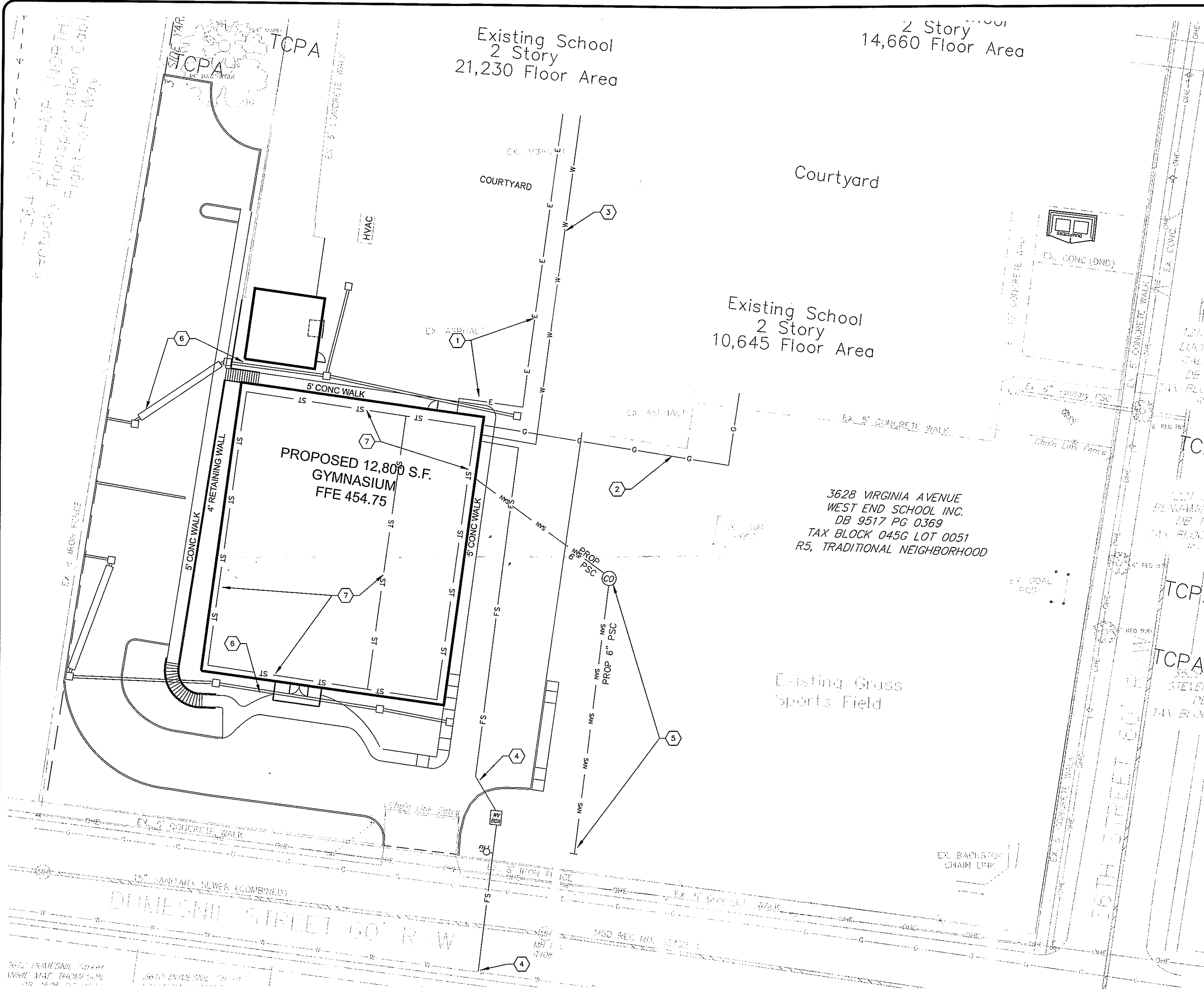


HDDDS

DARRELL GRIFFITH
ATHLETIC CENTER

Sheet
A-501

14VARIANCE1060



UTILITY KEYNOTES:

1. EXTEND ELECTRICAL SERVICE FROM THE MAIN SCHOOL BUILDING (COORDINATE CONDUIT SIZING AND LOADINGS WITH ELECTRICAL ENGINEER)
2. EXTEND GAS SERVICE TO PROPOSED BUILDING FROM EXISTING GAS MAIN ON-SITE. COORDINATE WITH LOUISVILLE GAS & ELECTRIC AND MEP DRAWINGS.
3. EXTEND 2" DOMESTIC WATER SERVICE FROM EXISTING WATER SERVICE IN SCHOOL BUILDING (COORDINATE ADDITIONAL WATER METER INSTALLATION IF NECESSARY WITH LOUISVILLE WATER COMPANY).
4. EXTEND NEW 4" FIRE SERVICE FROM EXISTING WATER MAIN IN STREET TO PROPOSED BUILDING ALONG WITH STORCH CONNECTION (IF REQUIRED) AND NEW ON-SITE FIRE HYDRANT. (COORDINATE WATER METER INSTALLATION WITH LOUISVILLE WATER COMPANY).
5. EXTEND 6" PVC SANITARY SEWER PROPERTY SERVICE CONNECTION FROM EXISTING TAP AVAILABLE FROM PREVIOUS LOT ALONG DUNESNIL STREET. REQUEST CONFIRMATION OF TAP CONNECTION ORDER WITH MSD CUSTOMER SERVICE DEPARTMENT ALONG WITH \$250 FEE.
6. CONSTRUCT 12" HDPE STORM SYSTEM AND CONNECT DOWNSPOUTS TO PROPOSED STORM SYSTEM.
7. INSTALL 4" PERFORATED DRAIN TILE UNDER AND AROUND PROPOSED BUILDING FOUNDATIONS AND CONNECT TO PROPOSED STORM SYSTEM.

GENERAL UTILITY NOTES:

1. ALL UTILITY SERVICES SHALL BE COORDINATED WITH THE LOCAL UTILITY AGENCY AS PROVIDED ON THE COVER OF THE DRAWINGS.
2. ALL UTILITIES SHALL BE VERIFIED BY THE CONTRACTOR PRIOR TO DIGGING. UTILITIES MAY BE APPROXIMATE AS IDENTIFIED FROM UTILITY MAPS.
3. NEW SERVICE CONNECTIONS, METERS, AND/OR TAPS MAY REQUIRE FEES TO BE PAID DIRECTLY TO THE UTILITY FOR AVAILABILITY OF CONNECTION.
4. COORDINATE UTILITY LOADING REQUIREMENTS WITH THE MECHANICAL, ELECTRICAL, AND PLUMBING PLANS FOR THIS PROJECT.
5. YARD DRAINS SHALL BE MSD APPROVED BASIN AND GRATES.
6. CURB INLETS SHALL BE MSD APPROVED STORM MANHOLES (OR APPROVED EQUAL) WITH NENAH DOUBLE FRAME AND GRATE.

3628 VIRGINIA AVENUE
 WEST END SCHOOL INC.
 DB 9517 PG 0369
 TAX BLOCK 045G LOT 0051
 R5, TRADITIONAL NEIGHBORHOOD

RECEIVED
 JUN 30 2014
 PLANNING &
 DESIGN SERVICES

HD DS
inc.
 DESIGN • BUILD • INNOVATE

Kentucky 811 * CALL BEFORE YOU DIG "B.U.D." *
 1 (800) 752-6007

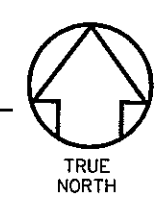
NOTE: THE LOCATION OF UTILITIES SHOWN HEREON ARE FROM OBSERVED EVIDENCE OF ABOVE GROUND APPURTENANCES ONLY. OR UTILITY MARKINGS PERFORMED BY THIRD PARTIES (BEFORE YOU DIG SERVICES AND/OR LOCATION SERVICES).

NOTE: THE CONTRACTOR SHALL FIELD VERIFY THE LOCATION AND ELEVATION OF ALL UNDERGROUND UTILITIES PRIOR TO EXCAVATION AND SHALL CONTACT THE KENTUCKY UNDERGROUND PROTECTION, INC. A MINIMUM OF TWO WORKING DAYS PRIOR TO DIGGING AT TELEPHONE 1 (800) 752-6007. NO EXCAVATION SHALL COMMENCE UNTIL ALL APPLICABLE UTILITIES HAVE BEEN CLEARED.

NOTE: PRIOR TO ANY EXCAVATION FOR UNDERGROUND UTILITIES, CONTRACTOR SHALL EXPOSE AND VERIFY LOCATIONS (HORIZONTAL AND VERTICAL) OF ALL EXISTING UTILITIES INCLUDING BUT NOT LIMITED TO GAS, WATER, AND SANITARY SEWER. ANY CONFLICTS SHALL BE REPORTED, IMMEDIATELY, TO THE ENGINEER AND THE APPROPRIATE AUTHORITIES.

UTILITY PLAN

GRAPHIC SCALE SUPERCEDES NUMERIC SCALE
 0 20' 40' 80'
 SCALE: 1" = 20'



MSD WM #8218

REVISIONS

BlueStone
 Engineers, PLLC

WEST END SCHOOL, INC.
 3628 VIRGINIA AVENUE
 LOUISVILLE, KY 40211

CHRIS CRUMPTON
 2102
 LICENSED PROFESSIONAL ENGINEER

DARRELL GRIFFITH
 ATHLETIC CENTER

UTILITY PLAN

SHEET NO. **C6**

DATE: 1-13-14
 SCALE: NTS
 DRAWN BY: CH
 CS

14VARIANCE1060