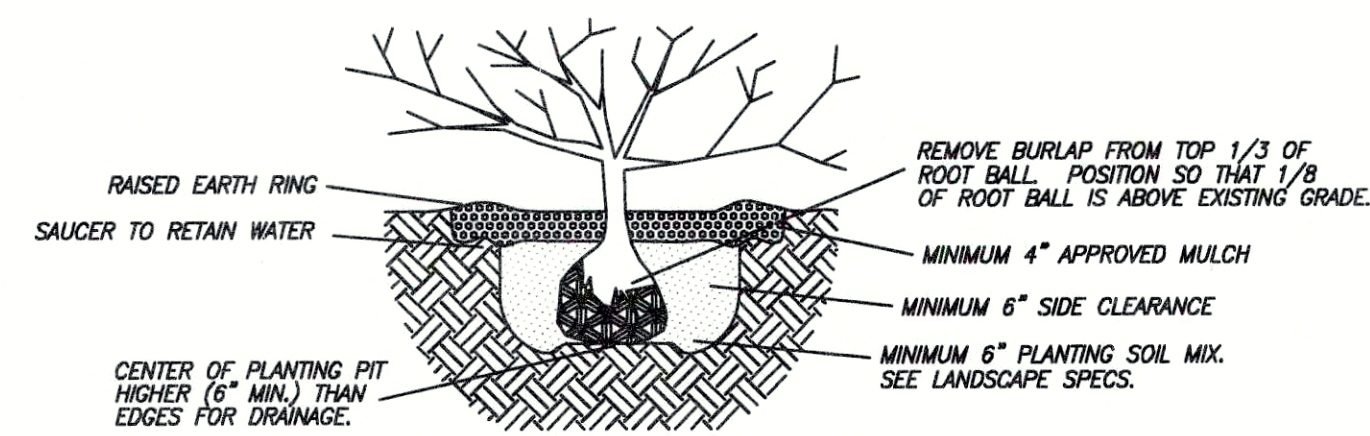


KEY	QTY.	BOTANICAL NAME	COMMON NAME	SIZE
GT	2	GLEDTISIA TRI. VAR. INERMUIS 'SKYLINE'	'SKYLINE' LOCUST	2" CAL. B&B
MV	4	MALUS X 'VELVET PILLAR'	'VELVET PILLAR' CRABAPPLE	1 3/4"-2" CAL. B&B
UP	7	ULMUS PARVIFOLIA	LACEBARK ELM	1 3/4"-2" CAL. B&B
TW	19	TAXUS X MEDIA 'WARDII'	TAXUS WARDII	24" B&B 3' O.C.
BB	9	EVONYMUS ALATUS COMPACTUS	DWARF BURNING BUSH	24" B&B 3' O.C.

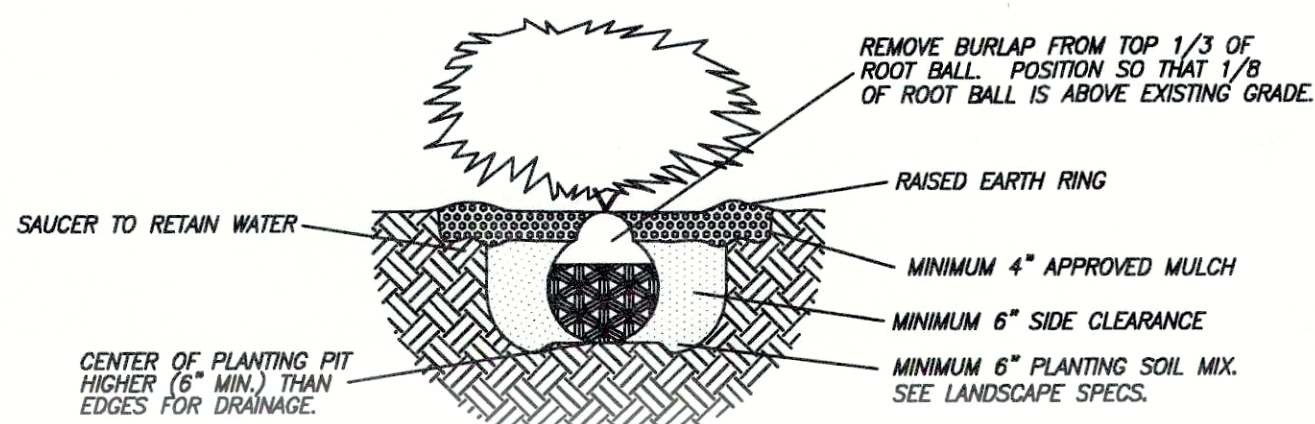
NOTE:
 -ALL PLANT MATERIAL TO MEET AND BE INSTALLED ACCORDING TO AMERICAN ASSOCIATION OF NURSERYMEN STANDARDS.
 -MULCH TO BE DOUBLE PROCESSED HARDWOOD OR BETTER.
 -SEED AND STRAW OR SOD TO BE FESCUE BLEND.
 -PLANTS AND INSTALLATION SUBJECT TO INSPECTION.
 -ALL REMAINING LBA TO BE SEED AND STRAW OR SOD.

NOTE:
 "IF WORK IS REQUIRED WITHIN THE EASEMENTS CAUSING REMOVAL OR DAMAGE OF LANDSCAPE MATERIALS, THE PROPERTY OWNER SHALL BE RESPONSIBLE FOR REPLACEMENT OF MATERIALS ACCORDING TO THE APPROVED LANDSCAPE PLAN."

NOTE:
 "CONTRACTOR SHALL INSTALL ALL LANDSCAPE BUSHES/SHRUBS NO LESS THAN 5 FEET FROM BACK OF CURB."



DECIDUOUS SHRUB PLANTING
 N.T.S.



EVERGREEN SHRUB PLANTING
 N.T.S.

LANDSCAPING SUMMARY:

VEHICULAR USE AREA	18,489 SQ.FT.
REQUIRED INTERIOR LANDSCAPING	925 SQ.FT.
PROVIDED INTERIOR LANDSCAPING	938 SQ.FT.

TEMPORARY BENCH MARK: TBM#1

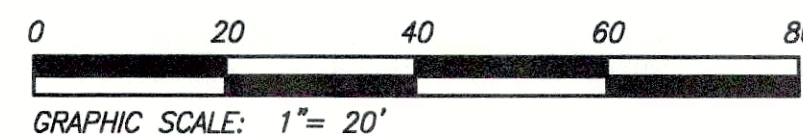
RAILROAD SPIKE IN WESTERLY SIDE OF EXISTING POWER POLE. ELEV. 470.69

UTILITY PROTECTION NOTE:

ALL UTILITIES SHOWN ON THIS PLAN ARE APPROXIMATE. INDIVIDUAL SERVICE LINES ARE NOT SHOWN. PRIOR TO ANY EXCAVATION, IT SHALL BE THE RESPONSIBILITY OF THE CONTRACTOR TO CONTACT THE UTILITY PROTECTION CENTER, BUD PHONE 1-800-752-6007, WHICH WAS ESTABLISHED TO PROVIDE ACCURATE LOCATIONS OF THE BELOW GROUND UTILITIES. THE CONTRACTOR OR SUBCONTRACTOR SHALL NOTIFY THE UTILITY PROTECTION CENTER 48 HOURS IN ADVANCE OF ANY CONSTRUCTION ON THIS PROJECT.

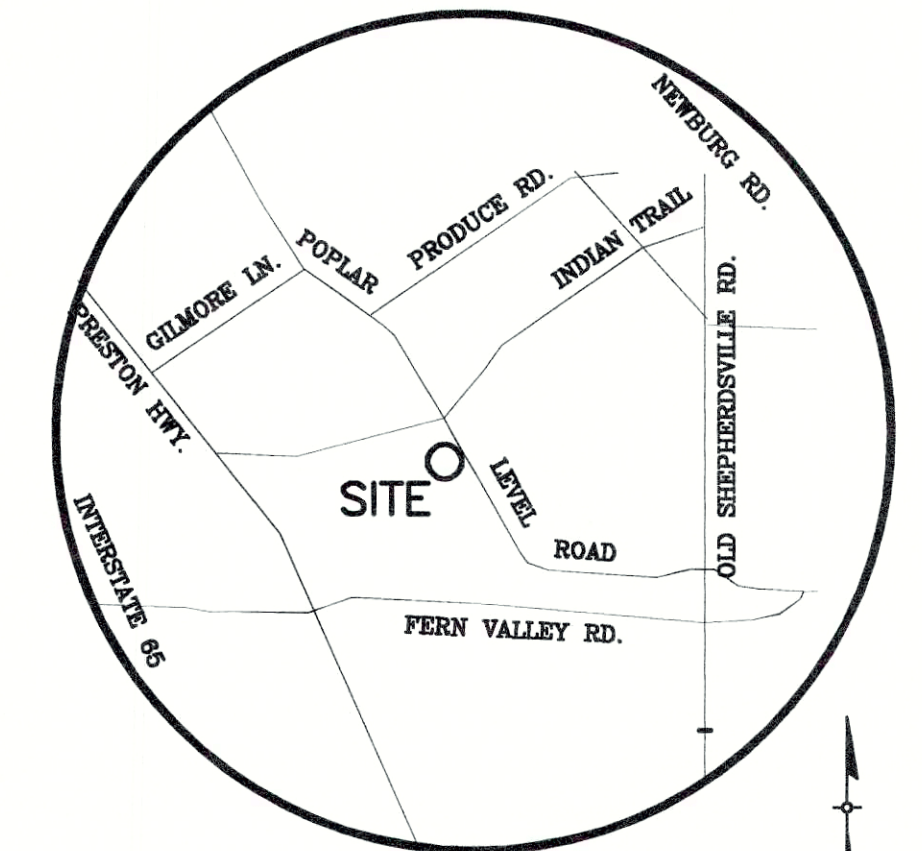
TREE PRESERVATION NOTE:

CONSTRUCTION FENCING SHALL BE ERECTED PRIOR TO ANY GRADING OR CONSTRUCTION ACTIVITIES TO PROTECT THE EXISTING TREE STANDS AND THEIR ROOT SYSTEMS FROM COMPACTION. THE FENCING SHALL ENCLOSE THE ENTIRE AREA BENEATH THE TREE CANOPY AND SHALL REMAIN IN PLACE UNTIL ALL CONSTRUCTION IS COMPLETED. NO PARKING, MATERIAL STORAGE, OR CONSTRUCTION ACTIVITIES ARE TO BE PERMITTED WITHIN THESE PROTECTED AREAS.

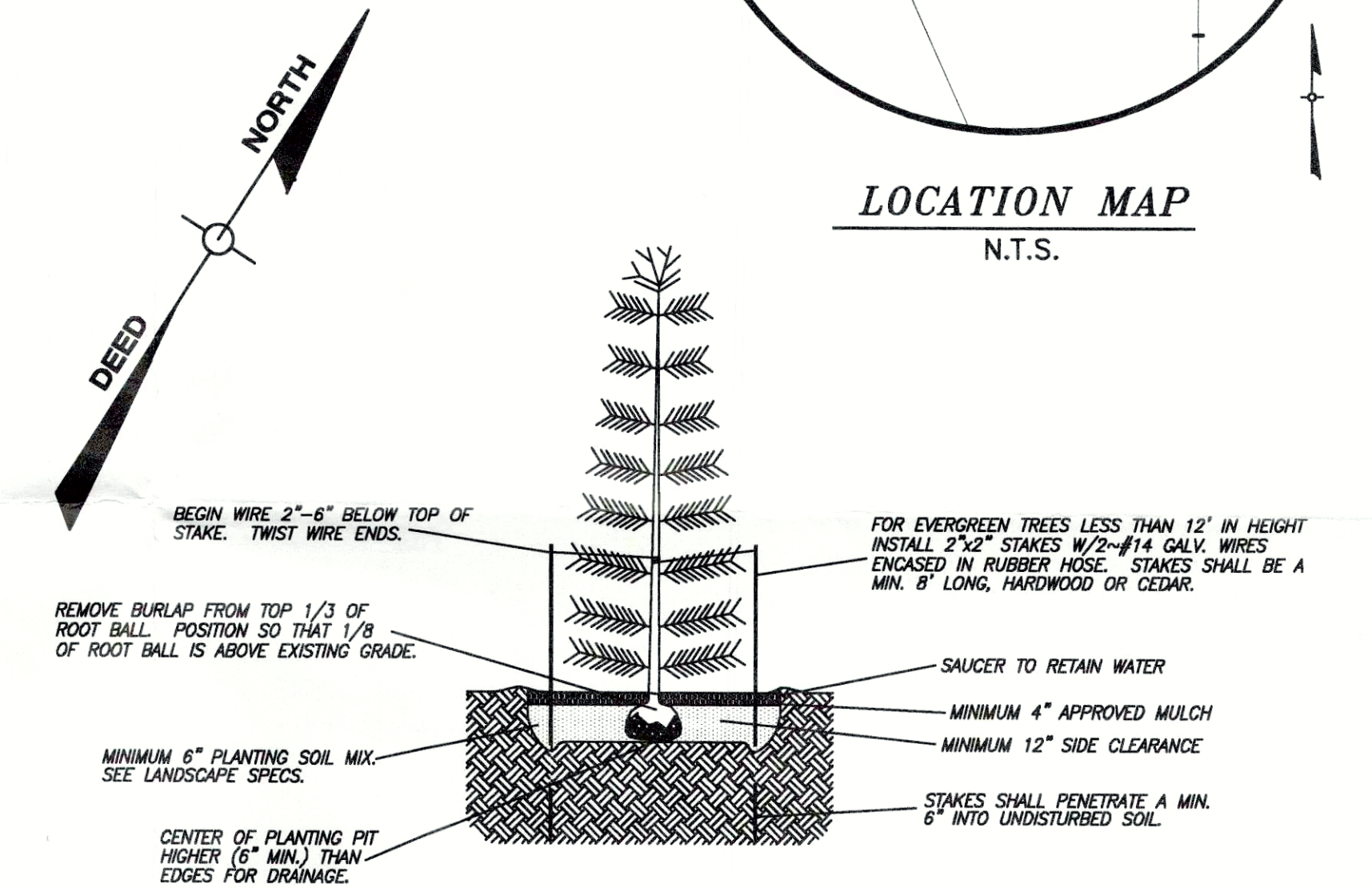
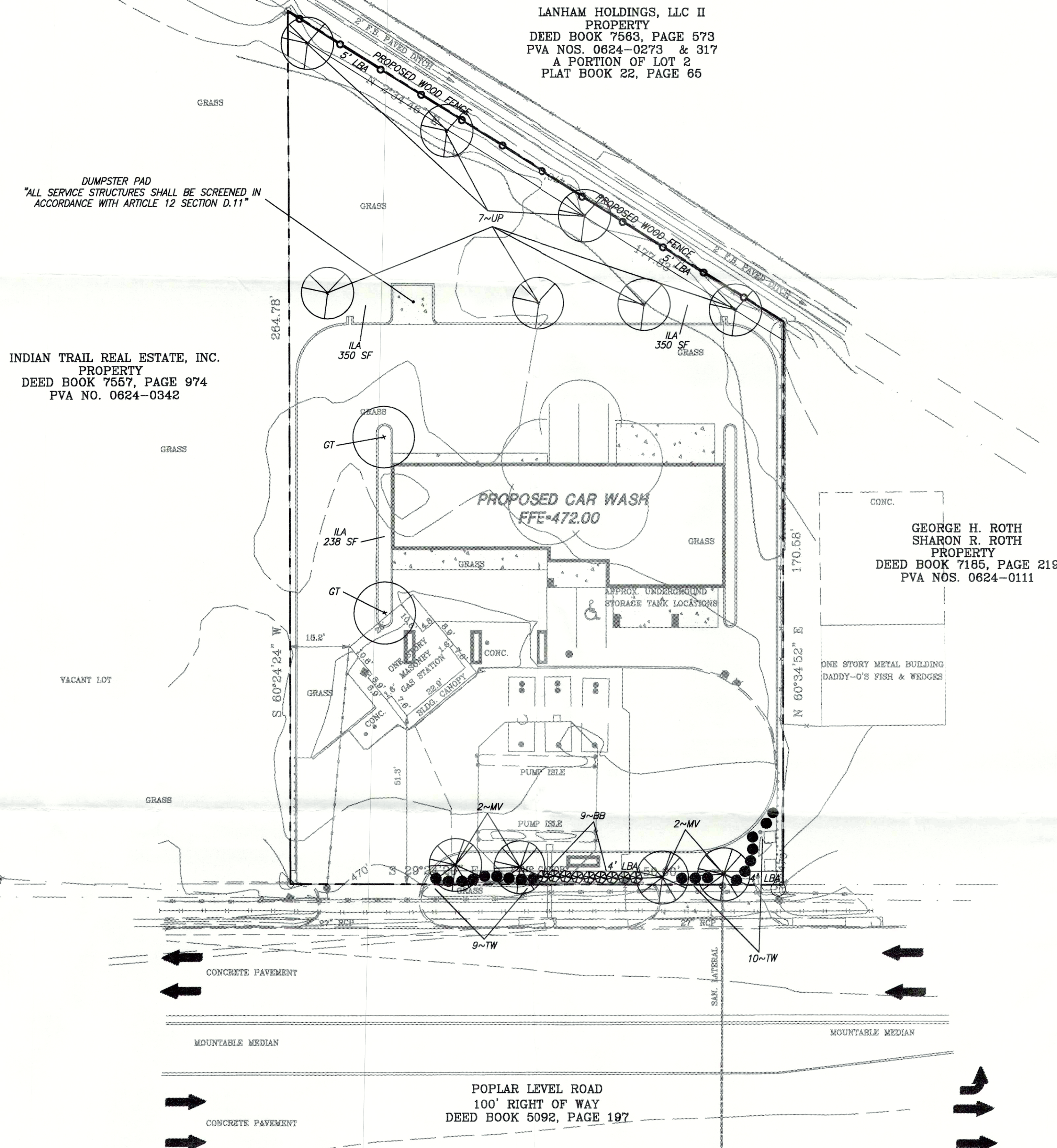


PARKING SUMMARY:

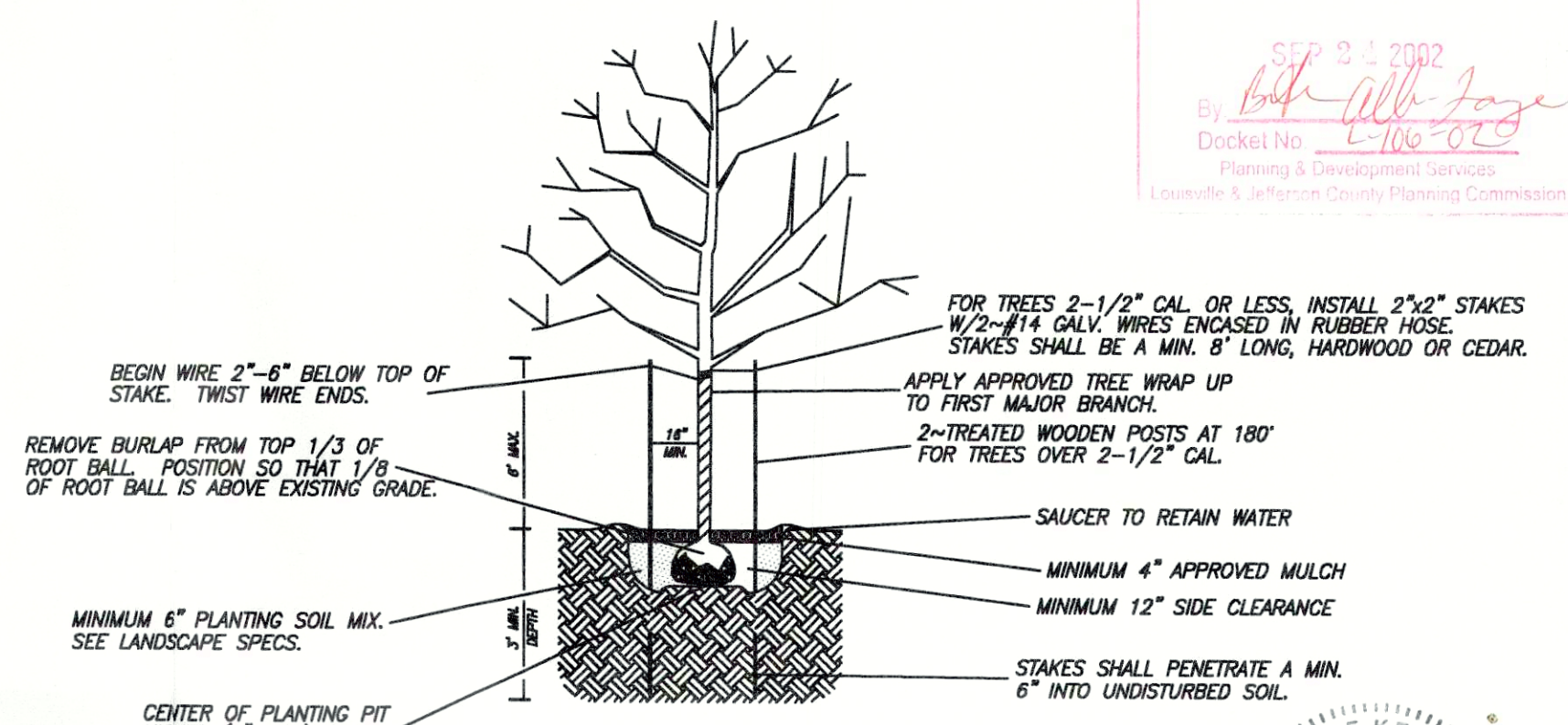
PARKING SPACES REQUIRED ----- 20
 PARKING SPACES PROVIDED ----- 24 INCL. 1 HC



LOCATION MAP
 N.T.S.



EVERGREEN TREE PLANTING
 N.T.S.



DECIDUOUS TREE PLANTING
 N.T.S.



LEGEND

○ IFF	MONUMENT AS DESCRIBED	--- GM ---	GAS MAIN
○ PKF	PARKER-KALON NAIL FOUND	●	EXISTING POLE
○ IPS	1" DIAMETER STEEL PIPE WITH ALUMINUM CAP STAMPED "2852"	●	TELEPHONE POLE
○ MAG	MAG NAIL SET WITH BRASS WASHER STAMPED "2852"	○	POLE ANCHOR
■	CROSS CHISELED CROSS OR TEE FOUND	○	TREE/SHRUB
○	LIGHT POLE	○	MONITORING WELL
○	SANITARY/STORM MANHOLE	○	WATER METER
○	POWER POLE	---	BURIED TELEPHONE/FIBER OPTIC
○	FIRE HYDRANT	---	GUARDRAIL
---	GRAVITY SANITARY SEWER LINE / STORM SEWER	---	OVERHEAD UTILITY LINE
---	WATER LINE	---	INTERIOR PROPERTY LINE
---	WATER VALVE	---	FO --- UNDERGROUND FIBER OPTIC LINE
H	PHYSICALLY CHALLENGED PARKING SPACE	---	E --- UNDERGROUND ELECTRIC LINE
		●	BOLLARD

'LANDSCAPE PLAN'
 FOR
 BRAD SAYLOR CAR WASH

4910 POPLAR LEVEL ROAD
 LOUISVILLE, KENTUCKY 40219

BLOMQUIST-DESIGN GROUP, LLC
 10529 TIMBERWOOD CIRCLE SUITE "E"
 LOUISVILLE, KENTUCKY 40223
 PHONE: 429.0105 FAX: 429.6861
 EMAIL: MARVBDG@AOL.COM

REVISIONS	SCALE: 1" = 20'
	DRWN: MAB
	CKD: MAB
	DATE: SEPT. 23, 2002

NO. C-5
 SHEETS IN SET 5