



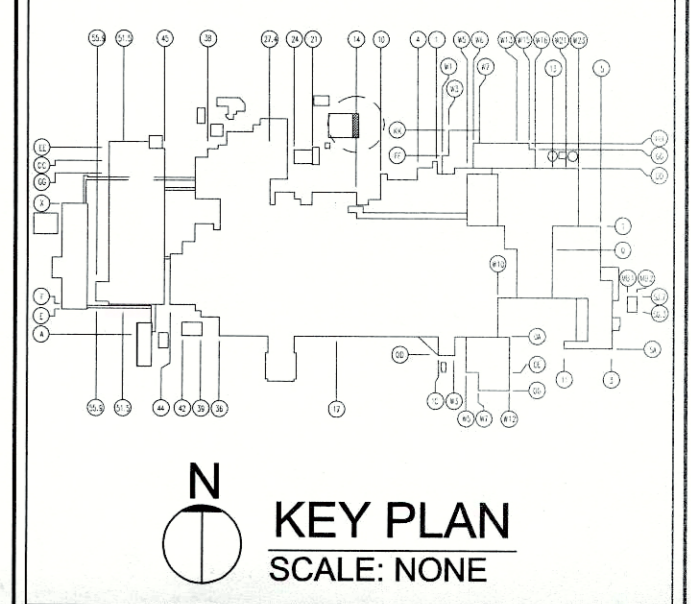
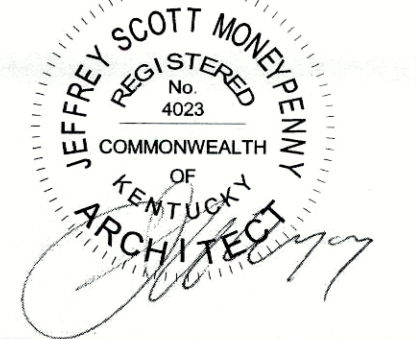
KENTUCKY TRUCK PLANT
LOUISVILLE, KENTUCKY

GENERAL STORES
ADDITION

[smart design]™
Luckett & Farley
Architecture | Engineering | Interior Design

737 South Third Street, Louisville, Kentucky 40202-2100
502.585.4181 502.587.0488 Fax www.luckett-farley.com

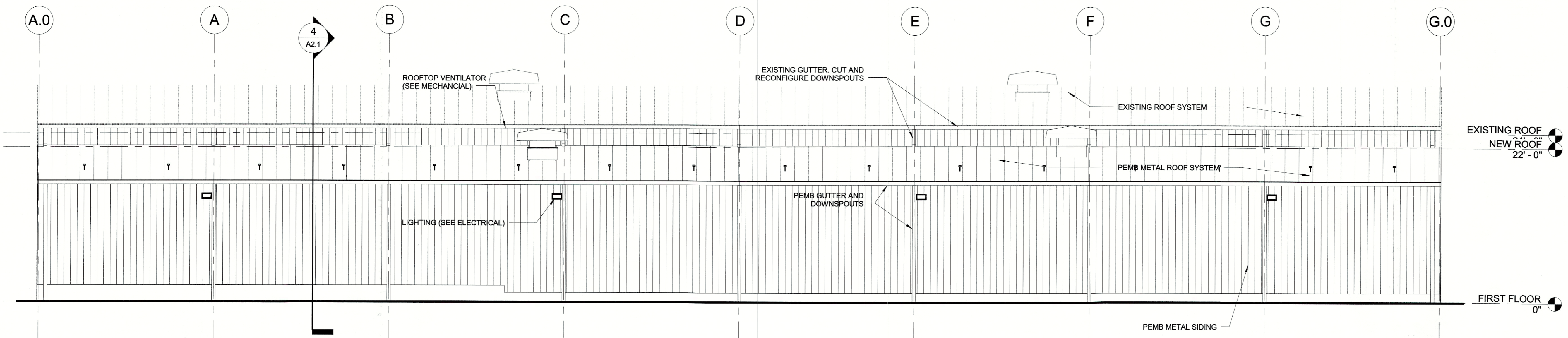
SEAL



REVISIONS

#	DESCRIPTION	DATE

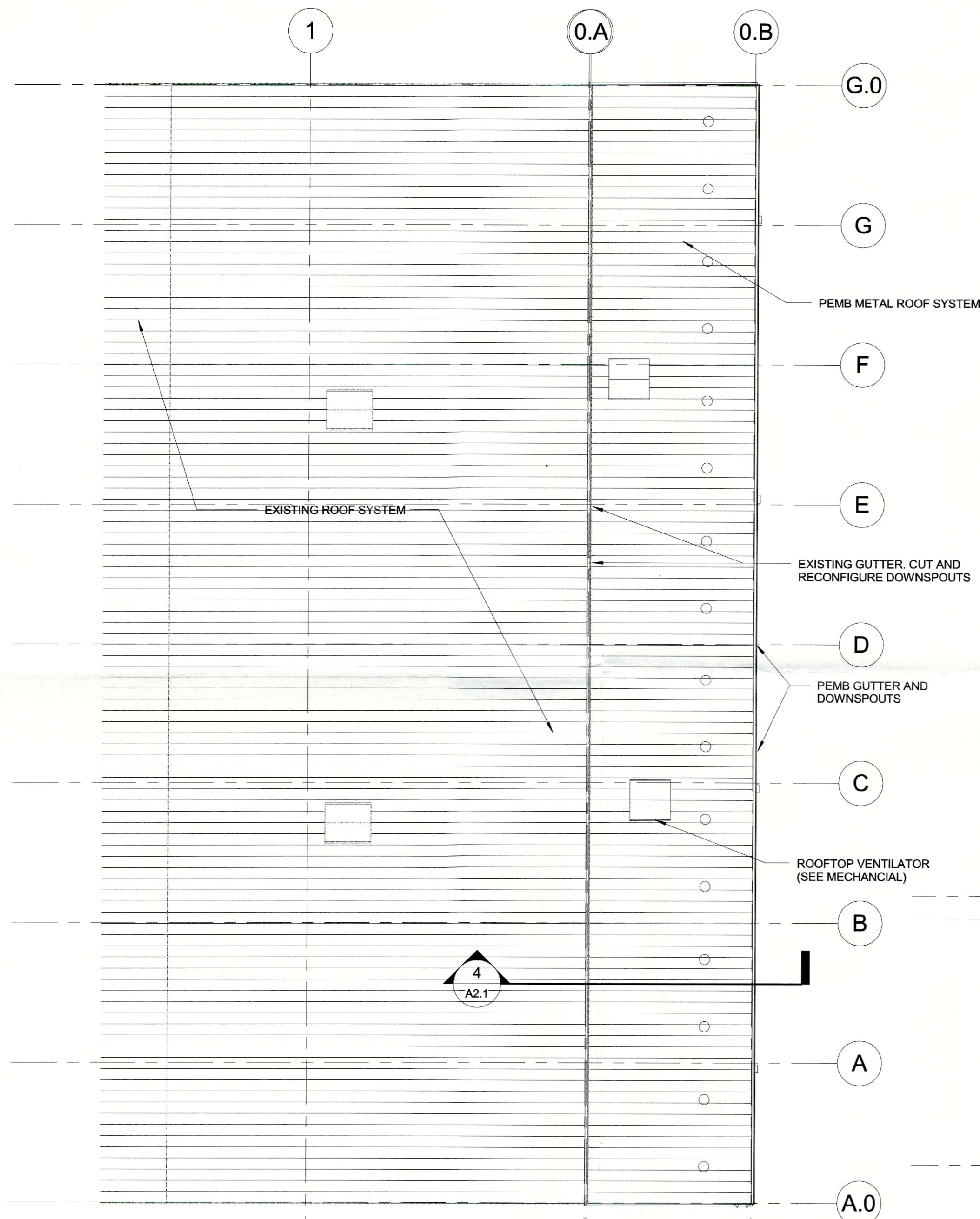
AVE COMMISSION NO. 2017.072
 DATE: 04/18/2017
 DRAWN BY: SSG
 DESIGNED BY: SSG
 CHECKED BY: JSM
 APPROVED BY: _____
 SHEET TITLE:
ELEVATIONS, SECTION AND ROOF PLAN
 SHEET NO. **A2.1**



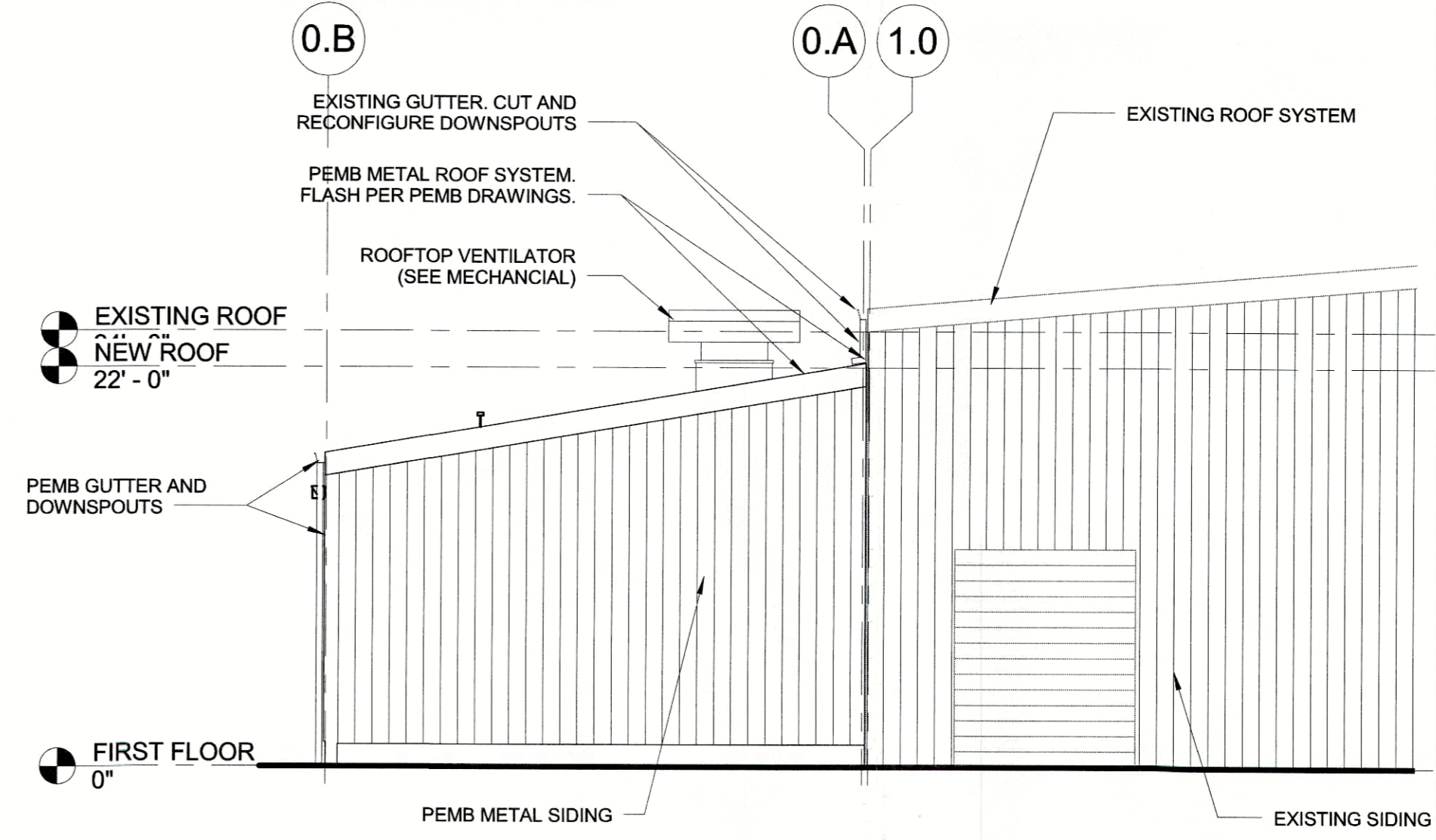
1 EAST ELEVATION
A1.1 SCALE: 1/8" = 1'-0"

GENERAL NOTES

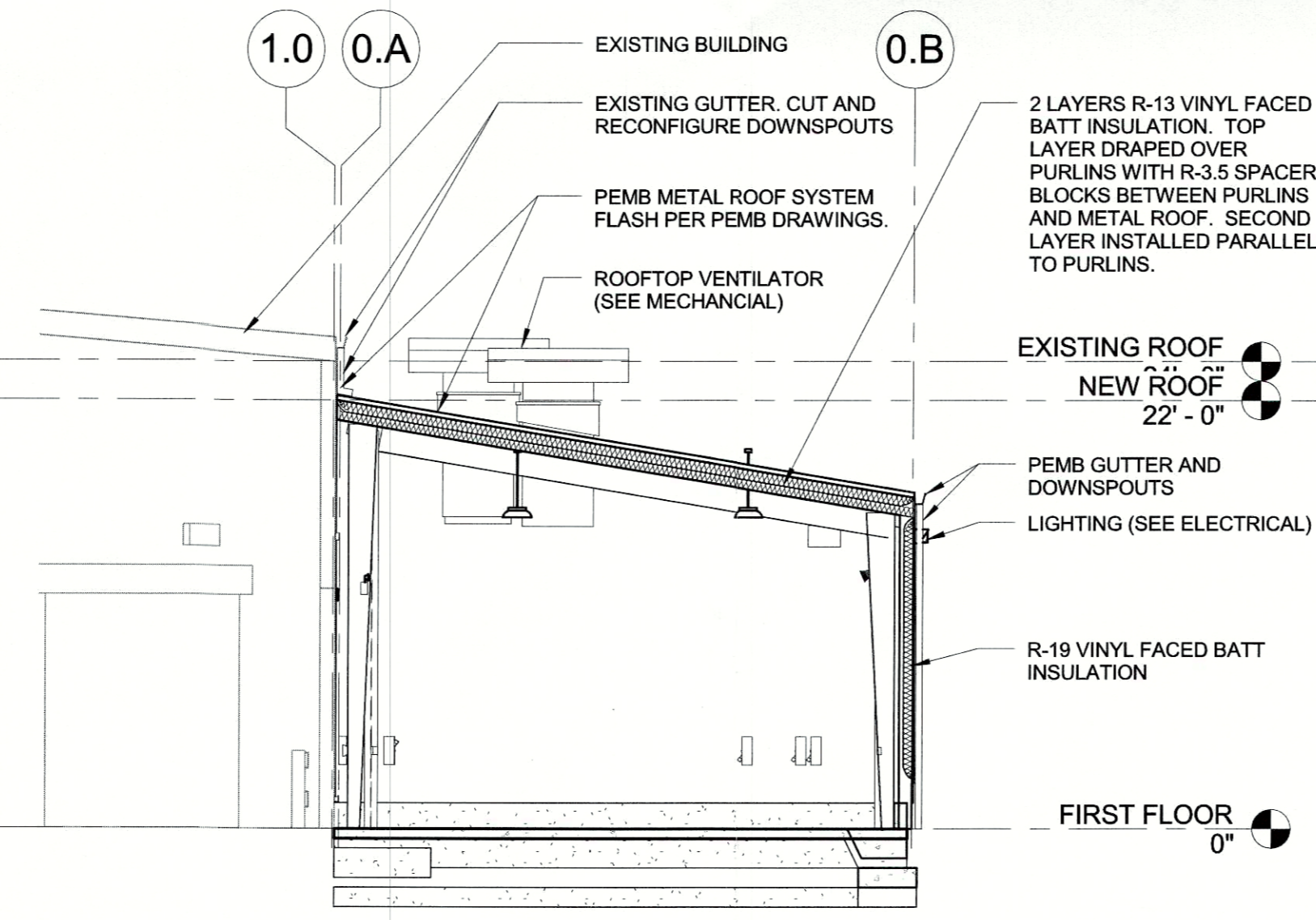
A. REFER TO KIRBY PRE-ENGINEERED METAL BUILDING DRAWINGS FOR ADDITIONAL INFORMATION.



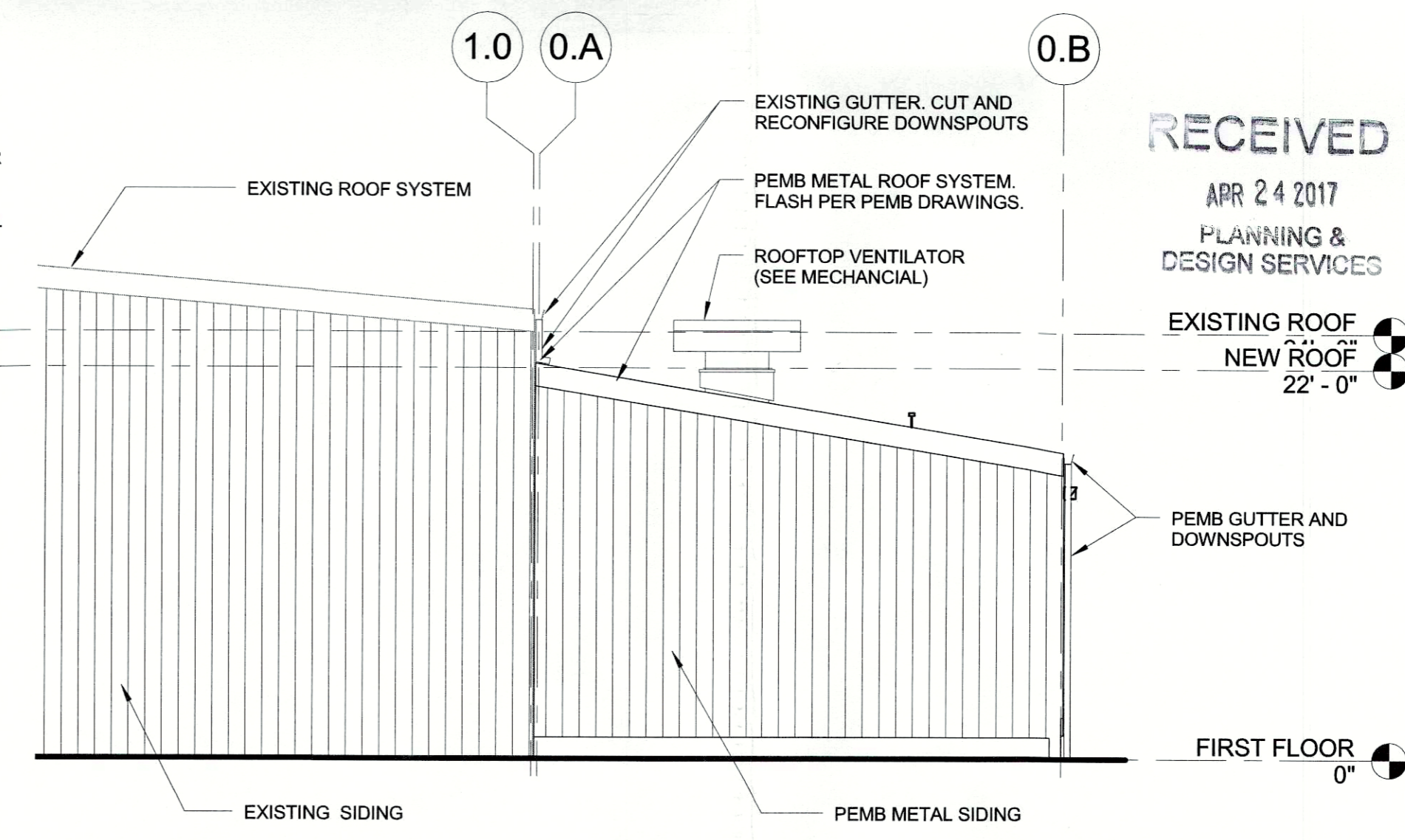
ROOF PLAN-GENERAL STORES ADDITION
SCALE: 1/16" = 1'-0"



2 NORTH ELEVATION
A1.1 SCALE: 1/8" = 1'-0"



4 BUILDING SECTION
A1.1 SCALE: 1/8" = 1'-0"



3 SOUTH ELEVATION
A1.1 SCALE: 1/8" = 1'-0"

FINAL OWNER REVIEW

C:\Users\Auliasave\2017.072_General Stores Addition_Arch\2016_sgsdshen482.rvt 4/24/2017 12:05:21 PM