

CERTIFICATION OF SURPLUS PROPERTY

The Director of the Department of Community Services and Revitalization of Louisville/Jefferson County Metro Government has carefully reviewed the Louisville/Jefferson County Metro Government's needs for land or improvements used in the administration of Metro Government's needs for land or improvements used in the administration of Metro programs and to conduct municipal business. This office has determined that the parcel of real property identified below owned by Louisville/Jefferson County Metro Government as the successor to the Jefferson County, Kentucky and which is being scheduled for action by the Louisville Metro Council, is not needed or suitable for any specific municipal use.

Property described in Exhibit A, attached hereto, known as Otter Creek Park.



Virginia Peck,

Director

Department of Community Services and  
Revitalization of Louisville/Jefferson County  
Metro Government

**--EXHIBIT A--**  
**DONATION with restrictions - 2180.107 acres**

**OTTER CREEK OUTDOOR RECREATION AREA**

**USA DONATIONS LANDS**

The herein described land is located in Meade County, Kentucky, situated south of the Ohio River, west of Otter Creek and the Fort Knox Military Reservation, north of KY 1638, and east and north of KY 1238 (Rock Ridge- Rock Haven Road).

The herein described property is the result of an actual field survey performed by GRW Engineers, Inc./GRW Aerial Surveys, Inc. between October 2010 and February 2011 for the Commonwealth of Kentucky, Finance and Administration Cabinet, Department for Facilities and Support Services and the Department of Fish and Wildlife Resources, Titled as "RFP-430, Otter Creek Park – Survey", Document ID Number "PON2 785 1100001420 1".

All set property corners described herein are 5/8-inch steel rebar 18-inches in length with a yellow plastic cap stamped "E. Rinehart KY-LS-2283" set at ground level. Major corners have an orange fiberglass witness post set vertically nearby with an attached label showing the Kentucky Fish and Wildlife Resources stamp and "Survey Marker" printed vertically. All exterior property lines have marked trees which are painted with yellow stripes and have attached metal ownership identification signs. The Ohio River and Otter Creek have witness corners set at spacing intervals no greater than 1000-feet.

**SEE THE ACCOMPANYING PLAT SET FOR LOCATION DETAILS IDENTIFIED IN THE FOLLOWING DESCRIPTIONS.**

**OTTER CREEK OUTDOOR RECREATION AREA - USA DONATION LANDS - TRACT 1 (RESTRICTED)**

Beginning on the east side of Otter Creek, near the southwest corner of the Garnettsville Cemetery, in the north right-of-way line of KY 1638, at a set rebar and cap, having Kentucky One Zone State Plane Coordinates of N: 3,859,695.71, E: 4,840,509.68 and witnessed by a found standard KTC right-of-way concrete monument bearing South 75°31'20" West a distance of 4.98 feet, the True Point of Beginning;

Thence with the north right-of-way of KY 1638 for twenty-two (22) calls, as developed from field measurements and Commonwealth of Kentucky, Department of Highways, Plans of Proposed Project, Meade County, Kentucky, Brandenburg-Muldraugh Road (KY.1638), Project RS 5092(4), dated 9-29-89, Sheets 7-13, as prepared by Booker & Associates :

1. North 64°49'55" West a distance of 553.83 feet to a set rebar and cap located on the west side of Otter Creek;
2. Thence South 80°43'43" West a distance of 225.89 feet to a set rebar and cap, witnessed by a found right-of-way concrete monument bearing North 73°09'46" West a distance of 3.93 feet;
3. Thence North 67°16'58" West a distance of 200.56 feet to a set rebar and cap, witnessed by a found right-of-way concrete monument bearing North 78°41'22" West a distance of 5.24 feet;

**--EXHIBIT A--**  
**DONATION with restrictions - 2180.107 acres**

4. Thence North 19°08'26" West a distance of 82.01 feet to a set rebar and cap, witnessed by a found right-of-way concrete monument bearing South 77°48'41" West a distance of 4.19 feet;
5. Thence North 77°16'57" West a distance of 50.25 feet to a set rebar and cap, witnessed by a found right-of-way concrete monument bearing North 85°04'53" West a distance of 7.61 feet;
6. Thence South 77°27'51" West a distance of 174.93 feet to a set rebar and cap, witnessed by a found right-of-way concrete monument bearing North 55°11'37" West a distance of 4.12 feet;
7. Thence North 65°23'20" West a distance of 603.51 feet to a set rebar and cap;
8. Thence North 82°52'35" West a distance of 203.55 feet to a set rebar and cap;
9. Thence North 71°06'57" West a distance of 297.18 feet to a set rebar and cap;
10. Thence North 72°41'57" West, crossing the centerline of the entrance road to Otter Creek Outdoor Recreation Area and Camp Piomingo (formerly KY 3241, released in DB 310, PG 67), at a distance of 163.61 feet, and entering the lands conveyed in Deed Book 133/Page 164, continuing a total distance of 248.83 feet to a set rebar and cap, witnessed by a found right-of-way concrete monument bearing North 55°11'37" West a distance of 4.12 feet;
11. Thence North 66°12'52" West a distance of 248.35 feet to a set rebar and cap;
12. Thence North 61°38'28" West a distance of 545.95 feet to a set rebar and cap;
13. Thence North 58°49'25" West a distance of 445.47 feet to a set rebar and cap;
14. Thence North 56°20'55" West a distance of 250.20 feet to a set rebar and cap;
15. Thence North 60°54'05" West a distance of 250.45 feet to a set rebar and cap;
16. Thence North 55°10'38" West a distance of 250.20 feet to a set rebar and cap;
17. Thence North 57°28'04" West a distance of 1100.00 feet to a set rebar and cap;
18. Thence North 59°45'30" West a distance of 250.20 feet to a set rebar and cap;
19. Thence North 56°38'58" West a distance of 350.04 feet to a set rebar and cap;
20. Thence North 54°35'53" West a distance of 203.33 feet to a set rebar and cap, witnessed by a found right-of-way concrete monument bearing North 10°04'28" East a distance of 4.06 feet;
21. Thence North 58°00'47" West a distance of 850.51 feet to a set rebar and cap;
22. Thence North 21°29'41" East a distance of 20.33 feet to a set rebar and cap (N: 3,862,940.98, E: 4,834, 040.79), located in the southeast corner of Lamon Napper, Jr. property (DB461, PG624);

Thence leaving the KY 1638 north right-of-way line and running with the east line of Napper, North 25°40'08" East a distance of 315.22 feet to a found rebar and cap with stamped LS 3383, located in the southeast corner of Beatrice Heil (DB 536, PG 23);

Thence with the east line of Heil, North 25°06'16" East a distance of 434.39 feet to a found rebar and cap with stamped LS 3383, located in the northeast corner of Sandra Myers (DB 528, PG 215) and the southeast corner of Gary P. Darnell (DB 514, PG 282 & DB 402, PG 288);

Thence with the east line of Gary P. Darnell, North 25°15'04" East a distance of 785.35 feet to a found rebar and cap stamped with LS 2378, located at the southeast corner of Mary Lou Sullivan (DB 402, PG 292);

**--EXHIBIT A--**  
**DONATION with restrictions - 2180.107 acres**

Thence with the east line of Mary Lou Sullivan, North 25°21'46" East a distance of 369.02 feet to a found 6" x 6" concrete monument with metal disk and no stamping (N: 3,864, 680.91, E: 4,834, 862.08), located at the northeast corner of Sullivan;

Thence with the north line of Mary Lou Sullivan, North 36°58'01" West, passing a set rebar and cap at 388.59, also passing a double gas transmission line, a total distance of 1281.96 feet to a found rebar and cap stamped LS 2378 (N: 3,865,705.05, E: 4,834,091.25), located in the eastern 30-foot right-of-way line of KY 1238, being 15-feet each side of centerline, also known as Rock Ridge-Rock Haven Road;

Thence leaving the lands conveyed in Deed Book 133/Page 164 and running with the eastern 30-foot right-of-way line of KY 1238 or Rock Ridge-Rock Haven Road for twenty-seven (27) calls:

1. North 39°12'11" East a distance of 601.28 feet to a set rebar and cap;
2. Thence North 33°52'24" East a distance of 36.54 feet to a set rebar and cap;
3. Thence with a curve turning to the left with an arc length of 80.23', with a radius of 54.73', with a chord bearing of North 02°40'51" West, and a chord length of 73.23', to a set rebar and cap;
4. Thence North 57°58'13" West a distance of 36.92 feet to a set rebar and cap;
5. Thence North 65°46'41" West a distance of 356.46 feet to a set rebar and cap;
6. Thence with a curve turning to the right with an arc length of 111.17', with a radius of 534.28', with a chord bearing of North 56°35'32" West, with a chord length of 110.97', to a set rebar and cap;
7. Thence North 49°00'17" West a distance of 65.60 feet to a set rebar and cap;
8. Thence North 44°25'11" West a distance of 375.12 feet to a set rebar and cap;
9. Thence North 44°51'26" West a distance of 286.05 feet to a set rebar and cap;
10. Thence with a curve turning to the right with an arc length of 113.76', with a radius of 200.90', with a chord bearing of North 30°22'13" West, with a chord length of 112.25', to a set rebar and cap;
11. Thence North 09°03'30" West a distance of 51.40 feet to a set rebar and cap;
12. Thence North 02°50'29" West a distance of 64.32 feet to a set rebar and cap;
13. Thence North 04°33'31" West a distance of 248.67 feet to a set rebar and cap;
14. Thence with a curve turning to the left with an arc length of 161.63', with a radius of 490.37', with a chord bearing of North 17°03'17" West, with a chord length of 160.90', to a set rebar and cap;
15. Thence North 24°18'06" West a distance of 128.21 feet to a set rebar and cap;
16. Thence with a curve turning to the right with an arc length of 120.85', with a radius of 465.24', with a chord bearing of North 14°22'17" West, with a chord length of 120.51', to a set rebar and cap;
17. Thence with a compound curve turning to the right with an arc length of 95.04', with a radius of 265.78', with a chord bearing of North 00°07'31" East, with a chord length of 94.53', to a set rebar and cap;

**--EXHIBIT A--**  
**DONATION with restrictions - 2180.107 acres**

18. Thence with a compound curve turning to the right with an arc length of 72.12', with a radius of 198.83', with a chord bearing of North 33°29'56" East, with a chord length of 71.72', to a set rebar and cap;
19. Thence North 38°34'04" East a distance of 73.32 feet to a set rebar and cap;
20. Thence with a curve turning to the left with an arc length of 189.99', with a radius of 608.25', with a chord bearing of North 29°38'16" East, with a chord length of 189.22', to a set rebar and cap;
21. Thence North 24°35'25" East a distance of 215.38 feet to a set rebar and cap;
22. Thence North 18°40'19" East a distance of 43.46 feet to a set rebar and cap, located on the east side of an abandoned road intersection heading northeastward;
23. Thence with a curve turning to the left with an arc length of 80.20', with a radius of 85.62', with a chord bearing of North 12°24'25" West, with a chord length of 77.30', to a set rebar and cap;
24. Thence with a compound curve turning to the left with an arc length of 75.17', with a radius of 156.15', with a chord bearing of North 50°24'48" West, with a chord length of 74.45', to a set rebar and cap, located on the west side of an abandoned road intersection heading northeastward;
25. Thence North 64°06'54" West a distance of 95.01 feet to a set rebar and cap, located near an old abandoned church;
26. Thence North 57°08'58" West a distance of 90.93 feet to a set rebar and cap;
27. Thence North 52°45'10" West a distance of 45.16 feet to a set rebar and cap, located at the southeast corner of the Rock Haven Baptist Church Cemetery property, which was conveyed to the United States of America (DB71, Pg 524) ;

Thence following the northeastern road right-of-way line for five (5) calls:

1. North 39°05'04" West a distance of 186.25 feet to a set rebar and cap;
2. Thence North 37°29'38" West a distance of 90.48 feet to a set rebar and cap;
3. Thence North 42°07'18" West a distance of 45.85 feet to a set rebar and cap;
4. Thence North 42°38'13" West a distance of 117.67 feet to a set rebar and cap;
5. Thence North 45°44'12" West a distance of 97.77 feet to a found rebar and cap stamped LS 2378, located at the southeast corner of the Rock Haven Methodist Church-Woolrich Cemetery (DB 447, PG 151);

Thence with the east line of the cemetery, North 54°27'47" East a distance of 296.20 feet to a found rebar and cap stamped LS 2378, the northeast corner of said cemetery;

Thence with the north line of the cemetery, North 45°01'26" West a distance of 259.69 feet to a found rebar and cap stamped LS 2378, the northwest corner of said cemetery;

Thence with the west line of the cemetery, South 54°36'11" West a distance of 108.33 feet to a found rebar and cap stamped LS 2378, a corner along the west line of said cemetery;

**--EXHIBIT A--**  
**DONATION with restrictions - 2180.107 acres**

Thence continuing with the west line of the cemetery, South 54°01'49" West a distance of 196.34 feet to a found rebar and cap stamped LS 2378, located in the KY 1238 and the aforementioned Rock Ridge-Rock Haven Road northeastern right-of-way line;

Thence following the northeastern road right-of-way line for five (5) calls:

1. North 46°37'20" West a distance of 427.05 feet to a set rebar and cap;
2. Thence North 46°26'33" West a distance of 433.23 feet to a set rebar and cap;
3. Thence North 45°53'30" West a distance of 293.40 feet to a set rebar and cap;
4. Thence North 45°25'42" West a distance of 310.72 feet to a set rebar and cap;
5. Thence North 45°36'38" West a distance of 368.22 feet to a set MagNail (N: 3,870,570.41, E: 4,831,456.54), located in the east right-of-way line of Fern Cliff Road;

Thence following the eastern 30-foot right-of-way line of Fern Cliff Road being 15-feet each side of centerline for three (3) calls:

1. North 47°17'42" East a distance of 128.88 feet to a set rebar and cap;
2. Thence North 56°13'34" East a distance of 168.54 feet to a set rebar and cap;
3. Thence North 51°43'52" East a distance of 155.86 feet to a set rebar and cap;

Thence following the widened eastern 60-foot right-of-way line of Fern Cliff Road for four (4) calls:

1. South 41°00'39" East a distance of 15.00 feet to a set rebar and cap;
2. Thence North 54°01'09" East a distance of 155.10 feet to a set rebar and cap;
3. Thence North 48°09'54" East a distance of 38.92 feet to a set rebar and cap;
4. Thence North 42°19'07" East a distance of 236.61 feet to a set rebar and cap, a corner to the Richey Tract (DB112, Pg93);

Thence leaving the widened eastern 60-foot right-of-way line of Fern Cliff Road and running with the Richey Tract line, North 57°37'20" East a distance of 653.40 feet to a found concrete monument, located in the southwest line of George T. Thomas (DB 276, PG 283);

Thence continuing with the southwest line of Thomas, South 46°46'11" East a distance of 136.79 feet to a found concrete monument (N: 3,871,384.87, E: 4,832,788.69), the southeast corner of Thomas;

Thence with a southeasterly line of Thomas, North 58°59'46" East a distance of 551.48 feet to a found concrete monument, a corner to the City of Louisville, the Patterson Area – Tract 1 (DB69, Pg 537);

Thence southeasterly with the line of the City of Louisville (Patterson Area 1) for two (2) calls:

1. South 19°20'49" East a distance of 244.96 feet to set rebar and cap;
2. South 33°57'55" East a distance of 300.78 feet to a point in the creek, being west of the Rock Haven Valley access road, a corner to the City of Louisville-Van Buren Tract (DB70, Pg 49);

**--EXHIBIT A--**  
**DONATION with restrictions - 2180.107 acres**

Thence with the City of Louisville-Van Buren Tract (DB70, Pg 49) for four (4) calls:

1. South 15°01'58" East a distance of 298.10 feet to set rebar and cap;
2. South 15°46'58" East a distance of 170.20 feet to set rebar and cap;
3. North 52°10'02" East a distance of 109.50 feet to a set rebar and cap;
4. North 09°28'43" West a distance of 414.20 feet to a found concrete monument, a corner to the City of Louisville, the Patterson Area – Tract 1 (DB69, Pg 537);

Thence northeasterly with the line of the City of Louisville (Patterson Area 1) for two (2) calls:

3. North 70°09'02" East a distance of 115.76 feet to a set rebar and cap;
4. North 22°32'02" East a distance of 735.71 feet to a set rebar and cap (N: 3,872,379.27 E: 4,833,976.08) located in the south 30-foot CSX Railway right-of-way near Station 1290+00, located west of the paved River Road railroad crossing ;

Thence following the south 30-foot railroad right-of-way for five (5) calls:

1. A curve turning to the left with an arc length of 122.32', with a radius of 1462.69', with a chord bearing of South 63°56'04" East, with a chord length of 122.29', to a set rebar and cap,
2. Thence South 66°19'49" East, passing a set rebar and cap at a distance of 641.60 feet a total distance of 1283.20 feet to a set rebar and cap;
3. Thence with a curve turning to the left with an arc length of 635.57', with a radius of 4943.26', with a chord bearing of South 70°00'49" East, with a chord length of 635.13', to a set rebar and cap;
4. Thence South 73°41'49" East a distance of 222.20 feet to a set rebar and cap;
5. Thence a curve turning to the left having an arc length of 292.57', with a radius of 1666.79', with a chord bearing of South 78°43'32" East, with a chord length of 292.20', to a set rebar and cap in the south 30-foot railroad right-of-way at Station 1266+61;

Thence leaving the South 30-foot right-of-way line, South 13°50'11" West a distance of 166.33 feet to a set rebar and cap on the ridge;

Thence along the ridge for thirteen (13) calls:

1. North 84°39'36" East a distance of 24.89 feet to a set rebar and cap;
2. Thence South 64°50'24" East a distance of 108.00 feet to a set rebar and cap;
3. Thence South 70°20'24" East a distance of 22.00 feet to a set rebar and cap;
4. Thence South 57°20'24" East a distance of 131.00 feet to a set rebar and cap;
5. Thence North 76°09'36" East a distance of 65.00 feet to a set rebar and cap;
6. Thence North 79°56'07" East a distance of 83.61 feet to a set rebar and cap;
7. Thence South 83°09'46" East a distance of 67.42 feet to a found concrete monument;
8. Thence North 84°24'36" East a distance of 200.00 feet to a set rebar and cap;
9. Thence South 81°20'24" East a distance of 200.00 feet to a set rebar and cap;
10. Thence North 83°39'36" East a distance of 150.00 feet to a set rebar and cap;
11. Thence North 88°39'36" East a distance of 138.50 feet to a set rebar and cap;

**--EXHIBIT A--**  
**DONATION with restrictions - 2180.107 acres**

12. Thence North 79°49'36" East a distance of 201.30 feet to a set rebar and cap;
13. Thence South 81°20'24" East a distance of 338.00 feet to a set rebar and cap;

Thence running down the ridge, South 81°20'24" East, passing a reference rebar and cap at 388.87 feet and at 642.70 feet, a total distance of 700.00 feet to a point in Otter Creek;

Thence North 24°24'26" East a distance of 360.18 feet to a found cast iron pipe (noted as stone on RR Map V1/12);

Thence North 24°24'26" West a distance of 242.95 feet to a found concrete monument;

Thence North 65°31'12" West a distance of 145.71 to a set rebar and cap located in the south 30-foot railroad right-of-way line.

Thence running with the south 30-foot railroad right-of-way line in the upstream direction of the Ohio River for five (5) calls:

1. A curve turning to the left with an arc length of 497.12', with a radius of 1714.83', with a chord bearing of North 44°22'34" East, with a chord length of 495.38', to a set rebar and cap;
2. Thence North 38°26'41" East a distance of 745.86 feet to a set rebar and cap;
3. Thence with a curve turning to the left with an arc length of 1077.25', with a radius of 5869.34', with a chord bearing of North 33°07'02" East, with a chord length of 1075.74', to a set rebar and cap;
4. Thence North 28°36'28" East a distance of 517.12 feet to a set rebar and cap;
5. Thence curve turning to the left with an arc length of 611.88', with a radius of 353730.27', with a chord bearing of North 28°30'13" East, with a chord length of 611.88' to a point located at the thread of Otter Creek in the south 30-foot railroad right-of-way line a corner to Fort Knox Military Reservation;

Thence with Fort Knox Military Reservation running upstream with the thread of Otter Creek, as determined from edge of water measurements on opposite banks, during low water in the Fall of 2010, for eighteen (18) calls:

1. South 37°01'11" East a distance of 455.72 feet to a point;
2. Thence South 19°17'52" East a distance of 240.03 feet to a point;
3. Thence South 04°38'49" West a distance of 568.91 feet to a point;
4. Thence South 11°50'09" West a distance of 216.83 feet to a point;
5. Thence South 33°54'21" East a distance of 264.52 feet to a point;
6. Thence South 86°31'41" East a distance of 155.78 feet to a point;
7. Thence North 80°46'18" East a distance of 292.58 feet to a point;
8. Thence South 46°56'02" East a distance of 88.94 feet to a point;
9. Thence South 10°23'46" East a distance of 114.44 feet to a point;
10. Thence South 02°40'59" East a distance of 491.18 feet to a point;



**--EXHIBIT A--**  
**DONATION with restrictions - 2180.107 acres**

11. Thence South 15°51'14" East a distance of 390.08 feet to a point;
12. Thence South 00°01'45" East a distance of 143.79 feet to a point;
13. Thence South 14°21'33" West a distance of 256.75 feet to a point;
14. Thence South 27°17'02" West a distance of 82.10 feet to a point;
15. Thence South 18°52'55" West a distance of 196.60 feet to a point;
16. Thence South 40°45'59" West a distance of 43.30 feet to a point;
17. Thence South 68°18'30" West a distance of 105.97 feet to a point;
18. Thence North 84°35'25" West a distance of 184.93 feet to a point, a corner to the City of Louisville Tract (DB90, Pg617);

Thence continuing with the thread of Otter Creek and said City of Louisville Tract (DB90, Pg617) for forty-seven (47) calls:

1. North 65°57'59" West a distance of 159.45 feet;
2. Thence North 53°06'17" West a distance of 490.78 feet;
3. Thence North 77°53'59" West a distance of 381.92 feet;
4. Thence South 80°50'08" West a distance of 189.25 feet;
5. Thence North 79°39'19" West a distance of 147.93 feet;
6. Thence North 66°01'02" West a distance of 329.78 feet;
7. Thence North 22°55'55" West a distance of 128.79 feet;
8. Thence North 28°07'38" East a distance of 190.58 feet;
9. Thence North 80°37'50" East a distance of 268.76 feet;
10. Thence South 88°17'32" East a distance of 159.87 feet;
11. Thence North 74°57'54" East a distance of 275.50 feet;
12. Thence North 47°35'12" East a distance of 169.29 feet;
13. Thence North 38°17'45" East a distance of 200.61 feet;
14. Thence North 05°54'39" East a distance of 155.15 feet;
15. Thence North 49°22'56" West a distance of 239.70 feet;
16. Thence North 77°38'04" West a distance of 271.96 feet;
17. Thence North 79°49'40" West a distance of 151.03 feet;
18. Thence South 83°33'58" West a distance of 200.84 feet;
19. Thence South 47°08'41" West a distance of 267.50 feet;
20. Thence South 31°44'13" West a distance of 270.94 feet;
21. Thence South 51°24'38" West a distance of 170.68 feet;
22. Thence South 27°10'49" West a distance of 85.07 feet;
23. Thence South 35°51'56" West a distance of 231.13 feet;
24. Thence South 02°55'15" East a distance of 453.09 feet;
25. Thence South 37°29'18" West a distance of 224.93 feet;
26. Thence South 64°05'45" West a distance of 389.96 feet;
27. Thence South 54°04'48" West a distance of 90.53 feet;
28. Thence South 33°50'27" West a distance of 227.99 feet;
29. Thence South 06°59'43" West a distance of 283.89 feet;

**--EXHIBIT A--**  
**DONATION with restrictions - 2180.107 acres**

30. Thence South 07°30'40" East a distance of 125.17 feet;
31. Thence South 25°59'17" East a distance of 343.48 feet;
32. Thence South 49°36'19" East a distance of 453.10 feet;
33. Thence South 35°38'25" East a distance of 114.81 feet;
34. Thence South 71°19'33" East a distance of 83.14 feet;
35. Thence North 67°16'35" East a distance of 139.48 feet;
36. Thence North 26°32'07" East a distance of 133.20 feet;
37. Thence North 44°12'07" East a distance of 147.98 feet;
38. Thence South 57°58'33" East a distance of 133.32 feet;
39. Thence South 10°20'44" West a distance of 263.39 feet;
40. Thence South 04°20'24" East a distance of 118.78 feet;
41. Thence South 32°28'10" East a distance of 302.67 feet;
42. Thence South 58°13'06" East a distance of 327.68 feet;
43. Thence South 37°46'33" East a distance of 242.72 feet;
44. Thence South 52°10'17" East a distance of 506.02 feet;
45. Thence North 81°01'24" East a distance of 144.76 feet;
46. Thence North 35°20'29" East a distance of 513.37 feet;
47. Thence South 65°20'57" East a distance of 132.61 feet, a corner to Fort Knox Military Reservation;

Thence with the line of Fort Knox Military reservation, Tract A-346 (Withers, DB 73, PG 511), upstream with the thread of Otter Creek for twenty-nine (29) calls:

1. South 46°33'53" East a distance of 241.36 feet to a point;
2. Thence South 16°05'26" East a distance of 91.93 feet to a point;
3. Thence South 01°11'59" West a distance of 256.30 feet to a point;
4. Thence South 23°29'45" West a distance of 61.68 feet to a point;
5. Thence South 84°13'03" West a distance of 61.81 feet to a point;
6. Thence North 53°13'27" West a distance of 94.18 feet to a point;
7. Thence North 68°15'35" West a distance of 91.12 feet to a point;
8. Thence North 88°01'04" West a distance of 166.30 feet to a point;
9. Thence South 51°31'25" West a distance of 162.46 feet to a point;
10. Thence South 50°45'27" West a distance of 162.74 feet to a point;
11. Thence South 36°38'17" West a distance of 76.77 feet to a point;
12. Thence South 11°49'47" West a distance of 172.49 feet to a point;
13. Thence South 01°31'59" East a distance of 55.43 feet to a point;
14. Thence South 02°52'32" West a distance of 390.56 feet to a point;
15. Thence South 68°10'53" West a distance of 42.00 feet to a point;
16. Thence South 28°57'40" West a distance of 100.62 feet to a point;
17. Thence South 44°54'24" West a distance of 89.41 feet to a point;
18. Thence South 04°44'48" East a distance of 185.93 feet to a point;
19. Thence South 76°55'09" East a distance of 156.27 feet to a point;

**--EXHIBIT A--**  
**DONATION with restrictions - 2180.107 acres**

20. Thence South 48°22'05" East a distance of 41.38 feet to a point;
21. Thence South 72°57'47" East a distance of 313.85 feet to a point;
22. Thence South 57°24'45" East a distance of 230.79 feet to a point;
23. Thence South 32°51'44" East a distance of 151.53 feet to a point;
24. Thence South 05°59'33" East a distance of 170.77 feet to a point;
25. Thence South 07°53'21" West a distance of 129.74 feet to a point;
26. Thence South 08°20'20" East a distance of 64.21 feet to a point;
27. Thence South 14°15'15" West a distance of 150.69 feet to a point;
28. Thence South 41°04'14" West a distance of 60.80 feet to a point;
29. Thence South 89°56'19" West a distance of 158.62 feet to a point;

Thence leaving the thread of Otter Creek, South 19°15'25" East a distance of 127.02 feet to a set rebar and cap, located on the east side of Otter Creek;

Thence following the Fort Knox Military Reservation Tract A-253 (Reeser, DB 72, PG 17) for ten (10) calls:

1. South 78°49'37" West a distance of 340.10 feet to a set rebar and cap;
2. Thence South 25°57'35" West a distance of 509.20 feet to a set rebar and cap;
3. Thence South 34°55'34" West a distance of 567.20 feet to a set rebar and cap;
4. Thence South 81°52'55" East a distance of 306.20 feet to a set rebar and cap;
5. Thence North 57°07'16" East a distance of 110.82 feet to a found concrete monument (N: 3,865,449.34, E: 4,840,592.95);
6. Thence North 55°40'17" East a distance of 164.18 feet to a found concrete monument;
7. Thence North 71°54'15" East a distance of 356.47 feet to a set rebar and cap;
8. Thence South 65°12'58" East a distance of 30.21 feet to a found set stone;
9. Thence South 65°12'58" East a distance of 1009.62 feet to a found concrete monument;
10. Thence with Fort Knox Military Reservation Tracts A-253 and A-346 (Withers, DB 73, Pg 511) South 65°14'51" East a distance of 1757.95 feet to a found concrete monument (N:3,864,480.82, E: 4,843,607.50), located in the west line of the Fort Knox Military Reservation, a corner to Tract A-171 (Lewis, DB 71, PG 161);

Thence following an old fence and the Fort Knox Military Reservation Boundary, Tract A-171 (Lewis) for five calls:

1. South 24°30'24" West a distance of 336.75 feet to a found iron pipe;
2. Thence South 24°24'08" West, passing set rebar and caps at 472.32 feet and 1165.76 feet, a total distance of 2165.76 feet to a found concrete monument (N: 3,862,202.39, E: 4,842,573.18), located on the northeast side of the gravel access road leading from KY 1638 to Camp Sky Hi;
3. Thence crossing the access road, South 39°17'09" East a distance of 174.69 feet to a set rebar and cap;
4. Thence meandering with the access road, North 64°14'59" East a distance of 530.10 feet to a set rebar and cap, a corner to Fort Knox Tract A-351 (Yates, DB 73, PG 69);

**--EXHIBIT A--**  
**DONATION with restrictions - 2180.107 acres**

Thence with Tract A-351, South 03°28'25" East a distance of 24.65 feet to a set rebar and cap;

Thence with Tract A-351, South 27°00'08" East a distance of 877.10 feet to a set rebar and cap, a corner to Fort Knox Military Reservation, Tract A-334 (Whitworth, DB 73, PG 217);

Thence with Fort Knox Tract A-334 (Whitworth) and Tract A-13 (Anderhub, DB 73, PG 86), South 79°34'58" West, passing a set rebar and cap at 670.28 feet, a total distance of 1456.23 feet to a set rebar and cap;

Thence with Fort Knox Tract A-13 (Anderhub) line, South 16°34'57" West a distance of 143.70 feet to a found concrete monument (N: 3861556.10, E: 4842671.70) a corner to Fort Knox Tract A-228 (Nelson, DB 74, PG 59);

Thence with Tract A-228 for eight (8) calls:

1. North 23°35'34" West a distance of 221.00 feet to a set rebar and cap;
2. Thence South 38°58'52" West a distance of 577.10 feet to a set rebar and cap;
3. Thence South 67°46'04" West a distance of 277.40 feet to a set rebar and cap;
4. Thence North 87°46'41" West a distance of 249.80 feet to a set rebar and cap;
5. Thence South 06°14'11" East a distance of 100.00 feet to a set rebar and cap;
6. Thence South 07°43'31" East a distance of 559.67 feet to a found concrete monument;
7. Thence South 84°56'34" East a distance of 134.15 feet to a set rebar and cap;
8. Thence South 02°39'40" East a distance of 203.88 feet to a set rebar and cap, located in the north line of the Garnettsville Cemetery (DB 112, PG 41);

Thence with the Garnettsville Cemetery for five (5) calls:

1. Thence North 77°18'56" West a distance of 644.40 feet to a set rebar and cap;
2. Thence South 62°24'49" West a distance of 21.53 feet to a set rebar and cap;
3. Thence South 28°14'49" West a distance of 221.41 feet to a set rebar and cap;
4. Thence South 33°05'11" West a distance of 108.97 feet to a found concrete monument;
5. Thence South 52°04'18" West a distance of 47.66 feet to a set rebar and cap, located in the north right-of-way line of KY 1638, said rebar being the True Point of Beginning, containing 1969.151 acres, less the City of Louisville Landfill area of 2.966 acres (described below), leaving a total of 1966.185 acres, more or less for **USA Donation Lands - Tract 1**.

Included within **USA Donation Lands Tract 1** is the Graham Cemetery located near the northern end of the tract on the west side of the Otter Creek Outdoor Recreation Area Access Road, and is approximately 3100 feet northwest of the entrance into Camp Piomingo. The Graham Cemetery is 33-feet by 33-feet and surrounded by a stone wall about 4-feet tall.

**--EXHIBIT A--**  
**DONATION with restrictions - 2180.107 acres**

Included within **USA Donation Lands - Tract 1** is **YMCA Lease A**, for Camp Piomingo containing 162.130 acres and **YMCA Lease B**, for Camp Piomingo containing 0.737 acres. Included within the **YMCA Lease A** is the Hoover Cemetery. Access to the Hoover Cemetery is obtained thru Camp Piomingo.

**Exception 1 - City of Louisville Landfill – 2.966 Acres**

Commencing at the end-point of the herein described Landfill Access Easement, thence North 62°18'25" West a distance of 71.94 feet to a set rebar and cap, having Kentucky One Zone Coordinates with a Project Datum Factor of 1.00012059 of N: 3,862,492.45; E 4,838,395.60, the True Point of Beginning of the Landfill Area;

Thence North 23°58'33" East a distance of 335.67 feet to a set rebar and cap;  
Thence North 49°39'54" East a distance of 123.30 feet to a set rebar and cap;  
Thence South 51°43'40" East a distance of 173.46 feet to a set rebar and cap;  
Thence South 17°27'50" East a distance of 232.96 feet to a set rebar and cap;  
Thence South 38°11'24" West a distance of 174.90 feet to a set rebar and cap;  
Thence North 82°00'33" West a distance of 240.91 feet to a set rebar and cap;  
Thence North 62°18'25" West a distance of 101.39 feet to a set rebar and cap, the True Point of Beginning, containing 2.966 acres, more or less.

**Exception 1 - Landfill Access Easement**

The herein described access easement being 30-feet in width, the centerline defined as follows:  
Beginning at a point in the northeastern right-of-way of KY 1638 and centerline of Otter Creek Outdoor Recreation Area Road (formerly KY 3241, released in DB 310, PG 67), having Kentucky One Zone Coordinates with a Project Datum Factor of 1.00012059 of N: 3,860,909.72; E 4,838,749.48;

Thence with the centerline of Otter Creek Outdoor Recreation Area Road for five (5) calls:

1. North 11°54'22" West a distance of 371.35 feet to a point;
2. Thence with a curve turning to the left with an arc length of 212.36', with a radius of 888.43', with a chord bearing of North 15°55'39" West, with a chord length of 211.85 feet to a point;
3. Thence with a compound curve turning to the left with an arc length of 223.97', with a radius of 4675.66', with a chord bearing of North 25°15'17" West, with a chord length of 223.95' to a point;
4. Thence North 29°18'53" West a distance of 552.72 feet to a point;
5. Thence North 32°39'17" West a distance of 33.36 feet to a point;

Thence leaving Otter Creek Park Road and following the centerline of the existing access drive for eight (8) calls:

1. North 32°11'39" East a distance of 36.42 feet to a point;
2. Thence North 10°07'16" East a distance of 39.52 feet to a point;
3. Thence North 14°55'44" East a distance of 32.77 feet to a point;
4. Thence North 33°04'50" East a distance of 46.96 feet to a point;

**--EXHIBIT A--**  
**DONATION with restrictions - 2180.107 acres**

5. Thence North 60°29'19" East a distance of 63.06 feet to a point;
6. Thence North 28°09'07" East a distance of 49.86 feet to a point;
7. Thence North 41°52'59" East a distance of 29.74 feet to a point;
8. Thence North 65°37'38" East a distance of 76.90 feet to a point in the south line of the Landfill.

**OTTER CREEK OUTDOOR RECREATION AREA - USA DONATION LANDS - TRACT 2 (RESTRICTED)**

Beginning at a set rebar and cap located in the centerline of the Froman's Hollow Branch, having Kentucky One Zone Coordinates of N: 3,875,772.38; E: 4,831,364.72, thence with the centerline of the Froman's Hollow Branch North 46°19'57" East a distance of distance of 130.15 feet to a point at the deed of record low water mark of the Ohio River at the mouth of Froman's Hollow Branch, the True Point of Beginning of the herein described Tract 2;

Thence continuing North 46°19'57" East a distance of 463.72 feet to a point in the thread of the Ohio River;

The thread of Ohio River location is based on the legal precedent from *Handly's Lessee v Anthony, 5 Wheat. 374, 18 U.S. 374, 5 L.Ed. 113 (1820)*, and others:

".... it has been established that an individual Kentucky landowner whose lands border on the Ohio River owns only to the thread of the river, while the ownership of the Commonwealth of Kentucky in its sovereign capacity extends to the low water mark on the northwestern side of the river".

Thence upstream with the Thread of the Ohio River as determined by edge of water measurements on opposite banks during low water in October of 2010 for five (5) calls:

1. South 38°49'25" East a distance of 454.09 feet to a point;
2. Thence South 43°59'55" East a distance of 4044.90 feet to a point;
3. Thence with a curve turning to the left with an arc length of 1493.52', with a radius of 2731.80', with a chord bearing of South 64°54'35" East, with a chord length of 1474.98 feet to a point;
4. Thence North 89°56'22" East a distance of 1466.77 feet to a point;
5. Thence with a curve turning to the left with an arc length of 3429.17', with a radius of 3648.46', with a chord bearing of North 39°28'00" East, with a chord length of 3304.33 feet, to a point opposite the mouth of Otter Creek;

Thence leaving the Thread of the Ohio River, South 81°51'43" East a distance of 702.90 feet to the mouth of Otter Creek;

**--EXHIBIT A--**  
**DONATION with restrictions - 2180.107 acres**

The thread of the Ohio River and the thread of Otter Creek have witness corners set at spacing intervals no greater than 1000-feet. The thread of Otter Creek is also the west boundary line of a portion of Fort Knox Military Reservation, said boundary line being marked and signed historically, previously and currently on the east bank.

Thence upstream with the thread of Otter Creek, as determined from edge of water measurements on opposite banks, during low water in the Fall of 2010, for two (2) calls:

1. South 59°56'51" East a distance of 101.10 feet to a point;
2. Thence South 49°28'49" East a distance of 168.68 feet to a point located in the north 30-foot CSX Railway right-of-way;

Thence with the north 30-foot railroad right-of-way line for five (5) calls:

1. With a curve turning to the right with an arc length of 630.29', with a radius of 353,642.74', with a chord bearing of South 28°30'08" West, passing a set rebar and cap at 63.83 feet, a total chord length of 630.29' to a set rebar and cap;
2. Thence South 28°36'28" West a distance of 517.52 feet to a set rebar and cap;
3. Thence with a curve turning to the right with an arc length of 1066.59', with a radius of 5809.34', with a chord bearing of South 33°06'55" West, with a chord length of 1065.09', to a set rebar and cap;
4. Thence South 38°26'41" West a distance of 747.08 feet, to a set rebar and cap;
5. Thence with a curve turning to the right with an arc length of 511.14', with a radius of 1654.83', with a chord bearing of South 44°52'38" West, with a chord length of 509.11',

Thence leaving the 30-foot right-of-way line for four (4) calls:

1. North 63°54'49" West, passing a set rebar and cap at 134.48', a total distance of 302.00 feet to a point in the bed of the Ohio River;
2. Thence South 76°50'11" West a distance of 924.00 feet to a point in the bed of the Ohio River;
3. Thence South 85°50'11" West a distance of 1197.91 feet to a set rebar and cap;
4. Thence South 13°50'11" West a distance of 44.52 feet to a set rebar and cap located in the north 30-foot CSX right-of-way;

Thence with a curve turning to the right with an arc length of 253.60', with a radius of 1606.79', with a chord bearing of North 79°31'05" West, with a chord length of 253.33', to a set rebar and cap located in the north 30-foot CSX owned right-of-way (see Right-of-Way and Track Map of the Louisville, Henderson & St. Louis Railway, No. L&N 101-V1/12 dated June 30, 1918, at Station 1266+61 LL – the old Lewis Hoover crossing line) and a corner to the City of Louisville, the Patterson Area 2 (DB69, Pg 537)

Thence with the deed of record low water line of the Ohio River for twelve (12) calls:

1. Thence North 00°55'58" West a distance of 184.30 feet to a deed point (not set);
2. Thence North 82°18'58" West a distance of 126.60 feet to a deed point (not set);
3. Thence North 72°11'58" West a distance of 160.40 feet to a deed point (not set);

**--EXHIBIT A--**  
**DONATION with restrictions - 2180.107 acres**

4. Thence North 74°49'58" West a distance of 404.60 feet to a deed point (not set);
5. Thence North 39°11'58" West a distance of 168.70 feet to a deed point (not set);
6. Thence North 60°44'58" West a distance of 1148.70 feet to a deed point (not set);
7. Thence North 33°54'58" West a distance of 386.30 feet to a deed point (not set);
8. Thence North 61°23'58" West a distance of 199.10 feet to a deed point (not set);
9. Thence North 56°24'58" West a distance of 625.50 feet to a deed point (not set);
10. Thence North 37°07'58" West a distance of 163.20 feet to a deed point (not set);
11. Thence North 38°15'58" West a distance of 1243.60 feet to a deed point (not set);
12. Thence North 38°54'58" West a distance of 1757.51 feet to a deed point (not set), the True Point of Beginning, containing 7728209.37 square feet or 177.415 acres.

Included within **USA Donation Lands Tract 2** is a Warranty Deed of Flowage Easement (DB 106, PG 101) containing five (5) Tracts identified as 5206-E-1 thru 5206-E-5, encompassing a total land area of 63.25 acres, of which 7.86 acres lie below the 390 foot elevation (M.S.L. Sandy Hook Datum).

**OTTER CREEK OUTDOOR RECREATION AREA - USA DONATION LANDS – TRACT 3 – (RESTRICTED)**

Beginning at a set rebar and cap, located across the road from Rock Haven Methodist Church-Woolrich Cemetery (DB 447, Pg 151) in the southwestern 30-foot right-of-way line of KY 1238 or Rock Ridge- Rock Haven Road, being 15-feet each side of centerline, said rebar having Kentucky One Zone State Plane Coordinates of N: 3,869,205.93, E: 4,832,831.32, a corner to Christin & Raymond Menard (DB 510, PG 215, Parcel 1);

Thence with the west line of Menard and Ashley & Jacob Carmon (DB 498, PG 276), South 48°00'25" West a distance of 663.56 feet to a found concrete monument, a corner to Carmon and Thomas & Janet Powell (DB 479, PG 388);

Thence with the west line of Powell, South 51°45'29" West a distance of 226.24 feet to a found concrete monument, a corner to Powell and James B. Higbee (DB 518, PG 68);

Thence with the west line of Higbee, South 51°45'34" West a distance of 575.61 feet to a found rebar and cap stamped LS 2373, located in the northeast line of Edward Andrade, Jr. (DB 388, PG 415);

Thence with the northeast line of Andrade, North 35°05'52" West, passing a set rebar and cap at 340.06 feet, a total distance of 1306.95 feet to a set rebar and cap near a painted Oak tree, said rebar is located in the easterly right-of-way line of Allen Road, being 30-feet in width, 15-feet each side of centerline;

Thence with the said southeasterly right-of-way line of Allen Road for eight (8) calls:

1. North 55°15'29" East a distance of 122.20 feet to a set rebar and cap;
2. Thence North 53°30'20" East a distance of 124.95 feet to a set rebar and cap;



**--EXHIBIT A--**  
**DONATION with restrictions - 2180.107 acres**

3. Thence North 52°12'16" East a distance of 225.65 feet to a set rebar and cap;
4. Thence North 53°08'46" East a distance of 267.52 feet to a set rebar and cap;
5. Thence North 52°55'06" East a distance of 89.81 feet to a set rebar and cap;
6. Thence North 57°13'43" East a distance of 139.00 feet to a set rebar and cap;
7. Thence North 52°12'26" East a distance of 57.44 feet to a set rebar and cap;
8. Thence North 50°10'39" East a distance of 189.67 feet to a set Magnail, located in the south right-of-way line of KY 1238 or Rock Ridge- Rock Haven Road;

Thence with the right-of-way line of KY 1238 or Rock Ridge- Rock Haven Road for four (4) calls:

1. South 45°55'15" East a distance of 279.83 feet to a set rebar and cap;
2. Thence South 46°26'33" East a distance of 433.41 feet to a set rebar and cap;
3. Thence South 46°38'39" East a distance of 427.25 feet to a set rebar and cap;
4. Thence South 46°49'04" East a distance of 103.99 feet to a set rebar and cap, being the True Point of Beginning of the "Poole" Area, containing 1,710,326.90 square feet or 39.264 acres, more or less.



3-23-12

BEING a new description of the same property or a portion of the same property conveyed to the City of Louisville, the governmental predecessor of Louisville/Jefferson County Metro Government, on the following dates and recorded in the following Deed Books and Pages all in the Office of the Clerk of Jefferson County, Kentucky:

**DATE OF DEED**

September 11, 1947

July 23, 1975

April 1, 1992

February 4, 2003

**DEED BOOK AND PAGE NUMBER**

Deed Book 78, Page 439

Deed Book 133, Page 164

Deed Book 310, Page 7

Deed Book 469, Page 527

**--EXHIBIT A--DONATION without restrictions - 143.672 acres  
CITY OF LOUISVILLE – (DB 90, PG 617, 139.1 Acres by Deed)**

The herein described lands are located in Meade County, Kentucky, situated south of the Ohio River, west of Otter Creek and the Fort Knox Military Reservation, north of KY 1638, and east and north of KY 1238 (Rock Ridge- Rock Haven Road).

The herein described property is the result of an actual field survey performed by GRW Engineers, Inc./GRW Aerial Surveys, Inc. between October 2010 and February 2011 for the Commonwealth of Kentucky, Finance and Administration Cabinet, Department for Facilities and Support Services and the Department of Fish and Wildlife Resources, Titled as "RFP-430, Otter Creek Park – Survey", Document ID Number "PON2 785 1100001420 1".

All set property corners described herein are 5/8-inch steel rebar 18-inches in length with a yellow plastic cap stamped "E. Rinehart KY-LS-2283" set at ground level. Major corners have an orange fiberglass witness post set vertically nearby with an attached label showing the Kentucky Fish and Wildlife Resources stamp and "Survey Marker" printed vertically. All exterior property lines have marked trees which are painted with yellow stripes and have attached metal ownership identification signs. The Ohio River and Otter Creek have witness corners set at spacing intervals no greater than 1000-feet.

**SEE THE ACCOMPANYING PLAT SET FOR LOCATION DETAILS IDENTIFIED IN THE FOLLOWING DESCRIPTIONS.**

Commencing at a set rebar and cap on the bank of the Ohio River and north of the CSX railroad, having Kentucky One Zone State Plane Coordinates of N: 3,872,639.16; E 4,839,489.34, also being a reference point to the thread of the river, thence South 41°04'11" East a distance of 231.21 feet to a point in the thread of Otter Creek, said point being the True Point of Beginning of the Area described in Deed Book 90, Page 617, in the Meade County Clerk's Office;

Thence downstream with the thread of Otter Creek as determined by edge of water measurements on opposite banks during low water in October of 2010 for twenty (20) calls as follows:

1. North 31°44'13" East a distance of 270.94 feet;
2. Thence North 47°08'41" East a distance of 267.50 feet to a point;
3. Thence North 83°33'58" East a distance of 200.84 feet to a point
4. Thence South 79°49'40" East a distance of 151.03 feet to a point
5. Thence South 77°38'04" East a distance of 271.96 feet to a point;
6. Thence South 49°22'56" East a distance of 239.70 feet to a point
7. Thence South 05°54'39" West a distance of 155.15 feet to a point
8. Thence South 38°17'45" West a distance of 200.61 feet to a point;
9. Thence South 47°35'12" West a distance of 169.29 feet to a point
10. Thence South 74°57'54" West a distance of 275.50 feet to a point

**--EXHIBIT A--DONATION without restrictions - 143.672 acres**

11. Thence North 88°17'32" West a distance of 159.87 feet to a point;
12. Thence South 80°37'50" West a distance of 268.76 feet to a point
13. Thence South 28°07'38" West a distance of 190.58 feet to a point
14. Thence South 22°55'55" East a distance of 128.79 feet to a point
15. Thence South 66°01'02" East a distance of 329.78 feet to a point;
16. Thence South 79°39'19" East a distance of 147.93 feet to a point t;
17. Thence North 80°50'08" East a distance of 189.25 feet to a point;
18. Thence South 77°53'59" East a distance of 381.92 feet to a point
19. Thence South 53°06'17" East a distance of 490.78 feet to a point
20. Thence South 65°57'59" East a distance of 159.45 feet to a point

Thence leaving the thread of Otter Creek and running overland, South 03°15'55" West, passing a set rebar and cap reference at 55.33 feet, located on the creek bank ( N: 3,871,210.49, E: 4,841,321.55), then continuing South 03°15'55" West, passing set rebar and caps at 470.09 feet and at 1058.84 feet and a set rebar and cap at 1994.41 feet ( N: 3,869,274.80, E: 4,841,211.10), located on the bank of Otter Creek, a total distance of 2058.70 feet to a point in the thread of Otter Creek, said line marking the east line of the old Wilderness Camp Area of Otter Creek Park and Fort Knox Military Reservation, Tract A-346 (Withers, DB 73, PG 511);

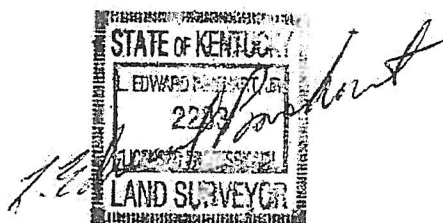
Thence downstream with the thread of Otter Creek as determined by edge of water measurements on opposite banks during low water in October of 2010 for twenty-seven (27) calls as follows:

21. North 65°20'57" West a distance of 132.61 feet;
22. Thence South 35°20'29" West a distance of 513.37 feet to a point;
23. Thence South 81°01'24" West a distance of 144.76 feet to a point t;
24. Thence North 52°10'17" West a distance of 506.02 feet to a point t;
25. Thence North 37°46'33" West a distance of 242.72 feet to a point
26. Thence North 58°13'06" West a distance of 327.68 feet to a point
27. Thence North 32°28'10" West a distance of 302.67 feet to a point;
28. Thence North 04°20'24" West a distance of 118.78 feet to a point
29. Thence North 10°20'44" East a distance of 263.39 feet to a point;
30. Thence North 57°58'33" West a distance of 133.32 feet to a point
31. Thence South 44°12'07" West a distance of 147.98 feet to a point;
32. Thence South 26°32'07" West a distance of 133.20 feet to a point
33. Thence South 67°16'35" West a distance of 139.48 feet to a point;
34. Thence North 71°19'33" West a distance of 83.14 feet to a point
35. Thence North 35°38'25" West a distance of 114.81 feet to a point
36. Thence North 49°36'19" West a distance of 453.10 feet to a point
37. Thence North 25°59'17" West a distance of 343.48 feet to a point
38. Thence North 07°30'40" West a distance of 125.17 feet to a point;
39. Thence North 06°59'43" East a distance of 283.89 feet to a point;
40. Thence North 33°50'27" East a distance of 227.99 feet to a point;

**--EXHIBIT A--DONATION without restrictions - 143.672 acres**

41. Thence North 54°04'48" East a distance of 90.53 feet to a point;
42. Thence North 64°05'45" East a distance of 389.96 feet to a point;
43. Thence North 37°29'18" East a distance of 224.93 feet to a point;
44. Thence North 02°55'15" West a distance of 453.09 feet to a point;
45. Thence North 35°51'56" East a distance of 231.13 feet to a point;
46. Thence North 27°10'49" East a distance of 85.07 feet to a point;
47. Thence North 51°24'38" East a distance of 170.68 feet to a point, the Point of Beginning, containing an area of 6,157,094.73 square feet or 141.347 acres, more or less.

Being a new description of the same property acquired by the City of Louisville, thru Quitclaim Deed, dated March 6, 1958, recorded in Deed Book 90, Page 617, in the Office of the Clerk of Meade County, Kentucky.



11-28-11

**--EXHIBIT A--DONATION without restrictions - 143.672 acres**

**CITY OF LOUISVILLE – RICHEY TRACT**

The herein described land is located in Meade County, Kentucky, situated south of the Ohio River, west of Otter Creek and the Fort Knox Military Reservation, north of KY 1638, and east and north of KY 1238 (Rock Ridge- Rock Haven Road).

The herein described property is the result of an actual field survey performed by GRW Engineers, Inc./GRW Aerial Surveys, Inc. between October 2010 and February 2011 and February 2012 for the Commonwealth of Kentucky, Finance and Administration Cabinet, Department for Facilities and Support Services and the Department of Fish and Wildlife Resources, Titled as "RFP-430, Otter Creek Park – Survey", Document ID Number "PON2 785 1100001420 1".

All set property corners described herein are 5/8-inch steel rebar 18-inches in length with a yellow plastic cap stamped "E. Rinehart KY-LS-2283" set at ground level. Major corners have an orange fiberglass witness post set vertically nearby with an attached label showing the Kentucky Fish and Wildlife Resources stamp and "Survey Marker" printed vertically. All exterior property lines have marked trees which are painted with yellow stripes and have attached metal ownership identification signs. The Ohio River and Otter Creek have witness corners set at spacing intervals no greater than 1000-feet

**The Richey Tract (DB 112, PG 93) – 2.325 Acres**

Beginning at a found rebar and cap stamped LS 2378, located in the east right-of-way of Fern Cliff Road and in the southwest line of George T. Thomas (DB 276, PG 283), having Kentucky One Zone Coordinates of N: 3,871,686.75; E 4,832,468.31;

Thence leaving Fern Cliff Road and running with the southwest line of Thomas, South 46°40'35" East a distance of 303.46 feet to a found concrete monument;

Thence leaving the Thomas line, South 57°37'20" West a distance of 653.40 feet to a set rebar and cap located in the east right-of-way line of Fern Cliff Road;

Thence with said east right-of-way of Fern Cliff Road for ten (10) calls:

1. North 21°20'02" East a distance of 41.09 feet to a set rebar and cap;
2. Thence North 00°21'25" East a distance of 61.69 feet to a set rebar and cap;
3. Thence North 11°23'34" East a distance of 34.39 feet to a set rebar and cap;
4. Thence North 37°42'54" East a distance of 92.97 feet to a set rebar and cap;
5. Thence North 38°20'03" East a distance of 71.26 feet to a set rebar and cap;
6. Thence North 47°38'21" East a distance of 48.44 feet to a set rebar and cap;
7. Thence North 56°56'40" East a distance of 66.39 feet to a set rebar and cap;
8. Thence North 40°23'22" East a distance of 79.43 feet to a set rebar and cap;

**--EXHIBIT A--DONATION without restrictions - 143.672 acres**

9. Thence North 23°50'05" East a distance of 154.01 feet to a set rebar and cap;
10. Thence North 06°17'22" East a distance of 24.93 feet to a found rebar and cap stamped LS 2378, located in the southwest line of George T. Thomas (DB 276, PG 283) , the Point of Beginning, containing 101,285.42 square feet or 2.325 acres, more or less.

Being a new description of the same property acquired by the City of Louisville by Deed dated February 2, 1969, recorded in Deed Book 112, Page 93, in the Office of the Clerk of Meade County, Kentucky.



3-10-2012

**--EXHIBIT A--**  
**PURCHASE - 65.868 ACRES**

**CITY OF LOUISVILLE – 3 TRACTS**

The herein described lands are located in Meade County, Kentucky, situated south of the Ohio River, west of Otter Creek and the Fort Knox Military Reservation, north of KY 1638, and east and north of KY 1238 (Rock Ridge- Rock Haven Road).

The herein described property is the result of an actual field survey performed by GRW Engineers, Inc./GRW Aerial Surveys, Inc. between October 2010 and February 2011 and February 2012 for the Commonwealth of Kentucky, Finance and Administration Cabinet, Department for Facilities and Support Services and the Department of Fish and Wildlife Resources, Titled as "RFP-430, Otter Creek Park – Survey", Document ID Number "PON2 785 1100001420 1".

All set property corners described herein are 5/8-inch steel rebar 18-inches in length with a yellow plastic cap stamped "E. Rinehart KY-LS-2283" set at ground level. Major corners have an orange fiberglass witness post set vertically nearby with an attached label showing the Kentucky Fish and Wildlife Resources stamp and "Survey Marker" printed vertically. All exterior property lines have marked trees which are painted with yellow stripes and have attached metal ownership identification signs. The Ohio River and Otter Creek have witness corners set at spacing intervals no greater than 1000-feet.

**SEE THE ACCOMPANYING PLAT SET FOR LOCATION DETAILS IDENTIFIED IN THE FOLLOWING DESCRIPTIONS.**

**The Patterson Area - Tract 1 (DB 69, PG 537)-10.445 Acres – South of the Railroad**

Beginning at a set rebar and cap (N: 3,872,379.27 E: 4,833,976.08) located in the south 30-foot CSX Railway right-of-way near Station 1290+00, located west of the paved River Road railroad crossing;

Thence South 22°32'02" West a distance of 750.15 feet to a set rebar and cap;

Thence South 70°09'02" West, passing a found concrete monument at 115.76 feet, a total distance of 265.76 feet to a set spike in the paved asphalt road;

Thence South 09°58'58" East a distance of 414.20 feet to a point in the creek, witnessed by a rebar and cap bearing North 29°30'57" West, 33.32 feet;

Thence North 33°57'55" West a distance of 300.78 feet to a set rebar and cap;

Thence North 19°20'49" West a distance of 244.96 feet to a found concrete monument in the northeast line of George T. Thomas (DB 276, PG 283);

Thence with a northeasterly line of Thomas for seven (7) calls:

1. Thence North 26°13'23" East a distance of 80.51 feet to a found iron pipe;
2. Thence North 27°02'53" East a distance of 85.71 feet to a found iron pipe;
3. Thence North 18°17'46" East a distance of 75.08 feet to a found iron pipe;
4. Thence North 23°41'56" East a distance of 225.22 feet to a found iron pipe;



**--EXHIBIT A--**  
**PURCHASE - 65.868 ACRES**

5. Thence North 25°13'37" East a distance of 225.37 feet to a found iron pipe;
6. Thence North 27°36'54" East a distance of 60.62 feet to a set rebar and cap;
7. Thence North 00°15'58" West a distance of 202.00 feet to set rebar and cap;

Thence with the lines of Thomas and Phyllis O'Dea (DB 260, PG 199), North 50°06'58" West a distance of 528.80 feet to a set rebar and cap, a corner to O'Dea and Arthur W. and Mildred C. Howard (DB 135, PG 136);

Thence with Howard for two (2) calls:

1. North 19°26'58" West a distance of 203.70 feet to a set rebar and cap;
2. Thence North 43°30'30" West a distance of 221.76 feet to a set rebar and cap, located in the south line of the railroad right-of-way near the old Kiln;

Thence with the south line of the CSX railroad right-of-way for seven (7) calls:

1. North 47°36'11" East a distance of 18.00 feet to a set rebar and cap, located in the 12-foot railroad right-of-way line;
2. Thence South 42°23'49" East a distance of 36.01 feet to a set rebar and cap;
3. Thence with a curve turning to the left with an arc length of 265.37', with a radius of 2303.74', with a chord bearing of South 45°41'49" East, with a chord length of 265.23', to a set rebar and cap;
4. Thence South 41°00'11" West, a distance of 18.00 feet to a set rebar and cap in the south 30-foot right-of-way line;
5. Thence with a curve turning to the left with an arc length of 17.56', with a radius of 2321.74', with a chord bearing of South 49°12'49" East, with a chord length of 17.56', to a set rebar and cap;
6. Thence South 49°25'49" East, a distance of 719.00 feet to a set rebar and cap;
7. A curve turning to the left, having an arc length of 108.60', with a radius of 1462.69', with a chord bearing of South 51°33'27" East, with a chord length of 108.58', to a set rebar and cap;

Thence with leaving the 30-foot right-of-way with the City of Louisville and the old depot platform line for three (3) calls:

1. Thence South 36°18'56" West, a distance of 70.00 feet to a set rebar and cap;
2. Thence with a curve turning to the left with an arc length of 150.06', with a radius of 1532.69', with a chord bearing of South 56°29'21" East, with a chord length of 150.00', to a set rebar and cap;
3. Thence North 30°42'21" East, a distance of 70.00 feet to set rebar and cap located in the 30-foot railroad right-of-way line;

Thence with a curve turning to the left with an arc length of 57.30', with a radius of 1462.69', with a chord bearing of South 60°24'59" East, with a chord length of 57.30', to a set rebar and cap, the True Point of Beginning, containing 454,548.60 square feet or 10.435 acres.

**--EXHIBIT A--**  
**PURCHASE - 65.868 ACRES**

Being a new description of the same property, acquired by the City of Louisville by Deed dated October 30, 1939, recorded in Deed Book 69, Page 537, in the Office of the Clerk of Meade County, Kentucky, now described in two (2) Tracts.

**The Patterson Area – Tract 2 (DB 69, PG 537) – 52.767 Acres – North of the Railroad**

Beginning at a point located in the centerline of the Froman's Hollow Branch at the north CSX railroad 30-foot right-of-way line near VAL Station 1332+29, having Kentucky One Zone Coordinates of N: 3,875,628.33; E: 4,831,251.28, the True Point of Beginning of the herein described Parcel 2, as recorded in Deed Book 69, Page 537, Meade County Clerk's Office;

Thence with the centerline of the Froman's Hollow Branch for three (3) calls:

1. North 20°47'50" East a distance of 50.29 feet to a point in the branch;
2. Thence North 40°52'45" East a distance of 44.24 feet to a set 6" spike in the centerline of the branch;
3. Thence North 46°19'57" East, passing a set rebar and cap at 92.11 feet, a total distance of 222.26 feet to a point at the deed of record low water mark of the Ohio River at the mouth of Froman's Hollow Branch;

Thence with the Deed of Record low water line of the Ohio River for eleven (11) calls:

1. South 38°54'58" East a distance of 1757.51 feet to a deed point (not set);
2. Thence South 38°15'58" East a distance of 1243.60 feet to a deed point (not set);
3. Thence South 37°07'58" East a distance of 163.20 feet to a deed point (not set);
4. Thence South 56°24'58" East a distance of 625.50 feet to a deed point (not set);
5. Thence South 61°23'58" East a distance of 199.10 feet to a deed point (not set);
6. Thence South 33°54'58" East a distance of 386.30 feet to a deed point (not set);
7. Thence South 60°44'58" East a distance of 1148.70 feet to a deed point (not set);
8. Thence South 39°11'58" East a distance of 168.70 feet to a deed point (not set);
9. Thence South 74°49'58" East a distance of 404.60 feet to a deed point (not set);
10. Thence South 72°11'58" East a distance of 160.40 feet to a deed point (not set);
11. Thence South 82°18'58" East a distance of 126.60 feet to a deed point (not set);

Thence South 00°55'58" East a distance of 184.30 feet to a set rebar and cap located in the north 30-foot CSX (formerly L.H. & St. L.) owned right-of-way (see Right-of-Way and Track Map of the Louisville, Henderson & St. Louis Railway, No. L&N 101-V1/12 dated June 30, 1918, at Station 1266+61 LL – the old Lewis Hoover crossing line);

Thence with the 30-foot railroad right-of-way line for five (5) calls:

1. A curve turning to the right with an arc length of 36.44', with a radius of 1606.79', with a chord bearing of North 73°41'49" West, with a chord length of 36.44', to a set rebar and cap;
2. Thence North 73°41'49" West a distance of 222.20 feet to a set rebar and cap;

**--EXHIBIT A--**  
**PURCHASE - 65.868 ACRES**

3. Thence with a curve turning to the right with an arc length of 627.85', with a radius of 4883.26', with a chord bearing of North 70°00'49" West, with a chord length of 627.42' to a set rebar and cap ;
4. Thence North 66°19'49" West, passing a set rebar and cap at 641.60 ' , a total distance of 1283.20' to a set rebar and cap;
5. Thence with a curve turning to the right with an arc length of 309.59', with a radius of 1402.69', with a chord bearing of North 60°00'27" West, with a chord length of 308.96' to a set rebar and cap;

Thence South 36°18'56" West a distance of 12.00' to a set rebar and cap located in the 18-foot railroad right-of-way to a set rebar and cap ;

Thence with the 18-foot railroad right-of-way line for three (3) calls:

1. A curve turning to the right with an arc length of 105.04', with a radius of 1414.69', with a chord bearing of North 51°33'27" West, with a chord length of 105.01' to a set rebar and cap;
2. Thence North 49°25'49" West a distance of 719.00' to a set rebar and cap;
3. Thence with a curve turning to the right with an arc length of 17.20', with a radius of 2273.74', with a chord bearing of North 49°12'49" West, with a chord length of 17.20' to a set rebar and cap ;

Thence South 41°00'11" West a distance of 6.00' to a rebar and cap set in the 12-foot railroad right-of-way;

Thence with the 12-foot railroad right-of-way for two (2) calls:

1. A curve turning to the right with an arc length of 262.61', with a radius of 2279.74', with a chord bearing of North 45°41'49" West, with a chord length of 262.46' to a set rebar and cap ;
2. Thence North 42°23'49" West a distance of 36.01' to a set rebar and cap;

Thence North 47°36'11" East a distance of 18.00' to a set rebar and cap located in the 30-foot railroad right-of-way line;

Thence with the 30-foot railroad right-of-way line for three (3) calls:

1. North 42°23'49" West a distance of 799.09' to a set rebar and cap ;
2. Thence with a curve turning to the right with an arc length of 438.68', with a radius of 2834.72', with a chord bearing of North 37°57'49" West, with a chord length of 438.24' to a set rebar and cap ;
3. Thence North 33°31'49" West, passing a set rebar and cap at 843.43 feet and 1665.83 feet, a total distance of 1686.87' to a set rebar and cap, the True Point of Beginning, having an area of 2,298,531.19 square feet or 52.767 acres

**--EXHIBIT A--  
PURCHASE - 65.868 ACRES**

Being a new description of the same property acquired by the City of Louisville by Deed dated October 30, 1939, recorded in Deed Book 69, Page 537, in the Office of the Clerk of Meade County, Kentucky, now described in two (2) Parcels.

**The Van Buren Tract (DB 70, PG 49) – 2.666 Acres**

Beginning at a found concrete monument, located on the east side of the Rock Haven Valley Road and in the southern line of the City of Louisville-Patterson Tract 1 (DB 69, PG 537), having Kentucky One Zone Coordinates of N: 3,871,647.175; E 4,833,579.77;

Thence with the lines City of Louisville-Patterson Tract 1 for two (2) calls:

1. South 70°09'02" West a distance of 150.00 feet to a set spike in the paved asphalt road;
2. Thence South 09°58'58" East a distance of 414.20 feet to a point in the creek, witnessed by a rebar and cap bearing North 29°30'57" West, 33.32 feet;

Thence South 15°01'58" East a distance of 298.10 feet to a set rebar and cap;

Thence South 15°46'58" East a distance of 170.20 feet to a set rebar and cap;

Thence North 52°10'02" East a distance of 109.50 feet to a set rebar and cap;

Thence North 09°28'43" West a distance of 855.05 feet to a found concrete monument, the Point of Beginning, containing 116,130.96 square feet or 2.666 acres, more or less.

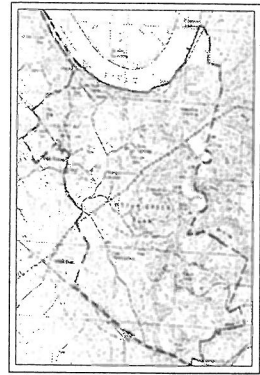
Being a new description of the same property acquired by the City of Louisville by Deed dated March 8, 1940, and recorded in Deed Book 70, Page 49, in the Office of the Clerk of Meade County, Kentucky.



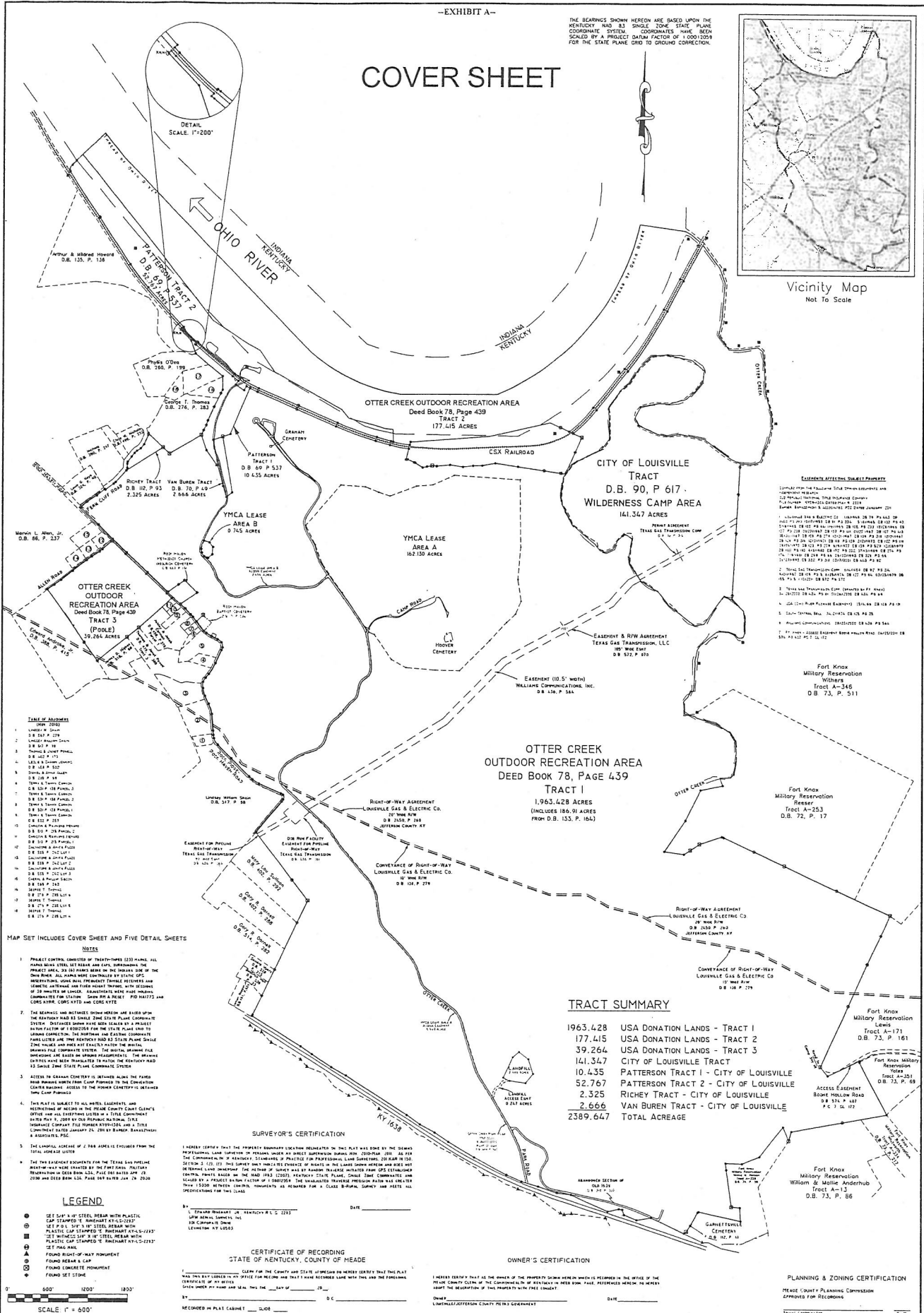
3-10-2012

# COVER SHEET

THE BEARINGS SHOWN HEREON ARE BASED UPON THE KENTUCKY NAD 83 SINGLE ZONE STATE PLANE COORDINATE SYSTEM. COORDINATES HAVE BEEN SCALED BY A PROJECT DATUM FACTOR OF 1.000209 FOR THE STATE PLANE GRID TO GROUND CORRECTION.



Vicinity Map  
Not To Scale



### TABLE OF ABSTRACTS

1. LINDSEY W. JONES D.B. 157, P. 278
2. LINDSEY W. JONES D.B. 157, P. 278
3. THOMAS & MARY FRANK D.B. 142, P. 113
4. LINDSEY W. JONES D.B. 157, P. 278
5. LINDSEY W. JONES D.B. 157, P. 278
6. LINDSEY W. JONES D.B. 157, P. 278
7. LINDSEY W. JONES D.B. 157, P. 278
8. LINDSEY W. JONES D.B. 157, P. 278
9. LINDSEY W. JONES D.B. 157, P. 278
10. LINDSEY W. JONES D.B. 157, P. 278
11. LINDSEY W. JONES D.B. 157, P. 278
12. LINDSEY W. JONES D.B. 157, P. 278
13. LINDSEY W. JONES D.B. 157, P. 278
14. LINDSEY W. JONES D.B. 157, P. 278
15. LINDSEY W. JONES D.B. 157, P. 278
16. LINDSEY W. JONES D.B. 157, P. 278
17. LINDSEY W. JONES D.B. 157, P. 278
18. LINDSEY W. JONES D.B. 157, P. 278

### MAP SET INCLUDES COVER SHEET AND FIVE DETAIL SHEETS

### NOTES

1. PROJECT CONTROL, CONSISTED OF TRACT-TOPED (23) PINE, ALL HAVE BEEN SET BY BEAM AND SIGHT, COORDINATE SYSTEM. DISTANCES BETWEEN AND SIDE SIGHTS TO A POINT BY THE METHOD OF INTERSECTION ON THE STATE PLANE GRID. ALL DISTANCES WERE CHECKED BY BEAM AND SIGHT. ALL DISTANCES WERE CHECKED BY BEAM AND SIGHT. ALL DISTANCES WERE CHECKED BY BEAM AND SIGHT.
2. THE BEARINGS AND DISTANCES SHOWN HEREON ARE BASED UPON THE KENTUCKY NAD 83 SINGLE ZONE STATE PLANE COORDINATE SYSTEM. DISTANCES BETWEEN AND SIDE SIGHTS TO A POINT BY THE METHOD OF INTERSECTION ON THE STATE PLANE GRID. ALL DISTANCES WERE CHECKED BY BEAM AND SIGHT. ALL DISTANCES WERE CHECKED BY BEAM AND SIGHT.
3. ACCESS TO GRANAH CEMETERY IS OBTAINED ALONG THE FERRY ROAD BEARING NORTH FROM CLAY FERRIS TO THE CONVENTION CENTER BEARING, ACCESS TO THE GRANAH CEMETERY IS OBTAINED FROM CLAY FERRIS.
4. THIS PLAN IS SUBJECT TO ALL WATER ADJUSTMENTS AND MEASUREMENTS AS PERMITTED BY THE PLANNING COMMISSION OF THE CITY OF LOUISVILLE. THIS PLAN IS SUBJECT TO ALL WATER ADJUSTMENTS AND MEASUREMENTS AS PERMITTED BY THE PLANNING COMMISSION OF THE CITY OF LOUISVILLE.
5. THE LANDS, LOCATED AT 2 1/2 ACRES IS EXCLUDED FROM THE TOTAL ACRES LISTED.
6. THE LANDS, LOCATED AT 2 1/2 ACRES IS EXCLUDED FROM THE TOTAL ACRES LISTED.

### LEGEND

- SET 1/4" x 1/4" OF STEEL BEAR WITH PLASTIC CAP STAMPED "E" BEARING 145-12212
- SET 1/4" x 1/4" OF STEEL BEAR WITH PLASTIC CAP STAMPED "E" BEARING 145-12212
- SET 1/4" x 1/4" OF STEEL BEAR WITH PLASTIC CAP STAMPED "E" BEARING 145-12212
- SET 1/4" x 1/4" OF STEEL BEAR WITH PLASTIC CAP STAMPED "E" BEARING 145-12212
- SET 1/4" x 1/4" OF STEEL BEAR WITH PLASTIC CAP STAMPED "E" BEARING 145-12212
- SET 1/4" x 1/4" OF STEEL BEAR WITH PLASTIC CAP STAMPED "E" BEARING 145-12212
- SET 1/4" x 1/4" OF STEEL BEAR WITH PLASTIC CAP STAMPED "E" BEARING 145-12212
- SET 1/4" x 1/4" OF STEEL BEAR WITH PLASTIC CAP STAMPED "E" BEARING 145-12212
- SET 1/4" x 1/4" OF STEEL BEAR WITH PLASTIC CAP STAMPED "E" BEARING 145-12212
- SET 1/4" x 1/4" OF STEEL BEAR WITH PLASTIC CAP STAMPED "E" BEARING 145-12212

SCALE 1" = 600'

### SURVEYOR'S CERTIFICATION

I HEREBY CERTIFY THAT THE PROPERTY BOUNDARY LOCATIONS INDICATED ON THIS PLAN WAS DONE BY THE SURVEYOR (NAME) UNDER MY PERSONAL SUPERVISION AND THAT I AM A LICENSED SURVEYOR IN THE STATE OF KENTUCKY. I HEREBY CERTIFY THAT THE PROPERTY BOUNDARY LOCATIONS INDICATED ON THIS PLAN WAS DONE BY THE SURVEYOR (NAME) UNDER MY PERSONAL SUPERVISION AND THAT I AM A LICENSED SURVEYOR IN THE STATE OF KENTUCKY.

### CERTIFICATE OF RECORDING

THIS INSTRUMENT WAS FILED FOR RECORD IN THE OFFICE OF THE COUNTY CLERK OF MEADE COUNTY, KENTUCKY, ON THIS DAY OF 2011. I HEREBY CERTIFY THAT THE PROPERTY BOUNDARY LOCATIONS INDICATED ON THIS PLAN WAS DONE BY THE SURVEYOR (NAME) UNDER MY PERSONAL SUPERVISION AND THAT I AM A LICENSED SURVEYOR IN THE STATE OF KENTUCKY.

### TRACT SUMMARY

1963.428	USA DONATION LANDS - TRACT 1
177.415	USA DONATION LANDS - TRACT 2
39.264	USA DONATION LANDS - TRACT 3
141.347	CITY OF LOUISVILLE TRACT
10.435	PATTERSON TRACT I - CITY OF LOUISVILLE
52.767	PATTERSON TRACT 2 - CITY OF LOUISVILLE
2.325	RICHEY TRACT - CITY OF LOUISVILLE
2.666	VAN BUREN TRACT - CITY OF LOUISVILLE
2389.647	TOTAL ACREAGE

### OWNER'S CERTIFICATION

I HEREBY CERTIFY THAT ALL THE BEARINGS AND DISTANCES SHOWN HEREON WERE MEASURED BY ME OR UNDER MY SUPERVISION AND THAT I AM THE OWNER OF THE PROPERTY SHOWN HEREON. I HEREBY CERTIFY THAT THE PROPERTY BOUNDARY LOCATIONS INDICATED ON THIS PLAN WAS DONE BY THE SURVEYOR (NAME) UNDER MY PERSONAL SUPERVISION AND THAT I AM A LICENSED SURVEYOR IN THE STATE OF KENTUCKY.

### EASEMENTS AFFECTING SUBJECT PROPERTY

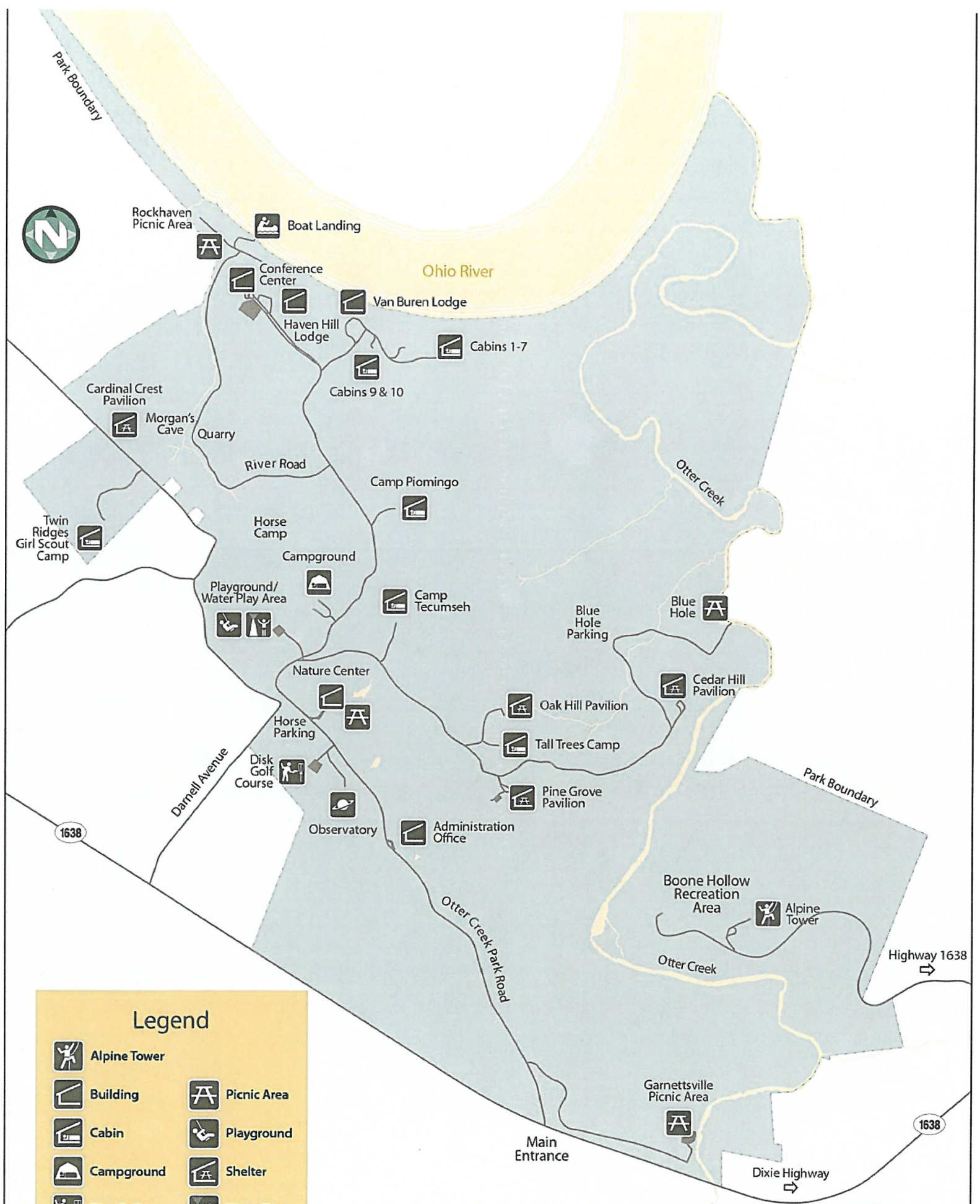
1. EASEMENT FOR THE FUTURE SELLER'S USE OF THE PROPERTY...
2. EASEMENT FOR THE FUTURE BUYER'S USE OF THE PROPERTY...
3. EASEMENT FOR THE FUTURE SELLER'S USE OF THE PROPERTY...
4. EASEMENT FOR THE FUTURE BUYER'S USE OF THE PROPERTY...
5. EASEMENT FOR THE FUTURE SELLER'S USE OF THE PROPERTY...
6. EASEMENT FOR THE FUTURE BUYER'S USE OF THE PROPERTY...
7. EASEMENT FOR THE FUTURE SELLER'S USE OF THE PROPERTY...
8. EASEMENT FOR THE FUTURE BUYER'S USE OF THE PROPERTY...
9. EASEMENT FOR THE FUTURE SELLER'S USE OF THE PROPERTY...
10. EASEMENT FOR THE FUTURE BUYER'S USE OF THE PROPERTY...

**OTTER CREEK OUTDOOR RECREATION AREA BOUNDARY SURVEY**  
**MEADE COUNTY, KENTUCKY**  
 OWNER: LOUISVILLE/JEFFERSON METRO GOVERNMENT - LOUISVILLE METRO PARKS  
 1297 TREVLIN WAY, LOUISVILLE, KENTUCKY 40223  
 CLIENT: COMMISSIONER OF KENTUCKY FINANCE AND ADMINISTRATION CABINET  
 DEPARTMENT FOR FACILITIES AND SUPPORTING SERVICES  
 402 WAPPING STREET, BUSH BUILDING, FRANKFORT, KENTUCKY 40601

**GRW**  
**ENGINEERS - ARCHITECTS - PLANNERS**  
 www.grw.com

GW PROJECT NO 1050-115  
 CLIENT PROJECT NO XXXX

NO.	REVISIONS	DATE	BY	CHKD	APP'D
1	ISSUED FOR PERMIT	10/15/2011	JL	JL	JL
2	ISSUED FOR PERMIT	10/15/2011	JL	JL	JL
3	ISSUED FOR PERMIT	10/15/2011	JL	JL	JL
4	ISSUED FOR PERMIT	10/15/2011	JL	JL	JL
5	ISSUED FOR PERMIT	10/15/2011	JL	JL	JL
6	ISSUED FOR PERMIT	10/15/2011	JL	JL	JL
7	ISSUED FOR PERMIT	10/15/2011	JL	JL	JL
8	ISSUED FOR PERMIT	10/15/2011	JL	JL	JL
9	ISSUED FOR PERMIT	10/15/2011	JL	JL	JL
10	ISSUED FOR PERMIT	10/15/2011	JL	JL	JL



Rockhaven Picnic Area

Boat Landing

Conference Center

Ohio River

Van Buren Lodge

Haven Hill Lodge

Cabins 1-7

Cabins 9 & 10

Cardinal Crest Pavilion

Morgan's Cave

Quarry

River Road

Camp Piomingo

Otter Creek

Twin Ridges Girl Scout Camp

Horse Camp

Campground

Playground/  
Water Play Area

Camp Tecumseh

Blue Hole Parking

Blue Hole

Nature Center

Cedar Hill Pavilion

Oak Hill Pavilion

Tall Trees Camp

Darnell Avenue

Horse Parking

Disk Golf Course

Observatory

Administration Office

Pine Grove Pavilion

Park Boundary

1638

Otter Creek Park Road

Boone Hollow Recreation Area

Alpine Tower

Highway 1638

Garnettville Picnic Area

Main Entrance

1638

Dixie Highway

### Legend

	Alpine Tower		Picnic Area
	Building		Playground
	Cabin		Shelter
	Campground		Water Play
	Disc Golf		