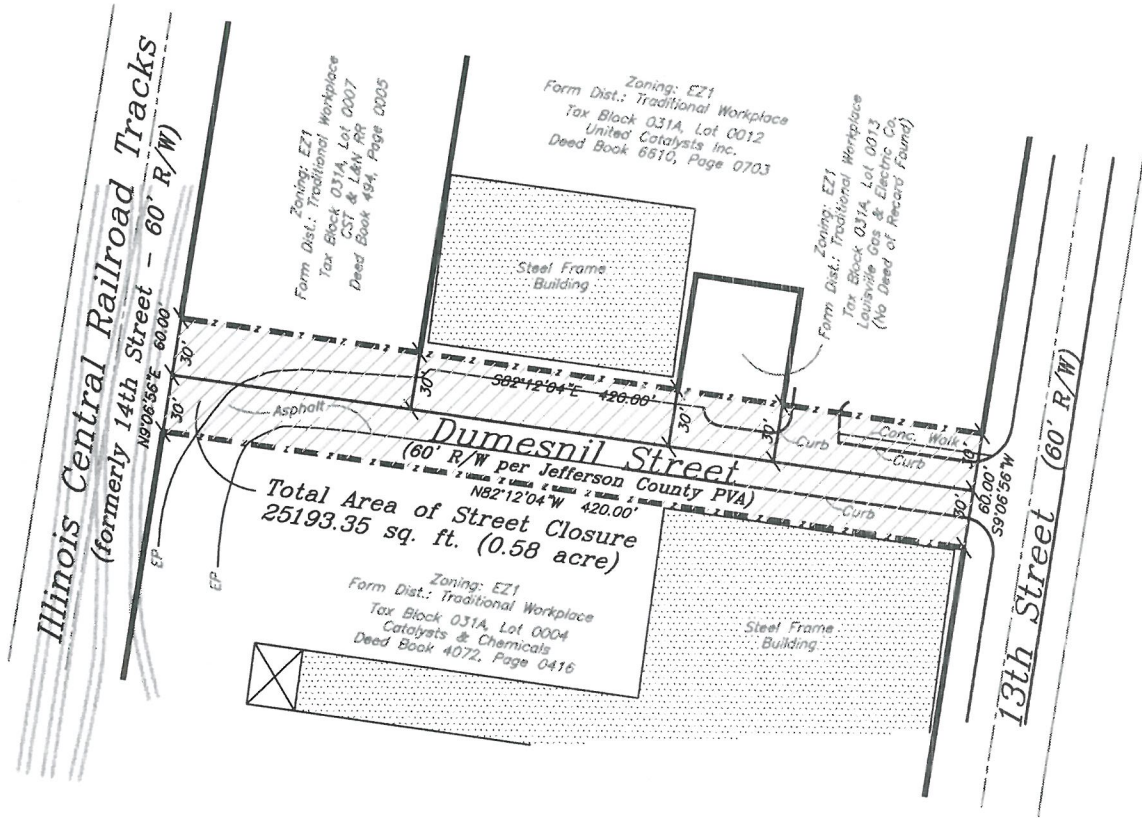
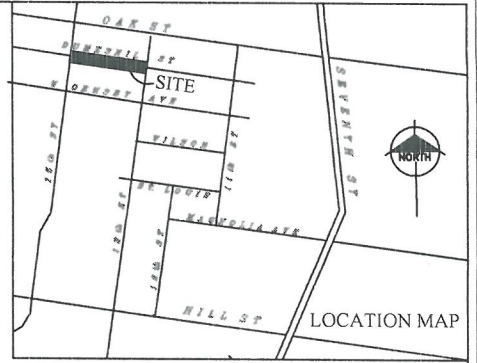


SURVEYOR'S NOTES

THIS PLAT IS SUBJECT TO ALL DEFECTS, LIENS, ENCUMBRANCES, ADVERSE CLAIMS, COVENANTS, RESTRICTIONS, ALL LEGAL EASEMENTS, RIGHT-OF-WAYS, ETC. WHICH MAY BE REVEALED BY A TITLE SEARCH WHETHER SHOWN ON THIS PLAT OR NOT. THIS PLAT IS FOR PURPOSES OF CLOSURE OF A PORTION OF DUMESNIL STREET BETWEEN 13TH AND 14TH STREETS, AND DOES NOT REPRESENT A BOUNDARY SURVEY.

MERIDIAN NOTES

THE REFERENCE MERIDIAN USED FOR THIS PLAT TO DETERMINE THE DIRECTION OF SURVEY LINES IS BASED ON THE SOUTH RIGHT OF WAY OF DUMESNIL STREET, HAVING THE BEARING OF N 82°12'04" W, PER GPS OBSERVATION ON MARCH 11, 2016.



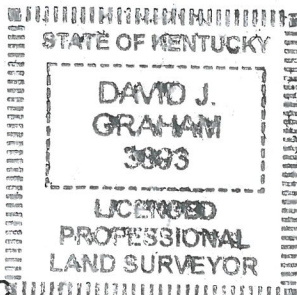
APPROVED:
LOUISVILLE METRO PLANNING
COMMISSION

DATE 6/1/17
BY Laura L. Manning

LAND SURVEYOR'S CERTIFICATE

I HEREBY CERTIFY THAT THE SURVEY DEPICTED HERE WAS MADE UNDER MY SUPERVISION, AND THAT THE ANGULAR AND LINEAR MEASUREMENTS AS WITNESSED BY MONUMENTS SHOWN HEREON, ARE TRUE AND CORRECT TO THE BEST OF MY KNOWLEDGE AND BELIEF. ALL MEASUREMENTS WERE MADE BY REAL TIME KINEMATIC (RTK) GPS OBSERVATION, USING A TOPCON PG-A1 DUAL-FREQUENCY RECEIVER. THE RELATIVE POSITIONAL ACCURACY IS WITHIN +/- 0.05 + 100 PPM. THE SURVEY AS SHOWN HEREON IS CLASS "URBAN" AND THE ACCURACY AND PRECISION OF SAID SURVEY MEETS OR EXCEEDS THE SPECIFICATION OF THIS CLASS.

SURVEYOR [Signature] #5893 4/12/17
CERT. NO. DATE



STREET CLOSING PLAT
Dumesnil Street closure between
13th & 14th Streets

FIELD SURVEY DATE : 03/11/16

PREPARED FOR Clariant Int. Ltd
(formerly United Catalysts, Inc.)
1330 S. 13th Street
Louisville, KY 40210-1570

MILLER WHRY MWGLLO
Engineers, Surveyors & Planners
1387 S. Fourth St., Louisville, KY 40208
Tel (502)636-5501 Fax (502)638-9538

DATE 04/13/17 SCALE 1" = 100' NO.

16 Streets 1013