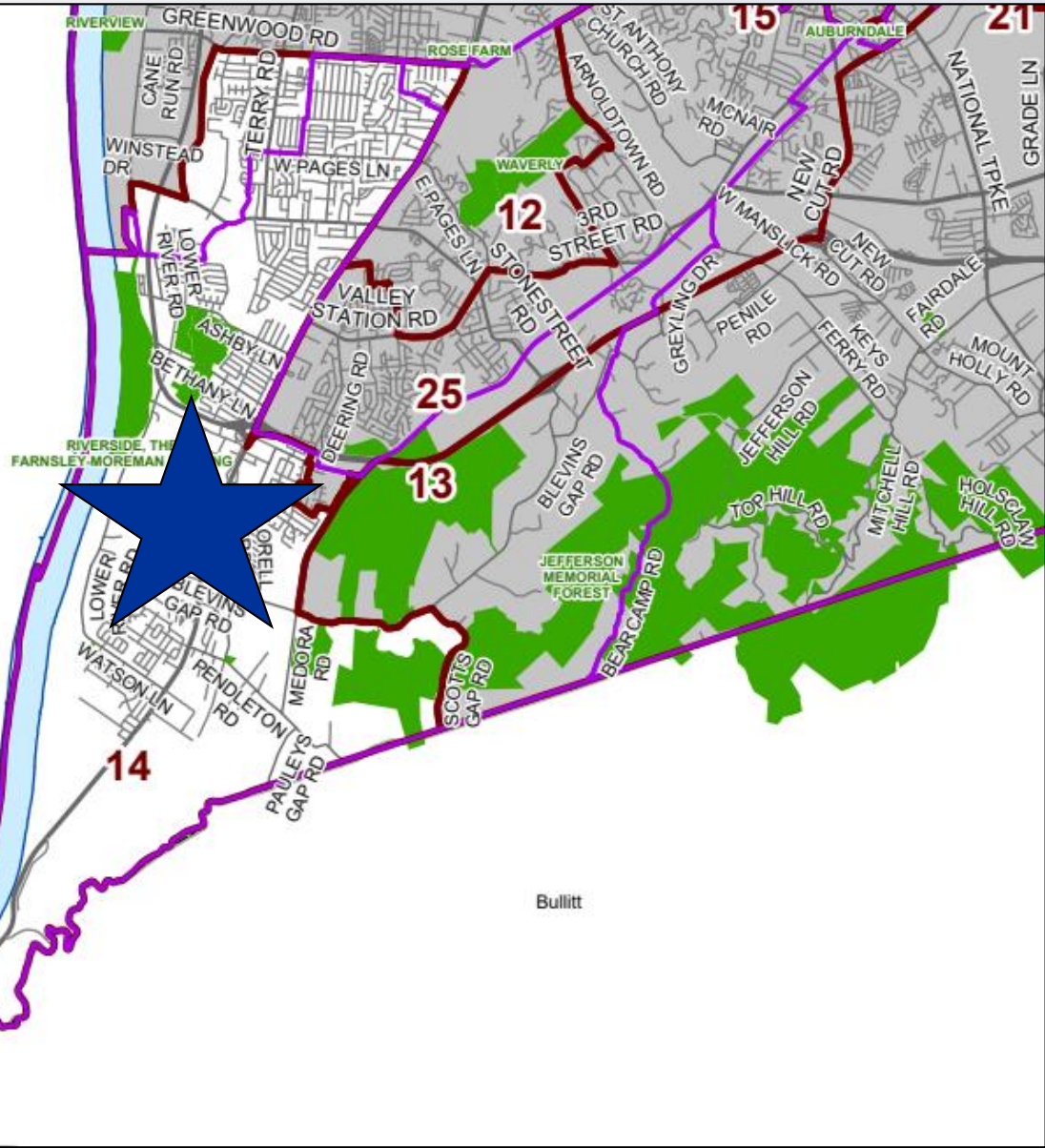
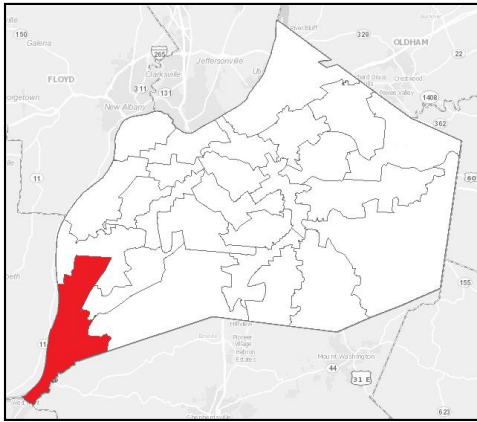


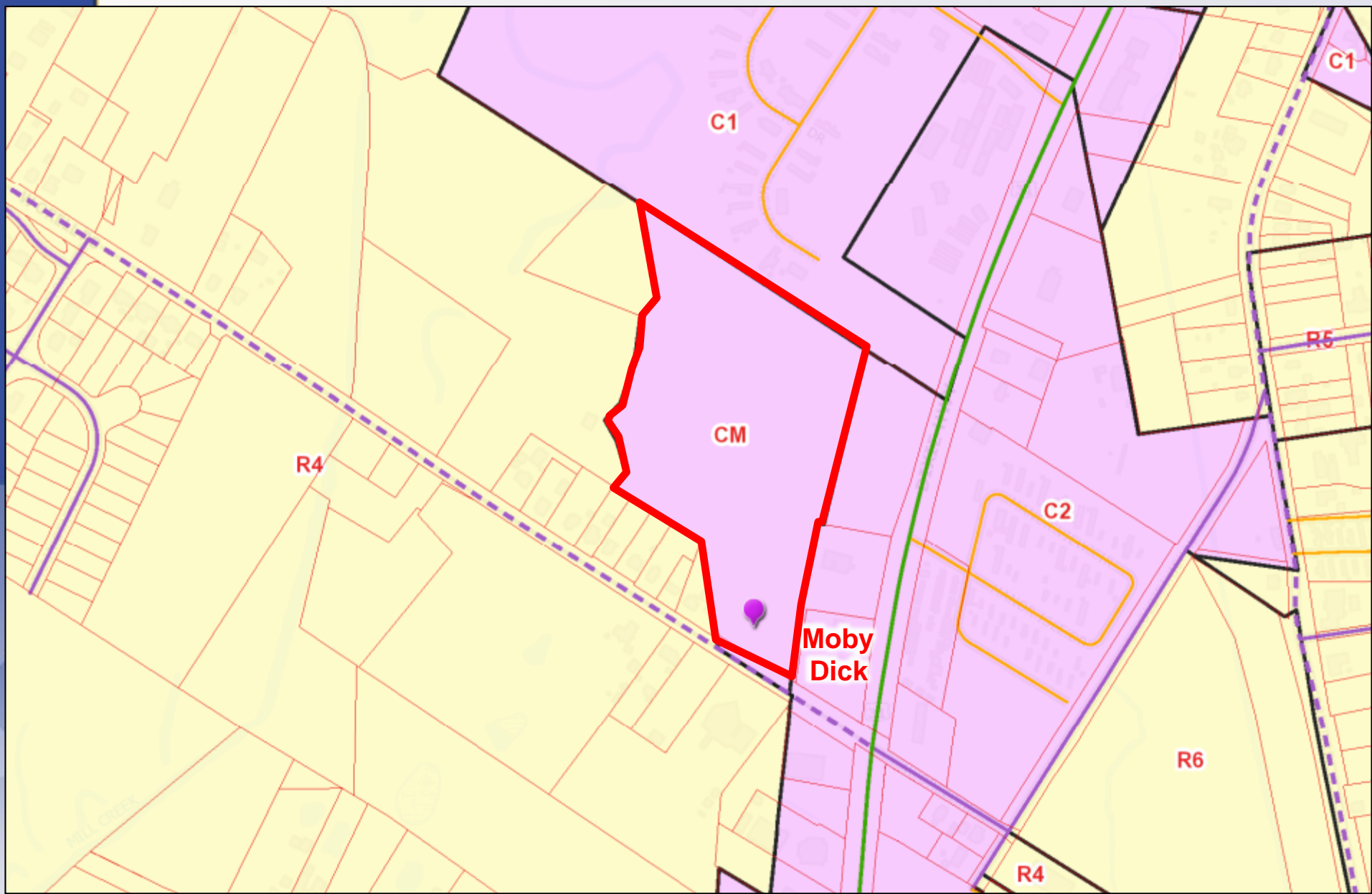
21-DDP-0083
6605 W ORELL ROAD
MULTI-FAMILY



Planning & Zoning Committee
April 19, 2022







Request(s)

- Revised Detailed District Development Plan with amendment to binding elements
- Binding Element #8 Any change of use or change to the approved development plan shall require Metro Council review and approval

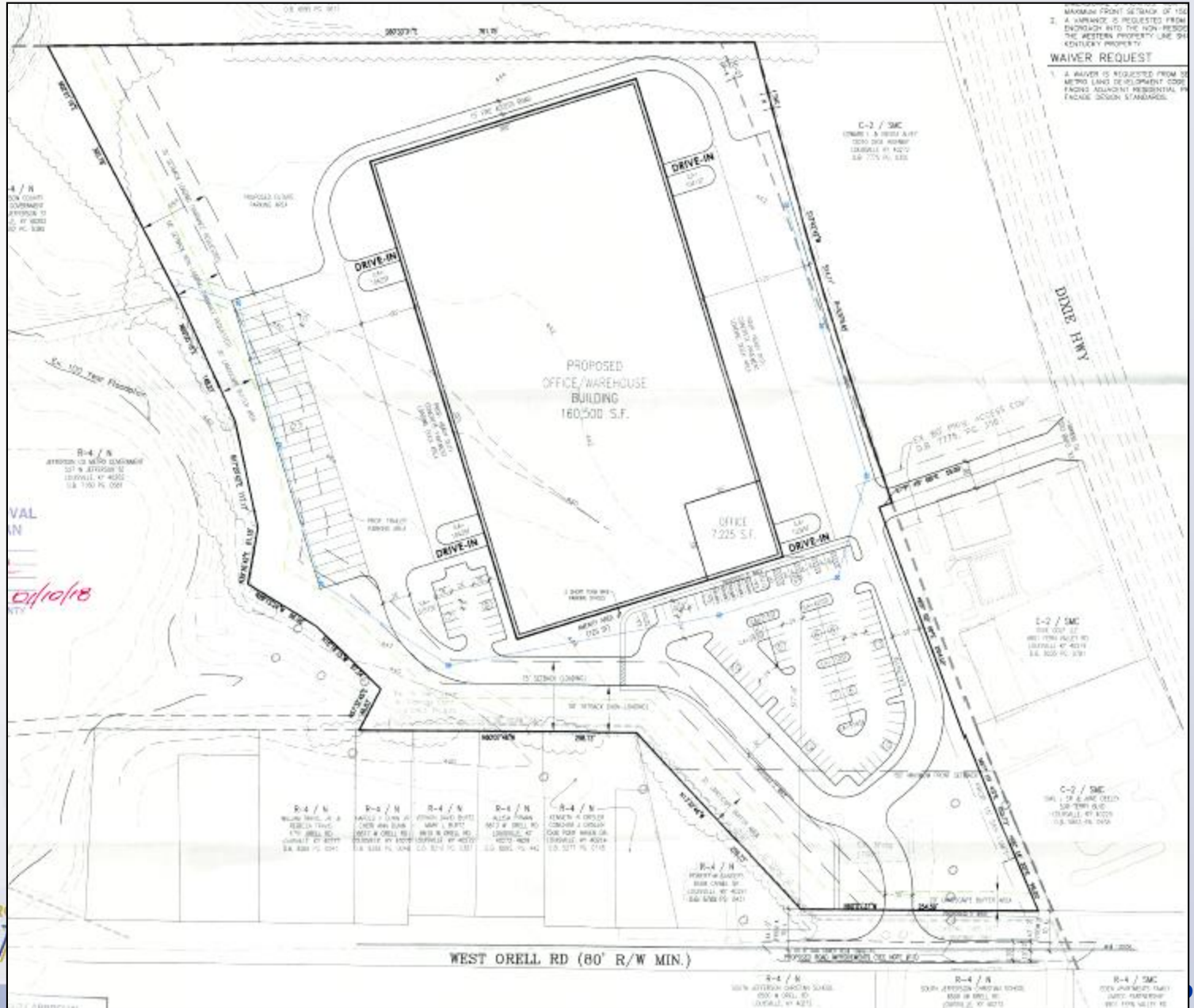
Case Summary

- C-M Suburban Marketplace Corridor
- Ten 3-story buildings
- 240 units - proposing 18.3 dwellings per acre
- 122,362 SF open space

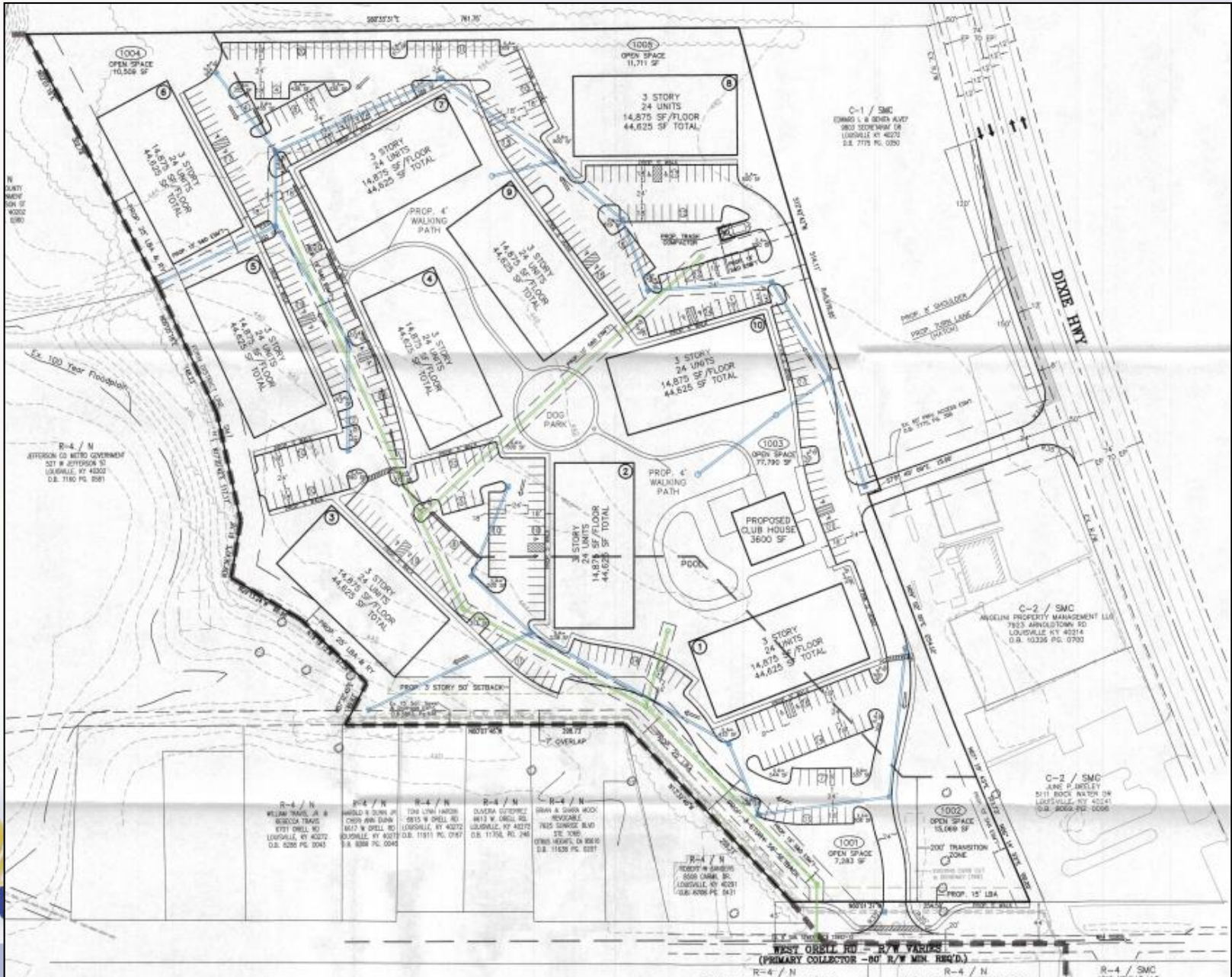
Site Photos-Subject Property



Previously Approved Plan



Applicant's Development Plan



WEST ORELL RD - R/W VARIATION
 (PRIMARY COLLECTOR - NO R/W MIN. REQ'D.)
 R-4 / N R-4 / N R-4 / SMC
 WEAVER & ASSOCIATES, L.L.C.

Applicant's Rendering



Clubhouse Rendering



Public Meetings

- Planning Commission public hearing on 3/17/2022
 - No one spoke in opposition.
 - Motion to recommend approval of the Revised Detailed District Development Plan by a vote of 9-0.