

## **BOWMAN AREA NEIGHBORHOODS PLAN**



**DEVELOP LOUISVILLE | ADVANCED PLANNING & SUSTAINABILITY**



**RUNDELL ERNSTBERGER ASSOCIATES**  
URBAN DESIGN + LANDSCAPE ARCHITECTURE + PLANNING + CIVIL ENGINEERING

19-AREAPLAN-0003

Planning Commission | 23 January 2020



**Background**  
**Community Engagement**  
**Vision Statement**  
**Plan Elements**

*Agenda*

**BOWMAN AREA NEIGHBORHOODS PLAN**



# BACKGROUND

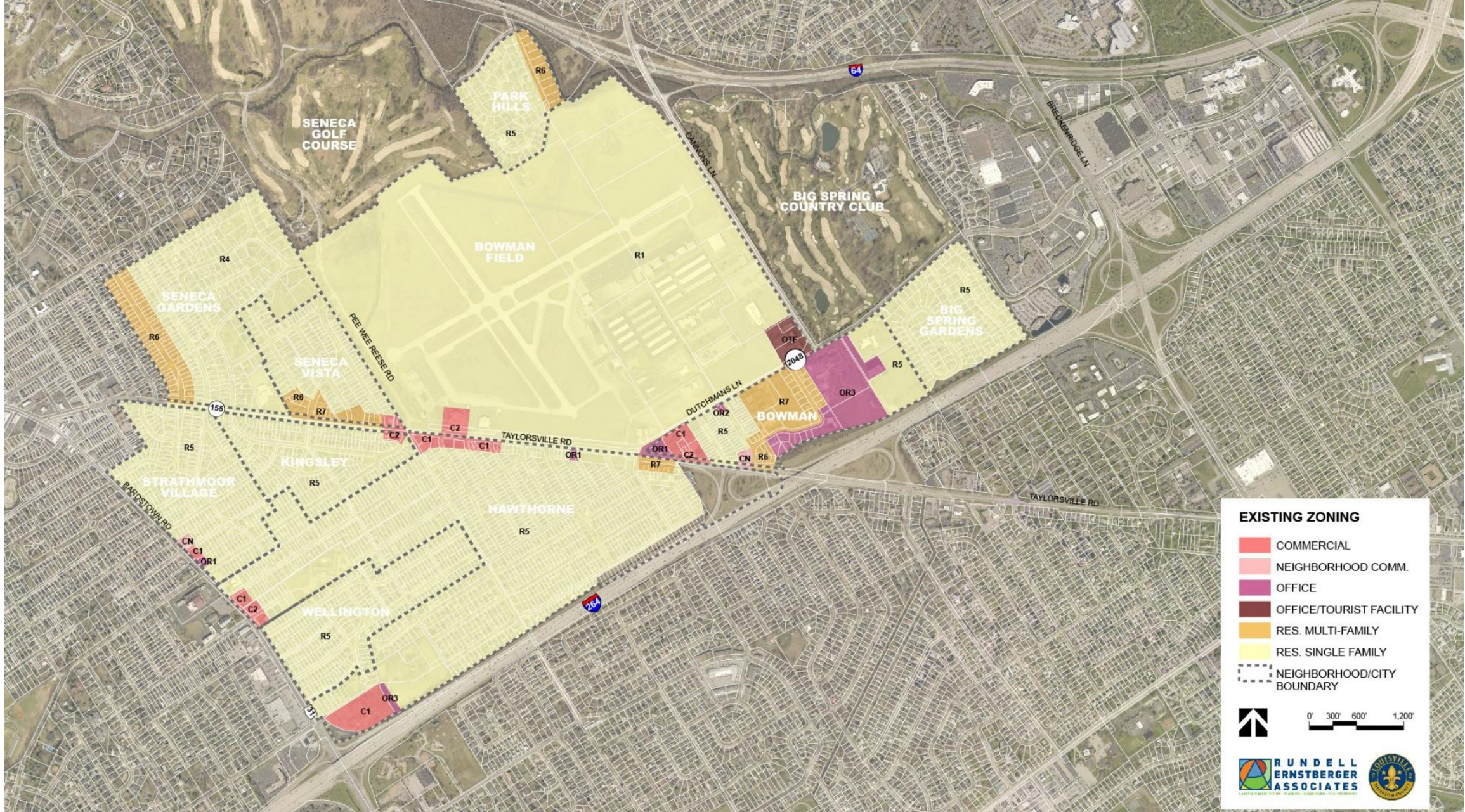
- Initiated by Councilman Brandon Coan (D-8)
- Managed by Louisville Metro Office of Advanced Planning & Sustainability
- Kicked off in January 2019
- Includes 5 neighborhoods and 4 home rule cities
  - Big Spring Gardens, Bowman, Hawthorne, Park Hills, Seneca Vista
  - Cities of Kingsley, Seneca Gardens, Strathmoor Village, Wellington
- Spans 3 Metro Council districts (8, 9, 26)
- 12 Advisory Group members
  - Residents from each home rule city, Hawthorne, Park Hills, and Seneca Vista
  - Representatives from LRAA, JCC
- Rundell Ernstberger Associates assisted with development of plan



## Background

### BOWMAN AREA NEIGHBORHOODS PLAN

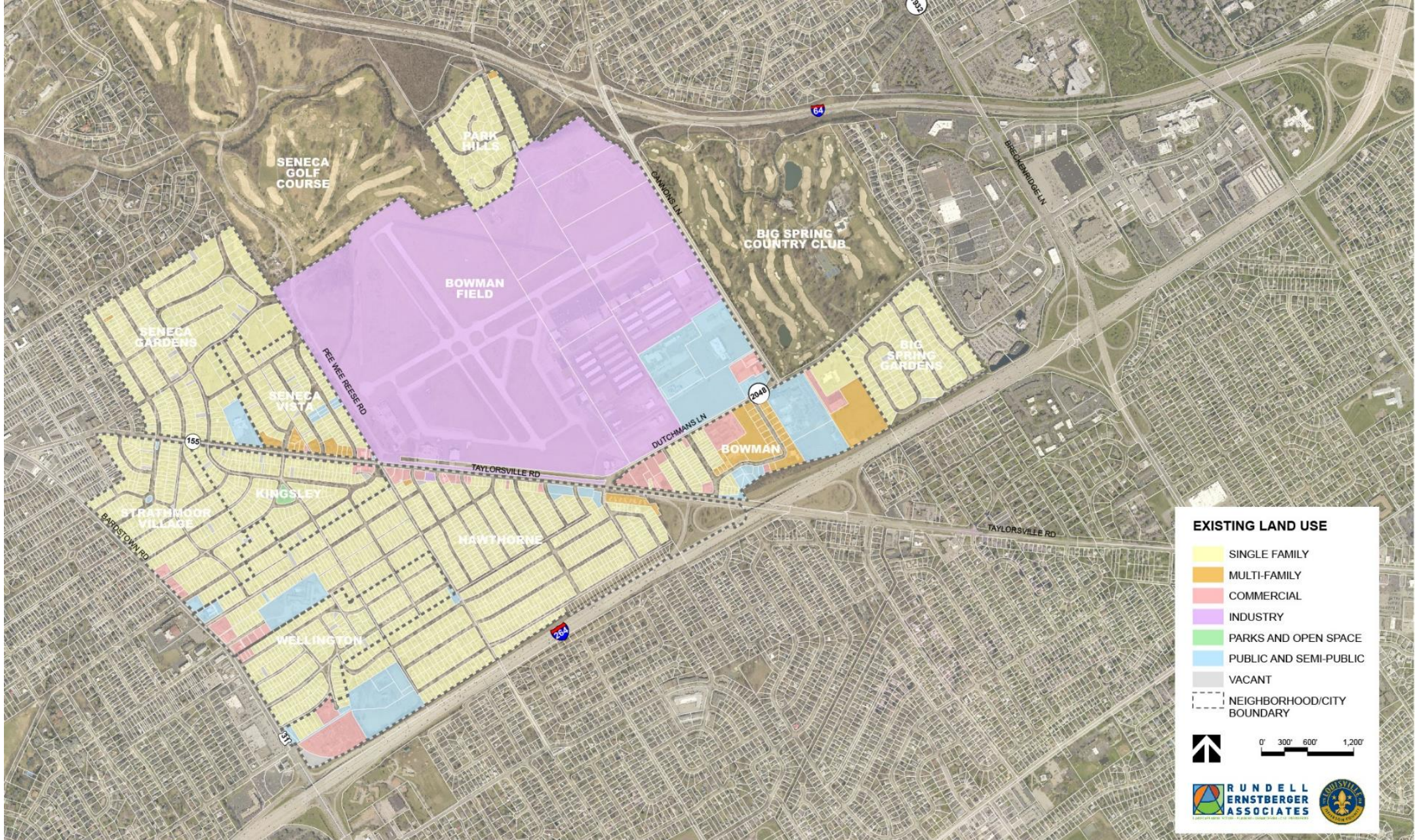




# Existing Zoning

## BOWMAN AREA NEIGHBORHOODS PLAN

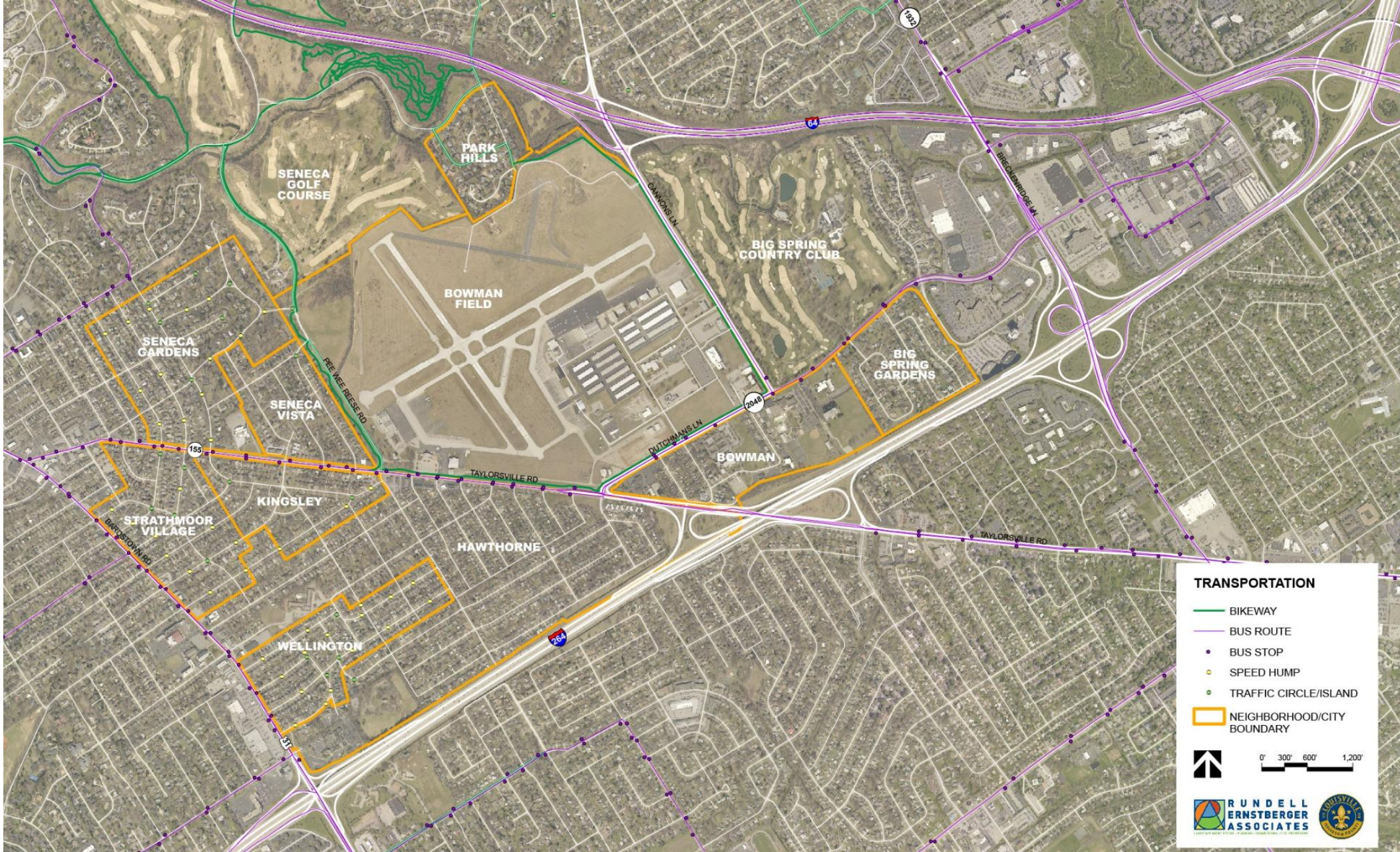




# Existing Land Use

## BOWMAN AREA NEIGHBORHOODS PLAN

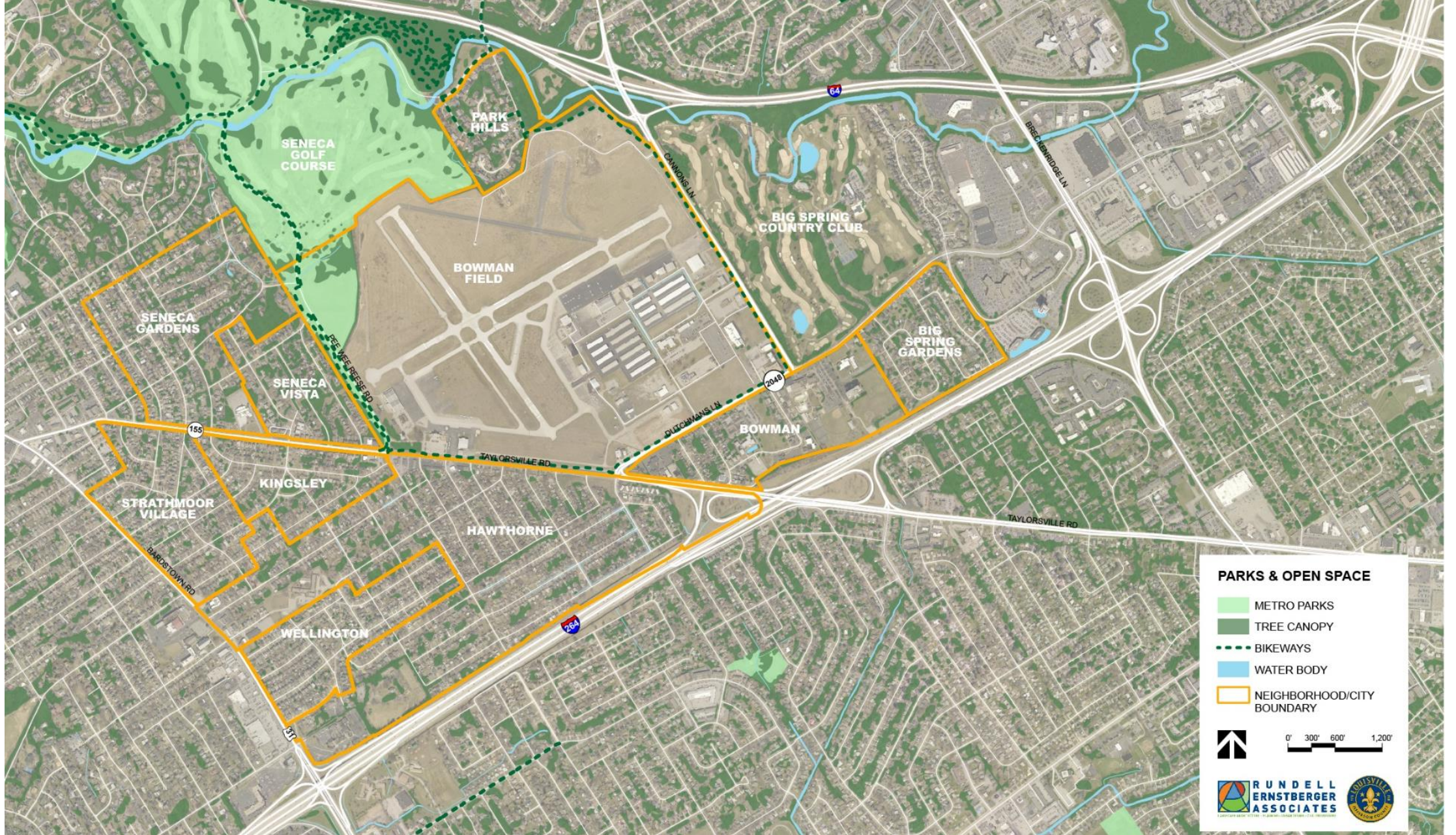




# Existing Transportation

## BOWMAN AREA NEIGHBORHOODS PLAN





# Existing Parks and Open Space

## BOWMAN AREA NEIGHBORHOODS PLAN



# COMMUNITY ENGAGEMENT

- 4 Advisory Group meetings
  - March, April, July, September 2019
- 10 focus group meetings
  - Hawthorne
  - Park Hills
  - Seneca Vista
  - City of Kingsley
  - City of Strathmoor Village
  - City of Wellington
  - Area businesses (Taylorsville Road, Dutchmans Lane/Cannons Lane)
  - LRAA
  - Government agencies
- 3-day community workshop – May 14-16, 2019
- Open house – August 24, 2019
- Project website updated throughout the planning process
- Engaged with over 120 people
- Media coverage in May and August 2019



*Public Input*

**BOWMAN AREA NEIGHBORHOODS PLAN**







## VISION STATEMENT:

*It is our vision for the future of the Bowman area to remain a vibrant collection of neighborhoods with a high quality of life. The desirable location is enhanced with even better pedestrian, bicycle, and vehicular connectivity, especially along and across Taylorsville Road. Historic Bowman Field remains an invaluable asset to the area, and open communication between the airport and surrounding neighborhoods is vital to ensure ongoing prosperity. The residential character of the area is preserved, with limited growth at appropriate locations. The Bowman area is green, with a robust tree canopy, and residents have safe and easy access to parks, open spaces, and other community assets.*

Vision

**BOWMAN AREA NEIGHBORHOODS PLAN**





## PLAN ELEMENTS

- Land Use & Community Form
- Mobility
- Quality of Life

### *Plan Recommendations*

#### **BOWMAN AREA NEIGHBORHOODS PLAN**



# LAND USE & COMMUNITY FORM

*Goal: Protect the established character and scale of the Bowman area neighborhoods and cities to ensure continued success of the area.*

**LU1:** Ensure any proposed development on the north side of Dutchmans Lane, between Gast Boulevard and Cannons Lane, meets neighborhood goals of building and site design.

**LU2:** Ensure continued residential use along Bardstown Road and Taylorsville Road, west of Pee Wee Reese Road.

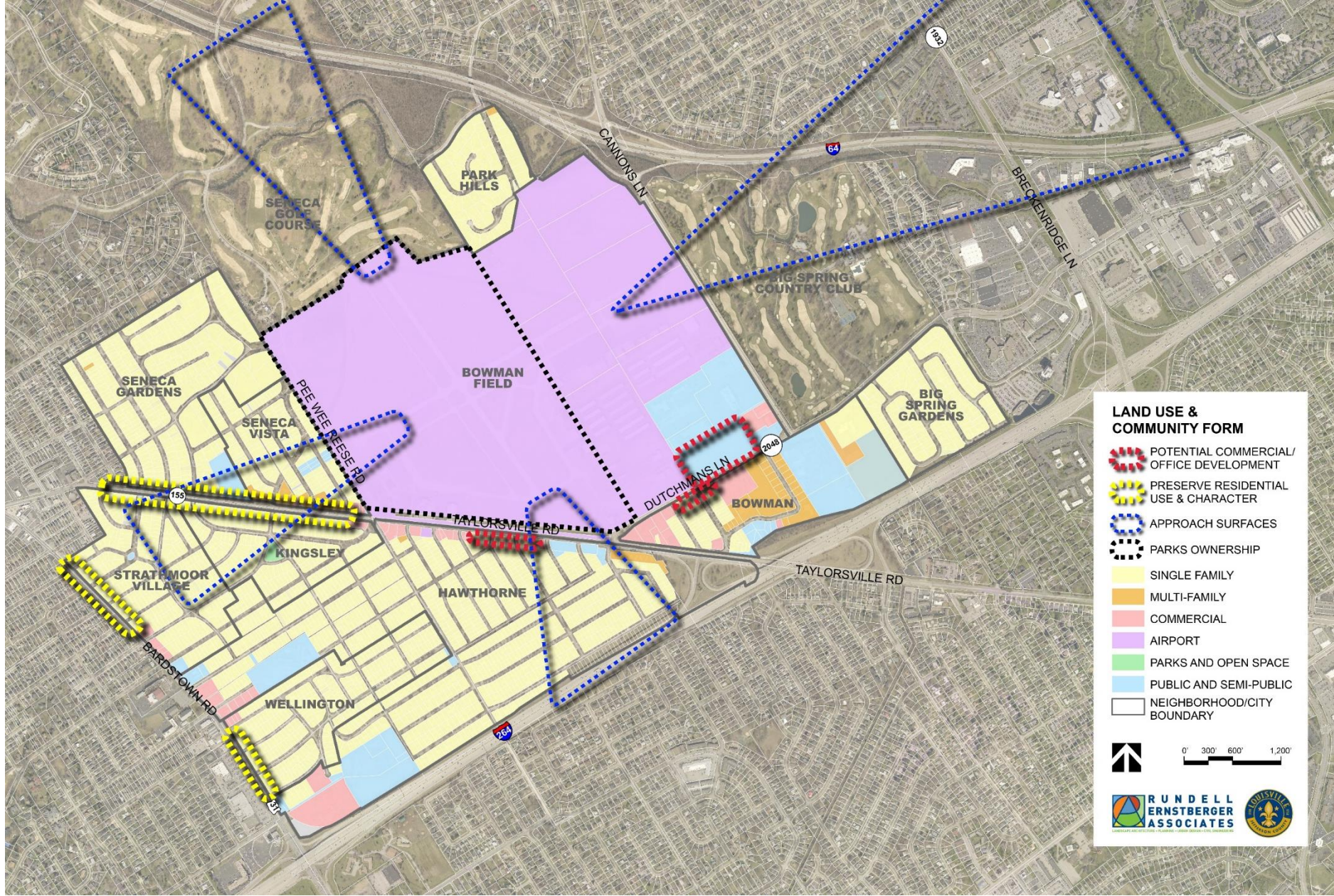
**LU3:** Support residential to commercial conversions on Taylorsville Road, between Dartmouth Avenue and Seneca Boulevard, and along Dutchmans Lane, between Bowman Avenue and the Seneca Place care center.



*Plan Recommendations*

**BOWMAN AREA NEIGHBORHOODS PLAN**





# Plan Recommendations

## BOWMAN AREA NEIGHBORHOODS PLAN



# MOBILITY

*Goal: Provide a safe and effective transportation system that accommodates all users and abilities, including pedestrians, cyclists, transit riders, and motorists, to connect neighborhoods, employment centers, and community destinations.*

**M1:** Improve pedestrian infrastructure and lighting at key intersections to ensure accessibility and safety.

**M3:** Fill gaps in the sidewalk network and construct new sidewalks along high-traffic roads that are lacking them.

**M6:** Coordinate with KYTC for improvements and renovations to Taylorsville Road and Dutchmans Lane with the goal of implementing Complete Streets.

**M7:** Explore opportunities for intersection modifications as roadways are renovated and maintained.



*Plan Recommendations*

**BOWMAN AREA NEIGHBORHOODS PLAN**





# Plan Recommendations

## BOWMAN AREA NEIGHBORHOODS PLAN



# QUALITY OF LIFE

*Goal: Promote programming of community-oriented events and activities to foster a safer, more vibrant, and engaged community.*

**QoL2:** Enhance existing open spaces with both active and passive amenities to promote healthy living and community gathering.

**QoL4:** Enhance communication between neighborhood groups and LRAA.

**QoL6:** Beautify key corridors using welcome and wayfinding signs, enhanced landscape treatments, public art, lighting, and street trees.



*Plan Recommendations*

**BOWMAN AREA NEIGHBORHOODS PLAN**





# Plan Recommendations

## BOWMAN AREA NEIGHBORHOODS PLAN





# PLANNING COMMITTEE

- Meeting on December 18, 2019
- Recommendations:
  - Engage with Hawthorne Elementary and Farmington
  - Add map of buildable vacant residential lots per Land Use & Community Form Recommendation #8



*Planning Committee*

**BOWMAN AREA NEIGHBORHOODS PLAN**





## STAFF FINDINGS

- Community Form Goals 1-4
- Mobility Goals 1-3
- Community Facilities Goals 1 & 2
- Economic Development Goal 1
- Livability Goals 1-3
- Housing Goal 2

*Staff Findings*

**BOWMAN AREA NEIGHBORHOODS PLAN**





# NOTIFICATION

## 19-AREAPLAN-0003

Date	Purpose of Notice	Recipients
January 15, 2020	Hearing before Planning Commission	Legal Advertisement in the Courier-Journal Advisory Group and applicable Council Members



*Notification*  
**BOWMAN AREA NEIGHBORHOODS PLAN**





## REQUIRED PLANNING COMMISSION ACTIONS

### 19-AREAPLAN-0003

1. Recommend to Metro Council approval/denial of the Bowman Area Neighborhoods Plan
2. Recommend to Metro Council approval/denial of Executive Summary as amendment to Plan 2040



*Required Actions*  
**BOWMAN AREA NEIGHBORHOODS PLAN**





*Thank You*

**BOWMAN AREA NEIGHBORHOODS PLAN**

