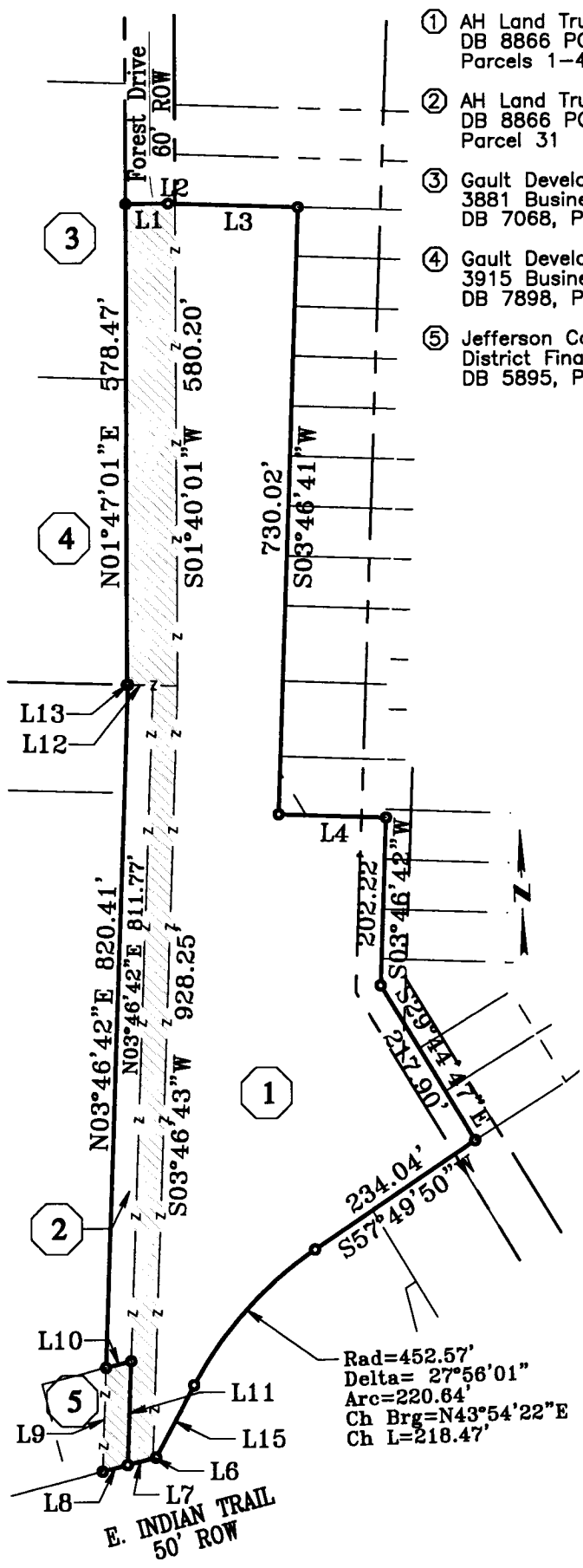
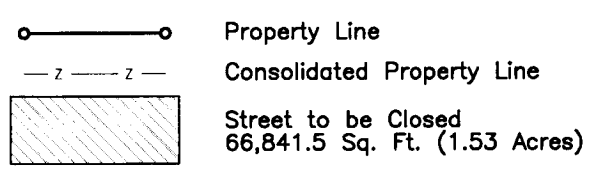


- ① AH Land Trust
DB 8866 PG 398
Parcels 1-4, 17-26
- ② AH Land Trust
DB 8866 PG 398
Parcel 31
- ③ Gault Development, INC.
3881 Business Park Dr.
DB 7068, Pg. 170
- ④ Gault Development, INC.
3915 Business Park Dr.
DB 7898, Pg.984
- ⑤ Jefferson County School
District Finance Corporation
DB 5895, Pg 525

LINE	BEARING	DISTANCE
L1	S88°35'45"E	51.38'
L2	N86°13'39"W	8.63'
L3	S86°13'39"E	148.66'
L4	S86°13'18"E	130.00'
L5	S29°56'43"W	98.74'
L6	S77°19'38"W	3.99'
L7	S77°19'38"W	31.28'
L8	S77°19'38"W	31.28'
L9	N03°46'42"E	125.12'
L10	N77°19'38"E	31.28'
L11	N03°46'42"E	125.12'
L12	N86°38'20"W	30.00'
L13	S86°38'20"E	1.20'



- 1 The purpose of this plat is to close a portion of right of way of Forest Drive 962 feet south of Poplar Level Road south to Indian Trail.
- 2 The subject property is being re-zoned from R4, R5, R7 & M2 to PRD, and is in the Neighborhood Form District.
- 3 Related Cases:
18ZONE1051



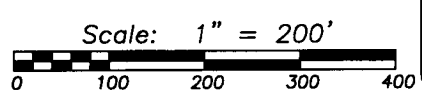
LAND SURVEYOR'S CERTIFICATE

I hereby certify that the survey for this plat was made under my supervision and that the angular and linear measurements shown thereon are correct to the best of my knowledge and belief. This survey and plat meets or exceeds the minimum standards of governing authorities.

STATE OF KENTUCKY
Charles Vinsand
 PLS 3279
 LICENSED PROFESSIONAL LAND SURVEYOR

CHARLES VINSAND P.L.S. #3279

Survey Prepared by:
Vinsand Engineering and Land Surveying, Inc.
 306 W Jefferson St.
 La Grange, KY 40031
 (502) 222-7487



STREET CLOSURE PLAT

PURPOSE: The purpose of this plat is to close a portion of right of way of Forest Drive 962 feet south of Poplar Level Road south to Indian Trail.

OWNER: AH Land Trust
 P.O. Box 512
 Louisville, Kentucky 40255

INST. NO D.B. 8866 PG. 398
TAX BLK & LOT: 624, 315
ZONING: R-7
FORM DIST.: Neighborhood
LOCATION: 4720 Forest Drive

DATE: 10/8/2018
SCALE: 1"=200'
ACCT: 2018-521

Forest Drive Closure Description

Commencing at a point in the south line of Poplar Level Road and being the northeast corner of Watterson Business Park, as conveyed to Gault Development Inc., recorded in Plat Book 41 Page 88, in the Office of the Clerk of Jefferson County, Kentucky; thence leaving south line of Poplar Level Road **South 88°35'45" East**, a distance of **51.38 feet**; thence **South 86°13'39" East**, a distance of **8.63 feet**; thence **South 01°40'01" West**, a distance of **580.20 feet**; thence **South 03°46'43" West**, a distance of **928.25 feet** to a point in the North right of way of Indian Trail; thence with said north line **South 77°19'38" West**, a distance of **62.56 feet** to a point, said point being the south east corner of Jefferson Count School District, as recorded in Deed Book 5895 Page 525, in the Office of the Clerk of Jefferson County, Kentucky; thence leaving the right of way of Indian Trail, **North 03°46'42" East**, a distance of **125.12 feet**; thence **North 77°19'38" East**, a distance of **31.28 feet**; thence **North 03°46'42" East**, a distance of **811.77 feet**; thence **North 86°38'20" West**, a distance of **30.00 feet**; thence **North 86°38'20" West**, a distance of **1.20 feet**; thence **North 01°47'01" East**, a distance of **578.47 feet** to the Point of Beginning. Containing 1.53 ACRES, more or less.

RECEIVED
MAY 08 2018
PLANNING &
DESIGN SERVICES

Date: 05/08/2018

1651 EET 7510.73

Forest Drive Closure Description

Commencing at a point in the south line of Poplar Level Road and being the northeast corner of Watterson Business Park, as conveyed to Gault Development Inc., recorded in Plat Book 41 Page 88, in the Office of the Clerk of Jefferson County, Kentucky; thence leaving south line of Poplar Level Road **South 88°35'45" East**, a distance of **51.38 feet**; thence **South 86°13'39" East**, a distance of **8.63 feet**; thence **South 01°40'01" West**, a distance of **580.20 feet**; thence **South 03°46'43" West**, a distance of **928.25 feet** to a point in the North right of way of Indian Trail; thence with said north line **South 77°19'38" West**, a distance of **62.56 feet** to a point, said point being the south east corner of Jefferson Count School District, as recorded in Deed Book 5895 Page 525, in the Office of the Clerk of Jefferson County, Kentucky; thence leaving the right of way of Indian Trail, **North 03°46'42" East**, a distance of **125.12 feet**; thence **North 77°19'38" East**, a distance of **31.28 feet**; thence **North 03°46'42" East**, a distance of **811.77 feet**; thence **North 86°38'20" West**, a distance of **30.00 feet**; thence **North 86°38'20" West**, a distance of **1.20 feet**; thence **North 01°47'01" East**, a distance of **578.47 feet** to the Point of Beginning. Containing 1.53 ACRES, more or less.

RECEIVED
OCT 08 2018
PLANNING &
DESIGN SERVICES

RECEIVED
OCT 08 2018
PLANNING &
DESIGN SERVICES

Date: 05/08/2018

1651215/1023

Forest Drive Closure Description

Commencing at a point in the south line of Poplar Level Road and being the northeast corner of Watterson Business Park, as conveyed to Gault Development Inc., recorded in Plat Book 41 Page 88, in the Office of the Clerk of Jefferson County, Kentucky; thence leaving south line of Poplar Level Road **South 88°35'45" East**, a distance of **51.38 feet**; thence **South 86°13'39" East**, a distance of **8.63 feet**; thence **South 01°40'01" West**, a distance of **580.20 feet**; thence **South 03°46'43" West**, a distance of **928.25 feet** to a point in the North right of way of Indian Trail; thence with said north line **South 77°19'38" West**, a distance of **62.56 feet** to a point, said point being the south east corner of Jefferson Count School District, as recorded in Deed Book 5895 Page 525, in the Office of the Clerk of Jefferson County, Kentucky; thence leaving the right of way of Indian Trail, **North 03°46'42" East**, a distance of **125.12 feet**; thence **North 77°19'38" East**, a distance of **31.28 feet**; thence **North 03°46'42" East**, a distance of **811.77 feet**; thence **North 86°38'20" West**, a distance of **30.00 feet**; thence **North 86°38'20" West**, a distance of **1.20 feet**; thence **North 01°47'01" East**, a distance of **578.47 feet** to the Point of Beginning. Containing 1.53 ACRES, more or less.

RECEIVED
OCT 05 2018
PLANNING &
DESIGN SERVICES

Date: 05/08/2018

05/08/2018

Forest Drive Closure Description

Commencing at a point in the south line of Poplar Level Road and being the northeast corner of Watterson Business Park, as conveyed to Gault Development Inc., recorded in Plat Book 41 Page 88, in the Office of the Clerk of Jefferson County, Kentucky; thence leaving south line of Poplar Level Road **South 88°35'45" East**, a distance of **51.38 feet**; thence **South 86°13'39" East**, a distance of **8.63 feet**; thence **South 01°40'01" West**, a distance of **580.20 feet**; thence **South 03°46'43" West**, a distance of **928.25 feet** to a point in the North right of way of Indian Trail; thence with said north line **South 77°19'38" West**, a distance of **62.56 feet** to a point, said point being the south east corner of Jefferson Count School District, as recorded in Deed Book 5895 Page 525, in the Office of the Clerk of Jefferson County, Kentucky; thence leaving the right of way of Indian Trail, **North 03°46'42" East**, a distance of **125.12 feet**; thence **North 77°19'38" East**, a distance of **31.28 feet**; thence **North 03°46'42" East**, a distance of **811.77 feet**; thence **North 86°38'20" West**, a distance of **30.00 feet**; thence **North 86°38'20" West**, a distance of **1.20 feet**; thence **North 01°47'01" East**, a distance of **578.47 feet** to the Point of Beginning. Containing 1.53 ACRES, more or less.

RECEIVED
OCT 08 2018
PLANNING &
DESIGN SERVICES

Date: 05/08/2018

JB STEETS