

**Written Description
for
Change in Zoning
6511 Preston Highway
Case: 14zone1021**

Beginning at a point in the northerly right-of-way of Fern Valley Road, thence with said right-of-way S 66°53'19" W 50.00 feet to a point; thence leaving said right-of-way N 22°55'41" W 77.61 feet to a point; thence N 67°04'19" E 15.00 feet to a point; thence N 22°55'41" W 50.00 feet to a point; thence S 67°04'19" W 153.00 feet to a point; thence N 22°55'41" W 20.00 feet to a point; thence S 67°04'19" W 43.90 feet to a point; thence N 21°47'25" W 130.02 feet to a point; thence N 67°04'16" E 229.32 feet to a point; thence S 22°55'41" E 277.45 feet to the Point of Beginning and containing 0.9 acres more or less and being the same property deeded to Frist National Bank of Louisville by Deed Book 4499, Page 268 of record in the Jefferson County Clerk's Office, Louisville, Kentucky.

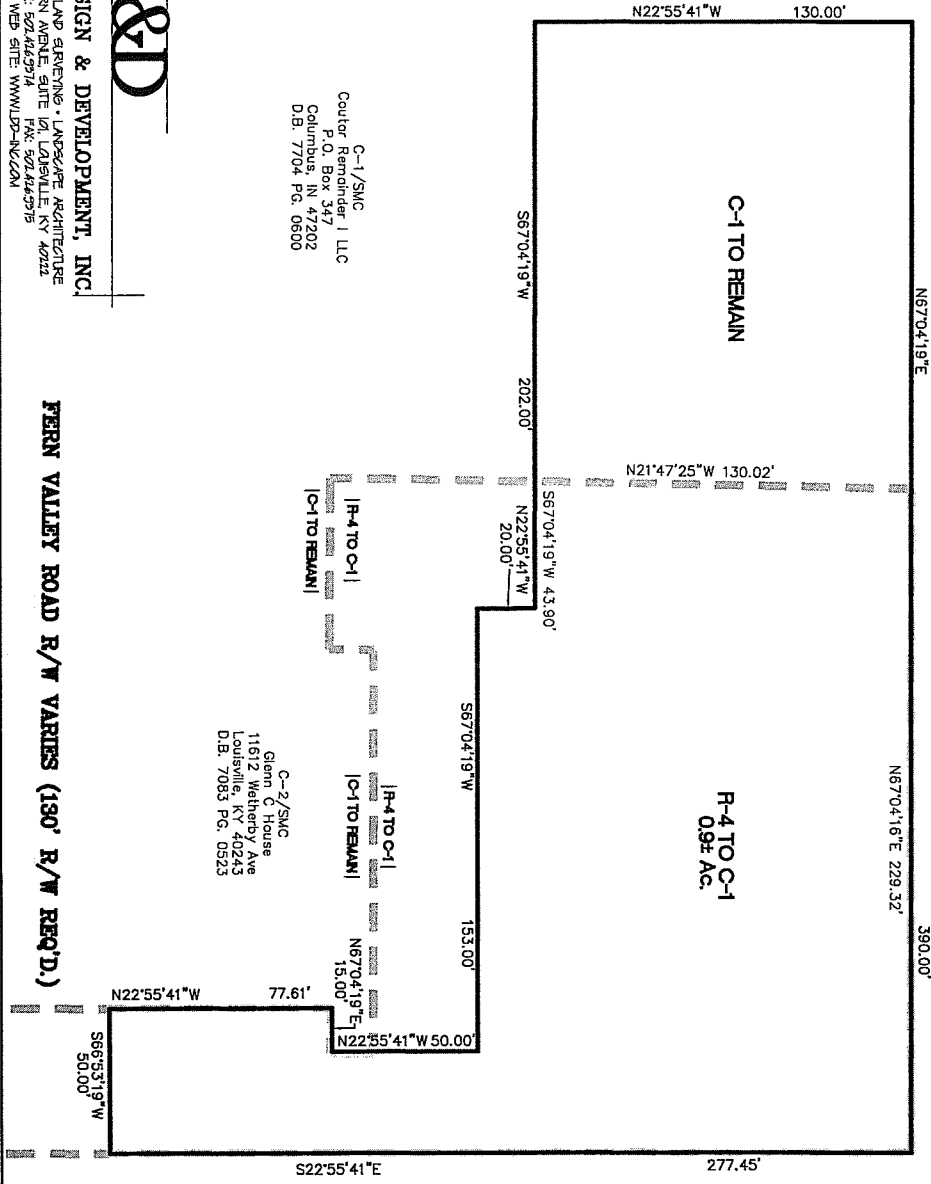
RECEIVED

JUL 14 2014
PLANNING &
DESIGN SERVICES

14zone1021



PRESTON HIGHWAY R/W VARIES (130' R/W REQ'D.)



C-2/S/MC
 Blue Ledge LLC
 6507 Preston Hwy
 Louisville, KY 40219
 D.B. 9067 PG. 0343

C-1/S/MC
 Coulter Remainder I LLC
 P.O. Box 347
 Columbus, IN 47202
 D.B. 7704 PG. 0600

C-2/S/MC
 Glenn C House
 11612 Wetherby Ave
 Louisville, KY 40243
 D.B. 7083 PG. 0523

C-2/S/MC
 Independent Pilots
 Association
 3607 Fern Valley Rd
 Louisville, KY 40219
 D.B. 9240 PG. 0017

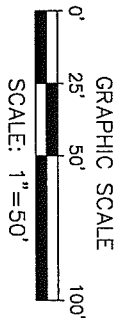
C-2/S/MC
 ASSP LLC
 7393 Pete Anders Rd
 Floyd Knobs, IN 47119
 D.B. 9010 PG. 0082



LAND DESIGN & DEVELOPMENT, INC.
 ENGINEERING • LAND SURVEYING • LANDSCAPE ARCHITECTURE
 505 WARDEN AVENUE, SUITE 101, LOUISVILLE, KY 40222
 PHONE: 502.425.9714 FAX: 502.425.9715
 WEB SITE: WWW.LDDP-INC.COM

FERN VALLEY ROAD R/W VARIES (130' R/W REQ'D.)

RECEIVED
 JUL 14 2014
 PLANNING &
 DESIGN SERVICES



**ZONING CHANGE
 EXHIBIT PLAT**

Property of:
 PNC BANK NATIONAL ASSOCIATION
 c/o PNC REALTY SERVICES
 620 LIBERTY AVENUE 19TH FLOOR
 PITTSBURGH, PA 15222
 DEED BOOK 4398, PAGE 274
 Property Address: 6511 PRESTON HWY

1470 NE1021